

# NOW

IS POSSIBLE

Postgraduate and Professional Prospectus 2019

1-29

THE POSTGRAD  
EXPERIENCE

30-69

BROWSE  
OUR COURSES

70-76

THE USEFUL  
STUFF



We have been awarded a Gold rating in the 2018 Teaching Excellence Framework (TEF), the Government's higher education ranking system. This means we are among a select number of UK institutions that deliver the highest quality of teaching, learning and graduation outcomes for our students. We're investing in supporting you to succeed.





“

I really enjoyed the atmosphere at UWE Bristol. The academic staff were understanding and supportive. Without UWE Bristol and the work based degree it offered I wouldn't be where I am now. I believe that where there is a will, there is a way.

Dofo Jama, PGCE Primary

# WHY POSTGRAD?

If you're considering the right time to start further study, **the answer's now.**

In today's fast-paced, on-demand economy, moments need to be seized and opportunities grasped. We know there's a lot to think about – cost, career, family, you – but if there's ever been the right time to do it, it's here and now.

Whether you're looking to boost your prospects in your current career, change direction to follow your dream, or make sure you stand out from the crowd in a competitive jobs market, our inspiring courses, strong industry links, excellent research and range of study options will help you get there... Don't let 'What if?' become 'If only'.

**What are you waiting for?**

# NOW'S THE TIME

**Now.** It's a short word, but one with immense potential. The potential to help you thrive in today's ultra-competitive jobs market. To raise yourself far above the competition. To change to the career you really want. To push yourself even further forward.

Whatever you want to achieve from postgraduate study, this is the perfect time to grasp it with both hands.

As well as helping you explore new ideas and develop rewarding professional networks, we're passionate about providing all the practical, personal and academic support you could need. And we always keep an eye focused on the bigger picture. That's why our strong track record for employability speaks for itself.

So, whether you're looking to broaden your career options, boost your earning power, or strengthen your knowledge and experience, **now's the time.**

## 98%

of our postgraduate students were in professional work and/or further study six months after graduating.

Destination of Leavers  
from Higher Education Survey 2018





Tawny



Takeaways

Bristol

Bristol Model  
Bristol Model  
Bristol Model



Visualising data  
and creating  
interactions

# MADE

Debra was in her 50's when she decided to follow her dream of supporting families in a health care role.

"I didn't go to university until my son was 18. Having worked as an administrator for 18 years, and also as a counsellor, I felt a strong desire to do something for myself, to get a degree and become professionally qualified.

I applied to work with a health visitor provider in Bath and they arranged for me to train at UWE Bristol. The course was great. You get a lot of hands-on experience, and it was a true reflection of what would be expected in the workplace.

After I qualified, I started working full time as a health visitor, and it's without a doubt the best job I've ever had, working with 0-5 year olds and their parents, and supporting their health and wellbeing.

Since completing this qualification, I've been able to progress in my career much faster than I would have otherwise. Within just a few years, I've carved out my niche, found a job I love, and increased my earning potential."

## the move to a better future





“

I had a very positive experience at UWE Bristol. I was able to schedule my studies to fit around my work and family life. The support from staff was first class and is why I would recommend this course.

Robert Stewart, LLM Advanced Legal Practice

# OPTIONS

## LOTS OF THEM

**A wide range of ways to study – tick.  
Access to loans and finance options that  
help make further study more affordable – tick.  
At UWE Bristol, we've got things covered so that  
you can feel confident taking that next step.**

Life can get pretty busy at times. That's why we offer a variety of study options, which vary depending on your chosen course. Whether it's full-time or part-time, there's something to suit everyone.

Some of our courses build directly on previous qualifications, while others are open to graduates of any discipline, or with relevant work experience.

Whichever applies to you, choosing postgraduate study means you're choosing to invest in yourself.

But if you're worried about the cost implications, it's good to know that there are multiple funding support options available. These include the Government's postgraduate loan scheme, our UWE Bristol Alumni Scholarships for former students, the Vice-Chancellor's 2020 Scholarship for current undergraduate students, and more.

## More

[uwe.ac.uk/pgfunding](https://uwe.ac.uk/pgfunding)  
[uwe.ac.uk/studyoptions](https://uwe.ac.uk/studyoptions)

# Bristol Distinguished Address Series

These free public lectures are designed to get you closer to business leaders and the challenges and decisions they make – day in, day out. Previous speakers include: Dame Helen Ghosh – Director General of the National Trust, Baroness Shriti Vadera – Chair of Santander UK and Simon Fox – Chief Executive, Trinity Mirror.

Find out more  
[uwe.ac.uk/bdas](http://uwe.ac.uk/bdas)

# More

[uwe.ac.uk/careerssupport](http://uwe.ac.uk/careerssupport)





# RIGHT HELP RIGHT TIME

**When it comes to getting the most out of your postgraduate experience, the right help can make all the difference. So as well as pushing you hard to achieve, we're here to support you every step of the way.**

From the moment you join us, you'll get all the practical and academic support you need to thrive. This means an inspiring working environment and accessible tutors. And, as well as sharing a passion for excellent teaching, all of our staff are committed to giving you the best possible support too.

You'll have access to a wide range of extra-curricular opportunities, giving you the chance to develop yourself in line with your future ambitions. Through visiting lecturers, networking events and volunteering you'll be able to broaden your experience and widen your professional circle.

And because we know your studies are all about achieving your career goals when you finish, our award-winning careers service is here to help guide and shape your next steps.

# APPLIED

Neha was inspired to help people with Parkinson's after witnessing her late grandad struggle with the disease. Her 'smart walking stick' detects when a user's limbs have frozen and they cannot continue walking and has attracted the attention of the NHS and Parkinson's UK charity.

"People with Parkinson's get jammed in one place and can't step forward. The beat inside the handle helps create a rhythm to get them started again."

Founding start-up company 'Walk to beat' to develop and manufacture her product, Neha knew that she had more to learn about business and returned to UWE Bristol to study MSc Marketing.

Running a business alongside studying for a master's gave me the perfect platform to apply my learning. I was able to use the experience and support of the teaching staff to develop my business plan, build my network and apply it to my start-up company."

## my learning



# YOUR SUPPORT NETWORK

**You'll find you are part of something special at UWE Bristol. From our experienced staff to your community of fellow students, everyone and everything is set up to help you feel supported and inspired.**

As well as the wide range of academic help available, we're also here for more personal support, should you ever need it.

The Students' Union not only offers you an opportunity to meet people, but is also on hand to offer support and guidance. Whether it's finding a part-time job, getting advice from their free and confidential Student Advice Centre or being part of a wide range of sports clubs, societies and networks, it's a great way to enhance your student experience.

Our Centre for Sport offers discounted student membership giving you access to our wide range of facilities including a multi-fitness suite, exercise class programme, climbing wall and physiotherapy suite.

If you're looking for high-quality childcare, support from Disability Services or dedicated areas to practise faith and spirituality, you'll find you're well catered for too. And if you ever need to talk, we offer wellbeing support, telephone counselling and a range of self-help resources. Whatever's on your mind, you only have to ask.

“

**Starting a new subject from scratch was daunting, but the teaching and support I received at UWE Bristol made the transition a smooth and enjoyable one.**

**Briony,**  
MSc Events Management

## More

[uwe.ac.uk/pgsupport](http://uwe.ac.uk/pgsupport)





## Routes into a profession

Looking to open up your career options and stand out from the crowd? Many of our courses are designed to fast-track you into all sorts of different professions, regardless of the subject of your first degree. Find out more [uwe.ac.uk/routes](https://uwe.ac.uk/routes)

# MORE QUALIFIED, MORE EMPLOYABLE

**We've made sure our courses are created with the jobs market in mind, with many gaining professional accreditation. It means you'll leave us more attractive to companies in your chosen industry and ready to hit the ground running.**

We know the bottom line: to achieve your ambitions, you need to develop the skills and knowledge employers are really looking for. That's why many of our courses have been developed in close partnership with industry. And they are taught by staff, many of whom are leaders in their field, contributing to research and helping industry and governments make positive changes.

In fact, we work with over 1,000 national and international employers and professional bodies to make sure we're continually meeting the needs of industry.

As well as helping you get hands on with real briefs and real projects, you'll also have access to a wide range of opportunities, like placements, networking, visiting lecturers and volunteering.

They're all invaluable ways to make sure you finish your course with the perfect balance of knowledge and real-world experience.

## More

[uwe.ac.uk/workingwithemployers](http://uwe.ac.uk/workingwithemployers)

# STARTED

As a mum of two in her thirties, Debbie decided to completely change direction and retrained to teach children with special needs.

“I decided to take the plunge and retrain for my dream role of teaching children with special needs in primary schools. I did a master’s in Special Education Needs near where I live in Wales, and then applied for the PGCE teacher training course at UWE Bristol.

Changing careers was a massive decision. I studied full-time which was a big commitment with a family to think about too. But I was very determined and it was great to use my brain again. And my tutors were always there to listen, chivvy me along and offer extra support when needed. I loved every minute of the PGCE, and I’m doing a job I love now.”

a fulfilling  
new career



# BRISTOL

## THE PLACE TO BE

**It's not just what you know, but also who you know and where you learn. With our close connections to industry and a prime position in the heart of Bristol, you can tick all three off the list.**

When it comes to progressive thinking, dynamic activity and world-leading industry, Bristol is internationally regarded. The city attracts big multinational names like Rolls-Royce, Airbus and Aardman. Names you want to work with and for. But it's also the variety and scale of business endeavour that's so inspiring. From the creative industries to engineering, high-tech to healthcare, and established national corporations to growing start-ups, it's a hotbed of opportunity.

Our enviable position at the heart of this dynamic environment has helped us forge strong connections and industry networks with a wide range of leading employers. Which, in turn, means you'll have incredible opportunities to build a valuable network of contacts and develop real insight into your chosen subject area.

The end result is you're equipped with excellent connections, skills, knowledge and experience. Everything you need to take your career to the next level.

## More

[uwe.ac.uk/bristol](http://uwe.ac.uk/bristol)

# NETWORK



**The support is hugely impressive and the links with industry are fantastic. There are often careers events taking place for students to attend.**

Christopher Flanagan, Legal Practice Certificate  
LLM International Banking and Finance Law

# ACCELERATED

After finishing his first degree, Tom did a master's and it spring-boarded him into setting up his own successful business in renewable energy recruitment.

"My interest in renewable energy was sparked during my degree in real estate valuation and management and the master's gave me the chance to delve deeper. I got to work with lecturers, who are experts in this field, at a global level. They were all really passionate about the subject and very supportive.

I went on a five-month factory placement as an environmental consultant with the Mars Group. It was an amazing opportunity to put what I'd learnt into practice.

After graduating, I joined an international recruitment company setting up their renewable energy division, and soon after I set up my own recruitment business with a friend. We're now a year in and business is going strong.

It's great working for myself in an industry I love and travelling all over the world. It's not a bad position to be in at 25."

## to success





# FIRST-CLASS FACILITIES

**With our excellent learning facilities and rapidly developing campuses, everything you need is close to hand. In fact, UWE Bristol offers the perfect environment for you to succeed.**

We believe in continued investment to enhance your student experience. And because we're always looking to the future, many of our practice-oriented spaces offer just what you need to succeed.

From nursing simulation suites to multi-media broadcast studios and a financial trading room, these spaces are what you need to apply and develop your knowledge. And then there's our virtual learning tools, extensive library service and robotic labs...in short, everything's here.

Located in and around Bristol, each of our campuses offer their own unique blend of vibrant community and inspiring locations too.

## INVESTING IN YOUR SUCCESS

We're investing £300 million into our accommodation, equipment and technology. This shows you where our priorities lie. With you.

## More

[uwe.ac.uk/ourfacilities](http://uwe.ac.uk/ourfacilities)



## Frenchay Campus

Our main campus, and just four miles outside the city centre. It's home to our £55 million, world-class Bristol Business School, and the new £16.5 million West of England University Enterprise Zone (UEZ), which is one of only four in the country. As part of the UEZ, FutureSpace is a dynamic new workspace for innovative start-ups and SMEs, specialising in science and high-tech areas.

## Glenside Campus

Located in the Fishponds area of the city. It's home to most of our allied health, nursing and midwifery students.



## City Campus

Home to UWE Bristol's creative and cultural industry courses. Spanning the city, it incorporates Bower Ashton and Spike Island, as well as studio spaces above Arncliffe gallery and Watershed.

# Research studies

We have a growing range of research courses at postgraduate level, such as our Master's in Research courses. And if you're inspired to continue, the UWE Bristol Graduate School provides an exciting and vibrant environment for doctoral study.



# RESEARCH THAT GIVES YOU THE EDGE

**Our research has real impact on society and we are often able to integrate it with our learning and teaching. This means you benefit from a richer, fuller, more relevant learning experience which, in turn, increases your employability.**

Research is how we drive things forward, make the latest breakthroughs and discover the next big thing. It's brought to life by our expert staff, many of whom are leaders in their field, contributing to new research and helping industry and governments to make positive changes.

Like when our research into overcoming negative body image was used to inform policy recommendations in a UK All-Party Parliamentary Group report, not to mention inspiring Dove's worldwide social mission agenda.

Or when Pee Power® was used to turn urine into electricity at Glastonbury Festival, charging phones just a few hundred metres from the Pyramid stage.

Whether you're absorbing it in the classroom, or getting directly involved in live projects, our research is a powerful way to bring the most up-to-date thinking into your learning.

## Improving body confidence

Our research partnership with Dove's Self-Esteem Project has helped deliver body confidence education to 29 million young people in 140 countries.

## More

[uwe.ac.uk/research](http://uwe.ac.uk/research)

# EVERYTHING YOU NEED TO SUCCEED

Everyone and everything here shares  
a single purpose: to help you turn,  
'I want to be...' into 'Now I am...'

Passionate people and award-winning buildings.  
A home in one of the UK's most economically  
and culturally important cities. Close links with  
over 1,000 national and international employers  
and professional bodies. Practice-oriented spaces  
and continuous investment in the latest equipment  
and modern technology.

**Now. It's never been more possible.**



“

I've gone from not knowing what I wanted to do for a job to having a clear career path to follow. I'm now well on my way to becoming a qualified solicitor.

Kelly, Graduate Diploma in Law



# BROWSE OUR COURSES

Accounting, Economics and Finance	32
Allied Health Professions	34
Architecture	36
Art and Design	38
Arts and Culture	40
Built Environment	42
Business and Management	44
Computing	46
Creative Technologies	48
Education and Childhood	50
Engineering	52
Filmmaking, Animation and Photography	54
Geography, Planning and Environmental Management	56
Journalism, Media and Public Relations	58
Law	60
Nursing and Midwifery	62
Science	64
Social Sciences	66
Social Work	68

# ACCOUNTING, ECONOMICS AND FINANCE

Informed by industry to keep pace with a fast-changing world, our courses will provide you with the expert knowledge and exposure to new ideas you'll need to achieve your career goals.



Find out more by visiting:  
[uwe.ac.uk/subjects/accounting](https://uwe.ac.uk/subjects/accounting)

## Solve future business challenges

You'll receive excellent teaching with a personal approach. Many of our staff are, or have been, working within the industry, or are active researchers publishing in leading journals.

Be inspired by business leaders at one of our networking events. Our distinguished address series of lectures has featured Baroness Shriti Vadera, Chair of Santander UK and Sacha Romanovitch, CEO of Grant Thornton.

Our purpose-built £55 million Business School gives you access to Harvard lecture theatres, technology-enhanced teaching areas, and social learning spaces ideal for group work and collaboration. You can access the latest company data and analytics in our Bloomberg financial trading room. It's the very same system used by investment banks, giving you a commanding view of global markets and outstanding opportunities to enhance your analytical skills in accounting, economics and finance.

As well as the knowledge and expertise you'll need to achieve your goals, you'll refine the professional skills that are crucial in today's jobs market. You'll have the opportunity to gain consultancy experience through our Business Advice Clinic, offering pro-bono guidance to small local businesses alongside our partners Grant Thornton and Albert Goodman. Communication, networking and presenting, strategic thinking and creative problem solving are just some of the essential skills that make our postgraduates stand out from the rest.

“

**I love the Bloomberg trading room for financial and economic analyses as well as stock trading, it's really hands-on. The learning facilities are extremely modern – technology at its best. I'll leave equipped to deal with real-world challenges.**

**Bobby**  
MSc Finance

Course code	Course	Delivery	Campus	Start month	Accreditation*
N34012	MSc Accounting and Finance	FT	Frenchay	September	ACCA, CIMA
N34A12	MSc Accounting and Finance (Fast Track)	DL		September	
N39012	MSc Finance	FT	Frenchay	September	
L1501	MSc Global Political Economy	FT, PT	Frenchay	September	

### Key:

FT Full-time

PT Part-time

DL Distance learning

\* For full accreditation names please see page 76.

For full information on entry requirements, including required subjects, grades and alternative qualifications please visit our website.

# ALLIED HEALTH PROFESSIONS



Like yours, our focus is on supporting lives and improving outcomes for patients, service users and carers in the community, primary or secondary care settings. We understand the rapidly evolving nature of the health and social care environment and offer a wide range of courses designed to both challenge and support you throughout your career.

Find out more by visiting:  
[uwe.ac.uk/subjects/health](https://uwe.ac.uk/subjects/health)

## Be part of a community that changes lives

Our many accredited courses are designed to help you achieve your goals; whether it's improving patient care or boosting your own career prospects. The work, consultancy and research experience of our staff ensures that your learning is backed up with relevant knowledge of the current issues. Courses are practical, so when you're not learning on campus you'll be doing work based training in your role or on placement.

Our modern facilities enable you to hone and define your skills in environments that mimic real clinical and community settings. Whether it's undertaking research into human performance in our dedicated Human Analysis Laboratory, or delivering radiotherapy to virtual patients, you can confidently take your new knowledge into the workplace. We also have an acclaimed health and social care library and extensive e-resources to support your development.

## Professional development

Keeping your skills and experience up to date will be crucial in helping to keep your career plans on track. Many of our courses offer recognised Continuing Professional Development (CPD) opportunities, enabling you to learn about the latest ideas, practices and developments in your profession. CPD can be achieved through short and professional courses, workshops, modules and undergraduate and postgraduate degree modules.



Course code	Course	Delivery	Campus	Start month	Accreditation*
B80042	MSc Medical Ultrasound‡	PT	Glenside	January	CASE
B80A42	MSc Nuclear Medicine	DL	Glenside	September	SCoR
B9611	MSc Physician Associate Studies‡	FT	Glenside	September	
B82A1	MSc Radiotherapy and Oncology‡	FT	Glenside	January	HCPC
B99P1	MSc Rehabilitation	PT, DL	Glenside	September	

### Key:

FT Full-time

PT Part-time

DL Distance learning

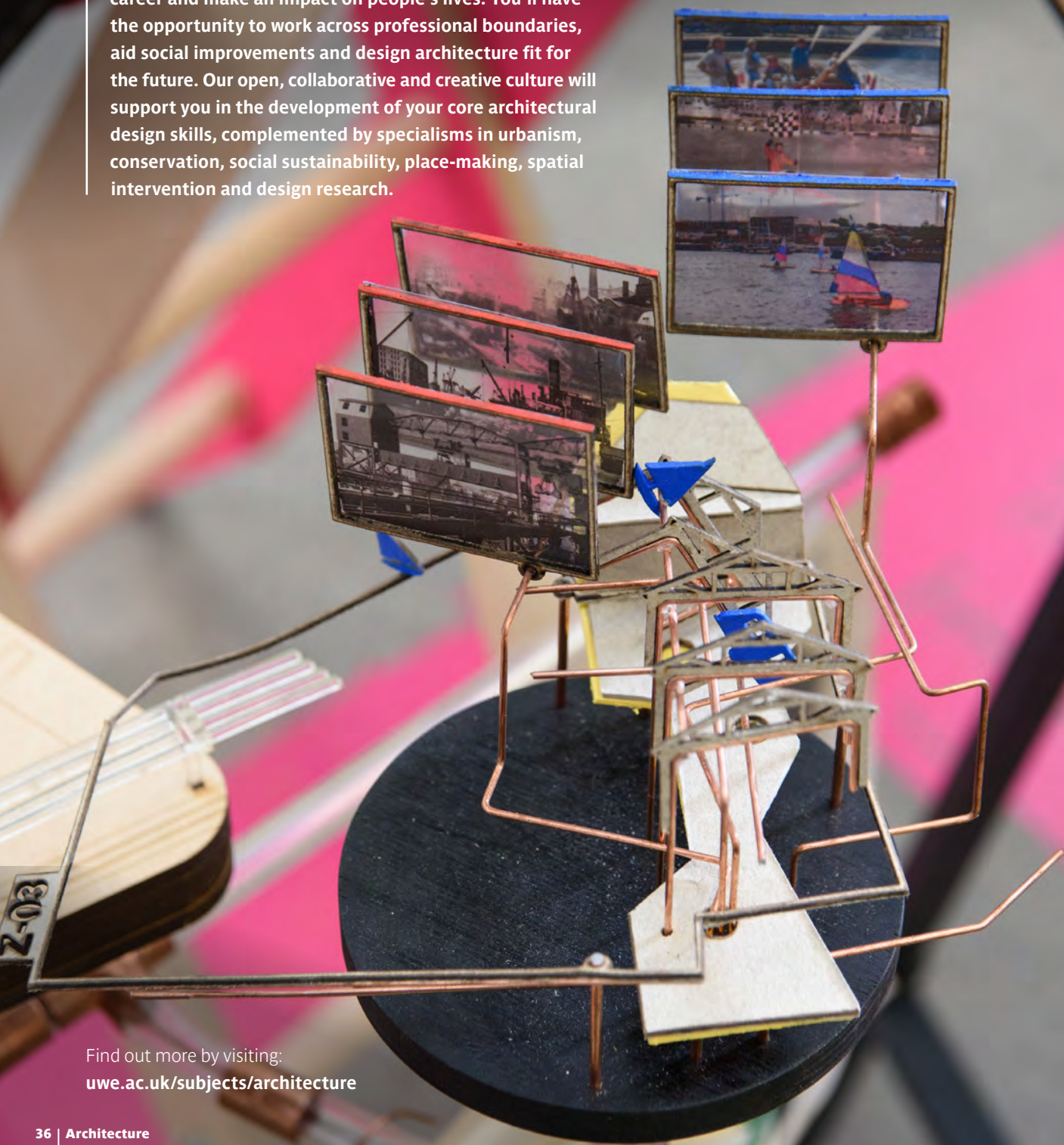
\* For full accreditation names please see page 76.

‡ Applicant will be required to attend an interview.

For full information on entry requirements, including required subjects, grades and alternative qualifications please visit our website.

# ARCHITECTURE

Develop your knowledge, refine your skills, advance your career and make an impact on people's lives. You'll have the opportunity to work across professional boundaries, aid social improvements and design architecture fit for the future. Our open, collaborative and creative culture will support you in the development of your core architectural design skills, complemented by specialisms in urbanism, conservation, social sustainability, place-making, spatial intervention and design research.



Find out more by visiting:  
[uwe.ac.uk/subjects/architecture](http://uwe.ac.uk/subjects/architecture)

## Develop your expertise and inspire futures

Long-standing links with leading employers such as Foster and Partners, Allford Hall Monaghan Morris Architects, AHR Architects and Austin-Smith:Lord ensure courses meet the needs of employers and equip you with the skills valued in industry. Qualifications are accredited by professional bodies; The Royal Institute of British Architects (RIBA) and Architects Registration Board (ARB).

Our flagship building has won a prestigious award for sustainability from RIBA, and ticks all the boxes for design, functionality and sustainability. You can access industry-leading work-spaces, including integrated studios for computer-aided design (CAD), model-making, and drawing and design; modelling resources for laser-cutting, rapid-prototyping, wet-casting; concrete, wood and metal workshops.

“

**UWE Bristol breaks the mould, offering fantastic facilities and incredible international opportunities – such as field trips to New York. I have found UWE Bristol to be a place that's constantly evolving, and in architecture that's a great place to be.**

Louise  
PGCert Architecture

Course code	Course	Delivery	Campus	Start month	Accreditation*
K10B1	MArch Architecture <sup>§†</sup>	FT, PT	Frenchay	September	ARB, RIBA, BAM
K9011	MRes Architecture, Design and the Built Environment <sup>^</sup>	FT, PT	Frenchay	September	
K2101	MSc Building Information Modelling (BIM) in Design Construction and Operations	FT, PT	Frenchay	September or January	RICS, CIOB
K90D1	MSc Facade Engineering	FT, PT	Frenchay	September	
K10A	PGCert Prof Practice and Management in Architecture	PT	Frenchay	January with an induction in November	ARB, RIBA
F7901	MA Urban Design	FT	Frenchay	September	

### Key:

FT Full-time  
PT Part-time

\* For full accreditation names please see page 76.

§ Applicant may be asked to provide a portfolio.

† Applicant may be required to attend an interview.

^ Applicant will be asked to provide a research proposal.

For full information on entry requirements, including required subjects, grades and alternative qualifications please visit our website.



# ART AND DESIGN

Study with us and develop your talent in a thriving, creative environment. Extend your practice in inspiring spaces where courses provide everything you'll need to further your career as a creative professional. Our resources and influential partnerships with leading arts organisations will ensure you get the most out of your experience with us.



Find out more by visiting:  
[uwe.ac.uk/subjects/art](https://uwe.ac.uk/subjects/art)

## Make the most of our connections

You'll have access to a range of purpose-built teaching spaces and industry standard facilities across our City Campus locations at Bower Ashton Studios and partner sites at Arnolfini and Spike Island – both internationally-renowned centres for contemporary art and design. Exceptional facilities include production and fabrication workshops, offering a combination of traditional tools and the latest technology, extensive printmaking facilities and a library dedicated to the creative industries.

Connections are everything. We'll give you a platform to expand your network with influential employers, collaborators, artists and designers. Our annual Degree Show is attended by thousands of visitors and offers an excellent opportunity to showcase your work. Through our partnerships with studios, festivals and cultural institutions we can offer you practical experience, inspiring lecturers, exhibitions, master classes by industry experts, and practice-based projects with some of the leaders in the Art and Design field.

“

**I was keen to develop my career in the historic environment sector. The knowledge and experience of curating I gained through my placement was life-changing, and enabled me to secure a job as curator for the National Trust.**

Fridy  
MA Curating

Course code	Course	Delivery	Campus	Start month
W9911	MRes Culture <sup>‡</sup>	FT, PT	Frenchay	September
W90L12	MA/MFA Curating <sup>‡</sup>	FT	City Campus	January
W2001	MA Design <sup>§‡</sup>	FT, PT	City Campus	September
E10112	MA Fine Art <sup>§‡</sup>	PT	City Campus	September
W21D12	MA Graphic Arts <sup>§‡</sup>	FT, PT	City Campus	September
WW1212	MA Multi-Disciplinary Printmaking <sup>§‡</sup>	FT, PT	City Campus	September

### Key:

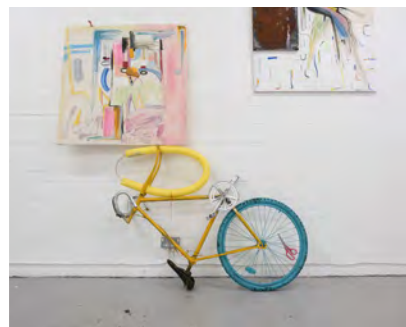
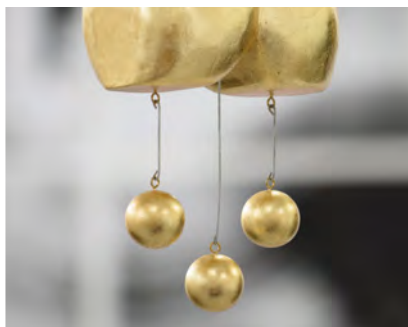
FT Full-time

PT Part-time

§ Applicant may be asked to provide a portfolio.

‡ Applicant will be required to attend an interview.

For full information on entry requirements, including required subjects, grades and alternative qualifications please visit our website.



# ARTS AND CULTURE

With its celebrated and pioneering cultural scene, Bristol is one of the best places in the UK to study arts and cultural subjects. Right at the heart of the creative community, we have close links with the city's leading arts organisations. Develop your skills alongside practising professionals and build your network. Join us, and you'll be in a strong position to move your career forward.

Find out more by visiting:  
[uwe.ac.uk/subjects/culture](http://uwe.ac.uk/subjects/culture)

## Follow your life's passion

Working closely with Bristol's thriving creative sector means plenty of opportunity for you to develop hands-on skills and experience with our partners. We work alongside world-class arts venues such as M-Shed and Watershed, where we helped create the Pervasive Media Studio, an innovative space for the exploration of experience design and creative technology. Building productive professional networks is a must for your career development, and we make sure there are plenty of opportunities for you to develop these throughout your time with us.

Developing a solid understanding of theory as well as practice is important. Our staff are world-leading researchers in their fields who publish widely, and work with partners to produce impactful subject-leading research. From collaborating on M-Shed's celebration of seven decades of Bristol music, to curating an Angela Carter exhibition at the Royal West of England Academy, our staff will help you build a peerless research profile, connected to a professional network.

“

**This brilliant course is the perfect balance of practical, theoretical, vital, innovative and inspirational learning. As well as the practical skills it's helped me develop, the links I'm making are invaluable.**

**Graham**

MA Creative Producing



Course code	Course	Delivery	Campus	Start month
P30B1	MA Contemporary Film Culture	FT, PT	City Campus	September
P3101	MA/MFA Creative Producing <sup>‡</sup>	FT, PT	City Campus	September
W9911	MRes Culture <sup>‡</sup>	FT, PT	Frenchay	September

### Key:

FT Full-time

PT Part-time

<sup>‡</sup> Applicant will be required to attend an interview.

For full information on entry requirements, including required subjects, grades and alternative qualifications please visit our website.

# BUILT ENVIRONMENT

Interested in developing your career in the construction or property sectors? We'll inspire you to develop your knowledge and hone the skills you need to compete in today's ever-changing market. We'll equip you with the right blend of theory and practice needed for your role in these dynamic, fast moving industries. Study with us, and you'll learn to develop creative solutions to solve problems, and to question how to do things more efficiently and economically.



Find out more by visiting:  
[uwe.ac.uk/subjects/built](http://uwe.ac.uk/subjects/built)

## Making better places and spaces

Long-standing links with leading employers such as JLL, Savills, BNP Paribas, Aecom, Arcadis, Mace, BAM and Atkins influence our courses. Our staff include chartered surveyors, construction professionals and property experts with many years' experience and we have significant input from part-time visiting practitioners and external speakers. Our courses also draw on the research and consultancy carried out in the department.

We're equipped with industry standard IT and you can test practical ideas using the latest Building Information Modelling (BIM), project and property management software. You'll study alongside like-minded people as you expand your knowledge and explore new ideas.

Course code	Course	Delivery	Campus	Start month	Accreditation*
K2101	MSc Building Information Modelling (BIM) in Design Construction and Operations	FT, PT	Frenchay	September or January	RICS, CIOB
K23A12	MSc Building Surveying	FT, PT	Frenchay	September	RICS, CIBE
K23012	PGDip Building Surveying	FT, PT	Frenchay	September	
K90012	MSc Construction Project Management	FT, PT	Frenchay	September or January	RICS, CIOB
K90D1	MSc Facade Engineering	FT, PT	Frenchay	September	
K24012	GDip Quantity Surveying	FT, PT, DL	Frenchay	September	RICS, CICES
KN231	MSc Real Estate Finance and Investment	FT, PT	Frenchay	September or January	RICS
KN2B6	MSc Real Estate Finance and Investment	DL, PT	Frenchay	September or January	RICS
KN4112	MSc Real Estate Management	FT, PT	Frenchay	September or January	RICS
KN4A6	MSc Real Estate Management	DL, PT	Frenchay	September or January	RICS

### Key:

FT Full-time

PT Part-time

DL Distance learning

\* For full accreditation names please see page 76.

For full information on entry requirements, including required subjects, grades and alternative qualifications please visit our website.

# BUSINESS AND MANAGEMENT

Studying with us will equip you with the leadership qualities and real-world skills necessary for that next professional step. Our contribution to entrepreneurship has been recognised by the Chartered Association of Business Schools and we're one of 37 UK business schools to hold the Small Business Charter award.

Find out more by visiting:  
[uwe.ac.uk/subjects/business](http://uwe.ac.uk/subjects/business)

## Advance yourself with unlimited business possibilities

Be inspired by the diversity and entrepreneurial energy that surrounds our leading Bristol Business School. Purpose-built with you in mind, it provides the best possible inclusive and innovative learning experience with the feel of a genuine business environment. You'll benefit from Harvard lecture theatres, technology enhanced classrooms and flexible social learning areas, and share a variety of collaborative spaces with actual businesses, such as the Institute of Directors (IoD).

Through enthusiastic, research-active experts and visiting speakers, you'll learn from industry examples and engage in real business simulation projects. Alongside learning with an international focus, there will be opportunities to work with local companies, and to share your expertise with small businesses through our Business Advice Clinic. Teaching is current, practice-led and designed to prepare you for the challenges and decisions you'll face in your career – enabling you to be bold, take risks and fulfil your business potential.

Course code	Course	Delivery	Campus	Start month	Accreditation*
N12212	Master of Business Administration (MBA)	FT	Frenchay	September or January	CMI
N1224	Master of Business Administration (Executive) MBA	PT	Frenchay	September or January	CMI
N20B12	MSc Business Management	FT, PT	Frenchay	September	
N1946	PGCert Enterprise	DL	Online	November, January or May	
N5I11	MSc Digital Marketing <sup>‡</sup>	FT	Frenchay	September	
N8201	MSc Events Management	FT, PT	Frenchay	September	
N630M2	MSc Human Resource Management	FT, PT	Frenchay	September	CIPD
N6001	MSc Human Resource Management (International)	FT	Frenchay	September	CIPD
N9011	MSc Innovation and Applied Entrepreneurship	FT, PT	Frenchay	September	
N14512	MSc International Management	FT	Frenchay	September or January	
N50012	MSc Marketing	FT	Frenchay	September	
N50212	MSc Marketing Communications	FT, PT	Frenchay	September	

### Key:

FT Full-time

PT Part-time

DL Distance learning

\* For full accreditation names please see page 76.

<sup>‡</sup> Subject to final UWE Bristol approval.

For full information on entry requirements, including required subjects, grades and alternative qualifications please visit our website.

# COMPUTING

Are you inspired by technology and information science? Are you intrigued by the power and potential of computing to transform organisations, build economies and drive breakthroughs in science and business? Do you want to develop specialist skills and get ahead in this industry? We'll give you the knowledge and practical expertise you'll need in your career, whether you pursue cyber security, software systems engineering or information management. We'll equip you to solve real-world problems and enrich society.

Find out more by visiting:  
[uwe.ac.uk/subjects/computing](https://uwe.ac.uk/subjects/computing)

## Help shape the world with ideas that drive change

Our industry links inject real-world experience into our courses. We work with local SMEs, third sector organisations and large corporate IT departments to bring you live and industry relevant projects. Be inspired by specialist industry speakers, professionally accredited courses and staff with both robust academic credentials and industry experience. You can be confident that your qualification will be contemporary and respected by employers.

Experience our first-class facilities designed to stimulate and promote creativity. And our continuing investment in developing and improving our facilities means you will always work with the latest tech.

“

**A broad range of topics and disciplines were taught by expert practitioners who provided hands-on support. The student cohort was as varied as the course content, bringing together professionals from a range of fields and sectors. This allowed for great networking opportunities. The knowledge, skills and multidisciplinary insight I gained informed decisions about my future career focus.**

**Daniel**

MSc Information Management

Course code	Course	Delivery	Campus	Start month	Accreditation*
I9001	MSc Cyber Security	FT, PT	Frenchay	September	
G3901	MRes Data Science <sup>‡</sup>	FT, PT	Frenchay	September	
P11012	MSc Information Management	FT, PT	Frenchay	September	CILIP
G56A12	MSc Information Technology	FT, PT	Frenchay	September	
G70012	MSc Software Engineering	FT	Frenchay	September	BCS

### Key:

FT Full-time

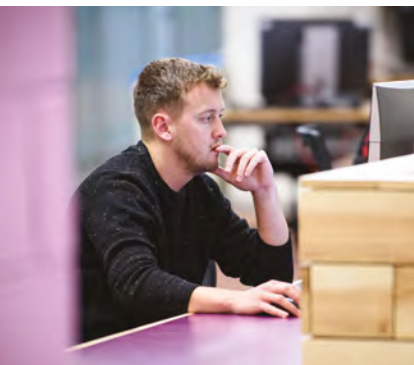
PT Part-time

\* For full accreditation names please see page 76.

‡ Applicant may be required to attend an interview.

^ Applicant will be asked to provide a research proposal.

For full information on entry requirements, including required subjects, grades and alternative qualifications please visit our website.



# CREATIVE TECHNOLOGIES

Do you want to advance in the technological or creative industries? Do you want to push boundaries, take risks and challenge convention? Creative technologies is evolving into one of the most exciting and challenging areas of academic study, encompassing the study of both technology and creative practice. With an emphasis on practice, our courses will develop your technical and artistic skills enabling you to excel in this dynamic field.



Find out more by visiting:  
[uwe.ac.uk/subjects/creativetech](http://uwe.ac.uk/subjects/creativetech)

## Enabling creativity through technology

Our staff have both strong academic backgrounds and practical experience, ensuring our teaching, research and learning environment is contemporary and relevant. Benefit from our strong partnerships in the sector with studios, venues, small businesses and large organisations including the BBC. This practical approach will encourage you to create and evaluate your practice, applying technological and creative solutions in different contexts.

You'll be inspired by our first-class facilities designed to simulate the real world and promote creativity. And our continuing investment in developing and improving our learning environment means you will always work with the latest technology. You'll also have the opportunity to work on live briefs supported by UWE Bristol's in-house music and games enterprise studios, PlayWest and Impulse.

“

**Our courses offer an amazing space to develop your creativity and knowledge of technology and to explore your practice – whether that's by creating your own content or developing the tools for others to use.**

**Adrian Hull**

Associate Head of Department:  
Creative Technologies

Course code	Course	Delivery	Campus	Start month
I6001	MSc Commercial Games Development	FT	Frenchay	September
I9W91	MSc Creative Technology	FT, PT	Frenchay	September
W3701	MSc Music Technology <sup>‡</sup>	FT	Frenchay	September

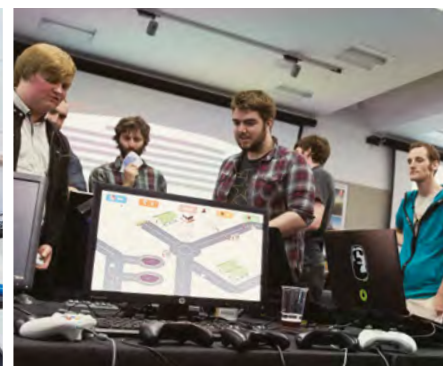
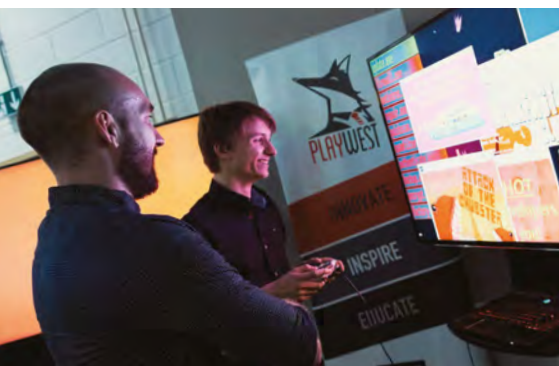
### Key:

FT Full-time

PT Part-time

<sup>‡</sup> Applicant will be required to attend an interview.

For full information on entry requirements, including required subjects, grades and alternative qualifications please visit our website.



# EDUCATION AND CHILDHOOD

Do you have the talent to inspire people to reach their full potential?  
Are you fascinated by the social, psychological and policy factors that influence young people's lives? At UWE Bristol you'll be part of the future of learning: where the latest technology and challenging new ideas are transforming the way we approach education.



Find out more by visiting:  
[uwe.ac.uk/subjects/education](https://uwe.ac.uk/subjects/education)

## Inspire the learning of tomorrow

Join one of the largest and most successful providers of postgraduate courses for education and childhood in the South West. You'll have the chance to be involved with the latest thinking in childhood development, education and teaching. You'll experience an exciting, future-facing environment and explore a rapidly changing landscape where new questions are being asked and new understandings emerging. We have an impressive track record of nurturing highly successful teachers through our initial teacher training programmes, and of supporting the continued academic and professional development of those working in the education, childhood and cultural sectors.

At the heart of everything we do are our partnerships, with more than 200 educational and cultural providers across the South West and beyond. Through these you'll enjoy excellent work-based opportunities, allowing you to explore, share and shape best practice.

We'll also support you in developing your own research as you become a truly transformational professional, nurturing and inspiring the learners of tomorrow.

Course code	Course	Delivery	Campus	Start month
X00042	MA Education	PT	Frenchay	September, January or April
X0084	MA Education (Early Years)	PT	Frenchay	September
X90012	Professional Doctorate in Education	PT	Frenchay	September
X121	PGCE Primary Early Years Initial Teacher Education (3–7)†	FT	Frenchay	September
X171	PGCE Primary Initial Teacher Education (5–11)†	FT	Frenchay	September
W1X1	PGCE Secondary Initial Teacher Education Art and Design†	FT	Frenchay	September
2WQH	PGCE Secondary Initial Teacher Education Biology with Science†	FT	Frenchay	September
34FW	PGCE Secondary Initial Teacher Education Business†	FT	Frenchay	September
F1X1	PGCE Secondary Initial Teacher Education Chemistry with Science†	FT	Frenchay	September
2WQG	PGCE Secondary Initial Teacher Education Computer Science†	FT	Frenchay	September
Q3X1	PGCE Secondary Initial Teacher Education English†	FT	Frenchay	September
F8X1	PGCE Secondary Initial Teacher Education Geography†	FT	Frenchay	September
V1X1	PGCE Secondary Initial Teacher Education History†	FT	Frenchay	September
G1X1	PGCE Secondary Initial Teacher Education Mathematics†	FT	Frenchay	September
R9X1	PGCE Secondary Initial Teacher Education Modern Languages†	FT	Frenchay	September
F3X1	PGCE Secondary Initial Teacher Education Physics with Science†	FT	Frenchay	September

### Key:

FT Full-time

PT Part-time

† Applicant will be required to attend an interview.

For full information on entry requirements, including required subjects, grades and alternative qualifications please visit our website.

# ENGINEERING

Bristol is a thriving hub for some of the world's most successful engineering organisations, with the largest aerospace firms in the UK operating in the region. Our close working relationships with industry leaders such as Airbus and Rolls-Royce give you a unique opportunity to be part of a dynamic, forward-thinking community of academics, researchers, practitioners and professionals, dedicated to moving forward, exploring and finding ways to change the world for the better.



Find out more by visiting:  
[uwe.ac.uk/subjects/engineering](https://uwe.ac.uk/subjects/engineering)

## Deliver positive change in the world

Push boundaries and instigate change. You'll be empowered to tackle real-world challenges through live projects, exploring problems and experimenting with solutions. Our partners give us practical insight into the issues they face day-to-day so our courses balance practical application with theoretical understanding. You'll be encouraged to challenge yourself by developing solutions that address the multiple, and sometimes conflicting, requirements that modern organisations face.

Experience our modern equipment and develop the critical thinking and innovative problem-solving skills employers are looking for. With a flight simulator, computer aided design (CAD) suites, manufacturing workshops, wind tunnel and the UK's largest robotics laboratory, you'll have hands-on access to the technology you need to excel.

Course code	Course	Delivery	Campus	Start month	Accreditation*
H40C4	MSc Aerospace	PT	Frenchay	October	IMechE
H20H1	MSc Civil Engineering	FT, PT	Frenchay	September	
H1011	MRes Engineering	FT, PT	Frenchay	September	
H9N21	MSc Engineering Business Management	FT	Frenchay	September	
H19012	MSc Engineering Management	FT	Frenchay	September	
H30B12	MSc Mechanical Engineering	FT, PT	Frenchay	September	IMechE
H10D12	MSc Professional Engineering	PT	Frenchay	Flexible	
H67A1	MSc by Research, Robotics	FT, PT	Frenchay	September or January	
H67B1	MSc Robotics	FT	Frenchay, University of Bristol	September	
K46D1	MSc Transport Engineering and Planning	FT, PT	Frenchay	September	CIHT, CILT, ICE, IHE, IStructE, TPP

### Key:

FT Full-time

PT Part-time

\* For full accreditation names please see page 76.

For full information on entry requirements, including required subjects, grades and alternative qualifications please visit our website.



# FILMMAKING, ANIMATION AND PHOTOGRAPHY

Bring your ideas to life in an environment that encourages and supports your talent and development. Bristol is one of the largest creative hubs outside of London and attracts filmmakers, animators and photographers from all over the world. You'll be in the right place to build on your potential and forge collaborations, which will influence and shape your individual style.



Find out more by visiting:  
[uwe.ac.uk/subjects/filmmaking](http://uwe.ac.uk/subjects/filmmaking)

## Immerse yourself in a vibrant creative community

With input from industry experts, our courses will prepare you to take your next step into roles across the creative sector. You'll benefit from our strong partnerships with sector leaders, such as Aardman and the BBC, through to a growing community of independent production companies and photography studios. You'll learn from the best in the business, gaining industry insight as well as work experience opportunities and the chance to attend networking events and screenings.

Enjoy full access to our £7 million production and post-production facilities, focused around filmmaking, animation and photography. Develop your skills in our editing and dubbing suites and photographic, animation, production and professional standard TV studios, equipped with high-end technology, industry standard software, and modern 2D and 3D model animation equipment.

There'll also be plenty of opportunities to showcase your efforts at our annual Degree Show, or at exhibitions and film premieres, which draw employers, media and talent spotters from all over the UK.

Course code	Course	Delivery	Campus	Start month	Accreditation*
W92012	MA Animation <sup>§‡</sup>	FT	City Campus	September	CS
P30B1	MA Contemporary Film Culture	FT, PT	City Campus	September	
W9911	MRes Culture <sup>‡</sup>	FT, PT	Frenchay	September	
P39A1	MA Documentary Production <sup>‡</sup>	FT	City Campus	September	
W6411	MA Photography <sup>§‡</sup>	FT, PT	City Campus	September	AOP
I7101	MA Virtual Reality <sup>§‡</sup>	FT	City Campus	January	
D4P31	MA Wildlife Filmmaking <sup>§‡</sup>	FT	City Campus	September	

### Key:

FT Full-time

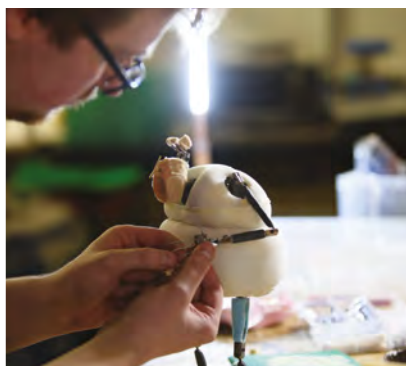
PT Part-time

\* For full accreditation names please see page 76.

§ Applicant may be asked to provide a portfolio.

‡ Applicant will be required to attend an interview.

For full information on entry requirements, including required subjects, grades and alternative qualifications please visit our website.



# GEOGRAPHY, PLANNING AND ENVIRONMENTAL MANAGEMENT

Are you driven by the important issues that affect our environment and want to make a difference? Our courses explore the global challenges society is facing and the practical solutions that can help resolve them. Using field work, real-life examples and by working collaboratively with leading industry practitioners we offer you relevant professionally accredited taught master's degrees, and research opportunities in transport, environmental management, flood risk and sustainability.

Find out more by visiting:

[uwe.ac.uk/subjects/geography](http://uwe.ac.uk/subjects/geography)

## Explore solutions for a sustainable world

We've strong consultancy links with the UK government, the European Union and other clients across a range of sectors, both regionally and internationally. We use these contacts to inform teaching so that courses remain current, practice-facing and relevant to industry employers. This relevance is demonstrated by the accreditations that many of our courses have earned. Endorsements include the Institution of Environmental Sciences through to the Royal Town Planning Institute, and a range of civil and transport engineering professional bodies.

Expert staff are connected to, or practising in, industry, and undertake scholarship and transformational research in areas such as air quality, climate change, water management and flood, travel behaviour, autonomous vehicles and sustainable communities. They'll provide you with the support you'll need to develop the knowledge, skill set and experience to achieve your goals.

Enhance your technical know-how and solve real world problems in our well-equipped facilities, providing all you'll need to develop robust knowledge and research skills in specialist laboratories. You'll also have access to excellent library facilities with many online resources.

“

**I've recently become the Sustainability Projects Lead at the University of London, allowing me to utilise all of the behaviour change and campaign management skills I learnt at UWE Bristol. I can't stress how invaluable the course has been in transforming my career!**

**Matthew**

MSc Sustainable Development in Practice

Course code	Course	Delivery	Campus	Start month	Accreditation*
H20H1	MSc Civil Engineering	FT, PT	Frenchay	September	
G3901	MRes Data Science <sup>†</sup>	FT, PT	Frenchay	September	
F90012	MSc Environmental Consultancy	FT, PT	Frenchay	September	IES
F1N21	MSc Environmental Management	FT, PT	Frenchay	September	IES
F8101	MRes Geography and Environmental Management <sup>†</sup>	FT, PT	Frenchay	September	
K4931	MSc Planning Major Projects	FT	Frenchay	September	RTPI
L90B1	MRes Social Research (Health & Wellbeing)	FT, PT	Frenchay		
L90A1	MRes Social Research (Sustainable Futures)	FT, PT	Frenchay		
F8NA1	MSc Sustainable Development in Practice	FT, PT	Frenchay	September	
K46D1	MSc Transport Engineering and Planning	FT, PT	Frenchay	September	CIHT, CILT, ICE, IHE, IStructE, TPP
K4N912	MSc Transport Planning	FT, PT	Frenchay	September	CIHT, CILT, ICE, IStructE, RTPI
K44062	MSc Urban and Rural Planning	DL		January	RTPI
K4911	MSc Urban Planning	FT, PT	Frenchay	September	RTPI

### Key:

FT Full-time

PT Part-time

DL Distance learning

\* For full accreditation names please see page 76.

† Applicant may be required to attend an interview.

^ Applicant will be asked to provide a research proposal.

For full information on entry requirements, including required subjects, grades and alternative qualifications please visit our website.

# JOURNALISM, MEDIA AND PUBLIC RELATIONS

Bristol is the place to be for the creative industries. As one of the most successful media hubs outside of London, it attracts journalists from around the world. Working closely with a wide range of news and current affairs partners, you'll have plenty of opportunities to immerse yourself in a diverse media community while developing the skills you need to stand out from the crowd.

Find out more by visiting:  
[uwe.ac.uk/subjects/media](http://uwe.ac.uk/subjects/media)

## Tell a compelling story

Benefit from our strong partnerships with sector leaders, such as the BBC, which help to inform our teaching as well as giving you opportunities to gain work experience in local, national or international media outlets. This unique partnership offers you a valuable mentoring scheme, providing support and guidance with your journalism practice and career.

Develop your skills in our professional standard TV studios, including our new post-production facility with sound and picture editing and grading suites. With a rolling programme of industry speakers and live briefs from industry, we'll help you develop your industry knowledge and entrepreneurial skills needed to fulfil your career aspirations.

“

**You'll be working in vibrant Bristol with diverse and engaged colleagues, learning the latest techniques. Our teaching staff bring industry experience to help you develop your full potential.**

**Phillip Chamberlain**  
Head of Department  
Film and Journalism

Course code	Course	Delivery	Campus	Start month	Accreditation*
W9911	MRes Culture <sup>‡</sup>	FT, PT	Frenchay	September	
P39A1	MA Documentary Production <sup>‡</sup>	FT	City Campus	September	
P50012	MA Journalism	FT	City Campus	September	BJTC
P3121	MA Radio Documentary <sup>‡</sup>	FT	City Campus	September	

### Key:

FT Full-time

PT Part-time

\* For full accreditation names please see page 76.

‡ Applicant will be required to attend an interview.

For full information on entry requirements, including required subjects, grades and alternative qualifications please visit our website.



# LAW

Get ready to be welcomed into a community of like-minded people who share your drive. Benefit from our experience (40 years as a leader in legal education), our strong national and international reputation and established links with both the legal profession and business community. Join us, and you'll develop stand-out legal skills in a supportive and influential community.



Find out more by visiting:  
[uwe.ac.uk/subjects/law](http://uwe.ac.uk/subjects/law)

## Be a positive force for change

Access the full range of Professional Law programmes validated by the Solicitors Regulation Authority (SRA) and the Bar Standards Board, as well as academic master's (LLM) degrees.

Make use of our long-established connections with Bristol Law Society; regional law firms such as Thrings and Osborne Clarke; and chambers such as Albion and Guildhall Chambers. Get involved in our award-winning pro-bono activities – in 2016, we were voted pro-bono initiative of the year at The Lawyer Awards. You'll get the opportunity to secure work placements, shadow professionals and receive career guidance to support your studies and fast-track your career.

With our master's courses you will be immersed in an internationally focused learning environment, based on active academic research and taught by experts in their field.

Develop your professional skills in our £55 million state-of-the-art building where you'll have access to four mock courtrooms, equipped with the latest recording technology, Harvard style lecture theatres, plus social spaces designed for individual study, group work, and local business engagement.

Course code	Course	Delivery	Campus	Start month
M3AC12	LLM Advanced Legal Practice (LPC)	FT, PT	Frenchay	September
M99A1	LLM Bar Professional Training Studies (BPTC)	FT, PT	Frenchay	September
M34A12	LLM Commercial Law	FT, PT	Frenchay	September or January
M29A1	LLM Environmental Law and Sustainable Development	FT, PT	Frenchay	September or January
M29A2	LLM International Banking and Finance Law	FT, PT	Frenchay	September or January
M30G12	LLM International Law	FT, PT	Frenchay	September or January
M34C12	LLM International Trade and Economic Law	FT, PT	Frenchay	September or January
M99017	Graduate Diploma Law	FT	Frenchay	September
M99067	Graduate Diploma Law	PT	Frenchay	September
M30B48	Professional Skills Course	PT	Frenchay, Exeter	Flexible

### Key:

FT Full-time

PT Part-time

For full information on entry requirements, including required subjects, grades and alternative qualifications please visit our website.

# NURSING AND MIDWIFERY

Like yours, our focus is on making a positive difference to people's lives. Let us help you develop your clinical capabilities, intellectual capacity and professional attributes with an innovative, theoretical and practice-focused learning experience. We will empower you to challenge, lead and transform care for the better, throughout your career.

Find out more by visiting:  
[uwe.ac.uk/subjects/nursing](http://uwe.ac.uk/subjects/nursing)

## Sharpen your skills and make a positive difference

Our courses incorporate modern learning technologies and approaches, and are developed and delivered in close collaboration with our clinical partners, research colleagues and service users. You'll be taught by specialists with expert knowledge of the latest research and how it's relevant to health and social care today.

Experience first-class facilities carefully designed to develop your knowledge and skills and to suit your career progression. Practise in our multi-million pound skills and simulations suites, or in our sensory suite and consultation rooms. Everything you need to develop your professional and clinical skills is here.

We'll support you to enhance and refine your practice through theoretical underpinning. You'll gain confidence negotiating and making decisions in a fast-moving and evolving environment. There's a range of flexible post-qualifying courses and continuing professional development (CPD) options giving you the support and direction you need to develop your clinical practice.



Course code	Course	Delivery	Campus	Start month	Accreditation*
B99J12	MSc Advanced Practice	PT	Glenside	Flexible	
B71212	PGDip Public Health (Specialist Community Public Health Nursing)	FT, PT	Glenside, Plymouth	January	NMC
B70012	MSc Specialist Practice (District Nursing)	PT	Glenside	Flexible	

### Key:

FT Full-time

PT Part-time

\* For full accreditation names please see page 76.

For full information on entry requirements, including required subjects, grades and alternative qualifications please visit our website.

# SCIENCE

Together, we seek to understand the challenges our world is facing and aim to resolve them. Join our community of bright, passionate pioneers who are naturally curious, and motivated by an unwavering belief that their work really matters. Develop relevant skills for your career or research through a balance of insightful learning, the latest facilities, expert research and productive partnerships.

Find out more by visiting:  
[uwe.ac.uk/subjects/science](https://uwe.ac.uk/subjects/science)

## Explore and improve the world around you

Our partnerships are integral to providing the working knowledge and networks that you'll need to help you realise your ambitions. We work with local, national and international leaders in the sector such as GlaxoSmithKline, Bristol Zoo Gardens and the NHS to ensure you're learning and researching the latest theories and ideas.

Explore new concepts and enhance your technical skills in our dedicated study spaces. We've invested over £3 million in the latest lab facilities and technology. You can map habitats and gather data from drones using specialised software in our digital technology suite. All this enables you to develop key skills and experience that will prepare you for your next steps towards a professional future.

Course code	Course	Delivery	Campus	Start month	Accreditation*
C1841	MSc Advanced Wildlife Conservation in Practice	FT, PT	Frenchay, Bristol Zoo Gardens	January	
C99K1	MRes Applied Sciences‡	FT, PT	Frenchay	September	
C9001	MSc Biomedical Science	FT, PT	Frenchay	September	IBMS
B90011	Professional Doctorate in Biomedical Science	PT	Frenchay	January	
P90A4	PGCert Practical Science Communication	PT	Frenchay	September	
P90012	MSc Science Communication	FT, PT	Frenchay	September	

### Key:

FT Full-time

PT Part-time

\* For full accreditation names please see page 76.

‡ Applicant will be required to attend an interview.

For full information on entry requirements, including required subjects, grades and alternative qualifications please visit our website.



# SOCIAL SCIENCES

Making a difference to society may seem ambitious, but it's exactly what you'll be doing here. Build your confidence and find new ways to apply your knowledge by getting immersed in a specialist subject. You'll develop your skills and refine your ability to question, critique and evaluate the world around you.

Find out more by visiting:  
[uwe.ac.uk/subjects/socialsciences](https://uwe.ac.uk/subjects/socialsciences)

## Enrich the world you live in

We provide a range of dynamic, accredited courses, supporting a variety of subjects. These are designed to meet nationally recognised standards for education and training, assisting you in achieving your professional goals.

Our strong networks and partnerships include NGOs, NHS partners, local schools, Avon and Somerset Police, local authorities, local prisons and housing associations. Our partners influence course content and help ensure that teaching is always in line with the skills and experience employers are looking for.

Our world-class research, volunteering opportunities and links to world-wide organisations give you the opportunity to get close to the key ideas and issues, and make the right connections. You'll also be part of work that drives change, makes news headlines and changes people's lives for the better.

We've built an excellent reputation for teaching quality and many courses are externally accredited by professional bodies such as the British Psychological Society (BPS), Health and Care Professions Council (HCPC), the Chartered Institute of Environmental Health (CIEH) and the Agency for Public Health Education Accreditation (APHEA). Our applied courses encourage you to use your knowledge and help solve the problems many people face every day. By extending your experience, practical skills and self-awareness, we'll support you towards becoming a practitioner.

“

**The course was amazing for making students more employable. I began work as a health promotion specialist in diabetes prevention directly after graduating.**

Jack

MSc Health Psychology

Course code	Course	Delivery	Campus	Start month	Accreditation*
LC5811	Doctor of Counselling Psychology <sup>‡</sup>	FT, PT	Frenchay	September	BPS, HCPC
B90032	MSc Environmental Health	FT, PT	Frenchay	September	CIEH
B9181	MSc Environmental Health	DL	Online	September	CIEH
B9191	MSc Environmental Health Professional Practice	FT, PT	Frenchay	September	CIEH
CB8942	MSc Health Psychology <sup>‡</sup>	FT, PT	Frenchay	September	BPS
C84141	Doctor of Health Psychology <sup>‡</sup>	PT	Frenchay	November	BPS, HCPC
B99942	MA Music Therapy <sup>‡</sup>	PT	Glenside	September	HCPC
C8111	MSc Occupational Psychology	FT, PT	Frenchay	September	BPS, ABP
BL9412	MSc Public Health	FT, PT	Frenchay	September	APHEA
C8BA1	MRes Social Sciences <sup>‡</sup>	FT, PT	Frenchay	September	
C8901	MSc Sport and Exercise Psychology <sup>‡</sup>	FT, PT	Frenchay	September	BPS

### Key:

FT Full-time

PT Part-time

DL Distance learning

\* For full accreditation names please see page 76.

‡ Applicant will be required to attend an interview.

For full information on entry requirements, including required subjects, grades and alternative qualifications please visit our website.

# SOCIAL WORK

Social workers are special people – passionate, motivated and dependable. We'll build on your innate empathy and natural sense of justice, help deepen your knowledge of the sector and consolidate, extend and develop your practice. We'll help you to progress and develop your skills throughout your career.

Find more by visiting:  
[uwe.ac.uk/subjects/socialwork](http://uwe.ac.uk/subjects/socialwork)

## Make a difference to people's lives

Our emphasis is on work-based learning and we'll encourage you to think critically about your own practice in a wide range of situations. On our professional development award you'll have access to a flexible framework of opportunities, meaning you can tailor your study depending on where you are in your career. Alternatively, if you're a professional seeking to work as a registered Approved Mental Health Practitioner, you can gain access to specific and externally accredited training.

You'll be taught by enthusiastic and supportive staff, many of them fellow social work practitioners. You'll work alongside a wide range of service users, carers and other professionals to enhance wellbeing. The courses are informed by the sector ensuring the skills you learn are relevant and up-to-date.

“

**The course offered a good mix of lecturers, many of whom are in practice themselves. Peer support from fellow trainees was invaluable and everyone was really supportive.**

**Rachael**

PGCert Approved Mental Health Practice



Course code	Course	Delivery	Campus	Start month	Accreditation*
C84C1	PGCert Approved Mental Health Practice	FT	Frenchay, Glenside	September	HCPC
Y00HSW	MSc Professional Development (Social Work)	PT	Glenside	Flexible	

**Key:**

FT Full-time

PT Part-time

\* For full accreditation names please see page 76.

For full information on entry requirements, including required subjects, grades and alternative qualifications please visit our website.

# THE APPLICATION PROCESS

We've pulled together some useful information regarding the application process but if you have any other queries about applying to UWE Bristol, we are always happy to answer them. Simply email [admissions@uwe.ac.uk](mailto:admissions@uwe.ac.uk) or call us on +44 (0)117 32 83333.

## Making your application

### Postgraduate taught courses

With the exception of the courses listed below, you should apply online at [uwe.ac.uk](http://uwe.ac.uk) using the 'apply now' link on your chosen course web page. You'll then be able to complete the application form, upload copies of certificates, academic transcripts and references, and submit it electronically. Or you'll be given details of how to submit your application through the appropriate Clearing House. We provide some programmes in partnership with our partner institutions; for further details regarding applying for one of these courses, please refer to the partner website.

### Graduate Diploma in Law (GDL) and LLM in Advanced Legal Practice (including the Legal Practice Course)

Applications for the full-time GDL and LLM in Advanced Legal Practice are made through the Central Applications Board (CAB) and are available online at [lawcabs.ac.uk](http://lawcabs.ac.uk). Applications for the part-time routes are made directly to UWE Bristol using the online application on the course web page.

### LLM Bar Professional Studies (BPTC)

Applications for the full-time and the part-time BPTC must be made via the central online applications system [barsas.com](http://barsas.com). First round applications open in December of the year before entry and close in mid-January.

### Postgraduate Certificate in Education (PGCE)

Applications must be made through UCAS Teacher Training (UTT) at: [ucas.com/ucas/teacher-training/apply-and-track](http://ucas.com/ucas/teacher-training/apply-and-track). On receipt of your application, the University will consider whether you will be invited for interview. If shortlisted, you will receive an invitation to interview by UWE Bristol via your UWE Bristol Welcome website. You will be notified of the outcome of your application via UTT.

Successful applicants must provide a satisfactory Declaration of Health and a further declaration of criminal convictions (Disclosure and Barring Service clearance) before taking up their place. Applicants will be required to pass skills tests in numeracy and literacy.

### Professional and short courses

The application process for professional and short courses can vary according to the course. Your application will be considered by a member of staff from the department where you will be studying.

Please visit: [uwe.ac.uk/professionaldevelopment](http://uwe.ac.uk/professionaldevelopment) for more details on how to apply to these courses.

### Research degrees

Please visit [uwe.ac.uk/research](http://uwe.ac.uk/research) and use the contact details provided in the relevant subject section.

### Welcoming diversity

Inclusivity is one of our core values at UWE Bristol. We have a commitment to actively recruit and attract a more diverse student body, from a wide range of academic and social backgrounds. We consider each application on the basis of an applicant's suitability for the course applied for.

The University is committed to inclusive teaching, assessment and the development and delivery of an inclusive curriculum. We aim to create a truly inclusive university, a place where everyone thrives, there is mutual respect and each individual can see differences as strengths. We encourage staff and students at every level in the organisation to commit to these values.

### Disabled students

UWE Bristol welcomes applications from students who are disabled, including those with mental health conditions, medical conditions and specific learning difficulties such as dyslexia. Approximately 13% of UWE Bristol students have disclosed as disabled.

Please disclose on your application, so we can start to explore your needs with you. If you do disclose, you may be asked to provide additional information about your access and support needs via a questionnaire.

We'll offer you advice related to your disclosure and in some cases, invite you to speak or meet with us in advance of your course starting. We'll help you with reasonable adjustments, support and equipment, including funding. And we'll be happy to help with any questions you have at any point in the process.

You can disclose to us at any time and if you do, we'll only share this information with staff involved with organising your support and reasonable adjustments. It's best to disclose at application stage if possible. The information you disclose will not have an impact on whether you are made an offer to study at UWE Bristol.

Contact the Disability Service:  
Telephone +44 (0)117 32 85678  
Minicom +44 (0)117 32 83644  
Email [disability.advisers@uwe.ac.uk](mailto:disability.advisers@uwe.ac.uk)  
[uwe.ac.uk/disabilityservices](http://uwe.ac.uk/disabilityservices)

### Considering your application

We aim to respond to your application within 14 days, although this can take longer at busy times of the year due to volume of applications. To help us to achieve this, please ensure that you complete all sections of the application form and upload your academic transcripts and two references. On receipt of your application, we will follow the application process outlined below:

- Send an email acknowledging receipt.
- Provide you with access to your personal UWE Bristol Welcome web page where you will be able to view decisions taken on your application and any communications we send you.
- Check your application details are complete and request any additional information we require.
- Assess the suitability of your academic qualifications, including English language ability for international applicants.
- Read your personal statement for evidence of an understanding of, and commitment to, your chosen programme of study as well as details of career or educational aspirations.
- Inform you of the outcome of your application in writing either directly by post or via the UWE Bristol Welcome website, or through the appropriate Clearing House.

For further information regarding our admissions policy please read the PDF version located on our website:

[uwe.ac.uk/policy](http://uwe.ac.uk/policy)

### Immigration–Visa

If you require a visa to study in the UK, you will need to apply for a General Student Visa under Tier 4 of the Points Based System (PBS) immigration system. To apply for a visa under Tier 4, you must have an unconditional offer of a place to study and be issued a Confirmation of Acceptance for Studies (CAS) from an institution which holds a sponsor licence as your visa will be linked to this institution. UWE Bristol has been approved as a Tier 4 sponsor.

Some postgraduate taught courses and some research programmes of longer than six months may require Academic Technology Approval Scheme (ATAS) clearance. If you are studying a course which does require ATAS clearance, we will send you a separate letter to allow you to complete the online application form.

For information on courses which require ATAS clearance, please visit:

[gov.uk/academic-technology-approval-scheme](http://gov.uk/academic-technology-approval-scheme)

# ENTRY REQUIREMENTS

**We keep our entry requirements as straightforward as possible and our standard requirements are explained below. You'll see any course-specific entry requirements within each course listing on the website.**

## Standard entry requirements

- Normally a first degree minimum 2:2 or above from a UK institution, or a degree of comparable standard from an institution outside the UK, unless otherwise stated in the course listing on the website.
- Applicants who can demonstrate relevant significant life or work experience, other qualifications, or their potential to benefit from the course will also be considered.
- The University may be able to recognise successful previous study through Accredited Learning (AL), or assess and award credit through Accredited Experiential Learning (AEL) for knowledge and skills gained in accordance with the University's Academic Regulations. Please contact us if you think you are eligible to be considered for AL or AEL.
- All applicants for postgraduate study need to demonstrate good general education, which includes acceptable levels of literacy and numeracy, normally equivalent to at least grade C/4 at GCSE in English and Maths.
- Applicants for postgraduate research degrees may also be considered on the basis of previous research activity or publications, other qualifications and/or significant life or work experience.

## International qualification equivalents

If you have studied outside of the UK please visit: [uwe.ac.uk/international](https://uwe.ac.uk/international) for country-specific information about qualifications from all over the world.

## UWE Bristol English language requirement

All UWE Bristol students must have a recognised English language qualification of at least GCSE grade C/4 or equivalent standard. There are specific English language requirements for international and EU students.

If you have a UKVI approved Secure English Language Test (SELT) but not at the required level for entry, you may be able to undertake one of UWE Bristol's Pre-sessional English Language courses to help you achieve the required level.

For details of the recognised English language qualifications and required levels, please visit [uwe.ac.uk/international](https://uwe.ac.uk/international)

# FEES AND FUNDING

## Tuition fees

At the time of printing this prospectus, the tuition fees for 2019 have not been set. For guidance, please see the fees and funding information for 2018/19 on the course pages of our website [uwe.ac.uk](http://uwe.ac.uk)

Tuition fees for part-time study are up to the pro-rata amount of the full-time equivalent.

Please note that international students are not normally able to study part-time due to the immigration restrictions of the Tier 4 student visa.

You can find the latest information on fees for home/EU and international students on our website [uwe.ac.uk/money](http://uwe.ac.uk/money)

## Course costs

Your course will involve additional costs such as books, printing and photocopying, materials, optional field trips and software.

Your tuition fees will cover the cost of compulsory field trips.

## Funding options

The government is providing loans for English-resident and EU students for taught master's degrees. The maximum loan for courses starting from 1 August 2018 is £10,609. Maximum loan for 2019/20 is still being determined by the government. When the loan amount is finalised further details will be on our website: [uwe.ac.uk/postgraduatefunding](http://uwe.ac.uk/postgraduatefunding)

## Data protection

Personal data about students, including records of academic achievements, are stored by the University in accordance with General Data Protection Regulations. The Data Controller for applicant details is the Pro-Vice Chancellor (Commercial Director and Corporation Secretary).

## Quality assurance

The University's quality assurance processes are subject to review by the Quality Assurance Agency for Higher Education (QAA).

## Disclaimer

UWE Bristol has made every effort to make this prospectus as accurate as possible at the time of going to print (August 2018) however, the prospectus is printed up to two years in advance. The University continually enhances our offer by responding to feedback from our students and other stakeholders, which may result in changes to our programmes following publication. The most up-to-date version of a programme will be found on our website.

Very occasionally we have to withdraw or combine programmes due to limited demand as this will have a negative impact on the student experience. When this is the case, we'll advise you as soon as possible before the start of the programme and aim to provide a suitable alternative.

## Accreditation

Our accreditations are continually reviewed by external bodies. For full details on our individual course accreditation, please refer to our online course entries.

# INDEX

## A

Accounting and Finance MSc	33
Advanced Legal Practice LLM	61
Advanced Practice MSc	63
Advanced Wildlife Conservation in Practice MSc	65
Aerospace MSc	53
Animation MA	55
Applied Sciences MRes	65
Approved Mental Health Practice PGCert	69
Architecture MArch	37
Architecture, Design and the Built Environment MRes	37

## B

Bar Professional Training Studies LLM	61
Biomedical Science MSc	65
Biomedical Science Prof Doc	65
Building Information Modelling in Design Construction and Operations MSc	37, 43
Building Surveying MSc	43
Building Surveying PGDip	43
Business Management MSc	45

## C

Civil Engineering MSc	53, 57
Commercial Games Development MSc	49
Commercial Law LLM	61
Construction Project Management MSc	43
Contemporary Film Culture MA	41, 55
Counselling Psychology Doc	67
Creative Producing MA/MFA	41
Creative Technology MSc	49
Culture MRes	39, 41, 55, 59
Curating MA/MFA	39
Cyber Security MSc	47

## D

Data Science MRes	47, 57
Design MA	39
Digital Marketing MSc	45
Documentary Production MA	55, 59

## E

Education MA	51
Education Prof Doc	51
Education (Early Years) MA	51
Engineering MRes	53
Engineering Business Management MSc	53
Engineering Management MSc	53
Enterprise PGCert	45
Environmental Consultancy MSc	57
Environmental Health MSc	67
Environmental Health Professional Practice MSc	67
Environmental Law and Sustainable Development LLM	61
Environmental Management MSc	57
Events Management MSc	45

## F

Facade Engineering MSc	37, 43
Finance MSc	33
Fine Art MA	39

## G

Geography and Environmental Management MRes	57
Global Political Economy MSc	33
Graduate Diploma Law	61
Graphic Arts MA	39

## H

Health Psychology MSc	67
Health Psychology Doc	67
Human Resource Management MSc	45
Human Resource Management MSc (International)	45

## I

Information Management MSc	47
Information Technology MSc	47
Innovation and Applied Entrepreneurship MSc	45
International Banking and Finance Law LLM	61
International Law LLM	61
International Management MSc	45
International Trade and Economic Law LLM	61

## J

Journalism MA	59
---------------	----

## M

Marketing MSc	45
Marketing Communications MSc	45
Master of Business Administration MBA	45
Master of Business Administration (Executive) MBA	45
Mechanical Engineering MSc	53
Medical Ultrasound MSc	35
Multi-Disciplinary Printmaking MA	39
Music Technology MSc	49
Music Therapy MA	67

## N

Nuclear Medicine MSc	35
----------------------	----

## O

Occupational Psychology MSc	67
-----------------------------	----

## P

Primary Early Years Initial Teacher Education (3-7) PGCE	51
Primary Initial Teacher Education (5-11) PGCE	51
Photography MA	55
Physician Associate Studies MSc	35
Planning Major Projects MSc	57
Practical Science Communication PGCert	65
Professional Development (Social Work) MSc	69
Professional Engineering MSc	53
Professional Practice and Management in Architecture PGCert	37
Professional Skills Course	61
Public Health (Spec Comm PH Nursing) PGDip	63
Public Health MSc	67

## Q

Quantity Surveying GDip	43
-------------------------	----

## R

Radio Documentary MA	59
Radiotherapy and Oncology MSc	35
Real Estate Finance and Investment MSc	43
Real Estate Management MSc	43
Rehabilitation MSc	35
Research Robotics MSc	53
Robotics MSc	53

## S

Secondary Initial Teacher Education Art and Design PGCE	51
Secondary Initial Teacher Education Biology with Science PGCE	51
Secondary Initial Teacher Education Business PGCE	51
Secondary Initial Teacher Education Chemistry with Science PGCE	51
Secondary Initial Teacher Education Computer Science PGCE	51
Secondary Initial Teacher Education English PGCE	51
Secondary Initial Teacher Education Geography PGCE	51
Secondary Initial Teacher Education History PGCE	51
Secondary Initial Teacher Education Mathematics PGCE	51
Secondary Initial Teacher Education Modern Languages PGCE	51
Secondary Initial Teacher Education Physics with Science PGCE	51
Science Communication MSc	65
Social Research (Health & Wellbeing) MRes	57
Social Research (Sustainable Futures) MRes	57
Social Sciences MRes	67
Software Engineering MSc	47
Specialist Practice MSc (District Nursing)	63
Sport and Exercise Psychology MSc	67
Sustainable Development in Practice MSc	57

## T

Transport Engineering and Planning MSc	53, 57
Transport Planning MSc	57

## U

Urban and Rural Planning MSc	57
Urban Design MA	37
Urban Planning MSc	57

## V

Virtual Reality MA	55
--------------------	----

## W

Wildlife Filmmaking MA	55
------------------------	----

If you would like any part of this document in an alternative format (eg large print, audio, braille), please let us know.

# COURSE ACCREDITATIONS

**ABP**

Association for Business Psychology

**ACCA**

Association of Chartered Certified Accountants

**AOP**

Association of Photographers

**APHEA**

Agency for Public Health Education Accreditation

**ARB**

Architects Registration Board

**BAM**

Board of Architects Malaysia

**BAMT**

British Association for Music Therapy

**BCS**

British Computer Society

**BJTC**

Broadcast Journalism Training Council

**BPS**

British Psychological Society

**CABE**

Chartered Association of Building Engineers

**CASE**

Consortium for the Accreditation of Sonographic Education

**CICES**

Chartered Institute of Civil Engineering Surveyors

**CIEH**

Chartered Institute of Environmental Health

**CIHT**

Chartered Institution of Highways and Transportation

**CILIP**

Chartered Institute of Library and Information Professionals

**CILT**

CILT Chartered Institute of Logistics and Transport

**CIMA**

Chartered Institute of Management Accountants

**CIOB**

Chartered Institute of Building

**CIPD**

Chartered Institute of Personnel and Development

**CMI**

Chartered Management Institute

**CS**

Creative Skillset

**HCPC**

Health and Care Professions Council

**IBMS**

Institute of Biomedical Science

**ICE**

Institution of Civil Engineers

**IES**

Institution of Environmental Sciences

**IHE**

Institute of Highway Engineers

**IMechE**

Institution of Mechanical Engineers

**IStructE**

Institution of Structural Engineers

**NMC**

Nursing and Midwifery Council

**RCOP**

Royal College of Physicians

**RIBA**

Royal Institute of British Architects

**RICS**

Royal Institution of Chartered Surveyors

**RTPI**

Royal Town Planning Institute

**SCoR**

Society and College of Radiographers

**TPP**

Transport Planning Professional



**University of the West of England (UWE Bristol)**

Frenchay Campus  
Coldharbour Lane  
Bristol BS16 1QY  
UK

+44 (0)117 32 83333  
admissions@uwe.ac.uk

**uwe.ac.uk**

