



UNIVERSITY OF
PORTSMOUTH

GIVE ME

A university that believes in me

The University of Portsmouth

**Postgraduate
Prospectus**

2019



**UNIVERSITY OF
PORTSMOUTH**

GIVE ME

A university that believes in me

The University of Portsmouth

**Postgraduate
Prospectus**

2019



Welcome

Choosing where to study your postgraduate degree is a life-changing decision which will have a profound effect on your future. At the University of Portsmouth, we can offer you courses that have direct links with business and industry, and courses led by world-class researchers, all taught by academics who are passionate about their subject and determined to inspire their students.

You'll expand your knowledge and expertise, and realise your potential by enhancing your employability, building your confidence and developing new friendships and networks.

It's people that make great universities, and everyone at Portsmouth is committed to helping you enjoy the best experience possible.

We look forward to welcoming you!

Professor Graham Galbaith, Vice-Chancellor



Contents

2–27

Why Portsmouth

2	Welcome
4	Postgraduate and part-time open evenings
6	It's got to be the University of Portsmouth
8	Current student testimonials
10	Be part of research that changes the world
12	Give me an end to the world's plastics problem
14	Choose your way forward
16	Your next chapter starts here
18	Here when you need us
20	Securing your place
22	Funding your studies
26	Come and say hello

28–73

Course information

30	Give me flexible postgrad study that fits around work
32	Browse our taught courses by category
33	Course listings
42	Inspire and enthuse future generations
48	Fascinated by questions of criminology, justice, security and fraud
68	Develop research skills and pursue a personal project at Master's level
70	Choosing your route to research

74–81

Useful information

75	Terms and conditions
76	Course index alphabetical
81	How to find us

Follow us

- UniversityofPortsmouth
- @portsmouthuni
- UniversityofPortsmouth
- @portsmouthuni

port.ac.uk

POSTGRADUATE AND PART-TIME OPEN EVENINGS

HOW CAN PORTSMOUTH HELP YOU ACHIEVE YOUR AMBITIONS? GET AN IN-DEPTH LOOK AT MASTER'S AND RESEARCH OPPORTUNITIES. HEAR TALKS, VISIT OUR INFORMATION FAIR, AND MEET COURSE LEADERS AND CURRENT STUDENTS.

Visit us in 2019

Wednesday 6 February 2019, 4-7pm
Wednesday 27 March 2019, 4-7pm

Book now at port.ac.uk/visit-postgrad

IT'S GOT TO BE THE UNIVERSITY OF PORTSMOUTH

PORTSMOUTH IS A GATEWAY CITY. A PORT, OPEN TO THE WORLD, WELCOMING GAME CHANGING PEOPLE AND GROUND-BREAKING IDEAS.

At the University, we share that spirit. Our horizons are broad. Our instinct is to explore. Our promise is to inspire. If you want Gold rated teaching, world-leading research and colourful coastal living – it's Portsmouth you're looking for.

Give me a place where my passion can make an impact

Ambitious to make change happen in the world? We'll help you channel your deepest interests into studies with real potential to transform. Our research and teaching is driven by a desire to make a positive difference to communities, countries and the world at large. With space and time to find your niche, you'll discover a lot about yourself, too. Here, you'll become all you can be.

a CV that turns heads

Whatever you study, preparation for your future career will be at the heart of it- whether you're just starting out, seeking to supercharge your skills, or exploring a new direction. You'll gain knowledge, skills and experiences that attract employers. And our expert in-house Careers and Employability team are here to help – from volunteering and work placements, to finding a rewarding next step.

close contacts with industry

You'll get the best from courses designed in collaboration with industry, where what you learn is what businesses need. We partner with local, national and international organisations – for research, knowledge transfer and employment opportunities. And with many courses professionally accredited or validated, you could be on the fast track to qualifying for a profession or chartered status. The broad variety of available accreditations ranges from the Royal Institution of Chartered Surveyors (RICS) to the Chartered Institute of Personnel and Development (CIPD)- and many more.

life-changing advice

A great student experience is about more than what you learn. How you live matters, too. That's why we're here to offer all the help and guidance you need, as you need it. That means everything from housing to funding, from IT to study skills. From day one, you'll have access to a whole range of services, to help you get the very best from your time at Portsmouth.



Teaching
Excellence
Framework



NO.1
IN THE UK FOR BOOSTING
GRADUATE SALARIES
THE ECONOMIST 2017

97.5%
OF GRADUATES WORKING
OR IN FURTHER STUDY
DLHE 2017



**DEDICATED
GRADUATE SCHOOL**
SUPPORTING ALL
RESEARCH STUDENTS

**TOP
25%**
OF UNIVERSITIES FOR
POSTGRADUATE RESEARCH
STUDENT EXPERIENCE
(PRES POSTGRADUATE RESEARCH
EXPERIENCE SURVEY 2017)



'I chose Portsmouth because of the work my supervisor is doing. We have regular contact and I've learnt that while I may not be famous in my field, my ideas are valid and worth expressing.'

Eglantine
Julle-Danière,
PhD in Psychology

'I've loved being able to pick my course subject and title in collaboration with my supervisor, as well as the variety of workshops. With CPD events and employment support, I know the department will support me to build my career past graduation.'

Zay Afzal,
MRes Science



'Take advantage of everything on offer - from learning a language to meeting new friends through clubs and societies. You'll improve your confidence, get more organised and become more independent.'

Blake Seares,
PhD in Languages
and Area Studies



'Getting a postgraduate scholarship was amazing. It made going on to do a Master's easier and less stressful.'

Vincent Pericard,
MSc Accounting
and Finance



BE PART OF RESEARCH THAT CHANGES THE WORLD

EXPLORING. UNCOVERING. SOLVING.
OUR DIVERSE RESEARCH SHARES
ONE COMMON THREAD - THE DESIRE
TO MAKE A VALUABLE DIFFERENCE
IN THE WORLD.

That's why 78 per cent of our research was rated world-leading or internationally excellent for impact in the last research assessment exercise.

At Portsmouth, you'll be taught or supervised by people at the forefront of their disciplines. They'll inspire you to innovate and solve problems that matter.

Give me lives saved in the world's seas

Every day, over 1,000 lives are lost by drowning. Professor Mike Tipton MBE researched cold shock and other neurological, behavioural and physiological factors - leading to the development of life-saving techniques, treatments and technologies.

the most distant cosmic explosion ever seen

Professor Bob Nichol helped to discover one of the rarest supernovas ever, in a far-flung galaxy. The star exploded 10.5 billion years ago, causing a superluminous supernova - making it not just the furthest, but also the oldest and among the brightest ever found.

a voice for women that can't be ignored

By exploring links between earning an income and women's experiences of violence in developing nations, Professor Tamsin Bradley is spreading the word to governments worldwide. As a direct result, she's seeing policy changes and the development of new support schemes.



six new species in prehistoric skies

Professor David Martill was part of a team that discovered six new species of pterosaur - giant winged reptiles that once flew above the heads of dinosaurs. By unearthing such diversity, we have radically changed perceptions of the history of life on earth.

research that stands for equality

As reliance on digital tech grows, women who face challenges like single parenthood and mental health issues are losing out on jobs. Professor Joan Farrer and her team are breaking down barriers by offering upskilling opportunities in areas like games development, VR tech and social media.



'My supervisor is a world leading expert and was very enthusiastic. I got a lot of guidance.'

Margarita Tsakiridou,
PhD in Geography

Give me an end to the world's plastics problem

PLASTIC WASTE IS ONE OF THE MOST SIGNIFICANT POLLUTION PROBLEMS FACING OUR PLANET. IT TAKES CENTURIES TO BREAK DOWN IN THE ENVIRONMENT.

As a result, tons of plastic float in the oceans, in huge islands of rubbish. And beneath the surface, pieces of plastic too small to see are making their way into the food chain.

If we can't make change happen, the consequences will be devastating. Meet two Portsmouth PhD students doing very different work to tackle this huge challenge.

Harry Austin is co-lead author of a ground-breaking research paper, alongside Portsmouth's Professor John McGeehan. They're part of an international team which discovered an enzyme that breaks down plastic bottles.

Now Harry is characterising the enzyme, as part of an exciting plan. He says:

"Once we know the enzyme's characteristics, we can mutate some of its amino acids. We'll engineer the enzyme to be more powerful.

"The aim is to get it to work in a controlled environment, in industry. We'll engineer it to work in higher temperatures, to work faster, and to be more stable so it lasts longer.

"Right now, less than 50 per cent of plastic is recyclable. This research gives the potential to dramatically increase recyclability of one of the world's most abundant plastics.

"I love characterising and engineering at this level. Most of all, I love seeing a practical effect that could benefit the environment, and the health of humans and wildlife."

'Right now, less than 50 per cent of plastic is recyclable. This research gives the potential to dramatically increase recyclability of one of the world's most abundant plastics.'

Harry Austin,
PhD in Biological
Sciences

Serena Cunsolo, who is studying a PhD in Civil Engineering and Surveying, is looking closely at the microplastic particles which enter our seas.

When you wash your clothes, tiny fibres of synthetic plastics like polyester and nylon are shed into the water. They're too small to be caught in the wastewater treatment process. Serena says:

"There's a potential harm because a lot of microplastics attract pollutants, which attach to the surface. If particles are ingested by sea life, the pollutants might transfer to the creatures.

"A lot of microplastics get stuck in what is called 'sludge' – the solid part which comes from wastewater treatment and is used as fertiliser for agricultural land. But as it rains, these particles run off the land and make their way to the ocean anyway.

"I'll be sampling throughout England, to get numbers and build up a national picture – should our priority be to remove microplastics from sludge, or to improve wastewater filters?

"I hope my results promote innovation in technologies and environmental policy, to address next steps and where to act."

CHOOSE YOUR WAY FORWARD

PROFESSIONAL QUALIFICATION OR INDEPENDENT RESEARCH? ON-CAMPUS TEACHING OR ONLINE PART TIME STUDY? DISCOVER FLEXIBLE STUDY OPTIONS TO SUIT YOUR SITUATION, AND PATHWAYS TO MATCH YOUR PASSION.

Taught degrees

Whether you study full or part time, you can expect a lot from a taught degree. There's usually a combination of formal teaching, tutorials and seminars, along with individual study, projects and written exams. You can study on campus – or anywhere, if you choose a distance learning programme.

A Master's course (MA, MBA, MPA, MSc, LLM) will often call for a dissertation. Excellent teaching is integral to our taught programmes, but independent study and research will be at the heart of your achievements.

Some Master's programmes are divided into two or three separate awards. In those cases, you can build up to a Master's by taking a Postgraduate Certificate (PgCert) or Diploma (PgDip) – or simply enjoy the benefits of completing those courses in their own right.

'My course is so flexible, I can fit in a part-time job and volunteer with a charity - the University helped me to find both those opportunities.'

Alice Morgan-Clare,
MRes Science

Build up to a Master's by taking these steps.

Step 1

Postgraduate Certificate
(60 Master's level credit)



Step 2

Postgraduate Diploma
(60 Master's level credits)



Step 3

Master's top-up- research methods unit followed by a dissertation or research project
(60 Master's level credits)



Congratulations

you've achieved a Master's in stages

Research degrees

A truly personal quest for knowledge and insight, research degrees are based purely around pursuing your own interests. With a diverse community of academics, we can support research into a wide range of subjects. Every member of our academic staff cares deeply about helping you achieve your goals.

So what kind of research degree could you do?
Your choices depend on your area and experience:

Doctor of Philosophy (PhD) is a globally recognised postgraduate degree involving extensive and original research into a specific chosen field, typically over 3 years full time or 6 years part time. As well as writing a thesis, you'll need to complete a 'viva voce' (oral defence) of your research.

PhD by Publication is based on research you've already carried out and usually consists of several peer-reviewed publications, plus a substantial commentary on your work as a whole. In addition to your written commentary, you'll need to complete a 'viva voce' (oral defence) of your research.

Professional Doctorate is for advanced upskilling and career building, and is globally recognised proof that you've reached the highest level of professional and academic achievement in your field. As well as writing a thesis, you'll need to complete a 'viva voce' (oral defence) of your research.

Doctor of Medicine (MD) is for qualified medical professionals who want to gain a research degree. From lab-based to qualitative research methods, you'll draw on your clinical expertise.

Master of Philosophy (MPhil) requires extensive research and provides similar skills to a PhD, but you won't need to deliver the same level of original contribution or length of thesis.

Master of Research (MRes) provides a structured entry into research if you've got a UK undergraduate degree or equivalent, and is great preparation for a PhD or research-focused career.

Degree apprenticeships

Give your employer more and expand your capabilities with funded, flexible study built around your career. We're pioneers of Master's level 7 apprenticeships, starting with Engineering, as well as Strategic Leadership in business, education or public administration.

Applicants must be:

- normally living in the UK (not CI - Channel Islands or IoM - Isle of Man) or EEA- European Economic Area for three years prior to the start of the course and not solely for study
- have right to work in the UK
- spend 50% of their employment in England

Eligibility for funding will be determined as part of the admissions process.



'My supervisor's support has been vital. Development sessions by the Graduate School have also helped me become more independent.'

Katherine Alington,
MD in Pharmacy and
Biomedical Sciences



YOUR NEXT CHAPTER STARTS HERE

POSTGRADUATE STUDY IS A PRETTY EXTRAORDINARY THING TO BE ABLE TO DO. WE THINK EMPLOYERS SHOULD BE ABLE TO SEE EXACTLY HOW AMAZING YOU ARE - AND HOW YOU CAN MAKE A DIFFERENCE FOR THEM. SO AS WELL AS OFFERING YOU AN EXCELLENT STUDENT EXPERIENCE, WE'LL HELP YOU GET READY FOR YOUR PROFESSIONAL LIFE TOO. AFTER ALL, WE'RE EVERY BIT AS AMBITIOUS AS YOU ARE.

Considering a taught postgraduate degree?

From gaining experience to exploring job opportunities, you'll enjoy one-to-one advice and guidance from your personal tutor, plus vital support from your faculty careers adviser.

Planning to focus on your own research?

The Graduate School Development Programme offers flexible face-to-face and e-learning options, helping you develop crucial skills for research and career development.

'My work based projects have included a reduction in training times, an analysis of safety incidents and a study into maintenance regimes - all with tangible benefits for my employer.'

Duncan McClement
Commander, Royal Navy
MSc Engineering
Management (via
Learning at Work)

Give me real expertise in building my career

You're heading towards a highly competitive global job market. It really pays to be prepared. That's where our **Careers and Employability Service** comes in. A friendly, expert team offers:

- Advice on planning your career and understanding your future options (you can take advantage of this for up to five years after you leave)
- A range of local volunteering opportunities, to add value to your CV
- Recruitment specialists with strong links to local employers and opportunities
- Employer events and an annual recruitment fair
- An online jobs board for part-time, graduate and volunteering opportunities.

a place where I can turn my ideas into action

From free co-working space to drop-in clinics, business incubation and start-up programmes, our **nest team** is here to help you own your future. For up to five years after you graduate, they can help you to:

- Develop the next big thing
- Commercialise your research
- Help others through business
- Be self-employed successfully
- Learn to think like an entrepreneur

Discover more at
port.ac.uk/careers



HERE WHEN YOU NEED US

STUDYING FOR YOUR POSTGRADUATE DEGREE WILL BE A UNIQUE TIME IN YOUR LIFE. WE OFFER A WIDE RANGE OF ADVICE, GUIDANCE, SERVICES AND SPACES TO HELP YOU MAKE THE MOST OF IT.

Give me everything I need, at my fingertips

MyPort is your online resource for information about the University, the city and your lifestyle. Easy to search, it's a gateway to services including:

- **Academic Skills Unit (ASK)** providing resources, skills sessions and tutorials to develop expertise, abilities and practices that enable you to get the best from your studies
- **Additional Support and Disability Advice Centre (ASDAC)** if you have a disability or condition which may affect your ability to access the campus, curriculum, teaching, learning, assessment or University services, contact ASDAC for confidential advice and guidance
- **Chaplaincy** a peaceful place for reflection and prayer, including dedicated Islamic prayer facilities. Whatever your faith, pop in for tea and spiritual, ethical or emotional support
- **Childcare** if you have a child aged six months to five years, get in touch soon to ask about a place at our on-site nursery
- **Maths Café** daily drop-in sessions, skills workshops and a range of online resources. Get free advice and assistance to develop your maths skills in a friendly, informal environment
- **Sports Facilities** a 120+ station gym, 50+ different fitness classes weekly, 2 indoor sports halls, squash courts, dance studios, all weather outdoor surfaces - our facilities are excellent
- **Student Housing** even before you register, our expert team is ready to help you find accommodation that's right for you - from halls of residence, to private rentals or lodgings
- **Students' Union** home of student-led support, representation, facilities, services, entertainment and activities - including more than 150 societies and sports clubs to join
- **Student Wellbeing Service** support for your emotional and mental health - from face-to-face counselling and courses, to online resources including the anonymous What'sUp app

a perfect space to spark my ideas

Spacious, comfy and well-equipped, the **University Library** is designed for the pursuit of learning. It's open 24/7 during term time and you can access round-the-clock online chat and phone support. It boasts over 385,000 books, access to around half a million ebooks, more than 850 computers and loanable laptops, and a full wireless network. As a postgraduate, you'll enjoy exclusive access to individual silent study rooms, a social learning space and extensive potential for interlibrary loans.

the skills I need to succeed

If you're a research degree student, our dedicated **Graduate School** offers you valuable information at every step of the way. Crucially, you'll have access to the Graduate School Development Programme. This offers more than 150 very popular workshops on a wide variety of topics - from research design, to doctoral process, to career development and a whole lot more.

help to settle, study and thrive in a new country

Whether you're joining us from another country or you're a UK student keen to study abroad, **University of Portsmouth Global (UoP Global)** is your first port of call. The UoP Global team can help with all kinds of things - from immigration advice and orientation, to exchanges with one of our overseas partner universities. They also organise a mix of events and experiences, including two-week cultural summer schools to India, China and Malaysia/Vietnam. With 4,000 international and EU students from over 150 different countries, our community is cosmopolitan. Wherever you're from and wherever you want your studies to take you, you can look forward to a warm welcome.

Explore more at
myport.ac.uk

SECURING YOUR PLACE

WHEN IT'S TIME TO APPLY, YOU SHOULD KNOW WE BELIEVE HIGHER EDUCATION IS FOR EVERYONE. WE VALUE THE EXPERIENCES, IDEAS AND PERSPECTIVES THAT MAKE YOU UNIQUE. SO WE'LL CONSIDER YOUR APPLICATION ON ITS MERITS - WHATEVER YOUR ACADEMIC OR PROFESSIONAL BACKGROUND.

There's more than one route into postgraduate study. So please do check the entry requirements for your chosen path. But know that qualifications, grades and subjects studied aren't the only things that matter to us. If your background is different, we still want to hear from you.

'Portsmouth has given me excellent value for money. It's an extremely supportive University - and with the help of a tutor who's an expert in the field, I've learned to challenge the boundaries and come up with interesting results.'

Aleksandra Gutkowska,
MA Graphic Design



Postgraduate taught: MA, MBA, MSc, LLM, MRes, MPA, PGCE

Need to have: A good first degree from an internationally recognised university. See course listings online or on pages **32 - 69** for minimum classifications and any acceptable equivalents.

Need to do: If applying for an MRes you'll need to submit a brief proposal outlining your initial ideas for a research thesis.

Questions? Ask admissions@port.ac.uk.

Postgraduate research: PhD, MPhil, MD, Professional Doctorate

Need to have: A good first degree or Master's from an internationally recognised university. See listings online or on pages **70 - 73** for minimum classifications and any acceptable equivalents. For a Professional Doctorate, your work environment must be able to support your professional research and development project.

Need to do: Submit an enquiry via the subject area pages on port.ac.uk, identifying the problem you want to study and the aim of your intended research. If applying for a pre-approved self-funded/funded project, don't forget to add the project code to your application form.

Questions? Ask researchadmissions@port.ac.uk.

How to apply



Online: Create an account so you can save, complete and submit your application in your own time. You can find your course, and access the online application form and comprehensive guidance notes for all postgraduate pathways, via port.ac.uk/postgraduate

By post: If you'd prefer to apply on paper, you can ask us to send you a preprinted application form. To request one, either call +44 (0)23 9284 3288 or email admissions@port.ac.uk.

EU and international students

We'd love you to join our diverse student community. Many of our postgraduate degrees are accessible to students from outside the UK. The course web page will tell you if that is not the case.

It's a good idea to check these sites for more information:

- Tier 4 (General) Student Visa (if required) search 'student visas' at port.ac.uk
- English language qualifications we recognise port.ac.uk/international/englishlanguage
- International and EU qualifications we accept port.ac.uk/international/inyourregion

Questions? Ask international.admissions@port.ac.uk.

Want to know more?
Go to port.ac.uk/postgraduate



FUNDING YOUR STUDIES

Fees and funding

You're investing in a better future, by choosing a path that leads to new horizons. We want to help you do it wisely. So here are the key facts and all your options.

Paying tuition fees

Fees vary considerably by course. But your choices for paying them are the same:

- In full during registration (you'll benefit from a two per cent discount)
- In instalments by direct debit, over the first six months of your course (which will begin in either September or October)

Master's funding

You have various options: an official student loan and/or a scholarship or bursary, or alternative funding.

Postgraduate Master's Loans

These loans are paid directly to you - for tuition fees, living costs and other course costs on both taught and MRes or MPhil courses. Borrow as much as you need, up to £10,609* per course.

Am I eligible? You must be a UK or EU national, or have settled status in the UK, and aged under 60 at the start of your course. These loans are not based on your family's income, so there's no means testing.

How can I apply? If your course is eligible (most are, but the course web page will say if yours isn't) simply search and apply online. English or EU nationals apply through **Student Finance England**. Welsh nationals go to **Student Finance Wales**. Scottish nationals use **Student Awards Agency Scotland**. Northern Ireland nationals use **Student Finance NI**.

When do I repay? After finishing your course, you'll start to repay your loan at 6 per cent of any annual income over £21,000. You will repay this alongside any undergraduate loans you have.

*This is the loan rate for 2018/19 and may change for 2019 entry.

20%

DISCOUNT FOR
PORTSMOUTH ALUMNI
UNIVERSITY OF PORTSMOUTH

£3,000

TOWARDS YOUR FEES WITH
OUR MASTER'S SCHOLARSHIPS
UNIVERSITY OF PORTSMOUTH

Scholarships and bursaries for Master's courses

You can use scholarships and bursaries to fund some or all of your course fees.

Am I eligible?

- If you are a UK/EU student looking to study an MA, MSc, MRes, MPA or LLM you could get £3,000 towards your fees with our Master's scholarship for academic excellence
- Faculty of Business and Law scholarship offers a 40 per cent discount on some courses
- University of Portsmouth alumni may qualify for a 20 per cent discount
- The NHS Business Services Authority may offer you a bursary for an MSc in Social Work

How can I apply? Discover more on the Fees and Funding pages at port.ac.uk/pgtfeesandfunding

When do I repay? Unlike a loan, you don't need to repay a scholarship or bursary.

FUNDING YOUR STUDIES

Research degree and PhD funding

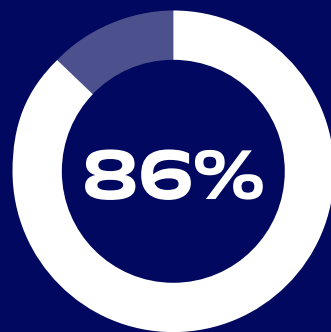
We attract funding for postgraduate research degrees from a range of sources. Visit port.ac.uk/pgfeesandfunding for more details and useful links. Here are some examples:

- Postgraduate Doctoral Loans - non-means-tested loans of up to £25,000* for tuition fees, living costs and other course costs, to be repaid in the same way as a Master's loan
- Fully Funded PhD Bursaries - for 2018 we offered 25 fully funded full time PhD studentships for UK and EU students, spanning all areas of study
- Portsmouth Global PhD scholarships - for 2019 entry we'll offer a limited number of full-fee bursaries for international (non-EU) students, across every area of study
- Alumni - if you have a University of Portsmouth qualification, you may be eligible for up to 20 per cent off your tuition fees
- ESRC South Coast Doctoral Training Partnership - fee and maintenance grant funding for social science research in psychology and area studies subjects
- We can help you identify other sources of funding - from employers and industry, to charities - and write a letter of support for your application

*This is the loan rate for 2018/19 and may change for 2019 entry.

ONE OF THE MOST AFFORDABLE CITIES FOR STUDENTS

NatWest Student Living Survey 2017



POSTGRADUATE RESEARCH STUDENT SATISFACTION

Postgraduate Research Experience Survey (PRES) 2017

Alternative funding for Postgraduate courses

Some organisations, charities and trusts offer grants and bursaries.

Am I eligible? These tend to be awarded based either on academic merit or other specified criteria.

How can I apply? We suggest valuable online and printed resources on the Postgraduate Fees and Funding pages at port.ac.uk/postgraduate - from the Alternative Guide to Postgraduate Funding website, to directories of grants, charities and trusts, these will help you identify sources of funding that may suit you.

When do I repay? Funding like this usually doesn't need to be repaid - but the awarding organisation may ask you to keep them updated on your progress.

Living expenses

Remember to consider more than fees. We estimate the cost of living in Portsmouth for a calendar year is around £9,500. This should cover typical shared student accommodation in the private rental sector, together with food, toiletries, utility bills, books, clothing, and modest travel and leisure activities. Of course, it all depends on your lifestyle.



PGCE funding

Loans

When doing a PGCE you can apply for the same student funding as an undergraduate. This might include a tuition fee loan and a maintenance loan. You'd pay these back on the same terms as any student loans you took for your first degree.

Bursaries

- If you're doing a full time Further Education and Training PGCE, you may qualify for a University of Portsmouth bursary of £750, depending on your income. If you're specialising in English or Maths, you may also secure up to £25,000 from the Department of Education
- If you're training to teach at a secondary school, the Department of Education may award a bursary of up to £26,000 for the following courses: Computer Science, English, Geography, Mathematics, Modern Foreign Languages, Science

Discover more on the Fees and Funding pages at port.ac.uk/postgraduate

COME AND SAY HELLO

THERE'S A GREAT WAY TO FIND OUT WHAT IT'S LIKE TO STUDY AT A GOLD RATED UNIVERSITY. PAY US A VISIT.

YOU CAN GET TO KNOW US BETTER AT A RANGE OF EVENTS - ON CAMPUS, ONLINE AND ON THE ROAD. WHATEVER WORKS BEST, WE LOOK FORWARD TO MEETING YOU.



On campus

Get closer to postgrad opportunities at our relaxed events.

Discover Postgrad Study sessions are a chance to find out if further study is for you. There are general talks and a student panel.

- Wednesday 28 November 2018, 4-6pm
- Wednesday 22 May 2019, 4-6pm

Postgraduate and Part-time Open Evenings offer direct access to academic staff, students and course facilities, for an in-depth experience.

- Wednesday 6 February 2019, 4-7pm
- Wednesday 27 March 2019, 4-7pm

On tour

If you can't make it to Portsmouth, we might be at a postgraduate fair in a place that suits you. Our team will be happy to answer your questions about courses and more. View the postgraduate fairs we're visiting at port.ac.uk/on-tour

Online

Our interactive Postgrad Live events are a great source of valuable information - from what postgraduate study is like, to funding options, help with your application, and how a postgrad qualification could boost your career. Find them all at port.ac.uk/postgradlive

Watch films, view photos and read more about what Portsmouth life and study is like at port.ac.uk/why-portsmouth

Visit us in 2018/19

Book your place at
port.ac.uk/visit-postgrad



Busy building a career
and keen to build it faster

GIVE ME FLEXIBLE POSTGRAD STUDY THAT FITS AROUND WORK

OUR **LEARNING AT WORK** PROGRAMMES GIVE YOU THE FREEDOM TO GAIN A POSTGRADUATE DEGREE WITHOUT LEAVING YOUR JOB.

Our range of flexible, work-based courses allow you to tailor your programme of study with your real projects. You can set your own objectives, and shape your Master's to your personal learning requirements and professional development needs.

You'll have the option to study online units from home or work. If you want, you can also choose to attend some lectures on campus - but that's not essential. Start in September or January and work at your own pace.

There are no standardised entry requirements and you could gain credit for your learning and experience to date.

Master's level courses

- MA Business Management
- MA Business and Computer Studies
- MSc Applied Computing
- MSc Applied Science
- MSc Engineering
- MSc Engineering and Management
- MSc Engineering Project Management
- MSc Maritime Studies
- MSc Occupational Health and Safety Management (we also offer a one year Postgraduate Certificate/PgCert in this subject)
- MSc Occupational Health, Safety and Environmental Management

MA/MSC PROFESSIONAL STUDIES

If none of the specialisms listed are right for you, you could choose an MA or MSc in Professional Studies. A Professional Studies qualification is especially relevant if you work in a multi-faceted role. It allows you to build evidence of key transferable skills that may not focus on subject-specific qualifications.

PROFESSIONAL RECOGNITION

Your Learning at Work programme could lead to professional recognition in your field. For example, our Occupational Health and Safety courses are accredited by the Institution of Occupational Safety and Health (IOSH) and the Institute of Environmental Management and Assessment (IEMA). And all our MSc engineering courses are recognised by professional engineering institutions. This recognition could lead to you being granted Chartered (CEng) or Incorporated (IEng) engineer status.



To discover more,
visit [port.ac.uk/
learningatwork](http://port.ac.uk/learningatwork)





BROWSE OUR TAUGHT COURSES BY CATEGORY

ACCOUNTING, ECONOMICS AND FINANCE

- Key to course listings**
- Faculty of Creative and Cultural Industries
 - Faculty of Technology
 - Faculty of Business and Law
 - Faculty of Humanities and Social Sciences
 - Faculty of Science
- DL** Distance learning
FT Full time courses
PT Part time courses
DA Degree apprenticeship
J January start
F February start
S September start
... Course subject to approval

MSc Accounting and Finance

S
FT
PT

Accredited by

Association of Chartered Certified Accountants/Chartered Institute of Management Accountants

Duration

1 year full time,
30 months part time

Entry requirements

A second-class honours degree in a relevant subject or equivalent qualification and/or equivalent professional experience.

UK/EU/Channel Islands Fees

Full time: £10,200
Part time: £3,400 (pro-rata)

International Fees

Full time: £14,700
Part time: £4,900 (pro-rata)

MSc Corporate Finance

S
FT

Duration

1 year full time

Entry requirements

A second-class honours degree in a relevant subject which includes some element of economics, mathematics or statistics, or equivalent professional experience and/or qualifications.

UK/EU/Channel Islands Fees

Full time: £10,200

International Fees

Full time: £14,700

MSc Economics, Finance and Banking

S
FT
PT

Accredited by

Association of Corporate Treasurers

Duration

1 year full time,
2 years part time

Entry requirements

A second-class honours degree in a relevant subject which includes some element of economics, mathematics or statistics, or equivalent professional experience and/or qualifications.

UK/EU/Channel Islands Fees

Full time: £10,200
Part time: £3,400 (year 1), £6,800 (year 2)

International Fees

Full time: £14,700
Part time: £4,900 (year 1), £9,800 (year 2)

MSc Finance

S
FT

Accredited by

Association of Corporate Treasurers

Duration

1 year full time

Entry requirements

A second-class honours degree in a relevant subject which includes some element of economics, mathematics or statistics, or equivalent professional experience and/or qualifications.

UK/EU/Channel Islands Fees

Full time: £10,200

International Fees

Full time: £14,700

MSc Forensic Accounting

J
S
FT
PT
DL

Duration

1 year full time (September),
30 months part time (September),
or 2 years part time distance learning
(September), 30 months part time
distance learning (January/September)

Entry requirements

A second-class honours degree in a relevant subject or equivalent qualification and/or equivalent professional experience.

UK/EU/Channel Islands Fees

Full time: £10,200
Part time: £3,400 (pro-rata)
Distance learning: 2 years part time
£4,350 (pro-rata)
30 months part time £2,900 (pro-rata)

International Fees

Full time: £14,700
Part time: £4,900 (pro-rata)
Distance learning: 2 years part time
£2,900 (pro-rata)
30 months part time £2,900 (pro-rata)

MSc International Finance and Banking

S
FT

Duration

1 year full time

Entry requirements

A second-class honours degree in a relevant subject which includes some element of economics, mathematics or statistics, or equivalent professional experience and/or qualifications.

UK/EU/Channel Islands Fees

Full time: £10,200

International Fees

Full time: £14,700

MArch
Architecture

S
FT
PT

Accredited by

Architects Registration Board/Royal Institute of British Architects (RIBA)

Duration

2 years full time,
4 years part time

Entry requirements

A good honours degree or above with RIBA part 1 exemption. If you have appropriate qualifications and design skills, you may be accepted directly. We may require you to submit a portfolio online as part of our selection process. Ideally, you'll have some experience working within an architecture practice.

UK/EU/Channel Islands Fees

Full time: £9,250
Part time: £3,080 (pro-rata)
International Fees
Full time: £13,900
Part time: £6,950 (pro-rata)

MArch
Architecture and Professional Practice (Degree Apprenticeship)

S

Accredited by

Architects Registration Board/Royal Institute of British Architects (RIBA)

Duration

4 years part time

Entry requirements

A second-class honours degree or equivalent, or sufficient evidence of both relevant work experience and academic potential to achieve the award.

UK/EU/Channel Islands Fees

Full time: £9,250
Part time: £3,080 (pro-rata)
International Fees
Full time: £13,900
Part time: £6,950 (pro-rata)

Final Examination in Professional Practice (Part 3) Architecture

J
PT

Accredited by

Architects Registration Board/Royal Institute of British Architects (RIBA)

Duration

1 year part time

Entry requirements

Professional status in surveying, architecture or civil engineering from a UK institution. RIBA part 1 and 2 are essential for entry. A case study project is required.

UK/EU/Channel Islands Fees

Part time: £2,320 (UK students only)

MSc
Historic Building Conservation

S
FT
PT

Accredited by

Architects Registration Board/Royal Institute of British Architects (RIBA)

Duration

1 year full time,
2 years part time

Entry requirements

A good honours degree in a relevant subject such as Architecture, Civil Engineering, Building and Surveying, or equivalent professional experience and/or qualifications.

UK/EU/Channel Islands Fees

Full time: £7,500
Part time: £2,500 (year 1), £5,000 (year 2)
International Fees
Full time: £13,900
Part time: £4,630 (year 1), £9,270 (year 2)

MA
Interior Design

S
FT
PT

Duration

1 year full time,
2 years part time

Entry requirements

A good honours degree in a relevant subject, or equivalent professional experience and/or qualifications. We may require you to submit a portfolio online as part of our selection process.

UK/EU/Channel Islands Fees

Full time: £7,500
Part time: £2,500 (year 1), £5,000 (year 2)
International Fees
Full time: £13,900
Part time: £4,630 (year 1), £9,270 (year 2)

International
Professional Practice (Part 3) Architecture

S
PT

Duration

1 year part time

Entry requirements

Professional status in surveying, architecture or civil engineering. International equivalent of RIBA part 1 and 2 are essential for entry. A case study project is required.

International Fees

Part time: £2,320 (International students only)

MA
Professional Design Practice

S
FT
PT

Duration

1 year full time,
2 years part time

Entry requirements

A good honours degree in a relevant subject, or equivalent professional experience and/or qualifications. A portfolio of professional work may be required.

UK/EU/Channel Islands Fees

Full time: £7,500
Part time: £3,750 (pro-rata)
International Fees
Full time: £13,900
Part time: £6,950 (pro-rata)

MA
Sustainable Cities

S
FT
PT

Duration

1 year full time,
2 years part time

Entry requirements

A good honours degree in a relevant subject, or equivalent professional experience and/or qualifications. You'll be required to submit a portfolio online as part of the selection process.

UK/EU/Channel Islands Fees

Full time: £7,500
Part time: £2,500 (year 1), £5,000 (year 2)
International Fees
Full time: £13,900
Part time: £4,630 (year 1), £9,270 (year 2)

MSc
Building Information Management

J
S
FT
PT
DL

Duration

1 year full time,
2 years part time distance learning

Entry requirements

A good honours degree or equivalent academic qualification in a technical or analytical discipline. Exceptionally, applicants from non-technical/analytical disciplines but with proven experience in the architecture, engineering, and construction fields will be considered.

UK/EU/Channel Islands Fees

Full time: £8,700
Distance learning: 2 years part time £2,250 (pro-rata)
International Fees:
Full time: £15,900
Distance learning: 2 years part time £2,250 (pro-rata)

PgCert
Building Information Management

J
S
PT
DL

Duration

1 year part time distance learning

Entry requirements

A good honours degree or equivalent academic qualification in a technical or analytical discipline. Exceptionally, applicants from non-technical/analytical disciplines but with proven experience in the architecture, engineering, and construction fields will be considered.

UK/EU/Channel Islands Fees

Part time: £2,900
International Fees
Part time: £5,300

MSc
Quantity Surveying

S
FT
PT

Accredited by

Royal Institution of Chartered Surveyors (RICS)

Duration

1 year full time,
2 years part time

Entry requirements

A good honours degree or equivalent academic qualification in a technical or analytical discipline. Exceptionally, applicants from non-technical/analytical disciplines but with proven experience in the property or construction fields will be considered.

UK/EU/Channel Islands Fees

Full time: £7,500
Part time: £3,750 (pro-rata)
International Fees
Full time: £15,900
Part time: £7,950 (pro-rata)

MSc
Real Estate Management

S
FT
PT

Accredited by

Royal Institution of Chartered Surveyors (RICS)

Duration

1 year full time,
2 years part time

Entry requirements

A good honours degree or equivalent in any discipline. If you can demonstrate commitment to, enthusiasm for or experience in the field, together with a good standard of literacy, you will be considered.

UK/EU/Channel Islands Fees

Full time: £7,500
Part time: £3,750 (pro-rata)
International Fees
Full time: £15,900
Part time: £7,950 (pro-rata)

- Key to course listings
- Faculty of Creative and Cultural Industries
 - Faculty of Technology
 - Faculty of Business and Law
 - Faculty of Humanities and Social Sciences
 - Faculty of Science
- DL

Distance learning
- FT

Full time courses
- PT

Part time courses
- Degree apprenticeship
- J

January start
- F

February start
- S

September start
- ...

Course subject to approval

MSc Applied Aquatic Biology

S FT PT

Duration
1 year full time,
2 years part time

Entry requirements

A 2:1 honours degree or equivalent in a relevant subject. We may take professional experience and other qualifications into consideration if you don't meet this requirement.

UK/EU/Channel Islands Fees

Full time: £8,700
Part time: £4,350 (pro-rata)
International Fees
Full time: £15,900
Part time: £7,950 (pro-rata)

MSc Biotechnology

S FT PT

Duration
1 year full time,
2 years part time

Entry requirements

A 2:1 honours degree or equivalent in a relevant subject. We may take professional experience and other qualifications into consideration if you don't meet this requirement.

UK/EU/Channel Islands Fees

Full time: £10,200
Part time: £5,100 (pro-rata)
International Fees
Full time: £15,900
Part time: £7,950 (pro-rata)

MSc Medical Biotechnology

S FT PT

Duration
1 year full time,
2 years part time

Entry requirements

A 2:1 honours degree or equivalent in a relevant subject. If you don't meet this requirement, we may consider professional experience and other qualifications.

UK/EU/Channel Islands Fees

Full time: £10,200
Part time: £5,100 (pro-rata)
International Fees
Full time: £15,900
Part time: £7,950 (pro-rata)

MSc Business and Management

S FT

Duration
1 year full time

Entry requirements

A second-class honours degree or equivalent professional experience and/or qualifications.

UK/EU/Channel Islands Fees

Full time: £10,200
International Fees
Full time: £14,700

MSc Coaching and Development

J S PT

Duration
1 year part time

Entry requirements

An honours degree in a relevant subject, or substantial professional experience and/or qualifications in coaching or another related field.

UK/EU/Channel Islands Fees

Part time: £3,400
International Fees
Part time: £4,900

PgCert Coaching and Development

J S PT

Duration
1 year part time

Entry requirements

An honours degree in a relevant subject, or substantial professional experience and/or qualifications in coaching or another related field.

Fees

Please contact the Faculty of Business and Law

PgDip Coaching and Development

J S PT

Duration
1 year part time

Entry requirements

An honours degree in a relevant subject, or substantial professional experience and/or qualifications in coaching or another related field.

Fees

Please contact the Faculty of Business and Law

PgCert Coaching and Development (Dubai)

J S PT

Duration
1 year part time

Entry requirements

An honours degree in a relevant subject, or substantial professional experience and/or qualifications in coaching or another related field.

Fees

Please contact the Faculty of Business and Law

PgDip Coaching and Development (Dubai)

J S PT

Duration
1 year part time

Entry requirements

An honours degree in a relevant subject, or substantial professional experience and/or qualifications in coaching or another related field.

Fees

Please contact the Faculty of Business and Law

MA Digital Marketing

S FT PT

Duration
1 year full time,
30 months part time

Entry requirements

A second-class honours degree or equivalent professional experience and/or qualifications.

UK/EU/Channel Islands Fees

Full time: £8,700
Part time: £2,900 (pro-rata)
International Fees
Full time: £14,700
Part time: £4,900 (pro-rata)

MBA Global

J S FT PT ...

Duration
1 year full time (September),
16 months full time (January),
2 years part time

Entry requirements

A second-class honours degree (or equivalent, including professional qualifications) in a business related subject, plus at least two years work experience. Alternatively, applicants without formal qualifications, but with a minimum of three years of management experience, are welcome to apply. Applicants may be subject to interview and/or be asked to submit a portfolio in support of their application.

UK/EU/Channel Islands Fees

January start: £16,500
International Fees
September start: £16,900

PgDip Human Resource Development and Training Management

S FT

Accredited by

Chartered Institute of Personnel and Development (CIPD)

Duration

2-4 years part time

Entry requirements

An honours degree or equivalent in any academic subject and an appreciation of the Human Resource Development (HRD)/training management function. If you have appropriate work experience and a Chartered Institute of Personnel and Development (CIPD) Level 3 or 5 qualification instead, we will consider your application. Professional experience and/or equivalent qualification may also be considered. You may be required to interview.

UK/EU/Channel Islands Fees

Full fee: £5,800
Part time: £1,450 (pro-rata)
International Fees
Full fee: £9,800
Part time: £2,450 (pro-rata)

MSc
Human Resource
Development
(Top-up)

S
FT
PT

Duration
6 months full time,
1 year part time (top-up)

Entry requirements
Chartered Institute of Personnel and Development (CIPD) Advanced Level 7 Qualification- either through the completion of a Postgraduate Diploma (PgDip) in Human Resource Management/Personnel Management or the Level 7 qualification at a CIPD accredited centre. If you are a Chartered Fellow or Chartered Member of the CIPD and gained a PgDip more than 5 years previously, you may be eligible to apply through a specific Recognition of Prior Learning (RPL) route.

UK/EU/Channel Islands Fees
Full time: £3,400
Part time: £3,400 (pro-rata)
International Fees
Full time: £4,900
Part time: £4,900 (pro-rata)

MSc
Human Resource
Management

S
FT
PT

Accredited by
Chartered Institute of Personnel and Development (CIPD)

Duration
1 year full time

Entry requirements
A second class honours degree or equivalent in any academic subject, with the intention to pursue or continue an HR career. If you have CIPD Level 3 or Level 5 and/or appropriate work experience, you will also be considered. Applicants are subject to interview.

UK/EU/Channel Islands Fees
Full time: £10,200
International Fees
Full time: £14,700

PgDip
Human Resource
Management

S
PT

Accredited by
Chartered Institute of Personnel and Development (CIPD)

Duration
2 years part time

Entry requirements
A second class honours degree or equivalent in any academic subject, with the intention to pursue or continue an HR career. If you have CIPD Level 3 or Level 5 and appropriate work experience, you will also be considered. You may be required to interview.

UK/EU/Channel Islands Fees
Part time: £3,400 (pro-rata)
International Fees
Part time: £4,900 (pro-rata)

MSc
Human Resource
Management
(Top-up)

S
FT
PT

Duration
6 months full time,
1 year part time

Entry requirements
Chartered Institute of Personnel and Development (CIPD) Advanced Level 7 Qualification- either through the completion of a Postgraduate Diploma (PgDip) in Human Resource Management/Personnel Management or the Level 7 qualification at a CIPD accredited centre. If you are a Chartered Fellow or Chartered Member of the CIPD and gained a PgDip more than 5 years previously, you may be eligible to apply through a specific Recognition of Prior Learning (RPL) route.

UK/EU/Channel Islands Fees
Full time: £3,400
Part time: £3,400 (pro-rata)
International Fees
Full time: £4,900
Part time: £4,900 (pro-rata)

MSc
Innovation
Management and
Entrepreneurship

S
FT
PT

Duration
1 year full time,
2 years part time

Entry requirements
A second-class honours degree or equivalent in a relevant subject, or equivalent professional experience and /or qualifications.

UK/EU/Channel Islands Fees
Full time: £7,700
Part time: £4,350 (pro-rata)
International Fees
Full time: £14,700
Part time: £7,350 (pro-rata)

MSc
International
Business and
Management

J
FT

Duration
14 months full time

Entry requirements
A second-class honours degree or equivalent professional experience and /or qualifications.

UK/EU/Channel Islands Fees
Full time: £10,200
International Fees
Full time: £14,700

MSc
International
Human Resource
Management

S
FT
PT

Accredited by
Chartered Institute of Personnel and Development (CIPD)

Duration
1 year full time

Entry requirements
A second class honours degree or equivalent in any academic subject, with the intention to pursue or continue an HR career. If you have CIPD Level 3 or Level 5 and appropriate work experience, you will also be considered.

UK/EU/Channel Islands Fees
Full time: £10,200
International Fees
Full time: £14,700

MSc
Leadership and
Management
(Top-up)

J
FT

Duration
1 year part time

Entry requirements
There are three recognised routes of entry. You may have been awarded the CMI Level 7 Diploma in Strategic Leadership & Management within the last 5 years. Alternatively, you can offer a Recognised Prior Learning (RPL) portfolio, demonstrating your suitability. If you are a military applicant, you can apply on the basis of RPL via either your rank or the award of ICSC, plus proven work experience at a leadership level.

UK/EU/Channel Islands Fees
Part time: £3,900
International Fees
Part time: £4,670

MSc
Logistics and
Supply Chain
Management

J
S
FT
PT

Accredited by
Chartered Institute of Logistics and Transport

Duration
1 year full time (September),
17 months full time (January)

Entry requirements
A second-class honours degree in a relevant subject, or equivalent professional experience and/or qualifications.

UK/EU/Channel Islands Fees
Full time: £7,500
International Fees
Full time: £15,900

MA
Marketing

S
FT
PT

Accredited by
Chartered Institute of Marketing (CIM)

Duration
1 year full time,
30 months part time

Entry requirements
A second-class honours degree, or equivalent professional experience and/or qualifications, such as the CIM Diploma in Marketing.

UK/EU/Channel Islands Fees
Full time: £8,700
Part time: £2,900 (pro-rata)
International Fees
Full time: £14,700
Part time: £4,900 (pro-rata)

MBA
Strategic
Leadership

S
PT

Duration
2 years part time

Entry requirements
A second class honours degree (or equivalent, including professional qualifications) plus at least 3 years of work experience at a professional or managerial level. Alternatively, if you don't have formal qualifications but do have at least 5 years of management experience, you are welcome to apply. You may be invited to interview and/or submit a portfolio in support of your application.

UK/EU/Channel Islands Fees
Part time: £5,625
International Fees
Part time: £7,000

MBA
Strategic
Leadership
(Degree
Apprenticeship)

S
PT

Accredited by
Chartered Management Institute (CMI)

Duration
2 years part time (day release)

Entry requirements
Any second-class honours degree (or equivalent, including professional qualifications) plus at least 3 years of work experience at a professional or managerial level. Alternatively, if you don't have formal qualifications but do have at least 5 years of management experience, you are welcome to apply. You may be invited to interview and /or submit a portfolio in support of your application.

UK/EU/Channel Islands Fees
Part time: £9,000 (pro-rata)
International Fees
Please contact the Faculty of Business and Law

- Key to course listings**
- Faculty of Creative and Cultural Industries
 - Faculty of Technology
 - Faculty of Business and Law
 - Faculty of Humanities and Social Sciences
 - Faculty of Science
- DL** Distance learning
- FT** Full time courses
- PT** Part time courses
- Degree apprenticeship
- J** January start
- F** February start
- S** September start
- Course subject to approval



'I love the focus on current issues, the lecturers' passion and the aim of developing our skills either for postgrad research or the job market.'

Sorina Toltica,
PhD with Economic and Social Research Council (ESRC) South Coast Doctoral Training Partnership (DTP)

BUSINESS, MANAGEMENT AND MARKETING

- Key to course listings**
 - Faculty of Creative and Cultural Industries
 - Faculty of Technology
 - Faculty of Business and Law
 - Faculty of Humanities and Social Sciences
 - Faculty of Science
- DL** Distance learning
 - FT** Full time courses
 - PT** Part time courses
 - Degree apprenticeship
 - J** January start
 - F** February start
 - S** September start
 - Course subject to approval

MSc Project Management

J
S
FT
PT

Accredited by
Association for Project Management (APM)

Duration
1 year full time,
2 years part time

Entry requirements
A second-class honours degree or equivalent, or sufficient evidence of both relevant work experience and academic potential to achieve the award.

UK/EU/Channel Islands Fees
Full time: £7,700
Part time: £4,350 (pro-rata)
International Fees
Full time: £14,700
Part time: £7,350 (pro-rata)

MSc Risk, Crisis and Resilience Management

S
FT
PT

Accredited by
Institute of Risk Management

Duration
1 year full time,
2 years part time

Entry requirements
A second-class honours degree, or equivalent professional experience and/or qualifications.

UK/EU/Channel Islands Fees
Full time: £7,700
Part time: £4,350 (pro-rata)
International Fees
Full time: £14,700
Part time: £7,350 (pro-rata)

MSc Strategic Quality Management

DL
PT

Duration
27 months part time

Entry requirements
A second-class honours degree or equivalent in a relevant subject. If you're a working professional without an honours degree but you do have substantial relevant experience and the academic potential to achieve the award, we will consider your application. All applicants will be required to attend an interview.

UK/EU/Channel Islands Fees
Part time: £2,500 (pro-rata)
International Fees
Part time: £3,750 (pro-rata)

MPA Public Administration

S
FT
PT
DL

Duration
1 year full time,
2 years part time,
1 year full time distance learning*
2 years part time distance learning*

Entry requirements
A good honours degree in a relevant subject, or equivalent professional experience and/or qualifications. Ideally, you'll have experience of working in a managerial role in a public sector organisation.

UK/EU/Channel Islands Fees
Full time: £7,000
Part time: £2,330 (pro-rata)
Distance learning: 1 year full time £4,625
Distance learning: 2 years part time £2,310 (pro-rata)
International Fees
Full time: £13,900
Part time: £4,630 (year 1), £9,270 (year 2)
Distance learning: 1 year full time £4,625
Distance learning: 2 years part time £2,310 (pro-rata)

*Applicants will be subject to interview

MPA Public Administration (Degree Apprenticeship)

J
S
PT
DL

Duration
2 years part time

Entry requirements
A good honours degree in a relevant subject, or equivalent. Exceptionally, we will instead consider a strong profile of relevant professional experience and/or training, with demonstrable academic ability to achieve at postgraduate level.

UK/EU/Channel Islands Fees
Part time: £9,000 (pro-rata)
International Fees
Please contact the Faculty of Humanities and Social Sciences

INSPIRE AND ENTHUSE FUTURE GENERATIONS



Teacher Training

Whether it's 11-16 or further education that interests you, teaching is a rewarding, inspiring and exciting career where no two days are the same.

And there's no better place to become a teacher than here. We've been a respected training provider for decades, and our secondary teacher training is rated 'outstanding' by Ofsted.

You'll get the hands-on experience you need to progress, thanks to our partnerships with schools and colleges across the region. The skills and knowledge you'll learn will also open the door to job opportunities once you graduate.

Postgraduate Certificate of Education (PGCE)

We offer PGCE courses in the following subjects. Each comprises of three interconnected strands – Curriculum Studies, Professional Studies and School Experience – where the skills and knowledge you gain in the taught sessions can be practised and built up through relevant teaching conditions. Whichever route you choose will make a great beginning to your career as a secondary teacher:

Our PGCE Courses (11-16 years)

- PGCE Computer Science
- PGCE English
- PGCE Geography
- PGCE Mathematics
- PGCE Modern Foreign Languages
- PGCE Science (with Biology, Chemistry or Physics)

Further Education and Teacher Training PGCE

This course will give you the skills and confidence to be a successful teacher in the further education (FE) and training sector. This route provides a recognised teaching qualification to work as a teacher in an FE College or wider training sector, predominantly with students aged 16 and above.

We can support all subject areas and level 3 qualifications covered across the sector.

If you're already working in the field, you can choose to study on a part-time basis at one of our partner colleges (Havant and South Downs College, Chichester College, St Vincent College campus, Isle of Wight College and Eastleigh College).

Duration

- 1 year full time
- 2 years part time (Further Education and Training only)*

Fees

- UK/EU/Channel Islands £9,250
- International £13,900

Entry requirements

- A good honours degree in a relevant subject (preferably 2:2 or higher)
- GCSE grade C/4 or above in English Language and Mathematics
- Applicants for whom English is a second language would be expected to possess IELTS 6.5, with no component below 6.0.

You will be required to interview, and subject to statutory safeguarding checks including Enhanced Disclosure and Barring Service (DBS) clearance, and Occupational Health clearance.

You must also pass the government's professional skills tests in literacy and numeracy before starting the course.

*If studying part time, we'll expect you to secure your own teaching placement of at least 50 hours per year, plus an identified subject mentor. If full time, we'll arrange your teaching placement.

**To discover more,
visit port.ac.uk/teach**



'I chose to train as a teacher so I could use my knowledge from my degree. Despite having exciting jobs in the geography field, I never felt fully satisfied. I knew what I wanted most was to help young people succeed!'

Mary-Anne Gaskin
PGCE Secondary
Geography

CHILDHOOD,
YOUTH STUDIES
AND EDUCATION

MA
Education
Studies

S
FT
PT

Duration
1 year full time,
2 years part time

Entry requirements
A good honours degree or equivalent
in a relevant subject. Exceptionally,
equivalent professional experience and
/or qualifications will be considered.

UK/EU/Channel Islands Fees
Full time: £7,500
Part time: £3,750 (pro-rata)
International Fees
Full time: £13,900
Part time: £6,950 (pro-rata)

MSc
Educational
Leadership and
Management

S
FT
PT
DL

Duration
1 year full time,
2 years part time,
2 years part time distance learning

Entry requirements
A good honours degree or equivalent
in a relevant subject. If you cannot
provide evidence of this, we'll ask you to
complete a programme of preparatory
reading and submit a written paper.
This will confirm your ability to study at
postgraduate level.

UK/EU/Channel Islands Fees
Full time: £7,500
Part time: £3,750 (pro-rata)
Distance learning: £3,500 (pro-rata)
International Fees
Full time: £13,900
Part time: £6,950 (pro-rata)
Distance learning: £3,500 (pro-rata)

PgCert
Educational
Leadership and
Management

S
FT
PT
DL

Duration
6 months full time,
2 years part time,
1 year part time distance learning

Entry requirements
A good honours degree or equivalent
in a relevant subject. If you cannot
provide evidence of this, we'll ask you to
complete a programme of preparatory
reading and submit a written paper.
This will confirm your ability to study at
postgraduate level.

UK/EU/Channel Islands Fees
Full time: £2,330
Part time: £2,330 (pro-rata)
Distance learning: £1,540 (pro-rata)
International Fees
Full time: £4,630
Part time: £4,630 (pro-rata)
Distance learning: £1,540 (pro-rata)

PgDip
Educational
Leadership and
Management

S
FT
PT
DL

Duration
1 year full time,
2 years part time,
2 years part time distance learning

Entry requirements
A good honours degree or equivalent
in a relevant subject. If you cannot
provide evidence of this, we'll ask you to
complete a programme of preparatory
reading and submit a written paper.
This will confirm your ability to study at
postgraduate level.

UK/EU/Channel Islands Fees
Full time: £4,670
Part time: £2,330 (pro-rata)
Distance learning: £1,540 (pro-rata)
International Fees
Full time: £9,270
Part time: £4,630 (pro-rata)
Distance learning: £1,540 (pro-rata)

MSc
Educational
Leadership and
Management
(Degree
Apprenticeship)

J
S
PT
DL

Duration
2 years part time

Entry requirements
A good honours degree in a relevant
subject, or equivalent. In exceptional
cases, we will consider a strong profile of
relevant professional experience and/or
training, together with a demonstration
of academic ability to achieve at
postgraduate level.

UK/EU/Channel Islands Fees
International Fees
Please contact the Faculty of Humanities
and Social Science

COMPUTER
GAMES AND
ANIMATION

MSc
Computer
Animation

S
FT
PT

*Important note: Please apply via MSc
Creative Technologies. Computer
Animation is a bespoke project option
within that course. Your final award will
be MSc Computer Animation.*

Duration
1 year full time,
2 years part time

Entry requirements
A good honours degree or equivalent in
a relevant subject. We may require you
to submit a portfolio online as part of our
selection process.

UK/EU/Channel Islands Fees
Full time: £7,500
Part time: £5,000 (year 1), £2,500 (year 2)
International Fees
Full time: £14,700
Part time: £9,800 (year 1), £4,900 (year 2)

MSc
Computer Games
Technology

S
FT
PT

*Important note: Please apply via MSc
Creative Technologies. Computer Games
Technology is a bespoke project option
within that course. Your final award will
be MSc Computer Games Technology.*

Duration
1 year full time,
2 years part time

Entry requirements
A good honours degree or equivalent in
a relevant subject. We may require you
to submit a portfolio online as part of our
selection process.

UK/EU/Channel Islands Fees
Full time: £7,500
Part time: £5,000 (year 1), £2,500 (year 2)
International Fees
Full time: £14,700
Part time: £9,800 (year 1), £4,900 (year 2)

- Key to course listings**
- Faculty of Creative and Cultural Industries
 - Faculty of Technology
 - Faculty of Business and Law
 - Faculty of Humanities and Social Sciences
 - Faculty of Science
- DL** Distance learning
- FT** Full time courses
- PT** Part time courses
- DA** Degree apprenticeship
- J** January start
- F** February start
- S** September start
- ...** Course subject to approval





COMPUTING

- Key to course listings**
- Faculty of Creative and Cultural Industries
 - Faculty of Technology
 - Faculty of Business and Law
 - Faculty of Humanities and Social Sciences
 - Faculty of Science
- DL** Distance learning
FT Full time courses
PT Part time courses
DA Degree apprenticeship
J January start
F February start
S September start
... Course subject to approval

MSc Computer Network Administration and Management

J
S
FT
PT

Accredited by

Institution of Engineering and Technology (IET) - meeting in part the academic requirements for CEng

Duration

1 year full time (September),
3 years part time (September),
16 months full time (January)

Entry requirements

A second-class honours degree in a relevant subject or equivalent professional experience and/or qualifications.

UK/EU/Channel Islands Fees

Full time: £8,700
Part time: £2,900 (pro-rata)

International Fees

Full time: £15,900
Part time: £5,300 (pro-rata)

MSc Data Analytics

S
FT

Duration

1 year full time

Entry requirements

Minimum of a second-class honours degree in a relevant subject or a degree with relevant experience, or equivalent professional experience and/or qualifications.

UK/EU/Channel Islands Fees

Full time: £7,500

International Fees

Full time: £15,900

MSc Forensic Information Technology

S
FT
PT

Accredited by

British Computer Society - fulfilling academic requirements for Chartered IT Professional (CITP), and partially meeting academic requirements for Chartered Engineer (CEng) and Chartered Scientist (CSci)

Duration

1 year full time,
3 years part time

Entry requirements

A second-class honours degree in a relevant subject (including Computer Sciences, Legal or Social Sciences) or equivalent professional experience and/or qualifications.

UK/EU/Channel Islands Fees

Full time: £7,500
Part time: £2,500 (pro-rata)

International Fees

Full time: £15,900
Part time: £5,300 (pro-rata)

MSc Information Systems

J
S
FT
PT

Accredited by

British Computer Society

Duration

1 year full time (September),
3 years part time (September),
16 months full time (January)

Entry requirements

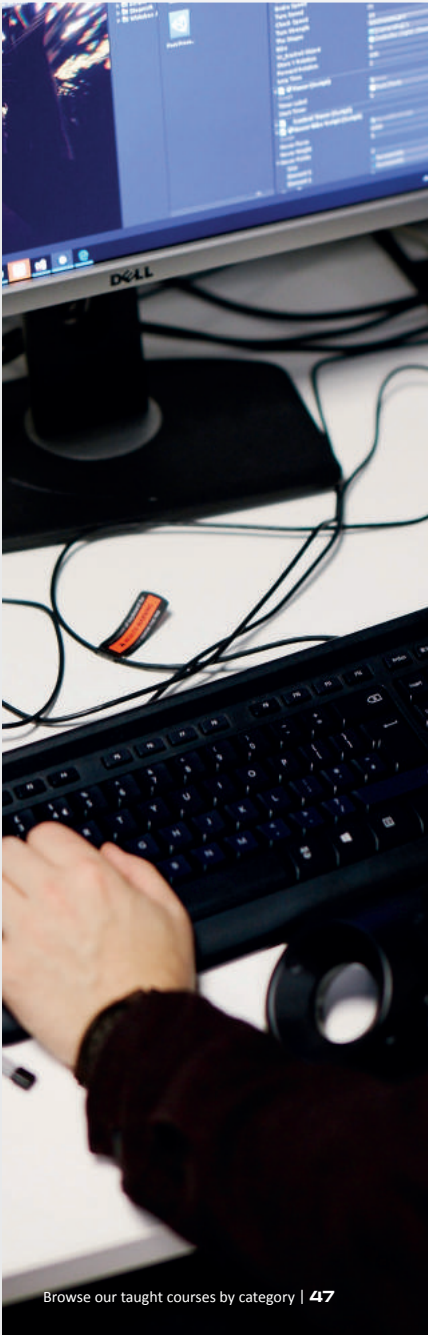
A second-class honours degree in a relevant subject (including Computer Sciences, Business or Social Sciences) or equivalent professional experience and/or qualifications.

UK/EU/Channel Islands Fees

Full time: £7,500
Part time: £2,500 (pro-rata)

International Fees

Full time: £15,900
Part time: £5,300 (pro-rata)



FASCINATED BY QUESTIONS OF CRIMINOLOGY, JUSTICE, SECURITY AND FRAUD

To discover more, search
'MSc Criminal Justice'
at port.ac.uk

Give me a customised postgraduate degree

The unique **Postgraduate Flexible Framework** from our Institute of Criminal Justice Studies empowers you to shape your MSc around what intrigues you.

With the freedom to choose from a wide range of study units, you determine the path of study and dissertation topic that most ignite your enthusiasm. What's more, you'll graduate with a bespoke exit award.

The course is available for campus based or distance learning. Depending on the type you choose, you can opt to focus on one or two of the following key subject areas, which would be reflected in the title of your exit award:

- **Counter Fraud and Counter Corruption**
- **Crime Science**
- **Criminal Justice**
- **Criminal Psychology**
- **Criminology**
- **Cybercrime (campus learning only)**
- **Intelligence (in combination only)**
- **International Criminal Justice**
- **Policing, Policy and Leadership (distance learning only)**
- **Security Management**
- **Victimology (distance learning only)**

Duration

1 year full time, 2 years part time distance learning

UK/EU/Channel Islands Fees

Full time: £8,700

Part time: £4,350 (pro-rata)

Distance learning: 2 years part time £3,500 (pro-rata)

International Fees

Full time: £13,900

Part time: £6,950 (pro-rata)

Distance learning: 2 years part time £3,500 (pro-rata)

'I studied my MSc while working full time, so it was nice to have flexibility. There's a great deal of support from tutors and staff, via phone or email, and learning materials are easily accessible!'

Ashton Kingdon,
MSc Criminology
and Criminal
Justice

There are almost 50 possible combination awards available to you:

Route A

Focus mainly on one subject area from the list (with the option to study one wider unit if you want). Your exit award will reflect this- for example, MSc in Criminology.

Route B

Combine two subject areas, with equal focus on each, and graduate with a dual exit award- for example, MSc in Crime Science and Cybercrime.



CRIMINOLOGY
AND FORENSIC
STUDIES

DRAMA, MUSIC
AND
PERFORMING
ARTS

EARTH AND
ENVIRONMENTAL
SCIENCES

Key to course listings

- Faculty of Creative and Cultural Industries
- Faculty of Technology
- Faculty of Business and Law
- Faculty of Humanities and Social Sciences
- Faculty of Science

- DL** Distance learning
- FT** Full time courses
- PT** Part time courses
- DA** Degree apprenticeship
- J** January start
- F** February start
- S** September start
- ...** Course subject to approval

MSc
Policing, Policy
and Leadership
(Distance
Learning)
(Degree
Apprenticeship)

S
DA
PT
DL

Duration
2 years part time distance learning

Entry requirements
A good honours degree in a relevant subject or equivalent. Exceptionally, a strong profile of relevant professional experience and/or training and demonstration of academic ability to achieve at postgraduate level, will be considered.

UK/EU/Channel Islands Fees International Fees
Please contact the Faculty of Humanities and Social Science

PgCert
Creative
Professional
Development

J
S
FT
PT
DL

Duration
4 months full time,
8 months part time - either with optional campus based element

Entry requirements
An undergraduate degree from the University of Portsmouth. Students who have graduated from the Faculty of Creative and Cultural Industries in July 2017 or July 2018 and are unemployed at the start of the course can apply for a scholarship of £1,300 towards the cost of the course.

UK/EU/Channel Islands Fees
Distance Learning: £1,400 (pro-rata)
International Fees
Please contact the Faculty of Creative and Cultural Industries

MSc
Music
Technology

S
FT
PT

Important note: Please apply via MSc Creative Technologies. Music Technology is a bespoke project option within that course. Your final award will be MSc Music Technology.

Duration
1 year full time
2 years part time

Entry requirements
A good honours degree or equivalent in a relevant subject. We may require you to submit a portfolio online as part of our selection process.

UK/EU/Channel Islands Fees
Full time: £7,500
Part time: £5,200 (pro-rata)
International Fees
Full time: £14,700
Part time: £9,800 (pro-rata)

MSc
Coastal and
Marine Resource
Management

S
FT
PT

Accredited by
Royal Institution of Chartered Surveyors (RICS)

Duration
1 year full time,
2 years part time

Entry requirements
A second-class honours degree or equivalent in a relevant subject. We may consider professional experience and other qualifications if you don't meet this requirement.

UK/EU/Channel Islands Fees
Full time: £7,500
Part time: £2,500 (year 1), £5,000 (year 2)
International Fees
Full time: £13,900
Part time: £4,630 (year 1), £9,270 (year 2)

MSc
Crisis and
Disaster
Management

S
FT
PT

Duration
1 year full time,
2 years part time

Entry requirements
A second-class honours degree or equivalent, preferably with some relevant work experience in the emergency services or humanitarian sectors. We will consider relevant professional experience and/or other qualifications if you don't meet this requirement.

UK/EU/Channel Islands Fees
Full time: £7,500
Part time: £3,750 (pro-rata)
International Fees
Full time: £14,700
Part time: £7,350 (pro-rata)

MSc
Engineering
Geology

S
FT
PT

Accredited by
The Geological Society

Duration
1 year full time,
2 years part time

Entry requirements
A second-class honours degree or equivalent in a relevant earth science or civil engineering field, or a related discipline. Applicants with industrial and work experience will also be considered.

UK/EU/Channel Islands Fees
Full time: £8,700
Part time: £4,350 (pro-rata)
International Fees
Full time: £15,900
Part time: £7,950 (pro-rata)

MSc
Environmental
Geology and
Contamination

S
FT
PT

Duration
1 year full time,
2 years part time

Entry requirements
A second-class honours degree in an earth science, civil engineering, chemistry or environmental science discipline. Relevant industrial and work experience will be considered on an individual basis.

UK/EU/Channel Islands Fees
Full time: £8,700
Part time: £4,350 (pro-rata)
International Fees
Full time: £15,900
Part time: £7,950 (pro-rata)

MSc
Geological and
Environmental
Hazards

S
FT
PT

Accredited by
The Geological Society

Duration
1 year full time,
2 years part time

Entry requirements
A second-class honours degree or equivalent in geology, earth science, applied geology, civil engineering, geography, environmental science or a related discipline. Industrial experience will also be considered on an individual basis.

UK/EU/Channel Islands Fees
Full time: £8,700
Part time: £4,350 (pro-rata)
International Fees
Full time: £15,900
Part time: £7,950 (pro-rata)



ENGINEERING

- Key to course listings**
 - Faculty of Creative and Cultural Industries
 - Faculty of Technology
 - Faculty of Business and Law
 - Faculty of Humanities and Social Sciences
 - Faculty of Science
- DL** Distance learning
FT Full time courses
PT Part time courses
 Degree apprenticeship
J January start
F February start
S September start
 Course subject to approval

MSc Advanced Manufacturing Technology

J
S
FT
PT

Accredited by

Institution of Mechanical Engineers - meeting in part the academic requirements for CEng

Duration

1 year full time (September),
3 years part time (September),
16 months full time (January)

Entry requirements

A second-class honours degree in a relevant subject or equivalent professional experience and/or qualifications.

UK/EU/Channel Islands Fees

Full time: £8,700
Part time: £2,900 (pro-rata)
International Fees
Full time: £15,900
Part time: £5,300 (pro-rata)

MSc Civil Engineering

S
FT
PT

Accredited by

Joint Board of Moderators - meeting the further learning requirements for CEng if you have already acquired an Accredited CEng (partial), BEng (Hons) or Accredited IEng (full) BEng/BSc (Hons) undergraduate first degree

Duration

1 year full time,
2 years part time

Entry requirements

A good honours degree in civil engineering or a related subject, or equivalent industrial and work experience.

UK/EU/Channel Islands Fees

Full time: £8,700
Part time: £4,350 (pro-rata)
International Fees
Full time: £15,900
Part time: £7,950 (pro-rata)

MSc Civil Engineering with Environmental Engineering

S
FT
PT

Accredited by

Joint Board of Moderators - meeting the further learning requirements for CEng if you have already acquired an Accredited CEng (partial), BEng (Hons) or Accredited IEng (full) BEng/BSc (Hons) undergraduate first degree

Duration

1 year full time,
2 years part time

Entry requirements

A good honours degree in civil engineering or a related subject, or equivalent industrial and work experience.

UK/EU/Channel Islands Fees

Full time: £8,700
Part time: £4,350 (pro-rata)
International Fees
Full time: £15,900
Part time: £7,950 (pro-rata)

MSc Civil Engineering with Geotechnical Engineering

S
FT
PT

Accredited by

Joint Board of Moderators - meeting the further learning requirements for CEng if you have already acquired an Accredited CEng (partial), BEng (Hons) or Accredited IEng (full) BEng/BSc (Hons) undergraduate first degree

Duration

1 year full time,
2 years part time

Entry requirements

A good honours degree in civil engineering or a related subject, or equivalent industrial and work experience.

UK/EU/Channel Islands Fees

Full time: £8,700
Part time: £4,350 (pro-rata)
International Fees
Full time: £15,900
Part time: £7,950 (pro-rata)

MSc Civil Engineering with Structural Engineering

S
FT
PT

Accredited by

Joint Board of Moderators - meeting the further learning requirements for CEng if you have already acquired an Accredited CEng (partial), BEng (Hons) or Accredited IEng (full) BEng/BSc (Hons) undergraduate first degree

Duration

1 year full time,
2 years part time

Entry requirements

A good honours degree in civil engineering or a related subject, or equivalent industrial and work experience.

UK/EU/Channel Islands Fees

Full time: £8,700
Part time: £4,350 (pro-rata)
International Fees
Full time: £15,900
Part time: £7,950 (pro-rata)

MSc Construction Project Management

S
FT
PT

Accredited by

Joint Board of Moderators - meeting the further learning requirements for CEng if you have already acquired an Accredited CEng (partial) BEng (Hons) undergraduate first degree

Duration

1 year full time,
2 years part time

Entry requirements

A good honours degree or equivalent in a relevant subject, or equivalent industrial and work experience in construction management or another related field.

UK/EU/Channel Islands Fees

Full time: £7,500
Part time: £3,750 (pro-rata)
International Fees
Full time: £15,900
Part time: £7,550 (pro-rata)

MSc Electronic Engineering

J
S
FT
PT

Accredited by

Institution of Engineering and Technology (IET) - meeting in part the academic requirements for CEng

Duration

1 year full time (September),
3 years part time (September),
16 months full time (January)

Entry requirements

A second-class honours degree in a relevant subject or equivalent professional experience and/or qualifications.

UK/EU/Channel Islands Fees

Full time: £8,700
Part time: £2,900 (pro-rata)
International Fees
Full time: £15,900
Part time: £5,300 (pro-rata)

MSc Energy and Power Systems Management

J
S
FT
PT

Duration

1 year full time (September),
3 years part time (September),
16 months full time (January)

Entry requirements

A second-class honours degree in a relevant subject or equivalent professional experience and/or qualifications.

UK/EU/Channel Islands Fees

Full time: £8,700
Part time: £2,900 (pro-rata)
International Fees
Full time: £15,900
Part time: £5,300 (pro-rata)



ENGINEERING

ENGLISH AND
CREATIVE
WRITING

MSc
Mechanical
Engineering

J
S
FT
PT

Accredited by

Institution of Mechanical Engineers/
Institution of Engineering and Technology
(IET)- meeting in part the academic
requirements for CEng

Duration

1 year full time (September),
3 years part time (September),
16 months full time (January)

Entry requirements

A second-class honours degree in
a relevant subject or equivalent
professional experience and/
or qualifications.

UK/EU/Channel Islands Fees

Full time: £8,700
Part time: £2,900 (pro-rata)

International Fees

Full time: £15,900
Part time: £5,300 (pro-rata)

MSc
Petroleum
and Gas
Engineering

S
FT
PT

Duration

1 year full time,
3 years part time

Entry requirements

A second-class honours degree or
equivalent in a science or engineering
subject. Professionals with other
qualifications and a minimum of three
years relevant industrial experience may
also be considered.

UK/EU/Channel Islands Fees

Full time: £8,700
Part time: £2,900 (pro-rata)

International Fees

Full time: £15,900
Part time: £5,300 (pro-rata)

MA
Creative Writing

S
FT
PT

Duration

1 year full time,
2 years part time

Entry requirements

A good honours degree in a related
subject. Equivalent qualifications and/or
notable experience as a creative writer
will also be considered. We may require
you to submit an online portfolio as part
of our selection process.

UK/EU/Channel Islands Fees

Full time: £7,000
Part time: £4,670 (year 1), £2,330 (year 2)

International Fees

Full time: £13,900
Part time: £9,270 (year 1), £4,630 (year 2)

'I feel like my job
prospects are
now unlimited.
The course gave
me important
skills, insight
into the industry,
professional status
and the chance to
see my design in a
product that's going
to market.'

Isaac Emere Johnson,
MEng Electronic
Engineering

Key to course listings

- Faculty of Creative and Cultural Industries
- Faculty of Technology
- Faculty of Business and Law
- Faculty of Humanities and Social Sciences
- Faculty of Science

- DL Distance learning
- FT Full time courses
- PT Part time courses
- Degree apprenticeship
- J January start
- F February start
- S September start
- Course subject to approval

- Key to course listings**
- Faculty of Creative and Cultural Industries
 - Faculty of Technology
 - Faculty of Business and Law
 - Faculty of Humanities and Social Sciences
 - Faculty of Science
- DL** Distance learning
- FT** Full time courses
- PT** Part time courses
- DA** Degree apprenticeship
- J** January start
- F** February start
- S** September start
- ...** Course subject to approval

MA Data Visualisation Design

S
FT
PT

Duration

1 year full time,
2 years part time

Entry requirements

A good honours degree in a related subject including design, media, communications, illustration, information technology and cultural and theoretical studies, or equivalent professional experience and/or qualifications. We may require you to interview or submit an online portfolio as part of our selection process.

UK/EU/Channel Islands Fees

Full time: £7,500
Part time: £2,500 (year 1), £5,000 (year 2)

International Fees

Full time: £13,900
Part time: £4,630 (year 1), £9,270 (year 2)

MA Fashion and Textiles

S
FT
PT

Duration

1 year full time,
2 years part time

Entry requirements

A good honours degree in a related subject or equivalent professional experience and/or qualifications. We will require you to interview or submit an online portfolio as part of our selection process.

UK/EU/Channel Islands Fees

Full time: £7,500
Part time: £3,750 (pro rata)

International Fees

Full time: £13,900
Part time: £6,950 (pro rata)

MA Graphic Design

S
FT
PT

Duration

1 year full time,
2 years part time

Entry requirements

A good honours degree in graphic design or a related subject or equivalent professional experience and/or qualifications. We will require you to interview or submit an online portfolio as part of our selection process.

UK/EU/Channel Islands Fees

Full time: £7,500
Part time: £2,500 (year 1), £5,000 (year 2)

International Fees

Full time: £13,900
Part time: £4,630 (year 1), £9,270 (year 2)

MA Illustration

S
FT
PT

Duration

1 year full time,
2 years part time

Entry requirements

A good honours degree in a related subject or equivalent professional experience and/or qualifications. We will require you to interview or submit an online portfolio as part of our selection process.

UK/EU/Channel Islands Fees

Full time: £7,500
Part time: £2,500 (year 1), £5,000 (year 2)

International Fees

Full time: £13,900
Part time: £4,630 (year 1), £9,270 (year 2)

MA Photography

S
FT
PT

Duration

1 year full time,
2 years part time

Entry requirements

A good honours degree in a related subject or equivalent professional experience and/or qualifications. We will require you to interview or submit an online portfolio as part of our selection process.

UK/EU/Channel Islands Fees

Full time: £7,500
Part time: £2,500 (year 1), £5,000 (year 2)

International Fees

Full time: £13,900
Part time: £4,630 (year 1), £9,270 (year 2)

MSc Film and Television

S
FT
PT

Important note: Please apply via MSc Creative Technologies. Film and Television is a bespoke project option within that course. Your final award will be MSc Film and Television.

Duration

1 year full time,
2 years part time

Entry requirements

A good honours degree or equivalent in a relevant subject. We may require you to submit a portfolio online as part of our selection process.

UK/EU/Channel Islands Fees

Full time: £7,500
Part time: £5,000 (year 1), £2,500 (year 2)

International Fees

Full time: £14,700
Part time: £9,800 (year 1), £4,900 (year 2)



MSc
Geographical
Information
Systems

S
FT
PT

Duration
1 year full time,
3 years part time

Entry requirements
A second-class honours degree or equivalent in geography or a related subject. We may consider relevant professional experience and other qualifications if you don't meet this requirement.

UK/EU/Channel Islands Fees
Full time: £7,500
Part time: £2,500 (pro-rata)
International Fees
Full time: £13,900
Part time: £4,630 (pro-rata)

PgCert
Occupational
Health and
Safety
Management
(Learning at Work)

J
PT
DL

Accredited by
Institution of Occupational Safety and Health (IOSH)

Duration
1 year part time

Entry requirements
Appropriate experience and proven aptitude in health and safety, a certificated professional/vocational qualification or an undergraduate degree (or equivalent). If you don't hold a level 6 qualification, we may ask you to present evidence of your ability to study at this level.

UK/EU/Channel Islands Fees
Distance learning: £3,730
International Fees
Distance learning: £5,300

MSc
Occupational
Health and
Safety
Management
(Learning at Work)

J
S
PT
DL

Accredited by
Institution of Occupational Safety and Health (IOSH)

Duration
Flexible, part time distance learning

Entry requirements
Appropriate experience and proven aptitude in health and safety, a certificated professional/vocational qualification or an undergraduate degree (or equivalent). If you don't hold a level 6 qualification, we may ask you to present evidence of your ability to study at this level.

UK/EU/Channel Islands Fees
Distance learning: £10,200
International Fees
Distance learning: £10,200

MSc
Occupational
Health,
Safety and
Environmental
Management
(Learning at Work)

J
S
PT
DL

Accredited by
Institution of Occupational Safety and Health (IOSH)

Duration
Flexible, part time distance learning

Entry requirements
Appropriate experience and proven aptitude in health and safety, a certificated professional/vocational qualification or an undergraduate degree (or equivalent). If you don't hold a level 6 qualification, we may ask you to present evidence of your ability to study at this level.

UK/EU/Channel Islands Fees
Distance learning: £10,200
International Fees
Distance learning: £10,200

Preparing
for Practice
Appraisal
Dental

PT
DL

Duration
1 year part time distance learning

Entry requirements
2:1 honours degree or equivalent in a dental or healthcare related subject. Alternative qualifications or relevant experience in healthcare management will be considered on a case-by-case basis. Non standard applications may require an interview.

UK/EU/Channel Islands Fees
Short course: £2,500

PgCert
Prescribing and
Therapeutics

J
S
PT

Duration
1 year part time

Entry requirements
A Pharmacy degree (BSc, BPharm or MPharm) with a second class degree, registration as a practising pharmacist with the General Pharmaceutical Council and two years UK-based patient-facing experience post-registration. You must have the written agreement of a Designated Medical Practitioner to mentor you throughout the course, as well as the support of your employing organisation where applicable. If shortlisted, you'll be invited to interview.

UK/EU/Channel Islands Fees
Part time: £2,230
International Fees
Part time: £2,230

MSc
Social Work

S
FT

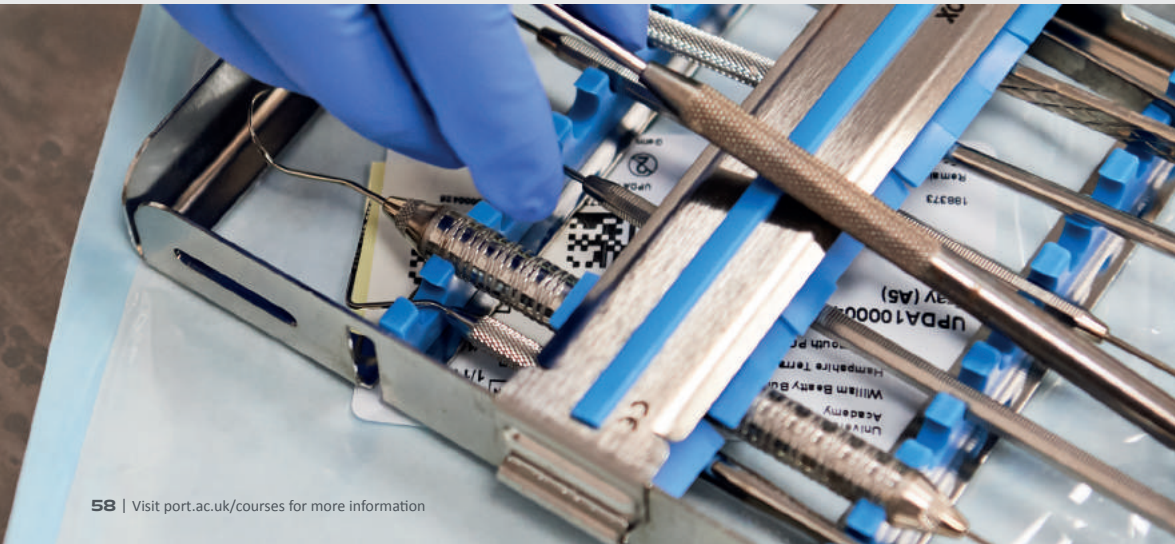
Accredited by
Health and Care Professions Council (HCPC)

Duration
2 years full time

Entry requirements
2:1 honours degree in a relevant subject or a degree in an associated discipline. Applicants with a second class degree will be considered on an individual basis, in relation to relevant experience and academic achievement. All applicants must have more than 3 months experience in voluntary or paid employment in a health, education or social care environment. If shortlisted, you'll be invited to interview. Offers are subject to Enhanced Disclosure and Barring Service (DBS) clearance and Occupational Health clearance.

UK/EU/Channel Islands Fees
Full time: £10,200 (per year)
International Fees
Full time: £13,900 (per year)

- Key to course listings**
- Faculty of Creative and Cultural Industries
 - Faculty of Technology
 - Faculty of Business and Law
 - Faculty of Humanities and Social Sciences
 - Faculty of Science
- DL** Distance learning
- FT** Full time courses
- PT** Part time courses
- D** Degree apprenticeship
- J** January start
- F** February start
- S** September start
- ...** Course subject to approval



MSc
International
Development
Studies

S
PT
DL

Duration
3 years part time

Entry requirements
A good honours degree in a relevant subject or equivalent professional experience and/or qualifications.

UK/EU/Channel Islands Fees
Distance learning: £2,330 (pro-rata)
International Fees
Distance learning: £2,330 (pro-rata)

PgDip
International
Development
Studies

J
S
PT
DL

Duration
2 years part time

Entry requirements
A good honours degree in a relevant subject or equivalent professional experience and/or qualifications.

UK/EU/Channel Islands Fees
Distance learning: £2,330 (pro-rata)
International Fees
Distance learning: £2,330 (pro-rata)

PgCert
International
Development
Studies

J
S
PT
DL

Duration
1 year part time

Entry requirements
A good honours degree in a relevant subject or equivalent professional experience and/or qualifications.

UK/EU/Channel Islands Fees
Distance learning: £2,330
International Fees
Distance learning: £2,330

MA
International
Relations

J
S
PT
DL

Duration
13 months full time,
2 years part time

Entry requirements
A good honours degree in a social science, humanities or related subject.

UK/EU/Channel Islands Fees
Full time: £7,000
Part time: £3,500 (pro-rata)
International Fees
Full time: £13,900
Part time: £6,950 (pro-rata)

MA
Naval History

S
FT
PT
DL

Duration
1 year full time
2 years part time

Entry requirements
A good honours degree or equivalent in history or a related subject, or equivalent professional experience in a relevant field such as heritage or the navy and armed forces.

UK/EU/Channel Islands Fees
Distance learning: 1 year full time £7,000
Distance learning: 2 years part time £3,500 (pro-rata)
International Fees
Distance learning: 1 year full time £7,000 (pro-rata)
Distance learning: 2 years part time £3,500 (pro-rata)

- Key to course listings**
- Faculty of Creative and Cultural Industries
 - Faculty of Technology
 - Faculty of Business and Law
 - Faculty of Humanities and Social Sciences
 - Faculty of Science
 - Distance learning
 - Full time courses
 - Part time courses
 - Degree apprenticeship
 - January start
 - February start
 - September start
 - Course subject to approval



LANGUAGES

MA Applied Linguistics and TESOL

S FT DL

Duration
1 year full time,
2 years part time,
3 years part time distance learning

Entry requirements
A good honours degree or equivalent, plus initial teacher training and a minimum of three months full time, relevant, teaching experience.

UK/EU/Channel Islands Fees
Full time: £7,500
Part time: £3,750 (pro-rata)
Distance learning: £2,330 (pro-rata)
International Fees:
Full time: £13,900
Part time: £6,950 (pro-rata)
Distance learning: £2,330 (pro-rata)

MA Communications and Applied Linguistics

J S FT PT DL

Duration
1 year full time (September),
2 years part time (September),
3 years part time distance learning (September and January)

Entry requirements
A good honours degree in a relevant subject, or equivalent professional experience and/or qualifications.

UK/EU/Channel Islands Fees
Full time: £7,500
Part time: £3,750 (pro-rata)
Distance learning: £2,330 (pro-rata)
International Fees:
Full time: £13,900
Part time: £6,950 (pro-rata)
Distance learning: £2,330 (pro-rata)

MA TESOL, Leadership and Management

J S FT DL

Duration
3 years part time

Entry requirements
A good honours degree or equivalent in a relevant subject, plus initial teacher training and a minimum of three months full time, relevant, teaching experience.

UK/EU/Channel Islands Fees
Distance learning: £2,330 (pro-rata)
International Fees
Distance learning: £2,330 (pro-rata)

MA Translation Studies

J S FT PT DL

Accredited by
European Commission

Duration
1 year full time (September),
2 years part time (September),
3 years distance learning (January)

Entry requirements
A good honours degree in a relevant subject, or equivalent professional experience and/or qualifications. If your main language is English, you'll need advanced knowledge of at least one other language (Arabic, Chinese, French, German, Italian, Japanese, Polish, Russian or Spanish).

UK/EU/Channel Islands Fees
Full time: £7,500
Part time: £3,750 (pro-rata)
Distance learning: £2,500 (pro-rata)
International Fees:
Full time: £13,900
Part time: £6,950 (pro-rata)
Distance learning: £2,500 (pro-rata)

LAW

- Key to course listings**

 - Faculty of Creative and Cultural Industries
 - Faculty of Technology
 - Faculty of Business and Law
 - Faculty of Humanities and Social Sciences
 - Faculty of Science
- DL Distance learning
 - FT Full time courses
 - PT Part time courses
 - Degree apprenticeship
 - J January start
 - F February start
 - S September start
 - Course subject to approval

LLM Corporate Governance and Law/Grad ICSA

S FT PT

Accredited by
Institute of Chartered Secretaries and Administrators (ICSA)/Chartered Institute of Legal Executives/Chartered Institute of Arbitrators

Duration
1 year full time,
30 months part time

Entry requirements
A second-class honours degree or equivalent professional experience and/or qualifications.

UK/EU/Channel Islands Fees
Full time: £8,700
Part time: £2,900 (pro-rata)
International Fees
Full time: £14,700
Part time: £4,900 (pro-rata)

LLM Dispute Resolution

S FT PT

Accredited by
Chartered Institute of Arbitrators

Duration
1 year full time,
30 months part time

Entry requirements
A second-class honours degree or equivalent professional experience and/or qualifications.

UK/EU/Channel Islands Fees
Full time: £8,700
Part time: £2,900 (pro-rata)
International Fees
Full time: £14,700
Part time: £4,900 (pro-rata)

PgCert Dispute Resolution

S PT

Accredited by
Chartered Institute of Arbitrators

Duration
1 year part time

Entry requirements
A second-class honours degree or equivalent professional experience and/or qualifications.

UK/EU/Channel Islands Fees
Part time: £2,900
International Fees
Part time: £4,900

LLM Law

S FT PT

Accredited by
Chartered Institute of Legal Executives /Chartered Institute of Arbitrators

Duration
1 year full time,
30 months part time

Entry requirements
A second-class honours degree or equivalent professional experience and/or qualifications.

UK/EU/Channel Islands Fees
Full time: £7,500
Part time: £2,500 (pro-rata)
International Fees
Full time: £14,700
Part time: £4,900 (pro-rata)

MEDIA AND JOURNALISM

MSc Digital Media

S
FT
PT

Duration
1 year full time,
3 years part time

Entry requirements
A good honours degree in a computing or information technology subject or an art-based subject with a significant information technology component, or equivalent professional experience and /or qualifications.

UK/EU/Channel Islands Fees
Full time: £7,500
Part time: £2,500 (pro-rata)
International Fees
Full time: £14,700
Part time: £4,900 (pro-rata)

MA Media and Communication

S
FT
PT

Duration
1 year full time,
2 years part time

Entry requirements
A second-class honours degree in a relevant subject, or equivalent professional experience and /or qualifications.

UK/EU/Channel Islands Fees
Full time: £7,000
Part time: £3,500 (pro-rata)
International Fees
Full time: £13,900
Part time: £6,950 (pro-rata)



PSYCHOLOGY

MSc Child Forensic Studies: Psychology and Law (Distance Learning)

S
PT
DL

Duration
2 years part time distance learning

Entry requirements
A good honours degree or equivalent in a relevant subject. If you have a professional qualification not at degree level, you may be accepted - we consider each application on an individual basis according to academic and professional qualifications, and experience.

UK/EU/Channel Islands Fees
Distance Learning: £4,350 (pro-rata)
International Fees
Distance Learning: £4,350 (pro-rata)

MSc Forensic Psychology

S
FT
PT

Accredited by
British Psychological Society (BPS)

Duration
1 year full time,
2 years part time

Entry requirements
A good honours degree in psychology, recognised by the BPS as conferring Graduate Basis for Chartered membership (GBC). You will be required to interview. All offers are subject to Enhanced Disclosure and Barring Service (DBS) clearance.

UK/EU/Channel Islands Fees
Full time: £8,700
Part time: £2,900 (year 1), £5,800 (year 2)
International Fees
Full time: £15,900
Part time: £5,300 (year 1), £10,600 (year 2)

PgDip Forensic Psychology Practice

F
PT

Accredited by
Health and Care Professions Council (HCPC)

Duration
2 years part time (February)

Entry requirements
An undergraduate degree or conversion course in psychology or forensic psychology, or which confers Graduate Basis for Chartered status (GBC) - plus a BPS accredited Master's degree which confers Stage I of the BPS Qualification in Forensic Psychology. If you haven't completed these prior degrees, you may be able to take our MSc Forensic Psychology as an alternative. We expect you to have at least 12 months experience in an applied forensic psychology setting, or equivalent. All applicants are subject to interview/assessment. All offers are subject to Enhanced Disclosure and Barring Service (DBS) clearance.

UK/EU/Channel Islands Fees
Part time: £3,400 (pro-rata)
International Fees
Part time: £5,300 (pro-rata)

MSc Health Psychology

S
FT
PT
...

Accredited by
British Psychological Society (BPS)

Duration
1 year full time,
2 years part time

Entry requirements
A good honours degree in psychology, recognised by the BPS as conferring Graduate Basis for Chartered membership (GBC). You will be required to interview. All offers are subject to Enhanced Disclosure and Barring Service (DBS) clearance.

UK/EU/Channel Islands Fees
Full time: £8,700
Part time: £2,900 (year 1), £5,800 (year 2)
International Fees
Full time: £15,900
Part time: £5,300 (year 1), £10,600 (year 2)

MSc Psychology and Learning Disability

S
PT
DL

Duration
2 years part time

Entry requirements
A good honours degree or equivalent in a relevant subject. Applicants with a professional qualification not at degree level may be accepted - each application is considered on an individual basis according to academic qualifications, professional qualifications and experience.

UK/EU/Channel Islands Fees
Distance learning: £4,350 (pro-rata)
International Fees
Distance learning: £4,350 (pro-rata)

- Key to course listings**
- Faculty of Creative and Cultural Industries
 - Faculty of Technology
 - Faculty of Business and Law
 - Faculty of Humanities and Social Sciences
 - Faculty of Science
- DL** Distance learning
FT Full time courses
PT Part time courses
DL Degree apprenticeship
J January start
F February start
S September start
... Course subject to approval

- Key to course listings**

 - Faculty of Creative and Cultural Industries
 - Faculty of Technology
 - Faculty of Business and Law
 - Faculty of Humanities and Social Sciences
 - Faculty of Science
- DL** Distance learning
 - FT** Full time courses
 - PT** Part time courses
 - Degree apprenticeship
 - J** January start
 - F** February start
 - S** September start
 - Course subject to approval

MSc
Clinical
Exercise Science

S
FT
PT

Accredited by
Provides entry to the Register of Exercise Professionals (REPs) endorsed by PD:Approval

Duration
1 year full time,
2 years part time

Entry requirements
2:1 honours degree or equivalent in a relevant subject. You will be required to interview. All offers are subject to Enhanced Disclosure and Barring Service (DBS) clearance and Occupational Health clearance. In addition, you must have completed (or be in the process of acquiring) an industry-approved exercise referral qualification, such as the University of Portsmouth's Exercise Referral Course, which can be provided prior to commencing the course. If you don't meet this requirement, we may take professional experience and other qualifications into consideration.

UK/EU/Channel Islands Fees
Full time: £8,700
Part time: £4,350 (pro-rata)
International Fees
Full time: £13,900
Part time: £6,950 (pro-rata)

PgCert
Clinical
Exercise Science

S
PT

Duration
1 year part time

Entry requirements
2:1 honours degree or equivalent in a relevant subject. You will be required to interview. All offers are subject to Enhanced Disclosure and Barring Service (DBS) clearance and Occupational Health clearance. In addition, you must have completed (or be in the process of acquiring) an industry-approved exercise referral qualification, such as the University of Portsmouth's Exercise Referral Course, which can be provided prior to commencing the course. If you don't meet this requirement, we may take professional experience and other qualifications into consideration.

UK/EU/Channel Islands Fees
Part time: £2,900 (pro-rata)
International Fees
Part time: £4,630 (pro-rata)

PgDip
Clinical
Exercise Science

S
FT
PT

Duration
1 year full time,
2 years part time

Entry requirements
2:1 honours degree or equivalent in a relevant subject. You will be required to interview. All offers are subject to Enhanced Disclosure and Barring Service (DBS) clearance and Occupational Health clearance. In addition, you must have completed (or be in the process of acquiring) an industry-approved exercise referral qualification, such as the University of Portsmouth's Exercise Referral Course, which can be provided prior to commencing the course. If you don't meet this requirement, we may take professional experience and other qualifications into consideration.

UK/EU/Channel Islands Fees
Full time: £5,800
Part time: £2,900 (pro-rata)
International Fees
Full time: £9,270
Part time: £4,630 (pro-rata)

MSc
Human and
Applied
Physiology

S
FT
PT

Duration
1 year full time,
2 years part time

Entry requirements
A second-class honours degree or equivalent in a relevant subject. Equivalent professional experience and /or qualifications may be considered.

UK/EU/Channel Islands Fees
Full time: £7,500
Part time: £3,750 (pro-rata)
International Fees
Full time: £13,900
Part time: £6,950 (pro-rata)



MSc
Physical
Activity, Exercise
and Health

S
FT
PT

Duration
1 year full time,
2 years part time

Entry requirements
2:1 honours degree or equivalent in a relevant subject.

UK/EU/Channel Islands Fees
Full time: £7,500
Part time: £3,750 (pro-rata)
International Fees
Full time: £13,900
Part time: £6,950 (pro-rata)

MSc
Sport and
Exercise
Psychology
(BPS Accredited)

S
FT
PT

Accredited by
British Psychological Society (BPS)

Duration
1 year full time,
2 years part time

Entry requirements
2:1 honours degree or equivalent in a sport and exercise science, psychology, sports psychology or related subject. We will consider alternative qualifications on a case by case basis.

UK/EU/Channel Islands Fees
Full time: £7,500
Part time: £3,750 (pro-rata)
International Fees
Full time: £13,900
Part time: £6,950 (pro-rata)

MSc
Sports
Management

S
FT
PT

Duration
1 year full time,
2 years part time
Both include mandatory work based learning element

Entry requirements
A second class honours degree in a sport, business or management subject. Applicants who hold a non-related degree will be considered on a case-by-case basis. If you don't hold a degree or relevant professional qualification, we'll expect you to demonstrate extensive experience together with evidence of scholarly ability.

UK/EU/Channel Islands Fees
Full time: £7,500
Part time: £3,750 (pro-rata)
International Fees
Full time: £13,900
Part time: £6,950 (pro-rata)

MSc
Sports
Performance

S
FT
PT

Duration
1 year full time,
2 years part time

Entry requirements
2:1 honours degree or equivalent in a relevant subject. Applicants who hold a non-related degree will be considered on a case-by-case basis. If you do not hold a degree or relevant professional qualification, we'll expect you to demonstrate extensive experience together with evidence of scholarly ability.

UK/EU/Channel Islands Fees
Full time: £7,500
Part time: £2,500 (year 1), £5,000 (year 2)
International Fees
Full time: £13,900
Part time: £4,630 (year 1), £9,270 (year 2)



DEVELOP RESEARCH SKILLS AND PURSUE A PERSONAL PROJECT AT MASTER'S LEVEL

Give me an MRes degree

MRes is the perfect preparation for a future in academia or a research-focused profession.

Joining an active research community, you'll develop vital skills by training in research methodology. Then you'll put those skills into action by completing a research project.

Your project will be tailored to your interests. You choose the subject and work alongside experts in the subject to explore your original take on what fascinates you.

What can you research? The potential options are broad and deep.

MRes Creative Industries

Includes Architecture; Art, Design and Performance; Creative Technologies; Film, Media and Communications.

MRes Humanities and Social Sciences

Includes Criminal Justice; Education and Sociology; Languages and Applied Linguistics; Area Studies, History, Politics and Literature.

MRes Science

Includes Biological Sciences; Dental Studies; Earth and Environmental Sciences; Geography; Health Sciences and Social Work; Pharmacy and Biomedical Sciences; Psychology; Sport and Exercise Science.

MRes Technology

Includes Civil Engineering and Surveying; Computing; Cosmology and Gravitation; Energy and Electronic Engineering; Mechanical and Design Engineering; Maths; Physics.

Duration

1 year full time, 2 years part time.

Fees

MRes fees differ dependent on your mode of study and fee status. Check our website for more information.

Distance learning option?

Yes, for Humanities and Social Sciences and Technology only.

January intake option?

Yes, for Creative Industries and Science only. All MRes courses have a September intake.

Entry requirements

An upper second-class honours degree (a 2:1) in a relevant subject. Depending on your MRes, you may need to write a short research proposal and/or attend an interview.

To discover more,
visit port.ac.uk/mres



CHOOSING YOUR ROUTE TO RESEARCH

TREAT THESE LISTINGS AS A GUIDE TO THE TYPES OF RESEARCH DEGREE YOU CAN ACHIEVE HERE. NATURALLY, WHEN IT COMES TO THE DETAILS OF YOUR PERSONAL RESEARCH TOPIC, WE'LL NEED TO TALK.

To explore more specific research areas, see the list on page 70 overleaf - then get in touch for a chat about your preferred topics and options.

To discover whether your ideal supervisor is here, search our comprehensive research database at researchportal.port.ac.uk

Sometimes there may be a pre-approved research project you can be part of. To find out if that's the case right now, visit port.ac.uk/researchprojects

For a range of information including types of degree, funding options and help we can provide, visit port.ac.uk/postgraduate-research



PhD/MD/MPhil

Duration

PhD: 3 years full time, 6 years part time
MD: 2 years full time, 4 years part time
MPhil: 2 years full time, 4 years part time

Entry requirements

A second-class honours degree or equivalent in a relevant subject or a Master's degree in an appropriate subject. Exceptionally, equivalent professional experience and/or qualifications will be considered. If shortlisted, you'll be invited to interview.

UK/EU/Channel Islands Fees

2018 entry

Full time: £4,260 (Per annum)*

Part time: £2,130 (Per annum)*

International Fees

2019 entry

Full time: £13,900-£15,900 (Per annum)*

Part time: £6,950-7,950 (Per annum)*

*All fees are subject to annual increase.
UK/EU/Channel Islands fees for 2019 entry will be confirmed in Spring 2019.

You can typically choose to begin a PhD or MPhil in either October or February. You can do research in a wide range of subject areas, including:

- Accounting, Economics and Finance
- Architecture, Civil Engineering and Surveying
- Art and Design
- Biological Sciences
- Biomedical, Biomolecular and Pharmacy
- Business and Management
- Computing and Creative Technologies
- Cosmology and Astrophysics
- Dental Academy
- Earth and Environmental Sciences
- Education, Childhood and Youth Studies
- Engineering
- English Literature
- Film, Media and Performing Arts
- Geography
- Health Sciences and Social Work
- History, Sociology and Politics
- Law and Criminology
- Mathematics and Physics
- Modern Languages and Area Studies
- Psychology
- Sports and Exercise Sciences

Professional Doctorates

Duration

4-7 years part time (September)
DForenPsy: 2 years full time (February)

Entry requirements

A postgraduate level qualification or equivalent in an appropriate subject. If applying to pursue a Professional Doctorate, you must be in a work environment that can support your professional research and development project. If shortlisted, you'll be invited to interview. Certain Professional Doctorates may have additional entry requirements, so please do check the course entry at port.ac.uk

Fees

Fees differ dependent on your mode of study and fee status. Check our website for more information.

We offer Professional Doctorates in the following broad subject areas:

- Biomedical Science (DBMS)
- Business Administration (DBA)
- Chiropractic (DChiro)
- Criminal Justice Studies (DCrimJ)
- Education (EdD)
- Forensic Psychology (DForenPsy)
- Health Science (DHealthSci)
- Medical Imaging (DMedImg)
- Nursing (DNursing)
- Pharmacy (DPharm)
- Security Risk Management (DSyRM)
- Social Work (DSW)
- Sport, Exercise and Health Science
- Sport and Exercise Psychology

PhD by Publication

Duration

1 year part time

Entry requirements

A PhD by publication is based on research you've already undertaken and had published (excluding self-publishing) before registering with us. Peer-reviewed academic papers, complete books or chapters in anthologies, and any other materials accepted for publication, exhibited or performed are all eligible. You'll have to submit these materials for examination between 6-12 months after registering with us.

UK/EU/Channel Islands Fees

2018 entry

External candidates: £4,260



Explore the range of
our research degrees
and areas of expertise
at [port.ac.uk/
postgraduate-research](http://port.ac.uk/postgraduate-research)

Useful information

We've tried to anticipate as many of your questions about the University of Portsmouth as possible, but if there's anything we haven't covered, please get in touch.

Admissions Enquiries (Home and International)

T +44 (0)23 9284 5566
E admissions@port.ac.uk

Follow us

 [UniversityofPortsmouth](#)

 [@portsmouthuni](#)

 [UniversityofPortsmouth](#)

 [@portsmouthuni](#)

Other contacts

There are numerous sources of useful information available to you:

thestudentroom.co.uk

The largest student community in the world, with over 1.8m members.

prospects.ac.uk

Advice on applying to universities, apprenticeships, jobs and work experience, and more.

gov.uk

Student Finance England is the official provider of postgraduate student loans.

Terms and conditions

When you accept an offer to study at the University of Portsmouth, you also agree to our terms and conditions as well as the University's policies, rules and regulations.

It is best to be aware of these documents and to read them before you accept your offer of a place. This is so you understand the commitment you are making and what you can expect from the University.

Note that our policies, rules and regulations may change at the start of any academic year. The most up-to-date versions can be found at port.ac.uk/policies-and-procedures

If you would like more information on how we process your application, there's more on our undergraduate applications, postgraduate applications or international applications pages.

It is important that you read and make sure you understand this disclaimer which forms part of the terms and conditions of your studies should you choose to study at Portsmouth.

We (the University of Portsmouth) have checked the information in this prospectus and believe that it is accurate at the time of going to press (September 2018). However, it is possible that some course details may change over time, either where the changes are unavoidable through, for example, staff changes, or where it is believed that the changes would be beneficial to the course, such as updating the course content to reflect changes in the discipline or the industry. The University will take all reasonable steps to minimise the impact of any

changes on students. Applicants for such courses will be informed of any significant changes, such as course content changes, with as much notice as possible, so the effects of any changes can be considered by you. You are advised to check the University website for the most up-to-date information at all times, and/or to contact the University for further details if you are at any time uncertain of information.

The information on our website for each course includes tuition fee terms and conditions. This sets out in detail how tuition fees are calculated, increased and charged. It may be necessary, on some courses, to pay extra costs in relation to field trips/study visits etc. If this is the case, this information will be available on the Application Fees and Funding pages of the University website.

As above, you are advised, at all times, to check the University website for the most up-to-date information on tuition, and other, fees.

Courses advertised as 'subject to approval' have successfully completed the first stage of the course approval process. However, the full academic detail is subject to consideration and approval by the University in the second and final stage of the approval process, which happens after this publication is printed. Applicants for such courses will be informed of any significant changes to the advertised course as soon as possible during the application process so that you may make an informed choice about the course.

Where a change to the course content and/or fees has a material adverse impact on you, you will be entitled to terminate your obligations to the University.

It is your responsibility to confirm that the course you wish to study is suitable for your needs (particularly any special needs/disabilities you might have), interests and abilities, and that the service, support and facilities provided by the University of Portsmouth meet your requirements. If you accept the offer of a place on one of our courses but later decide that you wish to change or withdraw from your course of study, without there being any changes to the course for which you applied, the responsibility for doing so and for any costs that you may incur is yours alone.

The University will provide its services to you with all due care and skill. We do not accept responsibility if we are unable to fulfil our teaching commitments at all through circumstances beyond our control. These include (by way of example but not limitation) illness, industrial action, civil emergencies or the actions of third parties. We will always try, however, where possible, to make alternative arrangements to fulfil our commitments to you.

All fees are subject to change and are subject to an annual increase each academic year. If you have any queries regarding a tuition fee quoted in this publication, please contact tuition.fee@port.ac.uk. Tuition fee terms and conditions can be found at port.ac.uk/about-us/legal/tuition-fees-terms-and-conditions



Course index alphabetical

A

Accounting with Finance (MSc)	33
Advanced Manufacturing Technology (MSc)	52
Applied Aquatic Biology (MSc)	36
Applied Linguistics and TESOL (MA)	62
Architecture (MArch)	34
Architecture and Professional Practice (MArch)	34

B

Biotechnology (MSc)	36
Building Information Management (MSc)	35
Building Information Management (PgCert)	35
Business and Management (MSc)	36

C

Child Forensic Studies: Psychology and Law (MSc)	65
Civil Engineering (MSc)	52
Civil Engineering with Environmental Engineering (MSc)	52
Civil Engineering with Geotechnical Engineering (MSc)	52
Civil Engineering with Structural Engineering (MSc)	53
Clinical Exercise Science (MSc)	66
Clinical Exercise Science (PgCert)	66
Clinical Exercise Science (PgDip)	66
Computer Animation (MSc)	45
Computer Games Technology (MSc)	45
Computer Network Administration and Management (MSc)	47
Coaching and Development (MSc)	36
Coaching and Development (PgCert)	36
Coaching and Development (PgDip)	37
Coaching and Development (Dubai) (PgCert)	37
Coaching and Development (Dubai) (PgDip)	37
Coastal and Marine Resource Management (MSc)	50
Communications and Applied Linguistics (MA)	62
Construction Project Management (MSc)	53
Corporate Finance (MSc)	33
Corporate Governance and Law/Grad (ICSA LLM)	63
Counter Fraud and Counter Corruption (MSc)	48
Creative Professional Development (PgCert)	50
Creative Writing (MA)	54
Crime Science (MSc)	48
Criminal Justice (MSc)	48
Criminal Psychology (MSc)	48
Criminology (MSc)	48
Crisis and Disaster Management (MSc)	50

D

Data Analytics (MSc)	47
Data Visualisation Design (MA)	56
Digital Marketing (MA)	37
Digital Media (MSc)	64
Dispute Resolution (LLM)	63
Dispute Resolution (PgCert)	63

E

Economics, Finance and Banking (MSc)	33
Educational Leadership and Management (MSc)	44
Educational Leadership and Management (PgCert)	44
Educational Leadership and Management (PgDip)	44
Educational Leadership and Management (Degree Apprenticeship) (MSc)	44
Education Studies (MA)	44
Electronic Engineering (MSc)	53
Energy and Power Systems Management (MSc)	53
Engineering Geology (MSc)	51
Environmental and Geology Contamination (MSc)	51

Key to course listings

- Faculty of Creative and Cultural Industries
- Faculty of Technology
- Faculty of Business and Law
- Faculty of Humanities and Social Sciences
- Faculty of Science
- More than one Faculty

F

Fashion and Textiles (MA)	56
Film and Television (MSc)	57
Final Examination in Professional Practice (Part 3) Architecture	34
Finance (MSc)	33
Forensic Accounting (MSc)	33
Forensic Information Technology (MSc)	47
Forensic Psychology (MSc)	65
Forensic Psychology Practice (PgDip)	65

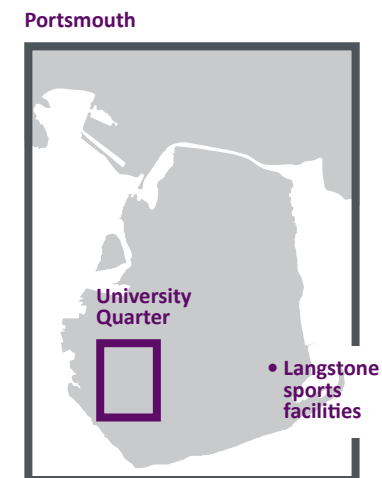
G

Geological and Environmental Hazards (MSc)	51
Geographical Information Systems (MSc)	58
Global (MBA)	37
Graphic Design (MA)	56

Course index alphabetical

- Key to course listings**
- Faculty of Creative and Cultural Industries
 - Faculty of Technology
 - Faculty of Business and Law
 - Faculty of Humanities and Social Sciences
 - Faculty of Science
 - More than one Faculty

H	I	M	P	S
<ul style="list-style-type: none">● Health Psychology (MSc) 65● Historic Building Conservation (MSc) 34● Human and Applied Physiology MSc 66● Human Resource Development (Top-up) (MSc) 38● Human Resource Development and Training Management (PgDip) 37● Human Resource Management (MSc) 38● Human Resource Management (PgDip) 38● Human Resource Management (Top-up) (MSc) 38	<ul style="list-style-type: none">● Illustration (MA) 56● Information Systems (MSc) 47● Innovation Management and Entrepreneurship (MSc) 38● Interior Design (MA) 34● International Business and Management (MSc) 38● International Criminal Justice (MSc) 48● International Development Studies (MSc) 60● International Development Studies (PgDip) 60● International Development Studies (PgCert) 60● International Finance and Banking (MSc) 33● International Human Resource Management (MSc) 39● International Professional Practice (Part 3) Architecture 34● International Relations (MA) 60	<ul style="list-style-type: none">● Marketing (MA) 39● Mechanical Engineering (MSc) 54● Media and Communication (MA) 64● Medical Biotechnology (MSc) 36● MRes 69● Music Technology (MSc) 50	<ul style="list-style-type: none">● Petroleum and Gas Engineering (MSc) 54● PGCE 11-16 42● PGCE Further Education and Teacher Training 42● Physical Activity, Exercise and Health (MSc) 67● Photography (MA) 56● Policing, Policy and Leadership (Degree Apprenticeship) (MSc) 50● Preparing for Practice Appraisal Dental 59● Prescribing and Therapeutics (PgCert) 59● Professional Design Practice (MA) 35● Project Management (MSc) 41● Psychology and Learning Disability (MSc) 65● Public Administration (MPA) 41● Public Administration (Degree Apprenticeship) (MPA) 41	<ul style="list-style-type: none">● Security Management (MSc) 48● Social Work (MSc) 59● Sport and Exercise Science Psychology (BPS Accredited) (MSc) 67● Sports Management (MSc) 67● Sports Performance (MSc) 67● Strategic Leadership (MBA) 39● Strategic Leadership (Degree Apprenticeship) (MBA) 39● Strategic Quality Management (MSc) 41● Sustainable Cities (MA) 35
L	N	O	Q	T
<ul style="list-style-type: none">● Law (LLM) 63● Leadership and Management (Top-up) (MSc) 39● Logistics and Supply Chain Management (MSc) 39		<ul style="list-style-type: none">● Occupational Health and Safety Management (Learning at Work) (MSc) 58● Occupational Health and Safety Management (Learning at Work) (PgCert) 58● Occupational Health, Safety and Environmental Management (Learning at Work) (MSc) 59		<ul style="list-style-type: none">● TESOL, Leadership and Management (MA) 62● Translation Studies (MA) 62
			V	
			<ul style="list-style-type: none">● Quantity Surveying (MSc) 35	<ul style="list-style-type: none">● Victimology (MSc) 48
			R	
			<ul style="list-style-type: none">● Real Estate Management (MSc) 35● Risk, Crisis and Resilience Management (MSc) 41	



How to find us

Portsmouth is a well-connected city with excellent transport links

Road

From London (A3(M)) and the east:
After the junction of the A3(M) and A27, continue east along the A27 until you reach junction 12 of the M27 (signposted M275 Portsmouth, continental ferries). Bear left here onto the M275. Follow signs to the University.

From Southampton and the west:
Follow the M27 past Fareham and at junction 12 follow signs for M275 Portsmouth, continental ferries. Follow signs to the University.

Rail

- London Waterloo (1hr 30 mins)
- Bristol (2hrs 25 mins)
- Gatwick Airport (1hr 25 mins)
- South Wales (3hrs 15 mins)

Coach services

Regular daily coach services to/from:

- London for countrywide connections
- Bristol for West Country, South Wales
- Birmingham
- Heathrow

Air

- Southampton Airport (30 minutes via M275/M27) for regular flights to destinations within the UK and Europe.
- Heathrow Airport (1hr 30 mins via A3(M)/M25) for international connections.
- Gatwick Airport (1hr 30 mins by road) for international connections.

Sea

Sailings to/from:

- Cherbourg
- Le Havre
- Caen/Ouistreham
- Bilbao
- St Malo
- Santander
- Guernsey
- Jersey

Frequent daily services to/from Isle of Wight:

- Catamaran (20 mins)
- Hovercraft (10 mins)
- Car/passenger ferry (40 mins)



Teaching
Excellence
Framework