

**N**

---

Marina Bijelic  
*Aqua Swarm*  
MA Textile Design, 2017  
Awarded the  
Vice-Chancellor's  
Commendation

MA  
/  
NUA





Welcome to Masters study at NUA	7
Pioneers, explorers & adventurers	8
Professional development	11
Our alumni	12
Postgraduate student experience	15
Academic community	16
Visiting professors	20
Norwich: our campus	25
Facilities at NUA	28
Norwich: your city	32
Our courses: structure and delivery	36
Course contents	39
Your next steps	88



# Welcome to Masters study at Norwich University of the Arts

---

**You'll see evidence all around of artists, designers, media producers, makers and innovators at work when you walk around the campus at Norwich University of the Arts. We are one of the great British art schools: a specialist arts, design and media university that draws on more than 170 years of history but with our focus on the future.**

Our graduates can be found in key positions at leading arts organisations, museums, galleries, fashion and textile houses, design and advertising agencies, UX and game development studios, film and media companies across the globe. There are Oscar nominees and BAFTA winners, and rising stars who are acclaimed and honoured across the creative industries: from award-winning fine artists to photographers and fashion designers.

We welcome diversity, so whatever your background, wherever you are from, you'll be welcomed as an innovator and aspiring leader in your chosen field.

Our postgraduate courses are practice-led and you'll be encouraged to develop your

creative ideas and ambition. Our approach to rigorous research will help you explore and reflect on the context of your work.

You'll join a community of creative practitioners and be supported by expert academic tuition and visiting specialists from the creative industries. You'll work in a stimulating and critically-engaged environment, with industry standard facilities, and with opportunities to attend discussions, symposia and exhibitions.

So read on about our work, courses and campus. And if you can, come and take a look! You'll be most welcome.

**Professor John Last**  
*Vice-Chancellor*

# Pioneers, explorers & adventurers

You may be looking to develop your creative practice or improve your job prospects. Perhaps you are looking for a career change?



Postgraduate students come to NUA from diverse backgrounds and with a range of hopes for their future. But they share a passion for creativity. They have within them a pioneering spirit and a determination to explore their creative practice.

What you'll find at NUA is a supportive environment and courses at the cutting-edge of their disciplines. Each postgraduate student pursues their own line of creative inquiry. But you'll be surrounded by an attentive audience of peers who are ready to challenge, ready to collaborate. Reflection and evaluation are essential to the development of your original thinking.

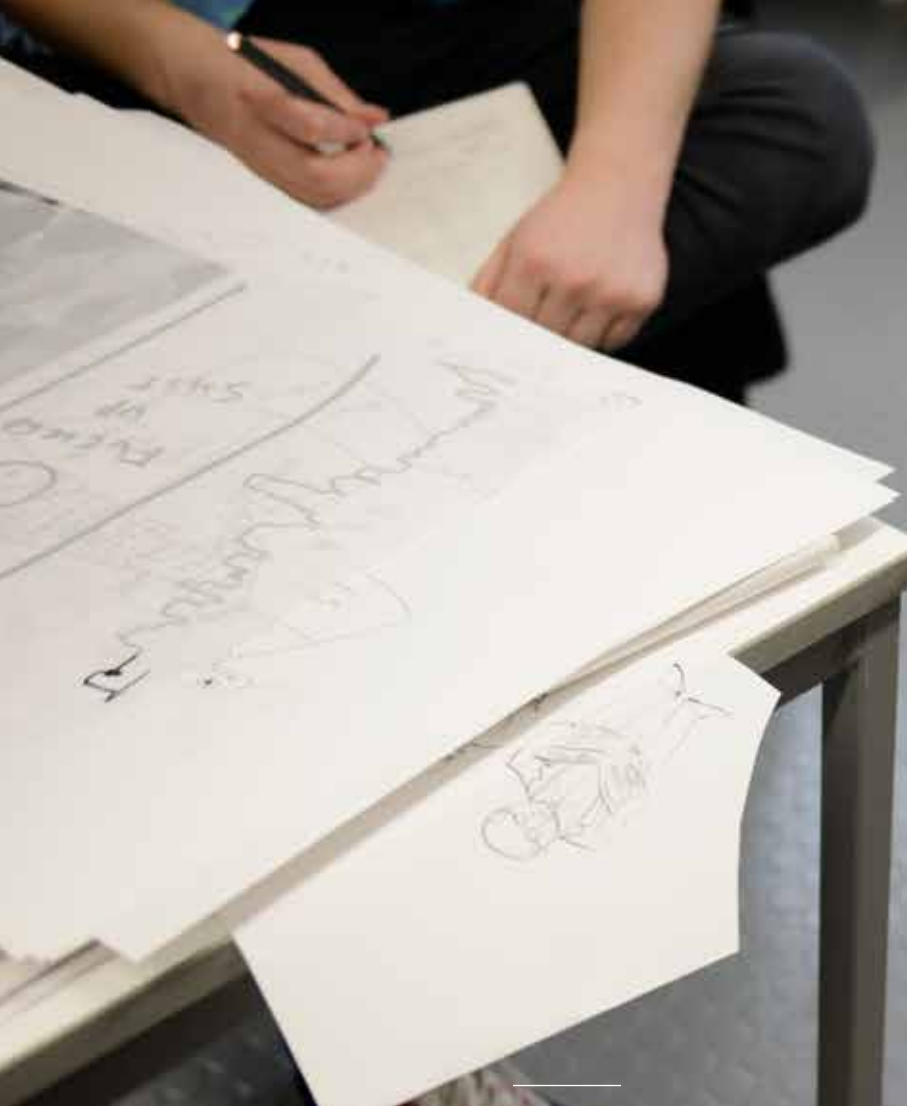
We see postgraduate study as more than an extension of undergraduate learning – it is a launch pad for entrepreneurship, academic research, intellectual inquiry and creative employment.

---

## Key characteristics

- Liberty to advance your creative practice in a vibrant and supportive environment
- Independent research and practice to develop your ideas and career
- Multi-disciplinary research, discussion and debate
- Professional networking opportunities to encourage collaboration.

**Marie Brennan** MIDI FRSA  
*Associate Dean and Head of Taught  
Postgraduate Awards*



# Professional development

**You'll find NUA postgraduates leading highly successful careers, becoming influential contributors to the creative and cultural industries.**

They hold key positions at leading arts organisations, museums, galleries, fashion and textile houses, design and advertising agencies, UX and game development studios, film and media companies across the globe. Postgraduate students are supported to develop entrepreneurial skills and to learn more about professional practice in their chosen field throughout the course, including an annual professional practice symposium.

## Academic research

A Masters degree is a springboard into an academic or research-based career for many students. All NUA postgraduate students can attend our research seminar programme, which brings national and international research and practice into the heart of our community. We encourage our students to work with industry to exchange knowledge and solutions.

## Graduate academic assistant opportunities

Students interested in academic careers could be eligible to apply for graduate academic assistant roles. These paid roles help interested postgraduate students gain experience of working in a higher education environment with the emphasis on enhancing student experience.

## Ideas Factory<sup>NUA</sup>

The University's Ideas Factory<sup>NUA</sup> is an incubation centre for creative digital businesses. We offer space, support and advice to digital creative companies – a place in the heart of Norwich's creative community for NUA graduates and postgraduate alumni to launch new businesses or freelance careers. The centre offers a dynamic work environment with like-minded businesses to build and grow your fledgling company.

“I've realised my practice is valuable across many industries, not just the creative world. I've learnt to communicate, solve problems, be accessible and think laterally as part of my practice. All of these are really transferable skills and have been useful in my professional life as well as my creative practice.”

Amy Fellows, MA Communication Design graduate  
Illustrator and Designer

# Our alumni

**NUA graduates work at leading art, design and media businesses throughout the world.**

Alan Adler  
*Cartoonist/Illustrator,  
The Times*

Brian Bolland  
*Comics artist including Judge  
Dredd, and graphic novel  
Batman: The Killing Joke*

Glenn Brown  
*Artist, Turner Prize nominee*

Phil Carter and Phil Wong  
*Founders, Carter Wong Design*

Keith Chapman  
*Creator of Bob the Builder  
and Roary the Racing Car*

Stuart Craig OBE  
*Art Director, triple Oscar  
winner and Production  
Designer on all eight  
Harry Potter films*

Sophia George  
*First V&A Games Designer  
in Residence and  
BAFTA Breakthrough Brit*

Susan Gunn  
*Artist, winner of the Sovereign  
European Art Prize*

Bernard Meadows  
*British Modernist Sculptor  
Former Professor of Sculpture  
at the Royal College of Art*

Bradley Morgan Johnson  
*BAFTA scholar, artist and  
digital sculptor with credits  
including Star Trek: Discovery*

Sir Alfred Munnings  
*Painter and former President  
of the Royal Academy of Art*

Colin Self  
*Pop Artist featured in  
the Tate collection*

Jim Sutherland  
*Founder, hat-trick design*

Genevieve Webster  
*Author and Illustrator,  
co-creator of Rastamouse*

Brian Bolland  
*Batman:  
The Killing Joke*





---

“The support across the varied disciplines was an incredibly distinctive and positive part of my University experience. One day I might be receiving extensive 1:1 support coding an interactive art piece, the next day fabricating part of a video installation in the sculpture workshop.”

Henry Driver, *MA Fine Art graduate*  
*Artist*

---

## Postgraduate student experience

---

**Creative production through independent learning: this is the ethos that shapes all of NUA's MA courses. You'll be encouraged to explore your ideas and deepen your creative practice.**

Postgraduate students are supported with a variety of teaching and learning methods: from group tutorials, live briefs and project proposals.

But one of the defining characteristics of NUA's Masters programme is working with creatives from other disciplines – mirroring what postgraduates find in the workplace. Peer learning and collaborative practice is at the forefront of what we do.



# Academic community

---

**Our academic staff will support, encourage and challenge you to create your best work. They are also actively engaged in contemporary practice and/or theory for their specialism and frequently lead or contribute to external projects.**

We work with universities, museums, galleries and creative and cultural industries throughout the world to develop innovative research.

Our international activities explore new ways in which art, design and media practice, interpretation and curation contribute to knowledge and understanding of contemporary culture, society and quality of life.

Academic staff share this work with the MA community through seminars and research presentations.

To read biographies of our academic staff visit [www.nua.ac.uk/about/staff](http://www.nua.ac.uk/about/staff)

---

“The support of the academic staff, technicians and my peers was invaluable to my creative practice.”

James Quinn  
*MA Fine Art graduate  
Artist*

---

# A global reputation

---

**NUA has an international reputation for research in Art and Design Interpretation and Curation, and Moving Image and Sound.**

# 90%

of our research was judged to be either

*‘world-leading’ or  
‘internationally excellent’*

in the terms of its impact on the broader cultural and economic landscape in the Research Excellence Framework 2014.

**nahemi** national association for  
higher education in the  
moving image

National Association for Higher  
Education in the Moving Image  
*elected Professor of Animation Education  
Suzie Hanna as chair to the Executive.*

---

**SOUTHBANK  
CENTRE**

**HAYWARD TOURING**

British Art Show 8

*NUA was the lead partner bringing  
this Hayward Touring show to  
Norwich. Curated at East Gallery<sup>NUA</sup>  
by Dr Caroline Fisher.*

---

**ATypI**

ASSOCIATION TYPOGRAPHIQUE  
INTERNATIONALE

Association Typographique  
Internationale, Reykjavik

*invited Communication Design  
Subject Leader Dr Rob Hillier to  
present his research findings for  
Sylexiad, his typeface that can help  
those with dyslexia.*

# Visiting professors

---

**Visiting professors from a range of disciplines offer valuable insights on creative practice, industry trends and have included:**

Graham Creelman OBE  
*Visiting Professor in Media*

Filmmaker, broadcaster and media executive. An extensive career in broadcast journalism with the BBC and ITV encompassed news and political programming including producer and director credits on a range of documentaries including the award-winning *Survival* series – the UK's most successful documentary for overseas sales.

Andy Earl  
*Visiting Professor in Photography*

Renowned international portraiture photographer focused on the music industry. His work has featured on over 120 album covers and he's worked with Johnny Cash, Prince, Morrissey and Annie Lennox. He also works in moving image and created a music video for The Rolling Stones.

Anthony Hudson  
*Visiting Professor in Architecture*

Founded Hudson Architects in 2002. RIBA award-winning buildings from the practice include Salvation Army Citadel, Chelmsford and OPEN, Norwich. Anthony has a keen interest in the positive influence design can have on society.

Gina Jackson  
*Visiting Professor in Games*

Began working in games in 1992 producing titles for publishers including Ocean Software. She later worked at Kuju and signed console deals with Nintendo and Konami. As Head of Games at Imaginarium she successfully took Eidos' catalogue online through mobile and digital distribution for both console and PC including *Tomb Raider* and *Championship Manager* mobile games.



---

*Planet of the Apes:*  
*Last Frontier* published  
by Imaginarium

**PLANET  
OF THE  
APES**  
LAST FRONTIER



Sainsbury Centre  
for Visual Arts

Nichola Johnson OBE  
*Visiting Professor in Curation*  
Chair of the East Anglian Art Fund and a Trustee of the National Trust, Pallant House Gallery, Norwich Cathedral Fabric Committee, Norfolk and Norwich Festival, York Museums Trust, Dulwich Picture Gallery and the Ruskin Foundation. Former Director of the Sainsbury Centre for Visual Arts from 1994-2010, where she also established and directed both a postgraduate Museum Studies programme and the Museum Leadership Programme.

Sean Perkins  
*Visiting Professor in Graphics*  
Founded North in 1995, it quickly gained a reputation as one of London's leading groups for clear, modernist communication design and has maintained this profile to the present day.

Graham Rawle  
*Visiting Professor in Design*  
Graham's collage methodology developed from illustration and installation to literature

and, more recently, film. Notable works include his book *Woman's World*, a novel collaged from 40,000 fragments of text cut from the pages of vintage women's magazines, and *Lost Consonants*, a series which appeared weekly in *The Guardian* for 15 years and in eight books.

Jim Sutherland  
*Visiting Professor in Graphics*  
Co-founder of hat-trick design, Jim has worked on branding for the Natural History Museum, signage for the Salvation Army, stamps for the Royal Mail and the Land Securities roster.

Adrian Wootton  
*Visiting Professor in Film and Moving Image*  
Served as Chief Executive of both the British Film Commission and Film London. He is a member of BAFTA and the European Film Academy. He is a broadsheet writer, radio broadcaster, festival director, book editor and biographer.



# Norwich: our campus

---

**Take a tour of our campus and you'll find industry standard tools, studios and creative spaces in 10 buildings nestled between the cafes, bars and independent galleries and shops of Norwich's cultural quarter.**

You'll see medieval buildings with 21st century media labs, and revitalised Victorian factory buildings fitted out with state-of-the-art technology.

Norwich is a city where inspiration can be found on every corner – and NUA's buildings are a launch pad to explore your ideas.

During your postgraduate studies at NUA you'll work in our art, design and media studios as well as working in our dedicated fully equipped workshops, designed to help you build specialist knowledge and flourish in your chosen discipline.

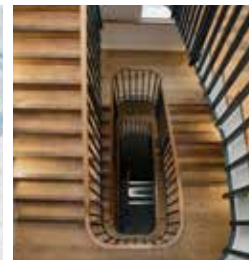
And you'll have access to quality teaching spaces, which make the most of our buildings' natural light thanks to high ceilings and open plan layouts, encouraging collaboration and promoting a strong sense of community.




---

Norwich is a city where inspiration can be found on every corner – and NUA's buildings are a launch pad to explore your ideas.

---



# Facilities at NUA

---

## Ideas Factory<sup>NUA</sup>

Ideas Factory<sup>NUA</sup> is the University's incubation space for creative and digital start-ups. Its contemporary offices are licensed to a number of businesses launched by NUA graduates, including production companies, design agencies, writers and architects.

The building also hosts the University's digital UX Lab, as well as NUA's consultancy, which provides opportunities for students to work on real world commercial projects with local, national and international organisations.

A dedicated Business and Employability team, who deliver a specialist creative careers service and work with current students to develop skills sought by employers, also call the Ideas Factory<sup>NUA</sup> home.

For more information about Ideas Factory<sup>NUA</sup>  
[www.nua.ac.uk/ideasfactory](http://www.nua.ac.uk/ideasfactory)

“After you graduate it can be easy to lose your creative network and the people who push you forward. By joining a space like the Ideas Factory<sup>NUA</sup> you do not end up on your own. Creativity doesn't thrive in isolation, but it can with a community around you.”

**Jeanette Bolton-Martin**  
*MA Photography graduate  
and Ideas Factory<sup>NUA</sup> resident*



### East Gallery<sup>NUA</sup>

East Gallery<sup>NUA</sup> is the University's city centre gallery space. Exhibitions are originated by NUA or stem from collaborations with national and international partners such as Jerwood Charitable Foundation, Hayward Gallery and Arts Council England.

Recent exhibitions include *British Art Show 8*, the UK's largest touring show of contemporary art; photography by surrealist Claude Cahun; *Mutator VR*, a virtual reality installation exhibition by computer artist Professor William Latham; *Jerwood Drawing Prize 2017*, as well as exhibitions of work by NUA graduates.

East Gallery<sup>NUA</sup> is a valuable resource for students, as well as providing opportunities to work as Gallery Assistants.

For more information about East Gallery<sup>NUA</sup>  
[www.nua.ac.uk/thegallery](http://www.nua.ac.uk/thegallery)

---

### NUA Library

The largest specialist art, design and media collection in the East of England, including 32,000 books, 1,300 journal subscriptions and 3,000 DVDs.





# Norwich: your city

**Norwich sparks with creativity. You'll encounter a flourishing music and cultural scene in one of the UK's 'greenest' cities.**

An accessible and easily walkable city centre houses six theatres, a permanent six-day market, the vintage and independent shops of the Norwich Lanes, two shopping malls and four cinemas. But don't be fooled by the City's medieval architecture; Norwich has a history of rebellion and radicalism, of innovators, creators and makers.



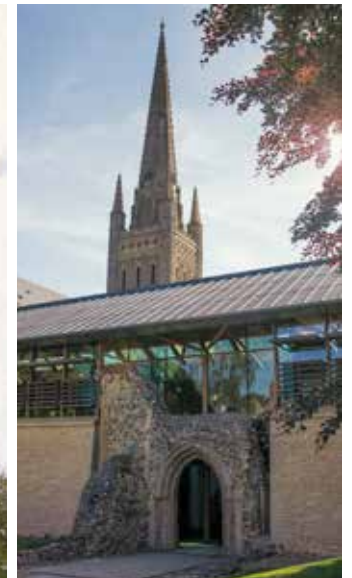
UNESCO named Norwich as England's first City of Literature in 2012, recognising the City's celebrated literary tradition, spanning Booker and Nobel prize winners. Norwich is also a thriving hub of creative business and enterprise; home to one of the UK's most highly-concentrated and diversified creative industry clusters (*The Geography of Creativity in the UK*, Nesta 2016).

---

It is little wonder Norwich has been voted one of the best small cities in the world. The City is one of the UK's safest with a warm and welcoming attitude to its student population.

---

And beyond the city limits, Norfolk is famed for its 90-mile coastline of big skies and stunning beaches. The tranquil waterways of the Norfolk Broads National Park span 120 miles of rivers and lakes – an endless source of inspiration.



# Our courses: structure and delivery

---

**Our approach to postgraduate study is designed to allow for collaboration across our programmes. You'll learn to specialise and to work with others on creative projects and research – whether you are studying full-time or part-time.**

Masters courses at NUA can be studied either full-time over 42 weeks or part-time over 84 weeks.

Teaching is broken down into three teaching blocks per year, each comprising 14 weeks.

All full-time and first year part-time students participate in the Research into Practice and Award Specific Unit 2 at the same time, with opportunities to collaborate and discuss ideas and approaches.

Second year part-time students will have similar opportunities in Award Specific Unit 1 and the Masters Project, and will take part in the final exhibition together.

While there is no dissertation, students write evaluations and extended reflective journals for every unit.

## Your idea, your practice, your discipline

---

### Research into Practice

Understand practice-based research methods and engage in critical research around your practice. This unit will help you combine your practice with academic research.

---

### Award specific units

Each course features two units where subject specialist issues are explored, promoting the acquisition of new knowledge and skills.

---

### Self-negotiated study

Design and conduct an independent project within a given timescale. This unit will help prepare you for the Masters Project and encourages you to engage with creative industries and practitioners while you experiment and try new ways of working.

---

### Masters Project

You'll undertake a major independent project specific to your course and chosen specialism. The Masters degree culminates in a public exhibition of work in the final September of study.

# Our courses: structure and delivery

---

## Full-time

<b>Teaching block 1</b>	<b>Teaching block 2</b>	<b>Teaching block 3</b>
Award Specific Unit Research into Practice	Award Specific Unit Self-negotiated Study	Masters Project

---

## Part-time route: Year 1

<b>Teaching block 1</b>	<b>Teaching block 2</b>	<b>Teaching block 3</b>
Research into Practice	Award Specific Unit	Self-negotiated study

---

## Part-time route: Year 2

<b>Teaching block 1</b>	<b>Teaching block 2</b>	<b>Teaching block 3</b>
Award Specific Unit	Masters Project	Masters Project

---

## Core units

<b>Research into Practice</b>	30 credits
<b>Self-negotiated study</b>	30 credits
<b>Masters Project</b>	60 credits

---

## Subject specific units

<b>Award specific 1</b>	30 credits
<b>Award specific 2</b>	30 credits

# Course contents

---

MA Communication Design	40
MA Curation	46
MA Fashion	52
MA Fine Art	58
MA Games	64
MA Moving Image and Sound	70
MA Photography	76
MA Textile Design	82

# MA Communication Design

**The role of design in shaping our understanding of issues, our environment and each other is central to the MA Communication Design course.**

The course is practice-led and spans graphic design, graphic communication, illustration, information design, interactive communication, multimedia and typography.

There will be opportunities to stretch your skills and ambition: from moving image and sound to questions of brand management and publishing.

You'll be encouraged to explore responsible, collaborative and international design culture as you develop your own voice and practice through experimentation.

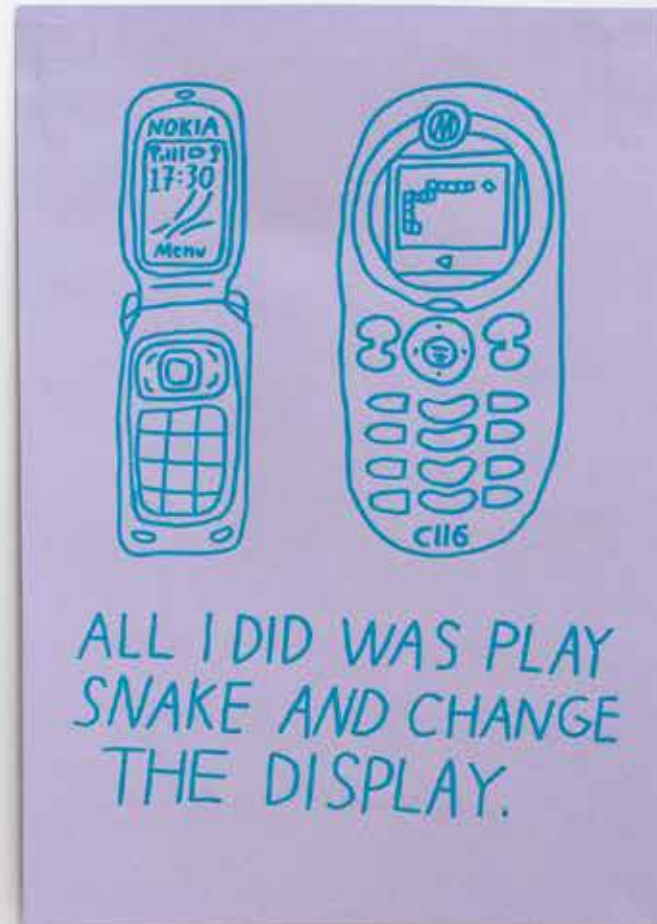
The course offers opportunities to critically examine design and communication issues such as sustainability, new technology, new audiences and markets, inclusivity and ethics.

Design ideas are also researched, tested and communicated in professional and 'real world' contexts – making use of industry standard resources and supported by expert tuition.

NUA is a centre of design expertise with students and graduates winning competitions of national and international importance, including coveted D&AD Pencils and the RSA Howarth Award. You'll find NUA's Communication Design graduates leading and working at global agencies.

**Dr Rob Hillier**  
*Subject Leader/MA Core Tutor*

Joskaudé Pakalkaité  
*Bonding Good*





Tracy Satchwill  
*Hysterical Females*

Kazz Morohashi  
*Walkies*

James Ward  
*51 Grids*

Ben Taub  
*Freebee, Awarded  
D&AD 'New Blood'  
Yellow Pencil*



## Facilities

**MA Communication Design students make extensive use of the digital design studios and are supported by workshop technicians.**

### Design Studios

Open plan studios offer spaces for collaborative working, group critique sessions and individual project work, with access to professional creative software on iMacs.

### Digital Print Workshop

The workshop can produce prints from A4 to 1.5m wide on a variety of media. Access to wide format, CD printing and laser printing. You'll have on-hand support from a team of workshop technicians.

### Media Resource Centre

A central resource for digital cameras, tripods, 35mm DSLRs, 35mm film cameras and lighting equipment.

### Laser Cutter

Large-bed cutter for card, board and acrylic materials with associated digital design hardware and software.

### Print Making Workshop

For silkscreen, etching, lino-cut and relief printing, monoprinting and collographs.

# What are graduates doing now?

---

“I have been working on publishing and branding projects and lately getting involved in web design. The creative practice in the industry is so much like what I encountered at NUA. Research was the spine and justification follows – uncompromisingly making your work convincing and engaging.”

Lucas Yeung  
*Designer iPulse Design,  
Hong Kong*

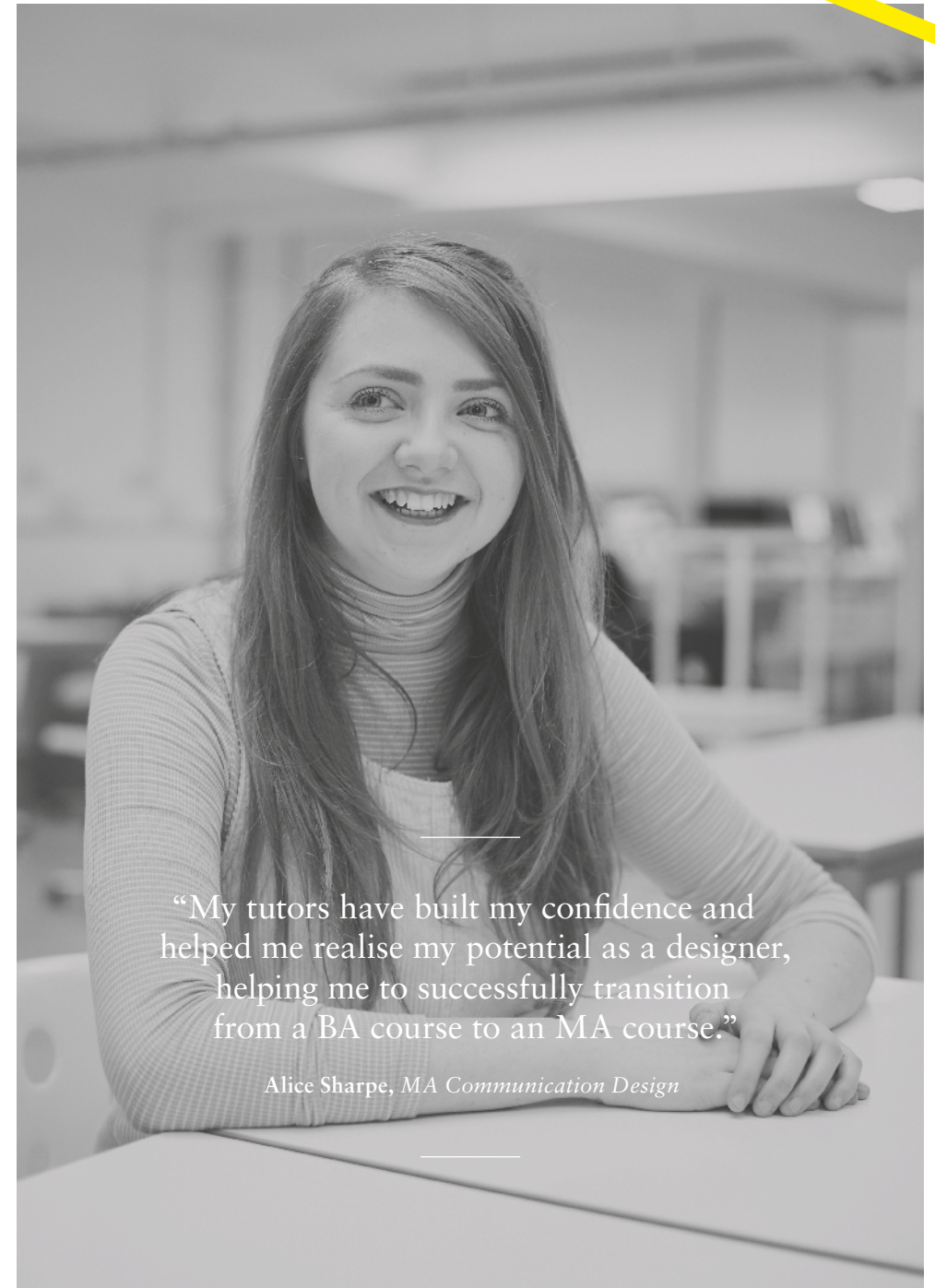
---

## Graduates work in a broad range of careers including:

- Graphic/Web Design
- Art Directing
- Brand Strategy/Design
- Desktop Publishing
- Design Consultancy
- Editorial Design
- Marketing
- Packaging Design
- Advertising
- Studio Management
- Teaching/Lecturing
- Research/PhD Study

“The course has provided a valuable range of methods to develop my professional practice, enabling me to further articulate and evaluate my work ready for the commercial world.”

Tracy Satchwill  
*Multi-media Artist*



“My tutors have built my confidence and helped me realise my potential as a designer, helping me to successfully transition from a BA course to an MA course.”

Alice Sharpe, *MA Communication Design*

---

# MA Curation

**Individual practice-based projects and hands-on curatorial experience are at the heart of the MA Curation course at Norwich University of the Arts.**

The course explores the idea of “an exhibition” in its broadest sense across the field of contemporary art. You’ll engage with gallery-based exhibitions and projects in non-traditional venues, site-specific interventions and public art projects. You’ll consider the possibilities offered by a range of platforms: from the more traditional museum collections, museology and archives, through to virtual and interactive methods.

MA Curation acknowledges the emergence of the artist-curator alongside more traditional routes to curatorial practice. The course will help you to develop self-initiated curatorial projects, where you’ll be encouraged to innovate; work in the public domain and explore how to develop new audiences.

NUA provides a strong professional context in which to study curatorial practice, with

established links with the Arts Council Collection, Hayward Touring, Tate, Norwich Castle Museum & Gallery, as well as local, regional and national galleries and museums. The University’s own gallery, East Gallery<sup>NUA</sup>, is an important touring venue for national and international exhibitions and has helped to cement NUA’s reputation for high quality curatorial practice. East Gallery<sup>NUA</sup> hosted the *British Art Show 8* in 2016 and the prestigious *EASTinternational* between 1991 and 2009.

A training programme delivered by the gallery as part of your MA programme of study will provide you with the opportunity to develop your professional practice – and a mentoring scheme with curators will help provide opportunities to engage with industry professionals.

**Dr Caroline Fisher**  
*Subject Leader*

Marlene Haring  
*Because Every Hair  
is Different* on  
display in *I thought  
I was the audience  
and then I looked  
at you* exhibition  
by MA Curation  
students 2012







Oliver Payne  
*Perpetua 2*  
Curated by  
Megan Jayne Ryder

## Facilities

**MA Curation students make extensive use of East Gallery<sup>NUA</sup> and engage with other prominent spaces in the City including the Norwich Castle Museum & Art Gallery.**

### East Gallery<sup>NUA</sup>

The campus-based public art gallery offers students first-hand insight into professional curatorial practice.

### The University Archive

Housing an extensive collection of exhibition materials and publications, including the NUA East Archive.

### Software Inductions

Optional software inductions available to all students introduce you to a wide range of creative possibilities and output options.

### Media Resource Centre

For digital cameras, tripods, 35mm DSLRs, 35mm film cameras and lighting equipment.

# What are graduates doing now?

---

“I felt able to explore my own curatorial interests in a supportive and enthusiastic environment and encouraged to think beyond the course to the next stage of my professional development. Studying alongside the MA Fine Art students has enabled me to understand issues in contemporary curation in a very practical way and working with external partners, such as the Arts Council and the Sainsbury Centre for Visual Arts has provided me with invaluable exposure to curatorial practice at the highest level.”

**Christine Lewis**  
*Curator and Gallery  
Coordinator, Babylon Gallery*

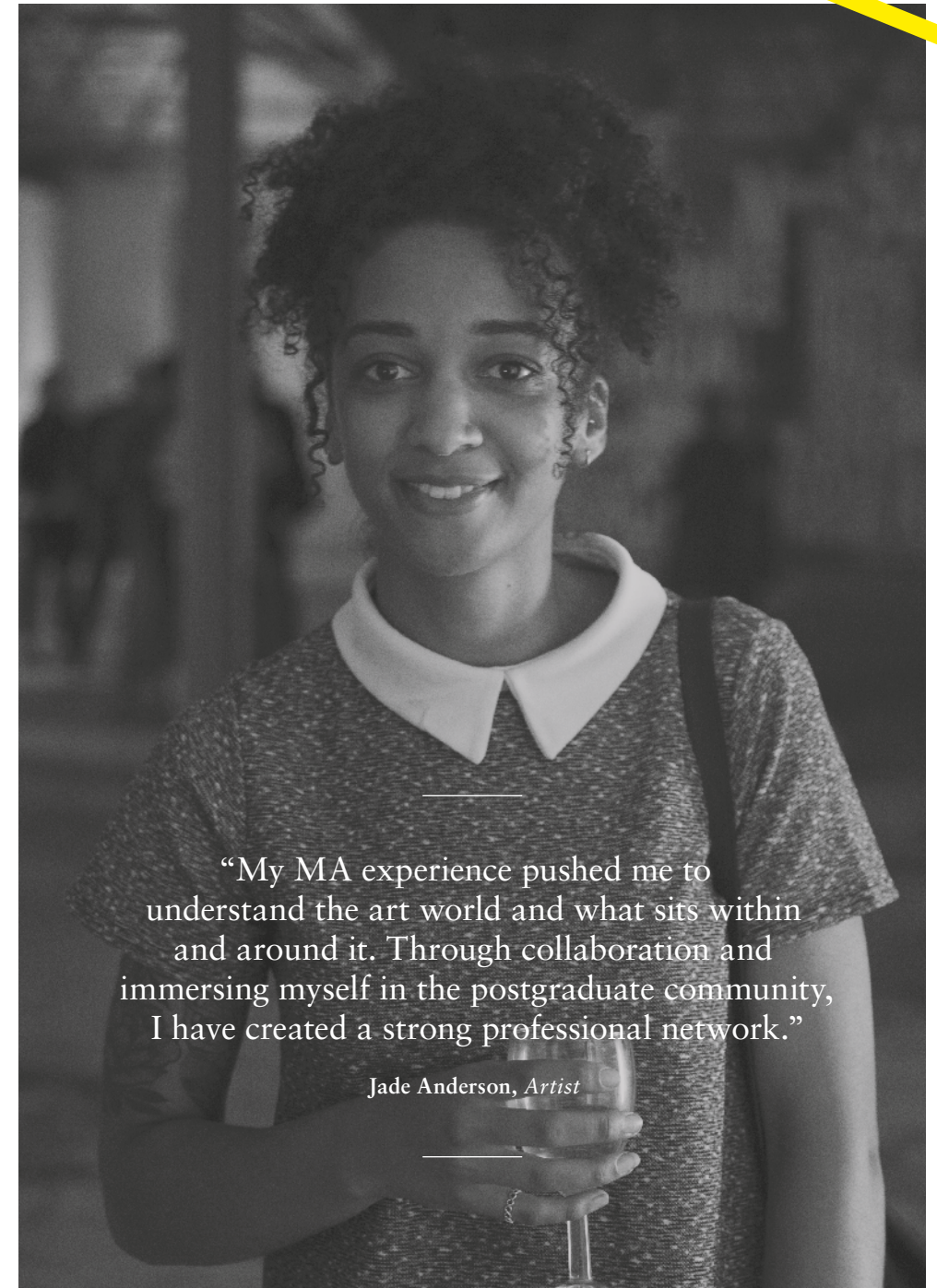
---

## Graduates work in a broad range of careers including:

- Curator
- Exhibition Organisation
- Gallery Management
- Arts Direction
- Museology
- Programme Management
- Arts Administration
- Teaching/Lecturing
- Research/PhD Study

“I loved NUA since first coming to the Open Day. There was a big emphasis on practical work and this really appealed to me. During the course I curated three shows in independent galleries in London. The course also prepared me for working collaboratively with other students, institutions and galleries.”

**Alice Lee**  
*Artist and Curator*



“My MA experience pushed me to understand the art world and what sits within and around it. Through collaboration and immersing myself in the postgraduate community, I have created a strong professional network.”

**Jade Anderson, Artist**

# MA Fashion

**Develop your signature style and explore the conceptual contexts of your work on the MA Fashion course.**

Students test the boundaries of what fashion is in the 21st century to develop their own personal and professional philosophy.

Your compelling creative voice will emerge through engagement with materials, processes and issues.

Your practice will embrace digital, technological and cultural innovation as you develop a clear understanding of promotion and platforms to showcase your work.

The course includes formal taught sessions, independent research and collaborative learning and you'll join a thriving community of

designers, researchers and visiting industry guests to support your professional and creative development.

Studio technicians will further support your exploration of bespoke tailoring, experimental cutting and draping methods, the traditions and craft of haute couture, hand and machine finishing techniques and the use of contemporary technologies.

**Ike Rust**  
*Subject Leader*

---

Amy Ollett  
*Choreology Design*



---

Hannamari Markkula  
*Zero-waste project*

Uzair Khan  
*Collection: Ways of  
Seeing, 2017*

---

## Facilities

---

**MA Fashion students work in light, open plan riverside fashion studios.**

### Fashion Workshop

Industrial and domestic sewing machines, industrial presses, buttonholer, fusing equipment, professional full-size and quarter scale mannequins.

### Laser Cutter

Large-bed cutter for card, board and acrylic materials with associated digital design hardware and software.

### Drawing Studio

Drawing and life drawing classes in a well-equipped naturally lit environment. Digital options include Wacom Intuos tablets and a digital microscope.

### General Technical Sessions

Optional software inductions available to all students introduce you to a wide range of creative possibilities and output options.

### Media Resource Centre

A central resource for digital cameras, tripods, 35mm DSLRs, 35mm film cameras and lighting equipment.

## What are graduates doing now?

---

“The most rewarding aspect of my studies was the support I had from my tutor and the knowledgeable fashion technicians. They continuously supported my vision helping me to evolve into the designer I wanted to be, as well as challenging me to find creative design solutions and refine my craft. Before I knew it I had the technical skillset I needed to allow my designs to take shape.”

**Amy Ollett**

*Artist and Designer, awarded the Dubery and Brogden EAAF Scholarship 2016/17. Work published in Hunger, The Fashionable Lamppoon, KALTBLUT and Blanc*

---

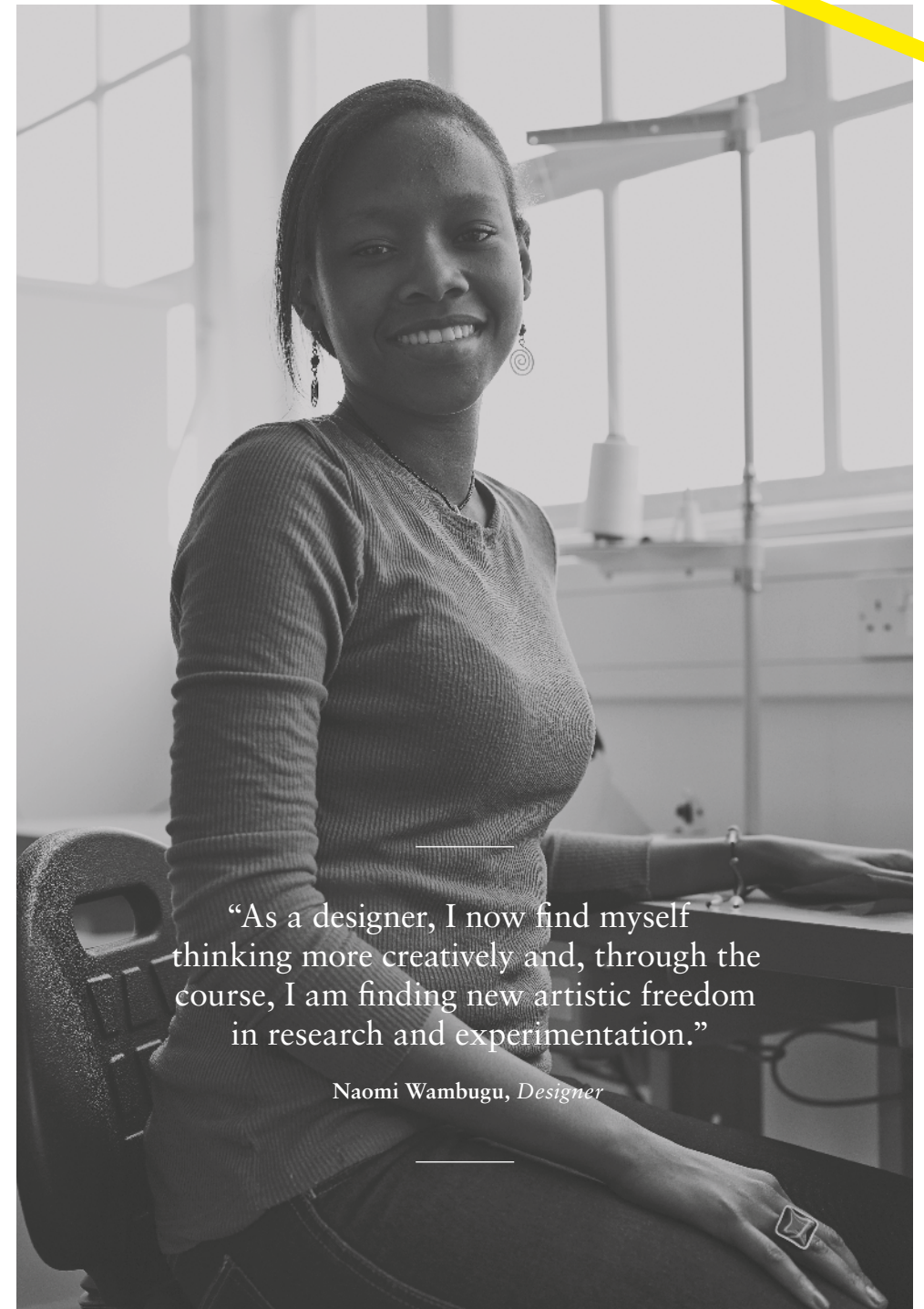
### Graduates work in a broad range of careers including:

- Bespoke Tailoring
- Freelance Design
- Costume Design
- Design Consultancy
- Design and Choreography
- Fabric Technology
- Pattern Cutting
- Buying
- Teaching/Lecturing
- Research/PhD Study

“I was attracted to NUA because of the facilities and came all the way from Malaysia. The course is so hands-on. I met hardworking, dedicated tutors. I now work for a fashion house in Kuala Lumpur and am starting my own menswear line.”

**Swee Ling Yew**

*Assistant Designer, Beatrice Looi, Malaysia*



“As a designer, I now find myself thinking more creatively and, through the course, I am finding new artistic freedom in research and experimentation.”

**Naomi Wambugu, Designer**

# MA Fine Art

**A supportive environment that encourages artistic innovation, exploration and debate awaits on the MA Fine Art course.**

Students accelerate their practice as artists and explore their role in society – testing their ideas against contemporary issues and critical debates.

You may elect to specialise or combine areas including painting, drawing, printmaking, ceramics and sculpture, to spatial and time based practice. You'll be encouraged to master the skills appropriate to your artistic interests and supported in the development of wider expertise: from exhibition and presentation to ethics and audience awareness.

Working alongside students from other MA creative courses, you'll join a community of artists and makers and visiting artists as part of a stimulating and active research environment.

NUA has a long and established reputation as one of the leading providers of fine art education in the UK – and our students and graduates have been selected for high profile exhibitions and prizes, including Bloomberg New Contemporaries, MOSTYN Open, Aesthetica Art Prize, Signature Art Prize, Jerwood Drawing Prize, and the Deutsche Bank Awards for Creative Enterprise.

Strong links with local, regional and national galleries, museums and festivals provide platforms for dialogue around contemporary practice, supported by visiting artists and the Fine Art Lecture Series. And East Gallery<sup>NUA</sup> provides a showcase for high quality public exhibitions that augment the MA Fine Art experience.

**Desmond Brett**  
*Subject Leader*

Jessica Burgess  
*Apollinaire Orange*





Jessica Burgess  
*Painting called Madison*

Elizabeth Monahan  
*And I her Son and Blue*

Lauren Brunt  
*1642*

Jayne Bushell  
*mnémè*



## Facilities

**MA Fine Art studios are based in the St Georges building where high ceilings and windows provide the perfect creative environment. Full-time technicians manage specialist workshops.**

### 3D Workshop

Sculpture workshop, foundry, mould-making, wood and plastics fabrication.

### Print Making Workshop

For silkscreen, etching, lino-cut and relief printing, monoprinting and collographs.

### Drawing Studio

Drawing and life drawing classes in a well-equipped naturally lit environment. Digital options include Wacom Intuos tablets and a digital microscope.

### General Technical Sessions

Optional software inductions available to all students introduce you to a wide range of creative possibilities and output options.

### The University Archive

The University Archive houses an extensive collection of exhibition materials and publications, including the NUA East Archive.

### Media Resource Centre

A central resource for digital cameras, tripods, 35mm DSLRs, 35mm film cameras and lighting equipment.

## What are graduates doing now?

---

“At MA level you are more independent and have more freedom. The course is mostly practical but this is supported by essays and a reflective journal which provides the context. To work in contemporary practice you need to understand the context.”

**Verónica Domingo-Alonso**  
*Artist and Curator, Zumarraga and Urretxu Open winner and Itzal Aktiboa Prize winner*

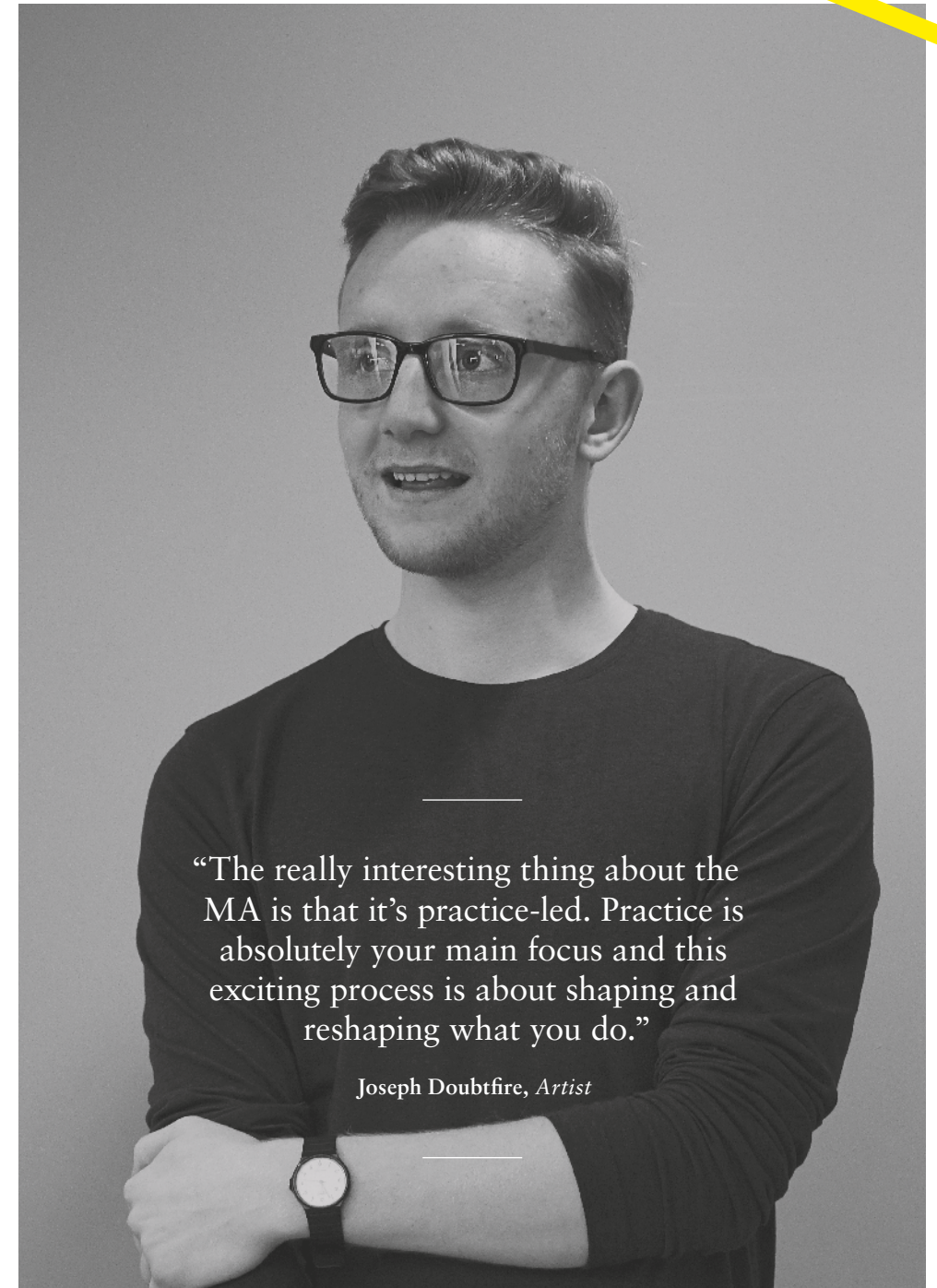
“I chose the course because of its unique combination of equipment, space, expertise and critical dialogue. Since graduating I have exhibited in Berlin, Toronto, Montreal and London and have undertaken a number of residencies and commissions, including working with Red Bull Studios, London and alt.barbican.”

**Henry Driver**  
*Artist*

---

### Graduates work in a broad range of careers including:

- Practising Artist
- Artist-Curator
- Exhibition Organisation
- Arts Administration
- Teaching/Lecturing
- Research/PhD Study



---

“The really interesting thing about the MA is that it’s practice-led. Practice is absolutely your main focus and this exciting process is about shaping and reshaping what you do.”

**Joseph Doubtfire, Artist**

---



# MA Games

**Creative flair and technical skill combine on MA Games at NUA – the UK’s Best Educational Institution, according to the 2017 TIGA Games Industry Awards.**

You’ll collaborate with like-minded peers and be guided by subject specialist staff as well as interdisciplinary sessions with students across all of our MA courses as you work towards your ambition of a career in the games industry or wider creative sector.

The course will accelerate the development of your existing skillset against the backdrop of the demands and rigours of industry best practice.

You’ll be invited to specialise in one of three areas and a clearly-defined path of study, such as:

**Concept Art  
(and Sequential Narrative)  
Asset Production  
Indie Development**

Alongside broader research into the social, technical, economic and cultural context in which games are produced.

Whatever your choice, your creativity will be informed by theoretical, cultural and historical research – and powered by cutting-edge technology and software.

NUA Games graduates include three BAFTA-winning games designers, the V&A’s first Games Designer in Residence, six teams of Dare to Be Digital finalists and employees at Sony Interactive Entertainment Europe, Foundry 42, Rebellion, Crytek, Frontier Developments, Splash Damage, Ubisoft, Rockstar Games, and many more.

**Mark Wickham**  
*Subject Leader*

Neal Buster  
Troughton  
*Hive Heroes*





---

Sam Betlam  
*Game concept art*

Nathalie Hammond  
*Connected (Reclaiming  
Conservation)*



---

## Facilities

---

### Media Lab 1

For digital 3D production. Software includes the ZBrush, Silo, Autodesk Entertainment Creation Suite, Corel Painter and Adobe Creative Suite.

### Media Labs 2 and 4

For video capture, edit, production and 2D animation: Adobe Premiere Pro, Maya and Adobe Creative Suite.

### Technical Workshops

You'll have on-hand support from a team of dedicated workshop technicians. During the course, inductions and training for workshops, equipment and software that is identified as appropriate to your practice will be provided.

### Digital User Research Lab

User Experience testing facility equipped with specialist Morae tracking software and commonly used games platforms, including bespoke Sony testing equipment.

### High Speed Internet

The University's network provides an extremely reliable, high speed and high bandwidth internet connection, enabling national and international communication and collaboration.

# What are graduates doing now?

---

“My current role at Bossa Studios is great because it’s challenging and I learn new things every day. I constantly have to review my work and push myself to be better. I’m working on something different week by week so I never feel like I’m stagnating. My career highlight so far is going to two BAFTA Games Awards ceremonies, being nominated for three BAFTAs and winning one of them.”

**Andrew Green**  
*Senior Technical Artist,  
Bossa Studios*

---

## Graduates work in a broad range of careers including:

- Games Art
- Games Design
- Concept Art
- Creative Direction
- External Production
- Project Management
- Indie Games Development
- Teaching/Lecturing
- Research/PhD Study
- Illustration

“Since graduating I’ve got involved with a start-up company in San Francisco developing a social game that brings mobile gameplay to real-time events like sports, reality shows and awards ceremonies. I was responsible for the overall design and direction of the game’s UX/interface, navigation, flow, art, assets, colour styling, etc.”

**Luke Burroughs**  
*UX/UI & Visual Designer,  
Foolproof UK*



“The focus on both independent and collaborative work means that you get the opportunity to hone your personal craft, but also develop your understanding of team pipelines and established industry practices.”

**Joe Neeves**, *Concept Artist*

---

# MA Moving Image and Sound

**Accelerate the development of your practice, refine your technical skills and explore the cultural and historical context of your work on the MA Moving Image and Sound course, accredited by Creative Skillset.**

Students are encouraged to challenge their emerging audio-visual practice and strive for originality through experimentation with concepts, issues and materials relating to moving image and/or sound design.

You'll join a community of practitioners and researchers with diverse specialisms and will have opportunities to collaborate as well as work individually.

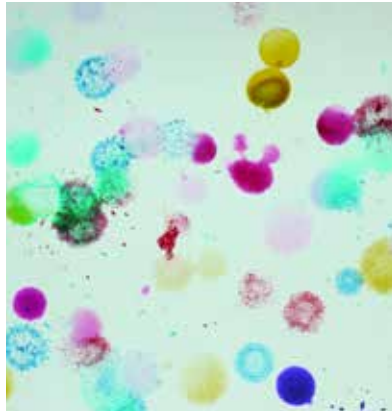
Depending on your specialism, you'll be able to engage with a range of audio-visual approaches: from 2D Digital, CGI and stop motion

animation film and moving image production; motion graphics; scripting and narrative; pre-production and post-production skills and techniques, and sound design.

Through intensive study and comprehensive technical workshops, you'll refine the practical and conceptual skills necessary to create original and innovative work, to a high professional standard.

Liam Wells  
*Subject Leader*





Ranieri Spina  
*Landscape (Smith & Spina, animation)*

Steven Eyles  
*To the Moon and Back*

Ranieri Spina  
*mark/it*

Neil James Earl  
*Installation*



## Facilities

**Working in the Media Labs you'll make regular use of purpose-built editing facilities and sound studios. A team of technicians support you with current industry spec hardware and software.**

### Sound Studio

Sound production/edit rooms and recording studio equipped with Logic Studio software.

### Media Lab 1

For digital 3D production. Software includes the ZBrush, Silo, Autodesk Entertainment Creation Suite, Corel Painter and Adobe Creative Suite.

### Media Labs 2 and 4

For video capture, edit, production and 2D animation: Adobe Premiere Pro, Maya and Adobe Creative Suite.

### General Technical Sessions

Optional software inductions available to all students introduce you to a wide range of creative possibilities and output options.

### Media Resource Centre

A central resource for digital cameras, tripods, 35mm DSLRs, 35mm film cameras and lighting equipment.

### Film Studio

Professional film production studio, equipped with Canon EOS C500 cameras, green screen and control room.

# What are graduates doing now?

---

“Studying for my MA at NUA was challenging and rewarding. The course structure allowed me to expand my creative practice, develop ideas and learn new technical skills. Encouragement from my tutors was instrumental in helping me realise my creative potential. The experience has unlocked new opportunities to move forward into professional practice and potential for further study.”

**Marian Saunders**  
*Audio-Visual Artist*

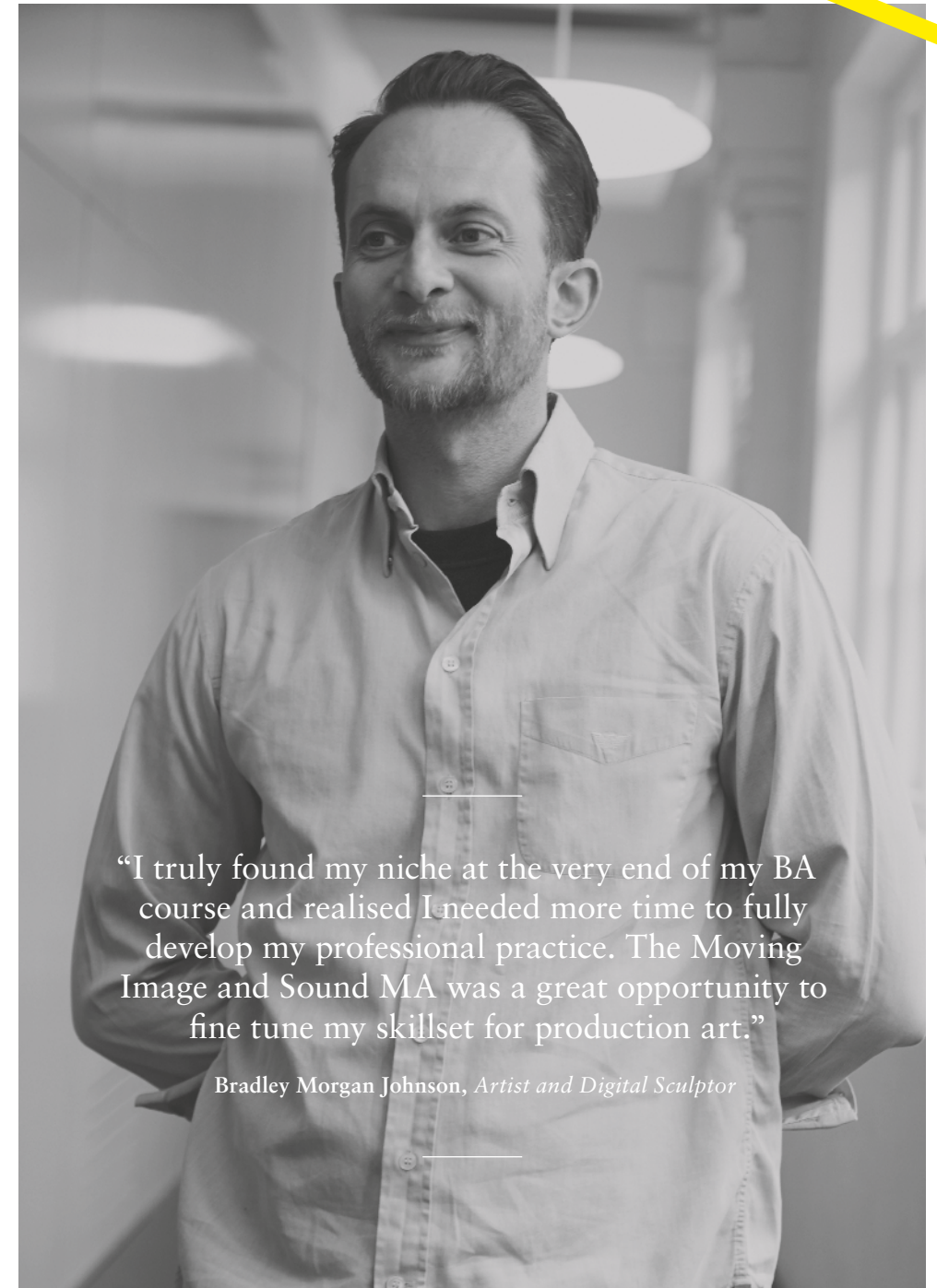
“What I learnt at NUA has had a big practical impact on what I teach and how I teach. I’ve taken tons of stuff from the course and implemented it in the classroom. For instance a technique called Pecha Kucha, which helped hone my communication and pitching skills. I’ve introduced it to students and now other teachers at the college are also using it.”

**Andrew Logie**  
*Media Tutor, Peterborough Regional College*

---

## Graduates work in a broad range of careers including:

- Audio Visual Production
- Film
- Motion Graphics
- CGI
- 2D and 3D Animation
- Scripting and Narrative
- Pre and Post Production
- Teaching/Lecturing
- Research/PhD Study



“I truly found my niche at the very end of my BA course and realised I needed more time to fully develop my professional practice. The Moving Image and Sound MA was a great opportunity to fine tune my skillset for production art.”

**Bradley Morgan Johnson**, *Artist and Digital Sculptor*

# MA Photography

**Innovation in individual practice and the development of critically-informed perspectives are the guiding principles of the MA Photography course.**

MA students use state-of-the-art studios and digital darkrooms to develop their authorial voice in an advanced study of photographic practice.

You'll be encouraged to develop a deep understanding of the professional and commercial contexts for your work – and explore the possibilities for moving image in contemporary photography.

While the course is practice-led, taught components consider contextual and theoretical aspects of photography: from collaboration, aesthetic/anti-aesthetic, technological determinism to the impact of emerging technologies.

Seminars and workshops will encourage you to explore the complex relationship between individual practice and client-led work – informed by NUA's strong reputation in advertising, fashion and editorial photography and the University's links to industry and professional bodies, including the Association of Photographers.

You'll be encouraged to develop a strong individual voice within your visual practice throughout the course.

**James Cant**  
*Subject Leader/MA Core Tutor*

Danyelle Farrell  
*The Match*





Gudbjorg Ylfa  
*Social Uncertainty*

Karim Skalli  
*Third Space*

Leo White  
*SKOV – 3*

Jeanette Bolton-Martin  
*Impermanent Spaces*



## Facilities

**MA Photography students are based in the East Garth building with purpose-built studios and a digital darkroom. A team of technicians provide inductions and ongoing technical support.**

### Digital Darkroom

24 workstations. Software includes Aperture, Capture One and Adobe Creative Suite. Data projection is installed for reviewing and critiquing work. High quality flat-bed transparency/reflective scanners are installed, as well as a photographic quality inkjet printer.

### Photography Studios

Equipped with a range of professional studio equipment: from table-top still life work to full-length model photography. The studios include a full blackout studio with flexible options for configuring the layout to suit the varied requirement of individual and taught study. Professional

camera kits with specialist lenses; medium format digital camera kits and a full range of professional studio lighting, camera supports and accessories are provided for use in the studio or on location.

### General Technical Sessions

Optional software inductions available to all students introduce you to a wide range of creative possibilities and output options.

### Media Resource Centre

A central resource for digital cameras, tripods, 35mm DSLRs, lights, moving image and sound equipment. Portable studio flash kits and other specialist items are available for Photography students.



## What are graduates doing now?

---

“During my time at NUA networking and collaboration became very important, I worked with many of the students from the MA community including design students who helped produce my photo publication. Through exhibiting in my final year, I was interviewed by the British Journal of Photography and I have also had the opportunity to build a large network of creatives thanks to NUA.”

**Karim Skalli**  
*Freelance Photographer*

---

### Graduates work in a broad range of careers including:

- Freelance Photographer
- Art Director
- Picture Librarian
- Technician
- Image Producer
- Picture Editor
- Visual Arts
- Teaching/Lecturing
- Research/PhD Study

“Having come back into academia from industry I found the faculty, tutors and facilities all helped me to develop my visual identity.”

**Erin Patel**  
*Photographer and Lecturer*



“The MA structure and the tight-knit community here has encouraged me to consider the ways in which my practice can be innovative in the broader context of the industry.”

**Emily Jane Morgan**, *Photographer*

---

# MA Textile Design

**Creativity, craft skills and technological innovation combine on the MA Textile Design course.**

You'll work at the forefront of the discipline – embracing the latest digital and technological advancements while developing a clear understanding of the market and commercial potential for your work. Students are encouraged to stretch the boundaries of the discipline through creative engagement with materials, processes and concepts.

Course tutors and workshop technicians are also practitioners with extensive and diverse experience in areas including: digital textile production, CAD for repeat design, laser cutting, illustration, dye and weave. Their breadth and depth of

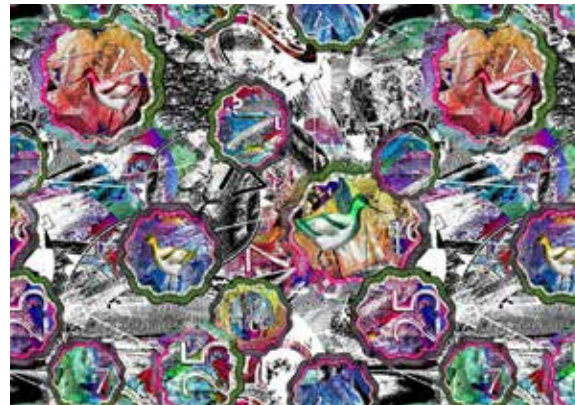
experience will support you as you experiment and develop your practice through exhibitions and national competitions.

Tutorials and practice-based projects encourage debate and reflection on the environmental, ethical and social impact of textile design. Guest speakers from industry guests will support your professional development and understanding of the range of pathways for practising designers in a rapidly evolving sector.

**Dr Helen Paine**  
*Subject Leader*

Nicola Hockley  
*Archived*






---

Mark Mann  
*Acts of Gross Indecency*

Lydia Bartlett  
*Materials in Movement*

Georgina Ridgley  
*Chaos*

---

## Facilities

---

**MA Textile Design students are based in the St Georges building. A team of full-time technicians provide ongoing technical support.**

**Textile Print and Dye Workshop**  
Resources include: long print tables with repeat furniture for screenprinting fabric lengths, heat presses, dye kitchen with steaming and washing facilities.

**Constructed Textiles Workshop**  
Resources include: digital sewing, embroidery and knitting machines with professional software, spinning wheels, tapestry frames, smocking machines, shaft table top looms, digital reactive and acid dye fabric printer, Epson 7000 digital disperse dye sublimation printer and Mimaki TX2 digital fabric printer.

**Digital Design Workshop**  
Equipped with the Adobe Creative Suite. AVA professional textile design software is available for taught delivery and individual use.

**General Technical Sessions**  
Optional software inductions available to all students introduce you to a wide range of creative possibilities and output options.

**Media Resource Centre**  
A central resource for digital cameras, tripods, 35mm DSLRs, 35mm film cameras and lighting equipment.

**Laser Cutting**  
Large-bed cutter for card, board and acrylic materials with associated digital design hardware and software.

# What are graduates doing now?

---

“Having the opportunity to have professional feedback from designers such as Kit Miles while working on live briefs really helped me up my game as a designer and produce work that was industry ready. The research aspect of the course really helped me focus on the type of work I wanted to make. My MA has provided me with enough projects to keep me going for the next 10 years!”

**Mark Mann**  
*Textile Designer and Academic, selected for *Queer Art(ists) Now* as part of *Queer Arts Festival London 2018**

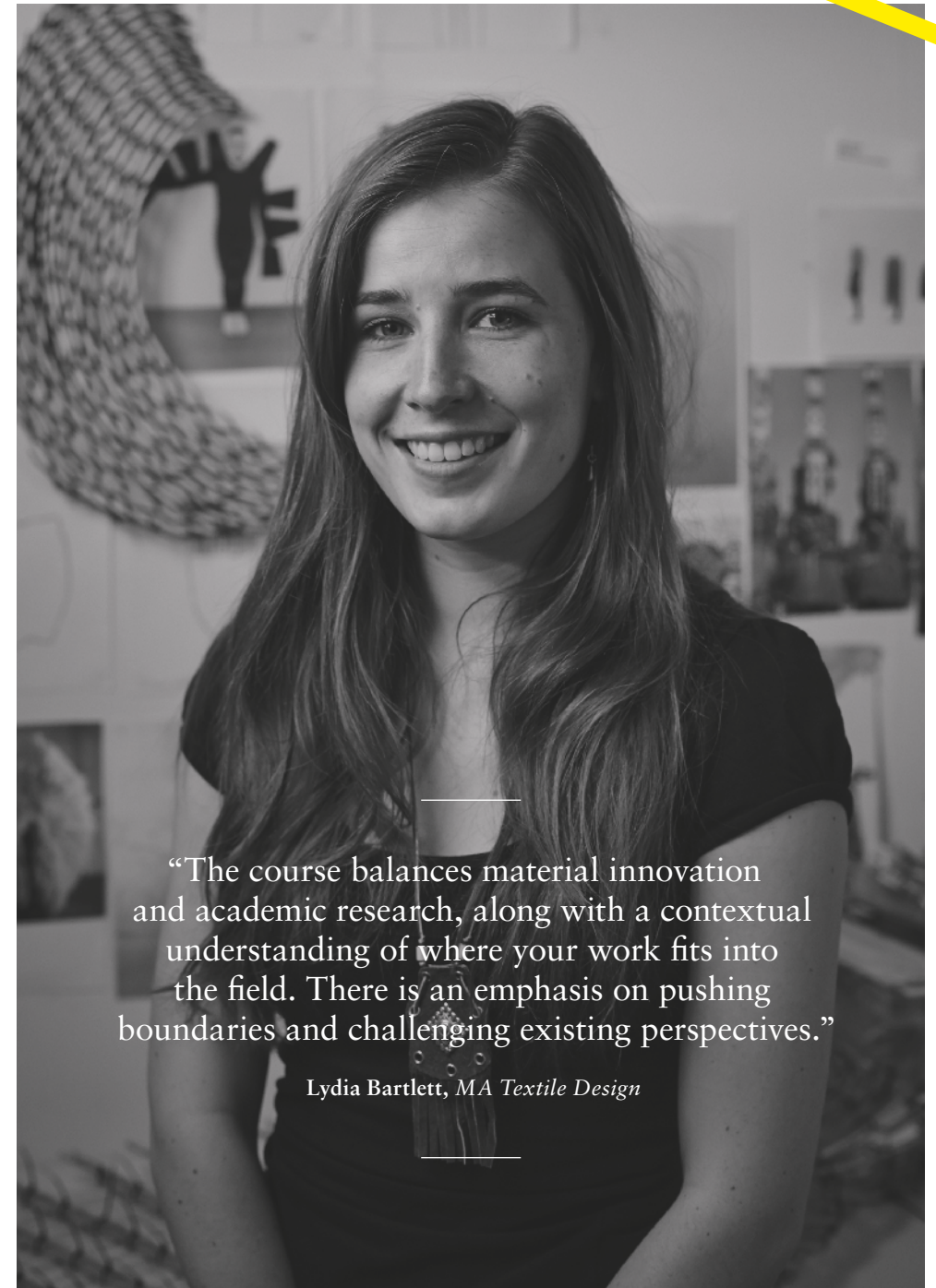
---

## Graduates work in a broad range of careers including:

- Textile Designer
- Textile for Fashion Design
- Interior Design
- Print Design
- Illustration
- Conservation
- Product Design
- Styling
- Branding/Marketing
- Materials Production
- Further/Higher Education
- PhD Study

“It was a smooth transition from Masters study to work. I approach my job in a similar way to studying in that I am sensitive to news, current publications, the documentation of projects and exhibitions.”

**Bridget Donahue**  
*Director, Bridget Donahue Art Gallery, New York*



“The course balances material innovation and academic research, along with a contextual understanding of where your work fits into the field. There is an emphasis on pushing boundaries and challenging existing perspectives.”

*Lydia Bartlett, MA Textile Design*

—  
Your  
next  
steps  
—

---

## Applications

There is no official deadline for applying for a postgraduate course, and you can apply up to September in the Autumn you wish to start. However, we recommend you apply as early as possible as our courses have limited spaces available. This will allow time for your interview to take place and the necessary paperwork to be processed if you are successful in achieving a place.

International students requiring a visa should apply as soon as possible in the year they wish to start.

Applications to all postgraduate courses should be made directly to the Norwich University of the Arts using an MA Application Form.

For details on applying for a Masters degree at NUA  
[www.nua.ac.uk/study/postgraduate](http://www.nua.ac.uk/study/postgraduate)

---

## Entry criteria

The offer of entry onto a Masters degree is based on an expectation that you have the potential to fulfil the aims of the course of study and achieve the standard required to successfully complete the award.

Entrants should normally have achieved a BA (Hons)/BSc (Hons) degree of 2:1 or above (or its equivalent), in a subject related to your proposed course of study. Applicants who hold a degree from another discipline may also be considered for entry, subject to the submission of a satisfactory portfolio of art, design or media-related work.

---

## Interviews and portfolio

The majority of applicants will be invited to interview. This provides an invaluable chance for us to meet and is the major factor in determining the success of your application. The interview is an opportunity to assess your work and the suitability of your application and also provides you with a chance to get to know NUA's staff, campus and facilities.

The key focus of the application process is on your portfolio. Your portfolio should show not only previous and present work, but should also show where you want the MA to take you in the future.

The viewing of creative work is an important part of the selection process for MA study and allows us to engage with you in discussion about your work and your future ambitions. If you are currently in your final year of an undergraduate degree, we recognise that it may not be possible to include your final project work at the time of application. Representative images of work in progress or indicative practice are welcome. We're interested in receiving applications from people who wish to change career direction, and for those students we may require an enhanced portfolio to show your potential skillset and interest.

For further details on the interview process and tips on portfolio presentation  
[www.nua.ac.uk/study/postgraduate](http://www.nua.ac.uk/study/postgraduate) or email [studentrecruitment@nua.ac.uk](mailto:studentrecruitment@nua.ac.uk)

---

## Tuition fees

MAs at NUA are available on a full-time and part-time basis, with the exception of MA Games which is available as full-time study only.

For up-to-date information on fees, funding, grants, loans and bursaries  
[www.nua.ac.uk/study/finance](http://www.nua.ac.uk/study/finance)

All our alumni are entitled to a tuition fee discount.

For more details please email [postgrad@nua.ac.uk](mailto:postgrad@nua.ac.uk)

---

## Financial support

Full-time postgraduate students starting a Masters course will be able to apply for a government loan of up to £10,609 towards course fees or living costs. Some part-time students will also be eligible.

For more information about postgraduate loans  
[www.nua.ac.uk/study/finance/postgraduate-loans/](http://www.nua.ac.uk/study/finance/postgraduate-loans/)

More information is also available on Prospects, the UK's official graduate careers  
[www.prospects.ac.uk](http://www.prospects.ac.uk)

Professional and career development loans can help you pay for learning that enhances your job skills or career prospects. It's a bank loan, so you'll have to pay it back once you've left your course. However, you do not pay interest for the period while you are in learning.

[www.gov.uk](http://www.gov.uk)

Postgrad Solutions offers six UK Postgraduate Study Bursaries, each to the value of £500.

[www.postgrad.com](http://www.postgrad.com)

Alternative Guide to Postgraduate Funding  
[www.gradfunding.co.uk](http://www.gradfunding.co.uk)

---

## Accommodation

Norwich is one of the safest cities in the UK with an abundance of high-quality affordable housing near the city centre. A very popular student living area is the 'Golden Triangle', which has plenty of cafes, delis, pubs and restaurants and the nearby Sportspark complex. Our Accommodation Office is able to provide advice and support in finding suitable accommodation. They will be able to supply you with a list of letting agencies, available properties and review contracts for you if necessary.

Call +44 (0)1603 610 561

Email [accommodation@nua.ac.uk](mailto:accommodation@nua.ac.uk)

For more details on living in Norwich  
[www.nua.ac.uk/study/accommodation](http://www.nua.ac.uk/study/accommodation)

---

## Student Support

Our Student Support team is available to offer help with educational, practical, personal and financial matters, ensuring every NUA student can make the most of their university experience. In addition, an external counselling service is accessible to all students.

[www.nua.ac.uk/study/support](http://www.nua.ac.uk/study/support)

---

## Disabilities

Offers to study at NUA are made on the basis of merit alone. NUA welcomes applications from everyone, including those with disabilities and specific learning differences (such as dyslexia). To help us meet your needs and put appropriate support in place, you are advised to contact the University to discuss your situation before submitting a formal application.

[www.nua.ac.uk/disability](http://www.nua.ac.uk/disability)

---

## Progression to postgraduate research

Our research students are important members of our Research and Consultancy Network, and work with academic staff who are internationally renowned for their research and creative practice. MA students are invited and encouraged to take part in our programme of research seminars, which will take place throughout the year.

Research degrees at the University are offered in partnership with the University of the Arts London, creating opportunities for collaborative research between the two institutions.

For more details on research degrees  
[www.nua.ac.uk/research/degrees](http://www.nua.ac.uk/research/degrees)

## International applications

NUA welcomes students from all over the world to join our diverse postgraduate community. We ask that international MA applicants submit their application as early as possible to ensure that we have sufficient time to discuss your research and study interests in detail and to be able to confirm that your qualifications and other formal aspects of your application are in order. We require applicants to submit a 500 word statement outlining your intentions for MA study.

If you meet the necessary academic requirements of the course you'll be asked to submit a portfolio of art, design or media-related work in support of your application. While we welcome applicants to the Norwich campus for interview, we recognise that the majority of international candidates will submit work digitally. Once your portfolio has been received you may be invited for an interview. Where possible these will be conducted in person, although most international applicants will interview via Skype.

For guidance about portfolios/interviews [www.nua.ac.uk/international/apply](http://www.nua.ac.uk/international/apply)

A decision about your application will be made shortly after the interview and you'll be informed via email.

We require IELTS 6.0 (academic module or equivalent) with a minimum score of 5.5 in each component of the exam. You must also hold a BA (Hons)/BSc (Hons) with a 2:1 or equivalent in a subject related to your chosen programme of study.

NUA is an approved sponsor of the UK Home Office points-based system. Students will need to apply for a Tier 4 (General) Visa under the points-based system in order to study in the UK. The International Office can offer further guidance on making your visa application.

NUA is a member of the British Council's Education Partnership and also subscribes to the United Kingdom Council for International Student Affairs. Both bodies offer impartial advice and information about studying in the UK. UKCISA ([www.ukcisa.org.uk](http://www.ukcisa.org.uk)) provides guidance notes to help with your application. However, do not hesitate to contact the International Office if you have any questions or concerns about the application process.

## International induction

Every year the University opens the International Student Arrivals Lounge prior to enrolment week specifically designed to welcome international students and provide them with the tools they need to establish their new life in the UK. It also offers a social and creative space where newcomers can meet one another and familiarise themselves with the University, Norwich and the surrounding area. There is a social programme specifically for the overseas community and the International Office is available to support you throughout your study.

## Funding for international students

Your local British Council office can provide you with details of scholarships and other sources of funding that you can apply for as an international student.

Prospects is the UK's official graduate careers website. For specific advice for international students [www.prospects.ac.uk](http://www.prospects.ac.uk)

For advice on applications and fees please contact our International Office:

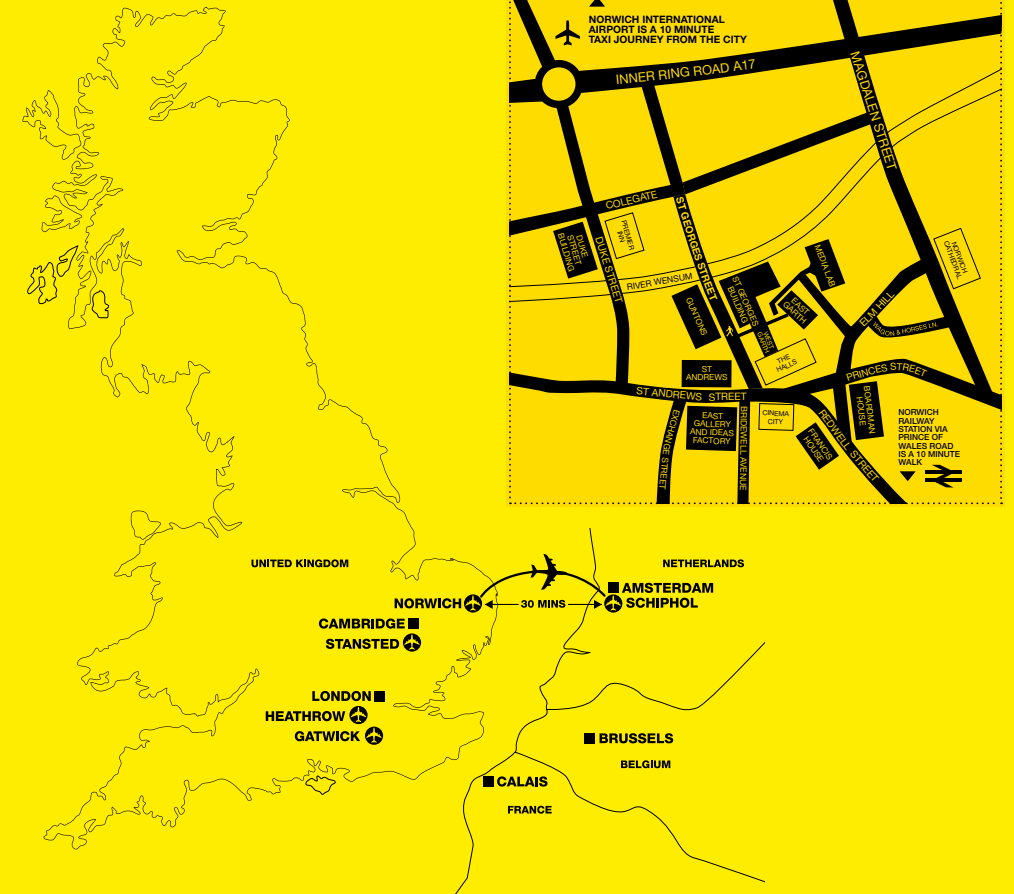
Call +44 (0)1603 756 249

Email [international@nua.ac.uk](mailto:international@nua.ac.uk)

For more details on studying at NUA [www.nua.ac.uk/international](http://www.nua.ac.uk/international)

## Where we are

Norwich is on the east coast of the UK, just a 1hr 50 minute direct train journey from London Liverpool Street. The city also has direct train links to Cambridge, Peterborough, Sheffield, Manchester and Liverpool. Norwich International Airport offers daily direct flights to Schiphol, Amsterdam, connecting Norwich to thousands of destinations worldwide.



---

## Disclaimer

The information in this handbook is intended as a general guide to the courses and facilities offered at Norwich University of the Arts.

Although the information provided is believed to be correct at the time of publication, the University reserves the right to make changes to the content or delivery of courses or the facilities and resources which support them.

The handbook is issued as a guide and does not form any part of any contract between Norwich University of the Arts and the student.

We hope that this handbook has inspired you to ask more questions. We welcome your questions and can be contacted in the following ways:

### Phone or email

United Kingdom *01603 610 561*

International *+44 (0)1603 756 249*

*postgrad@nua.ac.uk*

*www.nua.ac.uk/courses/postgraduate*

### Stay social

 @NorwichUniArts

 facebook.com/NUAnews

 @norwichuniarts

 norwichuniarts

Find out more about our courses, campus life and the student experience in our beautiful city on our website *www.nua.ac.uk*

### Write to us

Norwich University of the Arts  
Francis House, 3–7 Redwell Street  
Norwich, Norfolk, NR2 4SN

---

## Book an Open Day place

Open Days provide an invaluable opportunity to view the campus and facilities, meet academic staff and talk to current students.

To find out the latest dates and reserve a place on a Postgraduate Open Day, complete a booking form on the NUA website or contact our Recruitment Team:

Call *+44 (0)1603 610 561*

Book your place *www.nua.ac.uk/opendays*

---

## Prospectus team

### Design

Ark

*www.designbyark.co.uk*

### Photography

NUA staff, graduates and students

### Additional photography

Joakim Borén

David Drake

Pete Huggins

Denisa Ilie

Joanna Millington

Owen Richards

### Proofreading

Joanna Peios

*www.wordetc.co.uk*

### Print

Page Bros

*www.pagebros.co.uk*



Norwich University of the Arts  
Francis House, 3–7 Redwell Street  
Norwich, Norfolk, NR2 4SN

---

 @NorwichUniArts

 facebook.com/NUAnews

 @norwichuniarts

 norwichuniarts

---

*[www.nua.ac.uk](http://www.nua.ac.uk)*