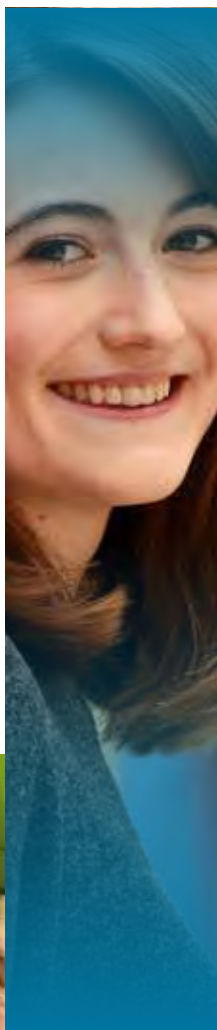


BE TEESIDE



2020

Undergraduate prospectus



CONTENTS

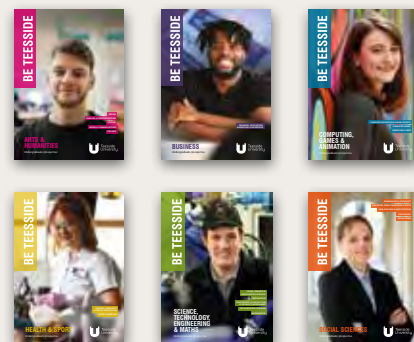
| | |
|----|--|
| 1 | Welcome |
| 2 | Be here – our location |
| 4 | Find the right course for you |
| 6 | Be ready – how to apply and UCAS tariff tables |
| 10 | Be on track – your journey through Year 12 and 13 |
| 14 | Be Teesside – Teesside University in numbers |
| 16 | Be welcomed – our campus is a people place |
| 18 | Be part of the future – our campus masterplan |
| 20 | Be supported – Student & Library Services |
| 22 | Be digital – your own iPad and more |
| 26 | Be employable – your career path |
| 30 | Be local – Middlesbrough, Yorkshire and the North East |
| 34 | Be adventurous – more of Middlesbrough and the region |
| 36 | Be at home – our accommodation |
| 40 | Be involved – our Students' Union |
| 42 | Be active – sport and fitness |
| 44 | Be informed – fees and funding explained |
| 50 | Be flexible – study part time |
| 52 | Be international – international students, international success |
| 56 | Be encouraging – for parents and teachers |
| 58 | Index |
| 63 | Campus map |



Build your own prospectus

Don't forget to pick up one of our subject brochures to accompany this prospectus – you'll find detailed information about entry requirements, fees and course content for all of our full and part-time courses.

- **ARTS & HUMANITIES**
- **BUSINESS**
- **COMPUTING, GAMES & ANIMATION**
- **HEALTH & SPORT**
- **SCIENCE, TECHNOLOGY, ENGINEERING & MATHS**
- **SOCIAL SCIENCES**



ORDER EXTRA SUBJECT BROCHURES enquiries@tees.ac.uk

NATALIE CHIN

BE TEESSIDE

BA (Hons) Computer Character Animation graduate

JUNIOR ANIMATOR, ANIMA POINT IN MALAYSIA

'ExpoTalent and ExpoTees helped me get a better grasp on how to communicate with potential clients or employers about my projects and ideas.'





It is my privilege to be Vice-Chancellor of Teesside University and I am delighted you are considering joining our student community. Choosing what and where to study is one of the most important decisions you'll ever make, so I hope this prospectus shows you what makes Teesside stand out and how we can help you achieve the future you deserve.

Welcome

At Teesside University, you become part of a diverse, inclusive community where our students are at the heart of everything we do. We also understand that each learning journey is unique and we help you develop professionally and personally, allowing you to become the person you want to be.

Our quality teaching is enriched by research, industry collaboration and a focus on an inspiring and innovative learning experience. Our portfolio of thought-provoking and industry-relevant courses makes Teesside University a popular choice for students across the globe – as evidenced by our ranking in the *Times Higher Education* Student Experience Survey 2018, positioning us at number 34 out of 116 UK institutions for student experience.*

We have invested in our facilities to provide a stimulating, modern learning environment, looking ahead to the future of learning and how we can embrace this to enhance your experience. Our campus heart is compact and impressive, perfectly complementing our newly refurbished Business School, social spaces and award-winning Students' Union. Construction has begun on our Student Life Building – merging our key student-facing areas for a more efficient service.

Teesside University is located in the centre of the Tees Valley with strong links to business and industry. Our team works hard to forge new national and international connections with our local area to facilitate key learning experiences for our students, such as live projects and work placements.

Our commitment to nurturing enterprise and entrepreneurship is reflected in our start-up hub, Launchpad, which houses our thriving graduate businesses. Industry links with innovative local projects such as DigitalCity and the National Horizons Centre help you engage in real experiences to develop your skills and knowledge. Our work in this area has been recognised in our 2018 Enterprising Britain Award, and we are also the UK finalist in the European Enterprise Promotion Awards, which celebrate diverse enterprise projects from across the continent.*

We remain dedicated to providing an outstanding student and learning experience. Last year, we introduced an ambitious future-facing learning framework, with the purpose of helping our students succeed in a complex and ever-changing world. The University established a new partnership with Microsoft to enhance digital connectivity and innovative learning approaches.

Please come to one of our open days and discover how you can be inspired, be successful and be amazing at Teesside. I look forward to welcoming you.

Professor Paul Cronney
Vice-Chancellor and Chief Executive

BE HERE

Teesside University is a friendly town-centre campus in Middlesbrough, in the North East of England – close to the coast and countryside. It is within easy reach of York, Durham and Newcastle and less than three hours from London and Edinburgh by train.



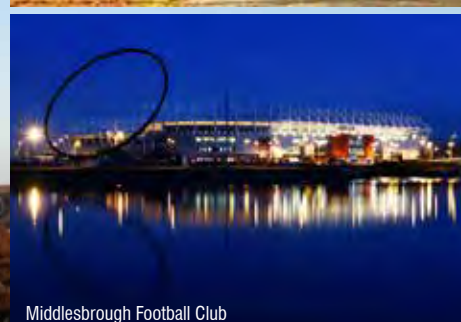
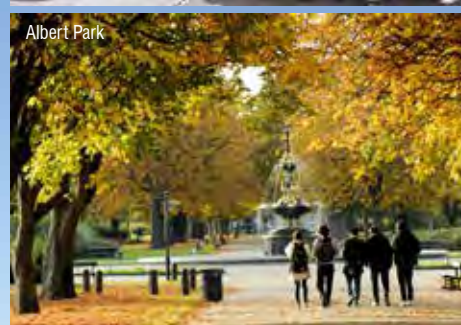
Yarm High Street



Orange Pip Market



Albert Park



Middlesbrough Football Club

BE TEESSIDE



The Sitting Man: North York Moors

FIND THE RIGHT COURSE FOR YOU

We offer courses in a huge range of subjects from aerospace engineering to computer animation, law to midwifery, and music technology to international business.

Many of our courses are accredited by the relevant professional bodies and our health courses allow you to subsequently apply for membership. You need to ensure that your chosen course enables you to progress to your planned career – and be mindful that academic requirements for professions can vary between different countries.

You can tailor most of our courses by choosing from a range of optional modules – so you can explore the specific areas within your subject that most interest you. You can also choose a foundation year option or work placement on the majority of our degree courses.



The Quality Assurance Agency (QAA) is an independent body entrusted with monitoring and advising on standards and quality in UK higher education and ensure that students working towards a UK qualification get the experiences they are entitled to expect.

We offer the following types undergraduate courses.

International foundation year (120 credits)

A one-year programme for international students that combines English language with some subject-specific modules.

- > International Foundation Year (Business and Computing)
- > International Foundation Year (Social Sciences and Law)

Higher national certificates (120 credits) and higher national diplomas (240 credits)

These are vocationally orientated qualifications validated by Edexcel. You can often progress from one of these qualifications to study for a degree.

Foundation degrees (240 credits)

These work-related courses are designed in conjunction with employers to let you combine studying and working to improve your qualifications. They include case studies and live briefs through relevant work-related learning. You can often progress from one of these qualifications to study for a degree.

Undergraduate degree (360 credits)

Three years of study, sometimes called a bachelor's or first degree, or four years with a placement year.

- > Bachelor of Arts, BA (Hons)
- > Bachelor of Engineering, BEng (Hons)
- > Bachelor of Laws, LLB (Hons)
- > Bachelor of Science, BSc (Hons)

Higher and degree apprenticeships (varying credits)

You gain technical knowledge and practical experience by combining on-the-job training with flexible study towards a higher education qualification, from the equivalent of a foundation degree to a full bachelor's or master's degree in some sectors. To be accepted on to a degree apprenticeship you must be employed and have the support of your employer.

- > Degree apprenticeship Linked award

🔗 tees.ac.uk/apprenticeships

Degrees with foundation year (480 credits)

A four-year programme that includes an integrated foundation year – ideal if you need additional preparation and/or if you don't have sufficient grades to join Year 1 of a degree.

- > Bachelor of Arts, BA (Hons) (with Foundation Year)
- > Bachelor of Engineering, BEng (Hons) (with Foundation Year)
- > Bachelor of Science, BSc (Hons) (with Foundation Year)

Top-up degree or final-year entry (120 credits)

A one-year, full-time course allowing you to top-up a higher national diploma (HND) or foundation degree to an undergraduate degree.

- > Bachelor of Arts, BA (Hons)... (Top-up)
- > Bachelor of Engineering, BEng Tech (Hons)... (Top-up)
- > Bachelor of Science, BSc (Hons)... (Top-up)
- > If you have a diploma, HNC, HND, foundation degree (or equivalent) you may be able to enter in Year 2 or 3 of our degree programmes, based on your previous level of study and level of English.

Integrated master's degree (480 credits)

A four-year, full-time integrated programme with three years at undergraduate level and one year at master's level that emphasises industry relevance.

- > Master of Computing, MComp (Hons)
- > Master of Engineering, MEng (Hons)
- > Master of Science, MSci (Hons)

TAKING A PLACEMENT YEAR

Benefit from an integrated placement if you're studying a course within healthcare, education or social work. Or opt for a placement year or a shortened placement with most degrees.

By taking a work placement year you develop your technical skillset and get experience, both favoured by graduate recruiters. You also develop your transferable skills – communication, negotiation, teamwork, leadership, organisation, confidence, self-reliance, problem-solving, being able to work under pressure and commercial awareness.

CONTINUING PROFESSIONAL DEVELOPMENT

A way of supporting you in the workplace to develop new knowledge and skills. It can be any activity that helps you achieve your career goals, better understand your job and how to do it better. Our Darlington campus is home to our Centre for Professional and Executive Development, offering training and development opportunities as well as consultancy and research. We also offer a range of health and social care continuing workforce development courses to improve the quality of care to patients and service users.

OPEN LEARNING

We have a large portfolio of accredited open learning programmes, serving the engineering and process industries worldwide. We have been creating stand-alone, open learning materials for over 25 years. So, if you work on an oil rig in the Caribbean or in pipeline construction in a desert, you can still study effectively at your own pace. We are currently developing our distance learning offer to deliver a broad range of flexible open and online programmes designed to fit around you and your commitments. Keep checking the website for more information.

🔗 tees.ac.uk/onlinelearning

ENTRY REQUIREMENTS

We usually make conditional offers in UCAS tariff points. For some courses you may need to include points from certain subjects in your tariff points score. Each course listing details the entry requirements.

We give equal consideration to all academic and vocational qualifications. You may also have skills we can consider like work experience or vocational training. Don't be discouraged if you can't meet the exact entry requirements – talk to us.

For international student entry requirements see the course pages on our website.

🔗 tees.ac.uk/undergraduate

FIND OUT MORE 🔗 tees.ac.uk/ug/entry

BE READY

HOW TO APPLY

Your path to Teesside University in eight easy steps:

1. SEARCH

There are lots of sources you can use to get more information on universities and the courses they offer. Check out the courses on our website or in this prospectus, or use websites and forums like UCAS or The Student Room.

2. VISIT US

Come and see us at an open day – see the back page for this year's dates. They're a great way to get a feel for the campus and speak to staff and students about courses and University life.

3. APPLY

Once you've narrowed down your course and university choices you can apply through UCAS if you're a full-time UK/EU student.

4. GET ORGANISED

You may be invited to interview, depending on the course you've applied to. Or you might be asked to present a portfolio of work. Make sure you take the time to get fully prepared.

5. SIT TIGHT

Keep an eye on UCAS track for any updates to your application. You are able to see which universities have offered you a place, as well as reply to any offers.

6. REPLY

Once you receive your offers you need to decide on your first and second choice (firm and insurance). This is a great time to come back and visit us at an open day and join our applicant Facebook and WhatsApp groups.

7. GET A PLACE

Hopefully you get the grades you need to join your first or second choice university. Don't panic if you don't, or if you change your mind – give us a ring and we may be able to offer you a place through Clearing.

8. JOIN US

CONGRATULATIONS AND WELCOME TO TEESSIDE UNIVERSITY. This will be the best decision you've ever made and you'll have the time of your life.



UCAS

Universities and Colleges Admissions Service (UCAS) is the central organisation processing student applications for entry to full-time higher education courses.

UCAS has a tariff system, more commonly known as UCAS points, which allows your qualifications to be converted into points. This means that you can use a range of qualifications to help secure your place on an undergraduate course.

In the subject brochures we've listed a range of UCAS tariff points for each course entry. You can aggregate points from different qualifications included in the tariff but you can't count the same or similar subject twice. Any of your achievements at a lower level are incorporated into the higher level.

Certificated Key Skills in Application of Number, Communication and IT at Level 3 attract points. Certain courses don't accept Key Skills Level 2 or 3 Application of Number in place of GCSE grade 4 maths (see individual entry requirements on our website).

Courses requiring GCSEs for entry will indicate the numerical grade only. Due to the phased introduction of numeric grades for GCSEs in England you may need to convert your grades (for example grade 4 or above equates to grade C or above in alphabetical grades).

The tables on the right show some of the most popular qualifications covered by the UCAS tariff, with the points allocated for each award. You can find the full list and a tariff calculator on the UCAS website.

Students without conventional entry qualifications – we welcome applications from students who do not meet conventional entry requirements and we take into account alternative qualifications or other experience you may have. Recognition of prior or experiential learning (RPCL) and recognition of prior certified learning (RPCL) enables you to claim credits that can count towards the course you want to study.

Access courses – consider an Access course if you have no previous qualifications. Access courses are specifically designed to prepare mature students to enter into higher education. These are also now included in the UCAS tariff.

International students – for acceptable international qualification equivalents and information on language requirements, please see our online international country-specific pages.

📌 tees.ac.uk/international/yourcountry

Information about the application process is also available on our website.

Apply online – all applications for entering full-time and placement first degrees and other undergraduate levels (CertHE and HNC through to integrated masters) must be made online through the UCAS website. Our institution name and code is TEES T20. Apply to the University directly if your course isn't covered by UCAS or if you are studying part time – details are on the course web pages.

GCE and VCE

| UCAS tariff points 2020 entry | A level double award (GCE + VCE) | A level with AS (additional) | A level (GCE + VCE) | AS level double award | AS level (GCE + VCE) |
|-------------------------------|----------------------------------|------------------------------|---------------------|-----------------------|----------------------|
| 112 | A*A* | | | | |
| 104 | A*A | | | | |
| 96 | AA | | | | |
| 88 | AB | | | | |
| 80 | BB | | | | |
| 76 | | A*A | | | |
| 72 | BC | | | | |
| 68 | | AA | | | |
| 64 | CC | AB | | | |
| 56 | CD | BB | A* | | |
| 52 | | BC | | | |
| 48 | DD | | A | | |
| 44 | | CC | | | |
| 42 | | CD | | | |
| 40 | DE | | B | AA | |
| 36 | | | | AB | |
| 34 | | DD | | | |
| 32 | EE | | C | BB | |
| 30 | | DE | | | |
| 28 | | | | BC | |
| 24 | | | D | CC | |
| 22 | | EE | | CD | |
| 20 | | | | DD | A |
| 16 | | | E | DE | B |
| 12 | | | | EE | C |
| 10 | | | | | D |
| 6 | | | | | E |

Key skills

| UCAS tariff points 2020 entry | SQA core skills | Key skills | Essential skills Wales |
|-------------------------------|-----------------|------------|------------------------|
| 6 | Higher | Level 3 | Level 3 |

OCR Nationals

| UCAS tariff points 2020 entry | OCR National Extended Diploma | OCR National Diploma | OCR National Certificate |
|-------------------------------|-------------------------------|----------------------|--------------------------|
| 144 | D1 | | |
| 128 | D2/M1 | | |
| 112 | M2 | | |
| 96 | M3 | D | |
| 80 | P1 | M1 | |
| 64 | P2 | M2/P1 | |
| 48 | P3 | P2 | D |
| 32 | | P3 | M |
| 16 | | | P |

Pearson BTECs (known as Nationals), new Pearson BTEC Nationals and OCR Cambridge Technicals

| UCAS tariff points 2020 entry | Extended Diploma/National Extended Diploma/OCR Cambridge Technicals Extended Diploma | Diploma/National Diploma/OCR Cambridge Technicals Diploma | 90-credit Diploma/OCR Cambridge Technicals Subsidiary Diploma/OCR Cambridge Technicals Foundation Diploma | National Foundation Diploma (new Nationals from 2016) | Subsidiary Diploma/National Extended Certificate/OCR Cambridge Technicals Introductory Diploma/OCR Cambridge Technicals Extended Certificate |
|-------------------------------|--|---|---|---|--|
| 168 | D*D*D* | | | | |
| 160 | D*D*D | | | | |
| 152 | D*DD | | | | |
| 144 | DDD | | | | |
| 128 | DDM | | | | |
| 112 | DMM | D*D* | | | |
| 104 | | D*D | | | |
| 96 | MMM | DD | | | |
| 84 | | | D*D* | D* | |
| 80 | MMP | DM | | | |
| 78 | | | D*D | | |
| 72 | | | DD | D | |
| 64 | MPP | MM | | | |
| 60 | | | DM | | |
| 56 | | | | | D* |
| 48 | PPP | MP | MM | M | D |
| 36 | | | MP | | |
| 32 | | PP | | | M |
| 24 | | | PP | P | |
| 16 | | | | | P |

Irish and Scottish qualifications

| UCAS tariff points 2020 entry | Irish Leaving Certificate: Higher | Irish Leaving Certificate: Ordinary | Scottish Advanced Higher | Scottish Higher |
|-------------------------------|-----------------------------------|-------------------------------------|--------------------------|-----------------|
| 56 | | | A | |
| 48 | | | B | |
| 40 | | | C | |
| 36 | H1 | | | |
| 33 | | | | A |
| 32 | | | D | |
| 30 | H2 | | | |
| 27 | | | | B |
| 24 | H3 | | | |
| 21 | | | | C |
| 18 | H4 | | | |
| 15 | | | | D |
| 12 | H5 | 01 | | |
| 10 | | 02 | | |
| 9 | H6 | | | |
| 8 | | 03 | | |
| 6 | | 04 | | |

You can use the UCAS tariff calculator for any other qualifications:

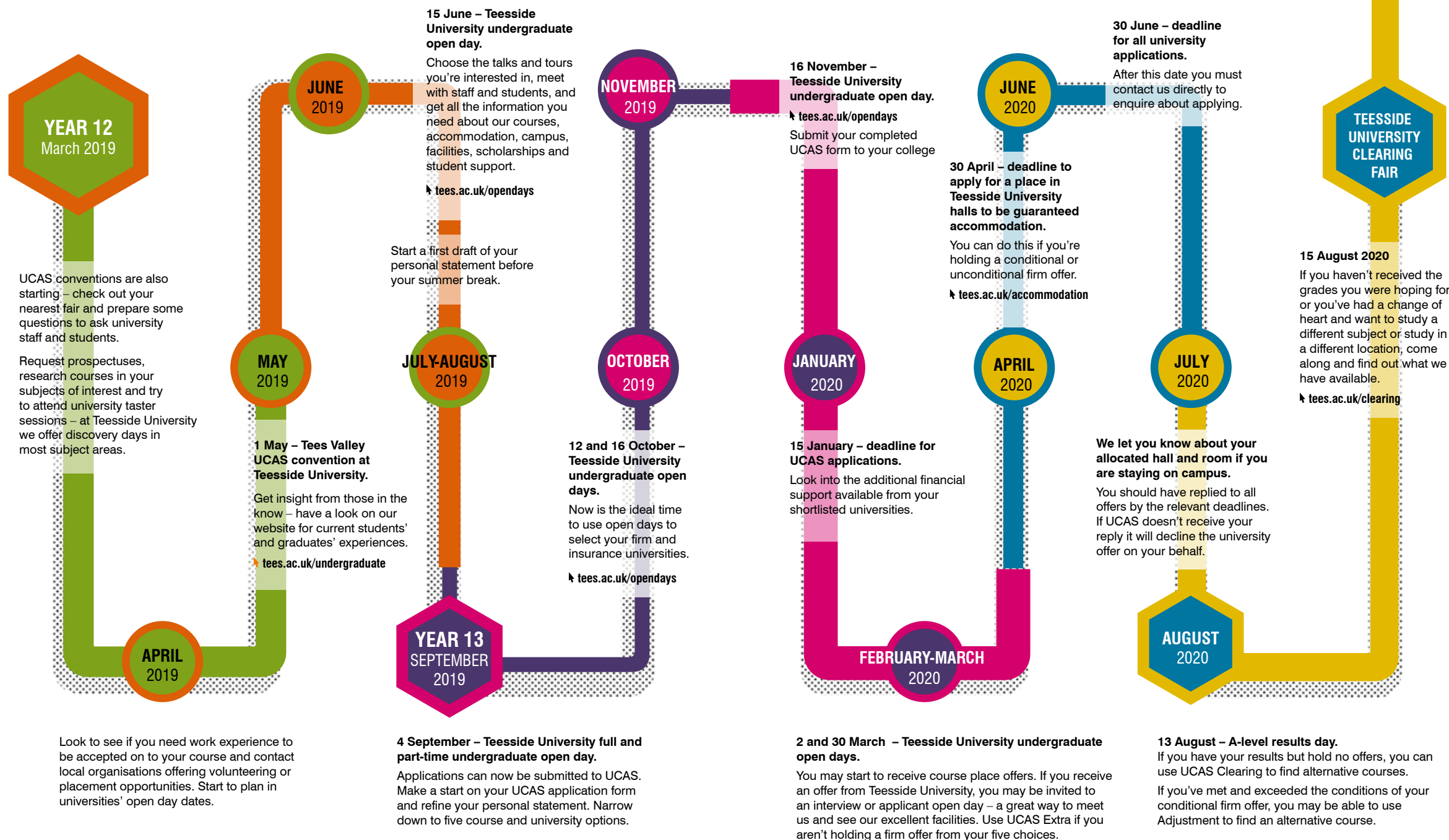
📌 ucas.com/tariff

FIND OUT MORE

📌 ucas.com/tariff

BE ON TRACK

A helpful guide for your journey through Year 12 and Year 13 to university.



BE TEESSIDE

SOPHIE HAMMLER

BA (Hons) Business Management graduate

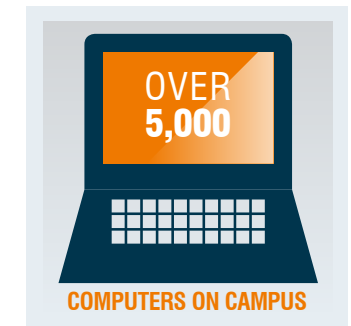
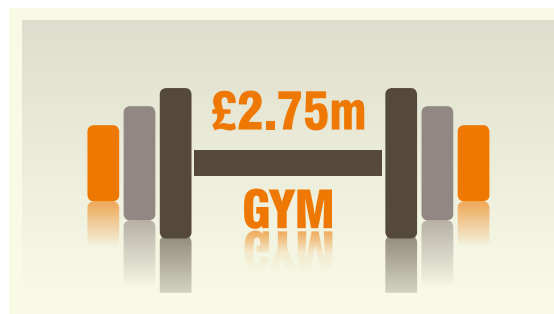
HUMAN CAPITAL CO-ORDINATOR, LAING O'ROURKE

'My placement year working in human resources helped me realise that it could be a long-term career. I don't think I would have got where I am today without studying my degree.'



BE TEESSIDE

Teesside University in numbers





LIBRARY

- > The University Library is at the heart of our campus and is a key element of the student experience.
- > We've recently invested £7m to offer a space focused on learning, research, academic collaboration and contemplation.
- > Each floor is season-themed, offering spaces for social and collaborative learning, individual quiet study and silent study.
- > We're open 24/7 so you can study at a time suitable to you.

👉 tees.ac.uk/sls

BE WELCOMED

Our campus is a people place – you will soon feel like you belong.

Here are some highlights

BUSINESS SCHOOL

- > Our newly-developed home for the growing Teesside University Business School is founded on the principles of enterprise – creativity, thought-leadership, risk-taking and envisioning.
- > This modern, flexible £7.5m refurbishment includes top-notch learning facilities with a focus on collaborative workspaces.

👉 tees.ac.uk/businessschool

FIND OUT MORE

👉 tees.ac.uk/campustour



CAMPUS HEART

- > A vibrant, all-year-round outdoor space that connects the north and south sides of the campus.
- > The area is enjoyed by students, staff and the local community, and is used for events and celebrations throughout the year including a regular community market.
- > The Curve, provides a lecture theatre and flexible, innovative teaching and learning space.



MIDDLESBROUGH INSTITUTE OF MODERN ART (MIMA)

- > Part of the Plus Tate network, international art gallery MIMA became part of the University in 2014.
- > The gallery offers the ethos of a Useful Museum, an institution dedicated to the promotion of art as a tool for education and social change.
- > Art and design students learn the skills of curation, being a successful gallery artist and arts co-ordination within its professional environment.
- > It's free admission, open Tuesday to Sunday.

👉 visitmima.com



NATIONAL HORIZONS CENTRE

- > A £22m bioscience research, education and teaching facility at our Darlington campus.
- > This centre addresses the growth needs of the emerging bio-based industries including biologics, industrial biotechnology and bio-pharmaceuticals.
- > As a student on biomedical, biological and biochemistry programmes you undertake challenging bioscience projects, enhancing your learning experience and career opportunities.

👉 tees.ac.uk/nhc



THE GYM

- > A £2.75m health and fitness centre with cardiovascular and resistance fitness and free weights areas.
- > Use the 30m sprint track, multi-purpose studios, all-weather pitch and specialist treatment area.
- > Current membership is only £8.30 a month and it's open seven days a week.

👉 tees.ac.uk/sport

BE PART OF THE FUTURE

OUR CAMPUS MASTERPLAN UNTIL 2027

We've invested over £270m in our campus over recent years, but we're not stopping there.

We're investing an additional £300m over the next ten years to further enhance your experience.

BE TEESIDE

STUDENT LIFE BUILDING

Completion autumn 2019

- > A student-centred and student-led space, providing a one-stop-shop for support on mental health, finance and accommodation to name a few.
- > The building will be a technology-enabled environment, supporting a variety of learning styles, activities and attendance patterns.
- > It will offer a range of flexible spaces, enabling social and collaborative learning, as well as an information zone, consulting rooms, syndicate rooms and a café.

£12.5m

GENERAL PURPOSE TEACHING AND CONFERENCE FACILITY ROOM

- > Creating a flexible, multipurpose social and academic space.

£10m

CENTRAL LABORATORY

Estimated completion September 2022

- > Housing science, engineering and health clinical lab facilities.

£25m

STUDENTS' UNION

Estimated completion September 2021

- > A major refurbishment and modernisation of the building to produce even better social spaces for day and night use, facilities and events for students.

£3m

DIGITAL PRODUCTION CENTRE

- > A focal point for the School of Computing, Media & the Arts.
- > Existing facilities will be enhanced with new, state-of-the-art teaching and learning spaces as well as office accommodation to support growth.

£13m

Artist's impression of student accommodation

£22m

CORNELL ACCOMMODATION

Estimated completion September 2020

- > New purpose-built facility on campus with 300 en-suite bedrooms.
- > Cinema room and social space.

Artist's impression of the Student Life Building in 2019

BE SUPPORTED

STUDENT & LIBRARY SERVICES

LIBRARY

The Library is open 24/7 and is at the heart of our campus and at the centre of University life. A recent extensive £7m upgrade and enhancement of our facilities included improved access to and speed of ICT, lighting and ventilation, and digital and physical support.

- > Five floors of up-to-date resources with experienced staff on hand.
- > Individual, silent and collaborative learning spaces.
- > Postgraduate space for quiet and silent study.
- > Access to over 500 PCs, millions of learning resources, including print books, journals, ebooks, ejournals and databases, which are all available 24/7.
- > Academic librarians for each subject area.
- > Archives and special collections have material covering 126 years of history.
- > Learning Café.

FIND OUT MORE

tees.ac.uk/sls

INFORMATION, ADVICE AND GUIDANCE

We give you help to manage your learning and help to manage your life.

- > **Learning hub** – provides practical advice on developing your academic skills including literature searching and referencing.
- > **Succeed@Tees** – offers workshops covering a wide range of skills to help you achieve success for learning and life.
- > **Finance** – our advisers provide advice and information on all money matters (tuition fees, grants, student loans or welfare benefits), even before you arrive.
- > **Disability** – provides information and advice on entitlements, facilities, specialised equipment, access and exams, plus liaison with external agencies.
- > **Counselling** – offers a confidential service for you to talk through any issues that concern you.
- > **Chaplaincy** – a service for everyone. Our multifaith chaplaincy provides support for students of any faith and none. We have Muslim prayer rooms and spaces for worship, quiet meditation and prayer.
- > **Student voice** – students are at the heart of everything we do. Working with our Students' Union, we listen to you about your experiences of learning with us. This helps us to continue improving things for future students.

**STUDENT
VOICE**

DEVELOPMENT OPPORTUNITIES

Graduate skills are more than just a qualification – we can help you get ahead.

- > **Careers** – make informed decisions about your career aims and how to achieve them. Our careers service helps with advice, fairs, workshops, mentoring, internships, placements, volunteering, job searches and work experience.
- > **Enterprise** – if you want to set up your own business or just have an interest in entrepreneurship, our graduate enterprise programme can help get you started with business planning, financial help, training and facilities.

FIND OUT MORE

tees.ac.uk/studentsupport

BE DIGITAL

Start your studies with an Apple iPad, the Future Facing Learning toolkit, a keyboard and up to £300 of learning resources*.

Device

We provide an Apple iPad and keyboard to our Year 0 and Year 1 full-time undergraduate students on campus to use within the learning environment.* This means that we have consistency with the devices we use in the learning environment. It also means that the University can provide technical support for their everyday use. And – bonus – you keep your iPad once you have graduated.

Learning credit

As part of the Teesside University offer, you receive £100 credit at the start of each academic year to spend on key course texts through the John Smith's online bookshop. You will be able to access this credit through your University email account after you have enrolled.

Our academic staff have taken part in our Future Facing Learning digital development programme – supporting them to embed the toolkit within their learning and teaching.

Toolkit

The iPad is enhanced by Teesside University's Future Facing Learning toolkit – a collection of software apps available on each iPad. The toolkit is used inside and outside the classroom to support you in preparing for professional life.

Microsoft Office 365 is at the heart of the toolkit – particularly Microsoft Teams which is a collaborative working space that allows you to develop skills that will benefit your career – teamwork, project management, digital literacy.

Some of the apps, such as Socrative and Padlet, are specifically designed to help you actively engage in the learning experience, allowing you to provide feedback and ask questions in an online environment.

You also have access to the MyTU, the Teesside University student portal which provides vital information on your studies – email, calendar, campus map, PC finder, library loans, print credit – and our virtual learning environment for your course materials. All of the apps within the toolkit can also be used on other devices both on and off campus.



**FUTURE
FACING
LEARNING**

Here are some examples of how this may benefit you.

- > Lecturers are developing ebooks for you, our students, to use to guide you through the methodology you need to succeed.
- > If you study Forensic Photography, you are able to connect through Microsoft Teams, filling in a crime scene report and sharing notes while also being able to digitally go through the floor plans of the crime scene rooms you are examining.
- > As a radiography student you use the iPad in simulation labs, bringing real patients into the teaching world so that you can pinpoint any body parts that you need to better understand.
- > In some classes, you are able to save the lecturer's PowerPoint onto your iPad and move through it at your own speed while still being part of the class.
- > The University is rolling out lecture-capture technology which can be also accessed through the virtual learning environment.

* Eligibility criteria online

FIND OUT MORE

tees.ac.uk/advance

Correct for 2019 entry – check the website for the latest information



BE TEESIDE

NATHAN
LEE

BA (Hons) Multimedia Journalism graduate

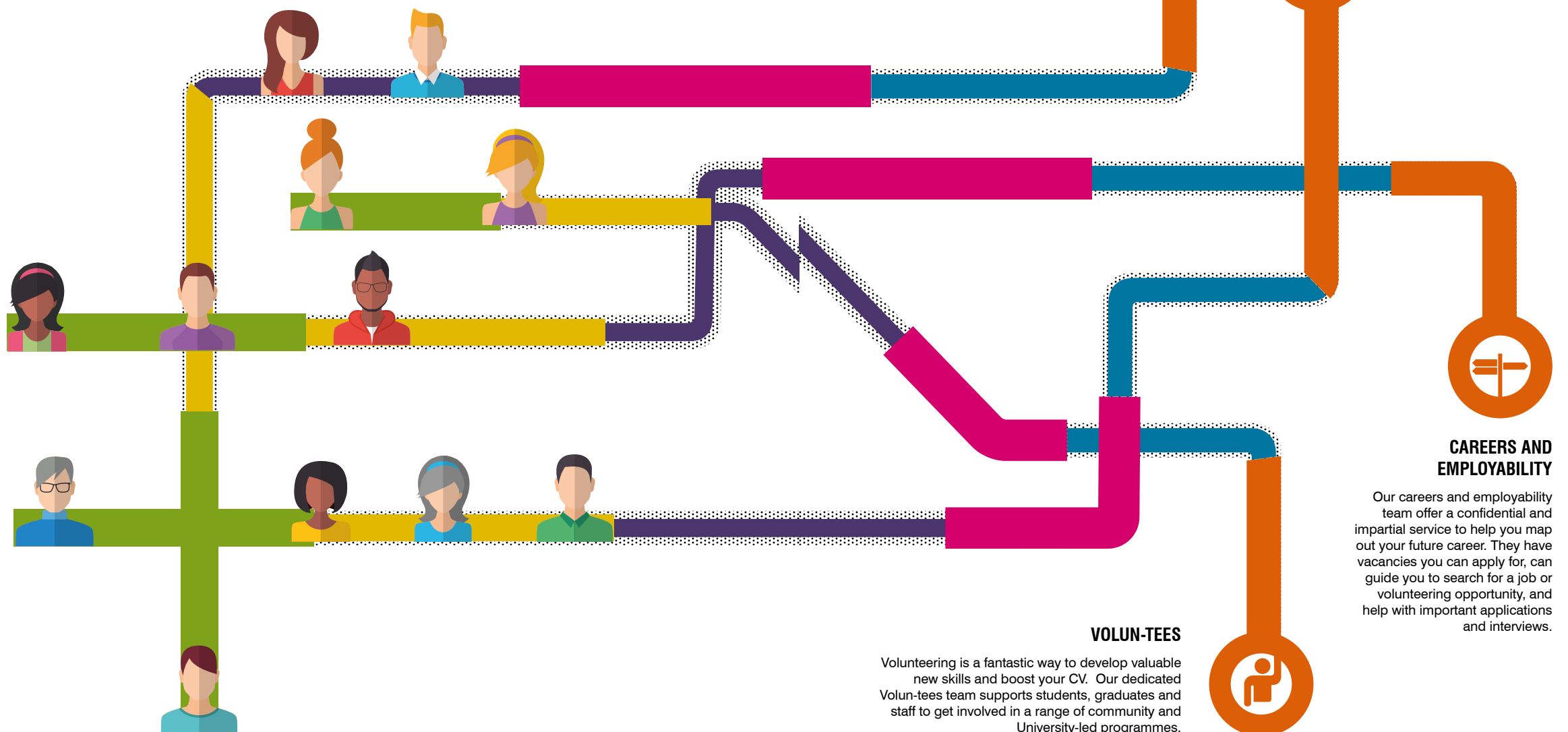
ASSISTANT NEWS EDITOR, ITN NEWS

'The degree taught us every aspect of multimedia journalism and the need in the industry today to be equipped to do everything from gathering the news, to filming, editing and packaging content ready to be distributed to the audience.'

BE EMPLOYABLE

When you come to Teesside University, you discover that our focus is on your career path and the world ahead of you. Our courses provide a high-quality academic education as well as helping you to develop a wide range of practical skills that employers look for.

We are committed to enabling you to create the future you aspire to by offering a range of support and services through our Student Futures offer.



STUDENT FUTURE



Careers &
Employability



Volun-tees



Teesside
Launchpad



Graduate
Recruitment

Be qualified

- > **Accredited courses** – we work with professional bodies such as the Institution of Engineering and Technology, Association of Chartered Certified Accountants, British Psychological Society, Chartered Institute of Marketing, Nursing and Midwifery Council, Health and Care Professions Council, British Computer Society and National Council for the Training of Journalists. We consult with local and national employers to make our courses directly relevant to your future.
- > **Research excellence** – our lecturers and tutors are engaged in research alongside their teaching – which means that you can benefit from the expert knowledge they bring to your course.
- > **Postgraduate study** – we pride ourselves on encouraging our students to aim high. We offer a range of discounts, scholarships and philanthropic awards to help you fulfil your potential through academic study.
- > **Future-facing learning** – using the latest technologies and our own distinctive style of teaching we make sure that our graduates have the knowledge and skills needed to get ahead in the modern workplace.

Be enterprising

- > **Teesside Launchpad** – an entrepreneurial community that offers space, support and advice for anyone looking to start a new venture in Teesside. It provides members with a stimulating environment, creative spaces and the ability to collaborate with start-up founders and gain access to some of the UK's most successful entrepreneurs and investors.
- > **Launchpad FUEL** – an eight-week development programme for Teesside University graduates who are in the early stages of developing a business idea.
- > **Teesside Enterprise** – enterprising students are especially welcome here. Whether you want to explore a business, explore the development of social enterprises to tackle a real community problem, or be a Student Enterprise Pioneer to support your employability, you have the opportunity to do so with us.
- > **DigitalCity** – provides a creative and stimulating environment to support new digital businesses. Entrepreneurs receive support, mentoring and funding and use our high-end facilities to grow their digital and creative industries, attract and retain new graduate talent, develop digital skills and improve employability in the North East.
- > **Business support** – through our on-campus support, our graduates have launched over 500 new businesses, creating 600 jobs.

Be experienced

- > **Working with local employers** – our programmes and employability opportunities are influenced by the international companies based in the region such as SABIC, Nissan, Samsung, Hitachi, Procter & Gamble, Northumbrian Water and Virgin Money.
- > **Work placements** – benefit from an integrated placement if you're studying a course within healthcare, education or social work. Or opt for a placement year or shorter with most degrees. This is a great way of developing skills and gaining a better understanding of the world of work.

Benefits of doing a placement:

- gain practical experience and build your CV
- apply your skills and knowledge to real situations
- gain confidence and experience of adapting to different environments
- develop your commercial acumen and occupational awareness
- network with potential future employers
- earn a salary for the work you are doing
- potentially receive a graduate job offer.
- > **Live projects** – undertake a practical project on behalf of a commercial company – ideal for industrial experience and an excellent addition to your CV.
- > **Industry links** – many of our teaching staff have relevant industrial or professional experience. Their close links with industry keep their teaching up to date – supervising placement students, consulting and developing spin-off businesses.
- > **Law, business and marketing clinics** – working in partnership with industry professionals, our award-winning law and marketing clinics ensure students leave Teesside with the best possible skills for employment. Undertaking real-life briefs, you work alongside lawyers, marketing professionals, local business, charities and voluntary organisations to develop the practical skills required for your respective professions.
- > **Student experience fund** – assists you to undertake projects to enhance your learning, employability and career opportunities through engaging in international volunteering, attending conferences and more.
- > **Knowledge transfer partnerships** – a world-leading programme involving a three-way partnership between a business seeking expertise, a recently qualified graduate and a University academic.
- > **Knowledge exchange internships** – provide fresh-thinking, talented graduates with internships of up to 12 months in companies looking to solve a particular problem or implement a specific project. You are mentored by a University academic or industry specialist and gain invaluable experience.

- > **Study abroad** – we support and encourage you to take advantage of the opportunities abroad that we offer. We have partnerships with institutions in several European countries through the Erasmus scheme and many of our degrees include an optional period of study abroad. Opportunities can last from a single semester to a full year. Studying abroad is an excellent opportunity to gain an international perspective, enjoy a different culture and way of life, develop new skills to impress future employers and gain credit towards your University award.
- > **Student Ambassador programme** – work as a student ambassador, a great opportunity to expand your CV.

Be ready

- > **Careers** – get help from a Careers Adviser to review your options, plan your career path, get experience, identify your strengths and develop your skills. The Graduate Recruitment Consultants on campus support you in your final year with job seeking, CVs, job applications and interview preparation. We work with hundreds of employers and can help you develop professional networks, find and apply for placements and graduate job opportunities, as well as introducing you to great ways to gain experience.



- > **Volunteering** – develop new skills, gain work experience and learn more about your career choices. It's also a great way to meet other students and have fun. We provide recognition through our Volun-tees Awards through University and community-based volunteering opportunities.
- > **Students' Union** – take part in or get involved in leading one of our societies and sports clubs, become a nighttime volunteer, become a course or school representative or stand for election as an officer. We are a big employer of students in the Tees Valley and can help you find part-time work with local employers. We also offer introductory advice on starting in business, signposting to other university and external opportunities, and help with developing your CV, preparing job applications and getting ready for interviews.

FIND OUT MORE

tees.ac.uk/studentfutures

BE LOCAL

MIDDLESBROUGH, YORKSHIRE AND THE NORTH EAST

There's something on offer right through the week in Middlesbrough, whatever your taste. As well as an emerging collection of independent retailers and a unique cultural offer, we have all the shops, restaurants, cinemas, pubs, clubs, sports and museums you would expect.

Don't miss out.



Middlesbrough Mela



Middlehaven



Statue of George Hardwick,
England footballer,
manager and coach

Middlesbrough Institute of Modern Art (MIMA)



CULTURE

Middlesbrough Institute of Modern Art (MIMA), part of the University, has a programme that plays a key role in the cultural ecology of the North East and is internationally recognised for its mission. It integrates exhibitions and collection displays with community-focused initiatives.

Middlesbrough is also home to two museums, the Captain Cook Birthplace Museum, dedicated to the pioneering navigator Captain James Cook, and the Dorman Museum, which houses the history of the town.

The Middlesbrough Empire hosts three floors dedicated to style and music. Regular club nights and daytime events include Sumo, Lit and Milk.

Middlesbrough Town Hall has undergone a £7.7m restoration project and is great for music (rock and pop, jazz, rhythm and blues, classical and folk).

Middlesbrough Theatre is full of drama, comedy and musicals.

ARC, Stockton Art Centre gives you all the above and more.

ARCHITECTURE

Centre Square is surrounded by Middlesbrough Institute of Modern Art (MIMA), the town hall, civic centre and central library, and houses the impressive Bottle of Notes sculpture.

Middlehaven, the regenerated dockside incorporates the Boho Zone (digital and creative businesses), Manhattan Gate waterside offices and *Temenos*, a £2.7m public-art sculpture by Anish Kapoor. Plus Middlesbrough Transporter Bridge, the second largest transporter bridge in the world.



Centre Square



Bottle of Notes



Boho 5



Albert Park

FITNESS

Albert Park, enjoy 100 acres of quiet green space just a stone's throw from the University with the free 5km parkrun every Saturday morning. Middlesbrough has seven parks awarded Green Flag status for high standards.

Middlesbrough Sports Village, this £21m development includes an International Association of Athletics Federations stadium, Olympic-sized cycling velodrome, outdoor track, skatepark, court sports, 4G pitches and more.

➤ middlesbrough.gov.uk/activemiddlesbrough



LOCAL LIFE

Middlesbrough offers a huge variety of eateries and independent shops, most notably clustered on fashionable Baker and Bedford Streets, and is becoming renowned for its unique, independent offer.

Well-known high street names, such as Flannels, Topshop, Primark and Bistrot Pierre, are recognising that Middlesbrough is attracting huge investment.

Southfield Road is partly pedestrianised and runs through the campus. It has student focused bars and pubs, and outdoor drinking and eating spaces.

The **four shopping centres** and numerous shopping streets are home to 23 out of 24 of the top high-street brands expected in any city shopping centre.

Walk out of the campus onto **Linthorpe Road** and browse unique boutiques and designer clothing store Psyche. There's also a selection of Chinese, Italian, Indian and continental cafés and restaurants.

TEESSIDE THROUGH AND THROUGH

Local industry

Our modern-day strengths lie in renewable energy, digital technology activities, science and the service sector. Teesside remains an important centre for heavy industry with a strong history of making steel and manufacturing chemicals.

Middlesbrough Football Club

The Boro have played at the Riverside Stadium since 1995, their third ground since turning professional in 1889. It has a capacity of over 30,000.

CITY LIFE

> **Durham** is well known for its 11th-century cathedral and castle, designated as a UNESCO World Heritage Site.

> **Newcastle upon Tyne** is a great city for shoppers, culture and nightlife.

> **York** attracts international tourists all year round with its castle, museums, York Minster, medieval streets and National Railway Museum.

All are within an hour of Middlesbrough.

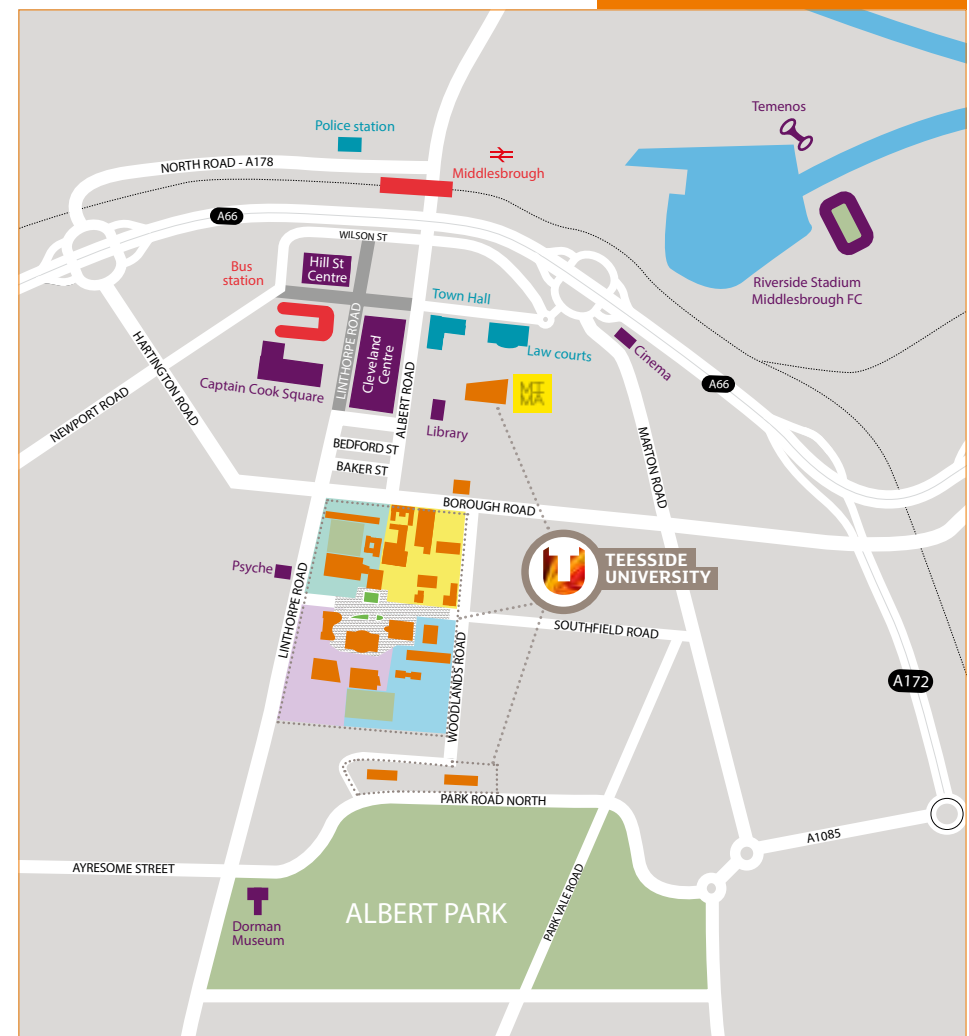


Baker Street

HOW TO FIND US



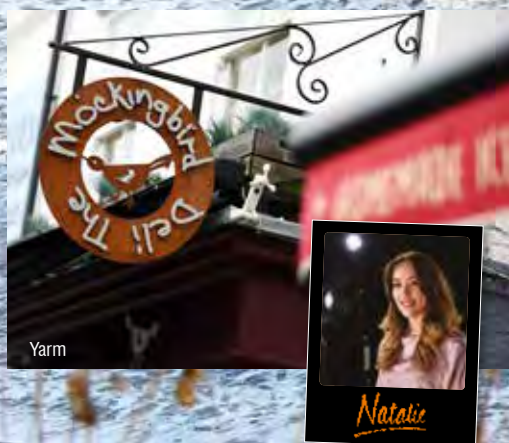
MIDDLESBROUGH TOWN CENTRE





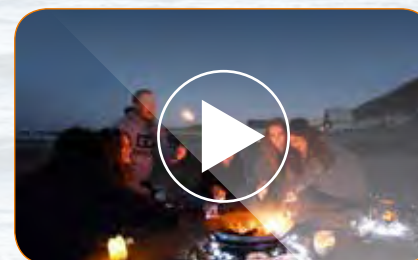
BE ADVENTUROUS

**DISCOVER MORE OF MIDDLESBROUGH
AND THE REGION**



Follow our current students as they take you to some of their favourite places in the Tees Valley.

Watch four short videos of our students, filmed on location in Middlesbrough and the Tees Valley.



tees.ac.uk/discover

FIND OUT MORE

tees.ac.uk/discover

BE AT HOME

STUDY HERE AND LIVE ON CAMPUS

- > Do you want a halls' experience or shared house?
- > Would you prefer en-suite accommodation?
- > Do you need disabled access?
- > Do you have a specific budget?

At Teesside University we have accommodation from £58 a week.

| | | | | |
|---|--|--|---|---|
|  <p>1,000 rooms on campus</p> |  <p>En suites optional</p> |  <p>Free student contents insurance</p> |  <p>Onsite laundry facilities</p> | <p>Free internet, heating, lighting</p>  <p>100mb</p> |
|  <p>40 WEEK</p> <p>40-week rental agreements</p> |  <p>Live-in student wardens</p> |  <p>24/7 campus security</p> |  <p>Communal kitchens and dayrooms</p> |   |

YOUR HOME FROM HOME

Central Halls

Central Halls is split into smaller groups of apartments from four to eight beds. On the doorstep of the University, it's a two-minute walk to the centre of town. It also has a cinema, games and chill-out rooms.

| | |
|--------------------|-------|
| Total residencies: | 75 |
| Total rooms: | 385 |
| En suite: | yes |
| Disabled access: | yes |
| Cost each week: | £115* |



East Parkside Village

East Parkside Village is on the southern edge of the campus close to Middlesbrough's Albert Park. Made up of houses and flats with shared facilities, it's an ideal place to make friends.

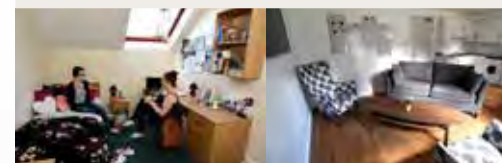
| | |
|--------------------|----------|
| Total residencies: | 14 |
| Total rooms: | 108 |
| En suite: | no |
| Disabled access: | yes |
| Cost each week: | £70-£75* |



West Parkside Village

West Parkside Village is aimed at students who want a quieter space. Priority is given to postgraduates or students whose course involves work placements. There is also some on-site parking – you need to apply for this and are charged separately.

| | |
|--------------------|------|
| Total residencies: | 16 |
| Total rooms: | 80 |
| En suite: | no |
| Disabled access: | no |
| Cost each week: | £80* |



Woodlands Halls

Woodlands Halls is split into a number of clusters, giving a real neighbourhood feel – it allows you to enjoy your own private space but still feel part of a community.

| | |
|--------------------|------|
| Total residencies: | 7 |
| Total rooms: | 252 |
| En suite: | yes |
| Disabled access: | yes |
| Cost each week: | £85* |



King Edward's Square

£2.5M REFURBISHMENT IN 2018

With a village-square-feel, King Edward's Square houses are set around a central green – really handy for lectures, the Library, Students' Union and town centre.

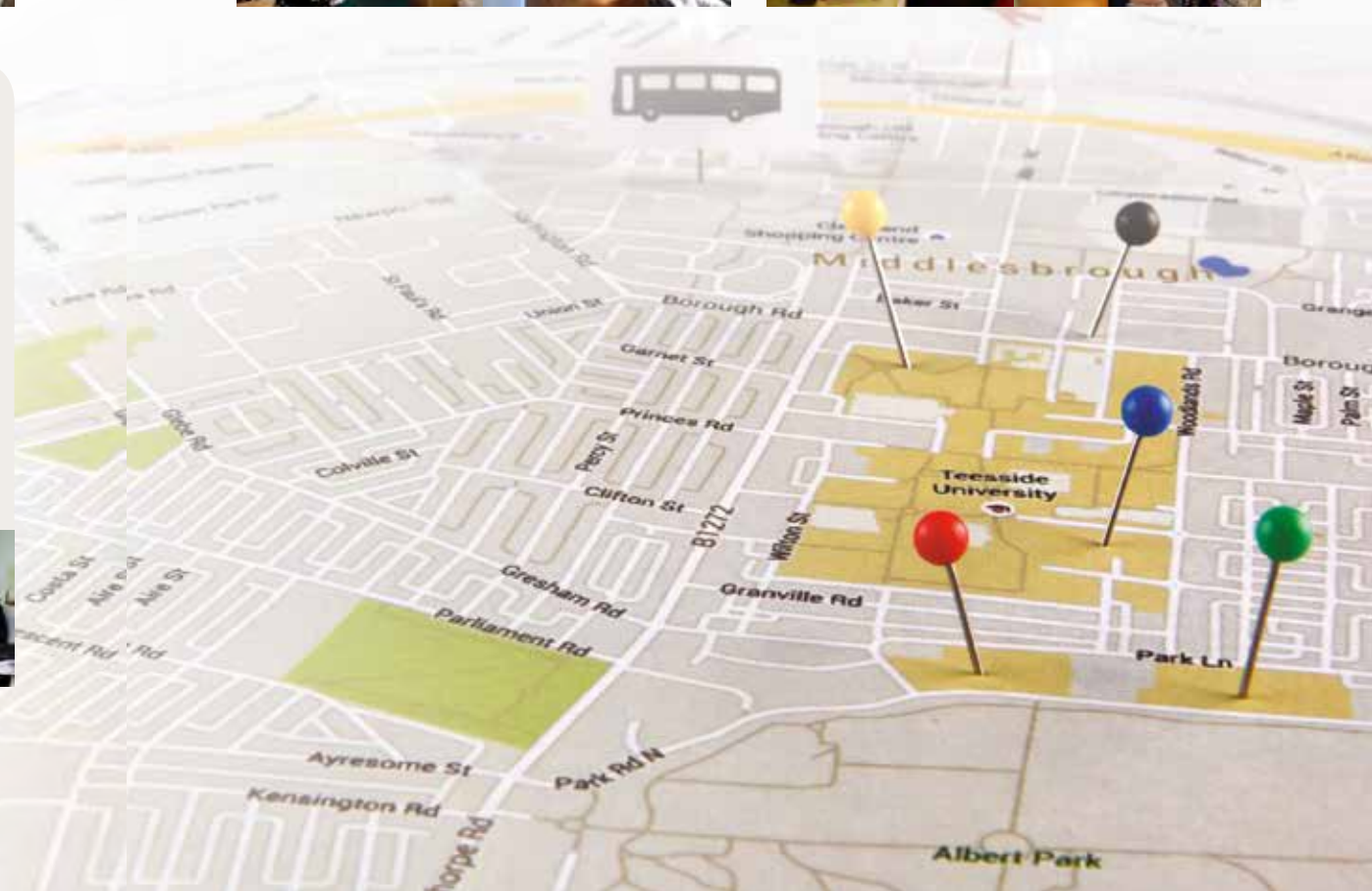
| | |
|----------------------------|-------|
| Total residencies: | 15 |
| Total rooms: | 70 |
| En suite/private bathroom: | yes |
| Disabled access: | no |
| Cost each week: | £100* |



Parkside Hall

Set on the southern edge of the campus facing Middlesbrough's Albert Park, Parkside Hall has a range of single and shared rooms, each with a hand basin.

| | |
|--------------------|----------|
| Total residencies: | 1 |
| Total rooms: | 85 |
| En suite: | no |
| Disabled access: | no |
| Cost each week: | £58-£65* |



* Costs for 2018-19 entry. Check online for our most up-to-date fees at tees.ac.uk/accommodation



BE INVOLVED



Your Students' Union is right at the heart of student life.

Whoever you are and wherever you're coming from, Teesside University Students' Union (TUSU) has something for you. Our students use it day and night to eat, drink and socialise, get independent advice from Students' Union Student Support (SUSS), widen their student experiences through SU Activities and become more employable.

The Love It Lounge and SU Studio both provide a modern and vibrant space for private study, group work and student meetings.

- > The Students' Union is led by students for students with three student presidents elected every year to collectively lead the SU.
- > You are a member as soon as you enrol on a course. There are no forms to fill out, no money to pay in advance and no membership card required.
- > It's not just for the social side. TUSU is your one-stop shop for free, independent help from fully qualified and professional welfare advisers on problems and issues around finance, housing, immigration and more.
- > There are lots of ways to get involved no matter how much time you can spare – sports clubs, societies, volunteering or representing students as a School or course representative.
- > All profits are put back into further improving services, facilities and events for all students.

©Lauren Close/Ben Townshend



©Lauren Close/Ben Townshend



©Lauren Close/Ben Townshend

Freshers

Your first week at University is jam packed with activities, events and support. You can load up on freebies and get more information on joining sports clubs and societies, help finding part-time work and general information to help you settle into student life. There's also a great range of entertainment every night including:

- > group activities and trips around the North East
- > club and theme nights
- > live appearances from big names – these have previously included the likes of Calvin Harris, Greg James, Example, Scott Mills, Lethal Bizzle, Sean Walsh, Basshunter, Nick Grimshaw and Chris Stark
- > hilarious comedy nights featuring leading stand-up comics and our ever popular hypnotist show
- > student socials.



©Lauren Close/Ben Townshend

FIND OUT MORE

- facebook.com/teessidesu
- twitter.com/teessidesu
- instagram.com/teessideu
- tees-su.org.uk



Whether you just like to keep fit, play a sport or you're an elite athlete, you will find what you are looking for at Teesside University.

BE ACTIVE



Our gym

> **Olympia** – top-of-the-range sport and exercise labs, a temperature-controlled environmental chamber, 500-spectator sports hall for major tournaments, 4G floodlit artificial turf pitch and a climbing wall.

> **Fitness on campus** – cardiovascular and resistance fitness and free weights areas, sauna, a sprint track, multi-purpose studios and a specialist treatment area.



Our 4G pitch



On-campus gym

> **Countryside** – there are many beautiful places for walking, running, mountain biking and horse riding in the North York Moors and along the beautiful North Yorkshire coastline. Or surfing at nearby Saltburn.

> **Health and wellbeing** – drop-in sessions, short programmes and workshops are available. Experience complementary therapy treatment or find out more about health issues.

> **Off-campus facilities** – enjoy our 60-acre Saltersgill sports ground, River Tees Water Sports Centre for rowing, canoeing and kayaking, and the nearby Tees Barrage with its world-class white water rafting course. Or choose from local tennis, swimming, water sports, athletics, cycling, pool and snooker facilities.

> **BeSporty sessions** – your opportunity to try something new if you have limited time and want to get fit and active and make new friends. Sessions include netball, volleyball, jogging, just play football and futsal, yoga, climbing, kayaking, light saber fencing, female physical activity sessions and casual badminton. We also have a number of campus leagues for you to enter including 7v7 football, 5v5 football, badminton, netball and 4v4 volleyball.

> **Athlete support schemes** – we support athletes who can demonstrate exceptional international potential or have the ability to contribute to success in the British University and College Sport programme. We work together with the Students' Union and our academic Schools to provide a bespoke programme of support, tailored to your needs.

> **Elite athlete scheme** – access state-of-the-art equipment and expertise. This scheme is open to students who are athletes at international level or with exceptional international potential.

> **Adventure support** – take part in organised adventure activities including walking, climbing, kayaking, horse riding, surfing, mountain biking, mountaineering and gorge walking. We run UK National Governing Body outdoor adventure sport training and sport-specific skill programmes.

> **Sports clubs** – keep fit, be part of a team or meet new people at one of the wide range of sports clubs run by the Students' Union. You can also get help and support with wellbeing issues including mental and physical health, and personal safety.

> **Sports Injury Clinic** – staffed by Teesside sports therapy graduates who are registered with the Society of Sports Therapists, plus team members with specific expertise, including dieticians and sports psychologists.

FIND OUT MORE tees.ac.uk/sport



Tees Barrage



Captain Cook's Monument

BE INFORMED

FEES AND FUNDING EXPLAINED

We can tell you the price of a degree, but that's not the same as its value. You're making an investment in your future and turning your dreams into reality.



FEES FOR FULL-TIME STUDENTS

In 2019, a full-time undergraduate degree at Teesside costs £9,250* a year for UK and EU students.

Full-time foundation degrees, higher national diplomas and other qualifications below degree level cost £6,150* a year. You can find fees information for full-time and part-time undergraduate courses on each individual course page in the subject brochures and on our website.

FIND OUT MORE tees.ac.uk/fees

Learn now, pay later

- > **Tuition fee loan** – you can apply to the Student Loan Company (SLC) for a tuition fee loan to cover the full cost of your fees each year.
- > **Maintenance loan** – as a full-time student you can apply to the SLC for a maintenance loan to help with your living costs (food, accommodation and travel). The amount you're entitled to depends on your household income, where you live and where you study.
- > **Repayments** – you pay back your student loan (tuition and maintenance) when you are earning over £25,000 a year. Repayment is 9% of your income above £25,000, so the amount repaid each month depends on how much you earn.

tees.ac.uk/funding

Fees for part-time students

The standard fee for part-time undergraduate degree courses starting in September 2019 ranges from £3,960* to £4,500* for 120 credits.

You can find 2020 fees information for part-time undergraduate courses on each individual course page.

- > **Government loan from the SLC** – if you are an eligible new student enrolling on a designated higher education programme and studying at least 30 credits a year, you can apply for a government loan. Government loans ensure that undergraduate education at Teesside University remains free at the point of entry and you only make repayments if you are earning over £25,000 a year. You start repaying four years after the start of your course, even if you are still studying.
- > **Employer support** – employers may be able to pay part or all of your fees upfront if you ask them. You get to study for a qualification that will improve your ability to do your job and advance your career prospects, and your employer benefits from a better-qualified, more productive and motivated employee.
- > **Maintenance loans** – part-time degree students can apply for a maintenance loan for living costs dependant on their area of study. Check online for eligibility and the maximum loan amount.

Fees for international students

The annual fee for new international students (non-EU) on a full-time course in 2018-19 is:

- > **£9,750*** – for an international foundation programme starting in September (120 credits)
- > **£11,825*** – for a full-time undergraduate course.

If you are an international (non-EU) student funding your own studies, you must pay a deposit of £4,000* and must have met all entry requirements before we issue your letter with your confirmation of offer details.

tees.ac.uk/international/fees

* These figures are correct for the academic year 2019-20 entry – please check online for 2020-21 entry costs.

Teesside University funding

We offer a number of discounts, awards and scholarships for new full-time home and EU undergraduate students.

- > **Marjorie Hearnshaw scholarship*** – if you live within the Tees Valley you might qualify for a £3,000 cash award.
- > **Dr Ken Home scholarship*** – £5,000 award available to local students applying to an engineering-related undergraduate course.
- > **Brittan scholarship*** – £7,500 available to students applying to our School of Computing, Media & the Arts or School of Science, Engineering & Design.
- > **Teesside Sanctuary award*** – covers course fees and contributes towards study costs through a learning bursary for up to five Teesside University students that are seeking asylum.
- > **Professor Leni Oglesby scholarship*** – £1,000 available if you live outside the Tees Valley and select Teesside University as your firm choice for a nursing, midwifery or health professions degree.
- > **Success Photography scholarship*** – two awards worth £2,500 if you are applying to study BA (Hons) Film and Television Production or BA (Hons) Fine Art full-time.

tees.ac.uk/scholarships

* Eligibility criteria apply

Care leavers' bursary

We provide a care leavers' bursary of £1,000 a year for those students who come to us from a care background.

Other Teesside University benefits

- > **Placement year fee waiver** – if you study an undergraduate course with a placement year and pay UK/EU fees, you receive a full fee waiver for your placement year.
- > **Integrated master's discount** – if you study an integrated master's course (MComp, MEng or MSci) and pay UK/EU fees, you pay a discounted fee of £5,050 in your final year.
- > **Elite Athletes' Bursary** – a comprehensive support package tailored to your needs and open to all athletes at international level or with exceptional international potential.



SCHOLARSHIPS AND FUNDING PACKAGES AT A GLANCE

Figures correct for 2019-20 entry, for the most up-to-date information

tees.ac.uk/funding

| Funding | Tuition fee loan (SLC) | Maintenance loan (SLC) | Brittan scholarship | Marjorie Hearnshaw scholarship | Teesside Sanctuary award | Leni Oglesby scholarship | | Dr Ken Home scholarship | Success Photography scholarship | Childcare grant | Parent's leaving allowance | Adult dependants' grant | Disabled students' allowance |
|-------------------------------------|--|---|--|---|---|--|--|---|---|--|--|--|--|
| How much is it worth? | £9,250 a year for full-time students £6,150 a year for full-time foundation year students | Up to £8,944 if you are living away from home Up to £7,529 if you are living in your parental home | £7,500 | £3,000 cash for new entrants on a course where the normal fee is at least £9,250 a year | Covers course fees and contributes towards travel | £1,000 cash for new entrants on a course where the normal fee is at least £9,250 a year | | £5,000 cash for new entrants on a course where the normal fee is at least £9,250 a year | £2,500 | Up to 85% of childcare costs | Up to £1,716 a year | Up to £3,007 a year | N/A |
| Is it based on my household income? | No | Partially | Yes | No | No | No | | No | No | Yes And your child(ren) must be in registered or approved childcare | Yes And you must be a parent studying full time | Yes | No Support is determined by need not income |
| Who is eligible? | See website for details tees.ac.uk/funding | See website for details tees.ac.uk/funding | Available to School of Computing, Media & the Arts or School of Science, Engineering & Design students who make Teesside University their first choice through UCAS see web for criteria | Available to Tees Valley residents (minimum two years) | See website for criteria tees.ac.uk/scholarships | Available to all students who live outside the Tees Valley who select Teesside University as their firm choice for a nursing, midwifery or health professions degree | | Available to Tees Valley residents (minimum two years) who have made Teesside University their firm choice through UCAS on a science and engineering course | See website for criteria tees.ac.uk/scholarships | See website for details tees.ac.uk/funding | See website for details tees.ac.uk/funding | Full-time students in higher education with an adult who depends on them financially | See website for details tees.ac.uk/funding |
| Are part-time students eligible? | Yes | Yes Pro-rata amount, see web for details | No | No | No | No | | No | No | No | No | No | Yes |
| How many are available? | Available to all eligible students | Available to all eligible students | Two | Five | Three | Five | | Two | Two | All eligible students receive support | All eligible students receive support | All eligible students receive support | All eligible students receive support |
| How will the money be paid? | Direct to Teesside University | In three instalments to your bank or building society account | Direct to your bank or building society account staggered over the duration of the course | Direct to your bank or building society account | Fee waiver for course fees, travel bursary paid after enrolment | Direct to your bank or building society account | | Direct to your bank or building society account, staggered over full programme of study | Direct to your bank or building society account staggered over the duration of the course | Direct into your bank/building society account | Direct into your bank/building society account | Paid in three instalments (one at the start of each term) directly into your bank/building society account | Determined by needs assessment |
| Does it have to be paid back? | Yes but only after you've finished university and are earning over £25,000 a year | Yes but only after you've finished university and are earning over £25,000 a year | No | No | No | No | | No | No | No | No | No | No |
| Do I need to apply? | Yes Through Student Finance England Wales Northern Ireland Scotland | Yes Through Student Finance England Wales Northern Ireland Scotland | Yes Eligible candidates are contacted and invited to complete an application form | Yes Eligible candidates are contacted and invited to complete an application form | Yes Eligible candidates complete an application found on our website | Yes Eligible candidates are contacted and invited to complete an application form | | Yes Eligible candidates are identified by the School during interview and invited to complete an application form | Yes Eligible candidates are invited to apply | Yes When you apply for your student finance | Yes When you apply for your student finance | Yes When you apply for your student finance | Yes |

BE FLEXIBLE

Study part time, from short bites of learning to an undergraduate degree.

You might want to return to learning if you're looking for a promotion that needs a qualification, want to change your career direction, or just to enjoy the personal satisfaction of learning.

Degree Apprenticeships

Designed in partnership with employers, degree apprenticeships offer it all – a higher education qualification, a salary, and invaluable practical experience and employment skills. They can take anywhere between two and five years to complete, depending on the subject and apprentices spend approximately 20% of their time on study, and 80% of their time at work. Whether you're a school or college leaver looking for entry into work, an employee wanting to develop new skills, or an employer looking to upskill your staff – a degree apprenticeship could be the answer to your needs.

Or you might just want to enhance your current skills, knowledge and experience through a range of continuing professional development courses or Nursing, Midwifery and Health Professions-specific continuing workforce development courses.

👉 tees.ac.uk/health

We offer part-time courses at all levels, and the staff, the support, the facilities and the qualification you earn are the same as you could expect if you studied full time.

We prepare you to succeed at work.

- > **Your career** – our emphasis is on professionalism, transferable skills and developing the knowledge and confidence to succeed.
- > **Your course** – study the type of course that works for you, from short taster courses, certificates and diplomas, to degrees at foundation, undergraduate and postgraduate level. We also provide research opportunities and a work-based studies programme, which enables you to design your own part-time course.
- > **Your learning** – some courses run in the evening, some during the day or over an afternoon. A number of modules pack your learning into a few days, while others incorporate open and distance learning.
- > **Your fees** – you can pay your course fees by applying for a tuition fee loan from Student Finance England or maybe approach your employer to see if they will support your study – either with money, time or both.



You can study part time at both our Middlesbrough and Darlington campuses, as well as at our partner colleges in Darlington, Hartlepool, Redcar and Stockton.

Darlington College

Campus code 1, T: 01325 503050

Hartlepool College of Further Education

Campus code 5, T: 01429 857199

Redcar & Cleveland College

Campus code 6, T: 01642 473132

Stockton Riverside College

Campus code 3, T: 01642 865400

Campus codes apply to full-time applications through UCAS. Apply for part-time courses through the course page on our website.

Choose the course you're interested in, check that it's available part time and apply to us directly online.

Visit one of our part-time study open days in 2019

6 March, 2.00pm - 6.00pm

10 July, 2.00pm - 6.00pm

4 September, 2.00pm - 6.00pm

BOOK NOW 📍 tees.ac.uk/opendays

Summer and Winter University

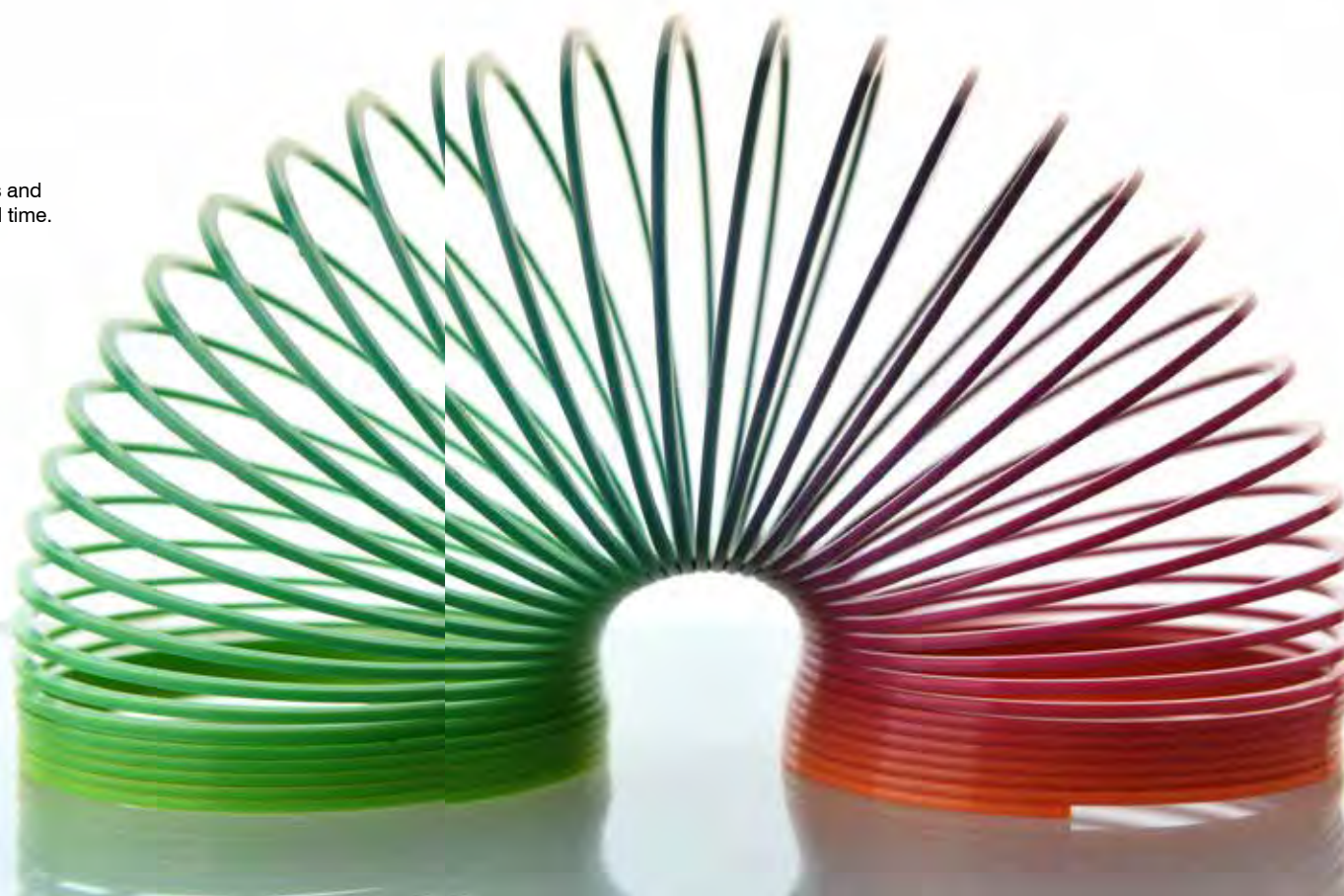
Ready to try something new?

A Summer or Winter University course boosts your confidence and could be your next step towards gaining a degree. Choose from a number of short courses in subjects ranging from law to history, creative writing to forensic science, psychology to maths.

If you enrol on a course of over 60 credits afterwards you get your Summer or Winter University fees reimbursed.

👉 tees.ac.uk/summeruniversity

👉 tees.ac.uk/winteruniversity





BE INTERNATIONAL

At Teesside University we take a world view, which is why international students from over 100 countries have graduated through our programmes.

QUALITY TEACHING

- > We recruit staff from all over the world, providing an international learning experience for our students.
- > We deliver programmes globally, in countries such as Malaysia, Singapore, the Czech Republic and Hong Kong.

EXCELLENT JOB PROSPECTS

- > Our graduates are working all over the world for companies such as the BBC, Aston Martin, Disney, HSBC, United States Airforce Research Lab, Vodafone, Microsoft, the NHS, Rolls-Royce and Framestore.
- > Benefit from internationally recognised British qualifications and the chance to gain practical experience working in business and industry.



EXCEPTIONAL VALUE

- > We offer a range of generous scholarships and special discounts for international students, to support your study and help you settle into your new location.
- 🔗 tees.ac.uk/international/scholarships
- > We guarantee you a place in our halls of residence if you firmly accept a programme offer for accommodation before 30 April.
- > You can arrange to use our meet and greet service – we pick you up from Durham Tees Valley or Newcastle airports and take you straight to your accommodation for free.

OUTSTANDING SUPPORT

- > We're accredited by the British Council as an English language training provider and offer an English café on campus.
- > Our international student advisers can provide guidance about entering the UK, applying for a visa, finance, residency and work permits.

FIND OUT MORE

🔗 tees.ac.uk/international



BE TEESSIDE

Meet just a handful of our successful graduates who have gone on to work across the globe.

FIND OUT MORE

tees.ac.uk/international

We value our graduates and are proud of their achievements. We have more than 100,000 alumni from over 100 different countries – some are at the top of their industry.



BRAZIL

Adam Graham

Business Intelligence
Leader, Latin America
Procter & Gamble

BSc (Hons) Business
Computing, 2006



USA

Ruth Massingill

Associate Chair and
Professor
Sam Houston State
University

PhD Management, 2011

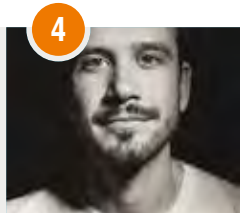


SWEDEN

**Lena Ljungqvist
Starkman**

Co-operation Co-
ordinator and Councillor
Socialförvaltningen

BSc (Hons) Criminology,
2001



FRANCE

Maxime Bicard

Senior Project Manager
Louis Vuitton

BA (Hons) Computer
Games Design, 2010



UAE

John Jeffers

UK Group Director, SNC
Lavalin Abu Dubai

MBA, 1999



NORWAY

Ina Pettersen

Director of HR Nordics
Cognizant

BA (Hons) Human
Resources Management,
2003



JAPAN

Desmond McPartland

Managing Director
Black Bear Properties

BA (Hons) Interior Design,
1990



AUSTRALIA

Steve Graham

Data Architect and
Business Intelligence
Consultant

BSc (Hons) Computer
Science, 1986

“

Encourage your child but also take a step back – it's their decision. It's very hard to let go, to let them make the decisions, but you have to – and give them the support needed to help them.

Pam Clements, parent

BE ENCOURAGING

PARENTS AND CARERS

Support your son or daughter on their journey to university.

- > Sign up for updates
- > Download our *Parent Place* magazine
- > Gain more insight into the student journey with our interactive activities
- > Learn more about the application process

🔗 tees.ac.uk/parents

TEACHERS AND ADVISERS

Let our student recruitment team support you and your students.

- > Subject taster days
- > Interactive progression activities
- > Motivational visits at your school
- > Open days on campus
- > Speakers into schools and colleges
- > Subject conferences
- > Teachers and advisers' continuing professional development sessions

🔗 tees.ac.uk/studentrecruitment



Above: David Clements with his parents, Andrew and Pam Clements: at a Teesside University open day in 2014. Below: David, Andrew and Pam at David's graduation in 2017 – he graduated with a BA (Hons) Computer Character Animation.



INDEX

A series of six subject brochures complement this prospectus. Use our coded key to find your course brochures.



ARTS & HUMANITIES

- > DESIGN
- > ENGLISH & CREATIVE WRITING
- > HISTORY
- > MEDIA & COMMUNICATIONS
- > THE ARTS



HEALTH & SPORT

- > NURSING, MIDWIFERY & HEALTH PROFESSIONS
- > SPORT & EXERCISE



BUSINESS

- > BUSINESS, ACCOUNTING, MARKETING & ENTERPRISE



SCIENCE, TECHNOLOGY, ENGINEERING & MATHS

- > CRIME, FORENSIC & INVESTIGATIVE SCIENCES
- > ENGINEERING
- > HOME DESIGN, CONSTRUCTION & THE BUILT ENVIRONMENT
- > LIFE & PHYSICAL SCIENCES
- > MATHEMATICS



COMPUTING, GAMES & ANIMATION

- > COMPUTER ANIMATION & VISUAL EFFECTS
- > COMPUTER GAMES
- > COMPUTING & WEB



SOCIAL SCIENCES

- > CRIMINOLOGY & SOCIOLOGY
- > EDUCATION, EARLY CHILDHOOD & YOUTH
- > LAW, POLICING & INVESTIGATION
- > PSYCHOLOGY
- > SOCIAL WORK

2D Animation, BA (Hons)

A

Accounting and Finance, BA (Hons)
Aeronautical Engineering, HND
Aeronautical Engineering (Top-up), BEng Tech (Hons)
Aerospace Engineering, BEng (Hons)
Aerospace Engineering (with Foundation Year), BEng (Hons)
Aerospace Engineering, MEng (Hons)
Aerospace Engineering with Industry, BEng (Hons)
Aerospace Engineering with Industry (with Foundation Year), BEng (Hons)
Aerospace Engineering with Industry, MEng (Hons)
Airline and Airport Management (Top-up), BA (Hons)
Animal Science and Welfare, BSc (Hons)
Animal Science and Welfare (with Foundation Year), BSc (Hons)
Applied Sport and Exercise (Top-up), BSc (Hons)
Aviation and Tourism, FdA

B

Biochemistry, BSc (Hons)
Biochemistry (with Foundation Year), BSc (Hons)
Biological Sciences, BSc (Hons)
Biological Sciences (with Foundation Year), BSc (Hons)
Biomedical Science, BSc (Hons)
Biomedical Science (with Foundation Year), BSc (Hons)
Broadcast Media Production, BA (Hons)
Building Services Engineering, HNC
Building Studies, HNC
Business and Computing, International Foundation Year
Business and Cybersecurity, BA (Hons)
Business and Data Management, BA (Hons)
Business and Enterprise (Top-up), BA (Hons)
Business Enterprise and Innovation, BA (Hons)
Business Enterprise and Innovation (with Foundation Year), BA (Hons)
Business and Games Design, BA (Hons)
Business Finance and Accounting (Top-up), BA (Hons)
Business Management, BA (Hons)
Business Management (with Foundation Year), BA (Hons)
Business Management, FdA
Business with Accountancy, BA (Hons)
Business with Accountancy (with Foundation Year), BA (Hons)
Business with Fashion, BA (Hons)
Business with Fashion (with Foundation Year), BA (Hons)
Business with Marketing, BA (Hons)
Business with Marketing (with Foundation Year), BA (Hons)

C

Chartered Manager, Degree Apprenticeship
Chemical Engineering, BEng (Hons)
Chemical Engineering, HNC
Chemical Engineering, MEng (Hons)
Chemical Engineering by Flexible Open Learning, HNC
Chemical Engineering by Flexible Open Learning, HND
Chemical Engineering (with Foundation Year), BEng (Hons)
Chemical Engineering with Industry, BEng (Hons)
Chemical Engineering with Industry (with Foundation Year), BEng (Hons)
Chemical Engineering with Industry, MEng (Hons)
Chemistry, BSc (Hons)
Chemistry (with Foundation Year), BSc (Hons)
Childhood and Youth Studies, BA (Hons)
Childhood and Youth Studies (with Foundation Year), BA (Hons)
Civil Engineering, Degree Apprenticeship
Civil Engineering, BEng (Hons)
Civil Engineering, MEng (Hons)
Civil Engineering, HNC
Civil Engineering (Top-up), BEng Tech (Hons)
Civil Engineering (with Foundation Year), BEng (Hons)
Civil Engineering with Industry, BEng (Hons)
Civil Engineering with Industry (with Foundation Year), BEng (Hons)
Civil Engineering with Industry, MEng (Hons)
Comics and Graphic Novels, BA (Hons)
Comics and Graphic Novels (with Foundation Year), BA (Hons)
Computer and Digital Forensics, BSc (Hons)
Computer and Digital Forensics (with Foundation Year), BSc (Hons)
Computer Animation, BA (Hons)
Computer Animation (with Foundation Year), BA (Hons)
Computer Character Animation, BA (Hons)
Computer Character Animation (with Foundation Year), BA (Hons)
Computer Games Art, BA (Hons)
Computer Games Art (with Foundation Year), BA (Hons)
Computer Games Design, BA (Hons)
Computer Games Design (with Foundation Year), BA (Hons)
Computer Games Design, MComp (Hons)
Computer Games Programming, BSc (Hons)
Computer Games Programming (with Foundation Year), BSc (Hons)
Computer Games Programming, MComp (Hons)
Computer Science, BSc (Hons)
Computer Science (with Foundation Year), BSc (Hons)
Computer Science, MComp (Hons)
Computing, BSc (Hons)

| | | | |
|---|---|---|---|
| Computing (with Foundation Year), BSc (Hons) | ● | Electrical and Electronic Engineering by Flexible Open Learning, HND | ● |
| Concept Art, BA (Hons) | ● | Electrical and Electronic Engineering (Top-up), BEng Tech (Hons) | ● |
| Concept Art (with Foundation Year), BA (Hons) | ● | Electrical/Electronic Technical Support Engineer, Degree Apprenticeship | ● |
| Construction Management, BSc (Hons) | ● | Electrical and Electronic Engineering with Industry, BEng (Hons) | ● |
| Construction Management (with Foundation Year), BSc (Hons) | ● | Electrical and Electronic Engineering with Industry (with Foundation Year), BEng (Hons) | ● |
| Control/Technical Support Engineer, Degree Apprenticeship | ● | Electrical and Electronic Engineering with Industry, MEng (Hons) | ● |
| Counselling, FdA | ● | Embedded Electronic Systems Design and Development Engineer, Degree Apprenticeship | ● |
| Creative Writing, BA (Hons) | ● | English and Creative Writing, BA (Hons) | ● |
| Creative Writing (with Foundation Year), BA (Hons) | ● | English and Creative Writing (with Foundation Year), BA (Hons) | ● |
| Crime and Investigation, BSc (Hons) | ● | English Studies, BA (Hons) | ● |
| Crime and Investigation (with Foundation Year), BSc (Hons) | ● | English Studies (with Foundation Year), BA (Hons) | ● |
| Crime Scene Science, BSc (Hons) | ● | Environmental Science, BSc (Hons) | ● |
| Crime Scene Science (with Foundation Year), BSc (Hons) | ● | Environmental Science (with Foundation Year), BSc (Hons) | ● |
| Criminology, BSc (Hons) | ● | | |
| Criminology (with Foundation Year), BSc (Hons) | ● | | |
| Criminology and Sociology, BSc (Hons) | ● | | |
| Criminology and Sociology (with Foundation Year) BSc (Hons) | ● | | |
| Criminology with Law, BSc (Hons) | ● | | |
| Criminology with Law (with Foundation Year), BSc (Hons) | ● | | |
| Criminology with Psychology, BSc (Hons) | ● | | |
| Criminology with Psychology (Foundation Year), BSc (Hons) | ● | | |
| Criminology with Youth Studies, BSc (Hons) | ● | | |
| Criminology with Youth Studies (With Foundation), BSc (Hons) | ● | | |
| Cybersecurity and Networks, BSc (Hons) | ● | | |
| Cybersecurity and Networks (with Foundation Year), BSc (Hons) | ● | | |
| D | | | |
| Dental Hygiene and Dental Therapy, BSc (Hons) | ● | | |
| Dental Nurse Practice, Cert HE | ● | | |
| Design and Development Engineer, Degree Apprenticeship | ● | | |
| Design for the Creative Industries, FdA | ● | | |
| Diagnostic Radiography, BSc (Hons) | ● | | |
| Digital and Technology Solutions (Web Engineering), Degree Apprenticeship | ● | | |
| E | | | |
| Early Childhood Studies, BA (Hons) | ● | | |
| Early Childhood Studies (with Foundation Year), BA (Hons) | ● | | |
| Early Years Sector Endorsed, FdA | ● | | |
| Economics, BA (Hons) | ● | | |
| Education and Training, BA (Hons) | ● | | |
| Education and Training, Certificate in Education | ● | | |
| Education and Training (Supporting Teaching and Learning), BA (Hons) | ● | | |
| Education Studies, BA (Hons) | ● | | |
| Education Studies (with Foundation Year), BA (Hons) | ● | | |
| Electrical and Electronic Engineering, BEng (Hons) | ● | | |
| Electrical and Electronic Engineering (with Foundation Year), BEng (Hons) | ● | | |
| Electrical and Electronic Engineering, HNC | ● | | |
| Electrical and Electronic Engineering, HND | ● | | |
| Electrical and Electronic Engineering, MEng (Hons) | ● | | |
| Electrical and Electronic Engineering by Flexible Open Learning, HNC | ● | | |

| | |
|---|---|
| Graphic Design and Illustration, BA (Hons) | ● |
| Graphic Design and Illustration (with Foundation Year), BA (Hons) | ● |
| Graphic Design with Marketing, BA (Hons) | ● |
| Graphic Design with Marketing (with Foundation Year), BA (Hons) | ● |

H

| | |
|--|---|
| Health, Foundation Year | ● |
| Health Informatics, BSc (Hons) | ● |
| Health Sciences, BSc (Hons) | ● |
| Health Sciences, Cert HE | ● |
| Health Sciences (with Foundation Year), Cert HE | ● |
| Health Sciences (with Foundation Year), BSc (Hons) | ● |
| Healthcare Assistant Practitioner (with Foundation Year), BSc (Hons) | ● |
| Health, Wellbeing and Social Support, FdSc | ● |
| History, BA (Hons) | ● |
| History (with Foundation Year), BA (Hons) | ● |
| Human Biology, BSc (Hons) | ● |
| Human Biology (with Foundation Year), BSc (Hons) | ● |
| Human Resource Management, BA (Hons) | ● |
| Human Resource Management (with Foundation Year), BA (Hons) | ● |

I

| | |
|---|---|
| Indie Games Development, BA (Hons) | ● |
| Indie Games Development (with Foundation Year), BA (Hons) | ● |
| Information Technology (IT), BSc (Hons) | ● |
| Information Technology (IT) (with Foundation Year), BSc (Hons) | ● |
| Innovative Home Design and Construction, BSc (Hons) | ● |
| Innovative Home Design and Construction (with Foundation Year), BSc (Hons) | ● |
| Instrumentation and Control Engineering, BEng (Hons) | ● |
| Instrumentation and Control Engineering, HNC | ● |
| Instrumentation and Control Engineering, HND | ● |
| Instrumentation and Control Engineering, MEng (Hons) | ● |
| Instrumentation and Control Engineering by Flexible Open Learning, HNC | ● |
| Instrumentation and Control Engineering by Flexible Open Learning, HND | ● |
| Instrumentation and Control Engineering (with Foundation Year), BEng (Hons) | ● |
| Instrumentation and Control Engineering with Industry, BEng (Hons) | ● |
| Instrumentation and Control Engineering with Industry, MEng (Hons) | ● |
| Instrumentation and Control Engineering with Industry (with Foundation Year), BEng (Hons) | ● |
| Interior Architecture and Design, BA (Hons) | ● |
| Interior Architecture and Design (with Foundation Year), BA (Hons) | ● |
| Interior Design, BA (Hons) | ● |
| Interior Design (with Foundation Year), BA (Hons) | ● |
| International Business, BA (Hons) | ● |
| International Business (with Foundation Year), BA (Hons) | ● |

| | |
|---|---|
| International Business Management (Top-up), BA (Hons) | ● |
| International Business with Human Resource Management (Top-up), BA (Hons) | ● |
| International Business with Marketing (Top-up), BA (Hons) | ● |
| International Tourism Management (Top-up), BA (Hons) | ● |

J

| | |
|--|---|
| Journalism, BA (Hons) | ● |
| Journalism (with Foundation Year), BA (Hons) | ● |

L

| | |
|--|---|
| Laboratory Scientist, Degree Apprenticeship | ● |
| Law, LLB (Hons) | ● |
| Law (with Foundation Year), LLB | ● |
| Law, Criminology and Criminal Justice, LLB (Hons) | ● |
| Law, Criminology and Criminal Justice (with Foundation Year), LLB (Hons) | ● |
| Law with Business Management, LLB (Hons) | ● |
| Law with Business Management (with Foundation Year), LLB (Hons) | ● |
| Law with Policing, LLB (Hons) | ● |
| Law with Policing (with Foundation Year), LLB (Hons) | ● |

M

| | |
|--|---|
| Management Practice, BA (Hons) | ● |
| Manufacturing Engineering, HNC | ● |
| Manufacturing Engineering, HND | ● |
| Manufacturing Engineer, Degree Apprenticeship | ● |
| Marketing, BA (Hons) | ● |
| Mathematics, BSc (Hons) | ● |
| Mathematics (with Foundation Year), BSc (Hons) | ● |
| Mechanical Engineering, BEng (Hons) | ● |
| Mechanical Engineering by Flexible Open Learning, HNC | ● |
| Mechanical Engineering by Flexible Open Learning, HND | ● |
| Mechanical Engineering, HNC | ● |
| Mechanical Engineering, HND | ● |
| Mechanical Engineering, MEng (Hons) | ● |
| Mechanical Engineering (Top-up), BEng Tech (Hons) | ● |
| Mechanical Engineering (with Foundation Year), BEng (Hons) | ● |
| Mechanical Engineering with Industry, BEng (Hons) | ● |
| Mechanical Engineering with Industry, MEng (Hons) | ● |
| Mechanical Engineering with Industry (with Foundation Year), BEng (Hons) | ● |
| Mechatronics, HNC | ● |
| Mechatronics, HND | ● |
| Media and Communications, BA (Hons) | ● |
| Media and Communications (with Foundation Year), BA (Hons) | ● |
| Midwifery, BSc (Hons) | ● |
| Music Technology, BSc (Hons) | ● |
| Music Technology (with Foundation Year), BSc (Hons) | ● |

N

| | |
|---|---|
| Nursing Associate, Higher Apprenticeship | ● |
| Nursing Studies (Adult), BSc (Hons) | ● |
| Nursing Studies (Child), BSc (Hons) | ● |
| Nursing Studies (Learning Disabilities), BSc (Hons) | ● |
| Nursing Studies (Mental Health), BSc (Hons) | ● |

O

| | |
|---|---|
| Occupational Therapy, BSc (Hons) | ● |
| Operating Department Practice Studies, BSc (Hons) | ● |

P

| | |
|---|---|
| Paramedic Practice, BSc (Hons) | ● |
| Performing Arts, FdA | ● |
| Performing Arts (Top-up), BA (Hons) | ● |
| Petroleum and Gas Engineering (Top-up), BEng Tech (Hons) | ● |
| Pharmaceutical Science, BSc (Hons) | ● |
| Pharmaceutical Science (with Foundation Year), BSc (Hons) | ● |
| Physiotherapy, BSc (Hons) | ● |
| Police Studies (Top-up), BSc (Hons) | ● |
| Process Engineering by Flexible Open Learning, HNC | ● |
| Process Engineering by Flexible Open Learning, HND | ● |
| Product Design and Creative Innovation, BA (Hons) | ● |
| Product Design and Creative Innovation (with Foundation Year), BA (Hons) | ● |
| Product Design and Development Engineer, Degree Apprenticeship | ● |
| Professional Policing, BSc (Hons) | ● |
| Project Management, BA(Hons) | ● |
| Project Management (with Foundation Year), BA(Hons) | ● |
| Psychology, BSc (Hons) | ● |
| Psychology (with Foundation Year), BSc (Hons) | ● |
| Psychology and Clinical Skills, BSc (Hons) | ● |
| Psychology and Clinical Skills (with Foundation Year), BSc (Hons) | ● |
| Psychology and Counselling, BSc (Hons) | ● |
| Psychology and Counselling (with Foundation Year), BSc (Hons) | ● |
| Psychology with Criminology, BSc (Hons) | ● |
| Psychology with Criminology (with Foundation Year), BSc (Hons) | ● |
| Psychology with Business, BSc (Hons) | ● |
| Psychology with Business (with Foundation Year), BSc (Hons) | ● |
| Public Relations and Digital Communications, BA (Hons) | ● |
| Public Relations and Digital Communications (with Foundation Year), BA (Hons) | ● |
| Public Services, FdA | ● |

S

| | |
|--|---|
| Social Sciences and Law, International Foundation Year | ● |
| Social Work, BA (Hons) | ● |
| Sociology, BSc (Hons) | ● |
| Sociology (with Foundation Year), BSc (Hons) | ● |
| Sport and Exercise Science, BSc (Hons) | ● |

| | |
|--|---|
| Sport and Exercise Science (with Foundation Year), BSc (Hons) | ● |
| Sport and Exercise Science, MSci (Hons) | ● |
| Sport and Fitness, FdSc | ● |
| Sport Journalism, BA (Hons) | ● |
| Sport Journalism (with Foundation Year), BA (Hons) | ● |
| Sports Coaching and Exercise, FdSc | ● |
| Sports Management and Marketing, BA (Hons) | ● |
| Sports Therapy and Rehabilitation, BSc (Hons) | ● |
| Sports Therapy and Rehabilitation (with Foundation Year), BSc (Hons) | ● |
| Supporting Teaching and Learning, FdA | ● |

T

| | |
|---|---|
| Teaching English to Speakers of Other Languages (TESOL), (Top-up) BA (Hons) | ● |
| Team Entrepreneurship, (BA Hons) | ● |
| Technical Direction for Visual Effects, BSc (Hons) | ● |
| Technical Direction for Visual Effects (with Foundation Year), BSc (Hons) | ● |
| Technical Game Development, BSc (Hons) | ● |
| Therapeutic Counselling (Top-up), BA (Hons) | ● |
| Tourism Management, BA (Hons) | ● |
| Tourism Management (with Foundation Year), BA (Hons) | ● |

V

| | |
|--|---|
| Visual Effects, BA (Hons) | ● |
| Visual Effects (with Foundation Year), BA (Hons) | ● |
| Visual Effects, MComp (Hons) | ● |

W

| | |
|--|---|
| Web Production, BSc (Hons) | ● |
| Web Production (with Foundation Year), BSc (Hons) | ● |
| Working With Children and Young People, FdA | ● |
| Working with Children and Young People (Top-up), BA (Hons) | ● |

Y

| | |
|--|---|
| Young Children and Early Childhood (Top-up), BA (Hons) | ● |
|--|---|

CAMPUS MAP**CAMPUS HEART**

- 1 The Curve
- 2 Library
- 3 Students' Union

Campus Heart is a designated smoke free zone.

BLUE ZONE

- 4 Greig
- 5 Europa
- 6 Victoria
- 7 Mercuria

PURPLE ZONE

- 8 Olympia
- 9 Centuria
- Centuria South

GREEN ZONE

- 10 Business School
- 11 Clarendon
- 12 Waterhouse

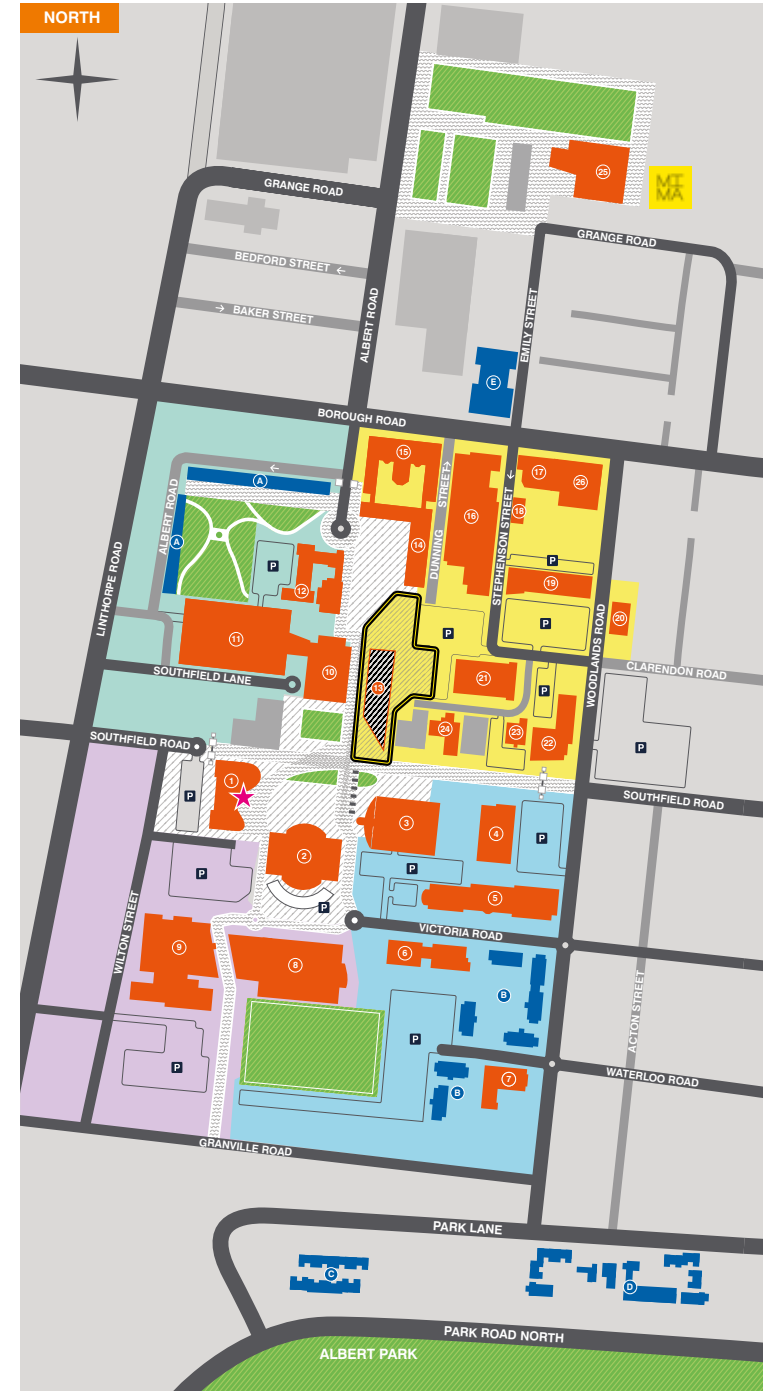
YELLOW ZONE

- 13 Student Life
Estimated completion Autumn 2019
- 14 Middlesbrough Tower
- 15 Constantine
- 16 Stephenson
- 17 Cook
- 18 Foster
- 19 Phoenix
- 20 Education House
- 21 Orion
- 22 Athena
- 23 University House
- 24 Aurora
- 25 MIMA
Middlesbrough Institute of Modern Art

- 26 The Printworks
Corporate and Professional Services

★ Main Entrance

Construction site (no access)

**ACCOMMODATION**

- | | |
|-------------------------|--------------------------|
| A King Edward's Square | D East Parkside Village |
| B Woodlands Halls | E Teesside Central Halls |
| C West Parkside Village | |

Student terms and conditions

All new students will receive a copy of the terms and conditions in their offer letters that sets out what you can expect from the University and what is expected of you as a student. This document will detail and link to other rules and regulations of the University that forms part of your contract with us.

Data Protection Act

All Teesside University records are maintained in compliance with the principles of the General Data Protection Regulation and the Data Protection Act 2018. The University's Student Privacy Notice, which can be found on the University website, explains how your personal data will be processed in the event that you enrol on a course of study with us.

Freedom of Information Act

Teesside University is a public authority under the Freedom of Information Act 2000. Requests for information under this Act, or help in making such a request, should be directed to our Legal and Governance Services or by email to foi@tees.ac.uk.

Contracts (Rights of Third Parties) Act

The University welcomes comments on its courses from students, parents and sponsors. However, the University's contracts with its students do not confer benefits on third parties for the purposes of the Contracts (Rights of Third Parties) Act 1999.

Disclaimer

This prospectus is a general guide to the University, its courses and facilities, and forms no part of any contract between you and the University. It is published for each academic year approximately 18 months in advance and, whilst considerable efforts have been made to ensure that it provides accurate information, you are advised that the development process during the period between publishing the prospectus and completing courses may lead to omissions or inaccuracies in the prospectus. You are therefore advised to check the University's website for up-to-date course information. Due to the time lapse between your application and actual enrolment, there will be rare occasions where the University needs to make changes to your published course either before or after your enrolment which will be in limited circumstances.

These circumstances are fully described in the University's terms and conditions that you receive prior to enrolling at the University but some examples include where there is an insufficient number of students applying to a course or a module or a to make running the course unviable; where key staff have taken extended leave or left the University; following recommendations made by the University's internal academic review processes, including responding to student and professional body feedback; following changes to the funding the University receives; or following other unforeseen changes beyond the University's control.

In the event that we have to make a material change to your course, we will notify you of the change as soon as possible and work with you to understand and manage the effect of this on your position.

All design, photography and production by Student Recruitment and Marketing, Teesside University.

Printed by Linney.

All details correct at the time of going to press (February 2019).

Get the most up-to-date information:

 tees.ac.uk/undergraduate

CURIOSITEES

MIDDLESBROUGH AND THE TEESSIDE REGION'S HIDDEN GEMS



BEAT
Endeavour

**LEISURE
AND
PLEASURE**

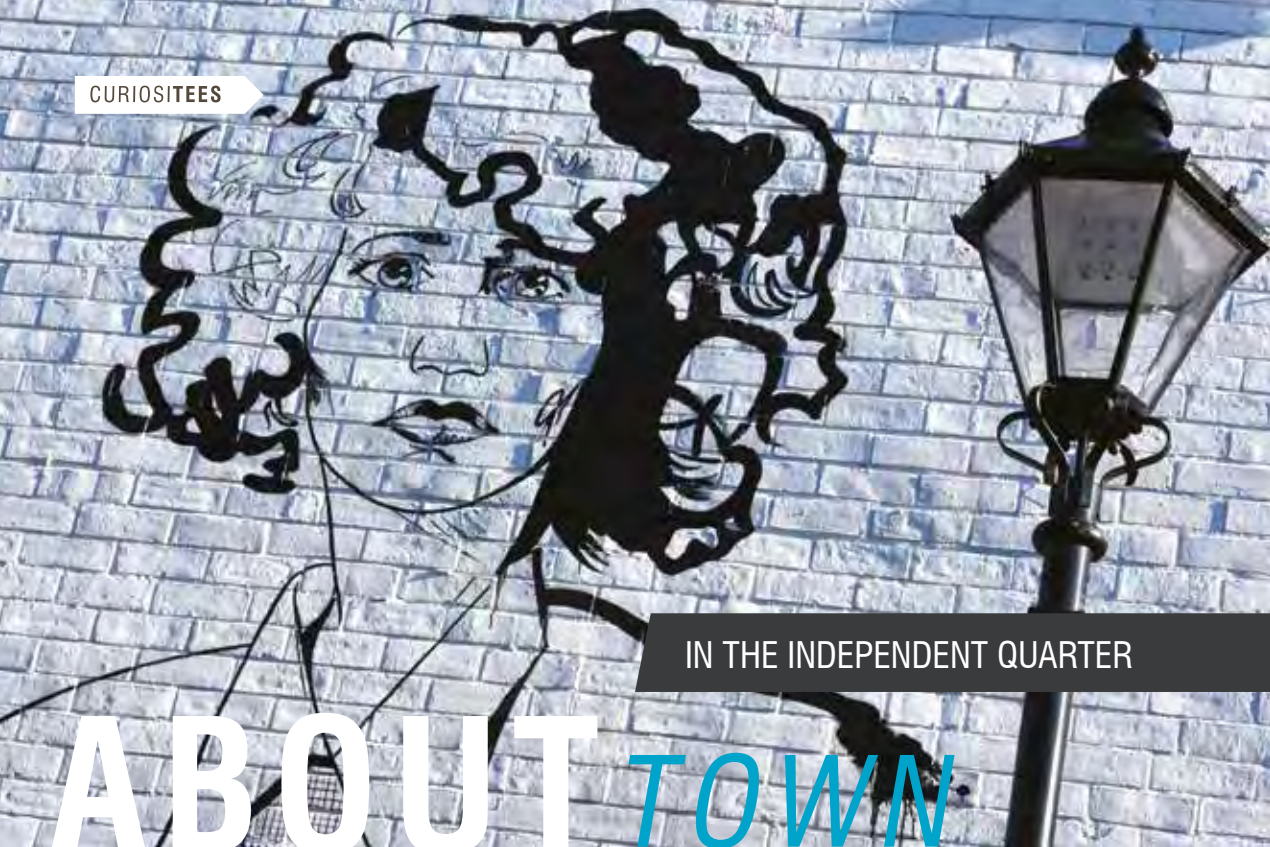
**ABOUT
TOWN**

**CULTURE
TRIP**

**ORANGE
PIP
MARKET**

**TEESSIDE
BUCKET
LIST**

Captain Cook at the Lillian Daph
Store, Saltburn-By-The-Sea



IN THE INDEPENDENT QUARTER

ABOUT TOWN

The bustling heart of Middlesbrough's town centre, Bedford Street and Baker Street present an emerging collection of British independent retailers. Combining eclectic restaurants, stylish salons, trendy boutiques and swanky bars, they're the hottest streets to be seen in.

The Twisted Lip



The Curing House



Saint Boutique

Make sure you visit...

- > Disgraceland
- > Dr Jekyll and Mr Hyde Tattoo Studio
- > Saint Boutique
- > Songbird Bakery
- > The Copper House
- > The Nesting Box
- > The Nuthatch
- > The Slaters Pick



The Slaters Pick

Disgraceland

ORANGE PIP

MARKET

Don't miss Orange Pip on the last Saturday of the month where the traditional marketplace is transformed into a 21st-century carnival of pop-up bars and eateries, live music, arts and performance whilst you shop.



THE CULTURE TRIP

Teesside is not short on culture, catering for art enthusiasts, theatre goers and music festival lovers alike. There's always something happening – whether you're up for busting some moves at a local gig, or a quiet afternoon taking in contemporary art.

Must sees...

Platform A Gallery, Gallery TS1 and Pinapple Black – a mixture of local, international, modern, historic, alternative and useful exhibits – there's something for everyone.

Ku Bar – an established live music venue hosting touring bands and local talent.



Big Mouth Comedy Club – fun-fuelled, belly-laughing nights out, bringing the rising stars from the UK comedy circuit to your doorstep at venues across the region.

Stockton Calling, Twisterella and Stockton International Riverside Festival – music and cultural festivals showcasing some of the best original and emerging music, street theatre, breath-taking circus performances and dynamic dance.

Platform A Gallery



Stockton International Riverside Festival



River Tees Waterports Centre

Make a splash in the river Tees

TEESSIDE BUCKET LIST

Follow our students as they take you to some of their favourite places tees.ac.uk/discover

Gribdale Gate

Get on your bike, or borrow someone else's, and savour our stunning countryside

Centre Square,
Middlesbrough

Swing by the funfair

Whitby

Climb the 199 steps to the abbey at Whitby

Scale to the very top of the Tees Transporter bridge

Taste our famous parmo



Have a henna tattoo at Middlesbrough Mela

Middlesbrough Mela
Middlehaven

Get all arty by visiting Temenos

Dance your socks off at Stockton International Riverside Festival

CURIOSITIES

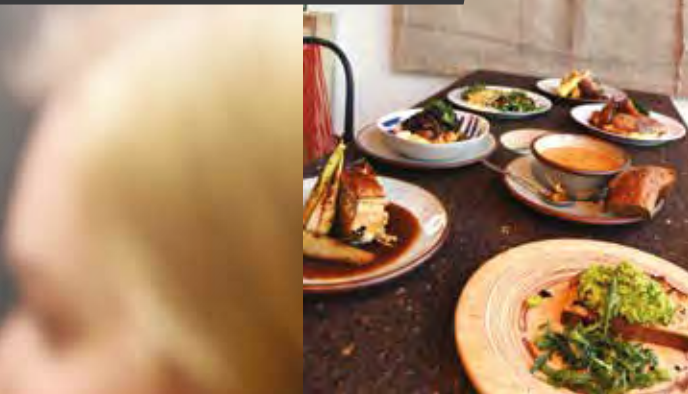
MIMA

YOUR
VERY
OWN

Middlesbrough Institute of Modern Art (MIMA) is part of Teesside University. We view art as a tool for changing the world around us. Drop by to see how the gallery is influencing society, taking a leading role in addressing current issues within politics, economics and culture such as housing, migration, inequality, regeneration and healthcare.

ART GALLERY

The Smeltery – located in MIMA, winner of The Food Awards England North East Restaurant of The Year Award 2018, The Smeltery café is an art project that serves amazing wholesome food.



Independent eateries, artisan bakeries, unique charcuteries, locally sourced produce, homely tearooms, micropubs and cocktail bars – you name it, we've got it. And if that doesn't appeal there are plenty of other options from around the globe, from Mediterranean, Middle Eastern, African and Indian food to traditional English grub.

EAT, DRINK, RELAX



The Nuthatch



Songbird Bakery

Get yourself down to...

Middlesbrough Mela – one of the largest multicultural events in the North East.



The Oven –
'keeping it simple' is their motto.

The Fork in the Road –
a non-profit restaurant
where awesome food
helps change lives.



The Steam Machine Brewing Company –
serving an eclectic selection of beers at Orange Pip Market.



The Tea House



Whether you want a lazy day in the country or by the sea, or you're ready for an adventure, it's all here. Middlesbrough is less than 30 minutes away from some of the most stunning coast and countryside towns and villages.

FROM COAST...

Redcar – its seafront has a vertical pier and was one of the filming locations for *Atonement* and the setting for the BBC's *The Mighty Redcar*.

tees.ac.uk/middlesbrough



South Gare – an area of reclaimed land and breakwater where you can spot rare birds.



Saltburn-by-the-Sea – a Victorian town and top surfing destination.



Whitby – a pretty fishing port and traditional seaside town with awesome fish and chips, arcades and skateboarding.



...TO COUNTRY

Don't forget to bring wellies, hiking boots and flip flops when you're packing for university.



The North York Moors – one of the largest expanses of moorland in the UK along with its spectacular coast, ancient woodland and historic sites. Goathland was home to Hogsmede station in the film *Harry Potter and the Philosopher's Stone* and in TV's *Heartbeat*.

Captain Cook's Monument



Gisborough Priory



Roseberry Topping

Roseberry Topping – enjoy panoramic views of the region from the summit of this local landmark.

CURIOSITIES

Saltburn-By-The-Sea

Football, bowling, pool, white water rafting or rowing. Make your choice and take your chance. Or for a more leisurely pace, wander around our collection of independent and high street shops to grab a bargain or unique item.

LEISURE AND PLEASURE

Dorman Museum – a local and social history museum.

Pineapple Black – a new contemporary art space in Middlesbrough.

Tees Barrage, Stockton – white water rafting, paddle boarding, powerboat trips, bell boating and raft building, plus an air trail, nature reserve and café.

Lane7 – bowling like you've never seen before. Think walnut lanes and retro arcades.

Middlesbrough Football Club's (The Boro) Riverside Stadium

Saint Boutique – brings you bohemian styling for you and your room.

tees.ac.uk/middlesbrough

Get these dates in your diary, quick.

FEBRUARY

Darlington Beer Festival – enjoy independent ales, ciders, perries and music at the Forum.

APRIL

Stockton Calling – a one-day festival featuring some of the best up-and-coming acts from the UK and beyond.

Stockton Duathlon Festival – this run-cycle-run challenge attracts novice and elite athletes.

Whitby Goth Weekend – a weekend celebrating alternative lifestyles linked to Whitby's connections with Bram Stoker's Dracula.

MAY

Tees Regatta – this Stockton festival attracts rowers of all ages and abilities.

JULY

Cleveland Show – an agricultural show held at Middlesbrough's Stewart Park with farm animals, craft and horticulture contests.

Stockton Cycling Festival – a four-day celebration of cycling.



Festival of Thrift

AUGUST

Billingham International Folklore Festival – a must for lovers of traditional dance and song from around the world.

Middlesbrough Mela – the North East's best multicultural celebration in Middlesbrough's Centre Square features international food and live music.

Stockton International Riverside Festival – street theatre, circus, dance, music and pyrotechnics define this four-day arts event along the River Tees.

Whitby Regatta – four days of boat races, entertainment and fireworks, held every year since 1847.

SEPTEMBER

Festival of Thrift – a fun celebration of the art of saving money, sustainable living and upcycling.

Middlesbrough Town Meal – a communal feast celebrating local and sustainable food.

Staithes Festival – more than 100 cottages and public buildings are transformed into pop-up galleries with works by local and visiting artists.

OCTOBER

Discover Middlesbrough Festival – a celebration of the town's heritage with a vintage bus history tour, talks and exhibitions.

Twisterella – a music festival in various venues around Middlesbrough that showcases up-and-coming bands.

NOVEMBER

Bonfire Night – held at Acklam and Middlesbrough rugby clubs, Stockton Riverside, Seaton Carew seafront and Skinninggrove.

Christmas lights and reindeer parade – the fabulous switch-on ceremony in Middlesbrough.

DECEMBER

Stockton Sparkles Festival – a winter festival with music and dancing.



Campus Heart