



UNIVERSITY OF
LIVERPOOL

Your guide to
**Master's
Study**
2019



Contents

About the University of Liverpool	02
Progress to Postgraduate: Get to where you want to be	04
The University of Liverpool in London	06
Online programmes	08
A University of Liverpool degree in China	09
Careers and Employability: Achieve your aspirations	10
Life on campus	14
English language support	14
Learning resources	14
Student Services Centre	15
Open Languages	16
Sport Liverpool	16
Liverpool Guild of Students	16
Accommodation	16
Alumni Community	18
Meet us	19
Life in the city	20
Choosing your programme of study	22
Challenging our world view – Faculty of Humanities and Social Sciences	24
True innovation – Faculty of Science and Engineering	28
Unrivalled expertise – Faculty of Health and Life Sciences	32
Master's programmes 2019	36
Faculty of Humanities and Social Sciences	36
Faculty of Science and Engineering	38
Faculty of Health and Life Sciences	40
Contact us	41

For advancement of learning and ennoblement of life

This has been our mission since the University was founded in 1881 and it remains our mission today; a touchstone for all that we do. It underlines our belief in the transformative power of research and education, not least in the face of an increasingly complex and challenging world. As someone considering deepening your educational experience through postgraduate study, it is clear that you share this belief too and we encourage you to join us on this exciting journey.

About this Guide

This Guide introduces you to the University of Liverpool and gives you an at-a-glance look at what we offer at master's level.

Every effort has been made to ensure that information contained within this Guide is accurate at the time of going to press (July 2018). However, for the very latest developments on all our master's programmes and financial information please visit www.liverpool.ac.uk/study/postgraduate-taught





Original

We are the original redbrick university.



1881

Established in 1881: in this year Queen Victoria reigned over Great Britain and the UK had its first street lit with electric light.



Russell Group

Member of the Russell Group.

About the University of Liverpool



Top 200

Ranked in the top 200 universities worldwide (THE 2017/18, QS 2017/18, ARWU 2017).



TEF Silver

Awarded a silver rating in 2018.



£144 million

in research project funding in 2016/17.



Nobel Laureates

Associated with nine Nobel Laureates.



33,000

students, 8,000 of whom travel from all over the world to study here.



219,000

A global network of 219,000 alumni in 171 countries.



Global links

We have a campus in London, are the largest provider of online degree programmes in Europe and we are the first UK university to establish a joint venture university in China.



20th

in the UK's Research Excellence Framework (REF), with seven subjects in the top 10.



£600 million

invested in our campus.



95%

of the University's UK and EU postgraduates are in employment or further study six months after graduation (DLHE 2016/17).



Top of Russell Group

for graduate employability (DLHE 2016/17).



2,000+

active interdisciplinary research staff across three faculties.

Progress to Postgraduate: Get to where you want to be

At Liverpool you'll gain a postgraduate qualification that is valued worldwide. Our master's programmes can help you to specialise in the subject you're passionate about, move in to a new field, or gain the qualifications and skills needed for your chosen career. But, more importantly, we can help you stand out from the crowd and achieve your ambitions.

Whether you're building on your undergraduate subject or switching discipline, if you're progressing straight from your undergraduate degree or returning to education, we offer a range of study options to suit you.

You can:

- Choose from full and part-time master's programmes, postgraduate diplomas and certificates
- Study at our global campuses in Liverpool, London and Suzhou
- Study wherever you are in the world through our online degrees
- Continue your Professional Development with our CPD opportunities.

Whichever programme or route you choose you will advance your knowledge by accessing world-leading research whilst enhancing your career prospects.

So, why Liverpool?

Worldwide reputation for excellence

The University of Liverpool is one of the UK's leading research institutions with an annual turnover of £523 million, including £95 million for research.

Associated with nine Nobel Laureates and consistently ranked in the top 200 universities worldwide, Liverpool is a member of the prestigious Russell Group of the UK's leading research universities.

At the forefront of innovation and discovery, our academics and researchers are advancing knowledge to improve lives. Our interdisciplinary research, unique model for collaborations and cutting-edge facilities, enable our research community to create global solutions aiming to improve health, create wealth and ensure social justice.

We have globally recognised research strengths in Advanced Materials, Personalised Health, and Infection Diseases, and emerging strengths in Digital, Heritage, Energy, Healthy Living/Ageing, and Genome to Biological Systems.

By joining a research-led university you will benefit from a high-quality education, learning from inspirational figures who will challenge and encourage you throughout your studies.

Research led teaching

Our teaching, like our research, is at the forefront of knowledge and is delivered by leading and internationally renowned academics. As a master's student you will be learning about the latest advances in your subject and will benefit from being part of a department that is contributing to these developments.

We also deliver research focused modules on all of our master's programmes which equip you with the research and development skills needed, not only to successfully complete your dissertation, but to prepare you for your next steps whether that's further research or employment.

Investment in your student experience

The University is committed to continually improving the quality of its student experience and, following significant large scale capital investment, we are transforming our campus to provide you with high quality learning and teaching spaces and research environments.

Your global network

From the moment you join us at Liverpool you will join our global network and benefit from its reach. You will meet and study with students from across the globe and establish life-long networks and friendships that extend beyond your time studying here.

As a connected global university we attract staff and students from over 130 countries worldwide and we also create opportunities for all our staff and students to explore international opportunities around the world too. We achieve this through our global network which includes physical and virtual campuses as well as our research and mobility partnerships.

Creating opportunities and making a difference

As well as creating opportunities for our students, we are committed to making our ground-breaking research and frontier technologies available to our collaborators, for the benefit of the regional and national economies.

We are driving the city's knowledge economy through close collaboration with fellow universities, industry and the NHS, helping the Liverpool City Region to compete in the global business world.

And, we have been instrumental in Liverpool's Knowledge Quarter Development, which aims to bring together key city partners to collaborate and close the economic gap with London.

The Knowledge Quarter Liverpool will:

- Be made up of 450 acres and will include the Materials Innovation Factory, Sensor City and the new Liverpool International College complex
- Support programmes to invest in the 54,000 students across Liverpool
- Deliver £1bn in income and 14,000 jobs to the city region.



The University of Liverpool in London

In 2014 we decided to take the spirit of the city of Liverpool and the University to another great city, London. London is the world's number one student city, home to over 100,000 international students from over 200 different nations.*



We were the first non-London based Russell Group university to open a campus in London; and our centre for excellence, in the heart of the city's financial district, offers innovative, professionally-focused CPD opportunities and master's programmes in the areas of:

- Accounting
- Finance
- Business
- Communication
- Culture
- Design.

Our established professional, cultural, government and academic networks enable us to offer prospective and current students an unrivalled base from which to develop and explore a diverse range of opportunities.

*QS Best Student Cities 2018.



The quality of your postgraduate experience is our key priority – the University of Liverpool in London delivers a premium learning experience.

A carefully developed portfolio of programmes has been designed to produce highly-skilled, commercially aware, workforce-ready graduates; and our existing links with London-based employers, professional institutes and policy makers enable us to offer our students the opportunity to enhance their capability in one of the world's most dynamic and inspiring cities.

All programmes are delivered by University of Liverpool staff, and benefit from the University's research excellence, ensuring students study at the very forefront of knowledge in their discipline.

Master's programmes taught at the London campus are listed on pages 36-40 of this guide.

For more information, visit
www.liverpool.ac.uk/london



The chance to study a master's at the University of Liverpool in London was life changing for me.

Case Study

Maria Ximena Calderon Alvarez, Finance and Investment Management MSc

A big motivation for me to study at the University of Liverpool in London was to continue my personal development at a university with an excellent reputation in a vibrant city that is a hub for global business. I had previously benefited enormously from other experiences overseas such as work experience in the USA – I felt those experiences had taught me self-reliance and gave me independence – this was a chance to continue that personal development process and prepare for my career.

After a campus tour at the University of Liverpool in London, I knew the University would help me achieve my goals; I was really impressed and felt that the staff I had met were going to work very hard to provide my classmates and I with the knowledge, preparation and future opportunities we sought. The University also cared about diversity and inclusion which was appealing to me – my classmates came from a wide range of backgrounds which made for an excellent environment in which to study.

Online programmes

The University is the largest provider of 100% online postgraduate degree courses in Europe with over 8,000 students studying for Liverpool degrees around the world.

We offer 42 fully online postgraduate certificates, master's and doctoral degrees. They are designed for working professionals who want to advance by earning a degree directly from a world class university without having to travel, leave home or interrupt their career.

All programmes – postgraduate awards, certificates, master's and doctorates – are accessible 100% online, allowing you to study from where you are, alongside your job, as you:

- Gain the global knowledge and transferable skills you need to move ahead professionally, wherever you are in the world
- Expand your network as you connect and collaborate with experienced, international professionals.

The University offers online programmes that are relevant for careers in Management (including an online MBA), Computer Science, Health, Psychology, Law, and Education.

We work in partnership with online education experts Laureate Online Education, part of the Laureate International Universities global network of higher education institutions, to deliver our online degrees. Laureate delivers and administers the programmes. All final degrees are awarded directly from the University of Liverpool.

There is no single start date for online programmes. Each programme has regular start dates throughout the year, so you can start your course when it's most convenient for you. Postgraduate certificate programmes can be completed in one year. Students normally complete their master's programme within two to three years.

Our postgraduate awards, certificates and master's programmes are listed on pages 36-40 of this guide.

For more information, visit www.online.liverpool.ac.uk

It's very convenient to be able to go to class anytime, anywhere and get access to the University library 24/7. I absolutely love that flexibility.

Nick Mawani
Master of Public Health (MPH)



A University of Liverpool degree in China

We are also unique in having established a joint Sino-British university, Xi'an Jiaotong-Liverpool University (XJTLU), in partnership with Xi'an Jiaotong University – a top 10 university in China. XJTLU has been a phenomenal success and has grown rapidly since it was established, with more than 10,000 undergraduate and postgraduate students now studying there. You can study a range of market-led taught programmes at the campus.

XJTLU offers a unique international educational experience, and brings together excellent research practice and expertise from both institutions, giving students the skills and knowledge they need to secure careers in a global marketplace.

Postgraduate programmes at XJTLU are all taught in English and lead to a master's degree from the University of Liverpool – so you truly get a Liverpool experience in China. Master's programmes start in September each year, typically taking 18 months to complete and, as with all our campuses, you will be fully supported throughout your time in China through a wide range of professional services that you'd expect from a world-leading university.

XJTLU is based in the world heritage city of Suzhou, which has a population of four million and is located half an hour from Shanghai by bullet train. The campus is located in Suzhou Industrial Park (SIP), one of Asia's most successful business parks – a hub for foreign investors, and home to 3,300 international organisations, including 84 Fortune 500 companies. SIP provides opportunities for extensive research and knowledge exchange initiatives.

For more information about studying for a University of Liverpool in China degree and to see the full list of master's programmes available, visit www.xjtlu.edu.cn/en/find-a-programme



Careers and Employability: Achieve your aspirations

Whatever your motivation for studying at master's level our Careers & Employability Service is here to support you in achieving your aspirations.

We're proud of our long standing relationship with the University of Liverpool

Case Study

Gael Decoudu, Head of Data Science and Digital Analytics, ShopDirect

Our relationship seems to grow bigger and stronger every year. Having a world-class Russell Group university on our doorstep, especially one that puts emphasis on employability, is really important to us. There's a focus on applying academic theory to real life scenarios at the University, which means the students we speak to are able to start thinking and innovating commercially.

We've hired some excellent students, from undergraduates to PhDs from STEM subjects, to bolster our customer intelligence teams. We're also welcoming interns and MSc students for their final projects, developing research partnerships with the faculty on applied research topics and providing scholarships to PhD students. Conducting guest lectures has also allowed us to develop a two-way partnership.

In 2017, 78% of *postgraduates* were found to be in *higher skilled* jobs compared to 66% of *graduates**

Department for Education: Graduate Labour Market Statistics 2017

On average, *postgraduates* earn £6,000 more per year than *graduates**

Department for Education: Graduate Labour Market Statistics 2017

We offer high-quality employability support during and after your time studying with us, blending advice, guidance and training and building on the existing expertise we have developed as one of the UK's leading careers services.

Through a range of career management inputs, personal and professional development and access to industry experts and speakers, our aim is to match your needs and ambitions as they develop.

As well as face-to-face guidance and on-site sessions we also offer online support, webinars and guidance. All our activities are supported by a state-of-the-art interactive website, CareerHub.

We can help you with:

- Career planning
- Understanding the job market
- Making effective applications through CVs, letters and application forms
- Preparing for and attending job interviews
- Performing effectively at Assessment Centres
- Strengthening your networking skills, including digital networking
- Industry networking opportunities.

*Percentages based on all working age graduates and postgraduates.

You will also benefit from our close links with industry. All our career and employability development activities are designed with considerable input from employers, and we hold key networking events throughout the year.

In recent years we have won several prestigious national awards including the AGCAS International Award for demonstrating an outstanding commitment and contribution to working with students, relevant employers and promoting internationalisation. For more information, visit www.liverpool.ac.uk/careers





Case Study

I decided to undertake a master's course for personal interest, but also to help with my career. I completed my undergraduate degree six years ago so it has been quite refreshing and enjoyable for me to return to a learning environment and to be able to develop a deeper understanding of new and stimulating concepts.

The combination of modules on my course fitted very well with the topic areas I wanted to pursue. The course is also accredited by the Institute of Environmental Management and Assessment (IEMA) and through completion of the required modules, I have been able to automatically upgrade my existing membership with IEMA. This was a particularly attractive feature for me as I currently work as an Environmental Consultant while studying part-time.

Juggling part-time study with a career comes with its own challenges and I have been very fortunate to have all the support from my tutors and the Careers & Employability Service who are just on the doorstep within the campus. They are incredibly knowledgeable and go the extra mile to provide help and guidance when needed. They definitely push you to realise your potential.

My advice to anyone considering postgraduate study would be to come prepared to put in the hours and to work hard! It will be challenging at times, however the knowledge, skills and postgraduate qualification you will gain at the end of it will be worth it.

Mwale Mutale, Environmental Assessment and Management MSc (Part-time) graduate

Mwale is now a Senior Consultant at WSP, one of the world's leading engineering professional services consulting firms.



Case Study

Postgraduate study has allowed me to focus my career prospects whilst expanding my knowledge and lab-based skills. The master's has provided opportunities that would not have been available to me otherwise, which I value greatly. Postgraduate study was an investment into my own future that paid off with the help of the University of Liverpool.

The company I now work for, 3D Life Prints, offered my cohort the opportunity for an industrial placement whilst at the University of Liverpool. I was fortunate enough to be taken on permanently upon the completion of my master's. For me, I feel that studying Biomedical Engineering at the University of Liverpool was a direct link to industry and allowed me step into the profession I aspired to be in.

Postgraduate study broadens horizons whilst giving you a deeper understanding in your field of interest. Also, studying an accredited course, such as Biomedical Engineering MSc (Eng), places you in a very strong professional standing upon completion.

In summary, postgraduate study is a fulfilling and valuable experience for pursuing a career in both academia and industry – but be prepared to work for it!

Nick Turner, Biomedical Engineering MSc graduate

Nick is now a Lead Biomedical Engineer at 3D Life Prints where he undertook an industrial placement as part of his MSc.

Life on *campus*

Our master's students are valued members of our student community who are supported through our professional services teams and encouraged to become active members of the Liverpool Guild of Students.



English language support

The English Language Centre (ELC) is the University's specialist English language facility for international students.

If you need to improve your English before you start your master's programme we offer specially designed Pre-sessional courses ranging from short intensive courses to all year round study. We also provide a free comprehensive programme of In-sessional English support to run alongside your master's programme. These programmes can be discipline specific, focusing on relevant language used in particular subject areas, or general academic English suitable for all international students.

ELC is also a registered IELTS testing centre running over 20 tests a year and provides IELTS training year round. For more information, visit www.liverpool.ac.uk/english-language-centre

Learning resources

We have impressive on campus learning resources available to all our postgraduate students from our designated postgraduate study space, impressive libraries and high-tech computer services.

- 24 hour term-time opening
- Over 2 million books and 680,000 electronic books
- 65,000 electronic journals
- Special collections including the largest Science Fiction collection in Europe and rare books and manuscripts
- 2,400 PCs across campus
- Laptop loan service
- High speed Wi-Fi
- Access to our services online wherever you are
- 24 hour service desk
- Free email, file space and software
- Access course materials, submit assessments, contribute to discussions and group assignments through our virtual learning environment 'VITAL'.

For more information on our library services, visit www.liverpool.ac.uk/library. For more information on our computing services, visit www.liverpool.ac.uk/csd



Student Services Centre

We offer comprehensive support and welfare services to students through two teams: Student Welfare Advice and Guidance, and the Counselling and Mental Health Services.

Student Welfare Advice and Guidance

The team can offer you advice, support and information on a wide range of non-academic issues including finance, disability, issues relating to your general welfare and support for international students.

Counselling and Mental Health Services

The Counselling Service is here to help you address personal or emotional problems that get in the way of realising your full academic and personal potential. The service offers free and confidential advice to all students.

For more information on all of the advice and guidance available to you as a master's student, visit www.liverpool.ac.uk/studentsupport/

The facilities at Liverpool are second to none. I have always found everything I need, whether that be workspace, study materials or advice.

Marianne Scott
Mathematical Sciences MSc





Open Languages

As a master's student you have the opportunity to learn a new language and open up your world even further through our Open Languages modules. Graduates who speak another language are in high demand in roles that extend well beyond interpretation and translation to encompass all elements of business transaction, international cooperation and politics. As a postgraduate student you can study language modules in French, German, Chinese (Mandarin), Italian, Spanish, Portuguese, Basque or Catalan as an extra-curricular option. For more information, visit www.liverpool.ac.uk/languages

Sport Liverpool

Whether you take part in organised activities or independent exercise, our sports services provide a great way to meet people, get connected and achieve a level of fitness and general well-being that can help you with the other, more demanding aspects of University life. For more information, visit www.liverpool.ac.uk/sports

Liverpool Guild of Students

As soon as you join the University of Liverpool, you automatically become a member of the Liverpool Guild of Students and from your first day as a student and throughout your university years, the Guild will make sure you enjoy your time at Liverpool. The Guild is led by students, and makes sure you're at the heart of everything they do. For more information, visit www.liverpoolguild.org

**Liverpool
Guild of
Students**



Accommodation

We are fortunate in Liverpool to have a wide variety of accommodation for our postgraduate students, with good facilities and at reasonable prices.

University accommodation

The University's postgraduate accommodation is located at Vine Court, Philharmonic Court and Dover Court, all of which are located on, or very close to, the University campus and just a short walk from the city centre.

Located on the city campus, **Vine Court** offers a mix of both catered and self-catering accommodation. Study bedrooms are all en-suite with a high speed broadband connection with shared social kitchen/diners and lounge areas. Vine Court has an excellent restaurant, laundrette and large student chill-out mezzanine and outdoor spaces for socialising. For around an extra £40 each week, the catered option provides a freshly cooked breakfast and 3-course dinner, fresh fruit and soft drinks from a large daily menu at our Liv 2 Eat restaurant.



Philharmonic Court offers self-catered en-suite rooms all with double beds arranged around a central courtyard. It has its own social space, on site laundry and study rooms. Rooms are all fully furnished, broadband-connected and finished to a high standard. The residence itself is gated with a private central courtyard, 24hr reception and on-site residential adviser team.

Dover Court is located to the North of our city campus and offers self-catered en-suite accommodation. The private single study bedrooms are all fully furnished, broadband-connected and en-suite, with five to six student rooms clustered around shared social kitchens and living rooms. There is also a large quiet study space just off the main reception.

For more information, visit www.liverpool.ac.uk/accommodation/about-us/postgraduate

Privately rented accommodation

Liverpool is a large city with a wide variety of rented accommodation available. Type and standard of accommodation in Liverpool varies considerably – and so does the cost. If possible, you should come to Liverpool a few weeks before your programme starts to look for a suitable place.

For information regarding private housing in Liverpool visit Liverpool Student Homes at www.liverpoolstudenthomes.org/

Residential adviser opportunities

You can live at the heart of both our award winning campus and amazing city by becoming one of our Residential Advisers and save a minimum of £4,000 per year on accommodation! You'll provide support and guidance to our undergraduate students, from dealing with anything from lost keys or illness to well-being concerns or news of a family bereavement. We will provide you with the necessary training and you will have 24/7 back-up from our professional student support teams. In return we can offer you accommodation at a reduced rate as well as the opportunity to gain some valuable experience to benefit your future career. For more information, visit www.liverpool.ac.uk/accommodation/support/residential-adviser-team/



Alumni Community

Globally connected for life

Your journey and relationship with the University doesn't end once you graduate; quite the opposite! As a University of Liverpool graduate you will have access to a wide range of benefits and services including event invitations and our professional interest networks which offer professional development support. With more than 219,000 graduates located all over the world, the University of Liverpool boasts a thriving alumni community which will be invaluable throughout your university journey and beyond.

As a graduate you can:

CONNECT with alumni around the world by joining one of our professional, academic, and social networks or by attending one of our many events.

LEARN new skills through discounted CPD study, free online journal access, and webinars.

DEVELOP your career by joining our new global e-networking platform, Liverpool Connect, created exclusively for University of Liverpool alumni.

Liverpool Connect

Through Liverpool Connect you can benefit from the insight of our alumni community by networking and sharing professional experience. This online space allows you to network with other current students and graduates and share 'insider' information on job roles and career areas. If you're looking for a contact in a particular industry or sector, or thinking of changing careers, our online eNetworking platform lists the details of many University of Liverpool alumni, locally, nationally and internationally, so that you can find the contact you need to advance your career or develop your business.

We are enormously proud of our global alumni family and are confident that your University of Liverpool degree will be of great benefit throughout your career.

To find out more, visit www.liverpool.ac.uk/alumni

Meet us

There are many ways to meet us to discuss the postgraduate opportunities we have on offer at the University of Liverpool.

Postgraduate Open Evenings

Join us at one of our Open Evenings to discover the exciting range of professional, creative and industry focused programmes that you could be studying in September 2019.

This year's events are taking place on:

- Wednesday 28 November 2018
- Wednesday 20 March 2019

For more information and to register, visit www.liverpool.ac.uk/pg/open-day

- Attend free talks about everything to do with master's and PhD study
- Pick up an exclusive and comprehensive guide to UK postgraduate funding and speak to funding experts
- Register and attend for your chance to win a £1,000 study bursary!

For more information and to register, visit www.findamasters.com/LIVE

Virtual Open Day

If you are unable to visit the campus, our Virtual Open Day is an ideal way for you to explore the facilities we offer at our Liverpool and London campuses from wherever you are in the world.

To take a look, visit www.liverpool.ac.uk/virtual-open-day

Meet us where you are

We attend a number of postgraduate fairs and events both in the UK and across the globe throughout the year where you can speak to a University of Liverpool representative about our programmes and opportunities.

For details, visit www.liverpool.ac.uk/study/postgraduate-taught/meet-us



Liverpool graduates have become pioneers in every field and we are associated with nine Nobel Prize winners.

Other notable graduates include...



...the first female Director-General of MI5



...the first female judge to sit at the Old Bailey



...the first Chief executive of Hong Kong



...the founder of the Stirling prize for Architecture

However, we're proud of every member of our alumni community and welcome you to join us.



Postgrad LIVE! 2019

We're also delighted to be hosting Postgrad LIVE! at our Liverpool campus on Wednesday 13 February 2019.

Postgrad LIVE! is your chance to:

- Meet representatives from top universities both in the UK and abroad – all in one place!
- Get master's and PhD application advice



Life in *the city*

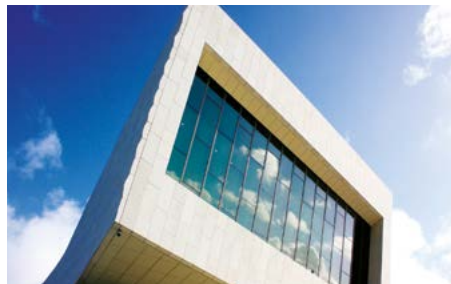
There's nowhere quite like Liverpool!

Our impressive waterfront is a UNESCO World Heritage Site, we are home to The Beatles, the Grand National and Liverpool and Everton football clubs. We also have more museums, theatres, galleries and listed buildings than any other city in the UK outside of London.

It's a city which is home to 50,000 students with a vibrant cultural and social scene – from music, art, and theatre to sport, shopping, and nightlife.

Art and museums

Liverpool is an 'art-lovers' paradise; from old masters to modern masterpieces and cutting-edge film, photography and visual arts. Many of the city's museums celebrate Liverpool's rich and varied history.



Theatre and performance

Turn a corner in Liverpool and you will stumble across a theatre venue; the most renowned of which stage premieres by both local and international writers and host popular touring West End productions.

Music

Whether you prefer to see big names in stadium size venues or the newest unknown talent in underground clubs, Liverpool is the place to be. Classical music fans should not miss the world renowned Royal Liverpool Philharmonic Orchestra, led by the Chief Conductor and honorary Professor of the University of Liverpool, Vasily Petrenko.



Shopping

Liverpool is a shopping destination to rival any city. Liverpool One houses 160 shops that are open late into the evening, along with restaurants and a multiplex cinema. Nearby, there is high-end and designer fashion at the Met Quarter and Cavern Walks and just a short walk from there you can find small, eclectic boutiques and quirky shops, offering a range of styles from urban streetwear to vintage.

Eating out

Aside from the many eateries dotted around campus, there is an incredible range of cafés, bistros and restaurants in Liverpool appealing to all tastes and budgets.

Nightlife

With over 250 city centre pubs and clubs, it is no surprise that the users of Trip Advisor voted Liverpool as Britain's Best Nightlife Destination – everything is within walking distance in the city centre too!

Relaxing

In the south of the city you will find Calderstones and Sefton Parks and Lark Lane, home to chilled-out bars, restaurants and an eclectic mix of independent shops. Or head to the north of the city to find Formby which offers an unspoilt stretch of National Trust coastline, or to Crosby Beach to see Antony Gormley's 'Another Place' installation of 100 life-size statues.

There really is something for everyone in Liverpool. To find out more [download the free 'it's liverpool' app from the iOS App Store and Google Play itsliverpool.com/app](#)

Festivals

Year-round Liverpool draws crowds to its internationally acclaimed music and cultural festivals. Whether it's to see live music at **Liverpool Sound City**, the **Liverpool International Music Festival**, **Africa Oyé** and **Creamfields**; embrace the energy and passion at **Brouhaha**, **Homotopia**, **Brazilica** and **Liverpool Pride**; or experience our heritage and culture at the **Mersey River Festival** and **Liverpool Light Night**, you can be sure Liverpool is always celebrating something!



Sport

Liverpool is synonymous with sport. Home to two of the Premiership's biggest football teams, Liverpool and Everton, both home grounds are a mile or so from the city centre. Aintree Racecourse is home to the one of the highlights of the annual horse racing calendar, the Grand National. Locally there is County Cricket, golf on England's 'Golf Coast', Rugby League at St Helens and Widnes, and ample opportunities for water sports on the coastal outskirts of the city.



Choosing your programme of study

The University is comprised of three faculties; the Faculty of Humanities and Social Sciences, the Faculty of Science and Engineering and the Faculty of Health and Life Sciences, and our strength lies in bringing together academics from across all our Faculties to produce interdisciplinary research that is globally relevant. We offer a diverse range of master's programmes across all three Faculties that are powered by this cutting-edge research.

Designed for you

We know that our master's students have different motivations for studying at this advanced level and we cater for all of their needs.

Most of the master's programmes at our Liverpool and London campuses can be studied full-time over 12 months or part-time over two years, which is ideal if you're an undergraduate progressing straight on to a master's programme or an international student coming to the UK to study.

Typically, programmes start in September with taught modules taking place over two semesters, through to June the following year. Dissertations are completed over the summer and you graduate the following December.

For people who are in employment and trying to fit master's study into their busy lifestyles, a number of our master's programmes can be studied on a flexible basis as CPD modules, as a PG Certificate or a PG Diploma;

allowing you to progress to the full master's programme at your own pace. Alternatively, you can join the 8,000 students who are studying one of our postgraduate qualifications online.

Many of our programmes now include internships, are professionally accredited, and benefit from guest speakers from industry – all of which enhance your experience and prospects.

Look out for the following symbols when you're browsing our master's programmes online.



Professionally accredited



Internships available



Modules available as CPD

Entry requirements

For entry on to our master's programmes, you will normally need a first class or 2:1 honour's degree in a relevant subject or the international equivalent (as recognised by the National Recognition Information Centre (NARIC) or the University's international recruitment office).

All applicants must have reached a minimum required standard of English language and are required to provide evidence of this.

Qualifications accepted by the University can be found on our International webpages. Please see www.liverpool.ac.uk/international for English Language requirements specific to your country.

Some programmes may have additional or specific entry requirements, so please check the master's programme you are interested in before submitting your application.

How to apply

Once you have chosen your master's programme(s), the easiest way to apply is online. Go to www.liverpool.ac.uk/study/postgraduate-taught/applying

You'll be required to submit your:

- University/degree transcripts and certificates
- Evidence of English language ability (International/EU applicants only; visit our website for details)
- A personal statement explaining why you want to undertake the programme and why you feel you are a suitable candidate
- Two references.

We encourage all students to apply for their chosen programme as soon as possible. International students who require a visa to study in the UK should apply no later than 31st July of the year they wish to commence their studies. UK and EU students should apply no later than 31st August.

Fees and Scholarships

Tuition fees

The University's tuition fees represent excellent value for money for a Russell Group university.

Fees cover the cost of your tuition, registration, examinations (but not resits) and graduation. The level of fees you pay depends upon whether you are classified as a UK, EU or international student.

The fees for each of our master's programmes are listed on pages 36 to 40.

Scholarships and awards

We also offer a range of generous scholarships and awards for UK, EU and international students; general awards, awards for students from particular regions and countries, and awards linked to the subject you want to study. Scholarships and awards typically offer support towards tuition fees; including some full tuition fee waivers, but some offer support towards living costs too.

Whilst some scholarships and awards are automatically awarded to eligible students, others require you to apply and have an application deadline. So, if you do require financial support, we suggest that you start to research how you're going to fund your master's programme at least 12 months in advance of your start date.

Look out for the  symbol for details of scholarships on our course webpages.

Postgraduate Progression Award

If you're a current University of Liverpool undergraduate or alumni, including Study Abroad and Exchange students, progressing to either full or part-time postgraduate taught study you're eligible to receive our Postgraduate Progression Award, a reduction in tuition fees. For more information, visit www.liverpool.ac.uk/progress

Master's Loans

If you plan to take a taught, research or professional master's course in 2019, you may be able to get a Government Loan to help with course fees and living costs. In 2018 you could borrow up to £10,609, but this figure and the eligibility criteria may change for 2019.

For the very latest information on fees, including payment of fees and transferring funds from abroad, and loans and scholarships, visit www.liverpool.ac.uk/study/postgraduate-taught/finance

Challenging our world view

The Faculty of Humanities and Social Sciences is an important influencer in the social, political and cultural life of the city region and the UK, and makes a significant contribution to enhancing the University's research profile.

The Faculty of Humanities and Social Sciences is made up of:

University of Liverpool Management School

School of the Arts

- Architecture
- Communication and Media
- English
- Music
- Philosophy.

School of Histories, Languages and Cultures

- Archaeology, Classics and Egyptology
- History
- Irish Studies
- Modern Languages and Cultures
- Politics.

School of Law and Social Justice

- Law
- Sociology, Social Policy and Criminology.

You can study both Master of Arts (MA) and Master of Science (MSc) programmes within the Faculty, as well as Master of Research (MRes) programmes, which involve more independent study than the MAs and MScs, and are often a route to PhD study.

Architecture, Communication and Media, and the University of Liverpool Management School offer programmes at both our Liverpool and London campuses and you can study some Law and Management programmes online.

Many of our master's programmes are professionally accredited and we also offer a number of specialised and professional master's degrees.

For details of all our master's programmes, visit www.liverpool.ac.uk/study/postgraduate-taught



Spotlight on research The battle against modern slavery

The transatlantic slave trade was the greatest forced migration in history with a lasting impact on Africa, South America, the US, Caribbean and Western Europe. There is now a pressing need to tell the stories related to this trade and to highlight their legacies and relevance to contemporary issues that affect us all. Sadly, slavery is not just confined to history – one measure estimated that in 2016 over 40 million people around the world were victims of modern forms of enslavement, including human trafficking, forced labour and forced marriage.*

Liverpool was a major slaving port in the past, but has long since been a centre of research on slavery through the Centre for the Study of International Slavery (CSIS), a partnership between the University of Liverpool and National Museums Liverpool. Through this facility, Liverpool's 'dark heritage' is today facilitating world-leading research into the abolition of modern slavery.

The University recently secured £2 million of funding for a four-year project to help combat slavery in Sub-Saharan Africa. The CSIS joins three of the main UK centres on research into slavery with leading anti-slavery Non Governmental Organisations (NGOs) and a range of partners across West and Central Africa in Ghana, Sierra Leone and the Democratic Republic of Congo.

Find out more about research at Liverpool at www.liverpool.ac.uk/research/research-at-liverpool/ and our work on modern slavery at www.liverpool.ac.uk/csis

This new interdisciplinary network tackles one of the most significant global challenges facing humanity today and will explore how approaches from the arts and humanities can shift anti-slavery efforts towards a more community – engaged, human rights focus that delivers real development impacts.

Professor Alex Balch
Co-Director of the Centre for the Study of International Slavery (CSIS)

*www.un.org/apps/news/story.asp?NewsID=57550#.WjLAoN9I_IV



Spotlight on University of Liverpool Management School

The University of Liverpool Management School; making a difference from a vibrant and enterprising world city of culture.

AACSB-Accredited, the University of Liverpool Management School is in the top 5% of business schools worldwide. Regarded as one of the most rigorous assessments, many top global recruiters will only consider candidates from AACSB-Accredited schools – a clear signal that our programmes respond to the needs of business and meet specific standards of excellence.

The School offers a full range of postgraduate management education, encompassing master's and MBA programmes, as well as PhD opportunities.

Our MSc programmes are designed for people who wish to begin their career in management, switch their career, or deepen their experience in a particular management area. The Management School is highly regarded in many world rankings and the majority of our master's programmes are professionally accredited.

From the moment you start your postgraduate programme you will have access to a specialist careers team which includes professionally qualified MSc Careers Advisers and a dedicated International Employer Engagement Officer.

We appreciate that as a postgraduate student your time will be precious, so careers support is designed to be convenient and responsive to your needs. Support is available through one-to-one appointments, online and on-campus workshops and seminars, careers fairs, and our Leaders of Tomorrow programme which helps our best and brightest MSc students take their first steps towards a rewarding, professional career.

See pages 36 to 40 for a full list of the master's programmes we offer.



Case Study

Before I decided to study my MSc at the University of Liverpool, I was a Marketing Manager in a Real Estate Company. After three and a half years, I wanted a change and decided to do a master's degree in Entrepreneurship. The Management School's Entrepreneurship MSc admits students from a range of disciplines and I found that this created diversity amongst the students.

Whilst at the Management School, two modules which have proven valuable for my career have been 'Entrepreneurial Marketing' and 'Entrepreneurial Decision Making'. These modules helped me to transform academic knowledge into practical solutions which has been hugely beneficial. I have also developed my critical thinking skills. Now I cannot help but question, evaluate and try to find a different perspective on everything that I read.

During my studies, I often used the MSc Careers Adviser and she was extremely helpful and kind to me. She helped me to update my CV according to the UK requirements, write an appropriate covering letter as well as prepare professional and high quality application forms. I also worked as an International Student Ambassador during my studies. Working for the University on open days was a great experience and I really enjoyed being able to represent the University as an ambassador.

I currently head Startup Mexico in Merida which is Mexico's first entrepreneurial super hub that has been designed to foster collaboration and innovation. It also hosts aspiring entrepreneurs, start-ups, seed funds, corporations and a variety of services aimed at newly created companies. As well as this, I teach Marketing and Entrepreneurship at Universidad Autónoma de Yucatán (UADY) which is a top graduate university in the south of Mexico. I really love mentoring and coaching up-and-coming entrepreneurs.

Lízbeth Mariánn Zumárraga Avila, MSc Entrepreneurship graduate

Lízbeth now heads up Startup Mexico and is a lecturer at Universidad Autónoma de Yucatán.

True innovation

The Faculty of Science and Engineering connects research strengths, technologies and experts from a unique, broad mix of disciplines. This allows us to develop innovative solutions and approaches to tackle many of today's complex social, economic and environmental challenges.

The Faculty of Science and Engineering is made up of:

School of Electrical Engineering, Electronics and Computer Science

- Electrical Engineering and Electronics
- Computer Science.

School of Engineering

School of Environmental Sciences

- Earth, Ocean and Ecological Sciences
- Geography and Planning.

School of Physical Sciences

- Chemistry
- Mathematical Sciences
- Physics.

You can study Master of Science (MSc) programmes within the Faculty, as well as Master of Research (MRes) programmes, which involve more independent study than an MSc, and are often a route to PhD study.

We also offer master's programmes with a Year in Industry within the School of Electrical Engineering, Electronics and Computer Science.

Engineering, Geography and Planning, and Mathematical Sciences offer programmes at both our Liverpool and London campuses and you can study some Computer Science programmes online.

Many of our master's programmes are professionally accredited and we also offer a number of specialised and professional master's degrees.

For details of all our master's programmes, visit www.liverpool.ac.uk/study/postgraduate-taught



Spotlight on research Pioneering the discovery of advanced materials

With our expertise in materials chemistry and computer-aided materials design we are pioneering the discovery of advanced materials. Using techniques underpinned by computer simulations and robotics, our work has applications in clean energy, sustainable living, manufacturing, healthcare, and consumer products. Our world-leading expertise, unique facilities and innovative attitude to interdisciplinary research will allow future research leaders to nurture their talent in this field.

Two key academic research groups, led by Professors Andy Cooper FRS and Matt Rosseinsky FRS, are creating innovative new materials with a range of uses; from porous molecular organic solids and liquids which can capture harmful pollutants to new materials for the harvesting, storage and conversion of low-carbon energy.

Our award-winning research expertise is backed by award-winning facilities. The Materials Innovation Factory (MIF) recently won Development of the Year at the NW Business Inside Liverpool City Region Property Awards, where the judges also noted the role the MIF will have in supporting the Liverpool economy.

Find out more about research at Liverpool at www.liverpool.ac.uk/research/research-at-liverpool/ and our interdisciplinary research on Advanced Materials at www.liverpool.ac.uk/research/research-at-liverpool/research-themes/advanced-materials/



Spotlight on MSc Programmes with a Year in Industry

To meet the increasing demand for MSc students to have industry experience, the School of Electrical Engineering, Electronics and Computer Science has introduced six new MSc programmes with a year in industry.

Designed for graduates of the highest calibre, these MScs provide you with advanced knowledge and skills and give you the opportunity to put that knowledge into practice through valuable work experience during a one year industrial placement.

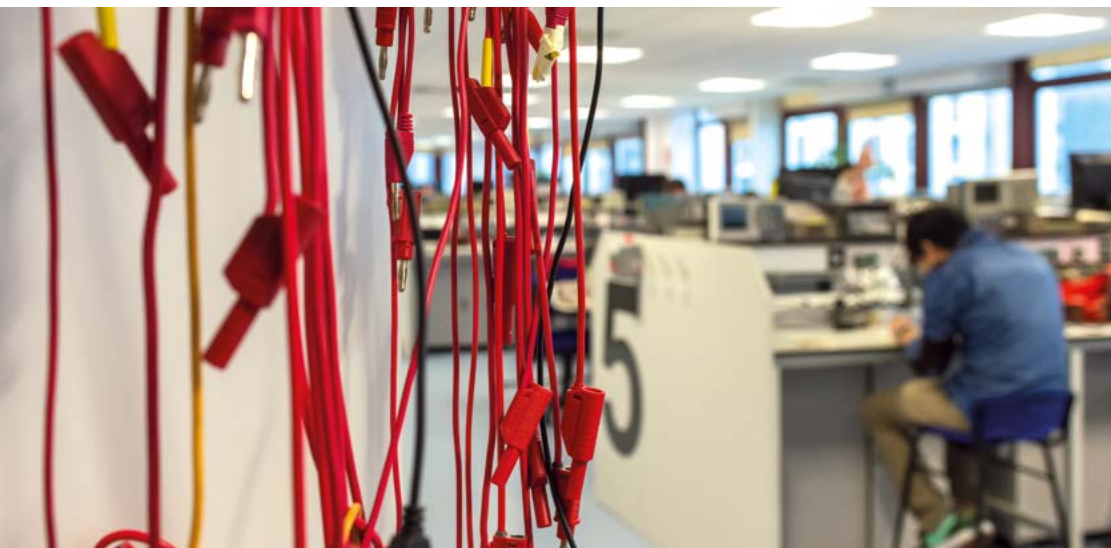
The two-year MSc programmes all share the same taught modules with their equivalent one-year programme. However, unlike the one-year MSc, which includes an MSc project over the summer, the two-year programme includes an industrial project and placement in year two (either in the UK or overseas).

This opportunity to work in industry helps students to strengthen their career options by:

- Undertaking the project work in an industrial setting
- Applying theory learnt in the classroom to real-world practice
- Developing communication and interpersonal skills
- Building networks and knowledge which will be invaluable throughout your career.

The School of Electrical Engineering, Electronics and Computer Science is at the forefront of world-leading and internationally acclaimed research in this fast moving discipline. Our postgraduate master's and research programmes offer high quality specialised training for graduates with Computer Science, Electrical Engineering or related science degrees.

See pages 36 to 40 for a full list of the master's programmes we offer.



Case Study

Studying at master's level has enabled me to become more specialised in a particular area, building on the knowledge that I gained from my undergraduate degree. Having the chance to choose a year-long project in the area that I'm interested in with an expert in the field as a supervisor has been invaluable. It's boosted my understanding and experiences in Telecommunications and Wireless Systems Engineering which will aid me in my future career prospects.

As an international student, I found there was a big difference between the culture and study pattern here than in my home country. However, the University of Liverpool provided warmth and support to help me to adapt and make adjustments to being a student in the UK. For example, all students are assigned an Academic Adviser and a senior student as a mentor, which is helpful for both academic and personal guidance, and the free English language support was fantastic.

Career wise, I accessed the huge amount of resources in the Careers & Employability Service and my tutor also gave me personalised career advice and tailored my CV for me.

Xingyu Yang, Telecommunications and Wireless Systems MSc
with a Year in Industry graduate

Xingyu is currently undertaking his placement year as a junior web developer at The Hood Ltd.

Unrivalled expertise

The Faculty of Health and Life Sciences ranks among the top 100 universities in the world for clinical, pre-clinical and health subjects.

The Faculty is structured to bring together areas including Biological Sciences, Medicine, Psychology and Veterinary Science and to further promote the interdisciplinary and multidisciplinary approaches which are required for research excellence in the 21st century.

The Faculty is made up of eight institutes, five of which house research activities:

Institute of Ageing and Chronic Disease

Institute of Infection and Global Health

Institute of Integrative Biology

Institute of Psychology, Health and Society

Institute of Translational Medicine

And, three of which lead on teaching and learning, as follows:

Institute of Veterinary Sciences

Institute of Clinical Sciences

- School of Medicine
- School of Dentistry
- School of Health Sciences.

Institute of Life and Human Sciences

- School of Life Sciences
- School of Psychology.

You can study Master of Science (MSc) programmes within the Faculty, as well as MRes programmes, which involve more independent study than an MSc, and are often a route to PhD study.

You can study some programmes in Medicine and Psychology both on campus in Liverpool and online. Veterinary Sciences also offer programmes online.

Many of our master's programmes are professionally accredited and we also offer a number of specialised and professional master's degrees.

All Schools within the Faculty offer a diverse and comprehensive range of CPD modules and options.

For details of all our master's programmes, visit www.liverpool.ac.uk/study/postgraduate-taught



Spotlight on research A global impact in infectious diseases

With over a century of established research in infectious diseases, the University of Liverpool is a recognised leader in the field of global health. The depth and breadth of our clinical expertise, together with our capabilities in translational science and facilities for undertaking preclinical work and clinical trials, ensures we are in a prime position to respond when new global threats emerge.

By understanding how pathogens cause disease, through to pioneering new diagnostics, treatments and vaccines, our Institute of Infection and Global Health works to advance knowledge of the most important global health challenges.

Dedicated to improving the health and wellbeing of humans and animals, the Institute is an international centre of excellence which seamlessly brings together doctors, veterinarians and scientists to collaborate on major pathogens such as Zika virus, Ebola virus and many others.

We are at the forefront of the 'one health' agenda. Our strong interdisciplinary approach brings together medical and veterinary science with a focus on emerging infectious diseases and zoonoses (diseases that spread from animals to humans).

Find out more about research at Liverpool at www.liverpool.ac.uk/research/research-at-liverpool/ and our interdisciplinary research on Infectious Diseases at www.liverpool.ac.uk/research/research-at-liverpool/research-themes/infectious-diseases/



Spotlight on Faculty of Health and Life Sciences

World-class research facilities with an emphasis on interdisciplinary research and the generation of impact.

The University of Liverpool provides one of the largest concentrations of health and life science expertise in the UK. Students are exposed to the latest research, benefit from expert teaching and supervision, and gain highly respected University of Liverpool qualifications. Our PhD completion rates are amongst the highest in the UK; we were rated third in the UK for PhD completion in the most recent HEFCE analysis.

Liverpool is one of the most creative, inspiring and cost-effective cities in the UK. With its diverse and challenging urban health population, the city provides a valuable setting for research in the health and life sciences.

The Faculty of Health and Life Sciences covers a spectrum of health and disease related research from our world-leading research into drug safety, infectious diseases, and personalised medicine, to our emerging areas such as food security, neuroscience and biomedical engineering.

See pages 36 to 40 for a full list of the master's programmes we offer.



Case Study

I chose to study my master's at Liverpool because I'd had a great experience during my undergraduate degree here having made valuable connections in the Department. However, the most important factor for me was the quality of the programme; it is thorough and equips students with the tools to become successful researchers. My master's course was very small, so I enjoyed the interaction between lecturers and students. It allowed for stimulating classroom discussions and helped me to develop a deeper understanding of the topics at hand. It also allowed our course to become a tight-knit group who worked and socialised together. I had support from my tutors with my assignments, with choosing where to apply for further study and references.

My course specifically prepared me for social sciences research and was invaluable to me when applying to undertake my PhD. My advice to anyone considering postgraduate study is carefully consider your goals and what you aim to achieve. Then, choose your course to take you to this goal.

Céline Chalupa, Research Methods in Psychology MSc graduate

*Celine is now studying a PhD
in 'Mixed effects modelling,
behavioural economics, pricing
elasticity, and machine learning'
here at the University of Liverpool.*

Master's programmes 2019

Faculty of Humanities and Social Sciences

Programme	Home/ EU fees	Overseas fees	Full-time	Part-time	Campus
Archaeology, Classics and Egyptology					
Archaeology MA	£7,250	£15,500	12 months	24 months	Liverpool
Archaeology MSc	£7,250	£15,500	12 months	24 months	Liverpool
Archaeology MRes	£4,260	£16,150	12 months	24 months	Liverpool
Classics and Ancient History MA	£7,250	£15,500	12 months	24 months	Liverpool
Classics and Ancient History MRes	£4,260	£16,150	12 months	24 months	Liverpool
Egyptology MA	£7,250	£15,500	12 months	24 months	Liverpool
Egyptology MRes	£4,260	£16,150	12 months	24 months	Liverpool
Palaeoanthropology MSc	£7,250	£15,500	12 months	24 months	Liverpool
Palaeoanthropology MRes	£4,260	£16,150	12 months	24 months	Liverpool
Architecture					
Master of Architecture MArch	£9,250	£19,250	24 months		Liverpool
Architecture MA	£7,250	£16,200	12 months		Liverpool
Arts: Architecture MRes	£4,260	£16,150	12 months	24 months	Liverpool
Building Information Modelling MSc	£7,250	£16,200	12 months	24 months	Liverpool
Sustainable Environmental Design in Architecture (SEDA) MSc	£7,250	£16,200	12 months		Liverpool
Advanced Transdisciplinary Design MSc	£11,500	£21,300	12 months	24 months	London
Communication and Media					
Arts: Communication and Media MRes	£4,260	£16,150	12 months	24 months	Liverpool
Media and Communication MA (pathways in Digital Culture and Communication, and Media and Politics)	£7,250	£16,450	12 months	24 months	Liverpool
Strategic Communication MSc	£14,350	£21,500	12 months	24 month	London
English					
Applied Linguistics MA	£7,450	£16,900	12 months		Liverpool
Teaching English to Speakers of Other Languages (TESOL) MA	£7,450	£16,900	12 months		Liverpool
Arts: English MRes	£4,260	£16,150	12 months	24 months	Liverpool
English MA (pathways in Renaissance and Eighteenth-Century Literature, Victorian Literature, Modern and Contemporary Literature, and Science Fiction)	£7,250	£16,450	12 months	24 months	Liverpool
History					
Master in Archives and Records Management MARM	£8,600	£17,350	12 months	24 months	Liverpool
Master in Archives and Records Management (International pathway)	£8,600	£17,350	12 months	24 months	Liverpool
Archives MRes	£4,260	£16,150	12 months	24 months	Liverpool
History MA (pathways in Cultural History, Twentieth Century History, Eighteenth Century Worlds and Medieval and Renaissance Studies)	£6,850	£16,200	12 months	24 months	Liverpool

Please note the fees shown for MRes programmes are for entry 2018 and will rise for entry 2019. They may also be subject to additional bench fees. For the very latest information on available programmes and related fees please visit www.liverpool.ac.uk/study/postgraduate-taught

Programme	Home/ EU fees	Overseas fees	Full-time	Part-time	Campus
History continued					
History MRes	£4,260	£16,150	12 months	24 months	Liverpool
International Slavery Studies MA	£6,850	£16,200	12 months	24 months	Liverpool
Irish Studies					
Irish Studies MA	£6,850	£16,200	12 months	24 months	Liverpool
Irish Studies MRes	£4,260	£16,150	12 months	24 months	Liverpool
Irish Studies MA	£10,450	£21,150	12 months	24 months	London
Law					
International Economic Law LLM	£7,250	£16,800	12 months	24 months	Liverpool
International Human Rights Law LLM	£7,250	£16,800	12 months	24 months	Liverpool
Law (General) LLM	£7,250	£16,800	12 months	24 months	Liverpool
Law, Medicine and Healthcare LLM	£7,250	£16,800	12 months	24 months	Liverpool
International Business Law LLM	See online	See online		Flexible	Online
Management					
Accounting and Finance MSc	£10,500	£20,000	12 months		Liverpool
Business Analytics and Big Data MSc	£10,500	£20,000	12 months	24 months	Liverpool
Business Administration (Football Industries) PGCert	£5,500	£7,850	9 months		Liverpool
Economics MSc	£10,000	£18,000	12 months	24 months	Liverpool
Entrepreneurship MSc	£10,000	£18,000	12 months	24 months	Liverpool
Finance MSc	£10,500	£20,000	12 months	24 months	Liverpool
Football Industries MBA	£16,500	£23,500	12 months	24 months	Liverpool
Human Resource Management (CIPD Accredited) MSc	£10,150*	£19,150*	12 months	24 months	Liverpool
International Business MSc	£10,000	£19,000	12 months	24 months	Liverpool
Liverpool MBA	£16,500	£23,500	12 months	24 months	Liverpool
Master in Management MIM	£10,500	£20,000	12 months	24 months	Liverpool
Management MRes	£4,260	£16,150	12 months	24 months	Liverpool
Marketing MSc	£10,000	£19,000	12 months	24 months	Liverpool
Operations and Supply Chain Management MSc	£10,500	£19,000	12 months	24 months	Liverpool
Project Management MSc	£10,000	£18,000	12 months	24 months	Liverpool
Sports Business and Management MSc	£10,500	£20,000	12 months	24 months	Liverpool
Thoroughbred Horseracing Industries MBA	£16,500**	£23,500**		24 months	Liverpool
Accounting MSc	£13,000	£22,000	12 months		London
Banking and Finance MSc	£13,000	£22,000	12 months		London
Finance and Investment Management MSc	£13,000	£22,000	12 months		London
International Accounting MSc	£13,000	£22,000	12 months		London
Corporate Finance MSc/PGCert	See online	See online		Flexible	Online
Doctor of Business Administration DBA	See online	See online		Flexible	Online
Human Resource Management MSc/PGCert	See online	See online		Flexible	Online
International Accounting and Finance MSc/PGCert	See online	See online		Flexible	Online
International Accounting and Finance – International Financial Reporting MSc	See online	See online		Flexible	Online
International Accounting and Finance – Strategic Finance Practice MSc	See online	See online		Flexible	Online
Management MSc/PGCert	See online	See online		Flexible	Online
Management – Oil and Gas MSc	See online	See online		Flexible	Online
Marketing MSc/PGCert	See online	See online		Flexible	Online
Master of Business Administration MBA/PGCert	See online	See online		Flexible	Online
Operations and Supply Chain Management MSc/PGCert	See online	See online		Flexible	Online
Operations and Supply Chain Management – Oil and Gas MSc	See online	See online		Flexible	Online

*Includes CIPD £150 student membership fee. **Total cost for programme.

Continued over...

Programme	Home/ EU fees	Overseas fees	Full-time	Part-time	Campus
Management <i>continued</i>					
Project Management MSc/PGCert	See online	See online		Flexible	Online
Project Management – Construction and Infrastructure MSc	See online	See online		Flexible	Online
Project Management – Information Technology MSc	See online	See online		Flexible	Online
Project Management – Oil and Gas MSc	See online	See online		Flexible	Online
Strategic Finance Practice PGCert	See online	See online		Flexible	Online
Modern Languages and Cultures					
Latin American Studies MRes	£4,260	£16,150	12 months	24 months	Liverpool
Modern Languages MRes (pathways in Basque Studies, Catalan Studies, Chinese Studies, Film Studies, French Studies, German Studies, Hispanic Studies, Italian Studies, Portuguese Studies, Spanish Studies)	£4,260	£16,150	12 months	24 months	Liverpool
Music					
Arts: Music MRes	£4,260	£16,150	12 months	24 months	Liverpool
Music MMus	£7,250	£16,450	12 months	24 months	Liverpool
Music Industry Studies MA	£7,250	£16,450	12 months	24 months	Liverpool
The Business of Classical Music MA	£11,000	£20,800	12 months		Liverpool
Philosophy					
Arts: Philosophy MRes	£4,260	£16,150	12 months	24 months	Liverpool
Art, Aesthetics and Cultural Institutions MA	£7,250	£16,450	12 months	24 months	Liverpool
Philosophy MA	£7,250	£16,450	12 months	24 months	Liverpool
Politics					
International Relations and Security MA	£6,850	£15,500	12 months	24 months	Liverpool
International Relations and Security MRes	£4,260	£16,150	12 months	24 months	Liverpool
Sociology, Social Policy and Criminology					
Criminological Research MRes	£4,260	£16,150	12 months	24 months	Liverpool
Social Research MRes	£4,260	£16,150	12 months	24 months	Liverpool
Social Research Methods MA	£6,650	£15,050	12 months	24 months	Liverpool

Faculty of Science and Engineering

Programme	Home/ EU fees	Overseas fees	Full-time	Part-time	Campus
Chemistry					
Advanced Chemical Sciences MSc	£9,000	£21,150	12 months	24 months	Liverpool
Computer Science					
Advanced Computer Science MSc	£8,200	£20,550	12 months	24 months	Liverpool
Advanced Computer Science MSc with a Year in Industry	£9,850**	£24,650**	24 months		Liverpool
Advanced Computer Science with Internet Economics MSc	£8,200	£20,550	12 months	24 months	Liverpool
Advanced Computer Science with Internet Economics MSc with a Year in Industry	£9,850**	£24,650**	24 months		Liverpool
Big Data and High Performance Computing MSc	£8,200	£20,550	12 months	24 months	Liverpool
Big Data and High Performance Computing MSc with a Year in Industry	£9,850**	£24,650**	24 months		Liverpool
Computer Science MSc	£8,200	£20,550	12 months	24 months	Liverpool
Big Data Analytics MSc/PGCert/PG Award	See online	See online		Flexible	Online
Cyber Crime Prevention PG Award	See online	See online		Flexible	Online

Please note the fees shown for MRes programmes are for entry 2018 and will rise for entry 2019. They may also be subject to additional bench fees. For the very latest information on available programmes and related fees please visit www.liverpool.ac.uk/study/postgraduate-taught

Programme	Home/ EU fees	Overseas fees	Full-time	Part-time	Campus
Computer Science <i>continued</i>					
Cyber Security MSc/PGCert	See online	See online		Flexible	Online
Data-Driven Decision Making PG Award	See online	See online		Flexible	Online
Data Visualisation and Warehousing PG Award	See online	See online		Flexible	Online
Information Systems Management MSc/PGCert	See online	See online		Flexible	Online
Information Technology MSc/PGCert	See online	See online		Flexible	Online
Information Technology Leadership PGCert	See online	See online		Flexible	Online
Software Engineering MSc/PGCert	See online	See online		Flexible	Online
Strategic Technology Innovation PGCert	See online	See online		Flexible	Online
Earth, Ocean and Ecological Sciences					
Applied Ecology and Conservation MRes	TBC	TBC	12 months		Liverpool
Petroleum Reservoir Geoscience MSc	£11,300	£26,700	12 months		Liverpool
Electrical Engineering and Electronics					
Energy and Power Systems MSc (Eng)	£9,000	£20,550	12 months	24 months	Liverpool
Energy and Power Systems MSc (Eng) with a Year in Industry	£10,500**	£24,650**	24 months		Liverpool
Microelectronic Systems MSc (Eng)	£9,000	£20,550	12 months	24 months	Liverpool
Microelectronic Systems MSc (Eng) with a Year in Industry	£10,500**	£24,650**	24 months		Liverpool
Sensor Technologies and Enterprise MSc*	TBC	TBC	24 months		Liverpool
Telecommunications and Wireless Systems MSc (Eng)	£9,000	£20,550	12 months	24 months	Liverpool
Telecommunications and Wireless Systems MSc (Eng) with a Year in Industry	£10,500**	£24,650**	24 months		Liverpool
Engineering					
Advanced Aerospace Engineering MSc (Eng)	£8,600	£20,550	12 months		Liverpool
Advanced Manufacturing Systems and Technology MSc (Eng)	£8,600	£20,550	12 months		Liverpool
Advanced Mechanical Engineering MSc (Eng)	£8,600	£20,550	12 months		Liverpool
Biomedical Engineering MSc (Eng)	£8,600	£20,550	12 months		Liverpool
Decision Making Under Risk and Uncertainty MRes	£4,260	£16,150	12 months	24 months	Liverpool
Product Design and Management MSc (Eng)	£8,600	£20,550	12 months		Liverpool
Risk and Uncertainty MSc (Eng)	£6,950	£16,150	12 months		Liverpool
Sustainable Civil and Structural Engineering MSc (Eng)	£8,600	£20,550	12 months		Liverpool
Advanced Transdisciplinary Design MSc	£11,500	£21,300	12 months	24 months	London
Geography and Planning					
Contemporary Human Geography (Research Methods) MA	£6,950	£16,150	12 months	24 months	Liverpool
Data Analytics and Society MSc/PhD	TBC	TBC	4 years		Liverpool
Environmental Assessment and Management MSc	£7,600	£16,350	12 months	24 months	Liverpool
Environment and Climate Change MSc	£8,400	£20,250	12 months	24 months	Liverpool
Environmental Sciences MSc	£8,400	£20,250	12 months		Liverpool
Geographic Data Science MSc	£7,600	£17,200	12 months		Liverpool
Marine Planning and Management MSc	£7,450	£16,900	12 months	24 months	Liverpool
Town and Regional Planning MA	£6,950	£16,150	12 months	24 months	Liverpool
Town and Regional Planning MCD	£7,550	£16,350	12 months	24 months	Liverpool
Urban Design and Property Development MSc	£11,550	£21,300	12 months		London
Urban Planning MSc	£11,550	£21,300	12 months		London
Mathematical Sciences					
Financial Mathematics MSc	£9,000	£20,750	12 months		Liverpool
Mathematical Sciences MSc	£7,600	£16,900	12 months	24 months	Liverpool
Financial and Actuarial Mathematics MSc	£11,550	£22,750	12 months		London
Physics					
Nuclear Science and Technology MSc	See ntec.ac.uk		12 months	36 months	Various
Radiometrics: Instrumentation and Modelling MSc	£9,000	£20,650	12 months	Up to 6 years	Liverpool

*Subject to University approval. **Total cost for programme.

Faculty of Health and Life Sciences

Programme	Home/ EU fees	Overseas fees	Full-time	Part-time	Campus
Dentistry					
Endodontics DDSc	£17,816**	£40,790**		36 months	Liverpool
Orthodontics DDSc	£8,114**	£33,949**		36 months	Liverpool
Paediatric Dentistry DDSc	£7,504**	£33,949**		36 months	Liverpool
Special Care Dentistry DDSc	£7,504**	£33,949**		36 months	Liverpool
Health Sciences					
Advanced Practice in Healthcare MSc	£8,000	£19,320		3-6 years	Liverpool
Nursing MSc	£8,000	£19,320*	12 months	Up to 6 years	Liverpool
Radiotherapy PGDip	£18,500**	N/A	24 months		Liverpool
Radiotherapy MSc	£2,500***	N/A		Up to 6 years	Liverpool
Institute of Ageing and Chronic Disease					
Clinical Sciences MRes	£7,260**	£22,850**	12 months	24 months	Liverpool
Musculoskeletal Ageing MRes	£7,500**	£22,850**	12 months		Liverpool
Institute of Integrative Biology					
Advanced Biological Sciences MRes	£7,260**	£22,850**	12 months	24 months	Liverpool
Institute of Infection and Global Health					
Clinical Sciences MRes	£7,260**	£22,850**	12 months	24 months	Liverpool
Institute of Translational Medicine					
Biomedical Sciences and Translational Medicine MRes	£7,260**	£22,850**	12 months		Liverpool
Life Sciences					
Advanced Biological Sciences MSc	£8,650	£19,800	12 months	24 months	Liverpool
Medicine					
Master of Public Health MPH	£8,900	£19,850	12 months	24-36 months	Liverpool
Renal Transplantation Science MSc/PGDip/PGCert	See online	See online		Flexible	Online
Master of Public Health MPH/PGCert	See online	See online		Flexible	Online
Master of Public Health MPH – International Public Health	See online	See online		Flexible	Online
Master of Public Health MPH – Management of Health Systems	See online	See online		Flexible	Online
Psychology					
Doctor of Clinical Psychology DClinPsy	TBC	TBC	36 months		Liverpool
Investigative and Forensic Psychology MSc	£8,900	£19,000	12 months		Liverpool
Research Methods in Psychology MSc	£8,650	£19,000	12 months		Liverpool
Coaching and Talent Management PG Award	See online	See online		Flexible	Online
Cognitive Behavioural Therapy PG Award	See online	See online		Flexible	Online
Leadership and Organisational Development PG Award	See online	See online		Flexible	Online
Mental Health Psychology MSc	See online	See online		Flexible	Online
Organisational and Business Psychology MSc	See online	See online		Flexible	Online
Psychology MSc/PGCert	See online	See online		Flexible	Online
Veterinary Science					
Bovine Reproduction DBR	See online	See online		24 months	Liverpool
Certificate in Advanced Veterinary Practice CertAVP	See online	See online		Flexible	Online
Veterinary Business Management CertVBM	See online	See online		Flexible	Online
Veterinary Physiotherapy MSc/PGDip	See online	See online		Flexible	Online
Veterinary Professional Studies MSc/PGDip/PGCert	See online	See online		Flexible	Online

*Plus £3,000 English language support. **Total cost for programme. ***60 credit dissertation.

Please note the fees shown for DDSc and MRes programmes are for entry 2018 and will rise for entry 2019. They are also inclusive of bench fees. For the very latest information on available programmes and related fees please visit www.liverpool.ac.uk/study/postgraduate-taught

Contact us

Enquiries Team

Our dedicated central enquiries team can help with all your queries about becoming a University of Liverpool student, and with questions regarding your application.



Please feel free to call us on
T: +44 (0)151 794 5927 and speak to one of our advisers. Our lines are open Monday to Friday, 9am to 5pm.



You can also reach us at
E: pgrecruitment@liverpool.ac.uk



View frequently asked questions, ask your own question or chat to us live at <http://ask.liv.ac.uk>

The best thing about my course is that every student completes an internship in different cultural institutions as part of the programme. This not only complements our theory study but also gives students work experience opportunities.

Yiwen Li

Art, Aesthetics and Cultural Institutions MA



Master's Programmes

The University of Liverpool L69 7ZX

www.liverpool.ac.uk/study/postgraduate-taught

