

Contents

Welcome	3
What BSMS postgraduate courses offer	5
Studying at Brighton and Sussex Medical School	6
Exceptional education	8
Postgraduate taught courses	10
Flexible, modular learning	12
Continuing professional development	13
International student programme	14

POSTGRADUATE COURSES

Research programme	54
Our teachers	56
How to apply	61
How to find us	63

Anaesthesia and Perioperative Medicine	16
Cardiology	18
Clinical Education	20
Clinical Professional Studies	22
Clinical Radiology	24
Dementia Studies	26
Diabetes in Primary Care	28
Global Health	30
Global Pharmacy	32
Healthcare Leadership and Commissioning	34
Internal Medicine	36
Medical Education	38
Medical Research	40
Paediatrics and Child Health	42
Physician Associate Studies	44
Psychiatry	46
Public Health	48
Simulation in Clinical Practice	50
Surgical Studies	52



Welcome

We are delighted that you are considering postgraduate study at Brighton and Sussex Medical School (BSMS), whether as the next step in your own career or to develop your staff and trainees.

BSMS is one of the most highly regarded medical schools in the UK. As a partnership between the Universities of Sussex and Brighton and the NHS, we pride ourselves on providing high-quality clinical and professional healthcare training in a nurturing learning environment.

We provide a broad portfolio of postgraduate taught courses that have been designed to meet the learning needs of clinicians and other health professionals working in an increasingly complex healthcare sector. These courses range from individual continuing professional development modules to postgraduate certificates and diplomas, and full Masters.

Over the last few years we have worked closely with our colleagues in the region to expand the scope of our postgraduate offering and have added several new areas of study. In the past year we have enhanced our very successful programme for physician associates by providing a full Masters in Physician Associate Studies.

We have also responded to the needs of both clinical and non-clinical healthcare providers, delivering a wide range of tailored courses in Mental Health and Healthcare Leadership and Commissioning. You can read more about our bespoke options on pages 12 and 13.

Our aim is to enable you to deliver high-quality healthcare – be it regionally, nationally or globally. We look forward to meeting your professional development needs.



A handwritten signature in blue ink, appearing to read 'M Reed'.

Professor Malcolm Reed
Dean, BSMS



A handwritten signature in blue ink, appearing to read 'Gordon Ferns'.

Professor Gordon Ferns
Head of the Department of
Medical Education, BSMS

The Universities of Sussex and Brighton are immensely proud of the success of our medical school. BSMS has developed a strong and diverse portfolio of postgraduate courses, informed by our high-quality research, relevant to the workplace and multidisciplinary in nature.

Our graduates are gaining significantly from this experience and are increasingly well prepared to meet the challenges of an evolving healthcare sector. We are committed to high academic and professional standards, as well as to meeting the needs of students as individuals. We welcome you in considering BSMS.

A handwritten signature in blue ink, appearing to read 'Debra Humphris'.

Professor Debra Humphris
Vice-Chancellor, University of Brighton

A handwritten signature in blue ink, appearing to read 'Adam Tickell'.

Professor Adam Tickell
Vice-Chancellor, University of Sussex



What BSMS postgraduate courses offer

Enabling better healthcare –
regionally, nationally and globally

Clinical and professional combined

All our clinical courses include professional modules as standard, ensuring that students develop the skills and knowledge to meet the challenges of a changing health and social care sector.

Strong multidisciplinary learning

Our courses bring together a vibrant mix of professionals from a variety of health and social care backgrounds. As a result, students gain valuable insights into other disciplines, leading to stronger team working – and, ultimately, to better patient care.

Responding to changing healthcare needs

We tailor our courses to reflect the current changes taking place within the wider healthcare environment, including the NHS, local authorities and independent or third sector providers delivering or planning services.

Nationally and globally relevant

Our courses are delivered by high-level practitioners, who base their teaching on the latest research and case studies. Prominent guest lecturers add to the student experience. This ensures the knowledge is relevant and translatable to both national and international healthcare settings.

Regionally significant

For those based in southern England, our course content draws on regional experience with local professionals delivering the course, using relevant research and case studies that are directly applicable to the regional health sector.

Benefit of two universities and local NHS trusts

BSMS is a partnership between the Universities of Sussex and Brighton with local NHS providers, and all courses are validated by both universities. Each has a strong reputation in medical and healthcare teaching and research. Some clinical courses also take place in NHS trusts which work closely with both universities.

Conveniently located with excellent transport links

BSMS is just over an hour from London, and 45 minutes from Gatwick Airport. Most courses are delivered at the main campus at Falmer or at nearby NHS centres. The vibrant city and seafront of Brighton are just four miles away.

“The best thing is having the flexibility to complete an MSc alongside full-time work and medical training. The range and scope of options and support available are very impressive and the curriculum is tailored to confer an advantage when applying for competitive consultant posts.”

Dr Alice Brooke
Core Psychiatry Trainee

Studying at Brighton and Sussex Medical School



The vibrant seaside city of Brighton and Hove offers an impressive array of restaurants, bars, specialist shops, museums, galleries and other attractions.

The city has a very rich and diverse cultural life and boasts many theatres, cinemas and music venues. The Brighton Festival takes place in May every year and is the second largest arts festival in the UK, showcasing a wide variety of art, music and performance.

Brighton and Sussex Medical School (BSMS) is located across two university campuses at Falmer, four miles north of Brighton. Most postgraduate teaching takes place on the University of Brighton Falmer campus.

Falmer is very well served by public transport, with regular rail and bus services running directly into both campuses, and is easily accessed by road. The village of Falmer is located on the edge of the South Downs National Park, with beautiful countryside just minutes away.

BSMS is run in partnership by the Universities of Sussex and Brighton, and all postgraduate courses lead to joint awards. Our students are full members of both universities and are entitled to make use of the facilities each institution has to offer.



Support and facilities

Campus facilities

There are a number of catering outlets on both campuses, from small café bars to self-service restaurants. The Students' Union runs a shop and café on the Brighton campus during term time. A number of facilities are available on the Sussex campus including a bank, post office, supermarket and pharmacy.

Student Services

Student Services provide a range of support to students throughout their courses to help ensure they get the most out of their experience. They offer professional support and advice on career development, finance and welfare, along with counselling services.

Learning resources and libraries

BSMS students have access to the full range of learning resources at the University of Brighton, the University of Sussex, and Brighton and Sussex University Hospitals NHS Trust. Resources include libraries, media centres and computer rooms.

The University of Brighton has libraries in Falmer, Brighton, Eastbourne and Hastings. The University of Sussex Library is located on the Sussex campus. Both universities offer online library services.

Sport

As members of both universities, BSMS students can use the sporting facilities offered by the University of Brighton and the University of Sussex. Sports facilities across both campuses include sports halls, fitness rooms, dance classes and studios, squash and tennis courts, and football, rugby and floodlit astro turf pitches.

Childcare

Both universities offer nurseries and students may enquire and apply for a nursery place once an offer from the university has been accepted.

Disability and dyslexia

BSMS believes that every student should have an equal opportunity to acquire knowledge and prove their ability. The Disability and Dyslexia team at the University of Brighton is on hand to discuss the specific needs of students and reasonable adjustments can be made to teaching and learning delivery. The team is able to offer advice on all aspects of studying with a disability or dyslexia.

For more detailed information on the support and facilities offered please visit the following websites:

University of Brighton:
brighton.ac.uk

University of Sussex:
sussex.ac.uk

Exceptional education

At BSMS we place the quality of the student's learning experience at the heart of all our activities, in an environment which is intellectually challenging and enjoyable for a diverse body of students and staff.

We deliver an exciting, relevant, balanced and well-taught range of postgraduate courses which emphasise the importance of research, both to inform teaching and also as a key skill for students.

Subject leadership is offered by professionals of the highest academic calibre, supported by a wide selection of high-quality speakers who are leading experts in their fields. BSMS is characterised by outstanding personal support for students and a commitment to listen and respond positively to student feedback.



“In 2018 BSMS was granted a Silver Athena SWAN award, demonstrating our success in taking action to improve gender equality at BSMS. Our Inclusivity team looks at issues across the diversity strands to improve the working environment for everyone at the school.”

Jenny Holmes
Project Officer (Diversity and Inclusivity)

Ensuring equality and diversity

Our medical school is based on fundamental values of friendliness, kindness and community allied to excellence in education and deliberately chosen areas of research.

We believe that all people involved with our school should feel welcome and respected, and be valued for the positive contributions they can make.

The school has a commitment to equality and diversity, including protected characteristics such as sex, race, disability, religion and belief, age, gender reassignment, pregnancy and maternity, marriage and civil partnership and sexual orientation.

BSMS strives to provide a higher education environment that is intellectually challenging and enjoyable for a diverse body of students and staff, underpinned by a culture of mutual respect.

We believe that, as a result, we are helping equip students to provide best medical practice in a complex and changing healthcare system.



Postgraduate taught courses

BSMS offers a range of full-time (one year) and part-time taught postgraduate courses up to Masters level in subjects relevant to medicine and healthcare and the delivery of the national curriculum framework for specialist training.



Courses are modular and lead to the following awards:

- **Masters**
Successful completion of a minimum of four to six taught modules plus a dissertation
- **Postgraduate Diploma**
Successful completion of four to six taught modules
- **Postgraduate Certificate**
Successful completion of three taught modules.

Unless otherwise stated on the relevant course page of our website, successful completion of a module is awarded 20 Masters level credits and requires 200 hours of student input, mainly through independent study. Every module has its own method of presentation and assessment. Some taught modules associated with postgraduate courses are also available to take individually as continuing professional development (see pages 12-13).

Mode of study

Modules are taught either extensively over a semester or intensively in blocks of two to five days (see relevant course web page). Many courses offer a choice of full-time study over a year or part-time study over a longer period to suit individual needs, up to a maximum of five years.

Dissertation

All Masters courses include a research-based dissertation on a relevant topic of interest, which students are encouraged to publish. Students are supported by a dissertation supervisor and by an extensive programme of research skills workshops that include: interview skills, analysing qualitative data, statistical analysis, and sampling and sample size.

Course	Award	Eligible applicants	Mode
Anaesthesia and Perioperative Medicine	MSc • PGDip • PGCert	UK • EU	PT
Cardiology	MSc • PGDip • PGCert	UK • EU • International	FT or PT
Clinical Education	MSc • PGDip	UK • EU	PT
Clinical Professional Studies	PGCert	UK • EU • International	FT or PT
Clinical Radiology	MSc • PGDip • PGCert	UK • EU	PT
Dementia Studies	MSc • PGDip • PGCert	UK • EU • International	FT or PT
Diabetes in Primary Care	PGCert	UK • EU	PT
Global Health	MSc • PGDip • PGCert	UK • EU • International	FT or PT
Global Pharmacy	MSc • PGDip • PGCert	UK • EU • International	FT or PT
Healthcare Leadership and Commissioning	MSc • PGDip • PGCert	UK • EU • International	FT or PT
Internal Medicine	MSc • PGDip • PGCert	UK • EU • International	FT or PT
Medical Education	PGCert	UK • EU	PT
Medical Research	MRes • PGCert	UK • EU • International	FT or PT
Paediatrics and Child Health	MSc • PGDip • PGCert	UK • EU • International	FT or PT
Physician Associate Studies	MSc	UK • EU	FT
Psychiatry	MSc • PGDip • PGCert	UK • EU	PT
Public Health	MSc • PGDip • PGCert	UK • EU • International	FT or PT
Simulation in Clinical Practice	PGCert	UK • EU	PT
Surgical Studies	MSc • PGDip • PGCert	UK • EU • International	FT or PT

Flexible, modular learning

Our modular course structure allows flexible study options for part-time learning. Many modules can be studied as stand-alone units or as part of a multi-year programme of part-time study leading to a postgraduate qualification.

Single modules

Most modules involve approximately 35 hours of face-to-face teaching accompanied by 165 hours of independent learning. Teaching is usually an intensive five-day block over one week, although some modules are taught over several weeks. For detailed information on eligibility requirements, teaching format and assessment methods for each of our modules, visit: bsms.ac.uk/pg-single-modules

Build towards an academic qualification

Each module is worth 20 level 7 credits. Modules can be taken individually or can build towards an academic qualification if desired. Where relevant, candidates may gain credits via recognition of prior learning (RPL) gained at another academic institution. Some qualifications require completion of mandatory modules (these vary by qualification); in many instances these are combined with your choice of optional module(s) to achieve the credits required for the award.

Fees

The fee for each of our single modules is £892.

Further information

For more information about any of our modules, or for advice about single module registration and part-time study towards a qualification, contact dme@bsms.ac.uk



Continuing professional development

BSMS offers a variety of continuing professional development (CPD) opportunities to help you to develop new skills and update your current knowledge base.

Single modules as CPD

Our extensive range of postgraduate taught modules cover clinical, professional and research subjects in depth. Many of these individual modules can be taken for CPD purposes alone. Standard single module registration processes and fees apply (see previous page); participants can opt out of assessments in advance to be awarded a certificate of completion for their CPD portfolio.

Postgraduate study, including independent study, can be recorded as external CPD hours. For further information on CPD requirements and how to claim postgraduate study as CPD, please see advice published by the relevant royal college, approving body or organisation.

Short courses and workshops

BSMS provides a wide variety of short courses and workshops throughout the year, covering four main domains:

Clinical workshops

.....

[Cardiology in Primary Care](#)

[Diabetes Update for Clinicians](#)

[ALS/ILS](#)

General workshops

.....

[Clinical/Educational Supervisor Course](#)

[Effective Presentations Training](#)

[Teaching and Innovation in Medical Education \(TIME\)](#)

[Personal and Professional Development Master classes](#)

Conferences

.....

[Heath Education Conference](#)

[Inclusion Health Day](#)

[Research Symposia](#)

Psychiatry updates

.....

[Approved Clinician Refresher](#)

[Forensic Psychiatry Update](#)

[Leadership for Psychiatrists](#)

[Physical Health Updates for Psychiatrists](#)

[Psychopharmacology Update](#)

[Section 12\(2\) Refresher](#)

Bespoke options

Many of our workshops and short courses are bespoke educational packages commissioned by local healthcare organisations. BSMS can partner with your organisation to help meet your staff development requirements.

If your desired CPD opportunity is not listed, please visit bsms.ac.uk/cpd or contact cpd@bsms.ac.uk to discuss your requirements.

International student programme

BSMS provides a range of benefits for international students, including preparation in language and study skills and dedicated support from tutorial staff.

Postgraduate courses suitable for study by international students include:

- Cardiology
- Clinical Professional Studies
- Dementia Studies
- Global Health
- Global Pharmacy
- Healthcare Leadership and Commissioning
- Internal Medicine
- Medical Research
- Paediatrics and Child Health
- Public Health
- Surgical Studies

Full-time courses are studied over a one-year period. Courses may be taken on a part-time basis, subject to visa requirements.

For further information and details of courses which are suitable for international students please visit:

bsms.ac.uk/postgraduate/international

“One of the best decisions I’ve made in my life was to do my Masters at BSMS. As an overseas student, I had all the care and support I needed. It was a great year, my supervisors were super and I wish I could turn back time to be there again.”

Wiaam Alaa
MSc Public Health graduate

The international student programme at BSMS offers excellent support including:

- preparation in language and study skills
- an introduction to healthcare and life in the UK
- dedicated support services and a member of staff as a first contact point
- a personalised learning experience, with small group seminars and workshops
- research training relevant to the needs of international students

- professional modules in leadership, communication, learning and teaching, in which a wide range of international students study together
- in-depth study at the cutting edge of clinical and health practice
- a research dissertation in an area relevant to improving healthcare in the student’s home country.





MSc • PGDip • PGCert

Open to

UK • EU applicants

Start date

September 2019

Mode of study

Part-time: 3 years

Course locations

- Princess Royal Hospital, Haywards Heath
- University of Brighton, Falmer

Course Leader

Dr Chris Carey

Entry requirements

Applicants should have a medical degree plus a minimum of two years' UK NHS experience in anaesthesia. Applicants are normally expected to be in clinical practice throughout the course.

Bursaries may be available, please check the course web page for more details.

About this course

The course is based on areas of clinical practice and professional skills that are relevant to all anaesthetic trainees. Face-to-face tuition will be provided in cutting-edge aspects of patient care. The course uses an evidence-based approach to provide knowledge of clinical practice which extends beyond the scope of the training programme and represents many of the most important areas of development for clinical anaesthesia. It also includes modules which enable students to gain an in-depth understanding of the professional skills essential for a successful career in the NHS.

Who is it for?

The Anaesthesia and Perioperative Medicine postgraduate course covers areas that are relevant to all anaesthetic trainees. It is suitable for doctors who have at least two years' experience in anaesthesia in the UK.

Stand-alone modules

The clinical modules can all be taken as stand-alone modules as part of continuing professional development.

bsms.ac.uk/pg-single-modules

Key areas of study

- Assessment and optimisation
- High-risk anaesthesia
- Emergency care
- Research methods and critical appraisal
- Communication, learning and teaching in health and social care
- Leadership and change management in clinical services

What are the benefits?

Students will be able to develop the skills to become the high-achieving consultants and clinical leaders of the future. Tuition is provided in both clinical practice and key professional skills including leadership, service development, research skills and an appreciation of evidence-based practice.



“The strength of this specific course lies in the face-to-face classroom teaching sessions. Discussions with knowledgeable figures in this field and the exchange of views and ideas provide a wealth of knowledge hard to achieve by distance learning.”

Dr Rasha Abouelmagd

MSc Anaesthesia and Perioperative Medicine student





MSc • PGDip • PGCert

Open to

UK • EU • International applicants

Start date

September 2019

Mode of study

Full-time: 1 year

Part-time: 3 years

Course location

• University of Brighton, Falmer

Course Leader

Dr Sean O’Nunain

Entry requirements

The course is open to post-registration doctors and qualified practitioners in any profession allied to medicine. Those with a first degree will have a minimum of two years’ clinical practice; those without will have a minimum of five years’ post-qualification practice in cardiology. Applicants who do not hold a first degree will initially register for either a Postgraduate Certificate or a Postgraduate Diploma award.

For international students a minimum IELTS score of 7.0 is required.

Bursaries may be available, please check the course web page for more details.

About this course

This internationally recognised course is designed to train healthcare professionals to be the clinical leaders of the future by providing a mix of clinical and professional knowledge relevant to the practice of cardiology in contemporary healthcare. Learning in key professional domains includes service leadership and development, research, commissioning and communication and teaching. The cardiology content of the course provides comprehensive learning to meet the professional development needs of a wide range of practitioners working in cardiology.

Who is it for?

The course is designed to provide advanced professional education for a wide range of practitioners with a career interest in cardiology. It is suitable for doctors aspiring to specialist positions. The course has a multi-professional focus and is also suitable for nurses, pharmacists, paramedic practitioners, radiographers and cardiac physiologists who wish to develop a specialist interest in cardiology at Masters level.

Key areas of study

- Communication, learning and teaching in health and social care
- Acute cardiology principles and practice
- Fundamentals of cardiac diagnostic procedures and investigations
- Invasive and interventional cardiology
- Research methods and critical appraisal
- Leadership and change management in clinical services
- Quality, safety and service improvement in clinical services

What are the benefits?

On completion of the course, students will have developed a broad and systematic understanding of cardiovascular medicine and will be equipped to translate this knowledge into good practice. Students will also have acquired a portfolio of advanced research, leadership, and communication and learning skills to support the development of a specialist interest in cardiology and enhance their future career opportunities.



“The Acute Cardiology module definitely had a positive effect on my practice in cardiology. It allowed me to review and discuss the main topics which I am most likely to encounter working in this field.”

Ebrahim Alskaf
MSc Cardiology student



MSc • PGDip

Open to
UK • EU applicants

Start date
September 2019

Mode of study
Part-time: 1-3 years

Course location
• University of Brighton, Falmer

Course Leader
Dr Jim Price

Entry requirements
The Postgraduate Diploma and Masters courses are open to health professionals who will normally have completed a Postgraduate Certificate in Medical Education or Simulation in Clinical Practice at BSMS, or the equivalent from other institutions. It is expected that teaching will form a significant element in your professional role.

About this course

The overall aim of the course is to promote knowledge of, and research into, learning, teaching and communication in a clinical context, together with facilitating a reflective awareness of participants' related skills and their ongoing development. The course allows candidates to progress from initial PGCert level to PGDip and MSc level qualifications. The Diploma route will normally take a year, while progression to the Masters degree entails completion of an in-depth research project, normally taking a further year.

Who is it for?

The course is aimed at professionals from medical and other clinical backgrounds who are involved in teaching, or proposing to teach, medical students, doctors or other healthcare professionals. Participants will wish to develop their teaching, learning and communication skills to a high standard. Applicants will also be interested in the academic evidence base for medical and clinical education, and at Masters level will have the opportunity to pursue an in-depth, research-based dissertation.

Key areas of study

- Professional identity as a teacher
- Pedagogical practice in medical education
- Advanced communication skills and strategies in medical education
- Technology-enhanced learning
- Simulation studies
- Leadership and facilitation
- Evidence-based clinical academic practice
- Clinical education research and methodology

What are the benefits?

The course provides health professionals who have a significant element of education within their clinical work with the credibility, credentialing and personal development opportunities to become excellent specialist medical and clinical educators. Successful candidates will have the opportunity to further their career in clinical education as well as clinical practice, and will have the academic grounding to confidently address educational issues and standards in their professional roles as clinicians and educators.



“The course was extremely dynamic and included varied content and learning opportunities developed from peer-reviewed teaching practice, group discussions and group communication exercises. The focus on excellent teaching at BSMS also means that you benefit from fantastic practical experience of teaching undergraduate students.”

Dr Camilla Tooley

Clinical Teaching Fellow in Medicine and Surgery at Epsom and St Helier University Hospitals NHS Trust





PGCert

Open to

UK • EU • International applicants

Start date

September 2019

Mode of study

Full-time: 1 year

Part-time: 3-5 years

Course location

- University of Brighton, Falmer
- University of Sussex, Falmer

Course Leader

Ms Jackie Knight

Entry requirements

Entry is open to all medical trainees, physician associates, locally employed doctors, specialty associate doctors and other healthcare professionals. Students should normally have at least one year of professional practice before entering the course.

For international students a minimum IELTS score of 7.0 is required.

About this course

This course will provide a rounded education to prepare senior specialists for clinical practice, taking into account their academic and professional development needs. Participants will study both theory and practical skills in a range of subjects that cover the three core domains of research, leadership and education.

Who is it for?

The PGCert Clinical Professional Studies is designed to meet the career development needs of healthcare professionals, in particular: medical, surgical, psychiatry and GP trainees; physician associates; locally employed doctors and specialty associate doctors.

Key areas of study

Three professional modules:

- Research methods and critical appraisal
- Leadership and change management in clinical services
- Communication, learning and teaching in health and social care

It is possible to substitute another module from the BSMS Department of Medical Education portfolio for one of the above modules.

What are the benefits?

The course will help develop the careers of medical and healthcare professionals, supporting them to become better-rounded clinical professionals. The knowledge, skills and practice they gain will enable them to be more effective senior clinicians, to prepare them to undertake greater leadership roles in the future.



“This course has helped to develop my skills as an educator. It has also provided me with new insights into the role of communication skills in education as well as in practice.”

Dr Shereen Habib

Specialty Doctor and Teaching Fellow





MSc • PGDip • PGCert

Open to

UK • EU applicants

Start date

September 2019

Mode of study

Part-time: 4 years

Course location

- University of Brighton, Falmer
- University of Sussex, Falmer

Course Leader

Dr Phil Thompson

Entry requirements

Applicants should have a medical degree plus a minimum of two years' postgraduate experience or a degree in a profession allied to clinical radiology. Applicants are normally expected to be in clinical practice in the UK throughout the course.

About this course

The clinical modules of this course allow in-depth coverage of key areas of knowledge. These include imaging physics and anatomy and a wide spectrum of disease processes with associated imaging features, all essential for professionals and trainees working in radiology today. The number of radiologists actively engaged in high-quality research remains small, despite the rapid advances being made in imaging technology and the professional modules allow development in the key domains of research, leadership and teaching.

Who is it for?

The Clinical Radiology course has been specifically designed in collaboration with the Health Education Kent, Surrey and Sussex School of Radiology to provide advanced professional education for trainees in clinical radiology.

Key areas of study

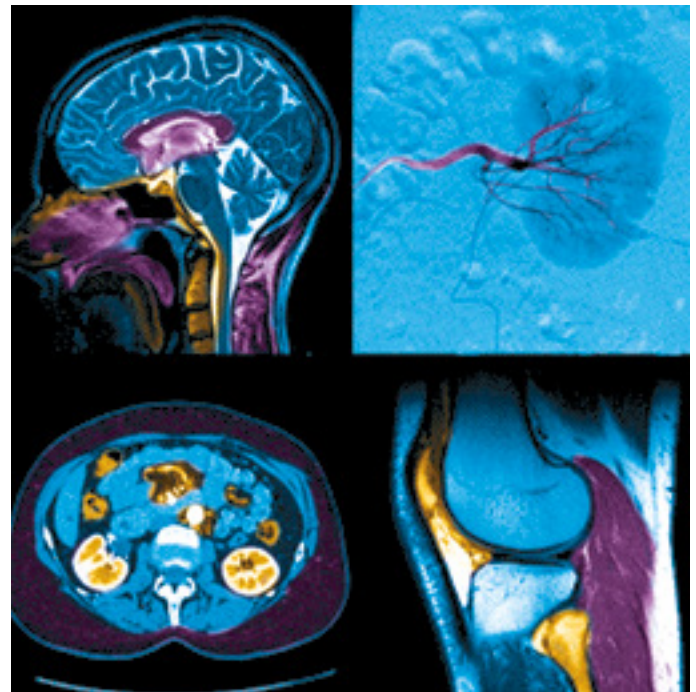
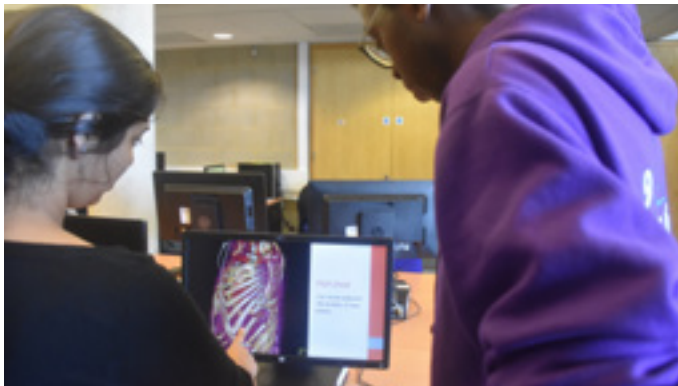
- Imaging physics and anatomy
- Musculoskeletal and neurological imaging
- Oncological imaging
- Research methods and critical appraisal
- Communication, learning and teaching in health and social care
- Leadership and change management in clinical services

What are the benefits?

This course aims to produce high-quality clinical radiology consultants, capable of meeting the challenges of this dynamic and rapidly evolving specialty and equipped with a wide range of invaluable clinical and professional knowledge and skills.

“Delivered through a series of interesting and engaging lectures, this MSc course has provided a thorough foundation in the basic concepts underlying clinical radiology. This has enhanced my knowledge and understanding of the specialty, and greatly supported my professional practice as a trainee radiologist.”

Dr Frances Sheehan
MSc Clinical Radiology student





MSc • PGDip • PGCert

Open to

UK • EU • International applicants

Start date

September 2019

Mode of study

Full-time: 1 year

Part-time: 3 years

Course location

• University of Brighton, Falmer

Course Principal

Professor Sube Banerjee

Course Leader

Dr Naji Tabet

Entry requirements

A degree and evidence of a capacity to study at Masters level with a substantial interest and/or experience in an area of health or social care.

or:

Evidence of a capacity to study at Masters level and at least two years' work experience in an environment related to dementia care (including lived experience).

or:

Completion of at least three years' basic medical science at a UK medical school (having gained at least 360 credits) with a guaranteed place to continue medical studies on completion of the MSc.

For international students a minimum IELTS score of 7.0 is required.

About this course

Dementia is a growing problem globally. This course comprises a set of educational initiatives which enable healthcare professionals to improve the quality of life of dementia patients by building expertise in generating and delivering better care. The comprehensive, holistic, theoretical and practical framework for understanding dementia enables a broad understanding of the impact on the individual and society. Clinical knowledge is blended with developing skills in communication for health and social care, research and leadership learning.

Who is it for?

The course is aimed at a wide range of professionals who are in a position to deliver improvements to the health and care of people with dementia. This includes nurses, doctors, psychologists, occupational therapists and managers and staff in nursing and residential homes.

Key areas of study

- Understanding dementia
- Assessment and treatment of dementia
- Psychological and social perspectives of dementia
- Research methods and critical appraisal
- Leadership and change management in clinical services
- Quality, safety and service improvement in clinical services
- Communication and learning in health and social care

What are the benefits?

Students will be empowered to deliver significant improvements in the quality of services provided. Successful completion of the course will provide specialised knowledge and expertise which will be invaluable in improving the prospect of employment in the field and will enhance the likelihood of career progression.



“This course has enabled me to gain an up-to-date understanding of what dementia is and the latest diagnostic approaches and treatments while stretching my thinking and helping me to remember that it is real people who are facing these difficulties.”

Dr Andrew Risbridger
MSc Dementia Studies student





PGCert

Open to

UK • EU applicants

Start date

September 2019

Mode of study

Part-time: 2 years

Course location

- University of Brighton, Falmer

Course Principal

Dr David Lipscomb

Course Leader

Dr Chris Sargeant

Entry requirements

This course is open to post-registration doctors and qualified practitioners with two years' relevant clinical experience in any profession allied to medicine.

About this course

The course delivers advanced professional education in diabetes for people working in primary care. Uniquely, it enhances both clinical knowledge of diabetes and current best practice in its diagnosis and management in a primary care setting, with the option to study commissioning and service development or evidence-based care for people with diabetes.

Who is it for?

The PGCert Diabetes in Primary Care course meets the professional development needs of a wide range of practitioners working in primary care, including general practitioners, practice nurses, community nurses, podiatrists and pharmacists.

Continuing Professional Development

Diabetes Practice in Primary Care, the core clinical module, can be taken as a stand-alone module as part of continuing professional development.

bsms.ac.uk/postgraduate/cpd

Key areas of study

- Complications of diabetes and their management
- Epidemiology
- Lifestyle interventions and up-to-date treatment options
- Self-management and the patient perspective
- Insulin management, therapeutics and monitoring
- Evidence-based practice in diabetes care
- Quality, safety and service improvement in clinical services
- Leadership and change management in clinical services

What are the benefits?

Professionals who provide care and support in the community for people with diabetes will gain an accessible and achievable postgraduate qualification. Practitioners will gain clinical and professional knowledge which will enhance their ability to practise, commission and promote state-of-the-art, evidence-based care.



“This specialist course enables health professionals to increase their knowledge of diabetes, its complications and management within the primary care setting, and enhances professional skills for the long-term benefit of improved patient care.”

Jillian Gower

Lead Practice Nurse,
High Weald Lewes Havens
Clinical Commissioning Group





MSc • PGDip • PGCert

Open to

UK • EU • International applicants

Start date

September 2019

Mode of study

Full-time: 1 year

Part-time: 2 years

Course location

• University of Sussex, Falmer

Course Principal

Professor Melanie Newport

Course Leader

Dr Anne Gatuguta

Entry requirements

A first or upper second-class undergraduate honours degree or equivalent in any global health-related subject (eg, development studies, anthropology, nursing, political sciences, geography, psychology, biomedical sciences, etc) or the successful completion of at least three years' basic medical science at a UK medical school (having gained at least 360 credits). Relevant global health experience is desirable but not essential.

For international students an IELTS score of 7 or above is required, with no less than 6.5 in each section.

About this course

The course brings together experts from the health sciences, pharmaceutical sciences, development studies, anthropology, economics and political sciences among others in order to deliver a stimulating and vibrant programme. We combine traditional didactic teaching with dynamic and interactive methods, using case studies alongside evidence and insights from the various disciplines to facilitate students' critical understanding of current global health issues, their complex determinants and their potential solutions.

Who is it for?

The course is suitable for anyone interested in global health who would like to take an inter, multi and cross-disciplinary approach to health and ill health. It develops students' understanding of the complex determinants of health in a globalised world and their potential solutions in order to help them contribute to the improvement of health equity and social justice worldwide.

Key areas of study

- Determinants of health and ill-health in a globalised world
- Global burden and management of disease and injury
- Access to medicines
- Neglected tropical diseases (NTDs)
- Health, poverty and development
- Global mental health
- Emerging infectious diseases and antibiotic resistance
- Sexuality, fertility and reproductive rights
- Conflict and violence
- Research practice in global contexts

What are the benefits?

Graduates will have the skills to work as global health practitioners, policy makers, consultants or researchers within national and international health and development agencies. They will have a sound understanding of the complex global health problems, their potential management strategies at different levels and the research approaches used to foster change. Previous graduates have gone into a range of careers, including working for international non-governmental organisations, Public Health England or pursuing fully funded PhDs.



“I always knew that I wanted to work in the development or humanitarian sectors and my Masters at BSMS made it possible for me to shift my career to start working on what I really enjoy.”

Marta Fernandez-Arias
Spanish Red Cross



MSc • PGDip • PGCert

Open to

UK • EU • International applicants

Start date

September 2019

Mode of study

Full-time: 1 year

Part-time: 2 years

Course location

- University of Sussex, Falmer
- University of Brighton, Falmer

Course Leader

Dr Sarah Marshall

Entry requirements

A first or upper second-class undergraduate honours degree in a relevant subject or equivalent.

For international students an IELTS score of 7 or above is required, with no less than 6.5 in each section.

About this course

The course develops students' understanding of how pharmacy can impact global health. Students are provided with a foundation in the complex determinants of health and the global burden and management of disease. The curriculum then focuses on the twin strands of pharmaceuticals and pharmacists, and their role in improving global health, with a particular emphasis on addressing health inequities. The course brings together experts from many disciplines to deliver a vibrant and stimulating programme.

Who is it for?

The Global Pharmacy course is suitable for anyone interested in taking a multidisciplinary approach to the relationship between pharmacy and global health.

This course is particularly relevant for pharmacists, those working in the pharmaceutical industry and pharmaceutical policy makers, as well as others interested in how global health and pharmacy intersect.

Key areas of study

- Social determinants of health and ill health
- Global burden and management of disease
- Access to good quality medicines
- Affordability of medicines
- Supply chain management
- Rational use of medicines
- The role of the pharmaceutical industry in global health
- Pharmacy and global health
- Pharmacy and humanitarian responses
- Research practice in global contexts

What are the benefits?

This course equips students to apply their specialist knowledge and skills to make a unique contribution to improving global health through pharmacy. It has a particular focus on overcoming health inequities: the avoidable differences in health globally. Graduates will have the skills to work as global pharmacy practitioners, policy makers, consultants or researchers, with international health and development agencies or in global health-related areas of the pharmaceutical industry.



“This module has not only taught me a lot about the complexity and importance of access to medicines, but has given me the chance to hear from and interact with some inspirational people working in the field. It has been truly engaging and eye-opening.”

Jennifer Hockey

Access to Good Quality Medicines module student





MSc • PGDip • PGCert

Open to

UK • EU • International applicants

Start date

September 2019

Mode of study

Full-time: 1 year

Part-time: 3 years

Course location

- University of Sussex, Falmer
- University of Brighton, Falmer

Course Leader

Ms Breda Flaherty

Entry requirements

Applicants will normally have clinical, managerial or leadership experience and/ or be educated to degree level. Students are normally in practice in the health and social care field. Full-time students, or students not in healthcare practice, will be identified and supported through the tutorial process.

or:

Successful completion of at least three years' basic medical science at a UK medical school (having gained at least 360 credits) with a guaranteed place to continue medical studies on completion of the MSc.

For international students a minimum IELTS score of 7.0 is required.

About this course

With an innovative blend of leadership theory, contemporary healthcare policy and active application to practice, we equip clinicians, leaders, commissioners and managers to develop their knowledge and understanding of healthcare leadership. Uniquely, we focus on clinical expertise and clinical contexts in depth, alongside research and implementing change in practice.

Who is it for?

Our multidisciplinary approach brings clinicians, leaders, commissioners and managers together from all parts of the health and care system, offering a rich learning environment to build links with colleagues from other professions and services.

Key areas of study

- Leadership and change management in clinical services
- Commissioning for quality care
- Quality, safety and service improvement in clinical services
- Principles and practice of public health
- Research methods and critical appraisal
- Economics of health and health-related behaviour

What are the benefits?

We have been offering in-depth academic study of healthcare leadership and commissioning at BSMS over the past 10 years. Our graduates will apply their range of specialist skills to real healthcare challenges. They will conduct research and enquiry into challenges to the dominant 20th century models of healthcare and shape the changes to healthcare for the 21st century.



“The course helped me to make sense of many experiences I had in the workplace by grounding theories and ideas to practice and government policy. It has had a very positive impact on my career.”

Matthew White

Deputy Director, Development and Partnerships,
Sussex Community NHS Foundation Trust





MSc • PGDip • PGCert

Open to

UK • EU • International applicants

Start date

- September 2019
- February 2020

Mode of study

Full-time: 1 year
Part-time: 3-5 years

Course location

- University of Brighton, Falmer
- University of Sussex, Falmer

Course Principal

Professor Kevin Davies

Course Leader

Dr Ursula Davies

Entry requirements

This course is open to medical trainees who have completed a primary medical qualification and MRCP Part 1. These requirements may be relaxed under special circumstances for applicants with substantial clinical experience (please enquire prior to application).

For international students a minimum IELTS score of 7.0 is required.

Bursaries may be available, please check the course web page for more details.

About this course

Run in partnership with educators, commissioners and practitioners from throughout the region, the course has support from Health Education Kent, Surrey, and Sussex (HEKSS). It provides a rounded education in internal medicine, including current advances in medical sciences and their application in the clinical arena. Students will gain a detailed understanding of core research methodologies, critical evaluation, evidence-based approaches and the pathophysiology of conditions of clinical interest.

Who is it for?

The course is designed for medical trainees interested in professional and academic development in the field of internal medicine.

The course is also for those looking to build their portfolio and strengthen contacts for the future.

Key areas of study

Clinical modules

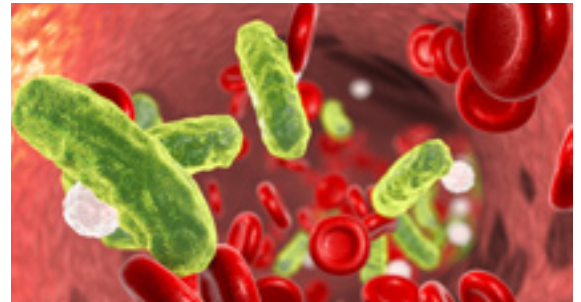
- Intensive medicine
- Auto-immunity
- Infectious diseases
- Frailty and elderly medicine

Professional modules

- Research methods and critical appraisal
- Leadership and change management in clinical services
- Communication, learning and teaching in health and social care

What are the benefits?

The course provides increased scientific awareness of pathophysiological processes and will prepare medical trainees for advanced practice and senior clinical posts. It will train students to be high-achieving consultants and clinical leaders by combining clinical knowledge with professional development learning in the three key domains of leadership; communication, learning and teaching; and the development of research and publishing skills. It will also prepare students who wish to engage in substantive research projects leading to MD or PhD.



“We are delighted to provide this unique opportunity for advanced education in Internal Medicine. Our postgraduate courses promote in-depth understanding of disease processes across a broad range of medical specialties, including their pathophysiology and latest research data. They ensure high-level diagnostic skills and expert management techniques for forward-looking consultant physicians of the future.”

Dr Ursula Davies
Course Leader



PGCert

Open to

UK • EU applicants

Start date

September 2019

Mode of study

Part-time: 1 year

Course location

- University of Brighton, Falmer

Course Leader

Dr Jim Price

Entry requirements

The PGCert course is open to post-registration doctors, nurses, midwives and other health practitioners who contribute to the education of medical students and/or doctors. A first degree is not essential but evidence of ability to study at Masters level and a current teaching commitment are desirable.

or:

For intercalating MSc medical students, successful completion of at least three years' basic medical science at a UK medical school (having gained at least 360 credits) with a guaranteed place to continue medical studies on completion of the MSc.

The course forms one of two validated routes for entry to the PGDip or MSc in Clinical Education, the other being via the PGCert in Simulation in Clinical Practice.

About this course

The course aims to promote knowledge of learning and teaching theories in a medical and clinical context and to facilitate a reflective awareness of the student's own teaching and learning practice, ensuring that the teacher is also a learner.

The Academy of Medical Educators (AoME) has fully accredited the course and successful completion now entitles participants to membership of the Academy.

For further information, visit the AoME website: medicaleducators.org

Who is it for?

The PGCert in Medical Education is aimed at professionals from medical and other clinical backgrounds who are involved in teaching or proposing to teach medical students, doctors or other health professionals, and who wish to develop their teaching, learning and communication skills.

Key areas of study

- Professional identity as a teacher
- Learning and teaching in medical education
- Pedagogical practice in medical education
- Advanced communication skills and strategies in medical education
- Medical education research

What are the benefits?

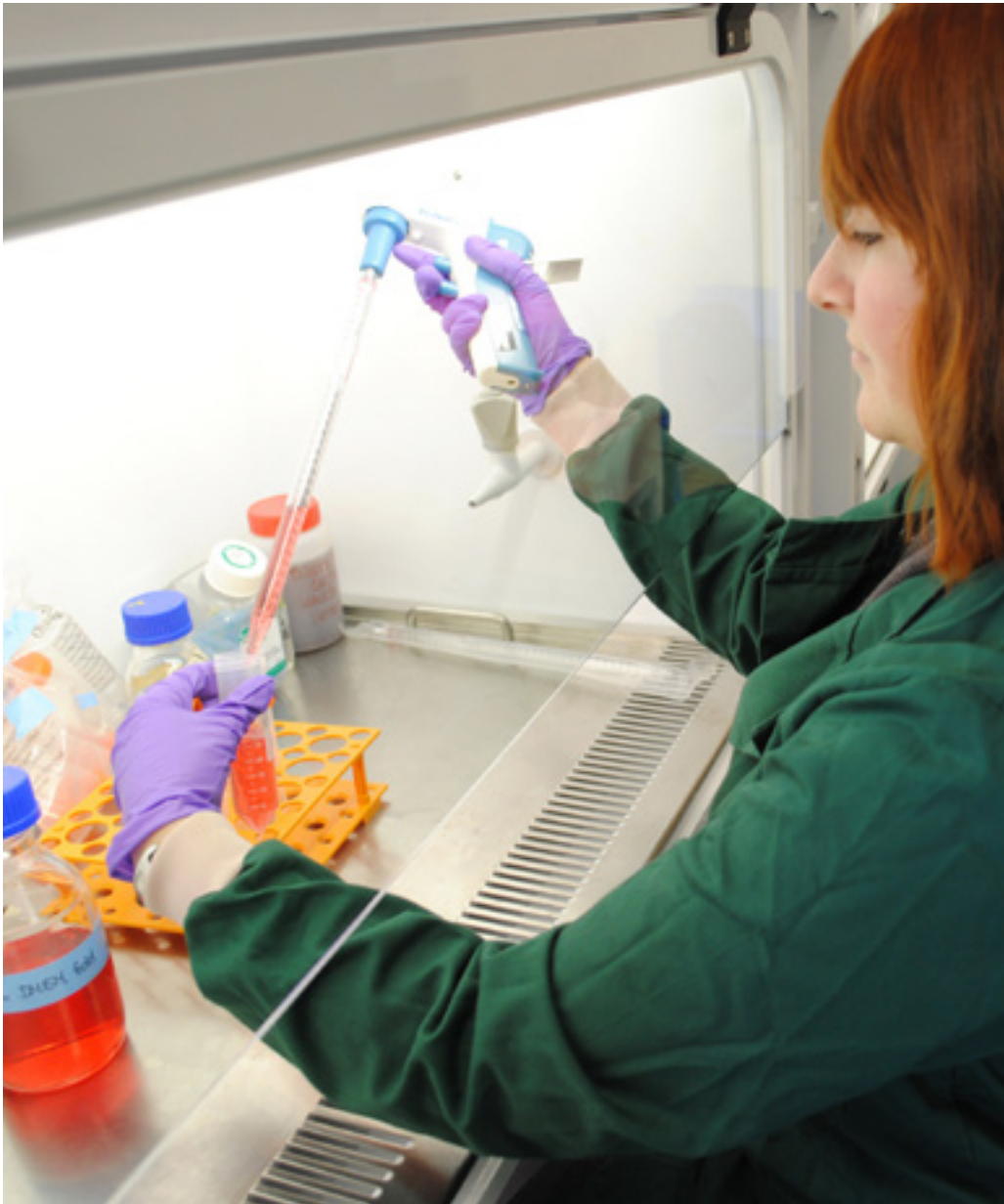
Graduates will gain a firm base and accredited professional standards to underpin their role as medical and clinical educators. It will help you develop academic skills in 'social science' writing, as well as an in-depth reflective educational portfolio to give you a strong foundation as both a scholar and practitioner in clinical education. This forms an ideal springboard for further qualifications in Medical or Clinical Education such as a Diploma or Master's degree, Fellowship of the Higher Education Academy or Membership / Fellowship of the Academy of Medical Educators.

"The Medical Education PGCert was inspirational, foundational and hands on. It has provided me with a greater emphasis in my teaching on learning objectives, more focus on lesson planning and the confidence to experiment with different teaching media."

Dr Carl Fernandes

Medical Education graduate





MRes • PGCert

Open to

UK • EU • International applicants

Start date

September 2019

Mode of study

Full-time: 1-3 years

Part-time: 3-5 years

Course location

- University of Brighton, Falmer

Course Leader

Dr Trevor Welland

Entry requirements

A first degree plus a stated desire to develop as a researcher.

or:

Evidence of involvement in an ongoing research programme, award of a research grant or employer support for a research project.

or:

Successful completion of at least three years' basic medical science at a UK medical school (having gained at least 360 credits) with a guaranteed place to continue medical studies on completion of the MSc.

About this course

The course has been designed to develop and promote independent research skills in future principal investigators. Education and training is provided through classroom teaching, workshops, self-directed learning and the development and application of research skills. Students engage with a supervised research project and are encouraged to develop their autonomy in research project design, management, governance and reporting. All students are expected to give presentations and publish their research work.

Who is it for?

The MRes is aimed primarily at BSMS Academic Clinical Fellows, intercalating students and NHS trainees in medicine and surgery. Applications are welcome from NHS staff in a setting in which medical research is part of their day-to-day activity. Independently funded applicants may also apply. Individuals who do not wish to pursue the full MRes course may consider the PGCert with the potential to transfer to the MRes later should they wish.

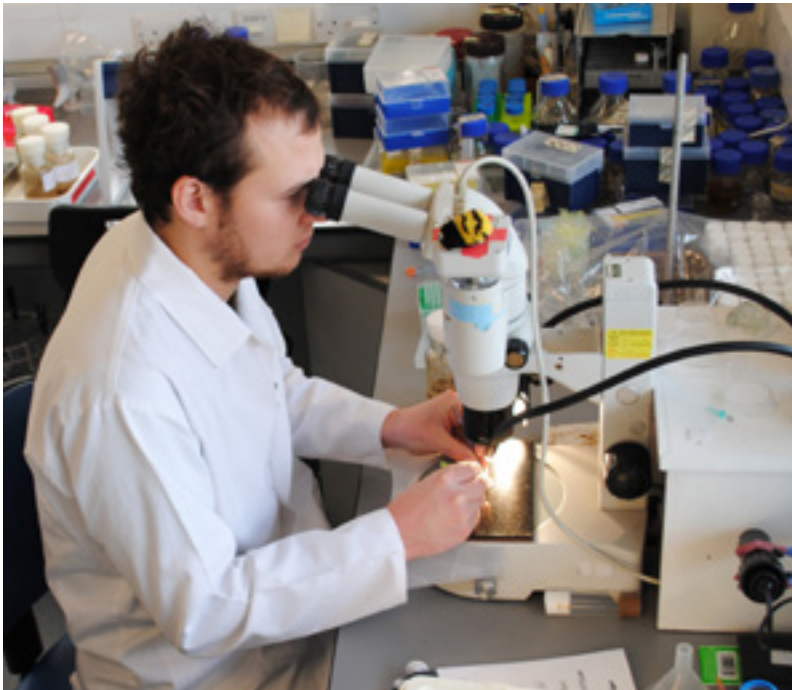
Key areas of study

This course is research focused and core and optional modules explore:

- Research methods and critical appraisal of research literature
- Essential statistics for health and medical research
- Evidence-based practice (this module will be delivered as a distance learning module from September 2019 subject to approval)
- Clinical trials management
- Advanced research skills (eg, interview and focus groups; systematic reviews; statistical analysis; qualitative data analysis)
- Epidemiology

What are the benefits?

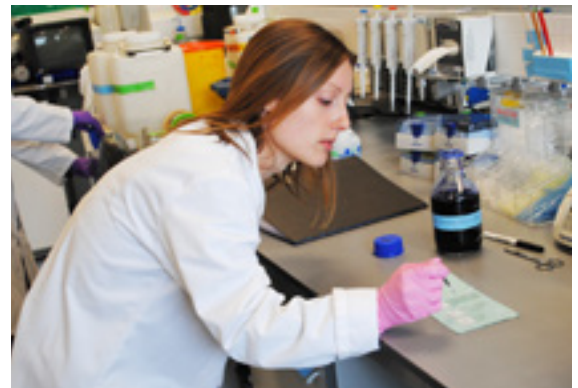
The course can be a useful stepping stone to PhD level study and collaborative or independent research in the future. Course graduates will be research literate, research skilled and equipped to be research active in their careers. It is expected that they will present their studies at conferences and publish research papers in appropriate professional and academic journals.



“The modules in the MRes in Medical Research have definitely helped me develop as an academic doctor. I feel more confident with statistics, and more able to write scientific literature. The course leader has been extremely friendly and helpful as well.”

Dr Dev Katarey

Medical Research MRes graduate





MSc • PGDip • PGCert

Open to

UK • EU • International applicants

Start date

September 2019

Mode of study

Full-time: 1 year
Part-time: 3 years

Course location

- University of Brighton, Falmer
- University of Sussex, Falmer

Course Principal

Professor Somnath Mukhopadhyay

Course Leader

Dr Kamal Patel

Deputy Course Leader

Poothirikovil Venugopalan

Entry requirements

Applicants should have a degree in medicine or any of the allied health professions (such as nursing, dietetics, physiotherapy, occupational therapy).

Applicants should be working in paediatrics and child health and/or interested in pursuing a career in this specialty.

For international students a minimum IELTS score of 7.0 is required.

Bursaries may be available, please check the course web page for more details.

About this course

The course provides a detailed understanding of core research methodologies, critical evaluation, evidence-based approaches and the scientific basis of childhood disease. A key feature is its multi-professional nature, which is considered essential for professional practice in paediatrics and child health. The uniqueness of this course is its emphasis not only on the clinical aspects of paediatric care but also on the provision of such care, which will be embedded within the clinical modules.

Who is it for?

This multidisciplinary course is designed for all allied health professionals with a career interest in paediatrics and child health. It is suitable for specialty trainee doctors in paediatrics and other healthcare professionals working with children and young people.

Key areas of study

- Acute and emergency paediatrics
- Management of long-term conditions in children
- Developmental paediatrics
- Research methods and critical appraisal
- Communication, learning and teaching in health and social care
- Leadership and change management in clinical services

What are the benefits?

The course will train students to be high-achieving consultants and clinical leaders of the future. This is achieved by blending clinical knowledge with learning in the three key multi-professional domains of leadership, communication and learning and teaching, along with the stimulation of innovative thinking and the development of research and publishing skills.



“The course is empowering me to accomplish my career prospects in terms of both clinical knowledge and professional confidence. There has been a very clear structure and supportive guidance throughout and I’ve felt very inspired and positively driven by all my professors and assisting staff.”

Elisa Camponeschi

Physiotherapist and MSc student





MSc

Open to

UK • EU applicants

Start date

September 2019

Mode of study

Full-time: 2 years

Course location

- University of Brighton, Falmer
- University of Sussex, Falmer

Course Leader

Dr Richard Howell

Entry requirements

Applicants must have attained a first or upper second-class degree in life sciences or another health-related undergraduate degree within the past five years.

Registered health professionals with more than five years' clinical experience may apply in exceptional circumstances with appropriate references and a personal statement, but must have GCSE Maths and English Grade A* – B or equivalent.

For EU students an IELTS score of 7 or above is required in addition to the academic requirements.

About this course

At a time of significant change in the NHS, physician associates (PAs) are playing an increasingly valuable role supporting doctors in the diagnosis and management of patients. The PA is a relatively new role in the NHS, working alongside doctors in hospitals and GP surgeries. This innovative course, developed in conjunction with Health Education England Kent, Surrey and Sussex, provides students with the knowledge, professional and clinical skills to work as a PA and includes significant time in local clinical placements and simulation facilities.

Who is it for?

The physician associate role is a fast-growing role in the UK, and involves clinical medicine supervised by experienced doctors. This full-time course will suit applicants who have a strong grounding in bioscience and/or healthcare in their first degree, but would like to develop a clinical role in medicine.

Key areas of study

- Integrated curriculum with clinical placements in primary care throughout Year 1
- Anatomy delivered using prosection
- Access to learning materials from the undergraduate medical course
- Simulation-based learning throughout the curriculum
- Clinical reasoning strategies for diagnosis in case-based learning
- Rotational attachments in local NHS trusts in clinical specialties throughout Year 2

What are the benefits?

Qualification with the MSc in Physician Associate Studies and successful completion of the national examination will allow graduates to work in a variety of healthcare settings including general medicine, paediatrics and community settings. Local trusts have already developed workforce plans for PA posts in Sussex. As the PA role has been identified as a key emergent profession within the NHS, it is envisaged a large number of job vacancies will become available locally and nationally in the coming years.



“The varied and interactive teaching style at BSMS, including being able to view prosections in anatomy and developing clinical practice techniques, really solidified our learning and means that I learned a lot really quickly. The faculty were really supportive and the teaching was fantastic; the placements have been really accommodating and it was a really positive experience overall.”

Katie Morgan-Jones
Physician Associate graduate





MSc • PGDip • PGCert

Open to

UK • EU applicants

Start dates

PGCert: September 2019,
January and April 2020
MSc/PGDip: September 2019

Mode of study

Part-time: 5 years maximum

Course locations

- Sussex Education Centre,
Mill View Hospital, Hove
- University of Brighton, Falmer

Course Leader

Dr Richard Whale

Entry requirements

Applicants must have a relevant undergraduate qualification and will be expected to demonstrate an ability to study at Masters level.

Trainees entering the Health Education Kent Surrey and Sussex (HEKSS) psychiatry core training programme will be automatically eligible.

Applications from non-medical staff who have been working for a minimum of two years in mental health-related posts will also be considered. Please note that the MSc Psychiatry will not qualify non-medical staff to practise as a psychiatrist.

Bursaries may be available, please check the course web page for more details.

About this course

The MSc Psychiatry course is run in collaboration with Health Education Kent Surrey and Sussex (HEKSS). The first year follows the Royal College of Psychiatrists' core knowledge curriculum, with an opportunity to exit with a PGCert. The second year incorporates development of wider clinical professional skills in leadership and teaching. The third year provides a structured research opportunity within the mental health field, working towards completion of a dissertation.

Who is it for?

The course has been specifically designed for academically orientated psychiatry trainees and other allied professionals with relevant background experience.

Key areas of study

- Core principles of psychiatry
- Psychopathology
- Behavioural science
- Psychotherapy
- Biological sciences in psychiatry
- Research methods and critical appraisal
- Leadership and change management in clinical services
- Communication, learning and teaching in health and social care

What are the benefits?

The first year prepares students for Paper A of the Royal College of Psychiatrists' membership examination. A higher academic qualification enhances evidence of experience for competitive interviews and offers entry to an academic career.



“The course is delivered in a dynamic and engaging way, complementing and extending the knowledge base needed to pass membership exams. BSMS offers excellent teaching, workshops, guidance and support and has allowed me to undertake a dissertation directly relevant to my professional career goals.”

Dr Marissa Wilson

Sussex Partnership NHS Foundation Trust





MSc • PGDip • PGCert

Open to

UK • EU • International applicants

Start date

September 2019

Mode of study

Full-time: 1 year

Part-time: 3 years

Course location

• University of Brighton, Falmer

Course Leader

Dr Priya Paudyal

Entry requirements

A first or upper second-class undergraduate honours degree or equivalent in any public health-related subject.

or:

At least five years' experience in an environment related to public health. Applicants must demonstrate a capacity to study at Masters level.

or:

Successful completion of at least three years' basic medical science at a UK medical school (having gained at least 360 credits) with a guaranteed place to continue medical studies on completion of the MSc.

International applicants who meet the above entry criteria and have IELTS (minimum score of 7.0 with no less than 6.5 in each section and no less than 7 in writing) are welcome to apply.

About this course

This established Masters programme has been running successfully for over 15 years in a strong interdisciplinary and inter-professional learning environment. The course reflects recent advances in public health medicine, innovations in learning technology and the need for diverse methods of student assessment. Course content includes the techniques required to undertake epidemiological studies, approaches to environmental impact on health matters, mechanisms of partnership working to achieve health gain and wider issues of the health of the population.

Who is it for?

The course is aimed at graduates who intend to practise in public health or related fields, and professionals who are in a position to deliver improvements in the health of communities and populations. Participants typically include public health managers, infection control nurses, intercalating medical students, screening specialists, doctors and other graduates. Students are encouraged to share their personal public health knowledge within the academic environment.

Key areas of study

- Principles and practice of public health
- Epidemiology
- Research methods and critical appraisal
- Essential statistics in health and medical care
- Health protection
- Global public health
- Health economics
- Nutrition in public health

What are the benefits?

The course is designed for full-time or part-time study to meet the educational needs of those delivering and managing the public health and/or environmental agenda. Teaching sessions are delivered by academics and practitioners who are active in the field. Course participants are empowered to develop public health practice which has a positive impact on their community. The course prepares students to pursue careers related to public health in a range of national and international public and non-governmental organisations.



“It was definitely the best decision to study the Public Health MSc at BSMS. The course opened great opportunities for me! I got a new job in the field of public health in Austria. I now work in health promotion and research at a very well-known university.”

Madlene Movia
Public Health graduate





PGCert

Open to

UK • EU applicants

Start date

September 2019

Mode of study

Part-time: 1 year

Course location

• University of Brighton, Falmer

Course Leader

Dr Wesley Scott-Smith

Entry requirements

Applications are welcome from trainers in medicine and nursing, and from other healthcare specialties. Current employment in a clinical role which includes teaching or developing simulation-based education is essential.

The course forms one of two validated routes for entry to the PGDip or MSc in Clinical Education, the other being via the PGCert in Medical Education.

Prior study at level 6 and experience in delivery of simulation is also a requirement.

About this course

The course is purpose built to meet the clinical and professional development needs of the NHS workforce, including potential educators in simulation-based learning in the South East. It allows participants to advance their skills and knowledge in a mix of theoretical and practical sessions including group work activities, debriefing and feedback, the exploration of technical issues, human factors and fidelity. Students are expected to develop a portfolio of teaching experience which reflects the educational principles of the modules and demonstrates competence in teaching.

Who is it for?

The course is suitable for those involved in simulation-based education in the workplace or as part of their teaching. We encourage applications from all domains of practice as the modules are delivered through a multidisciplinary approach.

Key areas of study

- Multidisciplinary approach to learning
- The evolution, variety and importance of human factors in healthcare practice
- Knowledge and skills required to design, develop and facilitate simulation training
- Debriefing skills required to aid learners and subsequent reflection and development
- Simulation-based medical education principles
- Transformative learning
- Role of extrinsic and intrinsic feedback
- Producing a portfolio of teaching experience

What are the benefits?

This PGCert will provide specialist knowledge useful for any career in the field of healthcare that involves the support of learning and assessment in practice. In addition, the course will enable you to develop the skills of critical analysis, critical reflection and the evaluation of research evidence commensurate with postgraduate study. Delegates who graduate from the PGCert will take with them the specialist knowledge and confidence to design simulation scenarios and facilitate debriefing sessions.



“Overall this module was absolutely amazing. The teaching was outstanding, the format very well thought through, and I feel like I have learned a great deal. And for the first time I am sad that this is Friday and the module is over.”

Dr Thomas Kurka

F2 doctor, Brighton and Sussex University Hospitals Trust





MSc • PGDip • PGCert

Open to

UK • EU • International applicants

Start date

September 2019

Mode of study

Full-time: 1 year

Part-time: 3 years

Course locations

- University of Brighton, Falmer
- University of Sussex, Falmer

Course Principal

Professor Malcolm Reed

Course Leader

Ms Anouk van der Avoirt

Entry requirements

Applicants should have an undergraduate medical degree, and should be able to demonstrate an ability to study at this level. It is expected that students will be in clinical practice throughout the programme.

Applications will also be considered from other professionals in appropriate clinical practice (theatre and surgical practitioners and physician associates).

For international students a minimum IELTS score of 7.0 is required.

Bursaries may be available, please check the course web page for more details.

About this course

This course is designed to provide and prepare trainee surgeons for advanced posts and practice. It is modular and comprises six one-week teaching blocks. The course is not designed to duplicate the preparation for the Royal College exams; instead it will cover topics not routinely covered by standard training or included in mainstream textbooks. The emphasis is on acquiring knowledge and skills which will prepare students for advanced practice in surgery.

Who is it for?

Designed for surgical trainees, the course is also suitable for other practitioners wanting a more in-depth understanding of the field of surgery and all that it encompasses.

Key areas of study

Three clinical modules:

- Advanced professional issues in surgery
- Perioperative care in surgery
- Principles and practice of simulation in surgery

Three professional modules:

- Research methods and critical appraisal
- Leadership and change management in clinical services
- Communication, learning and teaching in health and social care

Research-based dissertation

What are the benefits?

This course will support the professional who is looking to become a better-rounded surgical expert. It will marry theory with practical skills in a variety of subjects to produce a thorough learning experience. The professional modules encompass the three crucial areas of research, leadership and education to equip the surgical leaders of tomorrow with the knowledge and skills necessary for their jobs.



“We are excited about the development of this new course at BSMS. We have designed it to go beyond normal training opportunities to provide insights and learning which you can’t get from textbooks. We want to promote surgery as an advanced clinical and academic discipline within future healthcare.”

Ms Anouk van der Avoirt
Course Leader



Research programme

At BSMS postgraduate research ranges from basic science through clinical projects to medical ethics and social science. Our overlapping research groupings and research environment provide postgraduate students with opportunities for interdisciplinary interactions.

In some projects, supervisors with a background in fundamental science are working together with clinicians to provide an exciting and productive research environment. Other projects are enhanced by the input of ethics research into research on human genetics or disease.

The neighbouring Schools of Life Sciences at the University of Sussex and Pharmacy and Biomolecular Sciences at the University of Brighton ensure a rich collaborative environment offering a wide range of seminars. Some of our students are part of larger research centres of the two universities, such as Sussex Neuroscience, the Brighton Centre for Regenerative Medicine and Devices and Centre for Stress and Age-Related Disease.

Career opportunities

A PhD at BSMS aims to develop the necessary skills to work as a researcher, applying cutting-edge technologies to subjects related to health and biomedical science. Our PhD and MD graduates have progressed into clinical academic careers, are working in biomedical science companies or continue to work in academic science.

Specialist facilities

BSMS's state-of-the-art Medical Research Building on the Sussex campus provides an outstanding resource for around 50 medical research scientists. Laboratory facilities include molecular biology equipment, tissue culture labs, advanced microscopy equipment and flow cytometry.

Faculty research interests

- Cancer
- Cell and developmental biology
- Elderly care and stroke
- Global health
- Imaging
- Infection and immunology
- Medical education
- Medical ethics
- Digital health
- Neuroscience, psychiatry and dementia studies
- Paediatrics
- Primary care and health services
- Rheumatology

“My PhD at BSMS allowed me to engage in top-level research and to publish four papers that helped me secure a postdoctoral position at the University of Oxford.”

Dr Ilaria Cervellini
Postdoctoral
Research Fellow

Current PhD thesis titles

- Exploring the role of the inflammasome in inflammation and joint damage associated with rheumatoid arthritis
- Pathophysiology and prognosis of septic and dengue shock in Vietnam
- Post-transcriptional regulation of small open reading frame (smORF) transcripts and bioactive peptides in development and disease
- Does simulated experience of caring for a dying patient and their family improve the confidence and preparedness of medical students?
- Diagnosing and monitoring diabetes in people living with HIV
- Hidden symptoms in multiple sclerosis: a closer look into cognitive fatigue, cognitive dysfunction and the relationship between them, using neuropsychological testing and fMRI
- Interoception and preventative intervention for anxiety in adults with autism



Our teachers

Professor Sube Banerjee

Course Principal
Dementia Studies



Sube Banerjee is Professor of Dementia, Deputy Dean at BSMS and Director of its Centre for Dementia Studies. Clinically he works as an old age

psychiatrist with a particular interest in memory assessment. In national policy development and implementation he served as the UK Department of Health's senior professional advisor on dementia, co-leading the development of its National Dementia Strategy.

Dr Chris Carey

Course Leader
Anaesthesia and Perioperative Medicine



Chris Carey is a Consultant Anaesthetist at BSMS. He acquired the FRCA and CCST and joined Brighton and Sussex University Hospitals NHS Trust as

a Neuroanaesthetist. He has been Head of the Health Education Kent, Surrey and Sussex School of Anaesthesia since 2010, during which time the school has expanded significantly to include additional higher specialty training posts.

Professor Kevin Davies

Course Principal
Internal Medicine



Kevin Davies is a Consultant Rheumatologist and Head of the Department of Clinical and Experimental Medicine at BSMS. In addition he is

Special Project Advisor for Europe for the Royal College of Physicians and is actively engaged in developing closer links with European medicine, both clinically and academically. Kevin helped establish BSMS in 2002.

Dr Ursula Davies

Course Leader
Internal Medicine



Ursula Davies is a Consultant Physician and Rheumatologist at Surrey and Sussex NHS Trust and Honorary Clinical Senior Lecturer at BSMS. She is

Training Programme Director in Internal Medicine for Health Education England (London and South East) and a member of the Royal College of Physicians Internal Medicine Specialty Advisory Committee. Ursula also has a Masters in Postgraduate Medical Education.

Breda Flaherty

Course Leader
Healthcare Leadership and Commissioning



Breda Flaherty is a faculty lead for the Aspiring Chief Executives Programme at the NHS Leadership Academy, and a former Leadership Associate

at the Kings Fund. Breda focuses on developing leaders in clinical and care settings and changing organisations. The BSMS Healthcare Leadership and Commissioning course attracts multi-disciplinary staff from across the NHS in clinical, managerial, commissioning and service improvement roles.

Dr Anne Gatuguta

Course Leader
Global Health



Anne Gatuguta has a background in clinical medicine and worked in the private and public health sectors in Kenya for over 10 years. Prior to joining BSMS,

she completed a PhD in Public Health and Policy at the London School of Hygiene & Tropical Medicine. Anne has also been involved in teaching undergraduate and postgraduate courses in epidemiology, research and public health, as well as conducting healthcare research.

Our teachers

Caroline Hopper

Senior Lecturer

Healthcare Leadership and Commissioning



As an Executive Director in the NHS for over 12 years, Caroline has extensive experience in the fields of health policy, strategy and service improvement and systems change. In teaching at BSMS, Caroline is particularly interested in supporting postgraduate students to integrate their academic learning with their professional roles in order to develop themselves and their service. She also works as a consultant in health and social care.

Dr Richard Howell

Course Leader

Physician Associate Studies



Richard Howell was previously a Consultant Obstetrician and Gynaecologist with extensive undergraduate teaching experience as a senior lecturer. He has been integral in developing the Physician Associate course at BSMS over the last three years and is now leading it for an interim period, hoping to continue the academic success of the first cohort.

Jackie Knight

Course Leader

Clinical Professional Studies



Jackie Knight has a combined experience of healthcare provision and academic management. She has clinical specialisation in mental health and psychiatric practice. Jackie's areas of expertise include healthcare leadership and management; change management and workforce development; medical and healthcare education; work-based and experiential learning; service improvement and professional development.

Joanna Lawrence

Senior Lecturer

Simulation in Clinical Practice



Joanna Lawrence is a Senior Lecturer and Fellow of the Higher Education Academy. She is a Registered Nurse and a Master of Business Administration (MBA). Joanna has a background specialising in intensive care, resuscitation, trauma and accident and emergency. She has spent many years teaching simulation and is the Module Lead for Debriefing and Feedback.

Dr Muzaffar A Malik

Senior Lecturer

Essential Statistics



Muzaffar Malik has worked in clinical research and public health for over two decades in roles with the NHS, the World Health Organisation, the medical industry and academia. Muzaffar has been lecturing on medical statistics and research methods since 2006. His areas of expertise are applied medical statistics and clinical epidemiology. Muzaffar also has a special interest in clinical research related to the new European medical device regulations.

Dr Sarah Marshall

Course Leader

Global Pharmacy



Sarah Marshall has worked in community and hospital pharmacy, clinical trials, and academia in the Middle East, the Netherlands and the UK. Her PhD looked at developing new medicines for malaria, from plant remedies. Other interests include access to medicines and the role of pharmacy in humanitarian responses.

Our teachers

Professor Somnath Mukhopadhyay

Course Principal
Paediatrics and Child Health



Somnath Mukhopadhyay is Chair of Paediatrics at the Royal Alexandra Children's Hospital. His principal interest lies in exploring new, more

personalised therapeutic approaches to improve care in children with asthma and allergy, and the progress of his research has been widely reported by the national and international press.

Dr Sean O'Nunain

Course Leader
Cardiology



Sean O'Nunain is a Consultant Cardiologist/Electrophysiologist at the Sussex Cardiac Centre, Brighton. His specialist interests are in ablation

for the treatment of supraventricular and ventricular arrhythmias and complex devices including implantable cardioverter defibrillators and cardiac resynchronisation therapy.

Dr Kamal Patel

Course Leader
Paediatrics and Child Health



Kamal Patel works full time as a Consultant Paediatrician and is the Clinical Lead for Level 2 Paediatric Critical Care; he developed the unit's expertise in paediatric

acute non-invasive ventilation, leading to two national Innovation Safety awards in 2016 and the Kent Surrey and Sussex Leadership award in Quality and Safety in 2017. Kamal is an enthusiast for holistic care, which has led him to develop expertise in several complementary and alternative medicine approaches.

Dr Priya Paudyal

Course Leader
Public Health



Priya Paudyal previously worked as a researcher at Peninsula Medical School and the University of Aberdeen. Her current research interests are in

the field of migration and respiratory disease. She is particularly interested in the health and wellbeing of migrant workers and their left behind families. She has methodological expertise in evidence synthesis and has published several systematic reviews in the areas of asthma, cancer and complementary therapies.

Dr Jim Price

Course Leader
Medical Education; Clinical Education



Jim Price is a Principal Lecturer in Medical and Clinical Education and a part-time GP. He has been involved in Masters level teaching since 2001 and has

a broad portfolio of teaching expertise. His areas of interest include complex systems theories in medical education, learning and teaching theory, faculty development, postgraduate supervision and technology-enhanced learning.

Dr Chris Sargeant

Course Leader
Diabetes in Primary Care



Chris Sargeant is a GP Director of Accessible Restorative Community Health and Senior Lecturer at BSMS. He works clinically as a GP in Inclusion Health

in Brighton. His interest is in improving the health of marginalised populations.

Our teachers

Dr Wesley Scott-Smith

Course Leader
Simulation in Clinical Practice



Wesley Scott-Smith has worked in postgraduate roles at the Universities of Brighton and Surrey since 2001, and was previously Clinical Practice Lead in Phase 1 of the undergraduate medical course at BSMS for six years. He has also been responsible for developing and implementing two courses in the Department of Medical Education: Simulation in Clinical Practice, and the Masters degree in Physician Associate Studies.

Dr Naji Tabet

Course Leader
Dementia Studies



Naji Tabet's clinical and academic interests and expertise are in the field of dementia. He is the Clinical Lead for the Dementia Research Unit at Sussex Partnership NHS Foundation Trust, which is dedicated to advancing the treatment of Alzheimer's disease and other dementia disorders. Dr Tabet is also researching non-pharmacological interventions for Alzheimer's disease.

Dr Phil Thompson

Course Leader
Clinical Radiology



Phil Thompson has been a Consultant General and Interventional Radiologist at Brighton and Sussex University Hospitals NHS Trust since 2004, with particular interests in urological and gastrointestinal imaging and intervention. He has been Head of the Health Education Kent, Surrey and Sussex School of Radiology since 2014, having previously been Sussex Radiology Training Programme Director.

Ms Anouk van der Avoirt

Course Leader
Surgical Studies



Anouk van der Avoirt has always had a particular interest in teaching and training, she has been the local Programme Director for Higher Surgical Trainees for many years, and was Training Programme Director for Core Surgical Training in KSS for seven years. She is responsible for the undergraduate paediatric surgical curriculum at BSMS. Anouk also runs the Care of the Critically Ill Surgical Patient (CCrip) course in Brighton, to which her Masters students will have priority access.

Dr Richard Whale

Course Leader
Psychiatry



Richard Whale is a Principal Lecturer and Consultant Psychiatrist at Sussex Partnership NHS Foundation Trust. He medically leads the Early Intervention for Psychosis service and has expertise in psychopharmacology. His research currently focuses on the neuropharmacology of mood disorder and psychosis, exploring influences on clinical outcome and illness vulnerability models.

Dr Trevor Welland

Course Leader
Medical Research



Trevor Welland is a Sociologist, and has taught research methods at UCL Medical School and at the Institute of Psychiatry, KCL. At BSMS Trevor teaches research methods to postgraduate students. He also co-ordinates dissertations and supervises PhD students. Trevor's research and publications profile are predominantly linked to his interest in occupational socialisation.



How to apply

All applications for BSMS postgraduate taught courses are managed by the University of Brighton.

STEP 1

Apply online for your chosen course via the 'Apply now' link on the BSMS course web pages.

bsms.ac.uk/postgraduate/apply-now

After submitting your application, the University of Brighton will send you an acknowledgement email. You will also receive an email inviting you to activate your University of Brighton IT user account, which will allow you to track and manage your application online.

STEP 2

Your application will be reviewed by an admissions panel. Shortlisted applicants are normally interviewed.

If successful you will receive an offer of a place on the course.

STEP 3

Once you have firmly accepted your offer you will receive further information about enrolment and induction.

For all enquiries except

Global Health and Global Pharmacy:

- +44 (0) 1273 641782
- enquiries@brighton.ac.uk
- bsms.ac.uk/postgraduate

For Global Health and Global Pharmacy enquiries:

- +44 (0) 1273 876670
- globalhealthteaching@bsms.ac.uk

For research degrees:

- researchdegrees@bsms.ac.uk

For general information on studying at the Universities of Brighton or Sussex, please visit brighton.ac.uk and sussex.ac.uk

View this prospectus as a pdf at bsms.ac.uk/postgraduate

Course fees

The fees listed below are the overall costs for full-time courses taken in the academic year 2019-2020. Where courses are taken part-time over more than one academic year, fees are usually charged pro-rata for the modules taken during each academic year. There may be a small increase in fees each year in line with inflation.

UK / EU applicants (all courses except those stated below)

MSc	PGDip	PGCert
£8,028	£5,352	£2,676

Internal Medicine (UK/EU)

MSc	PGDip	PGCert
£9,072	£6,048	£3,024

Surgical Studies (UK/EU)

MSc	PGDip	PGCert
£10,602	£7,068	£3,534

Medical Research (UK/EU)

MSc	PGCert
£6,426	£2,142

MSc Physician Associate Studies (UK/EU)

£9,250 per annum

International applicants (all courses)

MSc	PGDip	PGCert
£15,012	£10,008	£5,004



..... Rail
—— Road

How to find us

See bsms.ac.uk for directions

Distance from BSMS:

- ▶ **Central Brighton** – 4 miles
15 minute drive
10 minute train
- ▶ **Central London (Victoria)** – 53 miles
1 hour 30 minute drive
1 hour 20 minute train
- ▶ **Gatwick Airport** – 28 miles
35 minute drive
45 minute train
- ▶ **Heathrow Airport** – 64 miles
1 hour 10 minute drive
2 hour train

Imagery supplied by Polly Basak; Matt Bemment, Communications Team, BSMS; James Lewis, Clinical Media Centre, Brighton and Sussex University Hospitals NHS Trust; Stuart Robinson, Publications and Branding Team, University of Sussex; and Andrew Weekes.

Designed by James Adams.

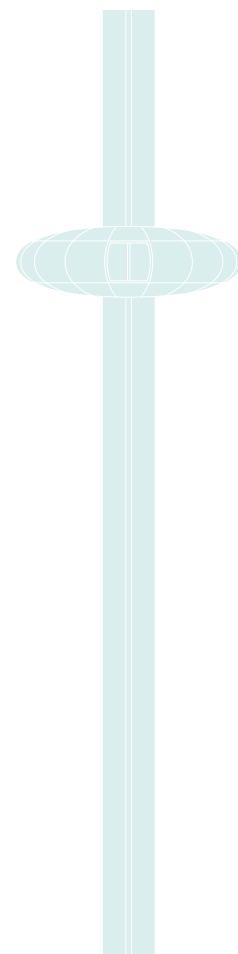
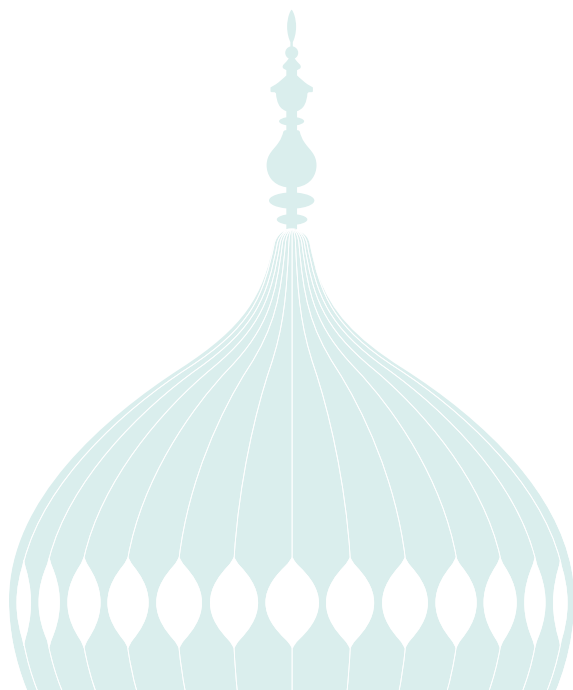
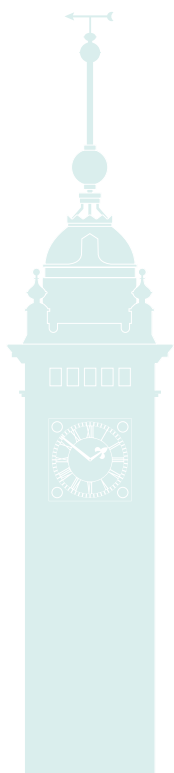
BSMS makes every effort to ensure the accuracy of all information in this prospectus. However, at the time of going to press some finer points of curriculum planning and other school procedures remain under development.

Any further developments will be shown on the BSMS website:

bsms.ac.uk/postgraduate

Both the paper mill and the printer are certified to the environmental management standard ISO 14001.

© January 2019



Postgraduate Courses 2019-20

Anaesthesia and Perioperative Medicine
Cardiology
Clinical Education
Clinical Professional Studies
Clinical Radiology
Dementia Studies
Diabetes in Primary Care
Global Health
Global Pharmacy
Healthcare Leadership and Commissioning
Internal Medicine
Medical Education
Medical Research
Paediatrics and Child Health
Physician Associate Studies
Psychiatry
Public Health
Simulation in Clinical Practice
Surgical Studies

bsms.ac.uk/postgraduate

