



THE UNIVERSITY
of EDINBURGH

The Edinburgh Experience

Postgraduate Guide 2019 entry

Influencing the world since 1583



“Edinburgh isn’t so much a city, more
a way of life ... I doubt I’ll ever tire of
exploring Edinburgh, on foot or in print.”

Ian Rankin
Best-selling author and alumnus

Welcome to the University of Edinburgh

- 03** About the University
- 04** The Edinburgh experience
- 05** Global connections
- 06** Career development
- 11** Supporting you and your studies
- 12** Join a global student community
- 14** Fees, funding and costs
- 16** City life
- 21** Visit us
- 22** Accommodation
- 25** Choosing your programme
- 26** Online programmes
- 28** How to apply
- 30** Index of masters programmes
- 37** Our Colleges and research areas
- 40** Contact us
- 41** Visit us



Old College dome and 'the golden boy'
in the Central Area.

TOP 50

We are consistently ranked as one of the top 50 universities in the world. We're 18th in the 2019 QS World University Rankings.

4TH

We're ranked fourth in the UK for research power, based on the 2014 Research Excellence Framework.*

24

We are associated with 24 Nobel Prize winners.

TOP 100

We are ranked in the top 10 in the UK and in the top 100 in the world for the employability of our graduates.§

13TH

We're ranked 13th in the world's most international universities.±
Since 2010, we have taught students from 82 per cent of the world's countries.

ONLINE LEADER

Edinburgh is one of the largest providers of online postgraduate programmes in the UK

Come and join us

The University of Edinburgh has been changing the world for more than 400 years.

Our famous alumni include historical greats, such as Joseph Black, who discovered carbon dioxide, and philosopher David Hume, whose ideas laid the foundations of contemporary thought, as well as 21st-century luminaries such as *Harry Potter* creator J K Rowling and the UK's most successful Olympic gold medal winner, Sir Chris Hoy.

The work we do at the University is constantly expanding the depth of human knowledge and improving the lives of ordinary people. Research conducted here led to the discovery of chloroform anaesthesia, the Higgs boson particle and in-vitro fertilisation. Our academics have advanced the public understanding of how our behaviours affect ageing, protected forest ecosystems, and helped bring broadband to remote communities. Our students make a difference while they are studying here through their outreach work in local schools and communities. As graduates, our alumni go on to make positive impacts on the world using the skills, experience and knowledge they gain at the University.

The University has long enjoyed a spirit of innovation, and continues to do so today. From addressing climate change to seeking cures for cancer, our researchers are at the forefront of the research that will influence tomorrow's world.

Influencing the world since 1583

* Times Higher Education, Overall Ranking of Institutions

§ Times Higher Education, Global Employability University Ranking 2017

± Times Higher Education: The World's Most International Universities 2017

The Edinburgh experience

The University of Edinburgh is one of the largest and most diverse universities in the UK. We host more than 39,000 students studying across more than 150 academic disciplines.

Whether you choose to study on campus or online, your postgraduate experience at Edinburgh will be supported and enhanced by the wealth of resources and opportunities that a university of our size can offer.

Quality teaching and research

All our postgraduates benefit from our inspiring research culture. The academics involved in your teaching and learning are leaders in their fields and although the emphasis at postgraduate level is very much on independent study, support from our teaching staff is always on hand. The University is committed to delivering high-quality, innovative teaching. The latest report from the Quality Assurance Agency awarded us the highest rating possible for the quality of the student learning experience.

Outstanding facilities

During the past five years we have invested £80 million to maintain and enhance our teaching and learning spaces and we're investing more than £1 billion in the next few years. You will have access to a wealth of study resources:

- 10 libraries, including the third largest academic library in Europe, four million printed volumes and an extensive digital collection;
- state-of-the-art laboratories and world-leading analytical facilities, including a 1.5km deep subsurface biology laboratory, an Eco Diamond HK36 small aircraft for measuring trace gases at 3,000 metres, and the FloWave Ocean Energy Research Facility for simulating wave and tidal current interactions – the largest of its kind in Europe – to name but a few;
- the University's Centre for Research Collections, one of the most important resources of its kind in the world, encompassing rare books, Shakespeare first editions, oriental manuscripts, architectural drawings, paintings, sculpture, photography and much, much more;
- Europe's foremost clinical research imaging facility alongside the world-leading Scottish Centre for Regenerative Medicine, and one of the UK's largest state-of-the-art teaching hospitals;

- the University's Talbot Rice Gallery and the Tent Gallery at Edinburgh College of Art host a range of contemporary art exhibitions throughout the year;
- the University Collection of Historical Musical Instruments, one of the world's most important collections of musical heritage spanning 500 years and 5,000 objects;
- the University's Anatomy Museum, which first opened in 1884 and hosts a wealth of unique anatomical objects.

Industry links and innovation

Edinburgh was one of the first UK universities to develop commercial links with industry, government and the professions. Our commercialisation office, Edinburgh Innovations (EI), has developed the promotion and commercialisation of the University's research excellence, helping launch 417 new companies since 1967. EI can help you take your first step to market, whether it's through collaborative research, licensing technology or providing consultancy services.

Social scene

We have more than 260 student societies covering sport, music, drama and the arts. Several international and multicultural societies offer support settling in and help you meet new friends. You'll enjoy life in a vibrant, historic city of world-famous cultural festivals, full of great bars, clubs and restaurants, all with the mountains and beaches of Scotland on your doorstep: www.eusa.ed.ac.uk/societies

Sporting excellence

In 2016/17 we were ranked third in the UK for sport by British Universities and Colleges Sport (BUCS). We offer 64 sports clubs, covering everything from fencing to skydiving, horse riding to ice hockey. Our world-class facilities are regularly used by visiting international teams and we host major events such as the BUCS Home Nations tournament in April 2017. We're proud to have produced Olympians including Sir Chris Hoy and Katherine Grainger, who both developed their talents at Edinburgh and continue to support our young athletes.

Global connections

Our ambitious global engagement plan aims to provide world-class experiences for our students and ensures that the teaching and research we deliver offers global benefits.

Worldwide links

We collaborate with a host of world-leading institutions in fields as diverse as e-science, engineering, life and medical sciences, and arts and culture. Our partners include:

- California Institute of Technology
- University of Amsterdam
- University of Copenhagen
- University of Sydney
- University of Toronto
- National University of Singapore
- Fudan University
- Peking University
- Zhejiang University
- University of Delhi
- Pontificia Universidad Católica de Chile.

We have five Regional Centres in Latin America, Southeast Asia, South Asia, North America and East Asia, which support engagement with students, academics and alumni.

We're also a member of the global research network Universitas 21, and the European networks COIMBRA group, UNICA and LERU.

Global Academies

Our Global Academies in health, development, environment, food security, and justice bring together research expertise from the University community and beyond to tackle global challenges such as climate change, poverty, the spread of epidemics and cross-border injustices. Global Academies are a gateway to online and on-campus interdisciplinary postgraduate programmes aimed at anyone interested in addressing the major global issues of our time.

www.ed.ac.uk/global-academies



Career development

Ranked in the top 10 in the UK and in the top 100 in the world for the employability of our graduates*, the University is an excellent choice for a postgraduate education with prospects.

We're committed to helping you to develop skills and attributes that will enhance your ability to compete in the job market, to progress your career, and to achieve your full potential within the global community. In addition to the provision of dedicated support through our award-winning Careers Service, we broker strategic partnerships between academics, industry specialists and other institutions, to enhance the development of your graduate attributes and to embed employability in our curricula.

Careers Service

Our Careers Service provides advice and support whatever your plans for the future. We run workshops throughout the year for our postgraduate students as well as specific sessions for our international students. We have a team dedicated to developing our already strong links with employers from all industry sectors, from the world's top recruiters to small local enterprises. We offer lots of opportunities for students to meet employers on campus and online.

www.ed.ac.uk/careers/postgrad

Work-based projects

Many of our Schools will offer you support in undertaking a work-based project, in partnership with an employer, as the basis of your masters dissertation.

www.makingthemostofmasters.ac.uk

* *Times Higher Education*, Global Employability University Ranking 2017

Employ.ed for PhDs

We support the provision of part-time, on-campus internships, which provide project-based, paid employment to our current PhD students. These are advertised on our careers portal, MyCareerHub. www.ed.ac.uk/careers/employed-internships

Alumni

We provide opportunities for students to draw on the knowledge and experience of our alumni through lectures, workshops and panel discussions. We will shortly be launching Platform One, a new online meeting place where students, alumni, staff and volunteers can discuss ideas, plans and possibilities. www.ed.ac.uk/alumni

Backing bright ideas

LAUNCH.ed is the University's award-winning programme for student entrepreneurs. Each year, LAUNCH.ed works with hundreds of students to help them start new businesses. Successful start-ups, assisted by LAUNCH.ed, include FanDuel, a pioneering fantasy sports league with more than six million registered users, Two Big Ears, a virtual reality software developer recently acquired by Facebook, and Krotos, developers of a sound effects programme that has been used by Hollywood studios on blockbusters such as Avengers: Age of Ultron and Jungle Book: www.launch.ed.ac.uk

Public engagement opportunities

Our Institute for Academic Development (IAD) hosts the Beltane Public Engagement Network, so if you're interested in promoting your research to wider audiences you will have access to resources, events and funding opportunities to help you develop the necessary skills and experience to do so. www.beltanenetwork.org

Doctorate Extension Scheme

We support the Doctorate Extension Scheme. This means international students completing a PhD or other doctorate-level qualification on a Tier 4 visa may be eligible to apply to stay in the UK for employment for an additional 12 months with extended support from the University as your sponsor. The scheme allows you more time to find work with a Tier 2 employer, gain practical experience or set up as an entrepreneur. www.ed.ac.uk/immigration/tier4-des

“Postgraduates come to us with a broader outlook and more rounded and developed skills, both in their chosen discipline and more generally in terms of their communication skills and self-confidence. We value their proven aptitude for self-driven learning and further study, important requirements for anyone embarking on the demanding actuarial professional exams.”

HR department, Hyman Robertson LLP, Pensions, benefits and risk consultancy firm

My experience: using the Careers Service

Petra Yu

MSc International Business
& Emerging Markets graduate
from Austria

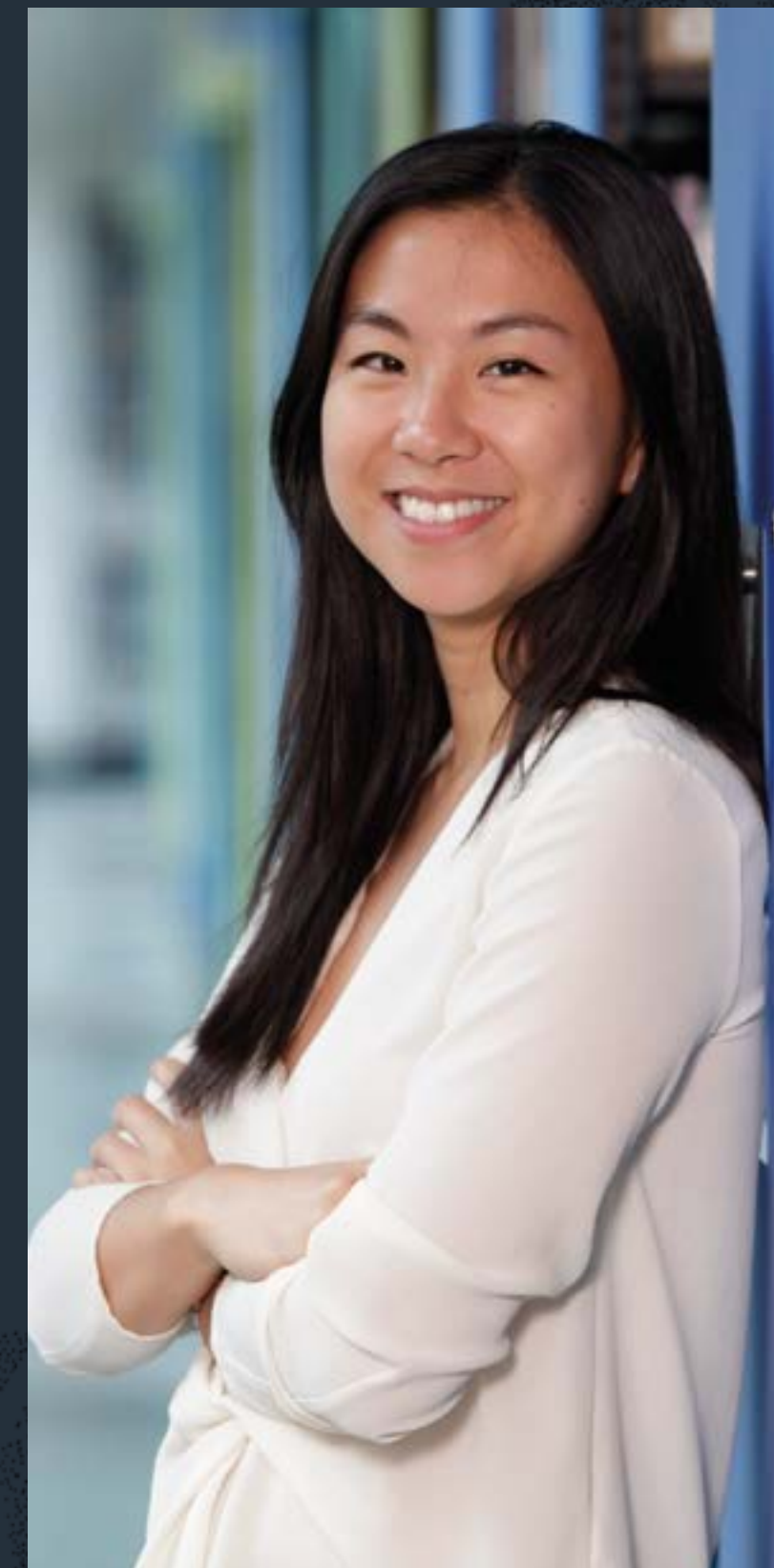
Secured a job before graduation



One of the most valuable things I was able to take advantage of was the University's network of top employers. With its good reputation and high ranking for the employability of students, world-leading companies from various industries attended, ranging from Jaguar Land Rover, to EY, Barclays, Sky and more. The University offered many opportunities to network with employers to prepare for life after graduation. These included presentations and workshops by companies such as Deloitte, Goldman Sachs, McKinsey and others that provided an insight into the application process and the values recruiters are looking for.

I am aware how valuable a strong network is, which I believe the University equipped me with. Not only does it have strong ties with notable companies but the alumni network is also diverse and close-knit.

By the time I started to apply for jobs, what I found of most help were the mock interviews and CV-screenings. The feedback I was given enhanced my performance and provided me with useful pointers and tips. As such, the Careers Service provided me with a competitive edge. I am really grateful to have had this strong support for my career development and have taken advantage of it fully.



My experience: skills training

Louise K. Gramstrup

PhD Religious Studies, from Denmark

Louise believes support from the University's Institute for Academic Development will help her stand out in the competitive job market.



My PhD journey has been significantly enhanced by the IAD's courses on professional development. These are useful whether you are looking to pursue an academic career or make use of transferable skills. For instance, time management workshops help you achieve a work-life balance while courses on communication skills provide practical strategies for conference presentations. Attending courses about academic writing skills significantly enhanced my thesis. Other workshops changed my approach to collaboration and outreach by making me more assertive, self-aware, and knowledgeable about alternative mindsets.

Besides supporting me as a researcher, the IAD has also developed my teaching. I have completed a professional teaching qualification recognised by the Higher Education Academy. I believe that this qualification together with my CPD training will make me stand out in a competitive job market because I can demonstrate skills and a commitment to professional development as a result.

Finally, getting the chance to network with other researchers from different disciplines is a valuable side-benefit of attending IAD courses, including the Local GRADSchool that brings together final-year PhD candidates for three days to engage in professional and personal development activities. I have made close friends in this way with whom to share the ups and downs of PhD life.



My experience: skills training

Harsh Vaidya

PhD Stem Cell Biology, MRC Scottish Centre for Regenerative Medicine graduate, from India

Skills training offered by the Institute for Academic Development helped Harsh prepare for a career in business.



There's a lot of help available at Edinburgh if someone wants to pursue a career in industry or start their own business.

I attended the Institute's LEADER Summer School in Denmark. It was really helpful because there were sessions on entrepreneurship and business, personality development, leadership and communication, and intellectual property and copyright. We also learned how to communicate our research to the public.

I think it's always important to have additional skills because when you go for a job it's not only your theoretical knowledge or how you work in the lab that counts, but how you communicate with others, or how you work in a team, so all this training really helps.

I think I'm pretty competitive when applying for jobs because employers also look for what you do alongside your qualification, and I can demonstrate skills from these workshops and the other things I've done here.



Supporting you and your studies

The University provides a wide range of support services to cater for your academic and personal needs.

Institute for Academic Development

All postgraduate students can benefit from our Institute for Academic Development (IAD), which provides information, events and courses to develop the skills you will need throughout your studies and in the future. IAD events also offer the perfect opportunity to meet and network with other postgraduates from across the University.

Further information is available online: www.ed.ac.uk/iad/postgraduates

For taught postgraduates, IAD provides a popular study-related and transferable skills support programme. It is designed to help you settle into postgraduate life, succeed during your studies and move confidently to the next stage of your career. We offer on-campus and online workshops and one-to-one study skills consultations, plus online advice and learning materials. Workshops and learning resources cover key topics tailored to different academic stages, including pre-arrival sessions; getting started with your studies; critical reading, writing and thinking; managing your exams; and planning for and writing up your dissertation.

IAD also provides a comprehensive programme of transferable-skills training, resources and support for researchers completing a doctorate. The workshop programme is designed to help you successfully prepare for the various milestones of your PhD, from getting started with your research, to writing up and preparing for the viva, as well as developing personal and professional skills that can be transferred to your future employment. Workshops cover topics such as writing skills, reference management tools, statistics, preparing for conferences, delivering presentations, time and project management, and personal development. IAD also offers online resources and planning tools to help get your research started, plus support for tutoring and demonstrating, and research public engagement and communication.

Personal and academic support

Every taught postgraduate student has a Personal Tutor and every research student has a supervisor – a member of staff who can offer guidance and support.

Health and wellbeing

We aim to provide an environment that enables and supports you to flourish; to promote good mental and physical health among our students; and to ensure you are well supported if you experience mental health difficulties during your studies.

Student Counselling Service

Our Counselling Service offers you a professional and confidential service: www.ed.ac.uk/student-counselling

The Advice Place

Our drop-in advice centre, run by Edinburgh University Students' Association, offers free, confidential and independent advice on a range of issues: www.eusa.ed.ac.uk/advice

Student Disability Service

Students with a disability are encouraged to discuss any specific support needs with one of our Disability Advisers as early as possible during the application process. Our service works to create an environment that helps disabled students participate fully in university life: www.ed.ac.uk/student-disability-service

The University Health Centre

All students should register with a doctor. Students from EU countries are eligible for healthcare under the National Health Service as long as they have a valid student card. International students and their dependents may also be eligible to access NHS medical care: www.health-service.ed.ac.uk

The Chaplaincy Centre

Our Chaplaincy is for students of all faiths and of none. We cover a wide variety of beliefs, including humanism and all major world religions. All are welcome: www.ed.ac.uk/chaplaincy

Childcare

The University's Arcadia Nursery, was designed by award-winning architects around the concept of free play, and is catered to Children's Food Trust and Food for the Brain standards.

Encompassing indoor and outdoor play, the nursery has places for 0-5-year-olds and is open to students, staff and other local parents: www.arcadianursery.co.uk

Global students

Edinburgh University Students' Association also provides support for our international community of students, by tapping into the wealth of language skills and cultural knowledge of our vibrant global campus community, to offer services such as peer proofreading, free taster language courses (more than 70 languages to choose from), and language networking events: www.eusa.ed.ac.uk/global

English Language Education

Our English Language Education service offers free academic English tuition, self-study materials and advice for international students seeking support. You can take extra classes and an exam in the summer in Edinburgh before your programme starts, or take additional classes after starting your studies: www.ed.ac.uk/english-language-teaching

Centre for Open Learning

Our Centre for Open Learning offers around 1,000 evening, weekend and part-time courses each year. Full-time students at the University are entitled to a significant discount on course fees: www.ed.ac.uk/short-courses

Join a global student community

As a welcoming global university, we offer our EU and international students a range of additional specialist services designed to make your move to Edinburgh as smooth and seamless as possible.

Edinburgh Global

Edinburgh Global is the central contact point for non-UK students. It can provide you with the information and support you may need to settle in, and also runs events and activities designed to support your experiences as a student.
www.ed.ac.uk/international

Support begins early

You can contact Edinburgh Global for advice at any time during or after the application process. We run online advice sessions and drop-ins, or you're equally welcome to visit us! Our Regional Managers regularly make trips abroad to attend education exhibitions and to hold a range of events for prospective applicants as well as pre-departure briefings for our offer-holders.

Immigration assistance

Trained Immigration Advisers are available to assist you with visa advice, from the initial stage of applying to study in the UK, through to graduation. We can help with bringing your family to Edinburgh or working during or after your studies.
www.ed.ac.uk/immigration

Your arrival

We offer an airport welcome service before the academic year starts and arrange activities to help you settle in. Once you have received an offer to study at the University you can check online for essential information about joining us.
www.ed.ac.uk/new-students

Staying connected

We organise a series of year-round social events and information sessions. We run a week-long programme of orientation events for new students at Edinburgh, including International Day – an orientation event for non-UK students – and other ongoing induction activities. You can also attend our study-skills event, which introduces and explains the Scottish academic system to new international taught masters students.
www.ed.ac.uk/international/student-life

International Students' Centre

Run completely by student volunteers, our International Students' Centre hosts activities for all our students to meet and socialise. They run a programme of events throughout the year tailored to international students, including subsidised trips around Scotland, social evenings, parties and regular coffee gatherings.
www.ed.ac.uk/global/isc

Meet the locals

Our Go Connect scheme links international students with Edinburgh residents to help you settle into university life, learn more about Scotland and enhance your experience of studying abroad. It's a great opportunity to find out more about Scottish culture.
www.ed.ac.uk/global/go-connect

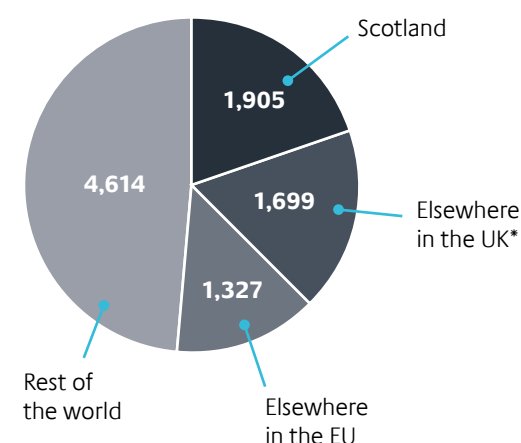
Our community

In January 2018, our postgraduate community included more than 9,500 taught students and almost 5,000 research students from 168 countries around the world.

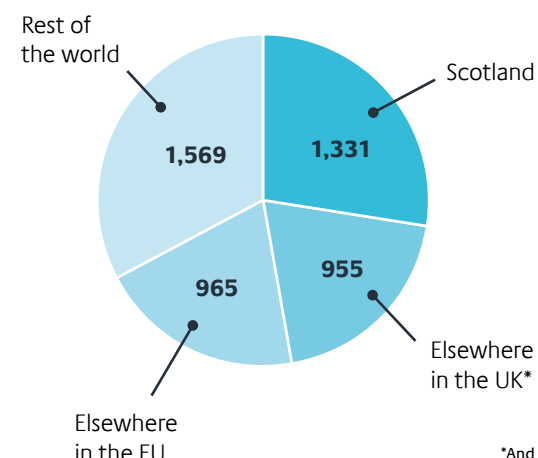


Where our students are from

Taught students



Research students



*And the Channel Islands and Isle of Man.

My experience: making a global impact



Radu Marian

MSc International Business & Emerging Markets graduate from Moldova

Radu used his time at Edinburgh to further his ambitions to make a global impact.



Understanding the bigger picture of the challenges that business and governments face is my life's mission and key to having a fulfilling career. It is also the key for me to have an impact and leave a legacy.

I chose to pursue MSc International Business & Emerging Markets because I believe socially responsible businesses can play a key role in solving global challenges such as poverty eradication and income inequality. The University and the programme helped me understand my mission better and act on my philosophy. I met outstanding like-minded people from all over the world and interacted with their world views, their culture, their challenges and their dreams. I learned how they perceive dialogue, communication and success differently. With many of them, I built lasting friendships. Our consulting projects with real-life companies allowed me to help them expand internationally and understand how such companies build a global outlook.

My experience at the University gave me everything I wanted from a masters experience in the UK – it strengthened my global outlook and my understanding of the bigger picture. Now it's my time to act upon this experience and start having an impact – local and global.



Soufia Bham

MSc Global Health & Public Policy graduate from Mauritius

Soufia developed as a leader and activist, helping improve healthcare access.



I wanted to focus on improving access to sexual and reproductive health services for underserved communities and decided to pursue an MSc in global health and public policy. The guest lectures allowed me to engage in discussions on health and rights with a wide range of experts and activists. This was instrumental in allowing me to connect theoretical aspects of policymaking to real life efforts.

As a MasterCard Foundation scholar, I further benefited from the Edinburgh Award in transformational leadership, during which we reflected what it means to be a leader and put our leadership skills into practice.

My experiences helped me refine my academic interests and develop confidence in my leadership journey and activism. I became aware of the diversity of perspectives and approaches to solving global challenges and was able to focus my efforts to best impact the communities I serve. I feel well equipped to deal with the challenges of a career in policy advocacy and grassroots work on healthcare access.

Fees, funding and costs

Postgraduate study can be a significant financial commitment, but you may be surprised by the range of funding sources available.

To help you pursue your ambitions, we offer academically outstanding candidates a number of postgraduate scholarships and studentships. You can apply for funding once you have received an offer for admission. The University's Scholarships and Student Funding Services can provide guidance on sources of scholarships, loans and other funding opportunities.

University of Edinburgh Graduate Discount Scheme

We offer a 10 per cent discount on postgraduate fees for all alumni who graduated with an undergraduate degree from Edinburgh. www.ed.ac.uk/student-funding/discounts

Scholarships

More information on funding opportunities, including the examples listed below, can be found online: www.ed.ac.uk/student-funding/postgraduate

• Asylum Seeker Tuition Fee Status and Scholarship

Information for applicants seeking asylum from within the United Kingdom, who wish to commence a programme of study at the University in 2019, is available online. This includes our tuition fee rates and scholarship opportunities: www.ed.ac.uk/student-funding/tuition-fees/asylum

• Chevening Scholarships

The Foreign and Commonwealth Office funds a number of Chevening Scholarships for postgraduate study, mainly for one-year taught masters degrees. Full details of these awards can be obtained from your local embassy or high commission. www.chevening.org



You will find up-to-date fee levels for your specific programme online: www.ed.ac.uk/student-funding/tuition-fees/postgraduate

• Commonwealth Scholarships

The Commonwealth Scholarship and Fellowship Plan provides opportunities for students in one Commonwealth country to pursue advanced academic study at masters or MPhil/PhD level in another Commonwealth country. Applications are made to the Commonwealth Scholarship Agency (usually the Ministry of Education) in the applicant's home country. <http://cscuk.dfid.gov.uk>

• Edinburgh Global Research Scholarships

To attract high-quality, overseas research students to the University, each award will cover the difference between the tuition fee for a UK postgraduate and that for an international postgraduate. The awards do not cover maintenance expenses. www.ed.ac.uk/student-funding/global-research

• Enlightenment PhD Scholarships

A number of scholarships open to UK, EU and international PhD students. www.ed.ac.uk/student-funding/development

• Highly Skilled Workforce Scholarships

A number of scholarships are available to UK nationals permanently domiciled in Scotland, and to EU nationals domiciled either on mainland EU or in Scotland, who have been accepted on an eligible full- or part-time masters programme. The scholarships, which are funded by the Scottish Funding Council and subject to annual confirmation, cover the UK/EU tuition fee. At the time of printing, we are awaiting confirmation of these scholarships from the Scottish Government: www.ed.ac.uk/student-funding/sfc-hsw

• The Mastercard Foundation Scholars Program

Ten postgraduate scholarships for applicants who are residents and citizens of a Sub-Saharan African country will be available for eligible masters programmes. The scholarships cover full tuition fees and expenses for accommodation and maintenance. www.ed.ac.uk/student-funding/mastercardfdn

• Principal's Career Development PhD Scholarships

These provide a valuable opportunity for PhD students to undertake training and skills development and offer opportunities in areas such as teaching, public engagement, entrepreneurship, data science, and research. Each award covers the UK tuition fee and a stipend. www.ed.ac.uk/student-funding/development

• Scotland's Saltire Scholarships

A number of scholarships open to students who are citizens permanently and ordinarily resident in Canada, China, India, Pakistan and the USA for one year of masters study: www.ed.ac.uk/student-funding/saltire

Research councils (for UK/EU only)

- Arts and Humanities Research Council (AHRC) www.sgsah.ac.uk/dtp/
- Economic and Social Research Council (ESRC) www.socsciscotland.ac.uk/home
- Biotechnology and Biological Sciences Research Council (BBSRC) www.bbsrc.ac.uk
- Engineering and Physical Sciences Research Council (EPSRC) www.epsrc.ac.uk
- Medical Research Council (MRC) www.mrc.ac.uk
- National Environment Research Council (NERC) www.nerc.ac.uk
- Science and Technology Facilities Council (STFC) www.stfc.ac.uk

UK Government loans

- The Student Awards Agency Scotland offers tuition fee loans for taught diploma and masters programmes which will be paid directly to the University. Full-time students can also apply for a non-income assessed living cost loan. www.saas.gov.uk
- Student Finance England offers postgraduate loans for taught and research masters programmes and also for doctoral degree study. www.gov.uk/student-finance
- Student Finance Wales offers eligible students postgraduate loans for taught and research masters programmes. www.studentfinancewales.co.uk

Funding search

Search our internally and externally funded awards online: www.ed.ac.uk/student-funding/search

International awards: www.ed.ac.uk/student-funding/postgraduate/international

UK/EU awards: www.ed.ac.uk/student-funding/postgraduate/uk-eu

- Student Finance Northern Ireland offers a tuition fee loan for taught and research programmes, at certificate-, diploma-, and masters-level, which will be paid directly to the University. www.studentfinance-ni.co.uk

Online learning

• Edinburgh Global Online Distance Learning Masters Scholarships

Scholarships are available to students undertaking eligible online learning programmes. www.ed.ac.uk/student-funding/e-learning/online-distance

Erasmus+

The Erasmus+ Master Loan helps masters students with their living and tuition costs when studying in an Erasmus+ country other than where they live or where they took their first degree: <https://erasmusplus.org.uk/master-loan>

Tuition fees

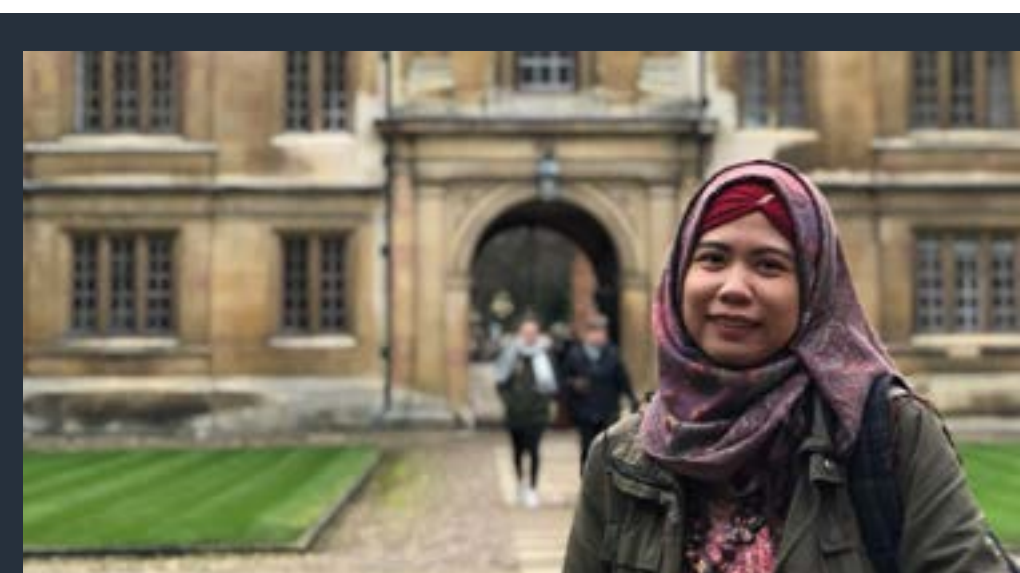
You will find up-to-date fee levels for your specific programme at: www.ed.ac.uk/student-funding/tuition-fees/postgraduate

Please note: International students starting full-time taught programmes of study lasting more than one year will be charged a fixed annual fee. All other students on full- and part-time programmes of study lasting more than one year should be aware that annual tuition fees are subject to revision and are typically increased by approximately five per cent per annum. This annual increase should be taken in to account when you are applying for a programme.

You will find information on other studying and living costs online: www.ed.ac.uk/postgraduate/fees-finance

Living costs

For information on the day-to-day cost of living in Edinburgh, please check our guidance online: www.ed.ac.uk/international/cost-of-living



Lisa Wijayani

MSc Ecological Economics graduate from Indonesia

Lisa received one of the Chevening scholarships, which recognise future global leaders and bring them to the UK to study and gain multicultural experience.



Before coming to the UK, I worked on economic development, emphasising the role of entrepreneurship in Southeast Asia. I became interested in climate change and sustainability issues then set my goal to be an environmental economist. I desire to make a global impact by rendering policy advocacy and initiatives that can tackle environmental problems through economic policy.

The University has equipped me with strong knowledge and broadened my perspective. I have acquired practical knowledge of implementing economic methods to evaluate ecosystem services as well as a vigorous understanding of economic theory to attain sustainability. I will use this to aid my dissertation research, in which I aim to discover potential improvements and provide recommendations for policy makers in Indonesia to further enhance entrepreneurship and strengthen the sustainable economy.

I am fortunate to have received a prestigious scholarship. The University has provided me with good opportunities, often bringing external speakers to give lectures relevant to their field that help me engage with experts beyond the University. The University offers a complete package of educational and professional improvement that I am grateful to be given a chance to seize.

“Edinburgh is one of Europe’s most beautiful cities, draped across a series of rocky hills overlooking the sea.”

Lonely Planet

Edinburgh was rated the UK’s most attractive city to live and work in by a 2018 Royal Mail study.

The temperature in Edinburgh typically averages up to 6°C in the winter and up to 20°C in the summer.

Citylife

The University is at the heart of the city of Edinburgh. Scotland’s inspiring capital is one of Europe’s great cultural hubs and a stimulating place to study.

Regularly voted one of the most desirable places to live in the world, Edinburgh has a great social and cultural life, a busy sporting calendar and a rich history. Edinburgh is well known for its friendly people, its safe, green environment and its stunning, historic architecture. Its compact size makes it easy to get around and wherever you are in the city, you are seldom far from open countryside.

Edinburgh’s location is perfect for adventurers – there are few other places in the world with such diverse and readily accessible opportunities, from snowboarding to surfing. Scotland’s natural beauty, its mountains, lochs and forests, is just a short trip away and the landscape offers one of the longest coastlines for a country of our size, so a visit to the beach is highly recommended.

In the summer months the pace of city life accelerates as Edinburgh’s world-famous annual festivals get under way. The city hosts almost 30 festivals during the year, with the most famous taking part on campus or near to the University. Highlights include:

- Edinburgh International Festival
- Edinburgh Festival Fringe
- Edinburgh Jazz and Blues Festival
- Edinburgh Art Festival
- The Royal Edinburgh Military Tattoo
- Edinburgh International Book Festival
- Edinburgh Mela
- Edinburgh International Film Festival
- Edinburgh International Science Festival
- Edinburgh’s Hogmanay.

The city’s festivals draw almost four million visitors to Edinburgh each year.

Edinburgh’s population is approximately 500,000.

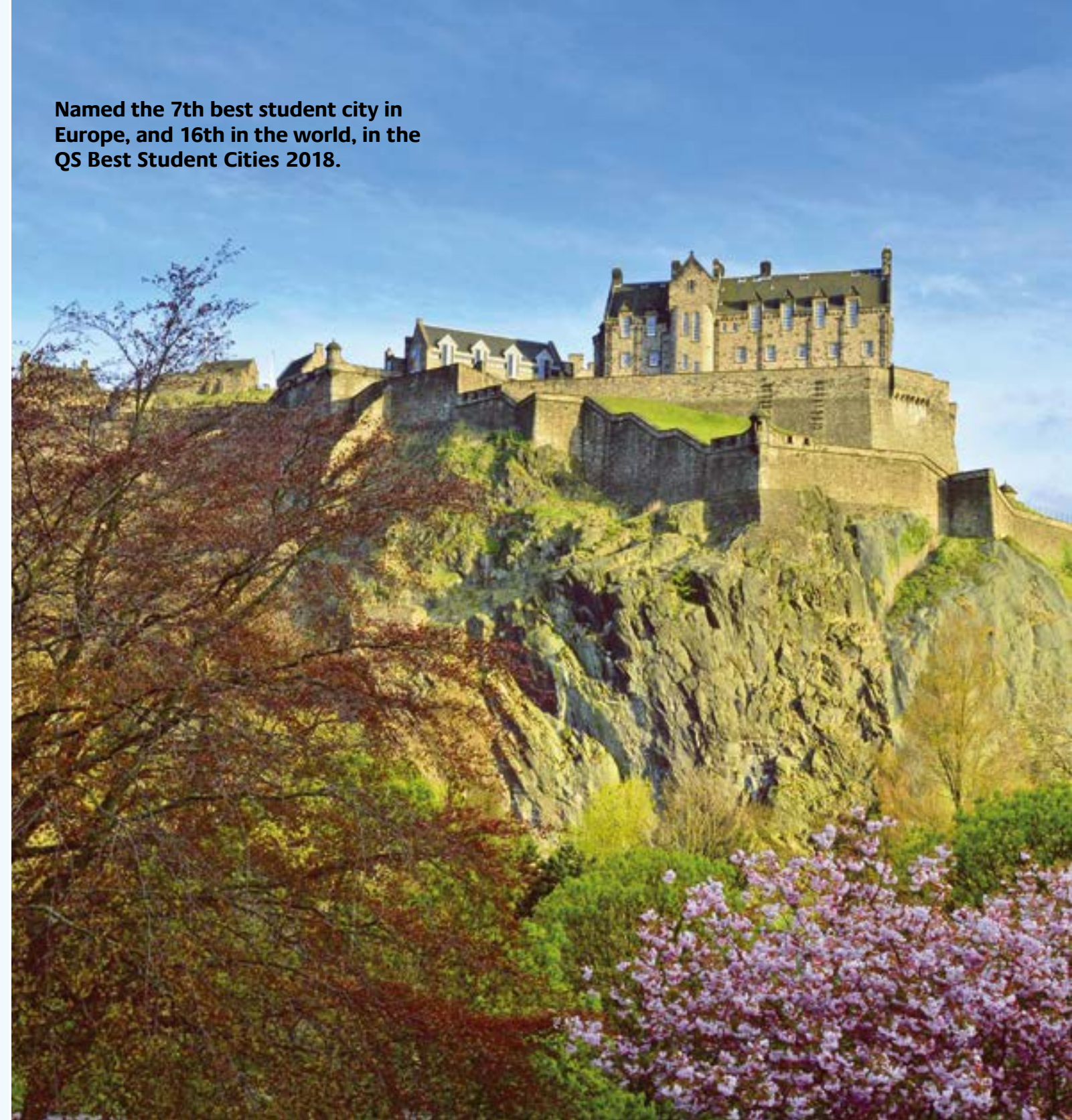


“Edinburgh has that perfect balance between the amenities of a capital city and the charm of a small town.”

Caroline Stevens, USA
MA (Hons) Sociology with Quantitative Methods



Named the 7th best student city in Europe, and 16th in the world, in the QS Best Student Cities 2018.



Edinburgh is a UNESCO City of Literature and has two UNESCO World Heritage sites – one covering the Old and New Towns and the other for the Forth Bridge.



Edinburgh is home to more FTSE 100 companies than any other UK city outside London.



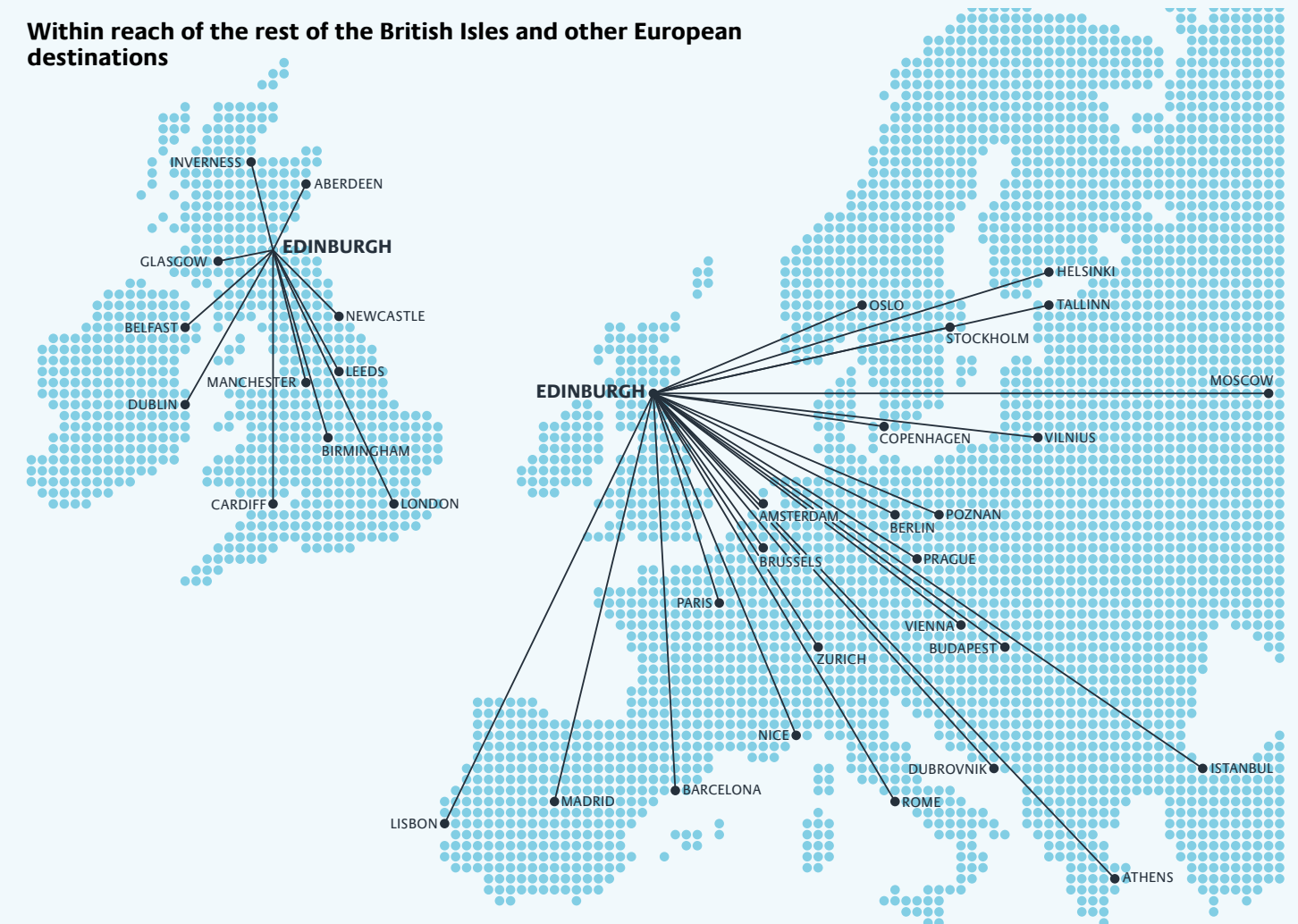
“My horizons have been broadened by my experience at Edinburgh. Classmates come from different linguistic and cultural backgrounds, and I enjoy learning with them.”
Jialin Dong, from China, MSc Applied Linguistics



Visit us

We encourage you to come and discover if Edinburgh is the place for you, and we invite anyone interested in postgraduate study at Edinburgh to attend one of our events.

Within reach of the rest of the British Isles and other European destinations



Open days

Our Postgraduate Open Day, on Wednesday 14 November 2018, is a great way to find out more about the University, meet staff and fellow prospective students and ask any questions in person. If you can't come to the Open Day, you might be interested in attending one of our student-led campus tours.
www.ed.ac.uk/postgraduate-open-day

Travel

Edinburgh is easily accessible from across Europe and beyond. The city is served by an excellent international airport, and rail and road links across the country.

Travel information

www.ed.ac.uk/visit/city/getting-here

Our visits to you

If you are unable to visit the University, we attend events worldwide during the year giving you the opportunity to come and meet us and speak to us in person:
www.ed.ac.uk/postgraduate/meet-us



Book a student-led tour at:
www.ed.ac.uk/visit/tours

Accommodation

Our students travel from all over the world to study here and we aim to provide the best range and standard of accommodation possible.

Accommodation for postgraduate students is all self-catered and can be found across a range of convenient locations within easy reach of most key University buildings and Edinburgh city centre.

University accommodation offers:

- comprehensive community and welfare networks from our Residence Life team;
- mixed gender residences, with some single sex flats available;
- laundry facilities;
- secure cycle storage;
- personal contents insurance;
- network services in each bedroom for access to email and the internet.

Guarantees and deadlines

You are guaranteed an offer of University accommodation if:

- you are a new, single postgraduate taught (PGT) student from outside the UK and EU; or
- you are a single postgraduate research (typically PhD) student, whether from the UK, EU or international.

In such cases, guarantees apply as long as:

- your accommodation application is received by **31 July 2019**;
- you have accepted an unconditional firm offer to study at the University by **31 July 2019**;
- you will be studying in Edinburgh for the whole of the academic year starting in **September 2019**.

Online applications for accommodation can typically be made from the beginning of March. Offers of accommodation are then made from the end of May onwards.

Accommodation options

We offer a wide variety in either traditional halls of residence or blocks of self-contained flats, the latter typically varying in size from four to six single study bedrooms. There is a mix of en-suite rooms and those with shared bathroom facilities. Our new accommodation at **Buccleuch Place/Buccleuch Place Lane**, is very close to George Square and the Main Library and is built around two courtyards with landscaped grounds, a double-height common room and a games room. Buccleuch Place is an extensive and sensitive refurbishment of historic houses. Retaining original features, the 205 single and 26 twin study bedrooms are in flats shared between five to seven students and have shared facilities with a mix of single, superior single and twin rooms. Buccleuch Place Lane offers 136 rooms in new-build flats with en-suite shower rooms. Our recently developed, award-winning **O'Shea Hall** postgraduate village complex at Holyrood provides fantastic and convenient options for more than 1,100 students. Unique to the UK is the main residence hall (O'Shea Central) with 480 en-suite bedrooms incorporating a large communal kitchen with space for all residents to cook, eat and get together. Each student has allocated cupboard, fridge and freezer space and access to a bookable dining room. The main common room on the ground floor can be enjoyed by all residents to come together to study or celebrate. There is a dedicated study room, a TV room and four bookable music rooms equipped with instruments.

We also offer accommodation for those with disabilities. For details, please contact our Allocations team.

Residence Life

Most of our properties are managed by professional Wardens, supported by specially trained Resident Assistants who are usually students living on site, readily available to address welfare or community issues. They also organise and host a wide range of social and academic activities.

Costs

Rents for our accommodation typically include utility costs, internet, personal contents insurance and some cleaning. Rents for single rooms during the 2018/19 academic year, based on a typical 51-week lease, are in the range of £5,394-£9,034. Further information is available online.

Sharing rooms

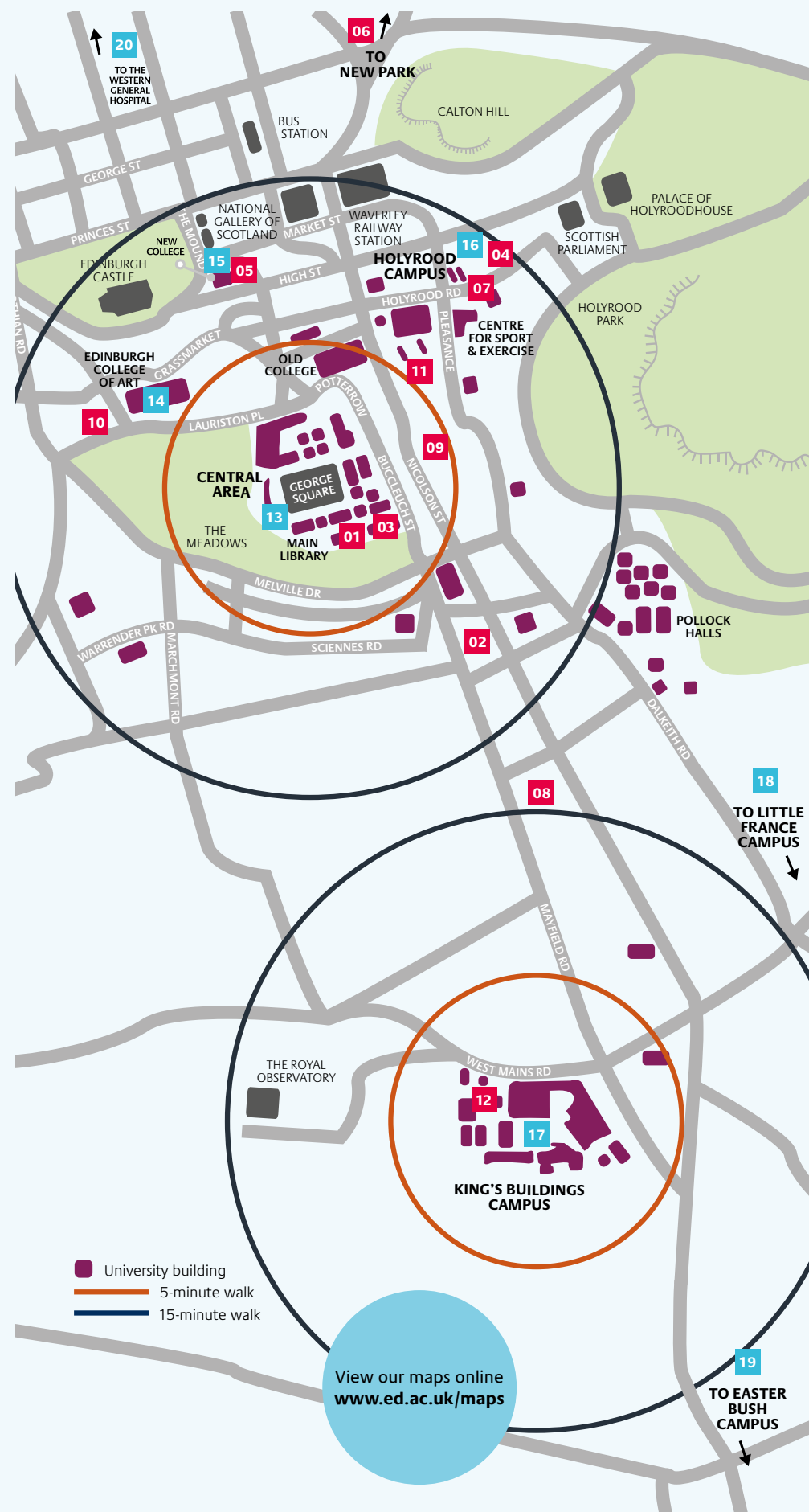
If you are interested in sharing and express this preference in your application, we will do our very best to satisfy your request. There are many advantages to sharing. We use larger rooms and provide additional storage and study spaces. With 2018/19 rents starting from £4,432 per 51-week lease, your costs can be significantly reduced.

Family provision

For students coming to Edinburgh with a partner or a family, we do have limited accommodation suitable for families.

Private sector accommodation

If you are not guaranteed an offer of University accommodation, or choose not to take up such an offer, you will probably need to use the private sector. For more information, please visit: www.accom.ed.ac.uk/for-students/private-housing or edin.ac/private-accommodation



This map shows the University-managed accommodation planned for postgraduate students in 2019. The circles indicate the walking distance between the accommodation and the main University locations and resources.

- 01 Ascham Court
- 02 Blackwood Crescent/Causewayside
- 03 Buccleuch Place/Buccleuch Place Lane
- 04 Morgan Court
- 05 Mylne Court
- 06 New Park
- 07 O'Shea Hall
- 08 Ratcliffe Terrace
- 09 Richmond Place
- 10 Riego Street
- 11 Roxburgh Place
- 12 West Mains Road

13 George Square

Many of our Schools are located in the city centre, with the Royal Mile and Princes Street close by.

14 Edinburgh College of Art

The ECA main building, where you'll find studio and exhibition space, is based on Lauriston Place, close to George Square.

15 New College

The striking New College – home to the School of Divinity – lies close to Edinburgh Castle and overlooks Princes Street.

16 Holyrood

The Moray House School of Education is near the Royal Mile, the Scottish Parliament and the Palace of Holyroodhouse.

17 King's Buildings

Science and engineering subjects (other than informatics) are taught at King's Buildings, a 10-minute bus ride from the Central Area (a free University shuttle bus operates during semester time).

18 Little France

The Royal Infirmary of Edinburgh lies four miles from the city centre, next to our medical teaching and research facilities.

19 Easter Bush/Roslin

Six miles south of the Central Area is the Royal (Dick) School of Veterinary Studies, including the prestigious Small and Large Animal Hospitals and the Roslin Institute.

20 Western General

The research-intensive facilities of the Western General hospital are a 20-minute bus journey from the Central Area.



To apply, find out more or take a virtual tour, please visit: www.accom.ed.ac.uk



Choosing your programme

We offer a range of options for postgraduate study at Edinburgh. From professional qualifications to independent research, on-campus taught programmes to online part-time study, you'll find a mode of learning that suits your needs.

A full list of our programmes, with further information about each and guidance on how to apply is available online:
www.ed.ac.uk/postgraduate/degrees

Taught programmes

Masters

Duration: typically one year full time but occasionally can be longer if, for example, the programme includes a placement.

Masters programmes are designed to deepen knowledge in a subject studied at undergraduate level, although some of our postgraduate offerings may be suitable for students looking to change direction. Students on our taught masters programmes typically undertake a combination of taught courses, assessment and supervised research. Studies culminate in a dissertation or equivalent project.

Most of our taught masters programmes, across all subjects, lead to the award of MSc to distinguish postgraduate masters from our undergraduate MA. This is with the exception of awards from Edinburgh College of Art, which are normally postgraduate Master of Art (MA) or Master of Fine Art (MFA) awards. Other qualifications we offer include MBA, LLM, MMus, MEd and MTh.

Certificate or diploma

Duration: varies.

If you're unable to commit to a masters, many of our programmes have shorter study options that lead to the award of a postgraduate certificate (PgCert) or postgraduate diploma (PgDip).

Research programmes

Masters by Research

Duration: one year full time.

Programmes offered as MSc by Research are designed to prepare you for advanced research, although they can be taken as a qualification in their own right. An MSc by Research is assessed by an extended, independent, written dissertation.

MPhil

Duration: two years full time.

Programmes which are offered as an MPhil are ideal if you need to develop strong all-round knowledge of your subject, in-depth understanding of a specialised area, and the research skills to carry out and present a thesis – a piece of original research for submission for a higher degree. You may subsequently extend your studies to PhD registration subject to satisfactory progress.

PhD

Duration: three years full time.

A PhD is the highest academic research qualification, entailing research training and supervised research, either on a one-to-one basis with a supervisor or as part of a research team. PhD students gain the specialist background knowledge for the projected research, and develop the skills appropriate to research in that field. Their work culminates in a thesis. The precise focus of the research will be agreed between the student and the supervisor and is likely to develop over the course of the PhD. The PhD is assessed by an oral examination in which the candidate defends his or her research thesis.

Professional doctorates

Duration: three to seven years full time.

Professional doctorates are specialist qualifications designed for professional development in specific areas, such as engineering and psychology. Professional doctorates combine advanced research training, a substantial contribution to knowledge through your own research and a rigorous reflection on professional practice.

Postgraduate professional development

Duration: varies.

Aimed at working professionals, postgraduate professional development (PgProfDev or PPD) allows you to advance your knowledge without the time or financial commitment of a full study programme. We offer a number of courses as credit-bearing PPD. These courses can be recognised in their own right or the credit can be built up over time towards a PgCert, PgDip or Masters.

Part-time study

Please note that although many of our on-campus programmes offer part-time options, these are only available to UK and EU students due to UK visa regulations.

“Edinburgh attracts the best and the brightest. My cohort was an especially strong group of highly eager learners from all walks of the educational field, many of whom I still call friends and consult now.”

Michael Sean Gallagher, USA
MSc Digital Education (Online Learning)

Online programmes

Since 2005, the University of Edinburgh has delivered flexible, online programmes to thousands of postgraduate students around the world. This allows you to study with us, wherever you live, alongside your work or other commitments.

Today, we offer an exceptional range of almost 70 innovative online programmes across a wide range of subject areas. We have around 3,000 students currently studying online programmes with us and we take the delivery of teaching online just as seriously as we do on-campus. Our online programmes are academically equivalent to qualifications earned on-campus and delivered by dedicated academics, many of whom are leaders in their field. Your experienced programme team and personal tutor will ensure you are fully supported in all aspects of your student experience.

Flexibility

Our online, part-time format is particularly suited to students already in full- or part-time employment or with other professional or personal commitments. It offers a flexible learning environment that can be adapted to suit your individual needs. You can choose to study at a time and in a place that suits you, saving relocation costs. Our online learning technology is fully interactive and allows you to communicate with your highly qualified teaching staff from the comfort of your own home or workplace, or on the go. You will have access to our excellent resources and will become part of a supportive online community, bringing together students and tutors from around the world and enabling you to have the 'Edinburgh experience' wherever you live.

Most of our students opt to study to masters level on a part-time basis, but it is also possible to study some programmes full time or to exit earlier with a postgraduate diploma (PgDip) or postgraduate certificate (PgCert). Some programmes can be studied intermittently, allowing you to take up to six years to complete a masters. In addition to compulsory courses, you can choose option courses from a variety of programmes, allowing you to tailor your studies to suit your individual interests and requirements, and enhance your career opportunities in an increasingly competitive marketplace.

For those looking for a shorter period of study, some of our programmes offer stand-alone courses which provide training

on specific subjects. These are credit-bearing courses (up to 50 postgraduate credits) and may contribute towards a postgraduate qualification in the future. Use the apply buttons for your programme in the online Degree Finder to see if the Postgraduate Professional Development option is available.

When you consider all the benefits of flexible online study, it's not surprising that even locally-based professionals choose this option.

A global academic community

Distance isn't a barrier when you choose to study online. We offer a highly participative learning environment, which is both supportive and intellectually stimulating. Students join us from all over the world, adding their rich diversity of professional and academic experience to a truly international learning community. Our students value the different perspectives their fellow students bring, and welcome the support provided by our expert teaching staff.

Career benefits

Many of our students have chosen to study a postgraduate qualification online in order to enhance their existing career or to enable them to move to a new one. Studying online while working means you can immediately apply what you learn to your profession, combine the theoretical with the practical, and bring a global perspective to your role and profession. The critical and analytical research skills gained during a masters can also be a platform for advanced research such as a PhD, and many students go on to have their work published in high-impact journals and at conferences.

4,000

students have graduated from our online programmes.



Deepika Srivastava Joshi

Master of Public Health student from India

Hearing the diverse perspectives of online classmates from around the world enabled Deepika to incorporate a global outlook when solving local problems at work.



I came in with some expectation of the level of involvement of the staff and of interaction with my fellow students, with obvious apprehensions about how this would work for me.

Those expectations were far surpassed and the apprehension disappeared. The University provided excellent academic training through various practical assignments, video lectures, suggested reading, mandatory discussions, and engagement on discussion boards with students from all over the world who bring their perspective of public health issues and models to address them.

Students shared stories of innovations and hope, successes and failures, and every individual experience enriched my understanding of global public health. I have been able to use these learnings and apply them to my job as a strategic information advisor, with the US Centers for Disease Control and Prevention.

The biggest personal impact has been the development of skills and the ability to learn from staff and classmates who, despite being thousands of miles away, have made meaningful contributions towards enhancing my engagement with public health. I have been able to triangulate my experiences with theirs, and this diversity of perspective has made my experience more holistic and grounded.



Kelly Ann Dempsey

MSc Biodiversity, Wildlife & Ecosystem Health graduate (2014) from Scotland

Studying online part time enabled Kelly to gain a postgraduate award that complemented her profession.



I wanted to gain further ecological qualifications and, as I worked full time, the online learning MSc appealed greatly. The University has a first-class reputation and the appealing course outline cemented the decision that this was the programme for me.

I found that I could balance my time commitment to study with work requirements well. It helped that I worked in an ecology-related field. I often discussed projects I worked on in group discussions and based assignments on work where this was appropriate. One of the most exciting things about the MSc was being able to learn from people from all over the world. It was a unique experience to participate in discussion fuelled by wide ranging experiences and backgrounds.

I was more than happy to manage my workload remotely. Visiting campus would have been less convenient due to work commitments. A supervisor was only a phone call away during the dissertation process and this proved to be sufficient.

I still work full time for a Scottish local authority on biodiversity, climate change and river catchment management issues so my MSc has been useful. I also work for a national conservation charity on an ad-hoc basis and participate in species monitoring projects.

How to apply

Applications for postgraduate study are made online via our Degree Finder: www.ed.ac.uk/postgraduate/degrees

Taught postgraduate programmes

Select a programme using our online Degree Finder to check you meet our academic and English language entry requirements.

Academic entry requirements

As a guide, postgraduate applicants are usually expected to have a minimum of a 2:1 honours degree, or its international equivalent. Guidance on these equivalents is available online:

www.ed.ac.uk/international/postgraduate-entry

Specific information on the academic entry requirements for your programme can be found in its listing in the online Degree Finder.

English language requirements

If English is not your first language you will have to provide evidence of your written and spoken English skills.

For quick reference, the index of masters programmes on pages 30-35 uses a symbol system. You'll find the key for this system on page 30. Although this is as comprehensive as possible there are some exceptions. Please treat it as a guide and check the detailed language requirements for your programme online before you apply.

Conditions and exemptions

Your English language qualification must be no more than three years old from the start date of the programme you are applying to study, unless you are using an English language test such as IELTS for entry, in which case it must be no more than two years old:

www.ed.ac.uk/english-requirements/pg

Postgraduate research

If you are considering PhD study, there are two main routes you can take to make your application:

Applying to a funded project

Our Schools or Centres for Doctoral Training will often receive funding to carry out research on a specific topic. They will advertise doctoral positions, which are funded projects normally advertised on the School or Institute website and often also on external websites, such as FindAPhD.com. The formal application will still be made via the University website.

Using this route usually means that you will not need to develop a research proposal as part of the application but will need to use your personal statement to demonstrate your relevant skills and experience and the subject expertise which make you the ideal candidate.

Proposing your own research topic

Alternatively, if you wish to carry out independent research, you can apply for a PhD by submitting your research topic to the University.

We recommend you contact a potential supervisor at the University and discuss your intended research before you apply. They can give you feedback on your ideas and identify whether the University has supervisory expertise in your chosen area. If your intended research is multidisciplinary, it might be helpful to talk to more than one potential supervisor:

www.ed.ac.uk/postgraduate/phd-supervisors

If you propose your own topic, you will need to write and submit a research proposal with your application. This will help us assess both your suitability for a research programme and whether or not we can offer you appropriate supervision and facilities. It can potentially also be used to apply to external bodies for funding:

www.ed.ac.uk/postgraduate/research-proposals

Further information on PhD study:

www.ed.ac.uk/postgraduate/doctoral-study

Please note

If you already have a PhD, or are near completion, we advertise postdoctoral vacancies, for current research projects being conducted at the University, at: www.vacancies.ed.ac.uk



You can find details about your programme and the compulsory and option courses available online: www.drps.ed.ac.uk

STEP 1

Make sure your supporting documentation is all in order, write your 500-word personal statement, and select referees.

Supporting your application

The supporting documentation required depends on the programme you apply for. Typically, you will be asked to provide:

- academic transcripts;
- your degree certificate;
- a personal statement;
- academic reference(s); and
- a research proposal (if appropriate).

Some programmes may ask for specific evidence of your suitability for study, such as a portfolio, demonstration of relevant experience, or in a small number of cases, attendance at interview. Check specific programme entry requirements online.

STEP 2

Apply online using the link from your programme's Degree Finder entry. You will create an online account and upload supporting documentation. Once your account is set up you can access your online application through the Applicant Hub, save a draft to come back to and edit later, then complete and submit it. Further guidance is available online: www.ed.ac.uk/student-systems/support-guidance/submitting-online-application

Applying via a representative

The University has approved representatives in 37 countries worldwide. Representatives can guide you through the application process if you prefer: www.ed.ac.uk/international/representatives

Please note

A small number of programmes charge an application fee and/or require a deposit. Where applicable this will be stated in the programme's Degree Finder entry: www.ed.ac.uk/postgraduate/degrees

When to apply

Application deadlines are shown on your programme's Degree Finder entry. You may apply to the University at any time but we strongly recommend that you apply as early as possible before the programme fills up, particularly if you need to allow time to apply for a visa or if you intend to apply for financial support – you must have received an offer from the University in order to apply for some sources of funding.

Applying for a Tier 4 General Student visa

If you are a national of a country outside the EU, it is likely that you will have to apply for a student visa to study on campus at the University of Edinburgh: www.ed.ac.uk/immigration

STEP 3

Track your application online through the Applicant Hub. We will use your online account to contact you if there are any problems with your application and to inform you of the outcome so please check the Applicant Hub regularly for important notifications.

If you haven't done so, you might like to visit the University (see page 21) or if you can't visit us, you might like to participate in our regular online information sessions, usually held on the last Wednesday of each month: www.ed.ac.uk/postgraduate/online-events

If your application is successful, we look forward to welcoming you to Edinburgh: www.ed.ac.uk/new-students

More information

For further information about how to apply please visit: www.ed.ac.uk/postgraduate/applying

Index of masters programmes

For the latest information on postgraduate opportunities visit our Degree Finder:
www.ed.ac.uk/postgraduate/degrees

Please note that although we offer part-time options on many of our on-campus programmes, due to the UK's visa restrictions for international students, these are only available for UK/EU students. However, all our students can study part-time on our online learning programmes.

Our English language requirements vary across our programmes. The symbols in column three of the tables correspond to the key below. Because of space restrictions, this is only a guide so please do check online for the most up-to-date information.

English language requirements

▼ Please refer to our Degree Finder for specific score requirements for this programme: www.ed.ac.uk/postgraduate/degrees

IELTS Academic module	7.0 (with 6.5 in each module)
TOEFL-iBT	100 (with at least 23 in each section)
CAE/CPE	185 (at least 176 in each module)
Pearson Test of English	67 (at least 61 in each section)
Trinity ISE	ISE III (with a pass in all four components)

IELTS Academic module	7.0 (with 6.0 in each module)
TOEFL-iBT	100 (with at least 20 in each section)
CAE/CPE	185 (at least 169 in each module)
Pearson Test of English	67 (at least 56 in each section)
Trinity ISE	ISE III (with a pass in all four components)

IELTS Academic module	6.5 (with 6.0 in each module)
TOEFL-iBT	92 (with at least 20 in each section)
CAE/CPE	176 (at least 169 in each module)
Pearson Test of English	61 (at least 56 in each section)
Trinity ISE	ISE II (with distinctions in all four components)

Abbreviations used in the table

IELTS	International English Language Testing System
TOEFL-iBT	Test of English as a Foreign Language – Internet-based Test
CPE	Cambridge Certificate of Proficiency in English
CAE	Cambridge Certificate in Advanced English
Trinity ISE	Integrated Skills in English

Online learning programmes

■ A highlighted row identifies an online learning programme

College of Arts, Humanities & Social Sciences

EDINBURGH COLLEGE OF ART
www.eca.ed.ac.uk

ARCHITECTURE		ENGLISH LANGUAGE REQUIREMENTS (SEE PAGE 30)
Advanced Sustainable Design	MSc 1yr FT	◆
Architectural & Urban Design	MSc 1yr FT	◆
Architectural Conservation	MSc 1yr FT	●
Architectural History & Theory	MSc 1yr FT (2yrs PT UK/EU only)	●
Architecture	MSc by Research 1yr FT (2yrs PT UK/EU only)	●
Art, Space & Nature	MA 1yr FT, MFA 21mths FT	◆
Cultural Landscapes	MSc 1yr FT	◆
Cultural Studies	MSc by Research 1yr FT (2yrs PT UK/EU only)	■
Design & Digital Media	MSc 1yr FT (2yrs PT UK/EU only)	●
Digital Media & Culture	MSc by Research 1yr FT (2yrs PT UK/EU only)	●
Digital Media Design	MSc 1yr FT (2-6yrs PT)	●
Digital Studio Practice	MSc by Research 1yr FT (2yrs PT UK/EU only)	●
Landscape Architecture	EMILA/MLA 21mths FT	▼
Landscape & Wellbeing	MSc 1yr FT (2yrs PT UK/EU only)	●
Master of Architecture	MArch 21mths FT	◆
Material Practice	MSc 1yr FT	◆
Reflective Design Practices	MSc by Research 1yr FT (2yrs PT UK/EU only)	●
Urban Strategies & Design	MSc 1yr FT (2yrs PT UK/EU only)	▼

ART		
Collections & Curating Practices	MSc by Research 1yr FT (2yrs PT UK/EU only)	■
Contemporary Art & Anthropology	MSc by Research 1yr FT (2yrs PT UK/EU only)	◆
Contemporary Art Practice	MA 1yr FT (2yrs PT UK/EU only), MFA 21mths FT	◆
Contemporary Art Theory	MA 1yr FT (2yrs PT UK/EU only)	◆
Interdisciplinary Creative Practices	MSc by Research 1yr FT (2yrs PT UK/EU only)	●

DESIGN		
Animation	MFA 21mths FT	▼
Design for Change	MA 1yr FT	●
Design Informatics	MA 1yr FT, MFA 21mths FT	●
Fashion	MFA 21mths FT	●
Film Directing	MA 1yr FT, MFA 21mths FT	◆
Glass	MA 1yr FT, MFA 21mths FT	●
Graphic Design	MA 1yr FT, MFA 21mths FT	●
Illustration	MA 1yr FT, MFA 21mths FT	●
Interior Design	MA 1yr FT	●
Jewellery	MFA 21mths FT	●
Performance Costume	MFA 21mths FT	●
Textiles	MFA 21mths FT	●

HISTORY OF ART		
Art in the Global Middle Ages	MSc 1yr FT (2yrs PT UK/EU only)	■
History of Art	MSc by Research 1yr FT (2yrs PT UK/EU only)	■
History of Art, Theory & Display	MSc 1yr FT (2yrs PT UK/EU only)	■
Modern & Contemporary Art: History, Curating & Criticism	MSc 1yr FT (2yrs PT UK/EU only)	■
Renaissance & Early Modern Studies	MSc 1yr FT (2yrs PT UK/EU only)	■

MUSIC		
Acoustics & Music Technology	MSc 1yr FT (2yrs PT UK/EU only)	●
Composition for Screen	MSc 1yr FT (2yrs PT UK/EU only)	●
Music	MSc by Research 1yr FT (2yrs PT UK/EU only)	●
Musiology	MMus 1yr FT (2yrs PT UK/EU only)	●
Sound Design	MSc/MSc by Research 1yr FT (2yrs PT UK/EU only)	●

BUSINESS SCHOOL
www.business-school.ed.ac.uk

ENGLISH LANGUAGE REQUIREMENTS (SEE PAGE 30)	
Accounting & Finance	MSc 1yr FT
Banking & Risk	MSc 1yr FT
Business Administration, Master of (MBA)	MBA 12mths FT
Business Analytics	MSc 1yr FT
Carbon Finance	MSc 1yr FT
Entrepreneurship & Innovation	MSc 1yr FT
Executive Master of Business Administration (EMBA)*	MBA 27mths PT
Finance	MSc 1yr FT
Finance, Technology & Policy	MSc 1yr FT
Human Resource Management	MSc 1yr FT
International Business & Emerging Markets	MSc 1yr FT
International Human Resource Management	MSc 1yr FT
Management	MSc/MSc by Research 1yr FT
Marketing	MSc 1yr FT
Marketing & Business Analysis	MSc 1yr FT
*Commences September 2020	

SCHOOL OF DIVINITY
www.ed.ac.uk/divinity

ENGLISH LANGUAGE REQUIREMENTS (SEE PAGE 30)	
Biblical Studies	MSc/MTh 1yr FT (2yrs PT UK/EU only)
Ethics & Practical Theology	MSc/MTh by Research 1yr FT (2yrs PT UK/EU only)
Hebrew & Old Testament Studies	MSc/MTh by Research 1yr FT (2yrs PT UK/EU only)
History of Christianity	MSc/MTh by Research 1yr FT (2yrs PT UK/EU only)
Islamic Studies & Christian Muslim Relations	MSc by Research 1yr FT (2yrs PT UK/EU only)
New Testament & Christian Origins	MSc/MTh by Research 1yr FT (2yrs PT UK/EU only)
Religious Studies	MSc/MSc by Research 1yr FT (2yrs PT UK/EU only)
Science & Religion	MSc/MSc by Research 1yr FT (2yrs PT UK/EU only)
Systematic Theology	MSc/MTh by Research 1yr FT (2yrs PT UK/EU only)
Theology in History	MSc/MTh 1yr FT (2yrs PT UK/EU only)
World Christianity	MSc/MTh or MSc/MTh by Research 1yr FT (2yrs PT UK/EU only)

SCHOOL OF ECONOMICS
www.ed.ac.uk/economics

ENGLISH LANGUAGE REQUIREMENTS (SEE PAGE 30)	
Economics	MSc 1yr FT (2yrs PT UK/EU only)
Economics (Econometrics)	MSc 1yr FT (2yrs PT UK/EU only)
Economics (Finance)	MSc 1yr FT (2yrs PT UK/EU only)

SCHOOL OF EDUCATION
www.ed.ac.uk/education

ENGLISH LANGUAGE REQUIREMENTS (SEE PAGE 30)	
Dance Science & Education	MSc 1yr FT (2-6yrs PT UK/EU only), PgDip 9mths FT (1-4yrs PT UK/EU only)
Dance Science & Education with pathway to Qualified Teacher status and GTCS registration	MSc 15mths FT (24mths PT UK/EU only)
Digital Education	MSc 2-6yrs PT, PgDip 1-4yrs PT, PgCert 1-2yrs PT
Education	MSc/MSc by Research 1yr FT (2-3yrs PT UK/EU only)
Inclusive Education	MSc 1yr FT (2-6yrs PT UK/EU only), PgDip 2-4yrs PT UK/EU only, PgCert 1-2yrs PT UK/EU only
Language Education	MSc 1yr FT (2yrs PT UK/EU only), PgDip 9mths FT (21mths PT UK/EU only)

Online learning programmes

■ A highlighted row identifies an online learning programme

Leadership & Learning	MEd 3-6yrs PT UK/EU only, PgDip 2-4yrs PT UK/EU only, PgCert 1-2yrs PT UK/EU only	●
Outdoor Education	MSc 15mths FT (2-6yrs PT UK/EU only), PgDip 1yr FT (1-4yrs PT UK/EU only), PgCert 1-2yrs PT UK/EU only	▼
Outdoor Environmental & Sustainability Education	MSc 15mths FT (2-6yrs PT UK/EU only), PgDip 1yr FT (1-4yrs PT UK/EU only), PgCert 1-2yrs PT UK/EU only	▼
Performance Psychology	MSc 1yr FT (2-6yrs PT UK/EU only), PgDip 9mths FT (1-4yrs PT UK/EU only)	◆
Physical Activity for Health	MSc 1yr FT (2-6yrs PT UK/EU only), PgDip 9mths FT (1-4yrs PT UK/EU only), PgCert 1-2yrs PT UK/EU only	◆
Professional Graduate Diploma in Education (Primary)	PGDE 1yr FT	▼
Professional Graduate Diploma in Education (Secondary)	PGDE 1yr FT	▼
Social Justice & Community Action	MSc 2-6yrs PT, PgDip 2-4yrs PT, PgCert 1-2yrs PT	◆
Sport Policy, Management & International Development	MSc 1yr FT (2-6yrs PT UK/EU only), PgDip 9mths FT (1-4yrs PT UK/EU only)	◆
Strength & Conditioning	MSc 1yr FT (2-6yrs PT UK/EU only), PgDip 9mths FT (1-4yrs PT UK/EU only)	◆
Teaching English to Speakers of Other Languages (TESOL)	MSc 1yr FT (2-6yrs PT UK/EU only), PgDip 9mths FT (1-4yrs PT UK/EU only)	■
Transformative Learning & Teaching	MSc 21mths FT	▼

SCHOOL OF HEALTH IN SOCIAL SCIENCE
www.ed.ac.uk/health-social-science

Advancing Nursing* (*subject to approval)	MSc 1yr FT (2-3yrs PT UK/EU only), PgDip 21mths PT (UK/EU only), PgCert 9mths PT (UK/EU only)	◆
Applied Psychology (Healthcare) for Children & Young People	MSc 1yr FT	■
Children & Young People's Mental Health & Psychological Practice	MSc 1yr FT	■
Children & Young People's Mental Health & Psychological Practice	MSc 2-6yrs PT	■
Clinical & Health Psychology	MSc by Research 1yr FT (2yrs PT UK/EU only)	■
Clinical Psychology	DClinPsychol 3yrs FT	■
Counselling	MCouns 4yrs PT (UK/EU only), PgDip 3yrs PT (UK/EU only), PgCert 1yr PT (UK/EU only)	◆
Counselling (Interpersonal Dialogue)	MCouns 2yrs FT	●
Counselling Studies	MSc/MSc by Research 1yr FT (2yrs PT UK/EU only)	◆
Health Humanities & Arts	MSc 1yr FT (2yrs PT UK/EU only)	■
Nursing Studies	MSc by Research 1yr FT (2-3yrs PT UK/EU only)	■
Psychology of Mental Health (Conversion)	MSc 1yr FT (up to 6yrs PT UK/EU only)	■
Psychological Therapies	MSc 2-6yrs PT (UK/EU only)	■
Psychotherapy & Counselling	DPsychotherapy 4yrs FT (7yrs PT UK/EU only)	■

Index of masters programmes (continued)

SCHOOL OF HISTORY, CLASSICS & ARCHAEOLOGY
www.ed.ac.uk/hca

ENGLISH LANGUAGE
REQUIREMENTS
(SEE PAGE 30)

HISTORY		
American History	MSc 1yr FT (2yrs PT UK/EU only)	
Contemporary History	MSc 1yr FT (2yrs PT UK/EU only)	
Economic & Social History	MSc by Research 1yr FT (2yrs PT UK/EU only)	
History	MSc/MSc by Research 1yr FT (2yrs PT UK/EU only)	
History	MSc 1yr FT (2-6yrs PT), PgDip 1yr FT (2-3yrs PT, exit only), PgCert 1yr FT (2yrs PT, exit only)	
Intellectual History	MSc 1yr FT (2yrs PT UK/EU only)	
Medieval History	MSc 1yr FT (2yrs PT UK/EU only)	
Scottish History	MSc/MSc by Research 1yr FT (2yrs PT UK/EU only)	

CLASSICS		
Ancient History	MSc 1yr FT (2yrs PT UK/EU only)	
Classical Art & Archaeology	MSc 1yr FT (2yrs PT UK/EU only)	
Classics	MSc/MSc by Research 1yr FT (2yrs PT UK/EU only)	
Late Antique Islamic & Byzantine Studies	MSc 1yr FT (2yrs PT UK/EU only)	

ARCHAEOLOGY		
Archaeology	MSc/MSc by Research 1yr FT (2yrs PT UK/EU only)	
European Archaeology	MSc 1yr FT (2yrs PT UK/EU only)	
Human Osteoarchaeology	MSc 1yr FT	
Mediterranean Archaeology	MSc 1yr FT (2yrs PT UK/EU only)	

SCHOOL OF LAW
www.law.ed.ac.uk

ENGLISH LANGUAGE
REQUIREMENTS
(SEE PAGE 30)

Commercial Law	LLM 1yr FT (2yrs PT UK/EU only)	
Comparative & European Private Law	LLM 1yr FT (2yrs PT UK/EU only)	
Corporate Law	LLM 1yr FT (2yrs PT UK/EU only)	
Criminal Law & Criminal Justice	LLM 1yr FT (2yrs PT UK/EU only)	
Criminology & Criminal Justice	MSc 1yr FT (2yrs PT UK/EU only)	
European Law	LLM 1yr FT (2yrs PT UK/EU only)	
Global Crime, Justice & Security	MSc 1yr FT (2yrs PT UK/EU only)	
Global Environment & Climate Change Law	LLM 1yr FT (2yrs PT UK/EU only)	
Human Rights	LLM 1yr FT	
Information Technology Law	LLM 1yr FT (20mths–3yrs PT)	
Innovation, Technology & the Law	LLM 1yr FT (2yrs PT UK/EU only)	
Innovation, Technology & the Law	LLM 1yr FT (20mths–3yrs PT)	
Intellectual Property Law	LLM 1yr FT (2yrs PT UK/EU only)	
Intellectual Property Law	LLM 32mths–3yrs PT	
International Banking Law & Finance	LLM 1yr FT	
International Commercial Law & Practice	LLM 1yr FT (20mths–3yrs PT)	
International Economic Law	LLM 1yr FT (2yrs PT UK/EU only)	
International Law	LLM 1yr FT (2yrs PT UK/EU only)	
Law	LLM 1yr FT (2yrs PT UK/EU only)	
Law	LLM by Research 1yr FT (2yrs PT UK/EU only)	
Law	LLM 1yr FT (20mths–3yrs PT)	
Medical Law & Ethics	LLM 1yr FT (2yrs PT UK/EU only)	
Medical Law & Ethics	LLM 1yr FT (2-3yrs PT)	
Postgraduate Certificate in Law	PgCert 12mths FT (20mths PT)	

SCHOOL OF LITERATURES, LANGUAGES & CULTURES
www.ed.ac.uk/literatures-languages-cultures

ENGLISH LANGUAGE
REQUIREMENTS
(SEE PAGE 30)

LITERATURE & LITERARY THEORY		
Book History & Material Culture	MSc 1yr FT (2yrs PT UK/EU only)	
Comparative Literature	MSc 1yr FT (2yrs PT UK/EU only)	
Creative Writing	MSc 1yr FT / MSc by Research 1yr FT (2yrs PT UK/EU only)	
English Literature	MSc by Research 1yr FT (2yrs PT UK/EU only)	
English Literature: American Literature	MSc by Research 1yr FT (2yrs PT UK/EU only)	
English Literature: Critical Theory	MSc by Research 1yr FT (2yrs PT UK/EU only)	
English Literature: Literature & Modernity: 1900 to the present	MSc 1yr FT (2yrs PT UK/EU only)	
English Literature: Literature & Society: Enlightenment, Romantic & Victorian	MSc 1yr FT (2yrs PT UK/EU only)	
English Literature: Medieval Literature	MSc by Research 1yr FT (2yrs PT UK/EU only)	
English Literature: Postcolonial Literature	MSc by Research 1yr FT (2yrs PT UK/EU only)	
English Literature: Renaissance Literature	MSc by Research 1yr FT (2yrs PT UK/EU only)	
English Literature: Romanticism	MSc by Research 1yr FT (2yrs PT UK/EU only)	
English Literature: Scottish Literature	MSc by Research 1yr FT (2yrs PT UK/EU only)	
English Literature: US Literature – Cultural Values from Revolution to Empire	MSc 1yr FT (2yrs PT UK/EU only)	
English Literature: Victorian Literature	MSc by Research 1yr FT (2yrs PT UK/EU only)	
Medieval Literatures & Cultures	MSc 1yr FT (2yrs PT UK/EU only)	

LANGUAGE STUDIES		
Advanced Arabic	MSc 1yr FT	
Chinese	MSc by Research 1yr FT (2yrs PT UK/EU only)	
Chinese Studies	MCS 2yrs FT	
French	MSc by Research 1yr FT (2yrs PT UK/EU only)	
German	MSc by Research 1yr FT (2yrs PT UK/EU only)	
Italian	MSc by Research 1yr FT (2yrs PT UK/EU only)	
Middle Eastern Studies with Advanced Arabic	MSc 2yrs FT	
Middle Eastern Studies with Arabic	MSc 2yrs FT	
Japanese	MSc by Research 1yr FT (2yrs PT UK/EU only)	
Russian	MSc by Research 1yr FT (2yrs PT UK/EU only)	
Sanskrit	MSc by Research 1yr FT (2yrs PT UK/EU only)	
Scandinavian Studies	MSc by Research 1yr FT (2yrs PT UK/EU only)	
Spanish, Portuguese & Latin American Studies	MSc by Research 1yr FT (2yrs PT UK/EU only)	
Translation Studies	MSc 1yr FT (2yrs PT UK/EU only)	

CULTURES & VISUAL ARTS		
Celtic & Scottish Studies	MSc/MSc by Research Celtic Studies 1yr FT (2yrs PT UK/EU only)	
Chinese Society & Culture	MSc 1yr FT (2yrs PT UK/EU only)	
East Asian Relations	MSc 1yr FT (2yrs PT UK/EU only)	
Film, Exhibition & Curation	MSc 1yr FT (2yrs PT UK/EU only)	
Film Studies	MSc 1yr FT (2yrs PT UK/EU only)	
Gender & Culture	MSc by Research 1yr FT (2yrs PT UK/EU only)	
Islamic & Middle Eastern Studies	MSc/MSc by Research 1yr FT (2yrs PT UK/EU only)	
Japanese Society & Culture	MSc 1yr FT (2yrs PT UK/EU only)	

Online learning programmes
A highlighted row identifies an online learning programme

Medieval Studies	MSc by Research 1yr FT (2yrs PT UK/EU only)	
Persian Civilisation	MSc 1yr FT (2yrs PT UK/EU only)	
Playwriting	MSc 1yr FT (2yrs PT UK/EU only)	
Scottish Ethnology	MSc by Research 1yr FT (2yrs PT UK/EU only)	
Theatre & Performance Studies	MSc 1yr FT (2yrs PT UK/EU only)	

SCHOOL OF PHILOSOPHY, PSYCHOLOGY & LANGUAGE SCIENCES
www.ed.ac.uk/ppls
PHILOSOPHY

ENGLISH LANGUAGE
REQUIREMENTS
(SEE PAGE 30)

Epistemology, Ethics & Mind	MSc 1yr FT (2-6yrs PT), PgDip 9mths FT (2-4yrs PT), PgCert 1-2yrs PT.	
Mind, Language & Embodied Cognition	MSc 1yr FT (2yrs PT UK/EU only)	
Philosophy	MSc/MSc by Research 1yr FT (2yrs PT UK/EU only)	
Philosophy, Science & Religion	MSc 1yr FT (2-6yrs PT), PgDip 9mths FT (2-4yrs PT), PgCert 1-2yrs PT.	

PSYCHOLOGY		
Cognition in Science & Society	MSc 1yr FT (2yrs PT UK/EU only)	
Developmental Cognitive Science	MSc 1yr FT (2yrs PT UK/EU only)	
Human Cognitive Neuropsychology	MSc 1yr FT (2yrs PT UK/EU only)	
Psychological Research	MSc 1yr FT (2yrs PT UK/EU only)	
Psychology	MSc by Research 1yr FT (2yrs PT UK/EU only)	
Psychology of Individual Differences	MSc 1yr FT (2yrs PT UK/EU only)	
Psychology of Language	MSc 1yr FT (2yrs PT UK/EU only)	
Social Psychology	MSc 1yr FT (2yrs PT UK/EU only)	

LINGUISTICS & ENGLISH LANGUAGE		
Applied Linguistics	MSc 1yr FT (2yrs PT UK/EU only)	
Developmental Linguistics	MSc 1yr FT (2yrs PT UK/EU only)	
English Language	MSc/MSc by Research 1yr FT (2yrs PT UK/EU only)	
Evolution of Language & Cognition	MSc 1yr FT (2yrs PT UK/EU only)	
Linguistics	MSc/MSc by Research 1yr FT (2yrs PT UK/EU only)	
Phonetics	MSc 1yr FT (2yrs PT UK/EU only)	
Speech & Language Processing	MSc 1yr FT (2yrs PT UK/EU only)	

SCHOOL OF SOCIAL & POLITICAL SCIENCE
www.sps.ed.ac.uk

ENGLISH LANGUAGE
REQUIREMENTS
(SEE PAGE 30)

Advanced Professional Studies (Mental Health Officer Award)	PgCert 1yr PT UK/EU only	
Africa & International Development	PgCert 12-24mths PT	
Africa & International Development	MSc 1yr FT (2yrs PT UK/EU only)	
African Studies	MSc 1yr FT (2yrs PT UK/EU only)	
Childhood Studies	MSc 1yr FT (2yrs PT UK/EU only)	
Comparative Public Policy	MSc 1yr FT (2yrs PT UK/EU only)	
Digital Society	MSc 1yr FT (2yrs PT UK/EU only)	
*Global Challenges	MSc 3-5yrs PT	
Global Environment, Politics & Society	MSc 1yr FT (2yrs PT UK/EU only)	
Global Health Policy	MSc/MSc by Research 1yr FT (2yrs PT UK/EU only)	
Global Health Policy	PgCert 12-24mths PT	
Health Policy	MSc 1yr FT (2yrs PT UK/EU only)	
International & European Politics	MSc 1yr FT (2yrs PT UK/EU only)	
International Development	MSc 1yr FT (2yrs PT UK/EU only)	
International Development	MSc 24-36mths PT, PgDip 24mths PT	
International Political Theory	MSc 1yr FT (2yrs PT UK/EU only)	
International Relations	MSc 1yr FT (2yrs PT UK/EU only)	
International Relations of the Middle East	MSc 1yr FT (2yrs PT UK/EU only)	

* The Global Challenges MSc comprises the Postgraduate Certificates in Global Development Challenges, Global Environment Challenges and Global Health Challenges. Entry is by one of these programmes.

International Relations of the Middle East with Advanced Arabic	MSc 2yrs FT	
International Relations of the Middle East with Arabic	MSc 2yrs FT	
Making Use of Digital Research	PgCert 12-24mths PT	
Management of Bioeconomy & Governance	MSc 1yr FT (2yrs PT UK/EU only)	
Medical Anthropology	MSc/MSc by Research 1yr FT (2yrs PT UK/EU only)	
Nationalism Studies	MSc 1yr FT (2yrs PT UK/EU only)	
Policy Studies	MSc 1yr FT (2yrs PT UK/EU only)	
Politics & International Relations	MSc by Research 1yr FT (2yrs PT UK/EU only)	
Public Policy	MPP 1yr FT	
Science & Technology in Society	MSc 1yr FT (2yrs PT UK/EU only)	
Science & Technology Studies	MSc by Research 1yr FT (2yrs PT UK/EU only)	
Social Anthropology	MSc/MSc by Research 1yr FT (2yrs PT UK/EU only)	
Social Policy	MSc by Research 1yr FT (2yrs PT UK/EU only)	
Social Research	MSc 1yr FT (2yrs PT UK/EU only), PgCert 1-2yrs PT (UK/EU only)	
Social Work	Master of Social Work 21mths FT, MSc by Research 1yr FT (2yrs PT UK/EU only)	
Socio-Cultural Studies	MSc by Research 1yr FT (2yrs PT UK/EU only)	
Sociology	MSc by Research 1yr FT (2yrs PT UK/EU only)	
Sociology & Global Change	MSc 1yr FT (2yrs PT UK/EU only)	
South Asian Studies	MSc by Research 1yr FT (2yrs PT UK/EU only)	

College of Medicine & Veterinary Medicine

EDINBURGH MEDICAL SCHOOL
www.ed.ac.uk/medicine-vet-medicine

ENGLISH LANGUAGE
REQUIREMENTS
(SEE PAGE 30)

Anatomical Sciences	PgDip 4yrs PT, PgCert 2yrs PT	
Biodiversity, Wildlife & Ecosystem Health	MSc 3yrs PT, PgDip 2yrs PT, PgCert 1yr PT	
Biomedical Sciences	MSc by Research 1yr FT	
Cardiovascular Biology	MSc by Research 1yr FT	
Cardiovascular Science	MSc by Research 1yr FT (2yrs PT UK/EU only)	
Clinical Education	MSc 3yrs PT, PgDip 2yrs PT, PgCert 1yr PT	
Clinical Management of Pain	MSc 6yrs PT, PgDip 4yrs PT, PgCert 2yrs PT or PgProfDev up to 2yrs PT	
Clinical Microbiology & Infectious Diseases	MSc 6yrs PT, PgDip 4yrs PT, PgCert 2yrs PT, or PgProfDev up to 2yrs PT	
Clinical Ophthalmology	ChM 2-4yrs PT	
Clinical Trials	MSc 6yrs PT, PgDip 4yrs PT, PgCert 2yrs PT, or PgProfDev up to 2 yrs PT	
Dental Sedation & Anxiety Management	PgCert 12mths PT	
Dental Surgery	DDS 2yrs FT (3-4yrs PT UK/EU only)	
Family Medicine	MFM 2yrs PT	
General Surgery	ChM 2yrs PT	
Genetics & Molecular Medicine	MSc by Research 1yr FT (2yrs PT UK/EU only)	
Genomic & Experimental Medicine	MSc by Research 1yr FT (2yrs PT UK/EU only)	

Index of masters programmes (continued)

Global eHealth	MSc 6yrs PT, PgDip 4yrs PT, PgCert 2yrs PT, or PgProfDev up to 2yrs PT	◆
Global Health & Infectious Diseases	MSc 6yrs PT, PgDip 4yrs PT, PgCert 2yrs PT, or PgProfDev up to 2yrs PT	◆
Global Health Challenges	PgCert 1-2yrs PT, PgProfDev up to 2yrs PT	●
Global Health Studies	PgCert 1yr PT, PgProfDev up to 2yrs PT	◆
Human Anatomy	MSc 1yr FT	◆
Imaging	MSc 6yrs PT, PgDip 4yrs PT, PgCert 2yrs PT, or PgProfDev up to 2yrs PT	◆
Infectious Diseases	MSc by Research 1yr FT	◆
Inflammation	MSc by Research 1yr FT (2yrs PT UK/EU only)	◆
Integrative Physiology	MSc by Research 1yr FT (2yrs PT UK/EU only)	◆
Internal Medicine	MSc 3yrs PT, PgDip 2yrs PT, PgCert 1yr PT	◆
International Animal Health	MSc 6yrs PT, PgDip 4yrs PT, PgCert 2yrs PT, or PgProfDev up to 2yrs PT	◆
Medical Sciences	MMedSci by Research 1yr FT (2yrs PT UK/EU only)	◆
Cancer (Edinburgh Cancer Research Centre)	MSc by Research 1yr FT (2yrs PT UK/EU only)	◆
Molecular Pathology & Genomic Medicine	PgCert 1yr PT, or PgProfDev up to 2yrs PT	◆
Neuroimaging for Research	MSc 6yrs PT, PgDip 4yrs PT, PgCert 2yrs PT or PgProfDev up to 2yrs PT	◆
Neuroscience (Integrative Neuroscience)	MSc by Research 1yr FT	◆
Oral Surgery	DClinDent 3yrs FT	■
Orthodontics	DClinDent 3yrs FT	■
Orthopaedic & Trauma Medicine	MSc by Research 1yr FT (2yrs PT UK/EU only)	◆
Paediatric Dentistry	DClinDent 3yrs FT	■
Paediatric Emergency Medicine	MSc 3yrs PT, PgDip 2yrs PT, PgCert 1yr PT	◆
Pathway Medicine	MSc by Research 1yr FT (2yrs PT UK/EU only)	◆
Patient Safety & Clinical Human Factors	MSc 3yrs PT, PgDip 2yrs PT, PgCert 1yr PT	◆
Population Health Sciences	MSc by Research 1yr FT (2yrs PT UK/EU only)	◆
Primary Care Ophthalmology	MSc 6yrs PT, PgDip 4yrs PT, PgCert 2yrs PT, or PgProfDev up to 2yrs PT	◆
Primary Dental Care	MSc 3yrs PT, PgDip 2yrs PT, PgCert 1yr PT	■
Prosthodontics	DClinDent 3yrs FT	■
Psychiatry	MSc by Research 1yr FT (2yrs PT UK/EU only)	◆
Public Health	MPH 1yr FT (2yrs PT UK/EU only)	■
Public Health	MPH 3yrs PT, PgDip 2yrs PT, PgCert 1yr PT, or PgProfDev up to 2yrs PT	■
Reproductive Sciences	MSc by Research 1yr FT	◆
Science Communication & Public Engagement	MSc 1yr FT	■
Science Communication & Public Engagement	MSc 3yrs PT, PgDip 2yrs PT, PgCert 1yr PT	■
Stem Cells & Translational Neurology	MSc 6yrs PT, PgDip 4yrs PT, PgCert/PgProfDev up to 2yrs PT	◆
Surgery	MSc by Research 1yr FT (2yrs PT UK/EU only)	◆
Surgical Sciences	MSc 3yrs PT	◆
Transfusion, Transplantation & Tissue Banking	MSc 3yrs PT (UK/EU only)	■
Trauma & Orthopaedics	ChM 2yrs PT	◆
Urology	ChM 2yrs PT	◆
Vascular & Endovascular Surgery	ChM 2-4yrs PT	◆

THE ROYAL (DICK) SCHOOL OF VETERINARY STUDIES www.ed.ac.uk/medicine-vet-medicine		ENGLISH LANGUAGE REQUIREMENTS (SEE PAGE 30)
Advanced Clinical Practice	MVetSci 6yrs PT, PgDip 4yrs PT, PgCert 2yrs PT	◆
Animal Biosciences	MSc 1yr FT	◆
Applied Animal Behaviour & Animal Welfare	MSc 1yr FT (2/3yrs PT UK/EU only)	◆
Applied Conservation Genetics with Wildlife Forensics	MSc 3-6yrs PT, PgDip 2-4yrs PT, PgCert 1-2yrs PT, or PgProfDev up to 2yrs PT	◆
Applied Poultry Science	MSc 3-6yrs PT, PgDip 2-4yrs PT, PgCert 1-2yrs PT, or PgProfDev up to 2yrs PT	◆
Clinical Animal Behaviour	MSc 6yrs PT, PgDip 4yrs PT, PgCert 2yrs PT	◆
Clinical Veterinary Sciences	MSc by Research 1yr FT (2yrs PT UK/EU only)	◆
Conservation Medicine	MVetSci 6yrs PT, PgDip 4yrs PT, PgCert 2yrs PT, or PgProfDev up to 2yrs PT	◆
Developmental Biology	MSc by Research 1yr FT (2yrs PT UK/EU only)	◆
Equine Science	MSc 6yrs PT, PgDip 4yrs PT, PgCert 2yrs PT, or PgProfDev up to 2yrs PT	◆
Food Safety	MSc 3-6yrs PT, PgDip 2-4yrs PT, PgCert/PgProfDev 1-2yrs PT	◆
Genetics & Genomics	MSc by Research 1yr FT (2yrs PT UK/EU only)	◆
Global Food Security & Nutrition	MSc 3-6yrs PT, PgDip 2-4yrs PT, PgCert 1-2yrs PT, or PgProfDev up to 2yrs PT	◆
Infection & Immunity	MSc by Research 1yr FT (2yrs PT UK/EU only)	◆
International Animal Welfare, Ethics & Law	MSc 6yrs PT, PgDip 4yrs PT, PgCert 2yrs PT, or PgProfDev up to 2 yrs PT	◆
One Health	MSc 6yrs PT, PgDip 4yrs PT, PgCert 2yrs PT, or PgProfDev up to 2yrs PT	◆
RCVS Certificate in Advanced Veterinary Practice	PgProfDev up to 10yrs PT	▼
Veterinary Anaesthesia & Analgesia	MSc 6yrs PT, PgDip 4yrs PT, PgCert 2yrs PT	◆
Veterinary Epidemiology	MSc 6yrs PT, PgDip 4yrs PT, PgCert 2yrs PT	◆
Veterinary Sciences	MVetSci by Research 1yr FT (2yrs PT UK/EU only)	◆

College of Science & Engineering

SCHOOL OF BIOLOGICAL SCIENCES www.ed.ac.uk/biology		ENGLISH LANGUAGE REQUIREMENTS (SEE PAGE 30)
Animal Breeding & Genetics	MSc 1yr FT (2yrs PT UK/EU only), PgDip 9mths FT	◆
Biochemistry	MSc 1yr FT, PgDip 9mths FT	◆
Biodiversity & Taxonomy of Plants	MSc 1yr FT, PgDip 9mths FT	◆
Bioinformatics	MSc 1yr FT, PgDip 9mths FT	◆
Biotechnology	MSc 1yr FT, PgDip 9mths FT	◆
Cell Biology	MSc by Research 1yr FT (2yrs PT UK/EU only)	◆
Drug Discovery & Protein Biotechnology	MSc 2-6 yrs PT, PgDip/PgProfDev 2-4 yrs PT, PgCert 1-2 yrs PT	◆
Drug Discovery & Translational Biology	MSc 1yr FT, PgDip 9mths FT	◆
Evolutionary Biology	MSc by Research 1yr FT (2yrs PT UK/EU only)	◆
Evolutionary Genetics	MSc 1yr FT (2yrs PT UK/EU only), PgDip 9mths FT	◆
Human Complex Trait Genetics	MSc 1yr FT (2yrs PT UK/EU only), PgDip 9mths FT	◆

Immunology & Infection Research	MSc by Research 1yr FT (2yrs PT UK/EU only)	◆
Molecular Plant Sciences	MSc by Research 1yr FT (2yrs PT UK/EU only)	◆
Next Generation Drug Discovery	MSc 2-6yrs PT, PgDip/PgProfDev 2-4yrs PT, PgCert 1-2yrs PT	◆
Quantitative Biology, Biochemistry & Biotechnology	MSc by Research 1yr FT (2yrs PT UK/EU only)	◆
Quantitative Genetics & Genome Analysis	MSc 1yr FT (2yrs PT UK/EU only), PgDip 9mths FT	◆
Stem Cell Research	MSc by Research 1yr FT (2yrs PT UK/EU only)	◆
Synthetic Biology & Biotechnology	MSc 1yr FT, PgDip 9mths FT	◆
Systems & Synthetic Biology	MSc 1yr FT, PgDip 9mths FT	◆

SCHOOL OF CHEMISTRY www.chem.ed.ac.uk		ENGLISH LANGUAGE REQUIREMENTS (SEE PAGE 30)
Chemistry	MSc by Research 1yr FT	◆
Materials Chemistry	MSc 1yr FT	◆
Medicinal & Biological Chemistry	MSc 1yr FT	◆

SCHOOL OF ENGINEERING www.eng.ed.ac.uk		ENGLISH LANGUAGE REQUIREMENTS (SEE PAGE 30)
Advanced Chemical Engineering	MSc 1yr FT	◆
Advanced Power Engineering	MSc 2yrs FT	◆
Bioengineering	MSc by Research 1yr FT (2yrs PT UK/EU only)	◆
Digital Communications	MSc by Research 1yr FT (2yrs PT UK/EU only)	◆
Electrical Power Engineering	MSc 1yr FT	◆
Electronics	MSc 1yr FT	◆
Energy Systems	MSc by Research 1yr FT (2yrs PT UK/EU only)	◆
Infrastructure & the Environment	MSc by Research 1yr FT (2yrs PT UK/EU only)	◆
Integrated Micro & Nano Systems	MSc by Research 1yr FT (2yrs PT UK/EU only)	◆
International Master of Science in Fire Safety Engineering	MSc 2yrs FT	▼
Materials & Processes	MSc by Research 1yr FT (2yrs PT UK/EU only)	◆

Taught doctorates		
Offshore Renewable Energy	EngD 4yrs FT	◆
Sensor & Imaging Systems	EngD 4yrs FT, MSc 1yr FT	◆
Signal Processing & Communications	MSc 1yr FT (2yrs PT UK/EU only)	◆
Structural & Fire Safety Engineering	MSc 1yr FT	◆
Sustainable Energy Systems	MSc 1yr FT, PgDip 9mths FT	◆

SCHOOL OF GEOSCIENCES www.ed.ac.uk/geosciences		ENGLISH LANGUAGE REQUIREMENTS (SEE PAGE 30)
Applied Geoscience (Geoenergy)	MSc 1yr FT (2-3yrs PT UK/EU only)	●
Carbon Innovation	PgCert 1yr PT	●
Carbon Management	MSc 1yr FT (2-3yrs PT UK/EU only)	●
Carbon Management	MSc 3yrs PT (2yrs accelerated), PgDip 2yrs PT (1yr accelerated)	●
Climate Change Management	PgCert 1yr PT	●
Earth Observation & Geoinformation Management	MSc 1yr FT (2-3yrs PT UK/EU only)	●
Ecological Economics	MSc 1yr FT (2-3yrs PT UK/EU only)	●
Energy, Society & Sustainability	MSc 1yr FT (2-3yrs PT UK/EU only)	●
Environment & Development	MSc 1yr FT (2-3yrs PT UK/EU only)	●
Environment, Culture & Society	MSc 1yr FT (2yrs PT UK/EU only)	●
Environmental Protection & Management	MSc 1yr FT (2-3yrs PT UK/EU only)	●
Environmental Sustainability	MSc 1yr FT (2-3yrs PT UK/EU only)	●
Food Security	MSc 1yr FT (2-3yrs PT UK/EU only)	●
Geographical Information Science/ GIS & Archaeology	MSc 1yr FT (2-3yrs PT UK/EU only)	●
Global Environment Challenges	PgCert 9mths-1yr FT (2yrs PT)	●
Human Geography	MSc by Research 1yr FT (2yrs PT UK/EU only)	●
Marine Systems & Policies	MSc 1yr FT (2-3yrs PT UK/EU only)	●

Online learning programmes

■ A highlighted row identifies an online learning programme

Palaeontology & Geobiology	MSc by Research 1yr FT (2yrs PT UK/EU only)	●
Soils & Sustainability	MSc 1yr FT (2-3yrs PT UK/EU only)	●
Sustainable Plant Health	MSc 1yr FT (2-3yrs PT UK/EU only)	●

SCHOOL OF INFORMATICS www.ed.ac.uk/informatics		ENGLISH LANGUAGE REQUIREMENTS (SEE PAGE 30)
Advanced Design Informatics	MSc 21mths FT	●
ANC: Machine Learning, Computational Neuroscience, Computational Biology	MSc by Research 1yr FT (2yrs PT UK/EU only)	◆
Artificial Intelligence	MSc 1yr FT (2-3yrs PT UK/EU only)	◆
CISA: Automated Reasoning, Agents, Data Intensive Research, Knowledge Management	MSc by Research 1yr FT (2yrs PT UK/EU only)	◆
Cognitive Science	MSc 1yr FT (2-3yrs PT UK/EU only)	◆
Computer Science	MSc 1yr FT (2-3yrs PT UK/EU only)	◆
Data Science	MSc 1yr FT (2-3yrs PT UK/EU only)	◆
Data Science, Technology & Innovation	MSc 6yrs PT, PgDip 4yrs PT, PgCert 2yrs PT or PgProfDev up to 2yrs PT	◆
Design Informatics	MSc 1yr FT	◆
High Performance Computing/HPC with Data Science	MSc 1yr FT (2-3yrs PT UK/EU only), PgDip 9mths FT	◆
ICSA: Computer Architecture, Compilation & Systems Software, Networks & Communication	MSc by Research 1yr FT (2yrs PT UK/EU only)	◆
ILCC: Language Processing, Speech Technology, Information Retrieval, Cognition	MSc by Research 1yr FT (2yrs PT UK/EU only)	◆
Informatics	MSc 1yr FT (2-3yrs PT UK/EU only)	◆
IPAB: Robotics, Computer Vision, Computer Graphics & Animation	MSc by Research 1yr FT (2yrs PT UK/EU only)	◆
LFCS: Theory & Foundations of Computer Science, Databases, Software & Systems Modelling	MSc by Research 1yr FT (2yrs PT UK/EU only)	◆

SCHOOL OF MATHEMATICS www.maths.ed.ac.uk		ENGLISH LANGUAGE REQUIREMENTS (SEE PAGE 30)
Computational Applied Mathematics	MSc 1yr FT (2yrs PT UK/EU only), PgDip 9 mths FT	◆
Computational Mathematical Finance	MSc 1yr FT (2yrs PT UK/EU only), PgDip 9 mths FT	◆
Financial Mathematics	MSc 1yr FT	▼
Financial Modelling & Optimization	MSc 1yr FT (2yrs PT UK/EU only), PgDip 9mths FT	◆
Operational Research/OR with Computational Optimization/OR with Risk	MSc 1yr FT (2yrs PT UK/EU only), PgDip 9mths FT	◆
Operational Research with Data Science	MSc 1yr FT (2-3yrs PT UK/EU only)	◆
Statistics & Operational Research	MSc 1yr FT (2yrs PT UK/EU only)	◆
Statistics with Data Science	MSc 1yr FT (2-3yrs PT UK/EU only)	◆

SCHOOL OF PHYSICS & ASTRONOMY www.ph.ed.ac.uk		ENGLISH LANGUAGE REQUIREMENTS (SEE PAGE 30)
Mathematical Physics	MSc 1yr FT	◆
Particle & Nuclear Physics	MSc 1yr FT	◆
Theoretical Physics	MSc 1yr FT	◆

Our Colleges and research areas

The University is divided into three Colleges, which collectively host 20 Schools. Such academic breadth and diversity make Edinburgh a vibrant and stimulating environment for postgraduate study, and the possibilities for interdisciplinary exchange and collaboration are vast. Each College offers a breadth of research opportunities. The following overview lists some of the areas in which we offer expert research supervision. Further information is available online.

College of Arts, Humanities & Social Sciences

This is our largest College, with more than 23,000 students and 3,700 staff working in the arts, law, humanities, education, business, health, and social sciences. We were ranked in the top 20 in several arts and humanities disciplines in the QS World University Rankings by Subject 2018 and also rated highly in the Research Excellence Framework (REF) 2014. In sociology, for example, we were ranked first in the UK by research power (*Research Fortnight* REF 2014).

Academic research

The College is home to more than 70 research centres and institutes:
www.ed.ac.uk/arts-humanities-soc-sci

Schools

The College hosts 11 diverse Schools and the Centre for Open Learning:

1. **Business**
www.business-school.ed.ac.uk
 2. **Divinity**
www.ed.ac.uk/divinity
 3. **Economics**
www.ed.ac.uk/economics
 4. **Edinburgh College of Art**
www.eca.ed.ac.uk
 5. **Education**
www.ed.ac.uk/education
 6. **Health in Social Science**
www.ed.ac.uk/health
 7. **History, Classics & Archaeology**
www.ed.ac.uk/hca
 8. **Law**
www.law.ed.ac.uk/pg
 9. **Literatures, Languages & Cultures**
www.ed.ac.uk/literatures-languages-cultures
 10. **Philosophy, Psychology & Language Sciences**
www.ed.ac.uk/ppls
 11. **Social & Political Science**
www.sps.ed.ac.uk/gradschool
- + **Centre for Open Learning**
www.ed.ac.uk/lifelong-learning

Research areas

- Accounting & Finance
- African Studies
- Archaeology
- Architecture
- Art
- Celtic & Scottish Studies
- Chinese
- Classics
- Clinical & Health Psychology
- Comparative Literature
- Counselling Studies
- Cultural Studies
- Design
- Economic & Social History
- Economics
- Education
- English Language
- English Literature
- Entrepreneurship & Innovation
- Ethics & Practical Theology
- European Theatre
- Film Studies
- French
- Gender & Culture
- German
- Global Health Policy
- Health in Social Science
- Hebrew & Old Testament Studies
- Hispanic Studies
- History
- History of Art
- History of Christianity
- International Development
- Islamic & Middle Eastern Studies
- Italian
- Japanese
- Landscape Architecture
- Law
- Linguistics
- Management Science & Business Economics
- Marketing
- Medieval Studies
- Music

- Organisation Studies
- New Testament & Christian Origins
- Nursing Studies
- Philosophy
- Politics & International Relations
- Psychology
- Public Health Policy
- Religious Studies
- Russian
- Sanskrit
- Scandinavian Studies
- Science & Religion
- Science & Technology Studies
- Scottish History
- Social Anthropology
- Social Policy
- Social Work
- Socio-cultural Studies
- Sociology
- South Asian Studies
- Strategy
- Systematic Theology
- Translation Studies
- World Christianity

PhD enquiries:

1. phd@business-school.ed.ac.uk
2. divinity.pg@ed.ac.uk
3. econpgr@ed.ac.uk
4. ecaresearchdegrees@ed.ac.uk
5. education.phd@ed.ac.uk
6. health@ed.ac.uk
7. gradschool.hca@ed.ac.uk
8. phd.law@ed.ac.uk
9. llc.pgadmissions@ed.ac.uk
10. pplspg@ed.ac.uk
11. pgadmissions.sps@ed.ac.uk

For more details on each of our Schools, order or download our School postgraduate prospectuses:
www.ed.ac.uk/prospectus-request

Our Colleges and research areas continued...

College of Medicine & Veterinary Medicine

The College of Medicine & Veterinary Medicine has more than 6,000 students and 3,000 staff and offers an extensive range of postgraduate programmes covering all aspects of medicine, including community health, molecular and clinical medicine and veterinary medicine. Following the Research Excellence Framework (REF) 2014, our vet school was ranked first in the UK and our medical school was among the UK top five, both ranked by research power (*Research Fortnight* REF 2014).

Schools

The College comprises two Schools, the Royal (Dick) School of Veterinary Studies and the Edinburgh Medical School, which is home to three Deaneries: Clinical Sciences, Biomedical Sciences, and Molecular, Genetic & Population Health Sciences.

Spanning both the veterinary and medical schools, the College's Graduate School provides an interdisciplinary support network for postgraduate students and staff.

Academic research

The College has five major research institutes, each home to various interdisciplinary research centres. www.ed.ac.uk/medicine-vet-medicine

Research areas

- Cancer
- Cardiovascular Science
- Child Life & Health
- Clinical Brain Sciences
- Clinical Education
- Cognitive & Neural Systems
- Dentistry
- Developmental Biology
- Genetics
- Genomics
- Geriatric Medicine
- Global Health
- Infection & Immunity
- Inflammation
- Integrative Physiology
- Medical Informatics
- Neurobiology
- Neuroscience
- Orthopaedic & Trauma Medicine
- Pathology
- Pathway Medicine
- Population Health Sciences
- Precision Medicine

- Psychiatry
- Regenerative Medicine
- Reproductive Health
- Respiratory Medicine
- Science Communication
- Surgery
- Tissue Repair
- Translational Neuroscience
- Veterinary Sciences & Training

PhD enquiries:

- www.ed.ac.uk/medicine-vet-medicine/postgraduate/enquiries

College of Science & Engineering

Science has been studied at Edinburgh since the University was established in 1583. With more than 9,000 students and 3,300 staff, we are one of the largest science and engineering groupings in the UK. Our expertise spans seven scientific areas, in which you'll find some of the world's best research. Following the Research Excellence Framework (REF) 2014, our submissions in biological sciences and physics were both ranked in the UK top five for research quality, and informatics was ranked first in the UK for research power (*Research Fortnight* REF 2014).

Schools

Teaching and research is arranged in seven Schools:

1. **Biological Sciences**
www.ed.ac.uk/biology
2. **Chemistry**
www.chem.ed.ac.uk
3. **Engineering**
www.eng.ed.ac.uk/postgraduate
4. **GeoSciences**
www.ed.ac.uk/geosciences
5. **Informatics**
www.ed.ac.uk/informatics
6. **Mathematics**
<http://msc.maths.ed.ac.uk>
7. **Physics & Astronomy**
www.ph.ed.ac.uk

Academic research

The College's 20 research centres stimulate an innovative programme of interdisciplinary research. www.ed.ac.uk/science-engineering

Research areas

- Algebra & Number Theory
- Analysis
- Applied & Computational Mathematics
- Astrophysics
- Atmospheric & Environmental Sciences
- Automated Reasoning, Agents, Data Intensive Research, Knowledge Management
- Bioengineering
- Cell Biology
- Chemistry
- Computer Architecture, Compilation & Systems Software, Networks & Communication
- Condensed Matter
- Data Science
- Digital Communications
- Energy Systems
- Evolutionary Biology
- Geographical Information Science
- Geography & Human Geography
- Geology & Geophysics
- Geometry & Topology
- High Performance Computing
- Immunology & Infection
- Infrastructure & the Environment
- Integrated Micro & Nano Systems
- Integrative Sensing & Measurement

- Language Processing & Speech Technology
- Machine Learning
- Materials & Processes
- Mathematical Analysis
- Mathematical Physics
- Molecular Plant Sciences
- Nuclear Physics
- Optical Medical Imaging with Healthcare Innovation & Entrepreneurship
- Optimization & Operational Research
- Particle Physics
- Pervasive Parallelism
- Probability & Stochastic Analysis
- Quantitative Biology, Biochemistry & Biotechnology
- Robotics & Autonomous Systems
- Robotics, Computer Vision, Computer Graphics & Animation
- Statistics
- Stem Cell Research
- Theory & Foundations of Computer Science

PhD enquiries:

1. gradbiol@ed.ac.uk
2. chemistry.gradschool@ed.ac.uk
3. enggradoffice@ed.ac.uk
4. pgrsupport@geos.ed.ac.uk
5. www.inf.ed.ac.uk/cgi-bin/iss/external-contact.cgi
6. pgrresearch@maths.ed.ac.uk
7. enquiries@ph.ed.ac.uk

A full list of research opportunities:
www.ed.ac.uk/postgraduate/degrees

Advice on finding a research supervisor:
www.ed.ac.uk/postgraduate/degree-guide/doctoral

Order or download a postgraduate prospectus:
www.ed.ac.uk/prospectus-request



Contact us

For all admissions enquiries

Please use our online Degree Finder to look up the programme you are interested in. The Degree Finder includes the most up-to-date information available and lists specific contact information for every programme we offer:
www.ed.ac.uk/postgraduate/degrees

College of Arts, Humanities & Social Sciences

Tel +44 (0)131 650 4086
 Email ahss.pgadmissions@ed.ac.uk
www.ed.ac.uk/humanities-soc-sci

College of Medicine & Veterinary Medicine

Tel +44 (0)131 242 6460
 Email mympg@ed.ac.uk
www.ed.ac.uk/medicine-vet-medicine

College of Science & Engineering

Tel +44 (0)131 650 5766
 Email sciengmail@ed.ac.uk
www.ed.ac.uk/science-engineering

For support services

Accommodation

Tel +44 (0)131 651 2042
 Email accommodation@ed.ac.uk
www.accom.ed.ac.uk

Student Disability Service

Tel +44 (0)131 650 6828
 Textphone +44 (0)131 650 9371
 Email disability.service@ed.ac.uk
www.ed.ac.uk/student-disability-service

Scholarships & Student Funding Services

www.ed.ac.uk/student-funding

– Scholarships and financial support

Tel +44 (0)131 651 4070
 Email studentfunding@ed.ac.uk

– Fees and student support

Tel +44 (0)131 650 2230
 Email fees@ed.ac.uk

For general enquiries

UK and EU students:

Student Recruitment and Admissions

Tel +44 (0)131 650 4360
 Email postgrad.enquiries@ed.ac.uk
www.ed.ac.uk/studying/postgraduate

International students:

Edinburgh Global

Tel +44 (0)131 650 4296
 Email global.enquiries@ed.ac.uk
www.global.ed.ac.uk

Our overseas representatives

The University has certified representatives in the following regions/countries:

Azerbaijan	Malaysia
Bahrain	Mexico
Brunei	Nigeria
Canada	Norway
Chile	Oman
China	Pakistan
Colombia	Peru
Dubai	Qatar
Egypt	Russian Federation
Ghana	Saudi Arabia
Hong Kong	Singapore
India	South Africa
Indonesia	South Korea
Iran	Taiwan
Iraq	Thailand
Japan	Turkey
Jordan	United Arab Emirates
Kenya	Vietnam
Kuwait	Zambia
Lebanon	Zimbabwe

Contact details for our representatives:
www.ed.ac.uk/international/representatives

Visit us

Our visits to you

If you are unable to visit the University, we attend events worldwide during the year giving you the opportunity to come and meet us and speak to us in person:
www.ed.ac.uk/postgraduate/meet-us

Chat online

Wherever you are in the world, we offer you opportunities to get in touch and speak directly to us about studying here.

We offer all postgraduate students monthly online information sessions. To find out more and see when the next session will be: www.ed.ac.uk/postgraduate/online-events

For international students, Edinburgh Global runs two online chat sessions each month. These are timed to give students in all timezones a chance to get involved. You can find out more and register online: www.ed.ac.uk/international/chat-to-us-online

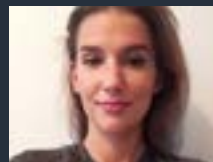
Visit us
 Register for our next
 Postgraduate Open Day:

**Wednesday 14
 November 2018**

[www.ed.ac.uk/
 postgraduate-open-day](http://www.ed.ac.uk/postgraduate-open-day)

Drawn to **EDINBURGH** by our world-class university

You are in good company. More than 39,500 of the world's brightest minds study here. Learn more at www.ed.ac.uk



All illustrations by:

Rosanna Corfe, BA (Hons) Illustration graduate.

Front cover:

An iconic view of Edinburgh from Calton Hill, looking past the Dugald Stewart monument towards the Balmoral Hotel and Edinburgh Castle.

#drawntoedinburgh

Visit us

**Our Postgraduate Open Day is on
Wednesday 14 November 2018. Register online:
www.ed.ac.uk/postgraduate-open-day**

Find a programme

**Our postgraduate opportunities
are listed on our Degree Finder:
www.ed.ac.uk/postgraduate/degrees**

Published by:

Communications and Marketing,
The University of Edinburgh

Designed by:

RRDCreative

Printed by:

ImageData Group

Photography by:

Paul Dodds
Edinburgh Inspiring Capital
Yao Hui
Trisha Malley and Ross Gillespie
Natalie Pilakouta
Douglas Robertson
Shutterstock
Whitedog Photography
Xinyuan Yang
Junyong Wang
Juli Grubben
Song Guo
Andrei Dumitriu
Mei-Lin Su

Biljana Tadic
Menglu Chen
Minh Tran Quoc
Rebeca Martinez
Hye Joon Lee
Paulius Puskunigis
Ruan Erasmus
Jingya Xun
Kaumal Baig
Eric Roseren
Jiayi Wu
Bo Vanbesien
Carlos Alegria
Jaarvi Gopalakrishnan
Carmen Lim Hui Jing

We have made every effort to ensure the accuracy of the information in this prospectus before going to print. However please check online for the most up-to-date information: www.ed.ac.uk

On 23 June 2016 the UK electorate voted in a national referendum to leave the European Union. At the time of going to print, there was no immediate material change known that would impact on applicants for 2019 entry. However we recommend that you check online for the latest information before you apply: www.ed.ac.uk/news/eu

The University's standard terms and conditions will form an essential part of any contract between the University of Edinburgh and any student offered a place here. Our full terms and conditions are available online: www.ed.ac.uk/student-recruitment/terms-conditions

© The University of Edinburgh 2018.

No part of this publication may be reproduced without written permission of the University.

The University of Edinburgh is a charitable body registered in Scotland, with registration number SC005336.

This publication is available online at www.ed.ac.uk/prospectus-request and can be made available in alternative formats on request. Please contact communications.office@ed.ac.uk or call +44 (0)131 650 2252.

