

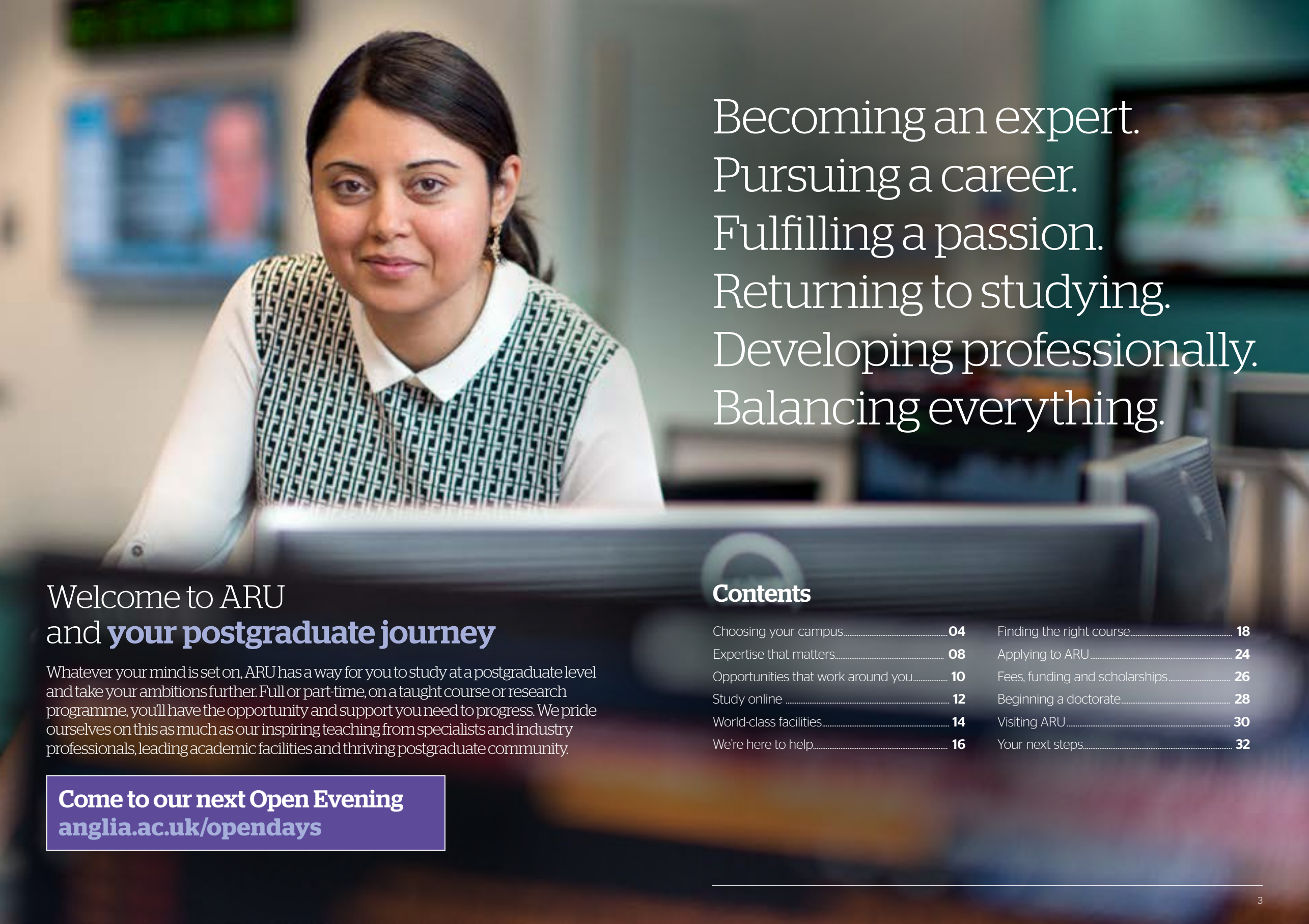


Anglia Ruskin  
University

# Your Postgraduate Guide 2019/20

[anglia.ac.uk/pg](http://anglia.ac.uk/pg)





Becoming an expert.  
Pursuing a career.  
Fulfilling a passion.  
Returning to studying.  
Developing professionally.  
Balancing everything.

## Welcome to ARU and **your postgraduate journey**

Whatever your mind is set on, ARU has a way for you to study at a postgraduate level and take your ambitions further. Full or part-time, on a taught course or research programme, you'll have the opportunity and support you need to progress. We pride ourselves on this as much as our inspiring teaching from specialists and industry professionals, leading academic facilities and thriving postgraduate community.

**Come to our next Open Evening**  
**[anglia.ac.uk/opendays](https://anglia.ac.uk/opendays)**

## Contents

Choosing your campus.....	04	Finding the right course.....	18
Expertise that matters.....	08	Applying to ARU.....	24
Opportunities that work around you.....	10	Fees, funding and scholarships.....	26
Study online .....	12	Beginning a doctorate.....	28
World-class facilities.....	14	Visiting ARU.....	30
We're here to help.....	16	Your next steps.....	32



# Choosing your campus



Our campuses are places where you'll be surrounded by a thriving postgraduate community of people who push and challenge you. We're based in four locations, each with their own unique identity and range of opportunities for you to choose from.

## Cambridge campus

Base yourself in Cambridge, a world-renowned centre of learning with an eclectic social scene. Victorian and modern buildings combine on campus, which has a diverse, dynamic feel in keeping with the city. We've been bringing creativity and fresh perspectives to the historic city since 1858, when our Cambridge School of Art first opened. From our campus, it's only a five-minute walk to the city centre.

### Subjects available in Cambridge:

- Animal & Environmental Sciences
- Applied Sciences
- Art & Design
- Computing, Gaming & Digital Technology
- Crime, Investigation & Policing
- Education
- English, Writing & Publishing
- Film & Media
- Health & Medical Professions
- History & Social Studies
- Law
- Management
- MBA
- Music & Drama Therapies
- Nursing & Clinical Practice
- Psychology
- Social Work
- Sport



Ruskin Building,  
Cambridge

[anglia.ac.uk/cambridge](https://anglia.ac.uk/cambridge)





Bloomberg Financial Markets Lab, Chelmsford

**Chelmsford campus**

You'll find our riverside campus in the University and Innovation Quarter of Chelmsford (one of the UK's newest cities with a fascinating history), in Essex. On campus, there are striking modern buildings and high-tech facilities. The vibrant city centre is a short stroll away and you couldn't be better connected. It's just 35 minutes by train to London and Chelmsford station has rail links across the county.

**Subjects available in Chelmsford:**

- Accounting & Finance
- Architecture, Building & Construction
- Business & HR
- Education
- Engineering
- Health & Medical Professions
- Management
- Nursing & Clinical Practice
- Social Work
- Supply Chain Management



Chelmsford campus

[anglia.ac.uk/chelmsford](http://anglia.ac.uk/chelmsford)

**ARU in Peterborough**

Be a big part of our smaller university community at our Guild House campus in Peterborough. Dedicated to healthcare, this is where we train many of the region's nurses and healthcare professionals. Meet people like you, committed to helping others, and enjoy city life around you.

[anglia.ac.uk/peterborough](http://anglia.ac.uk/peterborough)

**Huntingdon**

Students on our Family Therapy and Systemic Practice course (PG Cert) are taught in nearby Huntingdon, at the Child and Adolescent Mental Health Services Newtown Centre.

[anglia.ac.uk/family-therapy](http://anglia.ac.uk/family-therapy)



Mock Hospital Ward, Guild House, Peterborough

ARU London

**ARU London**

Our partnership with ARU London gives you the option to study for an ARU-validated Masters degree while working and living in our capital city. The cultural diversity of the students and the international dimension of the course content adds an invaluable element to the experience.

[lca.anglia.ac.uk](http://lca.anglia.ac.uk)



**Distance learning**

**Juggling work, childcare commitments or both?**

If you'll find it difficult to get to campus regularly, then one of our distance-learning options could be ideal for you. You'll have a choice of subjects, while still benefiting from the expertise of our tutors. You'll also have access to all the same university facilities as our other students at a time that's best for you.

See page 12.



# Expertise that matters

Our expert lecturers are as passionate about their students' success as their subject matter. We're committed to creating a university experience that will engage and empower you.

You'll benefit from talented teaching staff who are respected in your field of interest, including industry professionals with strong business links for real-world insights and contacts. You'll have current thinking and the confidence to challenge ideas and, crucially, yourself. Alongside subject expertise, you'll sharpen your analytical, communication and team-working skills. These are some of the reasons why our students are highly satisfied with the teaching around them.

## Top 250 European universities

### Our students' view

Students praised our high level of teaching and excellent learning facilities in the inaugural Europe Teaching Rankings, published by the Times Higher Education magazine (July 2018). This placed ARU in the top 250 European universities.



**We encourage students to really grab the opportunity; to work at getting everything they can out of their peers and the staff."**

**Tom Serby, Course Leader**  
LLM International Business and Commercial Law

Over  
**720**  
respected academics

**"...very high levels of student satisfaction with teaching, assessment and feedback, and academic support."**

TEF Panel  
Teaching Excellence Framework 2017

**TEF Silver** Teaching Excellence Framework

## Career support

We know that your decision to undertake a postgraduate degree will have formed part of your career plans. You might want to pursue a Masters as a way of getting an essential qualification to enter a career of your choice, or to give you the opportunity for promotion or more rapid advancement in your career? Perhaps you have chosen to do a Doctorate for the same reasons? Or to follow a research or academic career path? Whatever the reason, it's important to think broadly about your options - having a postgraduate degree is a real opportunity both for advancement and for taking new career pathways.

You may know what you want to do next and have already been looking at opportunities in your chosen industry. However support is always on hand if you need it. Our Employability Service will help you develop the skills, knowledge, experience and professional qualities you need to achieve your ambitions. They might introduce you to prospects that you hadn't considered before!

[anglia.ac.uk/employability](http://anglia.ac.uk/employability)



# Opportunities that work around you

You have a choice of postgraduate study options, with the expertise, guidance and resources you need to succeed. You can delve deeper into your subject, explore your profession further or work towards your career ambitions.

## Masters degrees

These courses normally combine taught modules with a dissertation or major project. They are usually a mixture of compulsory core modules and optional modules based on your own interests. Most courses take 12 months to complete full-time. We offer the following types of award: Master of Arts (MA), Master of Business Administration (MBA), Master of Law (LLM), Master of Science (MSc) and Master of Surgery.

See page 18 for  
taught postgraduate  
courses at ARU.

## Postgraduate diplomas and certificates

A Postgraduate Diploma (PG Dip) or Postgraduate Certificate (PG Cert) are generally a similar level of study to a Masters degree, but without the final project or dissertation. These are ideal for graduates who want to update their knowledge in a specialist field or who are returning to study after a break in education. A PG Dip is more extensive than a PG Cert. Both are available in many different subject areas, with some specific to certain careers, such as the Legal Practice Course (LPC).

## Degree apprenticeships

A degree apprenticeship is a new route into higher education. It's ideal if you're already working and looking for higher-level training with the support of your employer.

As a professional apprentice, you'll achieve a degree alongside real work experience while being paid throughout. And there are no tuition fees as these are paid by your employer and the Government.

For more information about our degree apprenticeships and how to apply, visit: [anglia.ac.uk/degreeapprenticeships](https://anglia.ac.uk/degreeapprenticeships)

## Flexibility

We understand you have commitments now, and postgraduate study at ARU is designed with this in mind. Many of our courses are offered on a full- or part-time basis, with the choice of September or January start dates, giving you the flexibility you need from the outset.

## Postgraduate research programmes

At ARU, we have a thriving, ambitious research community. Rather than a taught course, postgraduate students can undertake a Doctor or Master of Philosophy (PhD or MPhil), a Doctor of Medicine by Research (MD(Res)), a PhD by Published Work, or a Professional Doctorate.

Learn more on page 28.

## Continuing professional development (CPD)

You can also study further through CPD. Our short courses are designed to give you a professional edge with leading knowledge and enhanced skills, and make learning an active, rather than reactive, activity. You can study on campus or by distance learning, with content tailored to your work needs. We offer a wide range of CPD courses at [anglia.ac.uk/cpd](https://anglia.ac.uk/cpd)





# Study online

Whether you're looking to change the direction of your career, gain a promotion, get back to work, or you're simply eager to keep your brain active, distance learning is the ideal solution. Studying online (also known as distance learning) gives you the flexibility to work through your course in your own time and around your other commitments.

### Supporting you along the way

If you're worried about the remoteness of distance learning, think again. Our knowledgeable staff will be on hand at every stage of your online course to support you. From our experienced course advisors through to our internationally acclaimed team of professors, lecturers and tutors, who'll instruct and guide you as you work through your course.

We'll also help you to get started by talking you through our Learning Management System. It's where you'll access module guides, teaching notes and supporting documents, as well as discussion boards and collaborative learning activities.

### Our postgraduate distance learning courses:

- MSc Advanced Midwifery Practice
- MA Applied Linguistics and TESOL
- MSc Biomedical Science
- MSc Data Centre Leadership and Management
- MBA Educational Leadership and Management
- MSc Global Military Veteran and Family Studies
- MSc Healthcare Management
- MA Higher Education
- PG Cert Learning and Teaching (Higher Education)
- MSc Magnetic Resonance Imaging
- Master of Business Administration (MBA)
- MSc Medical and Healthcare Education
- PG Cert Medical and Healthcare Education
- MSc Project Management
- MSc Women's and Children's Health



Despite studying online in a different part of the world with a different time zone, this was never apparent. Whenever I needed support and advice from ARU it was always swift and very helpful.”

**Tara Luckie,**  
MSc Healthcare Management

Find out more at  
**[distancelearning.anglia.ac.uk](https://distancelearning.anglia.ac.uk)**

# World-class facilities

Our leading resources and latest technologies enhance subject knowledge, professional practices and industry expertise in new ways. Here are a few highlights.



## Science Centre Cambridge campus

A new £45m centre with a 200-station biosciences laboratory and 300-seat lecture theatre adapted for science. Students and researchers in psychology, animal biology, biomedical science and forensics have the most up-to-date facilities to develop their careers in science, technology, engineering, mathematics, and medical science (STEMM).

[anglia.ac.uk/science-centre](http://anglia.ac.uk/science-centre)

Biosciences Laboratory, Cambridge

## Business hubs

### Cambridge and Chelmsford campuses

We're home to two fantastic business hubs: School of Economics, Finance and Law, and School of Management, both offering the most advanced learning technologies. Highlights include our Bloomberg Financial Markets Lab in Chelmsford, a trade and investment platform used by our Accounting and Finance students. While Law students will gain invaluable experience by working on real life cases at our newly established Law Clinics in both Cambridge and Chelmsford.

[anglia.ac.uk/business-and-law](http://anglia.ac.uk/business-and-law)



Bloomberg Financial Markets Lab, Chelmsford



Young Street, Cambridge

## Healthcare hub

### Young Street, Cambridge

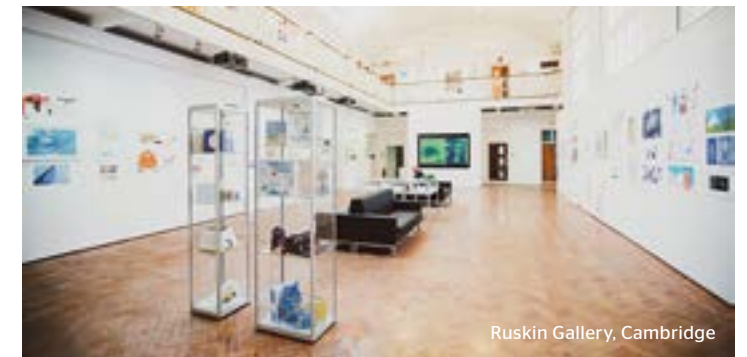
A dedicated healthcare community with clinical skills labs. Facilities include mock hospital wards, a child nursing and midwifery ward, and the Jerome Booth Music Therapy Centre. The latter is the largest university-based music therapy centre in the UK, providing clinical arts-based therapies for private individuals, local groups, charities and social services.

## Cambridge School of Art

### Cambridge campus

A wide range of facilities to inspire creativity, including a fully equipped, three camera TV studio, a new Computer Games Art Base, and several Mac and PC computer suites.

[anglia.ac.uk/csa](http://anglia.ac.uk/csa)



Ruskin Gallery, Cambridge

## SuperLab

### Chelmsford campus

We have an impressive SuperLab for students specialising in Medical Science and Pharmaceutical Science. This leading facility includes our high-end Pharmaceutical Research Laboratory.

[anglia.ac.uk/superlab](http://anglia.ac.uk/superlab)

## The Mumford Theatre and Ruskin Gallery

### Cambridge campus

Two inspiring, centrally-located spaces that showcase our students' creativity and talents to the public.

[anglia.ac.uk/mumford](http://anglia.ac.uk/mumford)

[anglia.ac.uk/ruskingallery](http://anglia.ac.uk/ruskingallery)



MedBic building, Chelmsford

## The Business Innovation Centre for Medical and Advanced Engineering (MedBIC)

### Chelmsford campus

MedBIC is home to advanced engineering laboratories used by students and researchers from a range of fields. The specialist centre also supports medical technology businesses that are just starting out.

[medbic.com](http://medbic.com)



# We're here to help



We appreciate postgraduate students have wider commitments. To help make the most of your time at ARU, we've developed a support network. Full or part-time, you'll soon find yourself part of a close-knit, postgraduate community, with help just around the corner.

## Your personal tutor

You'll be allocated a personal tutor as soon as you start. This is your first point of contact for questions about your studies and clear guidance to reach your potential. Your tutor will follow your progress and be able to help you at any point during your studies.

## Your study skills

Balancing life, work and study can be challenging. Good time management makes a real difference. This is one of many dedicated study skills sessions you can join.

## Advice centres

At the iCentre on each ARU campus, friendly teams are on hand to cover all aspects of student life. Just ask.

## Counselling and wellbeing

Available to all ARU students, this free, confidential service supports mental health and wellbeing. There are also online support programmes to guide anyone experiencing stress or anxiety at any time.

## Support for disabled students

Our Study Support Service offers information, advice and specialist support to students with disabilities, including mental health difficulties, ongoing medical conditions and specific learning difficulties such as dyslexia. We hold drop-in sessions for current students, where we can discuss anything in confidence.

## Find out more

To get in touch with our Student Services Team, head to [anglia.ac.uk/studentsupport](https://anglia.ac.uk/studentsupport)

## Welcoming international students

Our dedicated International Office will support you throughout your journey at ARU, from the application process through to graduation – and help make your time with us as happy and rewarding as possible.

[anglia.ac.uk/internationalsupport](https://anglia.ac.uk/internationalsupport)



Anglia Ruskin's very friendly, very warm and very encouraging. I feel like I've grown on a personal level as well as academically."

Yasmin Yildizgoren  
MSc Marketing

## Enjoying university socially

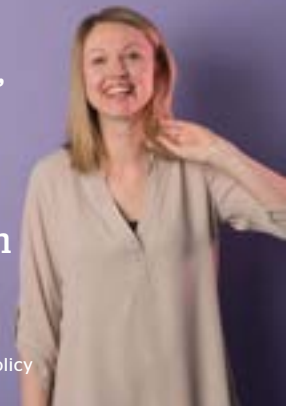
### Take a break now and then

ARU's active Students' Union is just as much for postgraduates as undergraduates. That includes all sorts of social and sporting events, and hundreds of societies. Beyond the campus, you'll also have the city on your doorstep.



As a mum to a small child, I may not be the typical student, but I've found I have been able to get more involved than I even thought I would."

Beth Warmington  
MSc International Social Welfare and Social Policy





# Finding the right course

Our portfolio of taught postgraduate courses is broad-ranging. We're proud of the variety we can offer because it means you'll be studying your subject in an energetic and diverse environment. Some of our courses are professionally accredited, meaning that they are centred on current industry knowledge that will help you to stand out when you graduate.



Construction Management, Chelmsford

Focus on your area of interest at ARU

FT Full-time course      PT Part-time course

Subject group	Courses	Study type	Campus	Accreditation
Animal & Environmental Sciences	Animal Behaviour: Applications for Conservation MSc	FT or PT	Cambridge	
	Applied Wildlife Conservation MSc	FT or PT	Cambridge	
	Sustainability MSc	Blended Learning	Cambridge and Distance Learning	
Applied Sciences	Applied Bioscience MSc	FT or PT	Cambridge	
	Biomedical Science MSc	Distance Learning		IMBS
	Forensic Science MSc	FT or PT	Cambridge	CSFS
	Pharmaceutical Science MSc	FT or PT	Chelmsford	
	Sport and Exercise Science MSc	FT or PT	Cambridge	
Architecture, Building & Construction	Construction Management MSc	FT or PT	Chelmsford	CIOB, RICS
	Construction Project Management MSc	FT or PT	Chelmsford	CIOB, RICS
	Project Management MSc	FT or PT	Chelmsford, Distance Learning	APM
	Town Planning MSc	FT or PT	Chelmsford	RTPI
Art & Design	Children's Book Illustration MA	FT or PT	Cambridge	
	Computer Games Development (Art) MA	FT or PT	Cambridge	
	Fine Art MA	FT or PT	Cambridge	
	Graphic Design and Typography MA	FT or PT	Cambridge	
	Illustration and Book Arts MA	FT or PT	Cambridge	
	Printmaking MA	FT or PT	Cambridge	
Computing, Gaming & Digital Technology	Artificial Intelligence and Big Data MSc	FT	Cambridge	
	Artificial Intelligence with Cyber Security MSc	FT	Cambridge	
	Computer Games Development (Art) MA	FT or PT	Cambridge	
	Computer Games Development (Computing) MSc	FT or PT	Cambridge	
	Computer Science MSc	FT	Cambridge	
	Cyber Security MSc	FT or PT	Cambridge	
	Intelligent Systems and Machine Learning MSc	FT	Cambridge	
	Information and Communication Technology (Conversion) MSc	FT or PT	Cambridge	
Crime, Investigation & Policing	Contemporary Policing MA	Blended Learning		
	Criminology MA	FT or PT	Cambridge	
	Forensic Science MSc	FT or PT	Cambridge	CSFS

Found your course? Now read more at [anglia.ac.uk/pg](http://anglia.ac.uk/pg)



		FT Full-time course	PT Part-time course		
Subject group	Courses	Study type	Campus	Accreditation	
<b>Education</b>	Early Childhood Education MA	FT or PT	Chelmsford		
	Education MA	FT or PT	Chelmsford		
	Educational Leadership and Management MBA	Distance Learning			
	Higher Education MA	FT or PT	Cambridge, Distance Learning		
	Learning and Teaching (Higher Education) PG Cert	PT	Cambridge, Chelmsford, Distance Learning	UKPSF	
	Medical and Healthcare Education MSc	PT	Cambridge, Chelmsford, Distance Learning	HEA	
	Simulation in Medical and Healthcare Education PG Cert	PT	Chelmsford		
	Special Educational Needs and Disability MA	FT or PT	Chelmsford		
	Student Affairs in Higher Education MA	FT or PT	Cambridge		
<b>Engineering</b>	Additive Manufacturing MSc	FT or PT	Chelmsford		
	Civil Engineering MSc	FT or PT	Chelmsford	ICE, Institution of Structural Engineers, CHIT, IHE	
	Electronic and Electrical Engineering MSc	FT	Chelmsford	IET	
	Engineering Management MSc	FT or PT	Chelmsford		
	International Project Management MSc	FT or PT	ARU London		
	Mechanical Engineering MSc	FT or PT	Chelmsford	IMEchE	
	Project Management MSc	FT or PT	Chelmsford, Distance Learning	APM	
<b>English, Writing &amp; Publishing</b>	Applied Linguistics and TESOL MA	FT or PT	Cambridge, Distance Learning		
	Children's Literature MA	FT or PT	Blended Learning*		
	Creative Writing and Publishing MA	FT or PT	Cambridge		
	Creative Writing MA	FT or PT	Cambridge		
	English Literature MA	FT or PT	Cambridge		
	Intercultural Communication MA	FT or PT	Cambridge		
	Publishing MA	FT or PT	Cambridge		
	Science Fiction and Fantasy MA	FT or PT	Blended Learning*		
<b>Film &amp; Media</b>	Film and Television Production MA	FT or PT	Cambridge		

\*Much of your study time will be spent online and in preparatory reading, with two intensive weeks of on-campus attendance for full-time students and one intensive week per year for part-time students.

**Found your course?** Now read more at [anglia.ac.uk/pg](http://anglia.ac.uk/pg)

		FT Full-time course	PT Part-time course		
Subject group	Courses	Study type	Campus	Accreditation	
<b>Health &amp; Medical Professions</b>	Applied Bioscience MSc	FT or PT	Cambridge		
	Biomedical Science MSc	Distance Learning		IMBS	
	Healthcare Management MBA	FT or PT	Chelmsford		
	Healthcare Management MSc	Distance Learning			
	Magnetic Resonance Imaging MSc	Distance Learning			
	Medical and Healthcare Education MSc	PT	Cambridge, Chelmsford, Distance Learning		
	Medical Law and Ethics LLM	PT	Chelmsford		
	Pharmaceutical Science MSc	FT or PT	Chelmsford		
	Physician Associate MSc	FT	Chelmsford		
	Public Health MSc	FT or PT	Chelmsford		
	Simulation in Medical and Healthcare Education PG Cert	PT	Chelmsford		
	Surgical Care Practice MSc	PT	Chelmsford	RCS	
	Urology Master of Surgery (MCh)	PT	Cambridge, Distance Learning		
<b>History &amp; Social Studies</b>	History MA	FT or PT	Cambridge		
	Intercultural Communication MA	FT or PT	Cambridge		
	International Relations MA	FT or PT	Cambridge		
	International Social Welfare and Social Policy MSc	FT or PT	Cambridge		
	Social Work MA	FT	Cambridge, Chelmsford		
	Sociology MA	FT or PT	Cambridge		
<b>Law</b>	Digital Economy LLM	FT	Cambridge		
	International Business Law LLM	FT	Cambridge		
	International Commercial Law LLM	FT	Cambridge		
	International Law LLM	FT	Cambridge		
	Legal Practice (Top-Up) LLM	FT or PT	Cambridge		
	Legal Practice Course PG Dip	FT	Cambridge		
	Medical Law and Ethics LLM	PT	Chelmsford		
<b>Management</b>	Accounting and Finance MSc	FT	Chelmsford		
	CIPD Human Resource Management (Day Release) PG Dip	PT	Cambridge, University Centre Peterborough*	CIPD	
	Construction Management MSc	FT or PT	Chelmsford	CIOB, RICS	

\*If you choose to study this ARU-validated degree at University Centre Peterborough, apply directly at: [ucp.ac.uk](http://ucp.ac.uk)

**Found your course?** Now read more at [anglia.ac.uk/pg](http://anglia.ac.uk/pg)



		FT Full-time course	PT Part-time course	
Subject group	Courses	Study type	Campus	Accreditation
Management (cont.)	Construction Project Management MSc	FT or PT	Chelmsford	CIOB, RICS
	Educational Leadership & Management MBA	Distance Learning		
	Engineering Management MSc	FT or PT	Chelmsford	
	Healthcare Management MBA	FT or PT	Chelmsford	
	Healthcare Management MSc	Distance Learning		
	Human Resource Management (Top-Up) MA	PT	Chelmsford	CIPD
	Human Resource Management MA	FT	Cambridge	CIPD
	International Business MSc	FT	Cambridge	
	International Hospitality and Tourism Management MSc	FT or PT	Cambridge	
	Management MSc	FT	Cambridge	
	Marketing MSc	FT or PT	Cambridge	
	Project Management MSc	FT or PT	Chelmsford, Distance Learning	APM
	Supply Chain Management MSc	FT	Chelmsford	CIPS
MBA	Educational Leadership and Management MBA	Distance Learning		
	Healthcare Management MBA	FT or PT	Chelmsford	
	MBA	FT	Cambridge	CMI
	MBA	Distance Learning		
	MBA with Placement	FT	Cambridge	CMI
	MBA - International	FT or PT	ARU London	
	MBA - Healthcare	FT or PT	ARU London	
	Senior Leader Masters Degree Apprenticeship - MBA	PT (Work-based)	Cambridge, Blended Learning	CMI
Music & Drama Therapies	Dramatherapy MA	FT	Cambridge	HCPC
	Music Therapy MA	FT	Cambridge	HCPC
Nursing & Clinical Practice	Advanced Midwifery Practice MSc	FT or PT	Chelmsford, Distance Learning	
	Advanced Practice (Clinical) MSc	PT	Cambridge, Chelmsford, Peterborough	RCN
	Approved Mental Health Professional PG Cert	PT	Cambridge, Peterborough	
	Child and Adolescent Mental Wellbeing MSc	FT or PT	Chelmsford	

Found your course? Now read more at [anglia.ac.uk/pg](https://anglia.ac.uk/pg)

		FT Full-time course	PT Part-time course	
Subject group	Courses	Study type	Campus	Accreditation
Nursing & Clinical Practice (cont.)	Children and Young People MSc	FT or PT	Cambridge	
	Clinical Nursing MSc	FT or PT	Cambridge, Chelmsford, Peterborough	
	Community Specialist Practitioner (District Nursing) PG Dip	FT	Cambridge, Chelmsford	NMC
	Critical Care PG Cert	PT	Cambridge, Chelmsford	
	Emergency Care PG Cert	PT	Chelmsford	
	Family Therapy and Systemic Practice PG Cert	PT	Huntingdon	
	Global Military Veteran and Family Studies MSc	Distance Learning		
	Mental Health MSc	FT or PT	Chelmsford	
	Nursing - Adult MSc	FT	Cambridge	NMC
	Physician Associate MSc	FT	Chelmsford	
	Public Health MSc	FT or PT	Chelmsford	
	Specialist Community Public Health Nursing (Health Visiting or School Nursing) PG Dip	FT	Cambridge	NMC
	Surgical Care Practice MSc	PT	Chelmsford	RCS
Psychology	Applied Positive Psychology MSc	FT or PT	Cambridge and France*	
	Clinical Child Psychology MSc	FT or PT	Cambridge	
	Cognitive and Clinical Neuroscience MSc	FT or PT	Cambridge	
	Consumer Psychology MSc	FT or PT	Cambridge	
	Foundations in Clinical Psychology MSc	FT or PT	Cambridge	
	Psychology (Conversion) MSc**	FT	Cambridge	
	Research Methods in Psychology MSc	FT or PT	Cambridge	
Social Work	Approved Mental Health Professional PG Cert	PT	Cambridge, Peterborough	
	Child and Adolescent Mental Wellbeing MSc	FT or PT	Chelmsford	
	Children and Young People MSc	FT or PT	Cambridge	
	Family Therapy and Systemic Practice PG Cert	PT	Huntingdon	
	Global Military Veteran and Family Studies MSc	Distance Learning		
	Mental Health MSc	FT or PT	Chelmsford	
Sport	Social Work MA	FT	Cambridge, Chelmsford	
Sport	Sport and Exercise Science MSc	FT or PT	Cambridge	

\*This course is taught via blended learning, a mixture of both Distance Learning and face-to-face delivery in Cambridge and France. Teaching in France takes place just outside of Paris, a short train journey to the city centre.

\*\*Subject to validation

Found your course? Now read more at [anglia.ac.uk/pg](https://anglia.ac.uk/pg)



# Applying to ARU



We aim to make your application process as straightforward as possible, supporting you along the way. The information below explains the next steps according to the type of student you are.

## UK/EU student?

You can apply for a postgraduate course (both full-time and part-time) as soon as the application link is showing on the relevant course page on our website.

Visit [anglia.ac.uk/pg](https://anglia.ac.uk/pg) to find your course, check the next start date (September or January) and view the entry requirements.

Please bear in mind we usually require up to four weeks to consider applications, so it's best to apply at least a month before your preferred start date.

## Qualifications

For most postgraduate courses, you'll need a qualification or experience equivalent to a UK honours degree, usually in a relevant subject area. Courses do vary, however, so please check the relevant course page for detailed requirements. When assessing your application, we'll consider:

- whether your qualifications meet our entry requirements
- your subject-specific abilities
- your broader personal, professional and educational experience.

If you are from the EU, please visit our Europe admissions page for more information: [anglia.ac.uk/eu](https://anglia.ac.uk/eu)

## International students

Entry requirements will depend on your qualifications and the course you apply for. You can find specific requirements for your country on our website at [anglia.ac.uk/internationaladmissions](https://anglia.ac.uk/internationaladmissions)

Next, visit the relevant course page at [anglia.ac.uk/pg](https://anglia.ac.uk/pg) and click the 'Apply Online' button (top right of the page). If English is not your first language, you'll need to be able to show you have the required level of English language. We offer our own English Language Proficiency Test. See [anglia.ac.uk/els](https://anglia.ac.uk/els)

## Postgraduate research programmes

Once you've found an ARU academic supervisor who may be a suitable match for your topic, get in touch. We'll organise a meeting between you to begin your journey. We can also help fill out your application form and support you through the process, including guiding your research proposal and the supporting documents you submit for approval. More at [anglia.ac.uk/discover-research](https://anglia.ac.uk/discover-research)

## ARU London

If you're interested in studying with ARU London, apply directly at [lca.anglia.ac.uk](https://lca.anglia.ac.uk)

## Got a question?

Take a look at our frequently asked questions page at [anglia.ac.uk/applyfaqs](https://anglia.ac.uk/applyfaqs)

Or call us on:

UK: **01245 686868**

Overseas: **+44 1245 686868**

## Our team is ready to help

Monday to Thursday, 8.30am-5pm  
Friday, 8.30am-4.30pm (UK time).



# Fees, funding and scholarships

Before you pursue a Masters degree, you need to know how much it's likely to cost. Beyond the government's postgraduate loan (PGL), we offer several different types of scholarships that can help to support you during your time with us. Read on to find out what's available and check your eligibility on our website: [anglia.ac.uk/pgfunding](https://anglia.ac.uk/pgfunding)

## Full-time fees

The cost of Masters degrees, Postgraduate Certificates and Diplomas vary depending on subject, and reflect the quantity of contact time, resources and equipment needed. For UK and EU students, Masters typically range from £5,100 to £12,900 per year, while fees for international students (classed as coming from outside of the EU) range from £12,600 to £14,500 per year. You can find out the cost of your course by checking the fees and funding section on your course page at [anglia.ac.uk/pg](https://anglia.ac.uk/pg)

## Part-time fees

Fees for part-time postgraduate students are linked to the full-time fee rate and what you pay depends on the number of course credits you study each year. You can find the part-time fees on our online course pages.

## International tuition fees and scholarships

For information about international fees, scholarships and other ways to fund your course, head to [anglia.ac.uk/internationalfees](https://anglia.ac.uk/internationalfees)

## Paying your fees

You won't need to pay fees until you've accepted an offer to study with us. Fees can be paid in three instalments through our online payment system, or by a bank transfer.

## Postgraduate loans for UK and EU students

The UK government offers a postgraduate loan (PGL) of up to £10,609 for new Masters students. This is not means-tested and can be used to help pay for your fees or living costs. If you're eligible, you can still receive scholarships, bursaries or other funding you have applied for.

Check to see if you're eligible at [gov.uk/masters-loan/eligibility](https://gov.uk/masters-loan/eligibility)

## Other sources of funding

You may find the Alternative Guide to Postgraduate Funding useful. It encourages you to think outside the box about funding opportunities, including especially charities, which often make awards to current and prospective graduate students.

[www.postgraduate-funding.com](https://www.postgraduate-funding.com)

## Funding and scholarships

We offer several alumni, course-specific and sports scholarships for our postgraduate courses.

For a full list and eligibility criteria, go to [anglia.ac.uk/scholarships](https://anglia.ac.uk/scholarships)

## Here to help

For advice about funding and scholarships, email [moneyadvice@anglia.ac.uk](mailto:moneyadvice@anglia.ac.uk) or call **01245 686700**





# Beginning a doctorate

Interested in turning an idea, challenge or area of interest into a significant piece of work? You should consider a postgraduate research programme.

At Anglia Ruskin, you'll be joining an academic community that's passionate about research, within a university that champions bold thinking. Our Doctoral School was created to provide focused support for all our postgraduate research students.

We offer the following types of doctorates:

## Doctor of Philosophy (PhD)

PhD study at ARU is offered across a range of subject areas. You'll establish your research question or hypothesis, and then formulate a framework for undertaking your research. Your first step is to identify an area where significant new knowledge or understanding can be generated.

## Master of Philosophy (MPhil)

This standalone Masters-level award allows you to undertake a research programme, typically two years full-time or three years part-time. Most PhD students start their programme as a registered MPhil, transferring to a PhD after 18-24 months.

## Doctor of Medicine by Research (MD (Res))

This research degree is open to qualified medical doctors and dentists. You'll undertake an in-depth research study that will relate specifically to your own medical practice and contribute to an existing body of knowledge. Once completed, you'll be

recognised as an expert in your field, with a proven ability to conduct original research.

## Practice-based Doctorates

These doctorates include practice or theorised practice as a key part of your research. Creative work must be accompanied by a written thesis or commentary.

## Professional Doctorate (DProf)

You can gain this practitioners' qualification while researching and solving complex problems in your own workplace. Research focuses on your own professional practice, bringing together professional and academic knowledge.

We offer DProf programmes in the areas of:

- Business and Management
- Education
- Health and Social Care
- Policing
- Practical Theology
- Science and Engineering

## Postgraduate Doctoral Loans

The UK government offers a postgraduate doctoral loan of up to £25,000 for your PhD. This is not means-tested and can be used to pay for your fees and living costs. Conditions apply. Further details at [gov.uk/doctoral-loan](https://gov.uk/doctoral-loan)

## Next steps

Visit our website to explore our current research and the academic staff who are leading these areas. Once you find an ARU academic supervisor who may be the right match for your topic, get in touch. We'll organise a meeting between you. Go to [anglia.ac.uk/discover-research](https://anglia.ac.uk/discover-research)

## Learn more

Explore what we're researching and meet the people, purpose and possibilities behind their work.

Go to [think.aru.ac.uk](https://think.aru.ac.uk)

# Visiting ARU



See ARU for yourself. Discover the benefits of joining our postgraduate community. Speak to your future tutors about their expertise and industry experience. Find out how we can help you make postgraduate study happen. Simply book to attend. We look forward to meeting you.

## Tour our campus

At an Open Evening, you'll be able to look around our campus and facilities with one of our postgraduate student ambassadors.

## Apply in person

Like what you see? You can make your application on the day with the help of our staff. We may even be able to make you an offer there and then.

## Meet your lecturers

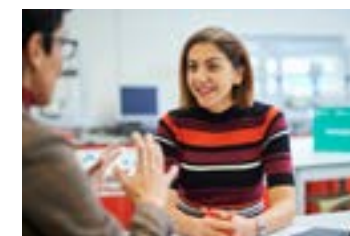
Our teaching staff are always excited to meet new postgraduate candidates and ready to answer your questions about our taught courses and research programmes. Come along and get inspired by the work we do here.

## Live abroad?

We know it's not always possible to make it to an event, so our International Team travels to education fairs worldwide. You may be able to meet us in your own country before you apply.

More at [anglia.ac.uk/meet-us](https://anglia.ac.uk/meet-us)

Book to attend an Open Evening  
[anglia.ac.uk/opensdays](https://anglia.ac.uk/opensdays)





# Your next steps

Our website contains all the information you need to decide whether Anglia Ruskin is the place for you. Search our online course catalogue for full course information, including accreditation, modules and assessment methods, entry requirements and fees. You can even take a virtual tour of our campuses. It's all at your fingertips at [anglia.ac.uk/pg](https://anglia.ac.uk/pg)

## Ask us a question

If you've got a general enquiry, you can call us in the UK or overseas on these numbers:

UK: **01245 686868**

Overseas: **+441245 686868**

Or fill in our contact form and we'll get in touch with you:

[anglia.ac.uk/contact](https://anglia.ac.uk/contact)

Our enquiry teams are on hand to help Monday to Thursday, 8.30am to 5pm, and Friday, 8.30 to 4.30pm UK time.

## Follow us on Social Media



Want to know all the latest from ARU at any time? Follow us on social media and get a real feel for the ARU community. You can also ask us a question on any of our official social media channels.



**LinkedIn:**  
Anglia Ruskin  
University



**Facebook:**  
@angliaruskin



**Twitter:**  
@angliaruskin



**Instagram:**  
angliaruskin



**YouTube:**  
UniAngliaRuskin

# Important information

Anglia Ruskin University holds/processes personal data and sensitive personal data on all applicants and enrolled students in computer and paper-based administrative systems. All such data is held/processed in accordance with the provisions of applicable Data Protection legislation.

For further information on the holding and processing of personal data, please view our Privacy Policy at [anglia.ac.uk/privacy](https://anglia.ac.uk/privacy)

## Notice to potential students

This information document may include links to external websites run by other organisations. Anglia Ruskin University is not responsible for the privacy practices of these other websites, so you should read their privacy policies carefully. Anglia Ruskin University Higher Education Corporation is an exempt charity. Registered Office: Bishop Hall Lane, Chelmsford, Essex CM1 1SQ.

This prospectus describes the courses and awards offered by Anglia Ruskin University. Anglia Ruskin University's website contains further information about each course and any updates. The online course catalogue can be viewed here:

[anglia.ac.uk/pg](https://anglia.ac.uk/pg)

Should you become a student of Anglia Ruskin University, you will receive additional documents detailing the teaching, examination, assessment and other education services offered by Anglia Ruskin University. In particular, you will be invited to be bound by the Rules, Regulations and Procedures for Students, a copy of which can be obtained from the Secretary and Clerk's Office or at [anglia.ac.uk/keydocuments](https://anglia.ac.uk/keydocuments)

## Before you apply to Anglia Ruskin University

Anglia Ruskin University endeavours to take all reasonable steps to provide the education services in the manner set out in this prospectus and in those additional documents. It does not, however, guarantee the provision of such services. Should industrial action or other events beyond the control of Anglia Ruskin University interfere with its ability to provide education services, Anglia Ruskin University undertakes to use all reasonable endeavours to minimise the resulting disruption to those services.

Should you become a student at Anglia Ruskin University, an offer letter will be sent to you and this shall constitute a term of any contract between you and Anglia Ruskin University. Any offer of a place made to you by Anglia Ruskin University is made on the basis that in accepting such an offer you signify your consent and agreement to abide by the Rules, Regulations and Procedures for Students as a term of any such contract. All course information in this prospectus is correct at time of going to print. Considerable care has been taken in the preparation of this prospectus to ensure its accuracy at the time of going to press.

If, however, you feel that it is inaccurate or misleading, you should write, stating the detail of your complaint, to: The Secretary and Clerk to the University, Anglia Ruskin University, Bishop Hall Lane, Chelmsford, Essex CM1 1SQ.



**Yasmin Yildizgoren**  
MSc Marketing



**“For me, it’s all about getting key knowledge in the industry, really developing my skills, and engaging academically as well as practically.”**

**Yasmin Yildizgoren**  
MSc Marketing

Find your  
postgraduate course at  
**[anglia.ac.uk/pg](https://anglia.ac.uk/pg)**