



Edge Hill
University

Introduction

Hello and many thanks for your interest in the role of Facilities Management Director here at Edge Hill University.

My name is Steve Igoe. I'm proud to be the Deputy Vice-Chancellor of Edge Hill and it's in my line that the FM Director will report once appointed.

We are seeking to recruit an exceptional FM professional to join our diverse senior leadership team. The right individual will have substantial strategic capability and vision, and a track record in delivering a high quality, customer focussed FM service.

We would expect you to be able to demonstrate the delivery of these attributes in your current role, in particular focussing on how you use relationships to support and advise colleagues to successfully deliver their business objectives, in line with the culture and values of the organisation.

Every colleague working at Edge Hill has an opportunity to add value to what we do and to enhance the quality of the student experience. It will be your job working with others to ensure that we can enable and achieve on our ambitions.

Edge Hill is a tremendous success and a great place to work. If you want to be part of an ambitious and exciting University, to really add value to what we do and to be a major contributor to the achievements of the University in the future then this could well be the role for you.

If you wish to discuss this opportunity further then you can contact me by email on Steve.Igoe@edgehill.ac.uk or alternatively by phone on **01695 584619**.

With best wishes and good luck,

Steve



Steve Igoe
Deputy Vice-Chancellor
Edge Hill University



Edge Hill University

About the University

Edge Hill University is based on an attractive, award-winning 160-acre campus in Lancashire, close to Liverpool and Manchester. The institution has been providing higher education for more than 130 years, with a mission to create opportunity from knowledge. The University is an academic community comprising more than 10,000 full time undergraduate and postgraduate students and a further 6,000 on part time and professional development programmes.

Edge Hill is ranked as Gold in the **Teaching Excellence Framework (TEF)**, the government's evaluation of excellence in teaching quality, learning environment and student outcomes. Gold is the highest possible TEF rating, indicating that the institution is "of the highest quality found in the UK" and is "delivering consistently outstanding teaching, learning and outcomes for its students." Only one in five UK higher education institutions are ranked as Gold.

Edge Hill is one of the select few universities to have held the coveted UK **University of the Year** title, awarded by *Times Higher Education* (2014/15). Recent successes include being ranked in the top 10 for **teaching** by *The Times/Sunday Times Good University Guide* 2017, top in the North West for **student experience** (*Times Higher Education* 2017), and top in the UK for **student accommodation** in the 2017 WhatUni Awards.

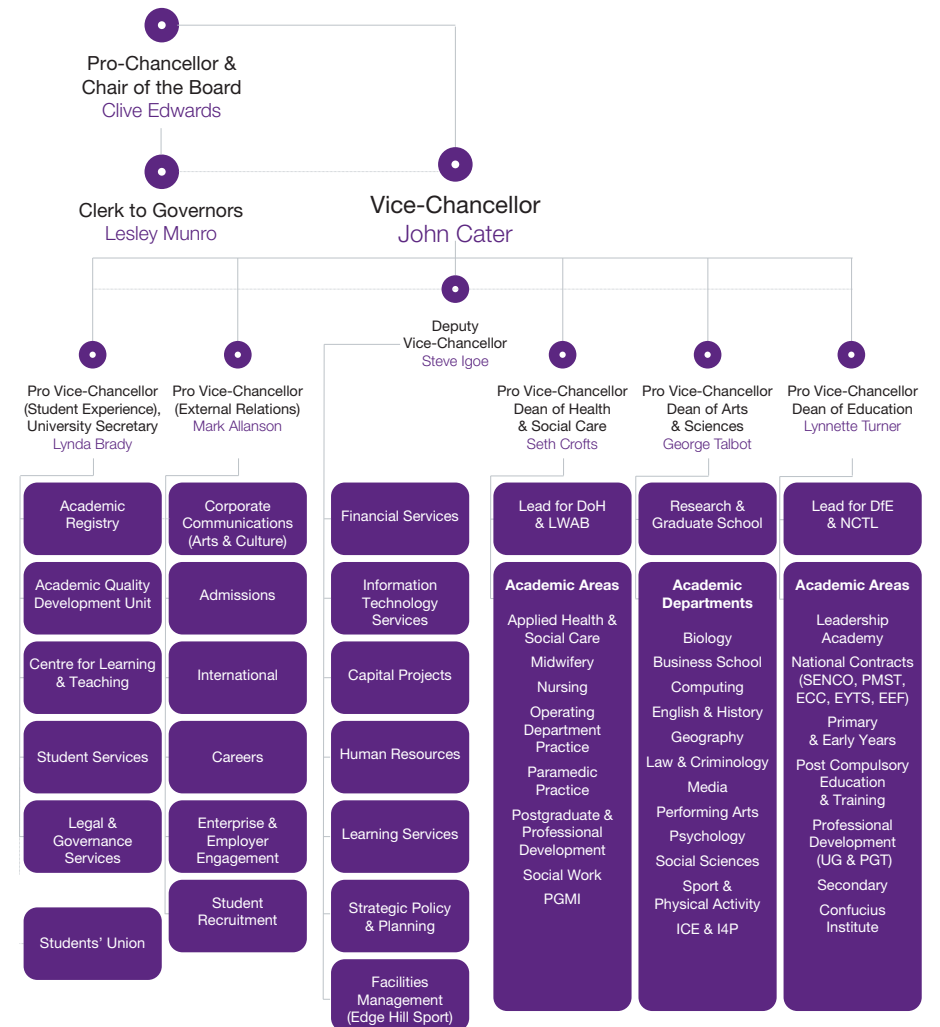
In our peer group of the 60+ modern, diversified universities we are top in England in the WhatUni 2017 **University of the Year** rankings, as well as in the **Courses and Lecturers** and **Facilities** categories. Edge Hill also comes top in the UK for **student support** (WhatUni 2017) and **social mobility** (CentreForum, 2014).

When Edge Hill was awarded University of the Year title for 2014/15, *Times Higher Education* described it as *"a great success story...an institution that improves and impresses year after year"*. The award recognised its outstanding achievements in student satisfaction, staff engagement, graduate employment and innovation as well as its strengthening research profile, investment and growth. It also celebrated Edge Hill University's distinct role in *"transforming lives"* – reflecting a distinctive philosophy of creating opportunity from excellence.



About the University

University Organisation chart



Award-Winning Workplace

Edge Hill University has 3,647 staff working across three Faculties and a range of professional support services. Most staff are based on our 160-acre campus in Ormskirk with others based in Manchester and the US.

The University has been ranked **Best University Workplace** (*Times Higher Education* 2015), judged **Best UK Employer** (European Business Awards 2016) and Highly Commended for **Workplace of the Year** in *Times Higher Education* Leadership and Management Awards 2017. Edge Hill was awarded an Athena SWAN Institutional Bronze Award on 1st October 2015.

"Edge Hill University is an environment in which you can flourish and achieve your full potential. Our award-winning Ormskirk campus is an excellent place to work, and colleagues receive competitive salaries, with high quality pension provision and excellent holidays alongside a wide range of staff social and well-being benefits" – John Cater, Vice-Chancellor



Region

Located in the heart of the North West, Edge Hill University is situated close to the thriving market town of Ormskirk and the vibrant cities of Liverpool and Manchester.

The seaside resort of Southport is nearby and the University is only a short distance from stunning areas of unspoilt natural beauty, such as the sand dunes and pinewoods of Formby.

Described as 'the best the best place in England to bring up a family' (by *The Telegraph*, reporting on The Family Friendliness Index), the region has excellent schools, nurseries and green spaces.



Region

Facilities Management

Facilities Management (FM) at Edge Hill is the largest support department at the University employing over 320 members of staff. We provide hard, soft and commercial FM services to almost 12,000 full time equivalent (FTE) students and 2,000 FTE members of staff in addition to a significant number of visitors, partners and members of the public using the 160-acre campus.

Our award-winning campus boasts over 140,000m² of built environment, including 2800 residential bedrooms. Our multi-award-winning FM team is recognised within and beyond the higher education sector, for our customer-centric culture and our direct positive contribution to the core business – the attraction, recruitment and retention of students.

The University's FM department is made up of three distinct service areas:

Operational Services

- Campus Support
- Site Services
- Property Services
- Catering Services

Edge Hill Sport

- Facilities
- University Sport
- Recreational Sport

Service Development & Assurance

- Customer Services
- Professional Services
- Finance
- Operational Risk & Environment

As custodians of our beautiful campus, FM have an explicit responsibility to ensure that the estate remains fully compliant with statutory legislation, and that we strive to exceed sector quality standards and benchmarks whenever possible – continually aiming to achieve best practice.

Facilities Management

Facts and Figures

Key Performance Indicators

Year Ending 31 July	2017	2016	2015	2014	2013
Total income in £'000	127,365	128,127	123,935	115,376	108,541
Surplus for re-investment in £'000	20,254	21,637	21,247	17,899	17,693
Cash generated by activities in £'000	31,711	31,699	30,165	22,760	25,990
Cash for investment £'000	49,803	38,073	29,029	21,127	32,359
Financial worth of the University in £'000	194,749	171,240	162,796	147,316	108,347
Applications for University FT UG programmes (1)	18,035	19,767	19,133	18,931	19,296
Total number of students of the University (2)	15,220	15,543	16,170	16,750	18,483
Percentage of staff who rate the University as a good or excellent employer (3)	N/A	93%	94%	92%	91%
Employee turnover (4)	6.8%	6.6%	5.6%	6.9%	8.8%
Level of University staff absence	2.9%	3.6%	3.2%	3.4%	3.4%

(1) Based on UCAS statistics

(2) Based on HESA Student Record

(3) From the University's independently scrutinised Staff Survey is undertaken every two years with effect from 2016. The next Staff Survey will take place in 2018.

(4) Based on establishment employees who left for any reason

Edge Hill University
St Helens Road
Ormskirk
Lancashire
L39 4QP
United Kingdom



edgehill.ac.uk



facebook.com/edgehilluniversity



twitter.com/edgehill



instagram.com/edgehilluniversity
