

**UWE
Bristol**

University
of the
West of
England

INTERNATIONAL COLLEGE PROSPECTUS 2017–18

KAPLAN

INTERNATIONAL
PATHWAYS

A photograph of three students sitting on a stone ledge by a canal in Bristol. The students are looking towards the right, away from the camera. The background shows a canal with buildings and trees. The sky is blue with some clouds.

Your pathway starts here

www.uwe.ac.uk/internationalcollege

Contents

About us

- 4 Why choose UWE Bristol?
- 6 UWE Bristol: aim higher
- 8 Enjoy campus living
- 10 The International College
- 12 Our courses
- 14 Teaching that transforms
- 16 Support at every step of the way
- 18 Complete care

Living in Bristol

- 22 A city like no other
- 24 Your new home
- 26 Meet an International College student

Undergraduate courses

- 28 Your pathway to a Bachelors degree
- 30 Choose your Bachelors degree

Foundation Certificate in

- 32 Business, Law and Social Sciences
- 34 Science and Engineering

International Year One in

- 36 Business
- 38 Engineering

Postgraduate courses

- 40 Your pathway to a Masters degree
- 42 Choose your Masters degree

Pre-Master's in

- 44 Business, Law and Social Sciences
- 46 Science and Engineering

Application information

- 48 Next steps
- 49 Application form



Why choose UWE Bristol?

Studying at UWE Bristol is about much more than just gaining a qualification – it's an opportunity to get yourself ready and equipped for your career, and your future.

UWE Bristol is recognised locally and internationally for:

- an award-winning careers' website for international students (Winner of Outstanding International Student Strategy, The Times Higher Awards 2015)
- 96% of graduates going in to employment or further study 6 months after graduation (Destinations of Leavers From Higher Education Survey, published 2016)
- ranking 6th in the UK for Architecture (The Guardian University Guide 2017)
- it's location in Bristol, which was named one of the UK's best cities to live in (The Sunday Times 2015)
- £50m investment in a new Business and Law Learning Centre, opening in Spring 2017.



AIM

higher with a
university that shares
your ambition

Studying a university pathway course at UWE Bristol's International College can help you progress to a world-class Bachelors or Masters degree at one of the UK's most popular new universities – UWE Bristol.

Innovative partnerships

UWE Bristol (University of the West of England, Bristol) enjoys dynamic and engaging collaborations with partners such as Hewlett Packard and the BBC. Students at the University have also been involved in designing the Bloodhound supersonic car, which aims to set the world land speed record of 1,000 miles per hour.

Teaching excellence

5 outstanding lecturers at UWE Bristol have received National Teaching Fellowship Scheme awards, and the University has consistently scored 'excellent' in the teaching assessments carried out by the Quality Assurance Agency. In the National Student Survey (2015), 15 of UWE Bristol's degree courses are rated 100% for student satisfaction.

Great graduate prospects

Nearly 96% of UWE Bristol's graduates are in work or further study 6 months after graduating (Destinations of Leavers from Higher Education Survey 2016). It is easy to see why UWE Bristol was named as Best University for Careers / Employability Service at the 2014 National Undergraduate Employability Awards.

Fantastic learning facilities

World-class facilities help deliver the very best learning experiences for UWE Bristol's students. Specialist flight and driving simulators, a crime scene house, mock courtrooms, a Bloomberg financial trading room and the largest robotics laboratory in the UK – these are just a few of the high-tech learning facilities at UWE Bristol.

International community

UWE Bristol has students from over 140 countries, and dedicated International Students' Officers for extra support. As part of the international student community, you can also take advantage of the University's award-winning careers website that can connect you with employers from all over the world.

Sports and social scene

With more than 180 student clubs and societies, and a £5.5 million state-of-the-art sports centre, UWE Bristol is an ideal place to make friends and share new experiences. Students enjoy access to state-of-the-art fitness facilities and can join sports clubs and societies, for everything from climbing to badminton, and economics to fashion.

"At UWE Bristol, we offer an excellent experience for students from around the world, within a vibrant, healthy and sustainable learning environment. Your student experience and preparation for life after graduation are our top priorities. We invite you to join us and become part of our lifelong, worldwide community."

Professor Steve West

Vice-Chancellor, UWE Bristol

Want to know more?

www.uwe.ac.uk



Outstanding International Student Strategy

UWE Bristol won the Outstanding International Student Strategy award at the Times Higher Education Awards 2015. The award was in recognition of the success of GradLink UK, a free web-based service developed at the University, which enables overseas employers to link with international students and graduates.



ENJOY

campus-based living
with everything
close at hand

During your pathway course at UWE Bristol's International College, you will enjoy the same benefits and resources open to UWE Bristol students.

Frenchay campus

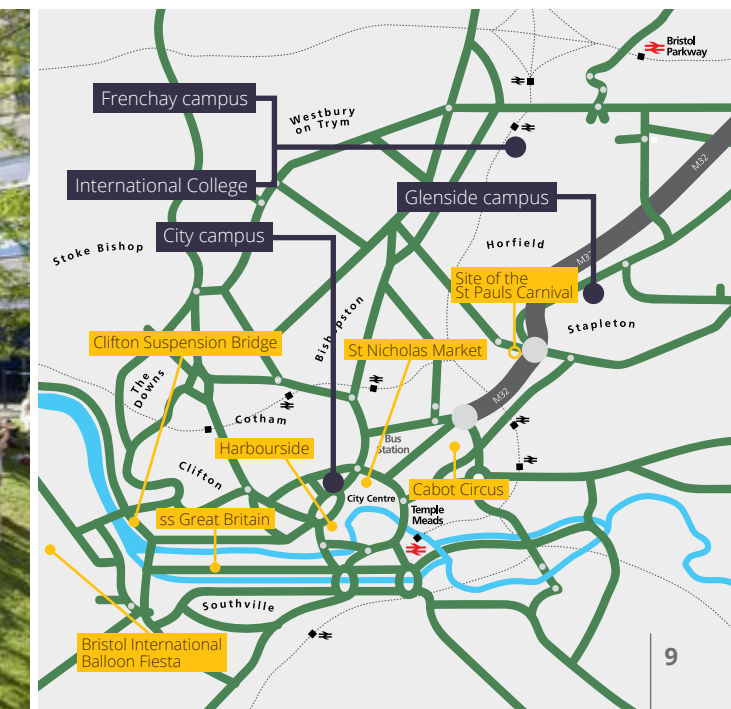
The International College is based at UWE Bristol's main campus, Frenchay. The campus is just 4 miles north of the city centre. With a range of facilities on offer including libraries, lecture theatres, the Centre for Sport and the Students' Union, Frenchay is the largest and busiest of UWE Bristol's campuses.

Glenside campus

Just 3 miles north of the city centre, Glenside is close to the popular student area of Fishponds, with a choice of shops, cafés and bars.

City campus

Located in Bristol's city centre, the City campus is made up of Bower Ashton campus, Spike Island, Arnolfini and Watershed. This campus offers a range of inspiring learning environments and studio spaces. Students here can develop their professional practice, work together and network.



The International College

Prepare for university study at UWE Bristol's International College, and take your first steps towards a degree at UWE Bristol and a successful future career.

Guaranteed entry

You are guaranteed a place at UWE Bristol to study a Bachelors or Masters degree when you successfully pass your pathway course with the required results and good attendance.

University lifestyle

You will study your pathway course at the International College, based at UWE Bristol's Frenchay campus, and live in comfortable on-site student accommodation.

Multiple start dates

Our courses start at various times throughout the year, so you can start your studies at a time that best suits you. Plus, our range of available course options will fit many different English levels.

Fantastic support

You will benefit from a range of other dedicated services, including one-on-one academic support, a special Welcome Week to help you settle in, and a varied programme of exciting social activities.



"We are delighted that you are considering studying with us. I am confident that during your time at the College, you will develop the skills and knowledge required to be successful at university and beyond. And of course you'll make plenty of friends along the way! Welcome to Bristol, and I wish you the very best of luck in your studies."

Martin Jones (above)

College Director, UWE Bristol's International College

Fantastic facilities

As an International College student, you will enjoy access to many of the top-quality facilities available on the Frenchay campus:

Libraries

An impressive collection of over half a million books and e-books, as well as group study areas and quiet zone facilities that are run by helpful, friendly and knowledgeable staff.

Computer labs

Every university faculty and library has a well-equipped computer lab. There is also a 24-hour lab located on Frenchay campus for students who want to work all hours of the day.

Centre for Sport

The £5.5 million innovative sport complex offers a huge range of services, activities and classes to all students.

Students' Union (SU)

The brand-new 3,000-square metre SU plays a vital role in UWE life, bringing together student societies, sports and entertainment.

Want to know more?

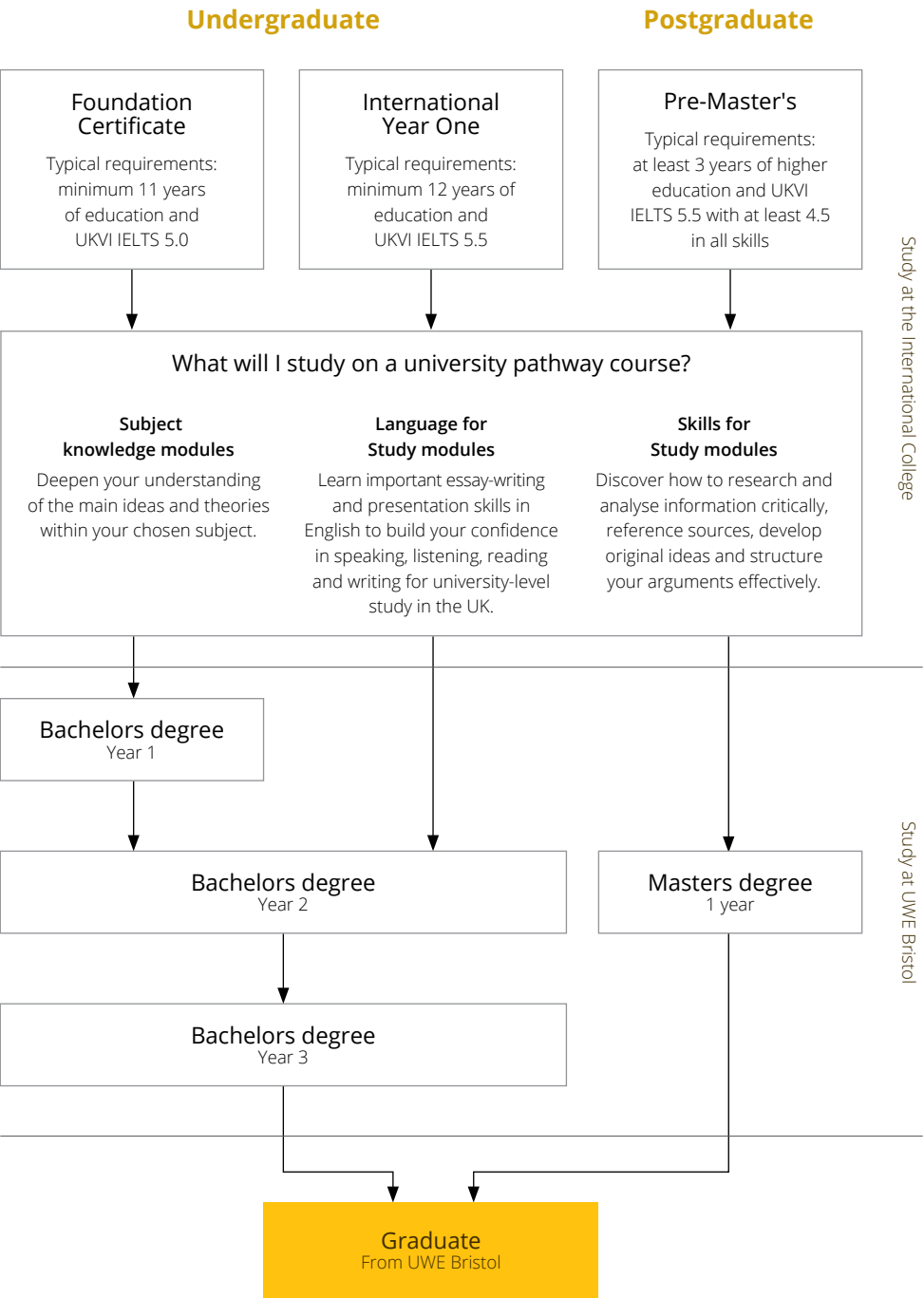
www.uwe.ac.uk/internationalcollege



67 | number of student nationalities at the International College

Our courses

We offer a range of university pathway courses at the International College. These offer progression to a wide variety of Bachelors and Masters degrees at UWE Bristol.



TEACHING that transforms

At the International College, our dedicated, experienced teachers prepare students for success, not just on their course and university degree, but in their future career.

Learn from the best

At the International College, you will benefit from high standards of teaching and academic support. Our teachers have a wealth of experience from both academic and professional backgrounds, and they work hard to ensure you reach the academic and English language standards required by the University. With our intensive teaching, our students start their chosen degrees confident and ready to succeed.

Academic support

Our classes help students to build confidence and create close relationships with teachers and classmates. Regular one-to-one meetings with your personal tutor will give you the chance to ask any questions, and develop effective study habits. Meetings are student-led, allowing you to decide what to discuss. In addition, assessments and reports will help you track your progress and prepare you for university.

First-class resources

As a student at the International College, you will receive a University ID card giving you access to the University's world-class facilities. These include libraries, IT suites and well-equipped study areas.

315 | years of combined teaching experience achieved by International College teachers

"I love seeing the 'lightbulb' moments when students grasp challenging ideas. It's great to see how these connect up as students start to think as engineers, scientists, mathematicians and move towards their chosen careers."

James Nevell

Science and Engineering Coordinator,
UWE Bristol's International College

Want to know more?

www.uwe.ac.uk/internationalcollege

SUPPORT

at every step
of the way

Our friendly and experienced staff will fully support you while you prepare for university. With us by your side, you will have the confidence to embrace new experiences and exciting opportunities.

Assisting you straight away

Our support starts even before you arrive in Bristol. Contact our advisers and we will be happy to answer all your questions, big or small. You will also receive a pre-arrival guide, full of useful information and helpful advice for your journey.

Helping you arrive

From the time you land in the UK, we are there for you. We can pick you up from the airport, take you to your accommodation, and ensure that you feel safe, comfortable and welcome in your new surroundings.

Welcome Week

Before your classes start, you'll enjoy Welcome Week, where we show you around the College and University facilities. You'll meet the teachers and staff who will be educating and supporting you. We'll take you through the process of setting up a bank account and registering with a doctor, and will help you settle into life in Bristol.

Progressing to your degree

As you approach the end of your pathway course, we'll give you guidance on how to obtain your new visa for your UWE Bristol degree.



"The College helped me adjust to living in the UK. It's very different from my home country, as the culture here is very open and the people are extremely friendly. I have been involved in some of the College activities. For instance, I took part in a photo competition, taking pictures of the city. I didn't win, but it was still very fun!"

Anadil from Oman (above, left)
Foundation Certificate in Business, Law and Social Sciences

Getting involved

We organise frequent social activities to help you further enjoy your time with us and fully experience student life. These may include:

- trips to nearby towns and cities
- restaurant and cinema outings
- cultural weeks
- food parties
- karaoke
- sports
- visits to historical sites.



92%

of students who successfully completed their International College preparation course in 2015 received an unconditional offer from UWE Bristol

Complete care

From scholarships to back-up plans, we have everything covered to ensure you are on the best possible path to career success.

Scholarships

We know how much time and effort goes into your studies, and that a high-quality education is a significant and important investment in your future. To make this incredible opportunity of studying abroad more affordable, we offer 2 types of scholarships.

Pathway scholarships

We offer partial tuition scholarships to qualifying students at the International College. These are awarded based on your academic achievements in your home country.

Progression scholarships

We also work with the University to reward our best-performing students. If you finish your pathway course with excellent grades and attendance, you could qualify for a partial tuition scholarship for your UWE Bristol degree. It's our way of recognising your hard work.

University Placement Service

The University Placement Service (UPS) at the International College gives you extra peace of mind when preparing for your degree. If you pass your pathway course, but don't achieve the required results to progress to UWE Bristol, the UPS team is there to support your progression to another UK university. We guarantee a university place to all students who pass their course.

Part of the Kaplan family

UWE Bristol's International College is part of Kaplan International Pathways (previously Kaplan International Colleges). We are proud to be transforming the futures of international students through close partnerships with world-leading universities. Visit www.kaplanpathways.partners to find out more.



Insure your studies

We offer all students the option to purchase EduTravel: a comprehensive travel, emergency health and academic insurance policy. EduTravel has been specially designed for international students, so you can be sure you're getting a policy that's ideal for your studies abroad.

In safe hands

EduTravel is provided by Endsleigh, one of the leading UK insurance specialists, who have been insuring students for over 50 years. Endsleigh is the only insurance provider recommended by the National Union of Students, so you'll be covered by true industry experts.

Automatic cover

We want to make sure you're fully covered when studying abroad. That's why you must have travel and emergency medical insurance for the full duration of your degree preparation course. To make it easy for you, we'll automatically add EduTravel to your study package. If you wish to organise your own insurance, you'll need to show us proof of alternative comprehensive cover when you accept your offer to study with us and before you begin your trip to study with Kaplan, so we can confirm your place.

For more information about EduTravel, such as what's included, where you're covered, eligibility criteria and limitations, visit: www.kaplanpathways.com/insurance

University of the West of England, Bristol's International College is an appointed representative of Endsleigh Insurance Services Limited which is authorised and regulated by the Financial Conduct Authority. University of West of England, Bristol's International College is a trading name of Kaplan UWE Limited.

Quality Assurance Agency

Kaplan International Colleges – University of the West of England, Bristol's International College received a commendable outcome from the monitoring visit by the Quality Assurance Agency for Higher Education (QAA) in 2015 and submitted an annual return in May 2016 that demonstrates that we are continuing to maintain academic standards and enhance the quality of student learning opportunities and information about learning opportunities. The report can be found on the QAA website under Kaplan International Colleges at: www.qaa.ac.uk/reviews-and-reports/provider?UKPRN=10028191

QAA Reviewed
Quality Assurance Agency
for Higher Education



Living in Bristol

Bristol attracts thousands of students from around the world, with its unique culture, thriving city centre and harbour, and a popular leisure and arts scene.



A city like no other

A harbour-side city, bursting with creativity, British culture and a proud engineering heritage.

One of a kind

Bristol was voted one of the best cities to live in Britain for its cost of living and unique mix of culture and history (Sunday Times 2015). The city has won several more awards, including the European Region of the Future, and Britain's most musical city. It is also the first UK city to be awarded the European Green Capital Award 2015.

Birthplace of modern engineering

One man left his mark on Bristol more than any other; Isambard Kingdom Brunel was an engineer famous for his remarkable modern designs, including the Great Western Railway from London to Bristol. The city of Bristol is home to Brunel's ss Great Britain, the first ocean-going iron ship, as well as the iconic Clifton Suspension Bridge.

Live like a local

Bristol is a thriving and creative city of more than 440,000 people, and a great place for socialising and shopping. Discover unique areas such as the famous Gloucester Road, Europe's longest street of independent shops, and St Nicholas Market, where you will find a fantastic range of jewellery, vintage clothes and delicious food.

Art all around

Hometown of globally renowned street artist, Banksy, Bristol celebrates originality in unconventional art forms. Europe's largest street art festival, Upfest, is held here each July, and invites hundreds of global artists to paint in the city's streets. Be amazed by stunning, colourful buildings and architecture on an organised walking tour around Bristol.

Rich culture

Enjoy a unique, artistic performance at one of Britain's oldest working theatres, Bristol Old Vic, or explore Bristol's outstanding museums and art galleries. Visit trendy areas such as the waterfront docks, with stylish bars, live music, comedy clubs and restaurants. In the summer, the city attracts 500,000 visitors during the Bristol International Balloon Fiesta – a four-day celebration of colourful hot-air balloons.



Further afield

There are plenty of attractions on Bristol's doorstep, including the beautiful Roman city of Bath, historic houses such as Dyrham Park and Tyntesfield, and the impressive Berkeley Castle. The surrounding countryside is known for its remarkable beauty, including the spectacular Cheddar Gorge, just 45 minutes away.

Want to know more?

www.uwe.ac.uk/bristol

www.kaplanpathways.life/bristol



Your new home

By booking your accommodation with us, you can be sure that you'll have somewhere comfortable, secure and close to the College to relax in at the end of each day.

A home away from home

Easy living

Our accommodation options are ideally located on campus, just a few minutes' walk to the International College building and university facilities. With excellent transport links and a frequent shuttle bus running close by, it's just a quick journey to the city, where you can explore all the attractions of Bristol.

Student community

We offer high-quality, modern apartments designed specifically for students, which are a great place to meet and make new friends. You will enjoy a stylish bedroom with a private bathroom, shared kitchen and living room with entertainment options and laundry facilities, all in a safe environment with secure door entry and security cameras.

Why choose college-arranged accommodation?

You'll benefit from:

- safe and secure residences
- WiFi, bills and maintenance all included in your rent payments
- dedicated booking and post-arrival support
- contract lengths tailored to your study dates
- a variety of room preferences, including under-18 and single gender options
- a free student starter pack with bedding, cooking equipment and essential cleaning items
- in-house laundry facilities.

How to book your accommodation

We guarantee college-organised accommodation for all of our students as long as they book by the published guarantee date:

- 1) Indicate on the application form that you require accommodation.
- 2) When you receive your offer, confirm your interest by paying the accommodation deposit along with your tuition fee deposit.
- 3) Our expert accommodation team will contact you and guide you through the booking process if you need support.

Example accommodation prices

Accommodation prices depend on your course length and accommodation choice.

Intake	Course / contract length	Approximate prices*
Autumn 2017	2 terms (38 weeks)	£6,634–£6,976
	3 terms (49 weeks)	£8,482–£8,923
Spring 2018	2 terms (33 weeks)	£5,794–£6,091
	3 terms (35 weeks)	£6,130–£6,445
Summer 2018	Contract lengths vary†	£1,426–£2,551

* Pricing examples are an illustration. Confirmed pricing for each intake will be available on our website 2 weeks before the booking confirmation period opens.

† Summer accommodation contracts last until September 2018 (prices apply to this tenancy). If needed, you can then begin a new contract to cover the rest of your course.

Download the Accommodation Guide

For more details about the available housing options, contract dates and prices, visit our website to download our Accommodation Guide: www.kaplanpathways.life/bristol-housing



"I love living in Bristol. It has very nice buildings and a really great atmosphere, and it's not too crowded or busy. My accommodation is really good and I have everything I need. I'm glad that I have my own bathroom!"

Faritha from Nigeria (left)
Foundation Certificate in Science and Engineering

Meet Alina



Alina from Mexico

Studied an International Year One at UWE Bristol's International College, and progressed to BEng (Hons) Aerospace Engineering at UWE Bristol

I chose to study at UWE Bristol because it has links with some of the biggest names in industry. As someone who dreams of leading a company of her own one day, that is very appealing! Bristol is also a young and vibrant city, and there is always something new to look at or to participate in.

Back home in Mexico, I completed the IB Diploma, but unfortunately, I was missing one subject I needed to get into university straight away. The International College offered me the chance to study an International Year One course and complete my first year in a comfortable environment, specifically tailored for international students.

When I first arrived in the UK, I was both terrified and excited! I was finally where I wanted to be after months of hard work, but I was also leaving my family behind to pursue my dreams. The International College staff were so helpful, though. From the minute I registered, to when I finished my course, they were always there to help.

I successfully completed my course at the College and am now studying an Aerospace Engineering degree at UWE Bristol. All the lecturers are experts in their field and they are all so incredibly passionate about what they teach. You can't help but get excited about whatever topic they're talking about! The facilities at the University are amazing too. We've got our own wind tunnel and specialised engineering laboratories.

Over the summer, I had the opportunity to do a work placement at a company called Airinmar. In my role, I helped review warranty requests and update aircraft records to provide a better service to the customers. Seeing the economic side of things gave me a different view of the industry and a better sense of what I want to do when I graduate.

In my spare time, I try to relax when I'm not doing work. I love watching films and TV series, and I also read a lot. I enjoy going out with friends to relax and take a break from my work for a bit. I'm currently living just off Gloucester Road in Bristol, which is a great location. It is full of local and independent businesses, shops and cafes, and has something for everyone. It is really lively and everyone is very friendly!

Making friends here has been easy. All it takes to start talking to someone is a friendly smile, and maybe a comment about the weather! As higher education students, everyone is in the same situation, both the international and home students.

After I graduate from UWE Bristol, I plan to work for a couple of years in the aerospace industry and then take a break and do a Masters in Business Management.

I would definitely recommend studying in the UK and at UWE Bristol to other international students.

Find out what other students say, search 'KaplanPathways' #KaplanLife



Your pathway to a Bachelors degree

Study one of the following university pathway courses for entry to an undergraduate degree at UWE Bristol.

Foundation Certificate and International Year One course options

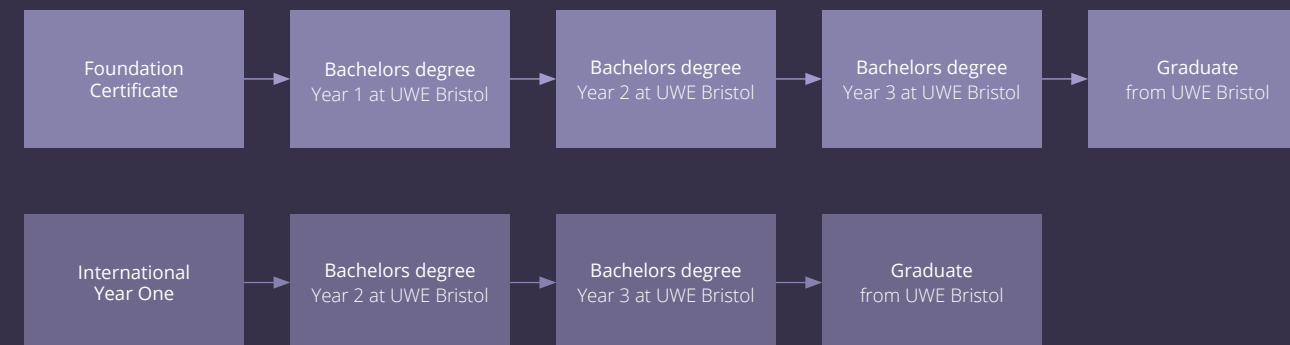
Foundation Certificate in Business, Law and Social Sciences (page 32)

Foundation Certificate in Science and Engineering (page 34)

International Year One in Business (page 36)

International Year One in Engineering (page 38)

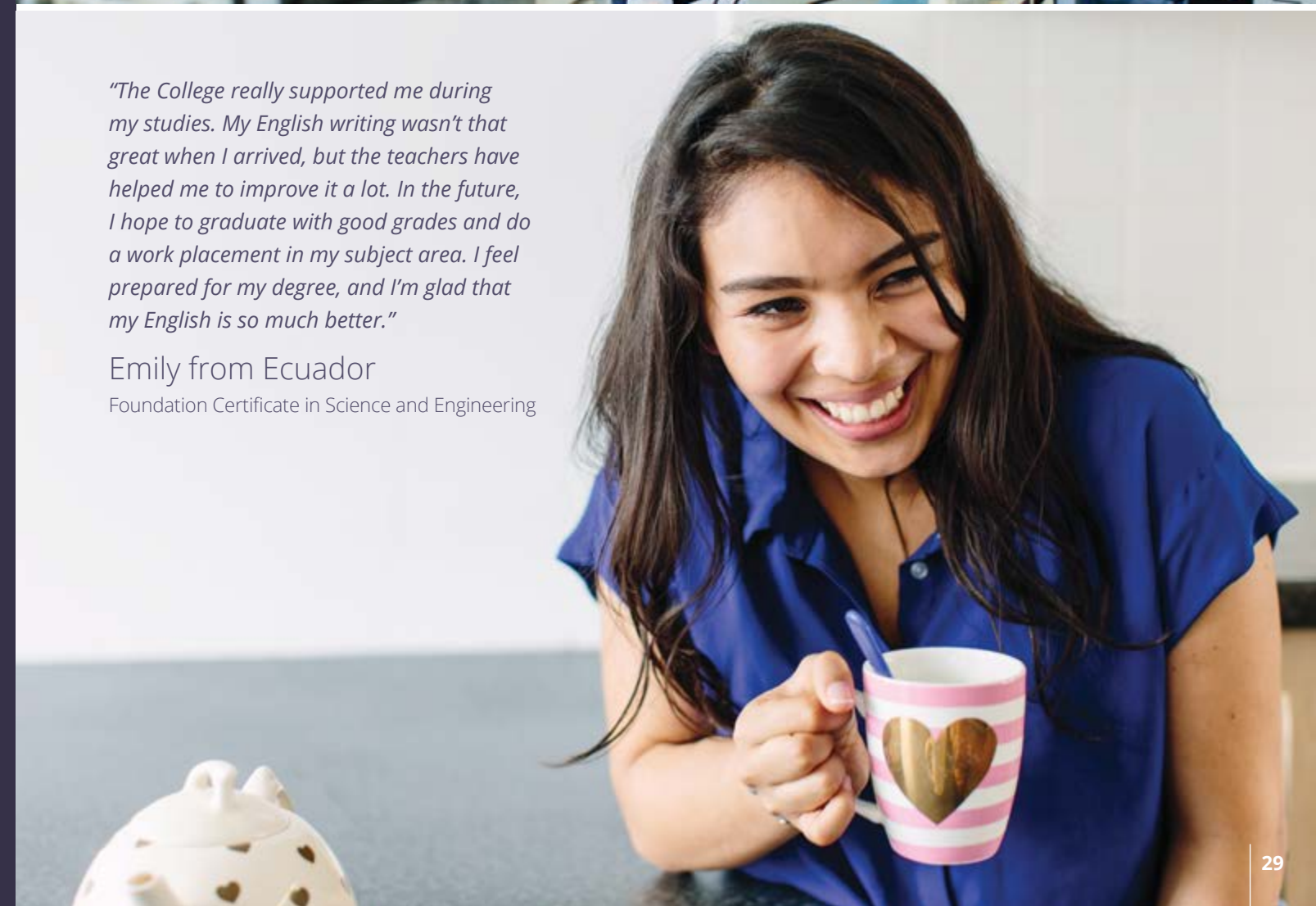
Course progression



"The College really supported me during my studies. My English writing wasn't that great when I arrived, but the teachers have helped me to improve it a lot. In the future, I hope to graduate with good grades and do a work placement in my subject area. I feel prepared for my degree, and I'm glad that my English is so much better."

Emily from Ecuador

Foundation Certificate in Science and Engineering



Choose your Bachelors degree

You are guaranteed entry to one of these Bachelors degrees at UWE Bristol when you pass your pathway course at the required level with good attendance.

Foundation Certificate in Business, Law and Social Sciences (page 32)

Business pathway

1st year of:

- BA (Hons) Accounting and Finance
- BA (Hons) Banking and Finance
- BSc (Hons) Building Surveying
- BA (Hons) Business and Events Management
- BA (Hons) Business and Human Resource Management
- BA (Hons) / LLB (Hons) Business and Law
- BA (Hons) Business and Management
- BA (Hons) Business Management with Accounting and Finance
- BA (Hons) Business Management with Economics
- BA (Hons) Business Management and Leadership
- BA (Hons) Business Management with Marketing
- BA (Hons) Economics
- BSc (Hons) Environmental Resource Management
- BA (Hons) / BSc (Hons) Geography
- BSc (Hons) Information Technology Management for Business
- BA (Hons) International Business
- BA (Hons) Journalism and Public Relations
- BA (Hons) Marketing
- BA (Hons) Marketing Communications
- BA (Hons) Property Development and Planning
- BSc (Hons) Quantity Surveying and Commercial Management
- BSc (Hons) Real Estate
- BSc (Hons) / MPlan Urban Planning

Law and Social Sciences pathway

1st year of:

- BA (Hons) Business and Law
- BA (Hons) Commercial Law
- BA (Hons) Criminology
- BA (Hons) / LLB (Hons) Criminology and Law

- BA (Hons) Criminology with Psychology
- BA (Hons) Criminology and Sociology
- BA (Hons) Early Childhood
- BA (Hons) English
- BA (Hons) English Language and Linguistics
- LLB (Hons) European and International Law
- BA (Hons) History
- LLB (Hons) Law
- LLB (Hons) Law with Psychology
- BA (Hons) Media Culture and Practice
- BA (Hons) Media and Journalism
- BA (Hons) Philosophy
- BA (Hons) Politics and International Relations
- BSc (Hons) Psychology
- BSc (Hons) Psychology with Criminology
- BSc (Hons) Psychology with Law
- BSc (Hons) Psychology with Sociology
- BA (Hons) Sociology
- BSc (Hons) Sociology with Psychology

Foundation Certificate in Science and Engineering (page 34)

Life Sciences pathway

1st year of:

- BSc (Hons) / MSci Biological Sciences
- BSc (Hons) / MSci Biomedical Science
- Certificate of Higher Education Premedical Science
- BSc (Hons) Environmental Resource Management
- BSc (Hons) / MSci Environmental Science
- BSc (Hons) Forensic Computing and Security
- BSc (Hons) / MSci Forensic Science
- BA (Hons) / BSc (Hons) Geography
- BSc (Hons) Occupational Therapy
- BSc (Hons) Physiotherapy

Physical Sciences and Engineering pathway

1st year of:

- BEng (Hons) / MEng Aerospace Engineering
- BEng (Hons) / MEng Aerospace Engineering with Pilot Studies
- BSc (Hons) Architectural Technology and Design
- BSc (Hons) Architecture
- BEng (Hons) Architecture and Environmental Engineering
- BA (Hons) Architecture and Planning
- BSc (Hons) Audio and Music Technology
- BEng (Hons) / MEng Automotive Engineering
- BSc (Hons) Broadcast Audio and Music Technology
- BEng (Hons) Civil and Environmental Engineering
- BSc (Hons) Computer Science
- BSc (Hons) Creative Music Technology
- BSc (Hons) Digital Media
- BEng (Hons) / MEng Electronic Engineering
- BSc (Hons) Forensic Computing and Security
- BSc (Hons) Games Technology
- BSc (Hons) Geology
- BSc (Hons) Information Technology Management for Business
- BA (Hons) Interior Architecture
- BSc (Hons) Mathematics
- BSc (Hons) Mathematics and Statistics
- BEng (Hons) / MEng Mechanical Engineering
- BSc (Hons) Product Design Technology
- BEng (Hons) Robotics

International Year One in Business (page 36)

Business pathway

2nd year of:

- BA (Hons) Business and Events Management
- BA (Hons) Business and Human Resource Management
- BA (Hons) Business and Management
- BA (Hons) Business Management with Economics
- BA (Hons) Business Management and Leadership
- BA (Hons) Business Management with Marketing
- BA (Hons) International Business
- BA (Hons) Marketing
- BA (Hons) Marketing Communications

Finance pathway

2nd year of:

- BA (Hons) Accounting and Finance
- BA (Hons) Business Management with Accounting and Finance

International Year One in Engineering (page 38)

Aerospace, Automotive and Mechanical Engineering pathway

2nd year of:

- BEng (Hons) / MEng Aerospace Engineering
- BEng (Hons) / MEng Aerospace Engineering with Pilot Studies
- BEng (Hons) / MEng Automotive Engineering
- BEng (Hons) / MEng Mechanical Engineering

Civil Engineering pathway

2nd year of:

- BEng (Hons) Civil and Environmental Engineering

Electronic Engineering pathway

2nd year of:

- BEng (Hons) / MEng Electronic Engineering

Use our online course finder

Please note, degree courses are subject to change.
Visit our online course finder for an up-to-date list:
www.kaplanpathways.degree/uwe

Have any questions?

Contact our team for help and advice:
www.kaplanpathways.study/contact-uwe

100% of students who successfully completed their International Year One in 2015 received an unconditional offer from UWE Bristol

90% of students who successfully completed their Foundation Certificate in 2015 received an unconditional offer from UWE Bristol

Foundation Certificate in Business, Law and Social Sciences

Course information

2 terms
Entry requirements: at least 11 years of education and UKVI IELTS 5.5 (minimum 4.5 in all skills)
Start: September, January, February
Tuition fees: £11,650

3 terms: Enhancement
Entry requirements: at least 11 years of education and UKVI IELTS 5.5 (minimum 4.5 in all skills)
Start: September, October*
Tuition fees: £12,690

3 terms: Language
Entry requirements: at least 11 years of education and UKVI IELTS 5.0 (minimum 4.0 in all skills)
Start: September, January
Tuition fees: £12,690

Is your IELTS below 5.0?

If you do not meet the English language entry level for these course options, but have at least UKVI IELTS 4.0 in all skills, we can offer you a course that includes Extended English and Skills (EES). Contact us for more details about EES.

* 2.5 term (Enhancement) course starting in October.
Fees are accurate for the 2017/18 academic year, but subject to change for future years.
Modules are subject to change.

You will study the following modules:

Language for Study 2
• English skills in reading, writing, speaking and listening

Language for Study 3
• Complex arguments in English
• Giving evidence of research
• Preparation for exit language exams

Skills for Study 1
• Presentation, note-taking and essay-writing skills

Skills for Study 2
• Analytical skills in written and spoken information

Skills for Study 3
• Researching and analysing information to a high standard
• Structuring written and oral arguments

Statistics
• Analysing technical data

Plus the modules in one of these pathways:

Business pathway
Business and the Business Environment
• National and international business
• Effects of globalisation

Business Enterprise
• Role of culture in business
• Analysing business performance

Economics in an International Context
• How markets work
• Factors influencing international trade and investment

Law and Social Sciences pathway
Introduction to Legal Principles and Systems
• Fundamental groundings in legal principles and systems

Introduction to Social Sciences
• Principles of the social sciences
• Classic and contemporary social theories
• Globalisation, global education, and global economics

The Individual, State and Society
• The individual and the state in contemporary western society

3-term students also study Enhancement or Language course modules:

3 terms: Enhancement
Basic Computing Skills
• Essential IT skills including Microsoft Office
• Modern computing topics
• Technology in industry and society

Introduction to British Society and Culture
• UK life and culture
• British society and history

Introduction to Tech Corp
• Creating a business plan for a technology that would benefit the local community
• Developing key teamwork, time management, presentation and leadership skills

Personal Development and Pre-Study Skills
• Advanced skills related to your course
• Personal development skills

3 terms: Language
Language for Study 1
• Vocabulary, grammar and pronunciation
• Discussion and short essays

Your pathway to UWE Bristol

You are guaranteed progression to the 1st year of a Bachelors degree at UWE Bristol, when you pass your Foundation Certificate at the required level and with good attendance.

- Available degree subjects include:
- Accounting
 - Business
 - Economics
 - Finance
 - Journalism
 - Law
 - Management
 - Media
 - Physiotherapy
 - Psychology

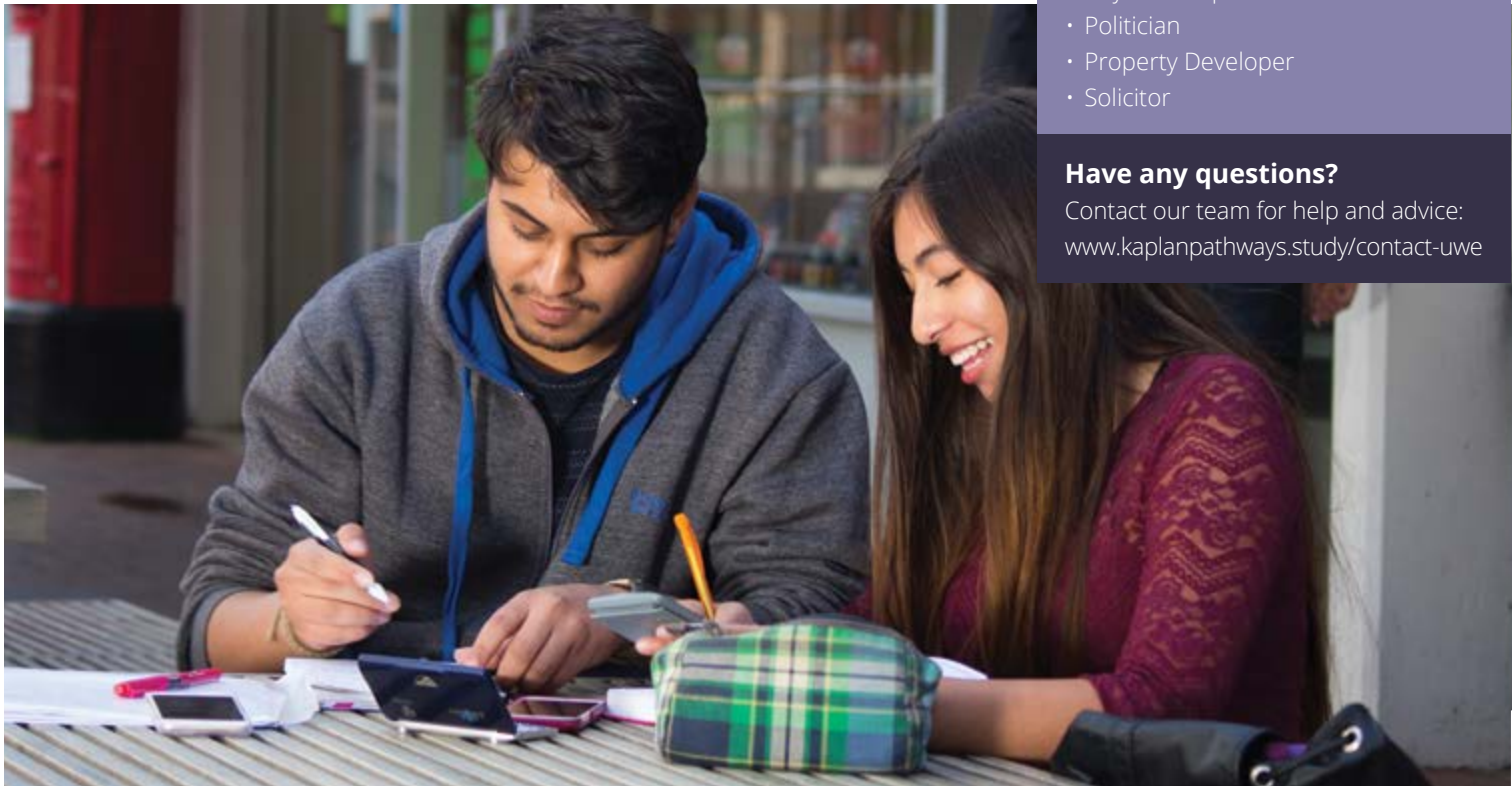
For a list of your available degree options, please see page 30.

Your potential careers

- Accountant
- Business Manager
- Counsellor
- Economist
- Financial Trader
- Human Resources Manager
- Marketing Executive
- Physiotherapist
- Politician
- Property Developer
- Solicitor

Have any questions?

Contact our team for help and advice:
www.kaplanpathways.study/contact-uwe



Foundation Certificate in Science and Engineering

Course information

2 terms
Entry requirements: at least 11 years of education and UKVI IELTS 5.5 (minimum 4.5 in all skills)
Start: September, October*, January, February, March*
Tuition fees: £11,650

3 terms: Enhancement
Entry requirements: at least 11 years of education and UKVI IELTS 5.5 (minimum 4.5 in all skills)
Start: September, October†
Tuition fees: £12,690

3 terms: Language
Entry requirements: at least 11 years of education and UKVI IELTS 5.0 (minimum 4.0 in all skills)
Start: September, January
Tuition fees: £12,690

Is your IELTS below 5.0?
If you do not meet the English language entry level for these course options, but have at least UKVI IELTS 4.0 in all skills, we can offer you a course that includes Extended English and Skills (EES). Contact us for more details about EES.

* Available for Physical Sciences and Engineering pathway only.
† 2.5 term (Enhancement) course starting in October.
Fees are accurate for the 2017/18 academic year, but subject to change for future years.
Modules are subject to change.

You will study the following modules:

- Language for Study 2**
- English skills in reading, writing, speaking and listening
- Language for Study 3**
- Complex arguments in English
 - Giving evidence of research
 - Preparation for exit language exams

- Skills for Study 1**
- Presentation, note-taking and essay-writing skills

Plus the modules in one of these pathways:

- Life Sciences pathway**
- Biochemistry of Life**
- Organic chemistry and biological science
 - Laboratory skills

- Fundamentals of Science**
- Gases, liquids and solids
 - The periodic table, protons, attractions and repulsions
 - Chemical energy changes

- Biological Sciences**
- Plant structure and function
 - Genetic and cellular principles
 - Animal reproduction, metabolism and immunology

- Skills for Study 2**
- Analytical skills in written and spoken information
- Skills for Study 3**
- Researching and analysing information to a high standard
 - Structuring written and oral arguments

- Statistics**
- Analysing technical data

- Physical Sciences and Engineering pathway**
- Applied Mathematics**
- Mathematical modelling and reasoning skills

- Basic Engineering**
- Key engineering principles
 - Fluid mechanics, thermodynamics, materials, mechanics, dynamics, engineering design and electronics

- Physical Sciences**
- Optics, waves and lasers
 - Electronics and magnetism
 - Thermal physics and thermal and mechanical properties of matter

3-term students also study Enhancement or Language course modules:

- 3 terms: Enhancement**
- Basic Computing Skills**
- Essential IT skills including Microsoft Office
 - Modern computing topics
 - Technology in industry and society

- Introduction to Tech Corp**
- Creating a business plan for a technology that would benefit the local community
 - Developing key teamwork, time management, presentation and leadership skills

- Personal Development and Pre-Study Skills**
- Advanced skills related to your course
 - Personal development skills

- Preparatory Mathematics**
- Basic mathematical knowledge and skills

- 3 terms: Language**
- Basic Computing Skills**
- Language for Study 1
 - Vocabulary, grammar and pronunciation
 - Discussion and short essays

Your pathway to UWE Bristol

You are guaranteed progression to the 1st year of a Bachelors degree at UWE Bristol, when you pass your Foundation Certificate at the required level and with good attendance.

- Available degree subjects include:
- Animal Science
 - Architecture
 - Biology
 - Engineering
 - Environmental Studies
 - Geography
 - Mathematics
 - Media

For a list of your available degree options, please see page 30.

Your potential careers

- Architect
- Biomedical Scientist
- Chemical Engineer
- Civil Engineer
- Ecologist
- Environmental Consultant
- IT Technician
- Mathematician
- Research Scientist

Have any questions?

Contact our team for help and advice:
www.kaplanpathways.study/contact-uwe



International Year One in Business

Course information

2 terms
Entry requirements: at least 12 years of education and UKVI IELTS 5.5 (minimum 5.0 in all skills)
Start: September, January
Tuition fees: £11,750

3 terms: Enhancement
Entry requirements: at least 12 years of education and UKVI IELTS 5.5 (minimum 5.0 in all skills)
Start: September, October*
Tuition fees: £12,900

Is your IELTS below 5.5?
If you do not meet the English language entry level for these course options, but have at least UKVI IELTS 4.0 in all skills, we can offer you a course that includes Extended English and Skills (EES). Contact us for more details about EES.

* 2.5 term (Enhancement) course starting in October.
Fees are accurate for the 2017/18 academic year, but subject to change for future years.
Modules are subject to change.

You will study the following modules:

Language for Study 3
• Complex arguments in English
• Giving evidence of research
• Preparation for exit language exams

Skills for Study 2
• Analytical skills in written and spoken information

Economics
• Microeconomics (behaviour of consumers, firms and the state)
• Macroeconomics (aggregative behaviour in an open economy)

Financial Reporting
• Interpreting financial statements
• Analysis and evaluation skills
• The role IT plays in processing financial information

Plus the module in one of these pathways:

Business pathway
Marketing in the Operational Context
• International business processes
• Marketing activities and their effect on an organisation's performance

Management Accounting
• Planning, decision-making and cost control within business environments

Organisational Behaviour
• Fundamentals of organisational behaviour
• Individuals, groups and leaders in organisations
• Organisational structures and design
• Contemporary trends in organisational environment

Quantitative Methods for Business
• Quantitative techniques and analytical and evaluation skills

Finance pathway
Management Accounting and Financial Analysis
• Management and financial accounting issues
• Process costing, pricing and profitability analysis

3-term students also study Enhancement course modules:

3 terms: Enhancement
Computing Skills
• Basic IT skills
• Computing topics
• Software such as Microsoft Office

Modern British Society and Culture
• UK life, culture and history

Personal Development and Study Skills
• Advanced skills related to your course
• Personal development skills

Principles of Tech Corp
• Producing a business plan for a technology that would benefit the local community
• Developing key teamwork, time management, presentation and leadership skills

Your pathway to UWE Bristol

You are guaranteed progression to the 2nd year of a Bachelors degree at UWE Bristol, when you pass your International Year One at the required level and with good attendance.

- Available degree subjects include:
- Accounting
 - Business
 - Events
 - Finance
 - Human Resources
 - Management
 - Marketing

For a list of your available degree options, please see page 30.

Your potential careers

- Accountant
- Advertising Copywriter
- Business Manager
- Financial Trader
- Human Resources Manager
- Management Consultant
- Marketing Executive
- Public Relations Officer
- Recruitment Consultant
- Risk Manager

Have any questions?

Contact our team for help and advice:
www.kaplanpathways.study/contact-uwe



International Year One in Engineering

Course information

2 terms
Entry requirements: at least 12 years of education and UKVI IELTS 5.5 (minimum 5.0 in all skills)
Start: September, January
Tuition fees: £12,100

3 terms: Enhancement
Entry requirements: at least 12 years of education and UKVI IELTS 5.5 (minimum 5.0 in all skills)
Start: September, October*
Tuition fees: £13,140

Is your IELTS below 5.5?

If you do not meet the English language entry level for these course options, but have at least UKVI IELTS 4.0 in all skills, we can offer you a course that includes Extended English and Skills (EES). Contact us for more details about EES.

* 2.5 term (Enhancement) course starting in October.
Fees are accurate for the 2017/18 academic year, but subject to change for future years.
Modules are subject to change.

You will study the following modules:

- Language for Study 3

 - Complex arguments in English
 - Giving evidence of research
 - Preparation for exit language exams
- Mathematics for Engineers 1

 - Mathematical methods, symbolism and notation
 - Algebra and functions and mathematical modelling techniques
- Skills for Study 2

 - Analytical skills in written and spoken information

Plus the modules in one of these pathways:

- Electronic Engineering pathway**

Digital Electronic Systems

 - Microprocessor-based digital systems and engineering principles
 - Digital design methods and systems
- Mathematics for Engineers 2

 - Mathematical methods of engineering
 - Calculus, differentiation, integration and differential equations
- Electrical and Electronic Engineering Principles 1

 - Fundamental principles of electrical and electromagnetic signals
 - Electronic components and circuit design
- Programming

 - Basics of programming
 - Engineering principles in the software industry
 - Solving engineering problems with software systems
- Electrical and Electronic Engineering Principles 2

 - Electrical and Electronic Engineering skills
 - Analysing magnetic and electromagnetic systems

Aerospace, Automotive and Mechanical Engineering pathway
Design, Manufacture and Materials

- Methods, tools, manufacturing techniques and materials
- Practical workshop skills

Fluid Mechanics

- Fluid dynamics principles: pressure, density, mass flow rates, continuity and Bernoulli's equation

Mathematics for Engineers 2

- Mathematical methods of engineering
- Calculus, differentiation, integration and differential equations

Mechanical Stress and Dynamics

- Dynamics including stress and strain, shear force and bending, Newton's laws of motion, momentum and force impulse

Thermodynamics

- Thermodynamic principles
- Analysing combustion-powered gas and steam power plants in engineering

3-term students also study Enhancement course modules:

3 terms: Enhancement
Personal Development and Study Skills

- Advanced skills related to your course
- Personal development skills

Principles of Tech Corp

- Producing a business plan for a technology that would benefit the local community
- Developing key team work, time management, presentation and leadership skills

Civil Engineering pathway
Civil Engineering Field Study

- Civil engineering methodologies, data collection and techniques
- Field skills acquisition and analysis of place-specific information

Design, Manufacture and Materials

- Methods, tools, manufacturing techniques and materials
- Practical workshop skills

Engineering Hydrology

- Analysis of hydrological data
- Techniques for flood estimation
- Hydrology, hydraulics, ground engineering and drainage design

Mechanical Stress and Dynamics

- Dynamics including stress and strain, shear force and bending, Newton's laws of motion, momentum and force impulse

Surveying and GIS

- GIS data structures, analytical and practical methods
- Data visualisation and effective cartography
- Level surveying, angle and distance measurements

Plus one of the following modules:

- Computing Skills

 - Basic IT skills
 - Computing topics,
 - Learn software such as Microsoft Office
- Refresher Mathematics for Engineering

 - Advanced study of scientific disciplines
 - Basic mathematical concepts for engineering

Your pathway to UWE Bristol
You are guaranteed progression to the 2nd year of a Bachelors degree at UWE Bristol, when you pass your International Year One at the required level and with good attendance.
Available degree subjects include:

- Aerospace Engineering
- Civil Engineering
- Electronic Engineering
- Environmental Engineering
- Mechanical Engineering

For a list of your available degree options, please see page 30.

Your potential careers

- Aeronautical Engineer
- Aerospace Engineer
- Civil Engineer
- Electronic Engineer
- Mechanical Engineer

Have any questions?
Contact our team for help and advice:
www.kaplanpathways.study/contact-uwe

Your pathway to a Masters degree

Study one of the following university pathway courses for entry to a postgraduate degree at UWE Bristol.

Pre-Master's course options

Pre-Master's in Business, Law and Social Sciences (page 44)

Pre-Master's in Science and Engineering (page 46)

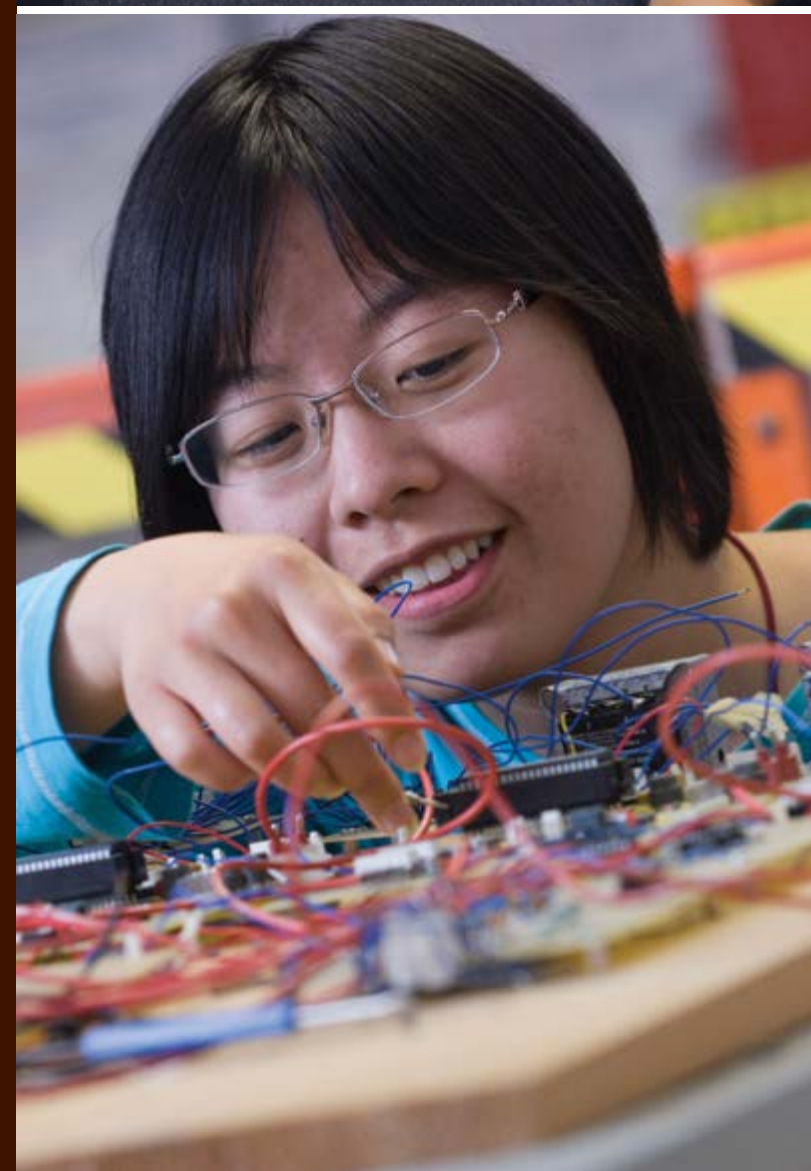
Course progression



"The teachers are so friendly – even back home, I never had teachers who are so interesting. They are very knowledgeable about everything, not just their own subject."

The course at the International College has really prepared me for my Masters at UWE Bristol. If I hadn't studied here, I think I would have really struggled during my degree."

Joshua from Nigeria
Pre-Master's in Science and Engineering



Choose your Masters degree

You are guaranteed entry to one of these Masters degrees at UWE Bristol when you pass your pathway course at the required level with good attendance.

Pre-Master's in Business, Law and Social Sciences (page 44)

- MSc Business Management
- LLM Commercial Law
- MSc Construction Project Management
- MSc Environmental Consultancy
- MSc Environmental Health
- LLM Environmental Law and Sustainable Development
- MSc Events Management
- MSc Finance
- MSc Health Psychology
- MSc Human Resource Management (International)
- LLM International Banking and Finance Law
- LLM International Law
- MSc International Management
- LLM International Trade and Economic Law
- MSc Marketing
- MSc Marketing Communications
- MBA Master of Business Administration (Full-time)
- MSc Public Health
- MSc Quantity Surveying
- MSc Real Estate Management
- MSc Sustainable Development in Practice
- MSc Transport Planning
- MSc Urban Planning

Pre-Master's in Science and Engineering (page 46)

- MSc Biomedical Science
- MSc Environmental Management
- MSc Information Technology
- MSc Mechanical Engineering
- MSc Science Communication
- MSc Software Engineering
- MSc Transport Engineering and Planning
- MSc Transport Planning
- MA Wildlife Filmmaking

Use our online course finder

Please note, degree courses are subject to change.
Visit our online course finder for an up-to-date list:
www.kaplanpathways.degree/uwe

Have any questions?

Contact our team for help and advice:
www.kaplanpathways.study/contact-uwe

100%

of students who successfully completed their Pre-Master's in 2015 received an unconditional offer from UWE Bristol



Pre-Master's in Business, Law and Social Sciences

Course information

2 terms

Entry requirements: at least 3 years of higher education and UKVI IELTS 5.5 (minimum 5.0 in all skills)

Start: September, January

Tuition fees: £11,650

Is your IELTS below 5.5?

If you do not meet the English language entry level for this course option, but have at least UKVI IELTS 4.5 (minimum 4.0 in all skills), we can offer you a course that includes Extended English and Skills (EES). Contact us for more details about EES.

Fees are accurate for the 2017/18 academic year, but subject to change for future years.

Modules are subject to change.

You will study the following modules:

Language for Study 2

- English skills in reading, writing, speaking and listening

Language for Study 3

- Complex arguments in English
- Giving evidence of research

Skills for Study 1

- Presentation, note-taking and essay-writing skills
- Academic learning styles
- Research skills and avoiding plagiarism

Skills for Study 2

- Analytical skills in written and spoken information

Skills for Study 3

- Researching and analysing information to a high standard
- Structuring written and oral arguments

Introduction to Management

- Resources, recruitment and information management
- Managing workplace situations more effectively and efficiently

Research Design and Critique

- Researching strategies and methodologies (e.g. qualitative, quantitative and mixed methods)

Research Project

- Organisational and planning skills
- Providing evidence to support arguments
- Referencing texts

Statistics

- Researching reports and data
- Using standard statistical tools
- Assessing quality of research



Your pathway to UWE Bristol

You are guaranteed progression to a Masters degree at UWE Bristol, when you pass your Pre-Master's at the required level with good attendance. Available degree subjects include:

- Business
- Economics
- Finance
- Human Resources
- Law
- Management
- Marketing
- Public Health
- Urban planning

For a list of your available degree options, please see page 42.

Your potential careers

- Barrister
- Business Manager
- Counsellor
- Economist
- Financial Trader
- Human Resources Manager
- Marketing Executive
- Politician
- Quantity Surveyor
- Solicitor

Have any questions?

Contact our team for help and advice:
www.kaplanpathways.study/contact-uwe

Pre-Master's in Science and Engineering

Course information

2 terms
Entry requirements: at least 3 years of higher education and UKVI IELTS 5.5 (minimum 5.0 in all skills)
Start: September, January
Tuition fees: £11,650

Is your IELTS below 5.5?

If you do not meet the English language entry level for this course option, but have at least UKVI IELTS 4.5 (minimum 4.0 in all skills), we can offer you a course that includes Extended English and Skills (EES). Contact us for more details about EES.

Fees are accurate for the 2017/18 academic year, but subject to change for future years.
Modules are subject to change.

You will study the following modules:

- Language for Study 2**

 - English skills in reading, writing, speaking and listening

Language for Study 3

 - Complex arguments in English
 - Giving evidence of research

Skills for Study 1

 - Presentation, note-taking and essay-writing skills
 - Academic learning styles
 - Research skills and avoiding plagiarism

Skills for Study 2

 - Analytical skills in written and spoken information

Skills for Study 3

 - Researching and analysing information to a high standard
 - Structuring written and oral arguments
- Emerging Technologies and Project Management**

 - Assessing technologies, their markets and strategies
 - Developing new organisational structures
 - Managing emerging technologies

Research Design and Critique

 - Researching strategies and methodologies (e.g. qualitative, quantitative and mixed methods)

Research Project

 - Organisational and planning skills
 - Providing evidence to support arguments
 - Referencing texts

Statistics

 - Researching reports and data
 - Using standard statistical tools
 - Assessing quality of research



Your pathway to UWE Bristol
You are guaranteed progression to a Masters degree at UWE Bristol, when you pass your Pre-Master's at the required level with good attendance. Available degree subjects include:

- Biomedical Science
- Communications
- Forensic Science
- Information Technology
- Mechanical Engineering
- Software Engineering
- Transport Planning

For a list of your available degree options, please see page 42.

Your potential careers

- Biomedical Scientist
- Forensic Scientist
- IT Technician
- Lecturer
- Mechanical Engineer
- Research Scientist
- Software Engineer
- Transport Planner

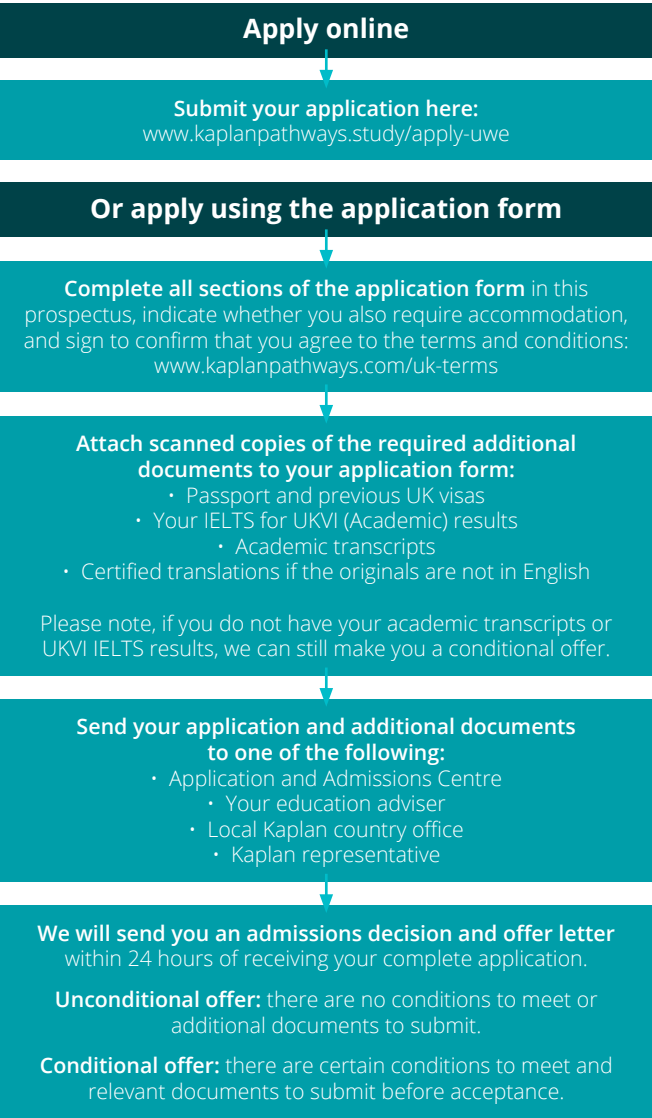
Have any questions?

Contact our team for help and advice:
www.kaplanpathways.study/contact-uwe



Next steps

Our global team of multilingual advisers will help you through the application process, with expert support at every stage. Apply online now or follow the steps below to complete the application form in this prospectus



Contact us
Application and Admissions Centre
Kaplan International Pathways
2nd Floor, Warwick Building
Avonmore Road, London W14 8HQ, UK

T: +44 (0)20 7045 4925 | E: internationalcollege@uwe.ac.uk
W: www.uwe.ac.uk/internationalcollege
Or contact your local Kaplan country office: www.kaplanpathways.world



* Process for Tier 4 students.

UWE BRISTOL'S INTERNATIONAL COLLEGE APPLICATION FORM



A PERSONAL DETAILS

First name:	Gender: Female Male
Surname / family name:	Date of birth (dd/mm/yy):
Will you be under 18 when your International College course is due to start? Yes No	
Permanent address:	
Postcode:	Country:
Telephone:	Mobile:
Email (primary):	Email (secondary):

B NATIONALITY, RESIDENCE AND FEE DETAILS

Country of birth:	Nationality:
Please attach a copy of your passport to your application.	
Second nationality (if you have one):	
Do you need a visa to study in the UK? Yes No	Have you ever been refused a visa to study in the UK? Yes No
Have you ever been granted a visa to study in the UK? Yes No	Have you ever been refused a visa to study in any other country? Yes No
How do you plan to fund your studies? I am self-funding or family-funded I have sponsorship from a government, organisation or individual I will be sponsored by a government, organisation or individual but have not yet received my sponsorship letter	

C EMERGENCY CONTACT (PARENT / GUARDIAN / NEXT OF KIN)

First name:	Surname / family name:
Relationship to student (e.g. father):	
Telephone:	Mobile:
Email (primary):	Email (secondary):

D PATHWAY COURSE AND DEGREE CHOICE

Choose your pathway course: Foundation Certificate in Business, Law and Social Sciences Foundation Certificate in Science and Engineering International Year One in Business International Year One in Engineering Pre-Master's in Business, Law and Social Sciences Pre-Master's in Science and Engineering	Preferred pathway course start date: Autumn (September–November) Spring (January–April) Summer (May–July)
Full title of your chosen degree at UWE Bristol:	
Have you or an agent applied to UWE Bristol directly? Yes No	

E EDUCATION HISTORY

Please list all schools, colleges and universities attended (continue on a separate sheet if necessary).

Name of qualification	Dates attended (from–to)	Institution name	Country	Completed?
				Yes No
				Yes No
				Yes No

F ENGLISH LANGUAGE

Have you taken an IELTS for UKVI (Academic) exam? Yes No	Date taken:
Please attach your IELTS for UKVI (Academic) test results with your application (if you do not need a visa to study in the UK and have other English language qualifications, please also include these with your application)	

The application form continues on the next page.

G EMPLOYMENT HISTORY AND STUDY GAPS

Please detail what you have been doing between your latest completed qualification and now (if this period is longer than 6 months). This may include work, further studies or travel. Please also specify if any of these were undertaken in other countries.

Please attach copies of your CV, employer references, or any other study gap documents.

H ACCOMMODATION

Our college-arranged accommodation packages offer high-quality student housing for your university preparation course, and represent exceptional value for money. Please note, students selecting private accommodation will be subject to further immigration or tenancy checks.

Do you require College-arranged accommodation?	<input type="radio"/> Yes	<input type="radio"/> No
--	---------------------------	--------------------------

I INSURANCE

Do you have comprehensive travel and health insurance for your university pathway course?	Yes	No
---	-----	----

If yes, please submit a copy of your insurance policy document. If no, the insurance policy we offer will automatically be added to your study package. We will contact you with full details about the policy once your application has been accepted. Comprehensive insurance for the duration of your studies is compulsory. Failure to disclose relevant medical information might affect the validity of your insurance policy.

J MEDICAL INFORMATION

The International College is committed to equality of opportunity and aims to provide an inclusive learning environment for students with special needs or disabilities. To help us best support you, please provide as much information as you can on your particular needs.

Do you have any medical conditions?	Yes	No
-------------------------------------	-----	----

If yes, please complete this form: kaplanpathways.com/additional-requirements

K DISCLOSURE OF CRIMINAL CONVICTIONS

Do you have any criminal convictions in any country — excluding spent convictions and minor motoring offences? Yes (you might be required to provide details) No

L DECLARATION

- I declare that the information I have supplied on and with this form is complete and correct.
- I understand that UWE Bristol's International College may need to process and store my information in countries outside the UK (and not subject to UK Data Protection laws), such as the United States or other countries where we have offices or service providers.
- I consent to the transfer of my information to these other countries.
- I understand that the giving of false or incomplete information may lead to the refusal of my application or cancellation of my enrolment.
- I have read, understood and agreed to the terms and conditions and fees of UWE Bristol's International College as outlined on the UWE Bristol's International College.
- I undertake to pay the fees incurred as they are due.
- I authorise UWE Bristol's International College to supply any relevant data to UWE Bristol and to supply official records of my progress at UWE Bristol's International College to my parents, guardian, sponsor, agent or their nominee.
- I hereby consent to UWE Bristol's International College contacting any school or institution at which I have previously studied in order to verify the information I have provided in the application, and hereby authorise such school or institution to disclose such information.
- I understand that signing this form gives permission to trained staff first aiders or any licensed hospital or physician to administer first aid if required for you or for your child if he/she is under 18 years of age.

I can confirm I have read, understood and agree to the declaration above:

Name:

Date:

To be completed by the applicant's parent or guardian if the applicant is under 18 years of age. I confirm I have read, understood and agree to the declaration above on behalf of the applicant:

Name:

Date:

M CHECKLIST AND ADDITIONAL DOCUMENTS

Please check you have supplied all the required information in this checklist:

1. Complete all sections of the application form: Yes

2. Confirm you agree to the declaration section L: Yes

3. Attach all additional required documents to support your application:

- Academic certificates and/or transcripts (with certified translations if not in English)
- Proof of English level: UKVI IELTS results or equivalent (with certified translations if not in English)
- Previous visas, residence permits, or CAS
- Previous UK study attendance records and certificates
- Passport(s) photo page – including passports or ID for multiple/secondary nationalities, if applicable
- Sponsorship letter or financial guarantee
- CV/Personal statement
- Employment or study gap evidence
- Other relevant documents

4. Send your application and copies of supporting documents to:

- Your Kaplan representative; or
- The Application and Admissions Centre; or
- Your nearest country office.

See kaplanpathways.com/uk-apply for more details.

AGENT INFORMATION

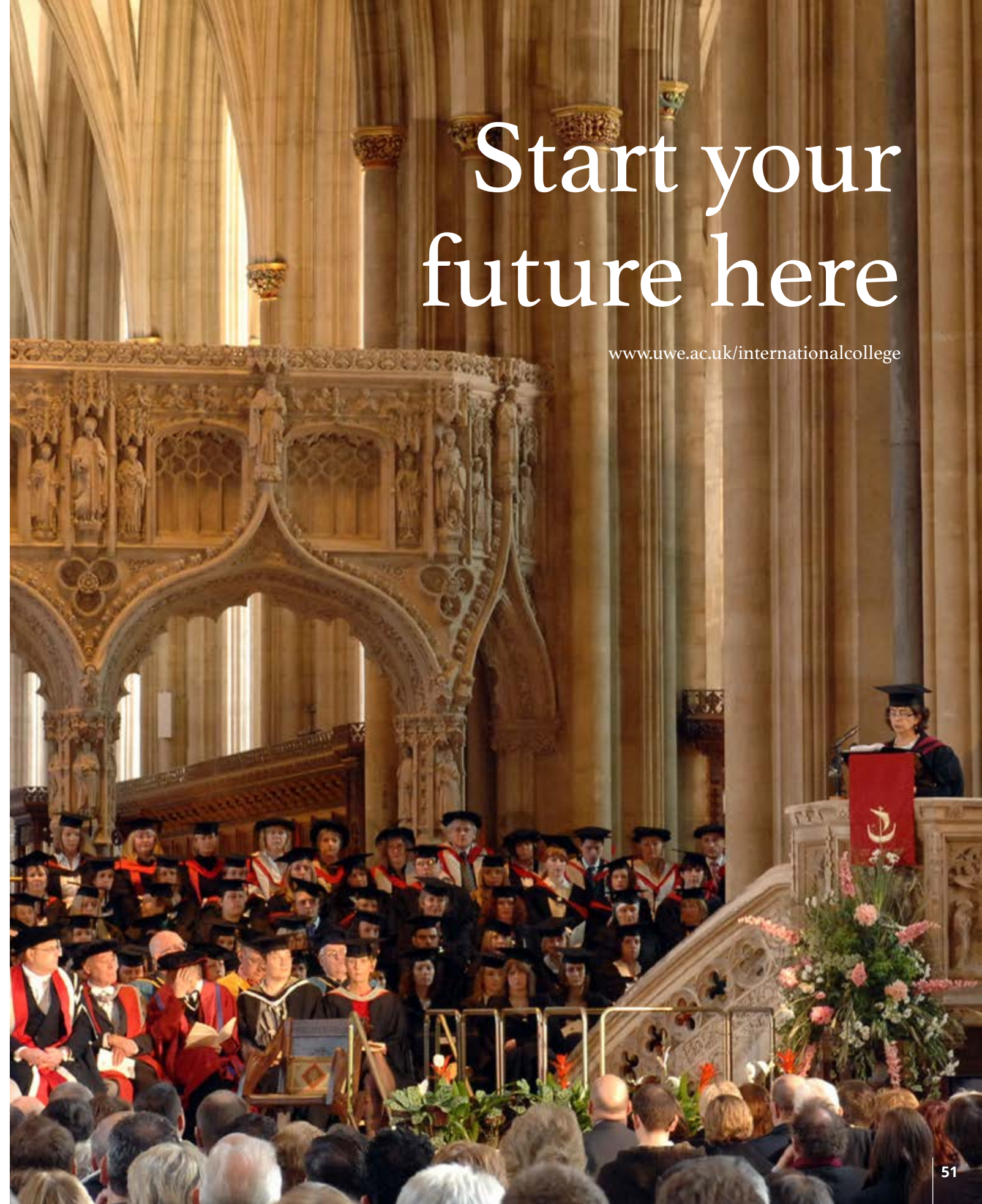
Do you have an educational agent?	Yes	No
-----------------------------------	-----	----

Agent name:

Counsellor name:	
------------------	--

City:

Agent stamp:



Start your future here

www.uwe.ac.uk/internationalcollege



CONTACT US

+44 (0)20 7045 4925

internationalcollege@uwe.ac.uk

Find us online, search: KaplanPathways #KaplanLife

www.uwe.ac.uk/internationalcollege

All information is correct at time of publication and is subject to change. Published December 2016.