



UNIVERSITY OF
LIVERPOOL

LIVERPOOL INTERNATIONAL COLLEGE
PROSPECTUS 2017-18



KAPLAN INTERNATIONAL
PATHWAYS



Your pathway starts here

Find us online:
liverpool.ac.uk/lic

About us

Why choose the University of Liverpool?	04
The University of Liverpool: a closer look	06
Campus life	08
Liverpool International College	10
Our courses	12
Teaching that transforms	14
Supporting you at every step	16
Complete cover	18

Life in the UK

Love Liverpool	22
Your new home	24
Meet an International College student	26

Undergraduate courses

Your pathway to a bachelor's degree	28
Choose your bachelor's degree	30
Foundation Certificate in:	
Business, Law and Social Sciences	34
Science and Engineering	36

Postgraduate courses

Your pathway to a master's degree	38
Choose your master's degree	40
Pre-Master's in:	
Business, Law and Social Sciences	42
Science and Engineering	44

Application information

Next steps	48
Application form	49

**Consistently
among the
world's
top 1% of
universities**

**£600 million
invested in
award-winning
facilities
since 2011**

**Top 10 in
the UK for
staff-to-student
ratio**

Guardian University
Guide 2017

**4th in the
UK for
Physiotherapy**

Times and Sunday
Times Good University
Guide 2017

**Top 15
nationally
for research
impact in
Business and
Management**

Research Excellence
Framework 2014

**Top 15 in
the UK for
Aeronautical and
Manufacturing
Engineering**

Times and Sunday Times
Good University Guide 2017

**2nd most
cost-effective
student city in
the UK**

Natwest Student
Index 2016

**Top 15
nationally
for Marketing**

Complete University
Guide 2017

**Member of the
prestigious
Russell Group
of universities**

**Academic
home of 9
Nobel Prize
winners**

Why choose the University of Liverpool?

**Top 15 in
the UK for
Engineering**

Times and Sunday
Times Good
University Guide 2017

**Top 20
nationally for
Pharmacy and
Pharmacology**

Guardian University
Guide 2017

**Over 7,700
international
students from
127 countries**

The University of Liverpool: a closer look



The 'red brick' Victoria building

The University of Liverpool is one of the UK's most prestigious institutions. By studying a pathway course at Liverpool International College, you can progress to a degree at this truly international university.

Academic Excellence

A member of the prestigious Russell Group of UK universities, Liverpool is consistently ranked in the top 1% of universities worldwide. Liverpool's courses reflect the latest research, and many have received professional accreditations. Over the years, the University of Liverpool has been associated with 9 Nobel Prize winners.

230+

clubs and societies for you to join

Join a club or society



The University's Sidney Jones Library



World-changing research

Discovering the wheat genome, clinical trials of malaria vaccines, searching for the Higgs-Boson particle — these are just a few examples of fascinating research projects carried out at the University of Liverpool. 81% of the University's research is ranked as world leading or internationally excellent (Research Excellence Framework 2014), and the University attracts £89 million in research income.

Career-focused

The University is committed to supporting its students' career goals, and 83% of international graduates are employed or in further study within six months of graduating from the University (Higher Education Statistics Agency). The award-winning Careers and Employability Service provides CV and covering letter guidance, gives information on converting qualifications, and organises employer networking events.



Industry-standard facilities

Top 1%

of universities in the world for internationally recognised research (Research Excellence Framework 2014)

Building for the future

The University has invested over £600 million into teaching, research and accommodation facilities since 2011. Liverpool Guild of Students, one of the largest Students' Union buildings in the UK, has also benefited from significant investment, and now enjoys an incredible range of facilities, social spaces and student clubs.

International support

With its global reputation for excellence, it's no surprise that the University of Liverpool is home to 7,700+ international students from 127 countries. Within Student Services at the University, there is a dedicated advice and guidance team for international students, providing support with everything from visas to welfare issues.

Top 20

UK universities targeted by leading employers for graduate employment (Times Higher Education Global University Employability Ranking 2016)

liverpool.ac.uk

liverpoolguild.org

liverpool.ac.uk/lic



Study on campus in the heart of Liverpool

While studying at Liverpool International College, you will live and learn on campus as a university student, enjoying access to outstanding facilities and student services.

Libraries and study facilities

The University's 2 libraries offer almost 2 million books and over 2,000 computers, as well as group study areas and quiet zones. Students have access 24 hours a day, including at weekends, throughout the academic year.



On-campus museums and research resources



High-quality sports facilities



Meet other students from around the world

Victoria Gallery and Museum

Located on campus in the iconic, red-brick Victoria building, this fascinating museum is home to an exciting collection of fine art, curious objects, unusual displays and permanent exhibits. Best of all, admission is free throughout the year!

Sports and Fitness Centre

The University boasts excellent indoor and outdoor sports facilities, located at the University Sports and Fitness Centre. The University's sports facilities recently underwent a £5 million refurbishment, meaning students enjoy some of the very best university sports facilities in the UK.

Access to the University's libraries





At Liverpool International College, we prepare students for success – not just on their course and University of Liverpool degree, but in life. Our dedicated teachers and one-to-one tutorials will help you to achieve your academic and personal goals, and to progress to a fantastic future at the University of Liverpool and beyond.

Everything you need to succeed

Studying at Liverpool International College helps you develop the English language and academic skills, subject knowledge and confidence to succeed in your degree. The College provides you with everything you need to make the most of your academic and personal opportunities at the University of Liverpool.

Multiple intakes

Our courses begin on various dates throughout the year, so you can start your studies at a convenient time. Plus, our wide range of course options can suit students at many different English levels.

55

nationalities represented at the International College in 2016

Guaranteed entry to the University of Liverpool

Your place on a bachelor's or master's degree at the University of Liverpool is guaranteed when you pass your pathway course at the International College with the required results and good attendance.

University lifestyle

From your first day at the International College, you will live and learn as a University of Liverpool student, enjoying access to the University's first-class resources. You can use the University libraries, study spaces, IT suites and world-class sports facilities.

liverpool.ac.uk/lic

"I am delighted you are considering joining us at Liverpool International College. Liverpool — the city, the University and the College — has everything you need to have a fantastic international experience, and we'll make sure you get all the support you need to fulfil your academic and personal goals. I look forward to meeting you soon."

Leelee Yates (pictured left)
College Director, Liverpool International College



Liverpool International College

#KaplanLife
Search 'KaplanPathways'
f t y d i s

Our courses

The university pathway courses at Liverpool International College are specially designed for international students. Whichever course you study, you'll be well equipped to succeed on your bachelor's or master's degree at the University of Liverpool.

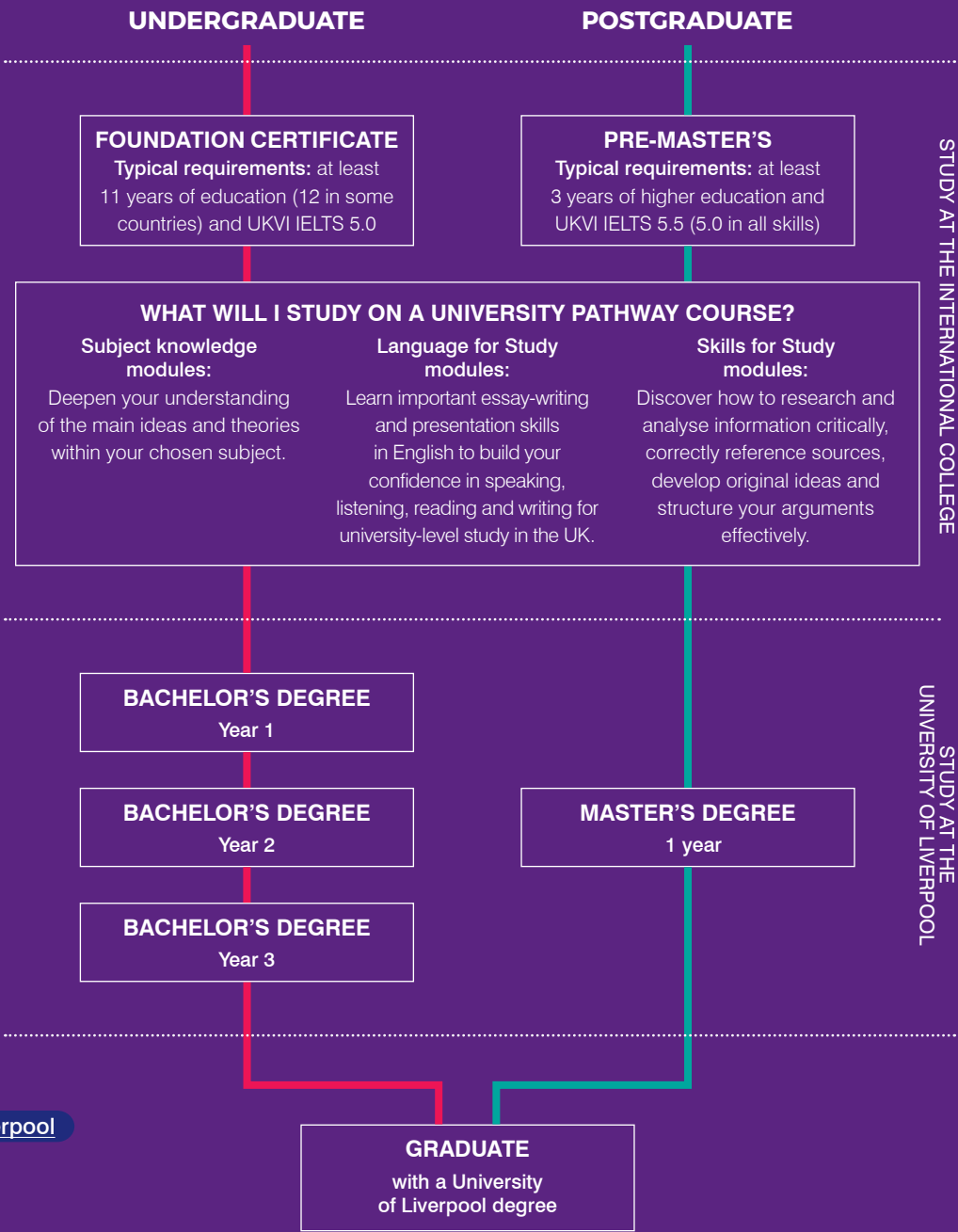
The UK education system

In the UK, students normally take A levels before starting a bachelor's (or undergraduate) degree, which usually lasts 3 or 4 years. Our Foundation Certificate courses are also a recognised qualification for entry to a bachelor's degree, and are tailored to the needs of international students.

Some university graduates then study a master's (or postgraduate) degree, which usually lasts 1 year. Our Pre-Master's courses bridge the gap between your existing university credit and the level needed for entry to a postgraduate degree.

Lower IELTS?

If you do not meet the English language entry level for one of our pathway courses, but have at least UKVI IELTS 4.0 in all skills, we can offer you a course with Extended English and Skills (EES). Contact us for more details about EES.



[kaplanpathways.degree/liverpool](https://www.kaplanpathways.degree/liverpool)





.....

Teaching that transforms

.....

“I love being part of a highly skilled and experienced team of professionals at the International College. The best thing about my role is working with students from a variety of different cultures and backgrounds.”

Andy Whitty
Academic Skills Tutor, Liverpool International College

Dedicated, experienced teachers and regular one-to-one tutorial sessions are just a couple of reasons why students at the International College achieve their academic and personal goals, and progress to fantastic futures at the University and beyond.

.....

Learn from the best
You will benefit from high standards of teaching and have the best possible academic support throughout your course. Our tutors are specialists at teaching international students, and have a wealth of experience from both academic and professional backgrounds. They work hard to ensure you reach the academic and English language standards required by the University.

30 <i>master's or PhD degrees held by International College staff</i>	18 <i>the average class size at the International College</i>
--	--

Academic support
Our classes allow students to build their confidence quickly and create close relationships with teachers and classmates. You will have regular meetings with your own Personal Tutor, who will answer your questions and help you develop important study skills. In addition, assessments and mid-term reports will help you track your progress and prepare you for university.

Specialist attention
Our tutors excel in identifying areas where you need a little extra help, and if needed, we offer additional sessions to support you in your learning.

Supporting you at every step



Learn about Liverpool on tours of the city

Our warm and welcoming staff will support you both before and during your time at Liverpool International College.

New opportunities, exciting experiences

With us by your side, you will have the confidence to embrace the incredible possibilities and opportunities that come with studying abroad, while forming lifelong friendships.

Our support starts before you even arrive in Liverpool. Contact our friendly advisers, and they will be happy to answer any questions, big or small. You will also receive access to a dedicated, online pre-arrival guide, packed with essential information and advice for your journey.

Helping you arrive

From the moment you land in the UK, we are there for you. We can arrange for you to be picked up from the airport and taken to your accommodation, ensuring you feel safe and at ease in your new home.

60+

social, educational and sports activities organised for students by the College each term



Discover local legends



Study with other international students



Welcome Week

Before your classes start, you'll enjoy Welcome Week, where our friendly College staff will help you settle in and do everything possible to make you feel comfortable. You'll meet your teachers, find out more about your course, and tour the campus facilities. You will also receive help with things such as setting up a bank account and registering with a doctor.

Support for parents

All parents are invited to a special event that takes place during the first week of your course. Here they can join campus and city tours and meet key College staff. We also send parents regular updates on your academic progress and well-being, and offer an extra guardianship services for students under 18.

Get Involved

We organise frequent activities to help you make the most of student life in Liverpool. For example:

- karaoke
- visits to art galleries and museums
- day trips to theme parks
- football matches
- cultural food nights
- trips to North Wales and Chester
- exciting sports and games tournaments

Progressing to your degree

As you approach the end of your pathway course, we'll give you guidance on how to obtain your new visa for your University of Liverpool degree.

"There will always be someone to turn to as you progress through your studies. We will be on hand to help you achieve your academic goals and ensure that you have a rewarding, fun-filled and memorable experience!"

Gaye Harrison
Head of College Services,
Liverpool International College

Complete cover

From scholarships to back-up progression options, we have everything covered to ensure you are on the best possible path to a successful future.

Scholarships

We know how much time and effort goes into your studies, and that a high-quality education is a significant and important investment in your future. To make this incredible opportunity of studying abroad more affordable, we offer 2 types of scholarships.

Pathway scholarships

We offer partial tuition scholarships to qualifying students at the International College. These are awarded based on your academic achievements in your home country.

Progression scholarships

We also work with the University of Liverpool to reward our best-performing students. If you finish your pathway course with excellent grades, you could qualify for a partial tuition scholarship for your degree.

University Placement Service (UPS)

UPS is a service at the College that gives you extra peace of mind when preparing for your degree. If you pass your pathway course, but don't quite achieve the required results to progress to the University of Liverpool, the UPS team is there to support your progression to another UK university. We guarantee placement to all our students who pass.

86%

of students who successfully completed their Liverpool International College course in 2016 received an unconditional offer from the University of Liverpool.

Insure your studies

We offer all students the option to purchase EduTravel: a comprehensive travel, emergency health, and academic insurance policy. EduTravel is specially designed for international students, so you can be sure you're getting a policy that's ideal for your studies abroad.

In safe hands

EduTravel is provided by Endsleigh, one of the leading UK insurance specialists. Endsleigh has been insuring students for over 50 years, and is the only insurance provider recommended by the National Union of Students, so you'll be covered by true industry experts.

Automatic cover

We want to make sure you're fully covered when studying abroad. That's why you must have travel and emergency medical insurance for the full duration of your pathway course in the UK. To make it easy for you, we'll automatically add EduTravel to your study package.

If you wish to organise your own insurance, you'll need to show us proof of alternative comprehensive cover when you accept your offer to study with us and before you begin your trip to study with Kaplan, so we can confirm your place.

For more information about EduTravel, such as what's included, where you're covered, eligibility criteria and limitations, please visit: kaplanpathways.com/insurance

Liverpool International College is an appointed representative of Endsleigh Insurance Services Limited which is authorised and regulated by the Financial Conduct Authority. Liverpool International College is a trading name of Kaplan Liverpool Limited.

Part of the Kaplan family

Liverpool International College is part of Kaplan Pathways (previously Kaplan International Colleges). We are proud to be transforming the futures of international students through close partnerships with world-leading universities. Find out more at: kaplanpathways.partners

Quality Assurance Agency

We have undergone a Higher Education Review (Embedded Colleges) by the Quality Assurance Agency for Higher Education (QAA) and have received our final report, which is available in full at: www.qaa.ac.uk/reviews-and-reports/provider?UKPRN=10028191

The review resulted in the following outcome:

- The maintenance of the academic standards of awards offered on behalf of Kaplan International Colleges UK Ltd meets UK expectations.
- The quality of student learning opportunities is commended.
- The quality of the information about learning opportunities meets UK expectations.

QAA Reviewed

Quality Assurance Agency for Higher Education



Life in the UK

Discover all the UK has to offer while living and studying in one of the most student-friendly cities in the country, Liverpool.

.....



Love Liverpool

Proud birthplace of The Beatles



Liverpool ONE shopping centre



Explore Liverpool's popular waterfront

6TH

largest city in Britain

Birthplace of the Beatles

A UNESCO World City of Music, Liverpool hosts a number of exciting festivals like the Liverpool International Music Festival and Liverpool Sound City. The world-class Royal Liverpool Philharmonic Orchestra gives around 70 concerts every year. Liverpool is also the hometown of the most influential rock band of all time – The Beatles.

Footballing passion

Liverpool is passionate about football; local newspapers, TV channels and even stage plays are dedicated to the sport. 2 rival Premier League football clubs, Everton FC and Liverpool FC, are based in Liverpool. Experience the excitement of the 'Merseyside derby', or take a tour of the city's historic stadiums.

2,750+

government protected buildings and monuments of special architectural or historical interest

[visitliverpool.com](https://www.visitliverpool.com)

[kaplanpathways.life/liverpool](https://www.kaplanpathways.life/liverpool)

Liverpool is one of the fastest growing and most diverse cities in the UK. Students instantly feel at home in the city ranked by Rough Guides as one of the friendliest in the UK, and the 3rd best to visit worldwide.

City of culture

Liverpool is packed with culture. It has more museums and art galleries than any other UK city outside of London, such as the Tate Liverpool and its world-famous collection of modern art. Liverpool's theatres host fantastic performances through the year, continuing the city's long history of performing arts.

Amazing attractions

There are so many things to see and experience in Liverpool. These include Liverpool's waterfront (a UNESCO World Heritage site), 2 cathedrals, the 60-metre tall Wheel of Liverpool and ferry cruises along the River Mersey. You can even safely mix with lions, tigers, giraffes and baboons at nearby Knowsley Safari Park!



City art and culture



Famous attractions



Celebrate cultural festivals



A thriving student city

Your New Home



Make Liverpool your home away from home

By booking your accommodation with us, you can be sure that you'll have somewhere comfortable, secure and close to the College to relax in at the end of each day.

Easy living

Most of our residences are ideally located on campus, just a few minutes' walk to the International College and university facilities. With excellent transport links close by, it's a quick journey to the city, where you can explore the attractions of Liverpool and visit other locations in the UK.

Student community

Our halls of residence are high-quality, modern apartments designed for students, and are a great place to meet and make new friends. You will enjoy a stylish bedroom with private bathroom, shared kitchen and living room, and laundry facilities, all in a safe environment with secure entry and security cameras.

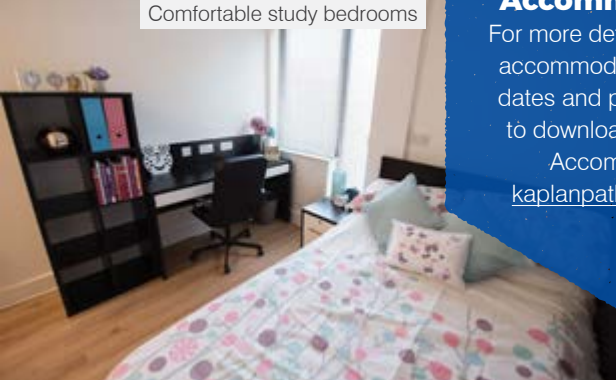
Live with other international students



Why choose college-arranged accommodation?

- residences are safe and secure
- all bills and maintenance included in the rent payments; nothing extra to pay
- WiFi included in all options
- dedicated booking and post-arrival support
- contract lengths tailored to your study dates
- variety of room preferences are available including under-18s and single-gender options
- free student starter pack including bedding, cooking equipment and essential cleaning items
- in-house laundry facilities

Comfortable study bedrooms



Example accommodation prices

Prices depend upon your course length and accommodation choice.

Intake	Course / contract length	Approximate prices*
Autumn 2017	2 terms (38 weeks)	£4,962–£7,850
	3 terms (49 weeks)	£6,326–£10,050
Spring 2018	2 terms (33 weeks)	£4,342–£6,850
	3 terms (35 weeks)	£4,590–£7,250
Summer 2018	Contract lengths vary†	£1,118–£2,850

* Pricing examples are an illustration. Confirmed pricing for each intake will be available on our website 2 weeks before the booking confirmation period opens.

† Summer accommodation contracts last until September 2018 (prices apply to this tenancy). If needed, you can then begin a new contract to cover the rest of your course.

Download the Accommodation Guide

For more details about the available accommodation options, contract dates and prices, visit our website to download our comprehensive Accommodation Guide: kaplanpathways.life/lic-housing



Central locations close to campus



How to book your accommodation

We guarantee college-organised housing for all of our students, as long as they book by the published guarantee date.

- 1 Indicate on the application form that you require accommodation.
- 2 When you receive your offer, confirm your interest by paying the accommodation deposit along with your tuition fee deposit.
- 3 Our expert accommodation team will contact you and guide you through the booking process if you need support.

Meet Daniel

**“The UK
education
system is
really highly
respected.”**

Daniel Bacellar is a Brazilian student who is studying a Foundation Certificate in Business, Law and Social Sciences, progressing to a bachelor's degree in Egyptology and Ancient History.

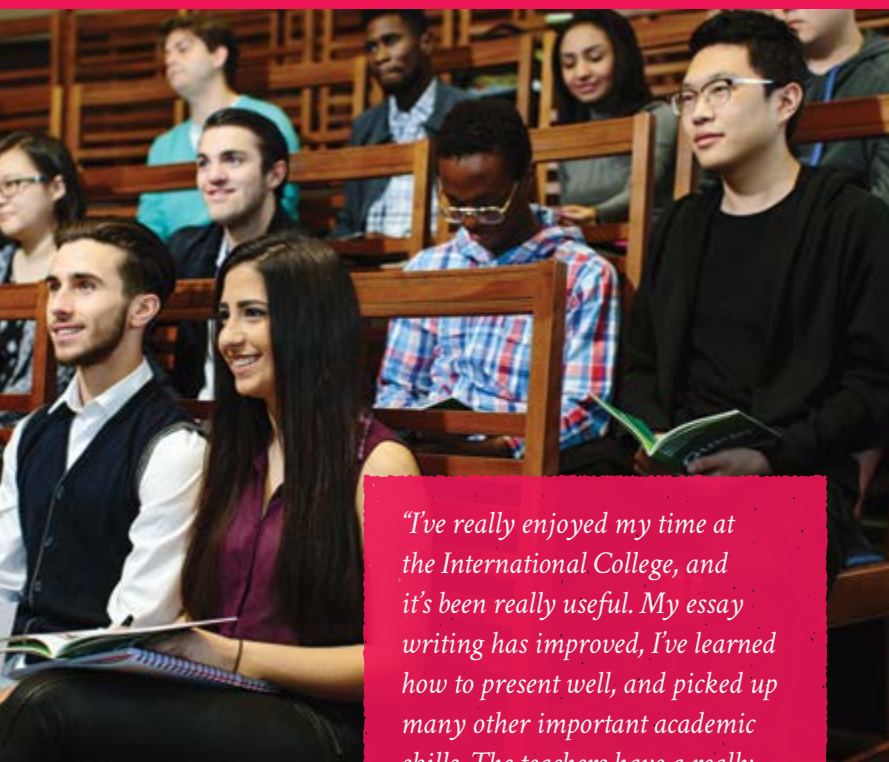
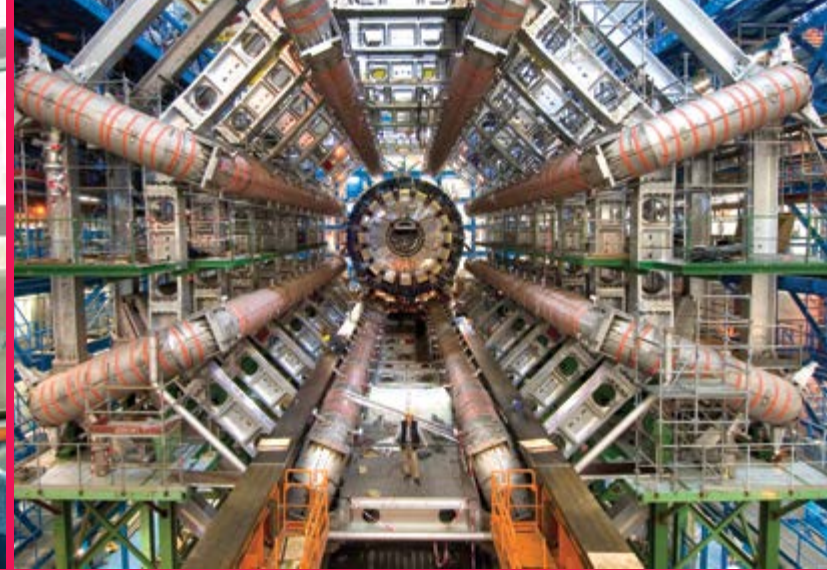
Hear about his time at the International College.

“I’ve been in love with England from a young age. English culture has always been fascinating to me, and the UK education system is really highly respected in Brazil.

At the International College, I’ve had some wonderful teachers. The Skills for Study module has been particularly good for making me feel ready for university. My essay writing has improved, and my presentations too.

My favourite teacher has so much enthusiasm for what he does. He’s intelligent, fun, but also strict when he needs to be.

I’ve really enjoyed socialising with friends at the College. We had a visit to Chester Zoo, we play a lot of 5 or 6 a-side football, and have had many fun games and tournaments.



"I've really enjoyed my time at the International College, and it's been really useful. My essay writing has improved, I've learned how to present well, and picked up many other important academic skills. The teachers have a really engaging way of teaching classes."

Skills for Study is my favourite class. It's shown me how to produce academic work to a really high standard. The teacher is fantastic!"

Rain Hu, China
(pictured above, right)



Your pathway to a bachelor's degree

Study one of the following Foundation Certificate courses for entry to an undergraduate degree at the University of Liverpool.

Course options

..... Foundation Certificate in Business, Law and Social Sciences (page 34)
..... Foundation Certificate in Science and Engineering (page 36)

Course progression



Choose your bachelor's degree

At the University of Liverpool

Foundation Certificate in Business, Law and Social Sciences (page 34)

Business pathway

Progress to the first year of:

BA (Hons) Accounting and Finance
BA (Hons) Business Economics
BA (Hons) Business Management*
BA (Hons) Business Management and Ancient History*
BA (Hons) Business Management and Archaeology*
BA (Hons) Classics and Business Management
BA (Hons) Classical Studies and Business Management*
BA (Hons) Communication & Media and Business Management*
BA (Hons) Criminology and Business Management*
BSc (Hons) Economics
BA (Hons) Economics and Ancient History*
BA (Hons) Economics and Archaeology*
BA (Hons) Economics and Classical Studies*
BA (Hons) Economics and Classics*
BA (Hons) Economics and Communication & Media*
BA (Hons) Economics and Criminology*
BA (Hons) Egyptology and Business Management*
BA (Hons) Egyptology and Economics*
BA (Hons) Film Studies and Business Management*
BA (Hons) Film Studies and Economics*
BA (Hons) International Business
BA (Hons) International Politics & Policy and Business Management*
BA (Hons) International Politics & Policy and Economics*
BA (Hons) Irish Studies and Business Management*
BA (Hons) Irish Studies and Economics*
BA (Hons) Law and Business Management*
BA (Hons) Law and Economics*
BA (Hons) Marketing
BA (Hons) Music and Business Management*
BA (Hons) Music and Economics*
BA (Hons) Philosophy and Business Management*
BA (Hons) Philosophy and Economics*
BA (Hons) Politics and Business Management*
BA (Hons) Politics and Economics*
BA (Joint Hons) Politics and International Business
BA (Hons) Popular Music and Business Management*
BA (Hons) Popular Music and Economics*
BA (Hons) Social Policy and Business Management*
BA (Hons) Social Policy and Economics*
BA (Hons) Sociology and Business Management*
BA (Hons) Sociology and Economics*

Business and Mathematics pathway

Progress to the first year of:

BSc (Hons) Actuarial Mathematics
BSc (Hons) Computer Information Systems
BSc (Hons) Financial Computing
BSc (Hons) Electronic Commerce Computing
BSc (Hons) Internet Computing
BSc (Joint Hons) Mathematics and Business Management
BSc (Hons) Mathematics and Economics
BSc (Hons) Mathematics with Finance
BA (Joint Hons) Mathematics and Philosophy
BSc (Hons) Mathematics and Statistics
BSc (Hons) Software Development

Law and Social Sciences pathway

Progress to the first year of:

BA (Hons) Ancient History
BA (Hons) Ancient History and Archaeology*
BA (Hons) Archaeology
BA (Hons) Archaeology of Ancient Civilisations
BA (Hons) Classical Studies
BA (Hons) Classical Studies and Archaeology*
BA (Hons) Classics
BA (Hons) Classics and Ancient History*
BA (Hons) Classics and Archaeology*
BA (Hons) Communication & Media
BA (Hons) Communication & Media and Ancient History*
BA (Hons) Communication & Media and Archaeology*
BA (Hons) Communication & Media and Classical Studies*
BA (Hons) Communication & Media and Classics*
BA (Hons) Communication, Media and Popular Music*
BA (Hons) Criminology and Ancient History*
BA (Hons) Criminology and Archaeology*
BA (Hons) Criminology and Business Management*
BA (Hons) Criminology and Classical Studies*
BA (Hons) Criminology and Communication & Media*
BA (Hons) Criminology
BA (Hons) Criminology and Classics*
BA (Hons) Criminology and Sociology*
BA (Hons) Economics and Ancient History*
BA (Hons) Economics and Archaeology*
BA (Hons) Economics and Classical Studies*
BA (Hons) Economics and Classics*
BA (Hons) Economics and Communication & Media*
BA (Hons) Economics and Criminology*
BA (Hons) Egyptology
BA (Hons) Egyptology and Ancient History*

BA (Hons) Egyptology and Archaeology*
BA (Hons) Egyptology and Business Management*
BA (Hons) Egyptology and Classical Studies*
BA (Hons) Egyptology and Classics*
BA (Hons) Egyptology and Communication & Media*
BA (Hons) Egyptology and Criminology*
BA (Hons) Egyptology and Economics*
BA (Hons) Environment and Planning
BA (Hons) Film Studies and Ancient History*
BA (Hons) Film Studies and Archaeology*
BA (Hons) Film Studies and Classical Studies*
BA (Hons) Film Studies and Classics*
BA (Hons) Film Studies and Communication & Media*
BA (Hons) Film Studies and Criminology*
BA (Hons) Film Studies and Egyptology*
BA (Hons) Geography
BA (Hons) Geography and Planning
BA (Hons) Hispanic Studies
BA (Hons) International Politics & Policy
BA (Hons) International Politics & Policy and Ancient History*
BA (Hons) International Politics & Policy and Archaeology*
BA (Hons) International Politics & Policy and Business Management*
BA (Hons) International Politics & Policy and Classical Studies*
BA (Hons) International Politics & Policy and Classics*
BA (Hons) International Politics & Policy and Communication & Media*
BA (Hons) International Politics & Policy and Criminology*
BA (Hons) International Politics & Policy and Economics*
BA (Hons) International Politics & Policy and Egyptology*
BA (Hons) International Politics & Policy and Film Studies*
BA (Hons) Irish Studies
BA (Hons) Irish Studies and Ancient History*
BA (Hons) Irish Studies and Archaeology*
BA (Hons) Irish Studies and Business Management*
BA (Hons) Irish Studies and Classical Studies*
BA (Hons) Irish Studies and Classics*
BA (Hons) Irish Studies and Communication & Media*
BA (Hons) Irish Studies and Criminology*
BA (Hons) Irish Studies and Economics*
BA (Hons) Irish Studies and Egyptology*
BA (Hons) Irish Studies and Film studies*
BA (Hons) Irish Studies and International Politics & Policy*
BA (Hons) Irish Studies and Politics*
LLB (Hons) Law
LLB (Hons) Law with Accounting and Finance*
BA (Hons) Law and Ancient History*
BA (Hons) Law and Archaeology*
BA (Hons) Law and Business Management*
LLB (Hons) Law with Business Management*
BA (Hons) Law and Classical Studies*
BA (Hons) Law and Classics*
BA (Hons) Law and Communication & Media*

BA (Hons) Law and Criminology*
LLB (Hons) Law with Criminology*
BA (Hons) Law and Economics*
BA (Hons) Law and Egyptology*
BA (Hons) Law and Film Studies*
BA (Hons) Law and International Politics & Policy*
BA (Hons) Law and Irish Studies*
BA (Hons) Law and Philosophy*
LLB (Hons) Law with Philosophy*
BA (Hons) Music
BA (Hons) Music and Ancient History*
BA (Hons) Music and Archaeology*
BA (Hons) Music and Classical Studies*
BA (Hons) Music and Classics*
BA (Hons) Music and Communication & Media*
BA (Hons) Music and Criminology*
BA (Hons) Music and Economics*
BA (Hons) Music and Egyptology*
BA (Hons) Music and Film Studies*
BA (Hons) Music and International Politics & Policy*
BA (Hons) Music and Irish Studies*
BA (Hons) Music and Law*
BA (Hons) Music and Popular Music*
BA (Hons) Music and Technology
BA (Hons) Philosophy
BA (Hons) Philosophy and Ancient History*
BA (Hons) Philosophy and Archaeology*
BA (Hons) Philosophy and Classical Studies*
BA (Hons) Philosophy and Classics*
BA (Hons) Philosophy and Communication & Media*
BA (Hons) Philosophy and Criminology*
BA (Hons) Philosophy and Egyptology*
BA (Hons) Philosophy and Film Studies*
BA (Hons) Philosophy and International Politics & Policy*
BA (Hons) Philosophy and Irish Studies*
BA (Hons) Philosophy and Music*
BA (Hons) Philosophy and Politics*
BA (Hons) Politics
BA (Hons) Politics and Ancient History*
BA (Hons) Politics and Archaeology*
BA (Hons) Politics and Business Management*
BA (Hons) Politics and Classical Studies*
BA (Hons) Politics and Classics*
BA (Hons) Politics and Communication & Media*
BA (Hons) Politics and Criminology*
BA (Hons) Politics and Economics*
BA (Hons) Politics and Egyptology*
BA (Hons) Politics and Film Studies*
BA (Joint Hons) Politics and International Business

* Honours Select (50:50) degree: choose two areas of strength and broaden your horizons and career options.

Degrees continue on the next page ➤

BA (Hons) Politics and Law*
BA (Hons) Politics and Music*
BA (Hons) Popular Music
BA (Hons) Popular Music and Ancient History*
BA (Hons) Popular Music and Archaeology*
BA (Hons) Popular Music and Classical Studies*
BA (Hons) Popular Music and Classics*
BA (Hons) Popular Music and Criminology*
BA (Hons) Popular Music and Egyptology*
BA (Hons) Popular Music and Film Studies*
BA (Hons) Popular Music and International Politics & Policy*
BA (Hons) Popular Music and Irish Studies*
BA (Hons) Popular Music and Law*
BA (Hons) Popular Music and Philosophy*
BA (Hons) Popular Music and Politics*
BSc (Hons) Psychology
BA (Hons) Sociology
BA (Hons) Social Policy and Ancient History*
BA (Hons) Social Policy and Archaeology*
BA (Hons) Social Policy and Business Management*
BA (Hons) Social Policy and Classical Studies*
BA (Hons) Social Policy and Classics*
BA (Hons) Social Policy and Communication & Media Studies*
BA (Hons) Social Policy and Criminology*
BA (Hons) Social Policy and Economics*
BA (Hons) Social Policy and Egyptology*
BA (Hons) Social Policy and Film Studies*
BA (Hons) Social Policy and International Politics & Policy*
BA (Hons) Social Policy and Irish Studies*
BA (Hons) Social Policy and Law*
BA (Hons) Social Policy and Music*
BA (Hons) Social Policy and Philosophy*
BA (Hons) Social Policy and Politics*
BA (Hons) Social Policy and Popular Music*
BA (Hons) Sociology and Ancient History*
BA (Hons) Sociology and Archaeology*
BA (Hons) Sociology and Business Management*
BA (Hons) Sociology and Classical Studies*
BA (Hons) Sociology and Classics*
BA (Hons) Sociology and Communication & Media*
BA (Hons) Sociology and Economics*
BA (Hons) Sociology and Egyptology*
BA (Hons) Sociology and Film Studies*
BA (Hons) Sociology and International Politics & Policy*
BA (Hons) Sociology and Irish Studies*
BA (Hons) Sociology and Law*
BA (Hons) Sociology and Music*
BA (Hons) Sociology and Philosophy*
BA (Hons) Sociology and Politics*
BA (Hons) Sociology and Popular Music*
BA (Hons) Sociology and Social Policy*
MPlan Town and Regional Planning
BA (Hons) Urban Regeneration and Planning

Foundation Certificate in Science and Engineering (page 36)

Chemistry pathway

Progress to the first year of:
BSc (Hons) / MChem (Hons) Chemistry
BSc (Hons) Environmental Sciences
BSc (Hons) Medicinal Chemistry
MChem Medicinal Chemistry with Pharmacology
BSc (Hons) / MOSci (Hons) Ocean Sciences

Computing pathway

Progress to the first year of:
BSc (Hons) Artificial Intelligence
BSc (Hons) Computer Information Systems
BSc (Hons) / MEng (Hons) Computer Science
BSc (Hons) Internet Computing
BSc (Hons) Electronic Commerce Computing
BSc (Hons) Financial Computing
BSc (Hons) Software Development

Earth Sciences pathway

Progress to the first year of:
BSc (Hons) Archaeology
BSc (Hons) Environmental Sciences
BSc (Hons) Geography
BSc (Hons) Geography and Oceanography
BSc (Hons) / MESci (Hons) Geology
MESci (Hons) Geology and Geophysics
BSc (Hons) / MESci (Hons) Geology and Physical Geography
BSc (Hons) Geophysics (Geology)
BSc (Hons) Geophysics (Physics)
BSc (Hons) Mathematics with Ocean and Climate Sciences

82%

of students who successfully completed a Foundation Certificate in 2015 received an unconditional offer from the University of Liverpool.

Engineering pathway

Progress to the first year of:
BEng (Hons) / MEng (Hons) Aerospace Engineering
BEng (Hons) / MEng (Hons) Aerospace Engineering with Pilot Studies
BEng (Hons) / MEng (Hons) Architectural Engineering
BSc (Hons) Artificial Intelligence
BEng (Hons) / MEng (Hons) Avionic Systems
BEng (Hons) / MEng (Hons) Civil Engineering
MEng (Hons) Civil and Structural Engineering
BSc (Hons) Computer Information Systems
BSc (Hons) / MEng (Hons) Computer Science
BEng (Hons) / MEng (Hons) Computer Science and Electronic Engineering
BEng (Hons) / MEng (Hons) Electrical and Electronic Engineering
BSc (Hons) Electronic Commerce Computing
BEng (Hons) / MEng (Hons) Engineering
BSc (Hons) Financial Computing
BSc (Hons) / MESci (Hons) Geology
MESci (Hons) Geology and Geophysics
BSc (Hons) / MESci (Hons) Geology and Physical Geography
BSc (Hons) Geophysics (Geology)
BSc (Hons) Geophysics (Physics)
BEng (Hons) / MEng (Hons) Industrial Design
BSc (Hons) Internet Computing
BSc (Joint Hons) Mathematics and Computer Science
BEng (Hons) / MEng (Hons) Mechanical Engineering
BEng (Hons) / MEng (Hons) Mechatronics and Robotic Systems
BSc (Hons) Software Development

Health Sciences pathway

Progress to the first year of:
BSc (Hons) Diagnostic Radiography
BSc (Hons) Occupational Therapy
BSc (Hons) Orthoptics
BSc (Hons) Physiotherapy
BSc (Hons) Radiotherapy

Life Sciences pathway

Progress to the first year of:
BSc (Hons) Anatomy and Human Biology
BSc (Hons) Biochemistry
BSc (Hons) / MBiolSci Biological Sciences
BSc (Hons) Biological and Medical Sciences
BSc (Hons) Bioveterinary Science
BSc (Hons) / MEcol Ecology and Environment
BSc (Hons) Environmental Sciences
BSc (Hons) Evolutionary Anthropology
BSc (Hons) Genetics
BSc (Hons) Geography
BSc (Hons) Human Physiology
BSc (Hons) / MMarBiol (Hons) Marine Biology
BSc (Hons) Marine Biology with Oceanography
BSc (Hons) Microbiology
BSc (Hons) Molecular Biology and Biotechnology
BSc (Hons) Pharmacology
BSc (Hons) Psychology
BSc (Hons) Tropical Disease Biology
BSc (Hons) Zoology

Physical Sciences pathway

Progress to the first year of:
MPhys Astrophysics
BSc (Hons) / MMath Mathematics
BSc (Hons) Mathematics with Ocean and Climate Sciences
MMath Mathematical Physics
BSc (Hons) / MPhys Physics
BSc (Joint Hons) Physics and Mathematics
BSc (Hons) Physics with Astronomy
BSc (Hons) Physics with Medical Applications
BSc (Hons) Physics for New Technology
BSc (Hons) Physics with Nuclear Science
BSc (Hons) Physics with Radiation Protection
MPhys Theoretical Physics

* Honours Select (50:50) degree: choose 2 areas of strength and broaden your horizons and career options.

Visit our online course finder

Please note that the available degree options are subject to change. Please visit our course finder online: kaplanpathways.degree/liverpool

Have any questions?

Contact our team for help and advice:

[? kaplanpathways.study/contact-lic](https://www.kaplanpathways.study/contact-lic)

Foundation Certificate in Business, Law and Social Sciences

Course options

2 terms

Entry level: at least 11 years of education* and UKVI IELTS 5.5 (minimum 4.5 in all skills)
Start: September, October, January, February, March
Tuition fees: £14,350

3 terms: Enhancement

Entry level: at least 11 years of education* and UKVI IELTS 5.5 (minimum 4.5 in all skills)
Start: September, October†
Tuition fees: £15,375

3 terms: Language

Entry level: at least 11 years of education* and UKVI IELTS 5.0 (minimum 4.0 in all skills)
Start: September, January
Tuition fees: £15,375

Lower IELTS?

If you do not meet the English language entry level for these course options, but have at least UKVI IELTS 4.0 in all skills, we can offer you a course that includes Extended English and Skills (EES). Contact us for more details about EES.

You will study the following modules:

Language for Study

- Academic English skills in listening, reading, writing and speaking

Skills for Study

- Academic and research skills
- Presentation, note-taking, report and essay-writing

Plus the modules in one of these pathways:

Business pathway

Business Management

- Aims, motivations and finances in modern business
- The public and private sectors

Business Organisations

- Challenges of modern business and the tools used to identify them
- Wider issues faced by business organisations

Economics in an International Context

- Theory and practice of how markets operate
- Factors influencing international trade and investment

Statistics

- Statistical theory and processes
- Applying statistical knowledge and techniques to real-world problems

Business and Mathematics pathway

Business Management

- Aims, motivations and finances in modern business
- The public and private sectors

Business Organisations

- Challenges of modern business and the tools used to identify them
- Wider issues faced by business organisations

Mathematics of Science and Engineering (double module)

- Modelling and reasoning skills
- Problem solving techniques
- Algebra, geometry, integration trigonometry, and differentiation

Law and Social Sciences pathway

Introduction to Legal Principles and Systems

- Legal world of modern Britain
- British legal systems

Introduction to Social Sciences

- Principles of anthropology, sociology, economics and political science
- The history of social science

The Individual, State and Society

- The individual and state in contemporary Western society

3-term students also study Enhancement or Language course modules:

3 terms: Enhancement

Basic Computing Skills

- Essential IT skills including Microsoft Office
- Modern computing topics
- Technology in industry and society

Introduction to British Society and Culture

- UK life and culture
- British society and history

Personal Development and Pre-Study Skills

- Study skills and basic numeracy
- Personal development

Plus one of the following modules depending on your degree choice:

Critical Analysis and Debate

- Application of critical thinking to a number of academic areas
- Applying critical thinking to different academic situations

Statistics

- Statistical theory and processes
- Applying statistical knowledge and techniques to real-world problems

3 terms: Language

Introduction to Academic English

- Understanding spoken and written academic English
- Presenting information in academic contexts

Introduction to Skills for Study

- Academic skills
- Comprehension and communication in English
- Investigations, reports, presentations and essays

Guaranteed entry to the University of Liverpool

You are guaranteed progression to the 1st year of a bachelor's degree at the University of Liverpool when you pass your Foundation Certificate at the required level with good attendance. Available degree subjects include:

- Accounting
- Business
- Finance
- Law
- Marketing
- Politics
- Psychology
- Sociology

For a full list of available degrees, please see page 30.

Your potential careers

- Accountant
- Business Manager
- Economist
- Financial Trader
- Human Resources Manager
- Insurance Broker
- Operations Officer
- Retail Banker
- Social Worker
- Tax Adviser

* 12-year requirement for some countries.
† 2.5 term (Enhancement) course starting in October.

Fees are accurate for the 2017/18 academic year, but subject to change for future years. Modules are subject to change.

Have any questions?

Contact our team for help and advice:

[? kaplanpathways.study/contact-lic](https://www.kaplanpathways.study/contact-lic)

Foundation Certificate in Science and Engineering

Course options

2 terms

Entry level: at least 11 years of education* and UKVI IELTS 5.5 (minimum 4.5 in all skills)
Start: September, October, January, February, March
Tuition fees: £15,350

3 terms: Enhancement

Entry level: at least 11 years of education* and UKVI IELTS 5.5 (minimum 4.5 in all skills)
Start: September, October†
Tuition fees: £16,605

3 terms: Language

Entry level: at least 11 years of education* and UKVI IELTS 5.0 (minimum 4.0 in all skills)
Start: September, January
Tuition fees: £16,605

3 terms: Maths and Science‡

Entry level: at least 11 years of education* and UKVI IELTS 5.0 (minimum 4.0 in all skills)
Start: September, January
Tuition fees: £16,605

Lower IELTS?

If you do not meet the English language entry level for these course options, but have at least UKVI IELTS 4.0 in all skills, we can offer you a course that includes Extended English and Skills (EES). Contact us for more details about EES.

You will study the following modules:

Language for Study

- Academic English skills in listening, reading, writing and speaking

Skills for Study

- Academic and research skills
- Presentation, note-taking and report-writing

Plus the modules in one of these pathways:

Chemistry pathway

Biochemistry of Life

- Essential concepts in organic chemistry
- Laboratory skills

Chemical Science (double module)

- Gases, liquids and solids
- Patterns in the periodic table, chemical bonding and energy changes
- Transition metals, solutions and pH

Physical Sciences

- Optics, waves and lasers
- Electronics and magnetism
- Thermal physics and thermal and mechanical properties of matter

Computing pathway

Algorithms, Programming and Data Representation

- Programming skills
- Practical core computing skills

Mathematics of Science and Engineering (double module)

- Modelling and reasoning skills
- Problem solving techniques
- Algebra, geometry, integration trigonometry, and differentiation

Physical Sciences

- Optics, waves, lasers, electronics and magnetism
- Thermal physics and thermal and mechanical properties of matter

Health Sciences pathway

Biochemistry of Life

- Essential concepts in organic chemistry
- Laboratory skills

Biological Science

- Reproduction, development and metabolism in animals
- Genetic and cellular principles

Introduction to Social Sciences

- Principles of anthropology, sociology, economics and political science
- The history of social science

Physical Sciences

- Optics, waves, lasers, electronics and magnetism
- Thermal physics and thermal and mechanical properties of matter

Life Sciences pathway

Biochemistry of Life

- Essential concepts in organic chemistry
- Laboratory skills

Biological Science

- Reproduction, development and metabolism in animals
- Genetic and cellular principles

Chemical Science (double module)

- Gases, liquids and solids
- Patterns in the periodic table, chemical bonding and energy changes
- Transition metals, solutions and pH

3-term students also study Enhancement, Language or Maths and Science course modules:

3 terms: Enhancement

Basic Computing Skills

- Essential IT skills including Microsoft Office
- Modern computing topics
- Technology in industry and society

Introduction to British Society and Culture

- UK life and culture
- British society and history

Personal Development and Pre-Study Skills

- Study skills and basic numeracy
- Personal development

3 terms: Language

Introduction to Academic English

- Understanding spoken and written academic English
- Presenting information in academic contexts

Introduction to Skills for Study

- Academic skills
- Comprehension and communication in English
- Investigations, reports, presentations and essays

Physical Sciences, Engineering and Earth Sciences pathways

Basic Engineering

- Principles of engineering and physics Mechanics and dynamics
- Properties of electrical circuits, thermodynamics and design

Mathematics of Science and Engineering (double module)

- Modelling and reasoning skills
- Problem solving techniques

Physical Sciences

- Optics, waves, lasers, electronics and magnetism
- Thermal physics and thermal and mechanical properties of matter

3 terms: Maths and Science

Preparatory Mathematics

- Algebra, geometry, trigonometry, graphs and transformations
- Applications of these topics

Preparation for Science and Engineering (double module)

- Key topics in biology, chemistry and physics
- Basic science
- Computing, language and study skills development

Guaranteed entry to the University of Liverpool

You are guaranteed progression to the 1st year of a bachelor's degree at the University of Liverpool when you pass your Foundation Certificate at the required level with good attendance. Available degree subjects include:

- Archaeology
- Aerospace Engineering
- Astronomy
- Biochemistry
- Civil Engineering
- Computer Science
- Genetics
- Mathematics
- Mechanical Engineering

For a full list of available degrees, please see page 32.

Your potential careers

- Aerospace Engineer
- Archaeologist
- Civil Engineer
- Clinical Biochemist
- Mathematician
- Mechanical Engineer
- Pharmacologist
- Research Scientist
- Software Engineer

* 12-year requirement for some countries.
† 2.5 term (Enhancement) course starting in October.

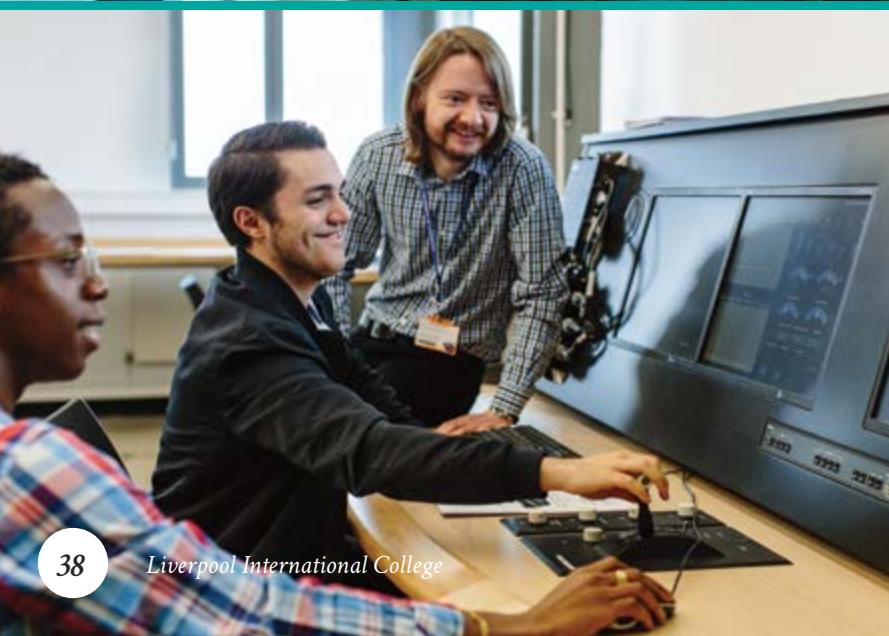
‡ Maths and Science course option is available for all pathways except Computing.

Fees are accurate for the 2017/18 academic year, but subject to change for future years. Modules are subject to change.

Have any questions?

Contact our team for help and advice:

[? kaplanpathways.study/contact-lic](https://www.kaplanpathways.study/contact-lic)



Your pathway to a master's degree

Study one of the following Pre-Master's courses for entry to a postgraduate degree at the University of Liverpool.

Course options

Pre-Master's in Business, Law and Social Sciences (page 42)

Pre-Master's in Science and Engineering (page 44)

Course progression

Pre-Master's

1-year
master's degree
at the University
of Liverpool

Graduate
with a master's degree
from the University of
Liverpool

Choose your master's degree

At the University of Liverpool

Pre-Master's in Business, Law and Social Sciences (page 42)

Business pathway

MBA (The Liverpool MBA)
MSc Accounting and Finance
MSc Entrepreneurship and Innovation Management
MBA Football Industries
MSc Human Resource Management
MSc International Business
Masters in Management
MSc Marketing
MSc Programme and Project Management
MSc Sports Business

Social Sciences pathway

MA Art, Aesthetics and Cultural Institutions
MSc Environmental Assessment and Management
MA International Relations and Security
MA Irish Studies
MSc Marine Planning and Management
MA Media and Communication
MMus Music
MA Music Industry Studies
MA Philosophy
MA / MCD Town and Regional Planning
MSc Urban Regeneration and Management

Law pathway

LLM International Human Rights Law
LLM Law
LLM Law, Medicine and Healthcare

99%

of students who successfully completed a
Pre-Master's in 2015 received an unconditional
offer from the University of Liverpool

Pre-Master's in Science and Engineering (page 44)

Science and Engineering pathway

MSc (Eng) Advanced Aerospace Engineering
MSc (Eng) Advanced Manufacturing Systems and Technology
MSc Big Data and High Performance Computing
MSc (Eng) Biomedical Engineering
MSc Advanced Biological Sciences
MSc Advanced Chemical Sciences
MSc Advanced Computer Science
MSc Advanced Computer Science with Internet Economics
MSc (Eng) Advanced Manufacturing Systems and Technology
MSc (Eng) Advanced Mechanical Engineering
MSc Computer Science
MSc Conservation and Resource Management
MSc (Eng) Energy and Power Systems
MSc Environment and Climate Change
MSc Environmental Sciences
MSc Geographic Data Science
MSc (Eng) Microelectronic Systems
MSc Palaeoanthropology
MSc Population and Health
MSc (Eng) Risk and Uncertainty
MSc (Eng) Sustainable Civil and Structural Engineering
MSc (Eng) Telecommunications and Wireless Systems

Science and Management pathway

MBA (The Liverpool MBA)
MSc Accounting and Finance
MSc Business Analytics and Big Data
MSc Digital Business Enterprise Management
MSc Entrepreneurship and Innovation Management
MSc Finance
MSc Financial Risk Management
MBA Football Industries
MSc Geographic Data Science
MSc Human Resource Management
MSc International Business
Masters in Management
MSc Management and Entrepreneurship
MSc Marketing
MSc Operations and Supply Chain Management
MSc Population and Health
MSc Programme and Project Management
MSc Sports Business



Have any questions?

Contact our team for help and advice:

[? kaplanpathways.study/contact-lic](https://www.kaplanpathways.study/contact-lic)

Visit our online course finder

Please note that the available degree options are subject to change. Please visit our course finder online: [kaplanpathways.degree/liverpool](https://www.kaplanpathways.degree/liverpool)

Pre-Master's in Business, Law and Social Sciences

Course options

2 terms

Entry level: minimum 3 years of higher education in a suitable subject and UKVI IELTS 5.5 (minimum 5.0 in all skills)
Start: September, January, February, April
Tuition fees: £14,250

Lower IELTS?

If you do not meet the English language entry level for this course option, but have at least UKVI IELTS 4.0 in all skills, we can offer you a course that includes Extended English and Skills (EES). Contact us for more details about EES.

You will study the following modules:

Language for Study

- Academic English skills in listening, reading, writing and speaking

Skills for Study

- Academic and research skills
- Presentation, note-taking, report and essay-writing
- Avoiding plagiarism

Research Design and Critique

- Theory of research design
- Planning and design of the research project

Research Project

- Organisational and planning skills for extended report writing
- Supporting arguments with evidence and text references

Plus the modules in one of these pathways:

Business pathway

Global Corporate Marketing Strategies

- Global corporate and marketing strategy
- Developing the marketing mix in a global environment

Theory and Practice of Strategic Management

- Key management theories and models
- Strategic leadership and management of strategic change
- Logical approaches to dealing with strategic business issues

Law and Social Sciences pathway

Social Science Principles

- Natural and social phenomena
- Social science theories

Plus one of the following modules:

European Liberal Democracy

- Liberal democracy as the dominant type of political system in Europe
- Relationship between politics and the media

Introduction to English, European and International Law

- Key areas of English, European and international law
- Legal principles and research techniques

Guaranteed entry to the University of Liverpool

You are guaranteed progression to a master's degree at the University of Liverpool, when you pass your Pre-Master's course at the required level with good attendance. Available degree subjects include:

- Business
- Economics
- Finance
- Law
- Marketing
- Management
- Media
- Philosophy
- Politics

For a full list of available degrees, please see page 40.

Your potential careers

- Accountant
- Counsellor
- Barrister
- Business Manager
- Human Resource Manager
- Management Consultant
- Newspaper Journalist
- Politician

Fees are accurate for the 2017/18 academic year, but subject to change for future years. Modules are subject to change.

Have any questions?

Contact our team for help and advice:

[? kaplanpathways.study/contact-lic](https://www.kaplanpathways.study/contact-lic)

Pre-Master's in Science and Engineering

Course options

2 terms
Entry level: minimum 3 years of higher education in a suitable subject and UKVI IELTS 5.5 (minimum 5.0 in all skills)
Start: September, January, April
Tuition fees: £14,250

Lower IELTS?
If you do not meet the English language entry level for this course option, but have at least UKVI IELTS 4.0 in all skills, we can offer you a course that includes Extended English and Skills (EES). Contact us for more details about EES.

You will study the following modules:

- Language for Study**

 - Academic English skills in listening, reading, writing and speaking

Skills for Study

 - Academic and research skills
 - Presentation, note-taking, report and essay-writing
 - Avoiding plagiarism
- Research Project (double module)**

 - Organisational and planning skills
 - Supporting arguments with evidence and text references
 - Research skills for postgraduate study

Statistical Design for Science and Engineering Research

 - Experimental design
 - Data handling, statistical methods and use of Excel

.....

Plus the module in one of these pathways:
Science and Engineering pathway

- Engineering, Science and Society**
- Relationship between science and society
 - Influence of religious beliefs and other factors on science

- Sciences and Management pathway**
- Theory and Practice of Strategic Management**
- Key management theories and models
 - Logical approaches to dealing with strategic business issues

Guaranteed entry to the University of Liverpool

You are guaranteed progression to a master's degree at the University of Liverpool, when you pass your Pre-Master's course at the required level with good attendance. Available degree subjects include:

- Biology
- Computer Science
- Economics
- Engineering
- Environmental Sciences
- Finance
- Management

For a full list of available degrees, please see page 40.


Your potential careers

- Aeronautical Engineer
- Biomedical Scientist
- Civil Engineer
- Economist
- Financial Trader
- Games Developer
- Marketing Executive
- Software Engineer

Fees are accurate for the 2017/18 academic year, but subject to change for future years. Modules are subject to change.

Have any questions?

Contact our team for help and advice:

 kaplanpathways.study/contact-lic

Application information

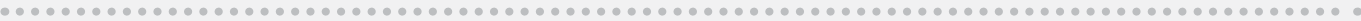
Follow the steps on the next page to find out how to apply to a degree preparation course at Liverpool International College.

.....



Next steps

Our global team of multilingual advisers will help you through the application process, with expert support at every stage. Apply online now or follow the steps below to complete the application form in this prospectus.



Apply online

Submit your application here:
kaplanpathways.study/apply-lic

Or apply using the application form

Complete all sections of the application form in this prospectus, indicate whether you also require accommodation, and sign to confirm that you agree to the terms and conditions:
kaplanpathways.com/uk-terms

Attach scanned copies of the required additional documents to your application form:

- Passport and previous UK visas
 - Your IELTS for UKVI (Academic) results
 - Academic transcripts
 - Certified translations if the originals are not in English
- Please note, if you do not have your academic transcripts or UKVI IELTS results, we can still make you a conditional offer.

Send your application and additional documents to one of the following:

- Application and Admissions Centre
 - Your education adviser
 - Local Kaplan country office
 - Kaplan representative

We will send you an admissions decision and offer letter within 24 hours of receiving your complete application.
Unconditional offer: there are no conditions to meet or additional documents to submit.
Conditional offer: there are certain conditions to meet and relevant documents to submit before acceptance.

After you apply*

Ensure you have the required funds to study in the UK.

You must have evidence of holding at least £1,015 for each month of your International College course, up to a maximum of 9 months, plus any unpaid tuition fees. This must be held in a recognised bank account for at least 28 days before you apply for your Tier 4 (General) student visa.

Accept your offer and book your accommodation.

Accept your offer and confirm your interest in college-arranged accommodation by paying your accommodation and tuition deposit together (or send a financial guarantee).

Confirm your insurance.

Please note, the insurance policy we offer will automatically be added to your study package, unless you show us proof of an alternative policy.

Receive your accommodation booking confirmation.

If you have paid your accommodation deposit, you will now be able to submit your preferred choice of room. We will then send you confirmation of your room allocation and tenancy agreement.

Receive your Confirmation of Acceptance for Study (CAS) statement.

For conditional offers, the CAS is sent once we receive proof that the conditions of the offer have been met.

Start the visa application process.

Visit gov.uk/ukvi to find out which documents you need to submit to your local British Embassy or High Commission.

Receive your visa, and ensure you have secured your accommodation.

Book your flight and submit your arrival details using our online arrival form.

Arrive in the UK and enjoy Welcome Week at the College!

* Process for Tier 4 students.

Contact us

Application and Admissions Centre | Kaplan International Pathways | 2nd Floor Warwick Building | Avonmore Road | London W14 8HQ, UK
T: +44 (0)20 7045 4925 | E: lic@liverpool.ac.uk | Find your local office: kaplanpathways.world

LIVERPOOL INTERNATIONAL COLLEGE APPLICATION FORM



A PERSONAL DETAILS

First name:	Gender: Female Male
Surname / family name:	Date of birth (dd/mm/yy):
Will you be under 18 when your pathway course is due to start? Yes No	
Permanent address:	
Postcode:	Country:
Telephone:	Mobile:
Email (primary):	Email (secondary):

B NATIONALITY, RESIDENCE AND FEE DETAILS

Country of birth:	Nationality:
Please attach a copy of your passport to your application.	
Second nationality (if you have one):	
Do you need a visa to study in the UK? Yes No	Have you ever been refused a visa to study in the UK? Yes No
Have you ever been granted a visa to study in the UK? Yes No	Have you ever been refused a visa to study in any other country? Yes No
How do you plan to fund your studies? I am self-funding or family-funded I have sponsorship from a government, organisation or individual I will be sponsored by a government, organisation or individual but have not yet received my sponsorship letter	

C EMERGENCY CONTACT (PARENT / GUARDIAN / NEXT OF KIN)

First name:	Surname / family name:
Relationship to student (e.g. father):	
Telephone:	Mobile:
Email (primary):	Email (secondary):

D PATHWAY COURSE AND DEGREE CHOICE

Choose your pathway course: Foundation Certificate in Business, Law and Social Sciences Foundation Certificate in Science and Engineering Pre-Master's in Business, Law and Social Sciences Pre-Master's in Science and Engineering	Preferred pathway course start date: Autumn (September–November) Spring (January–April) Summer (May–July)
Full title of your chosen degree at the University of Liverpool:	
Have you or an agent applied to the University of Liverpool directly? Yes No	

E EDUCATION HISTORY

Please list all schools, colleges and universities attended (continue on a separate sheet if necessary).				
Name of qualification	Dates attended (from–to)	Institution name	Country	Completed?
				Yes No
				Yes No
				Yes No

F ENGLISH LANGUAGE

Have you taken an IELTS for UKVI (Academic) exam? Yes No	Date taken:
Please attach your IELTS for UKVI (Academic) test results with your application (if you do not need a visa to study in the UK and have other English language qualifications, please also include these with your application)	

The application form continues on the next page.

G EMPLOYMENT HISTORY AND STUDY GAPS

Please detail what you have been doing between your latest completed qualification and now (if this period is longer than 6 months). This may include work, further studies or travel. Please also specify if any of these were undertaken in other countries.

Please attach copies of your CV, employer references, or any other study gap documents.

H ACCOMMODATION

Our college-arranged accommodation packages offer high-quality student housing for your university preparation course, and represent exceptional value for money. Please note, students selecting private accommodation will be subject to further immigration or tenancy checks.

Do you require college-arranged accommodation?	Yes	No
--	-----	----

I INSURANCE

Do you have comprehensive travel and health insurance for your university pathway course? Yes No

If yes, please submit a copy of your insurance policy document. If no, the insurance policy we offer will automatically be added to your study package. We will contact you with full details about the policy once your application has been accepted. Comprehensive insurance for the duration of your studies is compulsory. Failure to disclose relevant medical information might affect the validity of your insurance policy.

J MEDICAL INFORMATION

The International College is committed to equality of opportunity and aims to provide an inclusive learning environment for students with special needs or disabilities. To help us best support you, please provide as much information as you can on your particular needs.

Do you have any medical conditions? Yes No
If yes, please complete this form: kaplanpathways.com/additional-requirements

K DISCLOSURE OF CRIMINAL CONVICTIONS

Do you have any criminal convictions in any country — excluding spent convictions and minor motoring offences? Yes (you might be required to provide details) No

L DECLARATION

- I declare that the information I have supplied on and with this form is complete and correct.
- I understand that Liverpool International College may need to process and store my information in countries outside the UK (and not subject to UK Data Protection laws), such as the United States or other countries where we have offices or service providers.
- I consent to the transfer of my information to these other countries.
- I understand that the giving of false or incomplete information may lead to the refusal of my application or cancellation of my enrolment.
- I have read, understood and agreed to the terms and conditions and fees of Liverpool International College as outlined on the Liverpool International College website.
- I undertake to pay the fees incurred as they are due.
- I authorise Liverpool International College to supply any relevant data to the University of Liverpool and to supply official records of my progress at Liverpool International College to my parents, guardian, sponsor, agent or their nominee.
- I hereby consent to Liverpool International College contacting any school or institution at which I have previously studied in order to verify the information I have provided in the application, and hereby authorise such school or institution to disclose such information.
- I understand that signing this form gives permission to trained staff first aiders or any licensed hospital or physician to administer first aid if required for you or for your child if he/she is under 18 years of age.

I can confirm I have read, understood and agree to the declaration above:

Name: _____
Date: _____

To be completed by the applicant's parent or guardian if the applicant is under 18 years of age. I confirm I have read, understood and agree to the declaration above on behalf of the applicant:

Name: Date:	Agent name:	
	Counsellor name:	City:
	Agent stamp:	

M CHECKLIST AND ADDITIONAL DOCUMENTS

Please check you have supplied all the required information in this checklist:

1. Complete all sections of the application form: Yes
2. Confirm you agree to the declaration in section L: Yes
3. **Attach all additional required documents to support your application:**
 - Academic certificates and/or transcripts (with certified translations if not in English)
 - Proof of English level: UKVI IELTS results or equivalent (with certified translations if not in English)
 - Previous visas, residence permits, or CAS
 - Previous UK study attendance records and certificates
 - Passport(s) photo page – including passports or ID for multiple/secondary nationalities, if applicable
 - Sponsorship letter or financial guarantee
 - CV/Personal statement
 - Employment or study gap evidence
 - Other relevant documents
4. **Send your application and copies of supporting documents to:**
 - Your Kaplan representative; or
 - The Application and Admissions Centre; or
 - Your nearest country office.

See kaplanpathways.com/uk-apply for more details.

AGENT INFORMATION

Do you have an educational agent?	Yes	No
-----------------------------------	-----	----

Agent name:

Counsellor name:	City:
------------------	-------

Agent stamp:





Get in touch

☎ +44 (0)20 7045 4925

✉ lic@liverpool.ac.uk

🖱 liverpool.ac.uk/lic

Search: KaplanPathways



#KaplanLife

All information is correct at time of publication and is subject to change. Published December 2016.