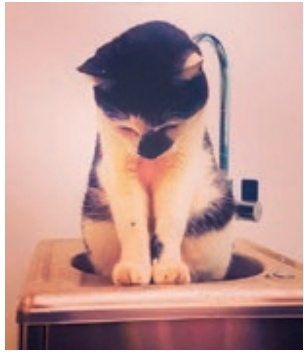
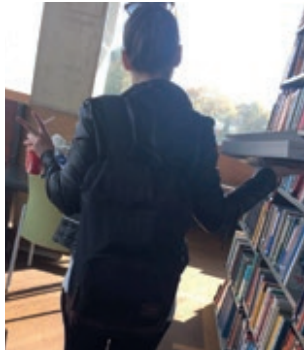
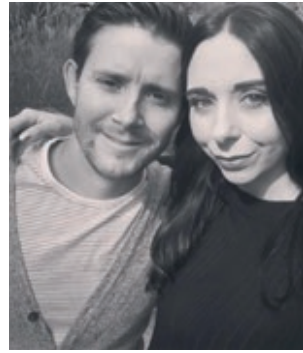
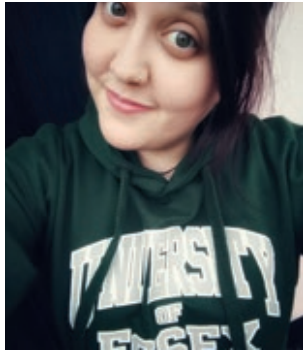




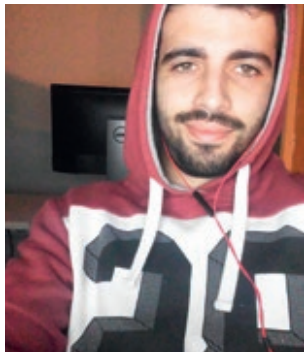
University of Essex

ESSEX

Undergraduate Prospectus 2019



For you.
By us.



THIS IS US ACCORDING TO THE STATISTICS

What the stats tell you is that at Essex we put equal emphasis on teaching and research. Our academics are daring, visionary thinkers who participate in internationally recognised research. They teach our students everything they learn because they want to inspire a new generation of experts – your generation.

**Rated
Gold**

Teaching Excellence
Framework 2017

15th

for the most
international
student community

Times Higher Education World
University Rankings 2017

Top 15

for overall student
satisfaction

National Student Survey,
2017 English mainstream
universities

4th

in the UK for
spend on services
and facilities

Times Good University
Guide 2018

25th

in the UK for
research quality

Times Good University
Guide 2018

Top 25

in the *Times*

Times Good University
Guide 2018

**But what are the stories behind
the statistics?**

YOUR ESSEX, YOUR WAY

Breaking news is making me **8**

Lauren Dorling, BA Multimedia Journalism, on why studying a subject she loves makes all the difference

Be who you are **10**

Essex graduate Jamie Raines talks about life at the University as a transgender student

Acting up **12**

East 15 graduate Robyn Grant shares how she made it into the limelight

Clothing with a conscience **14**

Fashion-fan Aaron Jones on being an ethical entrepreneur

The appliance of science **16**

Read how Salma Alarefi made the grade from Year 0 to PhD

Fancy a byte? **18**

Alumnus Ankit Mehrotra on life at Essex and the launch of his own app

IT'S ALL HERE FOR YOU

Our facilities **22**

Discover our brand new labs, sports facilities and more

Library view **24**

Will Whitehead, BA American Studies, on how he learns at Essex

Make something **25**

Perry James, BA Drama, on getting creative

Goal digging **26**

Go for gold or just get off the sofa – there's something sporty for everyone at Essex

Dive in **28**

Travel and learn new languages the Essex way

Think about it **30**

Get involved with research and topical debate with the THINK series

Go to work **32**

Employability at Essex; earn money, build your CV and kickstart your career

Your support **34**

How we can help

World class **36**

International students at Essex

And when it's all over **38**

Essex forever; graduation and beyond

WELCOME HOME

Colchester Campus **42**

Southend Campus **46**

Your new home **50**

Find out about University accommodation

Our Students' Union **54**

Essex living **56**

Alex Maxam, BA Multimedia Journalism, on his favourite things to do around Essex

MAKE IT HAPPEN

Open Days **60**

Apply to us **62**

Fees and funding **66**

OUR COURSES

All our courses **68**

Essex Pathways **168**

Our Year 0 courses

Enough about us, we'd love to hear from you **174**

Our UK partners **176**

Our great location **178**

Important information **180**

Index, credits and contact details **182**





YOUR ESSEX, YOUR WAY

At Essex you're more than a student, you're a member. Someone with genuine licence to shape what we do.

Our students make us what we are. When we say Essex dares to be different we can only make this claim because our students consistently choose to live life their own way.

Choose Essex for an education that's focused on you. Study here for more than a great degree. Learn to value opinions that differ and develop the confidence to make your own decisions.

See through our students' eyes. Read their own stories about life at Essex and meet the alumni we think of as inspirational. These are the people who defy convention, stop to ask why and never give up. Read on and perhaps you'll start to see how you can make our Essex, your Essex.



Lauren Dorling spent her summer working at the BBC. She tells us about how her degree has changed her life.

"I write as effortlessly as I breathe, but ask me how journalism makes me feel and I'll be at a loss for words. I fell in love with it during the most difficult period of my life and though it made the days no easier, it made each and every one worth it. Little did I know when I enrolled at the University of Essex that I would be on a course that would make me fall deeper in love every day. Studying multimedia journalism gave me a second home, a sense of identity and, perhaps most importantly of all, it showed me a side of myself I didn't know existed."

Building my career

"In my final year, I got the chance to intern for BBC HARDtalk. I assisted in and co-produced a series of shows and got to experience life as an insider at the UK's most renowned media organisation."

"Few moments will come close and I doubt even fewer will bring such clarity; for the day I stepped into Broadcasting House, I knew I would be back as an employee – for no other reason than I would make sure of it."

"The BA Multimedia Journalism did a lot for me as a person and as a journalist, but I am most thankful to it and the lecturers for making me, the shy first year with no self-confidence, believe in myself."

Find out more about how Essex can help you find work placements and support you throughout your career on pages 32-33.

For more inspirational stories from our students visit

essex.ac.uk/we-are-essex

"Multimedia journalism gave me a second home, a sense of identity and showed me a side of myself I didn't know existed."

Lauren at work in the news room.

BREAKING NEWS IS MAKING ME

BE WHO YOU ARE

Jamie Raines came out as transgender when he was 17, and began documenting his female-to-male transition by taking a selfie every day for three years and through vlogging on his YouTube channel.

Jamie saw no reason to tell his peers about his transition when he started his BSc Psychology course at Essex, until a TV company asked him to take part in a documentary *Born in the Wrong Body*. They created a time-lapse video from the photos, which was viewed more than 8.5 million times. Jamie said: "After the documentary, everybody was incredibly supportive, which shows how progressive Essex is – and it's trying to learn more."

Shaping the future


As an advocate for transgender rights, Jamie along with his fiancée Shaaba, created TRUE TO ME – a lifestyle brand for the LGBT+ community. Launched at an event hosted by our Vice-Chancellor, the couple were overwhelmed by the positive response and support at Essex. In an interview Shaaba explained: "We had the idea of creating wristbands with pronouns on, so people could wear the pronouns they want their friends or colleagues to use."

Among a range of other merchandise with pronouns, TRUE TO ME also has a blog and an advice forum to help members of the community and aims to move the focus away from 'sex changes' and 'surgery' which dominates the media – and towards the acceptance of who you are.

Giving back

The couple donate 20% of everything they make back into the transgender community to support those that are going through a transition. Jamie has recently started a PhD in Psychology at Essex.

You can visit truetome.co.uk, subscribe to Jamie's Youtube channel Jammidodger and follow him on Twitter [@jammi_dodger94](https://twitter.com/jammi_dodger94)



“Everybody was incredibly supportive, which shows how progressive Essex is – and it’s trying to learn more.”



ACTING UP

“You learn by doing in this industry. I didn’t leave drama school with a headshot, I left with a show and a theatre company.”

Robyn Grant, centre, wielding guitar
Image from *Tom and Bunny Save the World*,
Fat Rascal Theatre.

Meet Robyn Grant. She runs Fat Rascal Theatre and is an East 15 graduate. Here’s how Essex made the difference for her.

“Fat Rascal is a company run by women; we challenge the constraints of being a female within the industry. Since leaving East 15 we have not stopped making work.

Turning a dream into reality

“I knew that I wanted to be an actor but I also wanted to make my own work. After researching drama school courses and feeling like I’d have to settle with either doing acting or directing, the BA in Acting and Contemporary Theatre jumped out at me as the perfect solution.

Sharing creativity

“The writing element of the course was something completely new to me and I absolutely loved it. Working with East 15 alumna and established playwright Charlotte Josephine was such a brilliant experience. She was massively inspirational and coached me on writing my musical *Buzz*.

“Whilst being on the course we worked with a lot of different artists and creatives. So many doors were opened within the world of theatre making. You learn by doing in this industry. I didn’t leave drama school with a headshot, I left with a show and a theatre company.

Raising support

“We used the University of Essex’s brilliant Click crowdfunding platform to raise money to take *Buzz* to the Edinburgh Fringe in 2016. There’s so little money in this business, having that first push can go a huge way!”

Click supports Essex student and graduate entrepreneurs, having funded over 130 projects. Have a look at what’s currently looking for funding here click.hubbub.net

CLOTHING WITH A CONSCIENCE

Aaron Jones, BSc International Enterprise and Business Development, is the style star behind a truly inspirational fashion line.

It was while volunteering in Cambodia that Aaron was shocked into making a stand. He noticed many children missed out on school, working to contribute to the family income instead. He knew he had to act.

Making a contribution

On his return to Essex Business School he dipped into his student overdraft to the tune of £600 and launched Fikay Fashion. Fikay supplied those Cambodian families with sewing machines and employed the parents to make their designs. A portion of all Fikay's profits was donated to the Fikay Foundation, which contributed to the building of a school.

From entrepreneur to businessman

Aaron's passion for fashion is unstoppable and he has now launched See Fashion, an analytics firm which uses AI to track customer journeys, helping them find the clothes they really want.


Royal recognition

In 2016 Aaron received a British Empire Medal (BEM) in the Queen's Birthday Honours for his services to ethical fashion. He comments: "Being an entrepreneur is about being bold, tenacious and challenging the norm. None of this would have been possible without the support of our customers and the support of the University of Essex."

If you want to make a difference while you're at Essex, you can volunteer with the Students' Union vTeam. Find out more here essexstudent.com/volunteering

"Being an entrepreneur is about being bold, tenacious and challenging the norm."





“My passion for engineering was born and bred at Essex.”

THE APPLIANCE OF SCIENCE

Salma Alarefi came to Essex as a Year 0 undergraduate student. Through hard work and dedication, she’s now a PhD student – and was recently shortlisted at the prestigious STEM for Britain awards. This is her journey.

Salma came to Essex from Gharyan, Libya with a place on the Year 0 course for BEng Telecommunication Engineering. She spent her first year honing her English language skills, learning the basic theories which would be the building blocks of her degree and forging a deep bond with the University. “My passion for engineering was born and bred at Essex.”

Paving the way for a successful career path

“I always loved studying maths and physics. During my foundation year I was given the opportunity to witness the application of mathematics theory to the solution of practical engineering problems. It was all I ever wanted to do.”

Salma also took part in the Big Essex Employability Awards. These awards recognise extracurricular achievement and are verified by the Higher Education Achievement Report (HEAR). The HEAR is recognised by all employers as a true account of a student’s whole experience at university. “I developed key skills ranging

from time management, organisational skills to leadership which will help me excel in my future career,” explains Salma.

Influential research

At the moment, Salma is continuing her studies, on her way to completing a PhD in renewable energy technologies. Her research has been recognised by STEM for Britain, an annual competition which invites young scientists to present their work at the Palace of Westminster.

Salma comments “[It] was a truly enjoyable event. I had a marvellous opportunity to discuss my research with MPs, academics and like-minded researchers, who in turn showed a great interest in my project and highlighted the positive contribution of my studies towards the future management of the UK’s natural resources.”

Already thinking of postgraduate life? As an Essex graduate you may be entitled to a discount on your studies. See here essex.ac.uk/masters

Salma Alarefi. At home in the lab.

FANCY A BYTE?

Dineout is a little restaurant reservation app – which has helped over three million diners find a table. Co-founder and BEng Computers and Telecommunications Engineering graduate Ankit Mehrotra tells us how it happened.

Having established a successful investment banking career in the City, Ankit decided to leave the nine-to-five behind and return to India. After the launch of Top Table, the UK restaurant reservation website, he spotted an opportunity to launch a similar service in his home country. He knew it was a risk, but his Essex degree had given him the self-belief he needed to make the leap.

Building an empire

Dineout was launched across eight cities in India in 2012. The company expanded into Dubai and Singapore and in 2014 was acquired by Times Internet Ltd. Ankit remains at the helm, overseeing a team of around 400 employees.

Providing the foundations for success

Ankit credits Essex with honing his business acumen. Not only did the flexible degree structure allow him to take optional modules on finance, but the learning style was completely different to his previous experiences. “School in India was all about reading books and cramming. At Essex, I learnt to question everything and find out the answers for myself. I worked for the Students’ Union, joined the gliding society and the cricket club too and made friends from all over the world. Studying at Essex is about your whole life experience.”

Find out more about how Essex can support your career plans while you study and even after you graduate
essex.ac.uk/life/careers

“School in India was all about reading books and cramming. At Essex, I learnt to question everything and find out the answers for myself.”





**Libraries.
Lecture halls.
Robot arenas.
Cats*.
Let's show
you around.**

***okay, only one cat.**

**IT'S
ALL
HERE
FOR
YOU**

Our facilities offer you the opportunity to pursue your interests and meet people from across the University. Want to make films? We have professional-grade studios and editing suites. Want to pump iron? Take advantage of our first-class gym. Want to take some time out? Watch the tropical fish swimming around our coral reef (also the site of important research, you understand). Check out what's on our campuses and if you have any questions, email us at admit@essex.ac.uk. But before you ask - he's called Pebbles and he does live on our Colchester Campus. Follow his adventures at facebook.com/EssexCampusCat



OUR FACILITIES

The latest addition to the Colchester Campus is our new £13.2m **STEM building**. It will include a 180-seat wet lab for Biological Sciences and a 150-seat IT-rich exploratory learning space to enable collaboration between students across the Faculty of Science and Health.



Our campuses are growing and making more room for you. Here's a mere snapshot of what we offer.

Our brand new £12m **Essex Sport Arena** has 1,655 seats and international standard facilities suitable for staging televised sporting events. The Arena contains eight badminton courts, three basketball courts, three netball courts, five volleyball courts and two futsal courts.



The **Silberrad Student Centre** offers 24/7 access to a combination of IT-rich areas and study pods for group work. The Centre is also home to our Student Services Hub – your one-stop-shop for finance and support services.



We have state-of-the-art **teaching facilities for healthcare students**, including a functioning hospital ward with robot patients that can simulate a range of medical conditions. The new space also includes six consultancy rooms which are equipped with cameras to be used for practice consultations.



Reflecting our commitment to responsible business practice in both teaching and research, **Essex Business School** in Colchester is a zero carbon building. It features a winter garden, café and lots of breakout spaces for post-lecture discussions.



Our **Albert Sloman library** in Colchester overlooks the lakes and houses some of the UK's finest collections, providing fascinating insight into Latin America, Russia and Eastern Europe. At Southend, the **Forum library** is a vibrant, contemporary space with outstanding learning facilities.



LIBRARY VIEW

Will Whitehead, BA American Studies

"Essex's Albert Sloman library is, without a doubt, my favourite study spot on campus. Studying in the striking Brutalist building (which is home to one of only two paternoster lifts left in the UK) makes you feel like a part of something truly significant, thanks to its impressive design and enormous presence on campus.

"Something about being surrounded by books is amazingly calming, and the enormous windows provide an incredible view of the whole campus. That's one of my favourite things about the library: no matter where you sit, you look out onto something inspiring.

"It also has an astonishing collection of books. Novels and textbooks I've never been able to find at any local libraries or bookshops are everywhere at the University's library, so if you're a bibliophile, this is the place for you.

"If I have a deadline coming up, some reading to do, or just fancy some quiet time, the library is my go-to spot. Plus if you get bored you can ride the paternoster for a bit."

However you want to study, you'll find the right spot at Essex. Book a campus tour, or visit us virtually

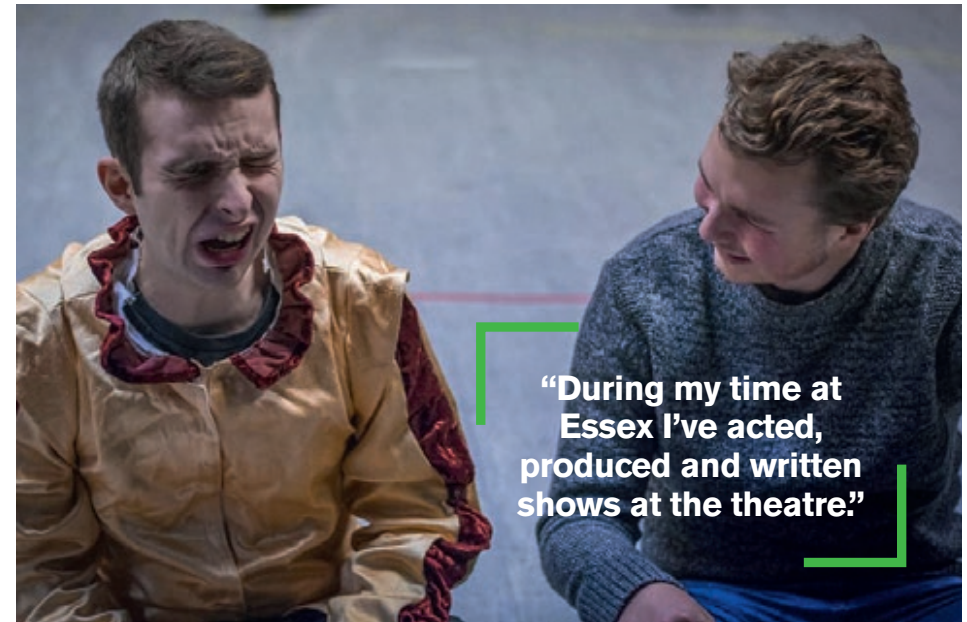
essex.ac.uk/visit-us/campus-tours

Across the lake from the library.

Photo credit: Sagnik Banerjee,
@daydreamer_sagnik. Essex student.



"One of my favourite things about the library: no matter where you sit, you look out onto something inspiring."



"During my time at Essex I've acted, produced and written shows at the theatre."

MAKE SOMETHING

Perry James, BA Drama

"As a drama student, the Lakeside Theatre is like a second home! Whether it's taking part in a student show or watching a professional show, the Lakeside is always a hive of theatrical activity.

"During my time at Essex I've acted, produced and written shows. One of my highlights was when I collaborated with my classmates to produce *A Number* by Caryl Churchill. It was my job to make sure the show ran smoothly.

"I've also been lucky enough to take part in a marketing internship there over the summer. This was part of the Frontrunners scheme where students get the chance to work in an area of the University that suits them.

Work experience in a theatre is often hard to find so this was an amazing opportunity."

The Lakeside Theatre, Colchester and the Clifftown Theatre, Southend showcase student and professional productions, while the Art Exchange and Hex galleries host touring exhibitions. For students who want to write and perform there are further opportunities through the Students' Union media outlet, Rebel. If you have a creative muscle, flex it at Essex.

More at
lakesidetheatre.org.uk
artexchange.org.uk
rebelessex.com

In performance at The Lakeside.
Perry is on the right.



GOAL DIGGING



“I’ve never considered myself a particularly sporty person but in my second year I decided to try out hockey and I stuck with it.”



Whether you’re a keep-fit newbie or a wannabe Olympian, the sports facilities at Essex will help you reach your full potential.

The Essex Sport Gym is the most popular sporting facility on campus, offering 160 workout stations and 60 fitness classes a week, while the new £12m Essex Sport Arena offers even more room for running around.

Try something new, we dare you

If you want to try a new sport but don't want to join a team, Active Sessions are open to all and free for Essex Sport members. Allowing you to try a new sport without committing to regular training, Active Sessions are a great way to have fun. The SU's Just Play scheme offers drop-in sport sessions each week, massive one-off events and 'Learn To' courses to get you started.

For those who want more, our Students' Union is home to the Essex Blades – 44 sports clubs who compete locally and nationally. Olivia Burns (pictured) is a BA Psychology student. "I've never considered myself a particularly sporty person but in my second year I decided to try out hockey and I stuck with it. It's such a laugh training and playing games with the girls and we've even been able to play on the Olympic pitch!"

Top of your game

Participating in sport at Essex is a great way to boost your employability. We can support your personal development in sport, offering coaching opportunities in an official or volunteer capacity. There are work placements within Essex Sport, while our partnerships with sports organisations and strong links with numerous national governing bodies means we can give you the practical experiences that will make your CV stand out.

If your sporting dreams involve Olympic glory, we are an accredited Sport England Talented Athlete Scholarship Scheme (TASS) centre, able to offer an annual package of support and funding worth £2,750 for athletes nominated by their National Governing Body in around 25 sports. Undergraduates can also receive sports bursaries worth up to £3,000 per year, aimed at those looking to combine education with the pursuit of a sporting career following graduation.

Visit essex.ac.uk/life/sport for more on keeping fit at Essex.

DIVE IN

Study or work abroad, learn a new language – enjoy a world of opportunity at Essex.

You're going to get really good at packing your suitcase. At Essex, you can study or work abroad as part of your degree. Emma Ward is a BSc Marine Biology student. She has spent time in Indonesia, taking part in a study on tropical seagrass beds and their interaction with tidal cycles. But her globetrotting didn't stop there. "For my placement year, I chose to head to the island of Samos, Greece, to join the Archipelagos conservation team." In Samos Emma took part in a number of conservation activities, collecting data on turtle populations and dolphin strandings.

A helping hand from Essex

For Emma, her placement year was "an exceptional experience" and one she would highly recommend. Every year Essex students receive various scholarships and grants to support their overseas (or indeed, under-seas) adventures. You can study for a term or full year at a partner university and choose to undertake a language teaching assistantship or opt for a work placement.

Find your language

Emma also took the opportunity to learn Greek during her year abroad, but if you're more of an armchair traveller, you can learn a new language from the comfort of the campus. Our innovative Languages for All programme gives Essex students the opportunity to learn a language alongside their degree, at no extra cost, for one year.

It's more than just a degree

"Get the most you can from your university experience," advises Emma. Immersing yourself in another culture is certainly one way of making your time at Essex more memorable. And there's no doubt that someone who shows they're willing to try something new will always stand out from the crowd when it comes to job hunting. So come to Essex – and then leave us behind. We won't mind *sniff*.

If you're interested in work placements in the UK, turn to page 32.

Find out more about opportunities for travel at essex.ac.uk/undergraduate/study-abroad and for language study at essex.ac.uk/language-learning

"Get the most you can from your university experience."

Emma Ward underwater in Indonesia.

THINK ABOUT IT

“It was great to have the opportunity to explore a subject in more depth.”

See more clearly.
Find out more about what you like.



Go where your curiosity leads you. Get involved in current research or share your views at our **THINK** series of debates.

THINK series

Throughout the year the THINK series of debates engages with the issues that matter today. Open to all, each debate welcomes a guest speaker to introduce a topic before the floor is opened for discussion. From sex work to Brexit and mansplainers to rogue traders, nothing is off limits. Having won the Guardian University Award for Student Experience in 2016, the THINK series continues to challenge convention at every opportunity.

Undergraduate Research Opportunities Programme (UROP)

For those who are interested in earning money while honing their research skills, Essex offers you the opportunity to get involved in current projects through our Undergraduate Research Opportunities Programme (UROP).

Punk art

BA Films Studies and Art History student Keith Salter participated in research into punk artist Gee Vaucher. “The objective of the project was to bring together Gee Vaucher’s work and understand the events that influenced her in order to present her

first major UK exhibition. I was able to research all aspects of Gee Vaucher’s work, its roots and the impact that it had. I explored past events which inspired her work, such as the Aberfan mining disaster and also looked into the reactions to her artwork for 1970s punk rock band CRASS. My research contributed to the content of an exhibition at a gallery in Colchester and provided further understanding of Gee Vaucher’s motivations.”

Looking to the future

Keith found the project satisfying on both personal and academic levels. “Punk art is currently an area that isn’t widely researched, and it’s also an area of significant personal interest to me, so it was great to have the opportunity to explore this area in more depth. Engaging with punk art is an exciting experience and delving into the dark recesses of the punk past was a tremendously rewarding process. I can now use my research findings to underpin my future essays or a dissertation or thesis.”

If you want to know more about UROP visit essex.ac.uk/urop and find out what’s the next THINK subject under discussion at facebook.com/UOEthink

GO TO WORK

“One of the things I really appreciate at Essex is that it’s given me a chance to get a wide range of work experiences.”



Finding work after graduation can be tough. So at Essex we do everything we can to make your dream career happen.

Frontrunners and Internships

Essex students can take part in three extra-curricular work experience schemes. Essex Interns will help you find a paid internship over the vacations. UROP (Undergraduate Research Opportunities Programme) allows you to gain paid research experience on campus. Frontrunners is our award winning short-term placement scheme that offers you the opportunity to undertake paid, career relevant employment within the University while you study. Take the chance to develop the skills that will make you stand out from the competition once you graduate.

Placements

Most of our degrees offer an option for a placement year, giving you the opportunity to gain relevant, real-world experience. The Essex Employability and Careers Centre and online CareerHub+ is our on-campus job shop, which offers advice on improving CVs, careers fairs, internships and much more.

Employability skills

We ensure employability skills are embedded throughout your studies with many degrees offering the option of placement and

employability modules. You can also highlight your extracurricular activities on your Higher Education Achievement Report (HEAR) through the Big Essex Award. The Big Essex Award helps you identify and sell the skills employers look for and loads of different activities can count, from part-time work, to volunteering and contributing to SU societies. Your HEAR is recognised by employers across the country and is the perfect way to showcase your unique experiences and qualities.

Continued support

Essex students benefit from other unique opportunities, such as our Click crowdfunding platform, career mentoring programme, and start-ups programme while our graduates have access to support from the Employability and Careers Centre for three years after graduation. Forget the career ladder, as an Essex graduate you'll simply soar above the competition.

For everything you need to know about careers, employability and placements visit essex.ac.uk/life/careers

“One of the things I really appreciate at Essex is that it’s given me a chance to get a wide range of work experiences. There are plenty of flexible jobs on our campuses, created for students.

“During the first year I worked in the kitchen at Blues, a food outlet on campus. It was great fun...I will never forget our serenades over the carbonara sauce! In the second year I got promoted to Student Supervisor, which gave me a chance to gain experience managing a small team. It was challenging but I definitely learned a lot.

“Now I’m in my final year and I’m working as a Student Recruitment Marketing Fronrunner. It’s a creative role with a variety of tasks I can get involved with, including blogging, social media, photography and interviewing students!”

Ania Romankiewicz, BA Modern Languages

YOUR SUPPORT

Whether you're a full-time or part-time student, live on campus or further afield – whenever and wherever you need help, we're here for you.

Student services

Our Student Service Hub is a one-stop shop for practical advice or confidential guidance, on everything from IT services to how to cope with homesickness. We provide support if you are experiencing mental health difficulties and have a specialist team available to help you. We also offer a Peer Mentor Scheme, where we can match you up with another undergraduate who's been there, done that and can help you settle into University life.

Mature students

Around 37% of our student body are mature students, so we have a real understanding of the challenges that come when combining studies with other responsibilities. Mature students are automatically enrolled into the Mature Students Network, with free access to a range of social, welfare and academic support networks. We also have a day nursery on our Colchester Campus which offers a discounted rate to students with little ones.

Disability

If you have a disability, medical condition or specific learning difficulty an adviser will be on hand to talk you through alternative exam arrangements, lecture recordings, assistive software, access and more. You'll also have a specific contact within your department and SU Disabled Students' Officer to represent you within sports and societies.

Commuting students

If you travel to one of our campuses to study, socialise and play sport, you're not alone. We have many students living in the local area and beyond who make that regular daily trip, and it's important to know that everything on campus is for you too. We have many facilities to make sure you're able to join in with University life to the full.

To see the full range of services we offer visit essex.ac.uk/life/student-services

"When I first visited and saw the beautiful, open campus, met the kind staff and students, and saw my department – I realised I would really enjoy myself here, and I have."

"At Essex the atmosphere is very positive and welcoming, and the University makes it clear that it cares about its students' success in every aspect, including education and wellbeing. It keeps students engaged and offers countless opportunities for students to get involved in uni and in the community which I think is extremely important."

Kimia Aghasoleimani, BSc Biomedical Science



"When I first visited Essex and saw the beautiful, open campus, met the kind staff and students, and saw my department I realised I would really enjoy myself here, and I have."



Kimia can help.
Her t-shirt says so.

WORLD CLASS

“I hang around with people from different regions of the world, and sometimes I get to sing French songs with my French mates too!”



At Essex you join a global learning community. Study an internationally relevant curriculum taught by academics whose research has international impact.

Support with your studies

We help you get the most out of your studies by providing a range of tailored support, including academic skills and English language classes. Our academic departments also provide support services, with most offering one-to-one tutorials with lecturers and running student mentoring schemes.

Welfare and community

Our Student Services Hub is on hand to offer advice on funding, immigration, housing and healthcare. We provide facilities for religious worship on campus and will do all that we can to make Essex feel like home.

As a member of our Students' Union you'll discover our growing number of societies, including nearly 40 international societies that celebrate the culture of our global community.

Well-connected

Essex is awesome, but we understand you may want to explore a little further whilst you're here. We have excellent road and rail links to London, with frequent trains from both Colchester and Southend and a journey time of under an hour.

All three campuses are within two hours of London Heathrow, London Gatwick and London Stansted airports and are served by frequent airport transfer coach services. Southend Airport flies to a number of popular European destinations.

Essex family

Drawn from around 140 countries, we think of our 95,000 alumni as family. So we like keeping in touch. We organise professional networking events and reunions all over the world and will always want to hear your news.

Get in touch

Visit essex.ac.uk/international or email us your questions about being an international student to admit@essex.ac.uk


“I'm currently in my second year of my degree and loving every bit of it. Coming to Essex from India, it was one big challenge but I've been overwhelmed with support from my tutors and friends.

“Computers are my first love, although I also love travelling, writing poems and meeting new people. I hang around with people from different regions of the world, and sometimes I get to sing French songs with my French mates too!

“In my first year I was paired with a peer mentor because I didn't know where to go when I had problems. She helped me get through my assignments and got me more involved in my department. I wanted to help students facing similar issues. So I thought why not help people and volunteer to be a peer mentor myself? It makes me really happy to get people on track.”

Nupoor Singh, BSc Computer Science

AND WHEN IT'S ALL OVER...

A woman with long brown hair is seen from the side, reaching up to place a black graduation cap on the head of a large, colorful giraffe sculpture. The giraffe is covered in intricate, multi-colored patterns. The background is a clear blue sky with some green foliage visible at the bottom.

You'll be one of a 95,000-strong alumni community that stays in touch and meets regularly all over the world. You'll also have free access to the CareerHub+ after graduation, free access to academic journals and discounts on further study. Take a look at what our alumni are up to

essex.ac.uk/alumni





WELCOME HOME

Lifelong friendships will most definitely be made. But your favourite mug might get broken.

Pancake brunches. Board game marathons. Assignment all-nighters. Your new flatmates will be with you for every moment of your new student life – there to celebrate the good times and pick up the pieces on the not-so-great days (quite literally if they break your mug). Have a look at our student accommodation and start packing for moving day.

If you're going to live away from home for the first time, you couldn't choose a better place than Essex. There's plenty to do on our campuses, lots of places to explore nearby – and London is just down the road. So what are you waiting for? Go ahead and make yourself at home.



CAMPUS LIFE: COLCHESTER



42



Top deck. Top pies. Enjoy lunch on board the NO.64.
Photo credit: Dominic Bashford, @dom_bash. Essex student.



“My favourite night on campus has to be Milk It on Mondays; karaoke and cheesy tunes, what more could you want?”

Ellie Matthews, BA Sociology

“Our Colchester Campus is so varied that students are never bored. There’s always something happening, like the weekly street market on Thursdays where I love buying cake from the bakery stall. Or in the evenings my friends and I often go to Cine10 where we can watch the latest films for a fraction of the cost of the cinema.

“During the week, I love treating myself for lunch to the grilled halloumi burger from Fusion or one of the pies from the NO.64 bus café which overlooks the lakes.

“My favourite night on campus has to be Milk It on Mondays in the SU bar; karaoke and cheesy tunes, what more could you want? I still haven’t had the courage to sing yet, but who knows? This year might be it!

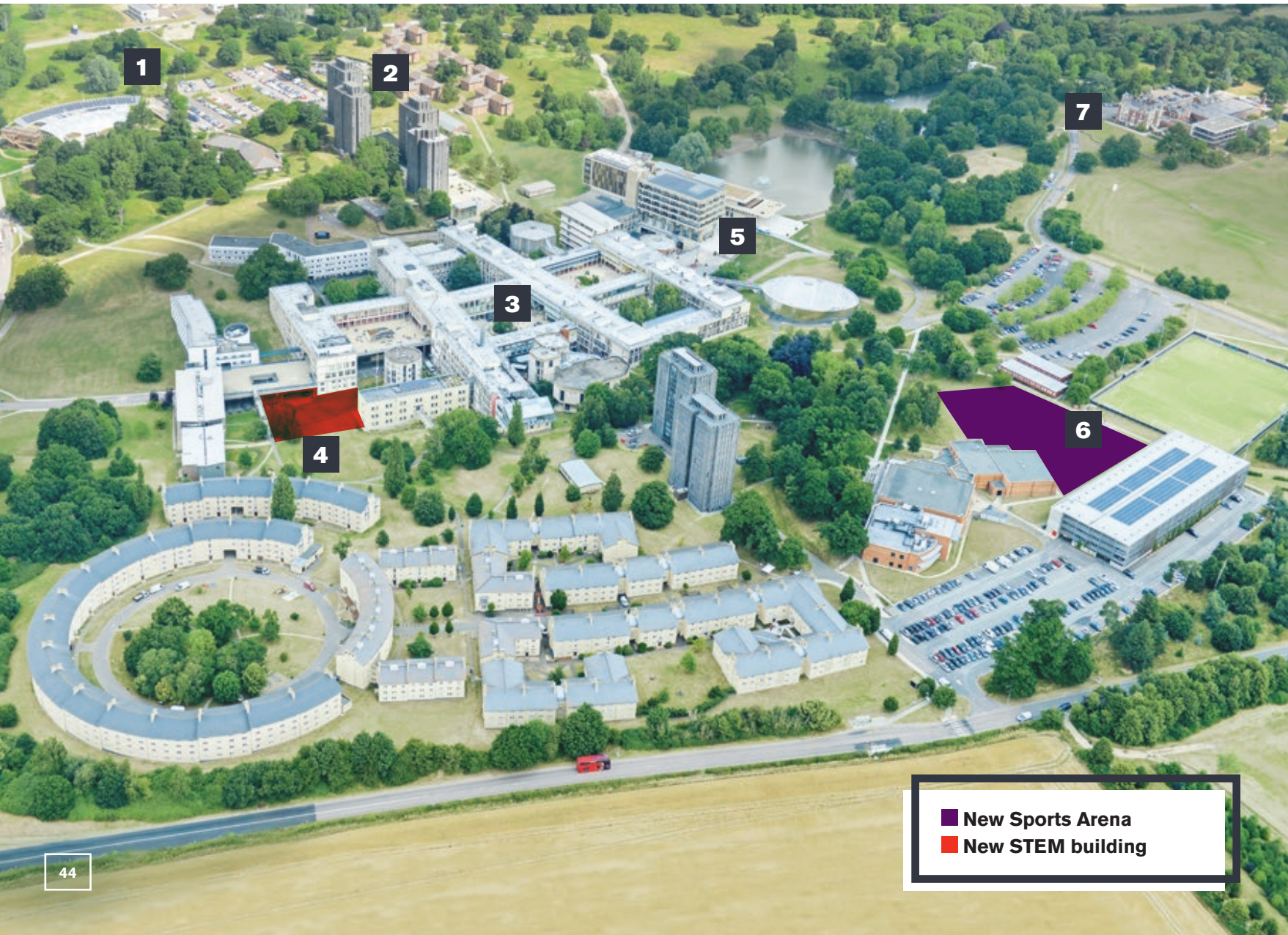
“And for those who want to add a little bit of culture to their lives, there’s always the Hex which has weekly art and music classes, or Lakeside Theatre where you can watch fellow students performing plays. Every year I watch the pantomime that the students put on at Christmas!”

The dancefloor is filled.
Guess they weren’t playing *Despacito*.



43

COLCHESTER CAMPUS



1 North-west campus

- University Quays accommodation (10-minute walk from central campus)
- The Meadows accommodation (5-minute walk from central campus)
- Essex Business School
- Day Nursery
- Knowledge Gateway

2 North campus

- North Towers accommodation
- The Houses accommodation
- Health Centre
- Tony Rich Teaching Centre
- The North Teaching Centre

3 Central campus

- Lecture Theatre Building
- Academic departments
- Lecture and seminar rooms
- Students' Union
- Bars, cafés and restaurants
- Shops, banks and Post Office
- Information Centre

4 South campus

- South Towers accommodation
- South Courts accommodation
- Brand new STEM building

5 East campus

- Ivor Crewe Lecture Hall
- Silberrad Student Centre and SU Creative Studios
- Albert Sloman Library
- Lakeside Theatre and Café
- Art Exchange
- Waterstones bookshop
- Parkland and lakes

6 South-east campus

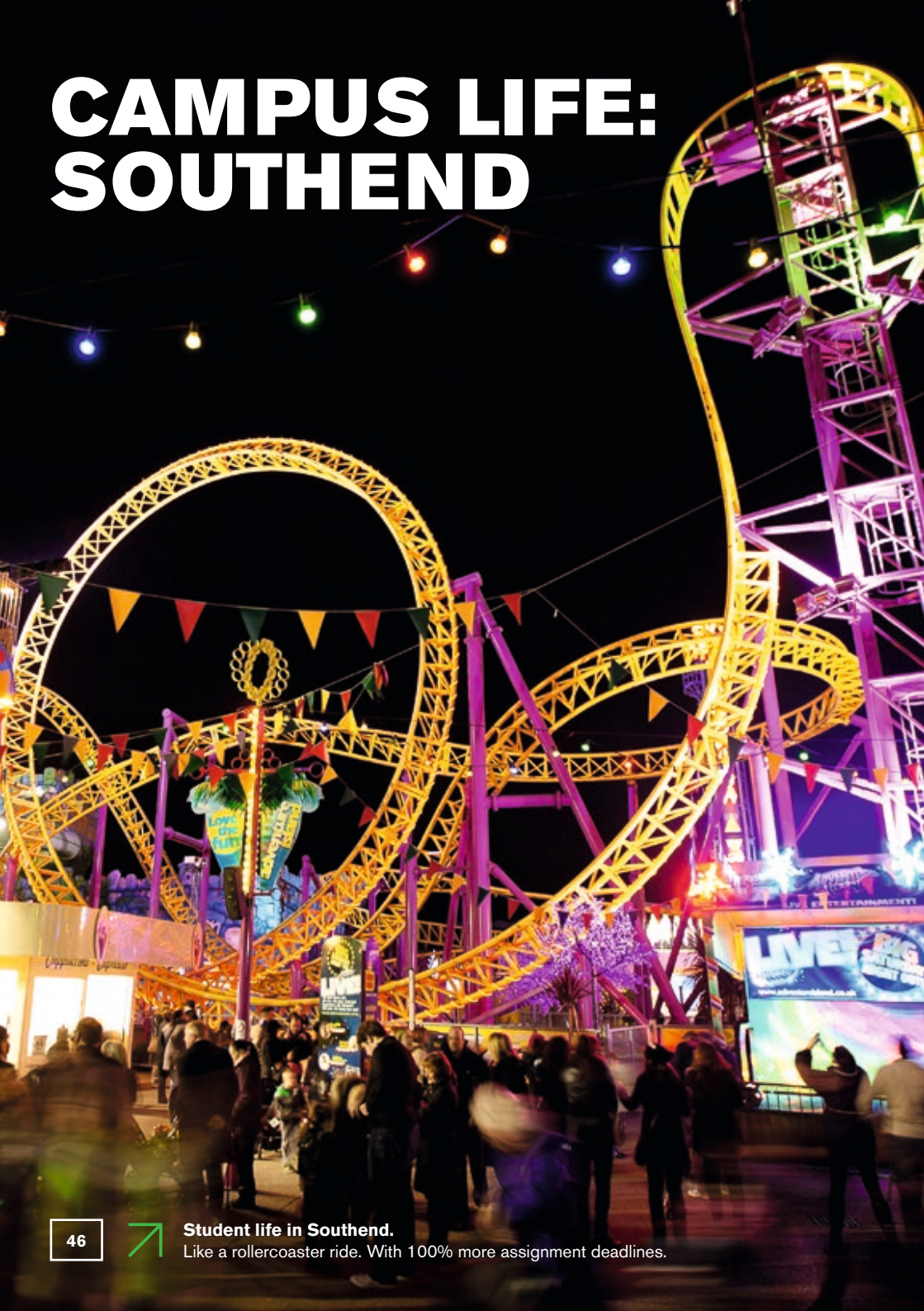
- Tennis courts
- Synthetic turf pitch
- Sports Centre
- Evolve Gym
- Brand new Sports Arena

7 Wivenhoe Park

- Wivenhoe House Hotel
- Edge Hotel School
- ESCALA Space
- Campus allotment
- Sports pitches and parkland

■ New Sports Arena
■ New STEM building

CAMPUS LIFE: SOUTHEND



46



Student life in Southend.

Like a rollercoaster ride. With 100% more assignment deadlines.



Ernest Nyarko, Students' Union Vice-President Southend

"Southend-on-Sea might seem a quiet seaside town, but you'll be surprised at how much happens here! With the longest pier in the world and a massive funfair memorable moments are guaranteed.

"During my time here, Southend has offered opportunities to learn and excel academically and professionally – as well as a great student experience. With a small and diverse student community of just over 1,300 students it is easy to get to know each other, access support services and meet with your academics.

"Our town is equipped with two fantastic theatres, great nightlife and a vibrant high street that caters for everyone. You'll have access to a variety of restaurants with cuisines from all over the world on your doorstep. Of course, plenty of grocery stores are nearby for those who prefer to cook at home.

"The SU Lounge – our own venue/café – is exclusively for Essex students and our friends, with super low prices on food and drinks, comfy sofas, game consoles and a whole host of board games. It's our hub, our place to meet up every day and I always love spending time there.

"Throughout the year we have BBQs, parties, fireworks, cultural celebrations, live entertainment, inspirational guest speakers and competitions. Without any doubt, I'd recommend Southend as your place of study."

Are you up for foosball?
No spinning. You know the rules.



47

SOUTHEND CAMPUS



1 Southend Pier



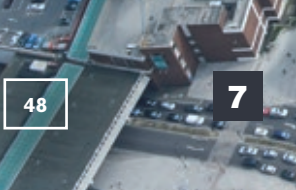
3 The Gateway Building



5 Southend High Street



4 University Square accommodation



2 The Forum



6 Pitttlewell Square gardens

1 Seafront

- Southend Pier
- Adventure Island amusement park
- Beach and promenade

2 The Forum

- 24/7 access to The Learning Hub
- Student Services
- Public and academic library
- Lecture and seminar rooms

3 The Gateway Building

- Academic departments
- In-house doctor and dentist
- Lecture and seminar rooms
- Southend Central train station (50 minutes to London)

4 University Square

- University Square accommodation
- Supermarket
- International shops

5 Southend High Street

- Cinema
- Cafés and restaurants
- Post Office
- Chain stores and independent shops

6 Clifftown

- Clifftown Theatre and Studios
- Pitttlewell Square gardens
- The Railway Hotel music venue

7 Victoria Gateway

- Southend Victoria train station for travel to Colchester, London, and Southend Airport for flights all over Europe

1

6

3

2

5

4

7

48

49

New memories. New adventures.

Living on campus

Moving away, possibly for the first time, can feel daunting. But don't worry, we offer a variety of University accommodation so that you can find the perfect one for you.

Included in your rent is wifi, heating, hot water, contents insurance, electricity and the cleaning of communal areas (such as kitchens) – so no need to argue about whose turn it is to Hoover! Rooms are normally let for the full academic year from late September to the end of June, which means that even if you're away from the University during the winter and spring vacations, you don't have to remove your things from your room.

Most flats are mixed-gender, although single-gender flats are available, and we offer some single-occupancy adapted rooms. We have a limited amount of self-contained accommodation which is suitable for either single or double occupancy. We cannot guarantee accommodation for first year students who are accompanied by a partner, but we'll do our very best to help. Just make sure you get in touch as early as you can if you think you need to talk about any of this with us.

E admit@essex.ac.uk

Guaranteed accommodation

You are guaranteed accommodation for your first year of study – just make sure you've had your place confirmed, your accommodation application is received by the published deadline, and you accept your offer of study.

Living nearby

The Students' Union offers a free house-finding service from our Colchester Campus. They provide support for everyone moving off campus, complete property and landlord checks to ensure your safety, and help you find your ideal rented properties, all free of charge.



➤ Before pretty bare.



➤ After bare pretty.



YOUR NEW HOME

essex.ac.uk/accommodation

South Courts

Size: 1,218 rooms
Cost per week: £144.13-146.23
Location: Colchester Campus

4-12 rooms per flat, en suite facilities, some adapted rooms available



University Quays

Size: 766 rooms
Cost per week: £133.49-159.18
Location: Colchester Campus

7-8 rooms per flat, en suite facilities



The Towers

Size: 1,142 rooms
Cost per week: £81.83-93.87
Location: Colchester Campus

13-16 rooms per flat, shared showers and toilets



The Houses

Size: 267 rooms
Cost per week: £130.55-133.49
Location: Colchester Campus

4-6 rooms per flat, en suite facilities, some adapted rooms available



The Meadows

Size: 228 townhouse rooms plus 420 flats with en suite rooms
Cost per week: £140.63-147.63
Location: Colchester Campus

12 rooms per townhouse with lounge/kitchen. 5-7 rooms per flat with shared kitchen



University Square

Size: 497 rooms and 64 studio flats
Cost per week: £143.92-177.59
Location: Southend Campus

11 rooms per flat, en suite facilities, studio flats have own kitchenette, some adapted rooms available



Settling in

Our Residence Life team helps to create a welcoming and friendly community for you to live and learn in. You'll have a Residents' Assistant based in your area of accommodation who'll meet you soon after you arrive. They'll make sure that you have

opportunities to get involved in University life and social activities, and provide support outside of office hours. We offer a safe and secure living environment with support available 24-hours a day.

E admit@essex.ac.uk

These figures show the current cost per week of our accommodation. It's likely that our rental charges for 2019-20 will increase from these current prices. We'll publish the new prices on our website as soon as they are available.

essex.ac.uk/accommodation

OUR STUDENTS' UNION



Studying at the University of Essex means being part of our award-winning Students' Union. Here's what makes it stand out.

Our SU run an entire student town on our Colchester Campus, complete with shops, cafés, bars, a nightclub, restaurants and even a hair salon. If you're based in Southend you can grab a coffee, play Xbox or PlayStation and chill out between lectures at our new SU Lounge.

Heirloom

When you join our Students' Union you'll receive your customisable Heirloom charm. Each Heirloom is inscribed with a number, which is passed on from alumni to undergraduate. That shared number shows that Essex students are a community, united by their desire to make a difference.

Shape everything

Students run the SU. You decide what gets stocked in our stores, what drinks we serve in our bars, and what we campaign for together. Whatever you want to do, we're here to make it happen. Nothing is too big or too small.

Get involved

At Essex, we want you to challenge everything and push yourself, but why stop in the classroom? Our Students' Union offers membership to over 100 societies, catering to every taste. We even have a Harry Potter society. Plus, if we really don't have a group for you, we'll help you set-up your own.

Stay active

Sport more your thing? We have over 40 teams, from those you might expect like football, rugby and netball plus some sports you may have never tried before. From fencing to MMA, we've got plenty to keep you busy.

What's on

University shouldn't be all work. We'll make sure you're never bored at Essex with activities day and night to keep you occupied. Our cinema shows the latest films, we have quizzes in the SU Bar, open forums for heated debates and so much more.

Read the Students' Union pledges at essexstudent.com

"The Students' Union is one big family. You can pretty much do anything with your time here: join a society, volunteer, get a part-time job...even have a radio show!"

"SU Change Week puts control into students' hands and encourages us to think about how we can make a difference. A group of students did a 24-Hour Hackathon to work out the best way to make those changes happen. The work everyone did was so impressive."

"In my first year I became a member of Student Media, and then became Editor-In-Chief of Rebel, the student magazine, in my second year. If you join a society the chances are you'll find like-minded people and make loads of friends, and then they'll introduce you to other societies...the possibilities are endless!"

Rowena Field-Carter, BA History

ESSEX LIVING



Alex Maxam, BA Multimedia Journalism, shows us some of the best bits of Essex.

The seaside at West Mersea.
This is genuinely how pretty the
beach huts are.



"Living in Colchester is a unique experience. It's a quirky town with lots going on. From Colchester Zoo to Tenpin to gigs and comedy nights at Colchester Arts Centre, there are plenty of things to do if you've got a free day.

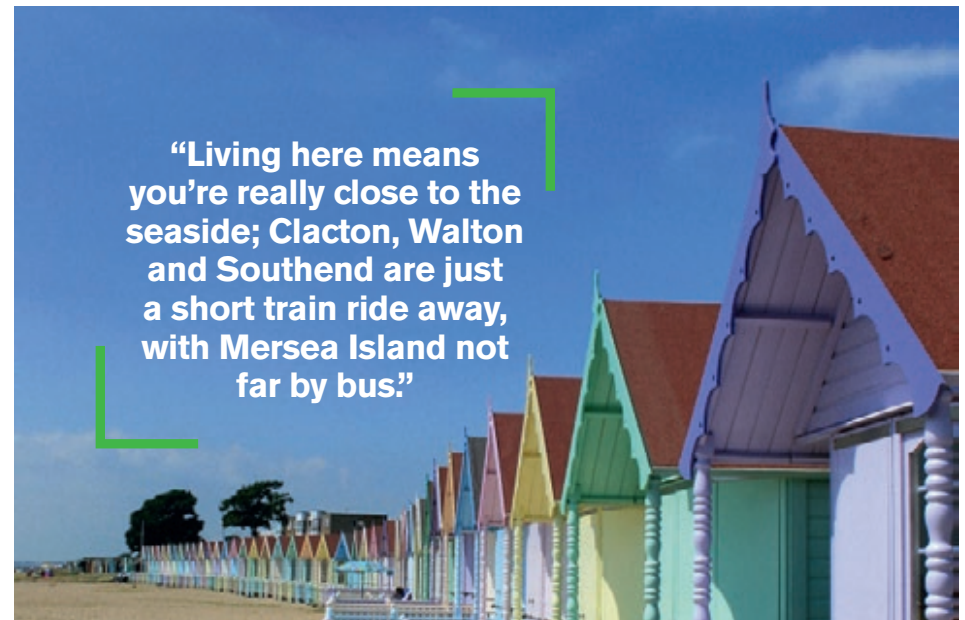
"There's the town centre, with its range of shops and restaurants that's constantly growing. Outside of that there's a whole host of places, Jump Street being a stand-out choice. If you love trampolines, dodgeball and all-round fun, then that's the place to go.

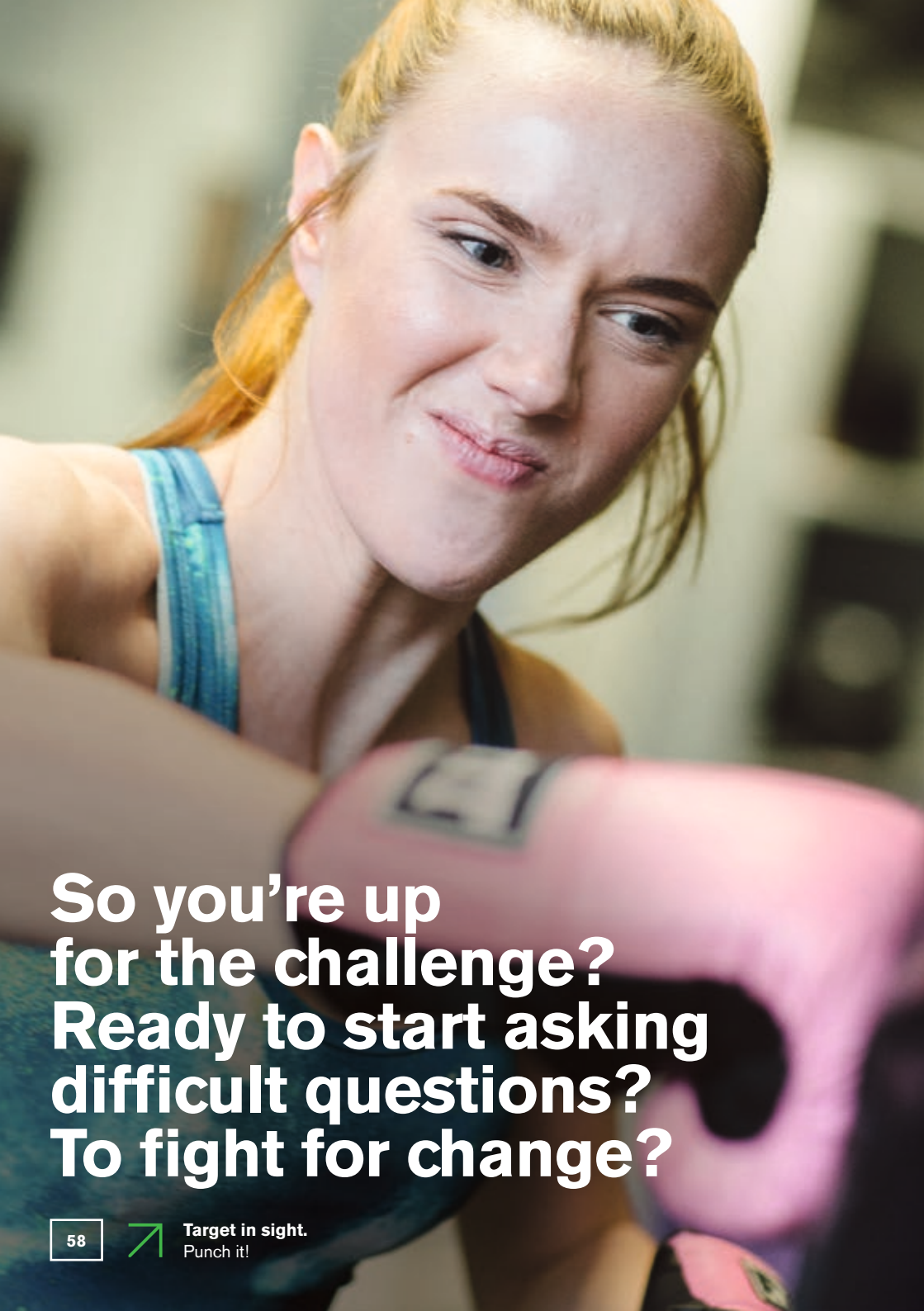
"Living here means you're also really close to the seaside; Clacton, Walton and Southend are just a short train ride away, with Mersea Island not far by bus. Although Walton pier was an early favourite for me, Clacton's pier has really grown on me. There's just so much

to do – whether you're burning through 2ps in the arcade or smashing into others on the dodgems. Crabbing off the jetty in West Mersea is also an absolute must on a warm summer evening.

"But it's not only the seaside nearby – London itself is only an hour on the train. You're close enough to have a full day out there while not having to worry about the cost of living in London. From Shoreditch to Central, the city is your oyster."

"Living here means
you're really close to the
seaside; Clacton, Walton
and Southend are just
a short train ride away,
with Mersea Island not
far by bus."





MAKE IT HAPPEN

**So you're up
for the challenge?
Ready to start asking
difficult questions?
To fight for change?**



Of course you are – that's why you're still reading this.

Here's the nuts-and-bolts information you need about our Open Days, financing your studies and making an application to study at Essex.

And if you're ready to sign on the dotted line, head to

essex.ac.uk/ug/applying-to-essex



OPEN DAYS

We all know what an open day is, right? Your chance to meet your department, look around campus, find out about student finance. You probably think an Essex Open Day is just the same. Of course, we'll show you all the important stuff, but why stop there? You don't know open days until you've experienced an Essex Open Day.

Meet world-class academics and like-minded students. Laugh with family. Find your new home. Experience taster lectures. Get out of your comfort zone and try something new. Drink tea and eat cake, copious amounts of cake. Hear other people's stories and start yours. Experience an Essex Open Day.

Colchester Campus

**23 June 2018
15 September 2018
27 October 2018**

Southend Campus

20 October 2018

Can't make an Open Day?

Don't worry – contact us and we can arrange a campus tour for a date that suits you. Or, if you can't visit, you can take a 360° tour online to get a taste of life at Essex.

E tours@essex.ac.uk
essex.ac.uk/visit-us/campus-tours

APPLY TO US

Applying to Essex is straightforward. We make things as easy for you as possible, so you can get on with the important business of planning your Essex experience.



How do I apply?

Applications for the majority of our courses should be made online via UCAS. See subject pages for exceptions:

- Hotel management and events management with hospitality, Page 118
- Therapeutic care foundation degree, Page 152

ucas.com

When should I apply?

If you're applying from the UK or EU for October 2019 entry, you should send your application to UCAS by 15 January 2019, although we normally consider applications after this date, subject to the availability of places on the relevant course. If you live outside the EU, you should aim to send your application to UCAS by 30 June 2019.

Next steps

Once we receive your application from UCAS it is considered by our Admissions Team. When making a decision on your application, we take into account a range of factors, including GCSE performance, AS-level results (if taken), subjects taken at A-level, BTEC (or equivalent qualifications), predicted grades, your personal statement and your academic reference.

UCAS will officially inform you when a decision has been made on your application. You'll also receive information from us if we make you an offer. Once you've received a decision from all your choices, UCAS will ask you to accept one offer as your firm (first) choice and one offer as your insurance (second) choice via UCAS Track.

Applicant Days

If you're based in the UK, you'll have the opportunity to visit us during an Applicant Day. These days offer you the chance to find out more about your course, meet our staff and students and have a look around our campuses. Some of our departments interview their applicants during an Applicant Day. These interviews can take different formats depending on your subject, and are an opportunity for us to find out more about you and vice versa. We'll send you all the information you need beforehand. If you're not resident in the UK but would like to visit our campuses, we would love to show

you around. Weekday tours can be booked through our website. Alternatively, you can take a look online at our 360° campus tours. essex.ac.uk/visit-us/applicant-days
essex.ac.uk/visit-us/campus-tours
E tours@essex.ac.uk

Confirming your place

If your offer is conditional and you go on to meet the conditions specified in the offer, we'll confirm your place. If your results don't quite meet the conditions, we may still confirm your place, but this depends on the results and the availability of places. If you don't meet the conditions of your offer and don't secure a place on your chosen course, you may be offered an alternative course. You also may be offered a Year 0 Essex Pathways degree (see page 168). Our decision is usually made within a few days, once we have received all the information we need, and you'll be notified by UCAS.

Deferred entry

The majority of our courses enable you to take a gap year. You can apply in the normal way during 2018-19, but should indicate your year of entry as 2020 on your UCAS application. Applications for deferred entry will be considered on the same basis as those for entry in October 2019.

Second-year entry

We're happy to consider applications for entry to the second year of study for most of our courses. For direct entry to the second year, we would normally expect you to achieve at least 55-60% overall in your first year modules of a comparable course at another institution. Contact our Undergraduate Admissions Office for further information.

E admit@essex.ac.uk

Other things to consider

Some courses require you to undergo a Disclosure and Barring Service check (DBS), when working with children and/or vulnerable adults, and a Work Health Assessment.

When you apply you can declare whether you have a disability or health issues so we can provide support. We have a team of disability and wellbeing advisers, dyslexia tutors, and other specialist staff.

Entry requirements

UK STUDENTS

Typical entry requirements are described on each subject page of this prospectus. Visit our online Course Finder for additional information.

essex.ac.uk/subjects

The wide range of qualifications that we consider include the following:

- A-levels
- BTEC qualifications
- International Baccalaureate Diploma and Diploma Programmes
- QAA-approved Access to HE Diplomas
- Open University courses
- Professional qualifications

Our typical offer will require specific grades in three A-levels (or equivalent) for most courses, although we consider additional qualifications. For example, if your results fall short of the offer level by a small margin, your result in the Extended Project or an additional AS-level will be taken into account. We want you to stand the best chance of benefiting from an Essex education. We will also consider your application if you are re-taking one or more exams.

This applies to students taking modular A-level examinations and those taking the reformed linear A-level examinations. For further information on our policy regarding qualifications reform, visit our website.

essex.ac.uk/ug/applying-to-essex

GCSE REQUIREMENTS

Our general entrance requirements are a minimum of two full A-levels and five GCSEs at grade C/4 or above, including English, or equivalent. Some courses also have additional GCSE subject requirements which you'll find on the relevant subject pages. If you don't currently meet our GCSE requirements, contact our Undergraduate Admissions Office for advice.

[E admit@essex.ac.uk](mailto:admit@essex.ac.uk)

EU AND INTERNATIONAL STUDENTS

If you're from outside the UK, we are more than happy to make offers based on EU and international qualifications that are considered equivalent to our standard A-level offer. Contact our Undergraduate Admissions Office for more information on specific qualifications.

[E admit@essex.ac.uk](mailto:admit@essex.ac.uk)

Up-to-date information is also available on our online Course Finder.

essex.ac.uk/subjects

IMMIGRATION AND APPLYING FOR A VISA

If you're applying from outside the European Economic Area and require a visa to study in the UK, you'll need to apply under Tier 4 of the UK Government's Points Based Immigration System (PBIS).

We are required to ensure compliance with UK Home Office regulations as a Tier 4 Sponsor. In some circumstances, we may be unable to make an offer or issue a CAS if an applicant is unable to meet all Tier 4 requirements, including when there have been changes to these requirements made by the UK Home Office. Refer to our webpage for information about immigration and applying for a visa.

essex.ac.uk/immigration

ENGLISH LANGUAGE REQUIREMENTS

You are required to have GCSE English at grade C/4 or above (or equivalent). You can demonstrate your level of English language by achieving a specified score in IELTS or another equivalent test that we accept. You don't need to achieve this level before making your application, but it will be one of the conditions of your offer. See the table opposite as a guide.

For full details of our University's English language requirements, including UK Visas and Immigration minimum component scores, visit:

essex.ac.uk/see/ug-intl-english

(for applicants who require a Tier 4 visa)

ENGLISH LANGUAGE REQUIREMENTS

Point of entry	Course(s)	IELTS (academic version)
Pre degree (Home and EU only)	Cert HE courses*	5.0
	Courses with a Year 0 pathway	5.5
First year	All courses*†	6.0
Second year	All courses*†	6.5

*Note that students who need a Tier 4 visa to study in the UK must meet the UK Home Office Visas and Immigration's minimum English language requirements, including component requirements.

†Note that BA Multimedia Journalism, BSc Nursing, BSc Physiotherapy, BSc Occupational Therapy, BSc Speech and Language Therapy and BA Social Work have different English language requirements. See relevant subject pages for further details.

essex.ac.uk/see/ug-eu-english

(for EU/EEA/Non-Tier 4 applicants)

Contact our Undergraduate Admissions Office for further information about these and other English language tests that we accept.

[E admit@essex.ac.uk](mailto:admit@essex.ac.uk)

Pre-sessional and English language courses

We offer pre-sessional English language courses at the University of Essex International College (in partnership with Kaplan) which can be taken before your degree if you are an EU student and do not meet our English language entry requirements. Our courses will help you improve your English. Upon successful completion of the pre-sessional you will be able to proceed on to your degree course without having to retake IELTS. To find out which is the best pathway for you visit our website.

essex.ac.uk/pre-sessional

East 15 Acting School

If you apply for a course at East 15 Acting School, you must apply directly to East 15 as well as UCAS. Most courses require you to attend an audition, interview or technical theatre assessment.

east15.ac.uk

Further information

For information about the University's Undergraduate Admissions Policy visit our website.

essex.ac.uk/admissions-policy

Undergraduate Admissions Office

[E admit@essex.ac.uk](mailto:admit@essex.ac.uk)

T +44 (0)1206 873666

FEES AND FUNDING

Your tuition fees are invested to provide you with a transformational education. They help us to create the stimulating and cutting-edge environment that supports the world-class research and education we offer at Essex.

UK and EU students

TUITION FEES

The tuition fees for 2019-20 have not yet been confirmed. We will publish them on the website as soon as they are available.
essex.ac.uk/fees

For reference, the fees for UK and Channel Islands students commencing their studies in 2018 were set at £9,250.

In previous years, the tuition fee has increased for each academic year of study. The 2018 fee was frozen but we do not know yet if, or when, this will change. Previous increases were limited to the annual increase in the RPI-X index.

Fees for full-time undergraduate students with a Home fee status (which currently includes EU students*) remain subject to UK Government approval.

*The fee status of EU students may be subject to review should the terms of the UK's withdrawal from the European Union change the legal status of EU students.

ACCESS TO LOANS

Taking out a loan can feel like a big financial commitment, so we want to make sure you know exactly how it works. The UK Government provides UK and EU students with a tuition fee loan (subject to eligibility criteria), meaning you do not need to pay tuition fees upfront or during your course.

Following the UK's decision to withdraw from the European Union and at the time of publication, the UK Government has not yet confirmed whether EU students starting in 2019 will be eligible for a loan for the duration of their course. Further information will become available once confirmation from the UK Government has been received.

If you're a UK student you can also take out a maintenance loan, which helps cover living expenses while you're at university. You only start repaying your loan once your income reaches a certain level, and if your income drops below this, you'll stop making repayments – so you don't need to worry about not keeping up.

If you're an EU student, we encourage you to research financial support offered in your home country. National grants or loans may be provided by your government or local careers service.

www.gov.uk/student-finance

International students

TUITION FEES

Our international fees for the academic year 2019-20 are:

- Full-time undergraduate degree courses £14,020 to £16,170
- Foundation Degree in Oral Health Science £30,073 (including placement)

essex.ac.uk/fees

For students commencing their studies at the University of Essex in the 2019-20 academic year, your fees will increase for each academic year of study. This annual increase will be 5% or the annual increase in the RPI-X index, whichever is the higher. If you'd like advice on whether you'd be classified as an international student in relation to your tuition fees, contact our Undergraduate Admissions Office.

E admit@essex.ac.uk

The UK Council for International Student Affairs (UKCISA) can also give you advice and information on fee statuses. Visit their website for more information.

ukcisa.org.uk

If you require a Tier 4 visa to study in the UK, as part of the visa application process, you may be asked to produce evidence of your ability to pay tuition fees and to cover living expenses during the course. There's more information on our website about the current UK Home Office requirements.

essex.ac.uk/immigration

Scholarships and bursaries

We offer financial packages to support students, including those from lower income households. Additional support for UK students includes bursaries for care leavers and students with refugee status.

Use our online scholarship finder to search for funding opportunities.

essex.ac.uk/ug/scholarship

Previous study

If you have previously studied at a higher education institution, this may affect the amount of financial support available to you. To find out more about this, or if you've got any other questions, contact our Student Funding Team.

E funding@essex.ac.uk

Living expenses

At January 2018 prices, the minimum sums required for living expenses (for a single student) in 2018-19 are estimated to be between £7,745 and £13,418 for a 39 week course. This includes the cost of a single room in University-provided accommodation, as well as an allowance to cover food and other necessary expenses. For more information check our cost of living webpage.

essex.ac.uk/living-costs

At Essex, there are lots of opportunities to work part-time while you study if you need a bit of extra cash – see page 32 for more information on jobs offered within the University.

Accounting, Finance and Banking	72	Journalism	122
Acting, Producing and Stage Management	74	Latin American Studies	124
Actuarial Science	76	Law	126
American Studies	78	Liberal Arts	128
Art History	80	Literature	130
Biochemistry	82	Marine Biology	132
Biological Sciences	84	Marketing	134
Biomedical Science	86	Mathematics	136
Business and Management	88	Modern Languages	138
Childhood Studies	90	Nursing: Adult or Mental Health	140
Computer Science	92	Occupational Therapy	142
Creative Writing	94	Oral Health Science	144
Criminology	96	Philosophy	146
Data Science	98	Physiotherapy	148
Drama	100	Politics and International Relations	150
Economics	102	Psychoanalytic Studies/Therapeutic Care	152
Electronic Engineering	104	Psychology	154
English Language and Linguistics	106	Social Work	156
European Studies	108	Sociology	158
Film Studies	110	Speech and Language Therapy	160
Genetics	112	Sport, Exercise, Performance and Coaching	162
Global Studies	114	Sports Therapy	164
History	116	Tourism	166
Hotel Management and Events Management with Hospitality	118	Essex Pathways	168
Human Rights	120		

OUR COURSES



HEY YOU READ THIS

It's very important.

Please check the following details before making a decision on your course.



If you need information on additional GCSE and English Language requirements, see page 64.



If your course requires a B/5 or C/4 in GCSE Mathematics there's no need to take further Maths study as part of the International Baccalaureate if you have already achieved the required grade in your GCSE.



We accept International Baccalaureate Middle Years Maths or Science where these are listed as GCSE requirements. We require 4 for GCSE grade C/4 and 5 for GCSE grade B/5.



Many courses are available with a Year 0 pathway. UK and EU students see page 168, international students see University of Essex International College on page 177.



First-language speakers of a modern language will not be able to study that language as part of a Modern Language degree.



To study Portuguese as a major language, applicants must have either an A-level (or equivalent) in Italian, Spanish or Portuguese, or have first-language fluency in Italian, Romanian or Spanish.



Any course which offers Mandarin as a component is not available to first-language speakers of Mandarin.

ACCOUNTING, FINANCE AND BANKING

WHY ESSEX?

- 1** Our accounting and finance courses have 90% student satisfaction (NSS 2017)
- 2** Over 80% of Essex Business School students were in graduate level work or study within six months of graduating (DLHE 2016)
- 3** Our professionally accredited courses may exempt you from a number of further professional exams, including ACCA, ICAEW and CIMA - go online for more details



As a member of Essex Business School, you will develop your ability to solve complex financial problems. Our courses will ready you for corporate life, ensuring you can make the responsible and profitable decisions that make business boom.



“I chose Essex Business School due to the excellent facilities and staff who have connections with employers... My placement year was at BMW Financial Services.”

Nishan Balasingham, BSc Banking and Finance

COURSE	UCAS CODES			ENTRY REQUIREMENTS
	3 years	+ year abroad	+ placement year	
BSc Accounting	N400	N402	N404	A-levels: BBB GCSE: Mathematics C/4 IB: 30 points, including Standard Level Mathematics or Maths Studies grade 4, if not taken at Higher Level BTEC: DDD, depending on subject and units studied – advice on acceptability can be provided
BSc Accounting and Finance*	N420	NNK3	N422	
BSc Accounting and Management	NN24	NNK2	NN27	
BSc Accounting with Economics	NL41	NKL1	NL44	
BSc Banking and Finance*	N390	NH90	N392	
BSc Finance*	N300	N302	N304	
BSc Finance and Management*	N344	N345	N346	
BSc Finance with Mandarin*		N3T1		

*Awarded with Applied Quantitative Methods qualifier which means you can take a specific degree path to graduate with enhanced quantitative skills.
Some courses are available with a Year 0 start. See page 168 on Essex Pathways for details.

For more from our graduates and all the information you need on courses, modules and graduate destinations go to

essex.ac.uk/ug/accounting

ACTING, PRODUCING AND STAGE MANAGEMENT

WHY ESSEX?

- 1** East 15 is a member of the Federation of Drama Schools
- 2** We give you access to a substantial network of respected industry practitioners
- 3** We are ranked 3rd in the UK for drama (Guardian University Guide 2018) and number one in the UK for Diversity (*The Stage*)



Personal discovery. Intuition. Technical skill. These are the key elements of an actor's craft and our guiding principles. We will provide you with the skills and confidence you need to build a successful career in the performing arts, whether you work onstage or behind the scenes.



"I am incredibly proud to be an East 15 graduate. We are known for our boldness, our fierce determination and commitment to our work."

Daniel Ezra, BA Acting

COURSE	UCAS CODES		ENTRY REQUIREMENTS
	3 years	1 year	
LOUGHTON CAMPUS			
BA Acting	W411		Successful audition, plus A-levels: CDD, or the equivalent in UCAS tariff points, to include 2 full A-levels BTEC: MMP
BA Acting (International)	W83A		
BA Acting and Contemporary Theatre	W441		
BA Stage and Production Management	DKAS		Successful interview and technical aptitude workshop, plus A-levels: CDD, or the equivalent in UCAS tariff points, to include 2 full A-levels BTEC: MMP
Cert HE Theatre Arts		W410	Successful audition, plus A-level: E or equivalent qualification
International Foundation in Acting*		W415	International Foundation in Acting is open to EU and international applicants only
SOUTHEND CAMPUS			
BA Acting and Community Theatre	W496		Successful audition, plus A-levels: CDD, or the equivalent in UCAS tariff points, to include 2 full A-levels BTEC: MMP
BA Acting and Stage Combat	W412		Successful physical workshop audition, plus A-levels: CDD, or the equivalent in UCAS tariff points, to include 2 full A-levels BTEC: MMP
BA Physical Theatre	W494		
BA World Performance	W495		Successful audition (W495) or interview (W900), plus A-levels: BBC, or the equivalent in UCAS tariff points, to include 2 full A-levels
BA Creative Producing (Theatre and Short Film)*	W900		BTEC: DDM IB: 29 points
Cert HE Theatre Arts		W410	Successful audition, plus A-level: E or equivalent qualification

*subject to approval.

If you are unable to physically attend an audition we are sometimes able to accept video auditions. For more details visit our website.

For more from our graduates and all the information you need on courses, modules and graduate destinations go to

essex.ac.uk/ug/act-prod-stage

ACTUARIAL SCIENCE

WHY ESSEX?

- 1** BSc Actuarial Science exempts you from key Institute and Faculty of Actuaries exams
- 2** You have access to our ultramodern facilities at our new STEM building that provide real-world experience
- 3** An exceptional learning environment: world-class lecturers, academics and professional actuaries are your instructors



Actuarial science refers to the application of mathematical and statistical skills to solve problems within areas such as insurance, finance, commerce and government. Our BSc Actuarial Science covers the full range of core skills essential for the profession and can offer exemption from the main Institute and Faculty of Actuaries (IFoA) examinations. This means you can qualify as an actuary faster upon graduation, while our relationship with Innovate UK provides our students with top placements and project opportunities. We also offer two courses enabling you to combine essential skills in mathematics with either finance or economics.

“Networking events gave me industry contacts – I will be work shadowing at AXA and Aviva.”

Liliane Kamalendran, BSc Actuarial Science

COURSE	UCAS CODES			ENTRY REQUIREMENTS
	3 years	+ year abroad	+ placement year	
BSc Actuarial Science	N323	N324	N233	A-levels: BBB, including Mathematics Please note that we are unable to accept A-level Use of Mathematics in place of A-level Mathematics
BSc Economics and Mathematics	LG11	LG1C	L1G2	
BSc Finance and Mathematics	GN13	GN1H	GN15	IB: 30 points, including Higher Level Mathematics or Maths Studies grade 6

Some courses are available with a Year 0 start. See page 168 on Essex Pathways for details.

For more from our graduates and all the information you need on courses, modules and graduate destinations go to

essex.ac.uk/ug/actuarial

AMERICAN STUDIES

WHY ESSEX?

- 1** We're 6th in the UK according to the Times Good University Guide 2018 and 4th according to the Guardian University Guide 2018
- 2** You can study abroad at a wide range of excellent partner universities across the US
- 3** Benefit from our flexible course structure to tailor-make your degree



Founded on the principles of 'life, liberty and the pursuit of happiness', the United States is a collision of romantic ideals – and problematic realities. American Studies connects topics from literature, film and art, to politics, history and linguistics, developing your knowledge of a nation with unparalleled cultural influence. Studying here and in the US, you will gain a range of skills for the future, as well as a rich understanding of this incredible country.



"I especially enjoyed the module on Black America and the film modules I studied at both Essex and the University of California. They have been fundamental to my chosen career because they demonstrate my interest in film, production and the media industry."

Josephine Owusu, BA American Studies

COURSE	UCAS CODES		ENTRY REQUIREMENTS
	3 years including term abroad	+ year abroad	
BA American Studies (United States)	T700	T708	A-levels: BBB, including an essay-based subject
BA American Studies (United States) with Film	T7P3	T7W6	IB: 30 points, including a Higher Level essay-based subject grade 5
BA Criminology and American Studies (United States)	MT2R	MT27	BTEC: DDM, depending on subject and units studied – advice on acceptability can be provided

Some courses are available with a Year 0 start. See page 168 on Essex Pathways for details.

For more from our graduates and all the information you need on courses, modules and graduate destinations go to

essex.ac.uk/ug/american

ART HISTORY

WHY ESSEX?

- 1** We are one of the few top-ranked art history schools in the UK to offer a BA in Curatorial Studies
- 2** We're among the top 10 universities in the UK (Times Good University Guide 2018)
- 3** We house the most comprehensive collection of Latin American art in Europe, ESCALA



Our world is now dominated and driven by visual media; understanding it has never been more challenging. You will gain a foundation in art and architecture from the Renaissance to the present day, and also learn about examples of visual culture that are often overlooked. Our academics curate high-profile exhibitions including Dr Gavin Grindon's *The Museum of Cruel Designs* at Banksy's Dismaland and *Disobedient Objects* at the V&A.

“During my course I was given the opportunity to work on an innovative project on Object-Based Learning, for which we developed five different workshops. I also helped to organise the art competition ‘I AM ESSEX’, curating a large-scale exhibition of selected entries.”

Gisselle Giron Casas, BA Art History

COURSE	UCAS CODES		ENTRY REQUIREMENTS
	3 years	+ year abroad	
BA Art History	V314	V35A	A-levels: BBB IB: 30 points BTEC: DDM, depending on subject and units studied – advice on acceptability can be provided
BA Art History and History	VV31	VV3C	
BA Curatorial Studies	V351	V352	
BA Film Studies and Art History	VW36	PV33	
BA Literature and Art History	QV23	QV32	
BA Art History and Modern Languages		VR39	
BA Art History with Modern Languages		V3R9	
BA Philosophy and Art History	VV53	VV5H	

All Art History courses can be combined with a placement year. You would be responsible for finding your placement, with the support and guidance of the Employability and Careers Centre, in consultation with the School of Philosophy and Art History. Some courses are available with a Year 0 start. See page 168 on Essex Pathways for details.

For more from our graduates and all the information you need on courses, modules and graduate destinations go to

essex.ac.uk/ug/art-hist

BIOCHEMISTRY



WHY ESSEX?

- 1** Undertake practical work in our new cutting-edge research labs
- 2** Our teaching is underpinned by research – new ideas and theories are tested in the classroom
- 3** We insist on small-group tutorial teaching to complement your formal lectures



Every component of life is beautifully connected and studying biochemistry allows you to appreciate the processes of life at a molecular level. At Essex you are taught by an international team of world-leading experts at the forefront of their fields. In your final year you contribute to ongoing projects in our state-of-the-art research labs. Choose Biochemistry and learn to think and behave like a scientist.

“The modules I enjoyed most were Cancer Biology and Microbiology, which allowed us to admire nature’s work at its finest – fascinating and also a little scary!”

Abigail Baty, BSc Biochemistry

COURSE	UCAS CODES			ENTRY REQUIREMENTS
	3 years	+ year abroad	+ placement year	
BSc Biochemistry	C700	C703	C701	<p>A-levels: BCC, including Chemistry and a second science or Mathematics</p> <p>Pass required in science practical element of A-level Biology, Chemistry or Physics</p> <p>GCSE: Mathematics C/4</p> <p>IB: 28 points, including Higher Level Chemistry and a second science or Mathematics grade 5, plus Standard Level Mathematics grade 4, if not taken at Higher Level. Maths Studies is also acceptable.</p> <p>BTEC: DDD, depending on subject and units studied – advice on acceptability can be provided</p>

For more from our graduates and all the information you need on the course, modules and graduate destinations go to

essex.ac.uk/ug/biochem

BIOLOGICAL SCIENCES

WHY ESSEX?

- 1** Research the broad diversity of life, from molecules to field-based ecology, and tailor your degree to your specific interests
- 2** Conduct your final year research project within one of our purpose-built research laboratories
- 3** We emphasise employability and have strong links with industry, government and non-governmental organisations (NGOs)



Biology is the scientific exploration of the vast and diverse world of living organisms. It has expanded enormously within recent years, revealing a wealth of knowledge about ourselves and the millions of organisms on our planet. Learn modern lab techniques, participate in research field trips, develop employability skills and explore the most recent developments in the field. There has never been a more exciting time to be a biologist.

“Picking Biological Sciences meant that I could get a taste for all the different types of biology...I am now working in the microbiology department at my local hospital, hoping to become a Trainee Biomedical Scientist in the near future.”

Sam Williams, BSc Biological Sciences

COURSE	UCAS CODES			ENTRY REQUIREMENTS
	3 years	+ year abroad	+ placement year	
BSc Biological Sciences	C100	C101	C102	A-levels: BCC, including Biology at grade B Pass required in science practical element of A-level Biology, Chemistry or Physics GCSE: Mathematics C/4 IB: 28 points, including Higher Level Biology grade 5 and Standard Level Mathematics or Maths Studies grade 4, if not taken at Higher Level BTEC: DDD, depending on subject and units studied – advice on acceptability can be provided

For more from our graduates and all the information you need on the course, modules and graduate destinations go to

essex.ac.uk/ug/bio-sci

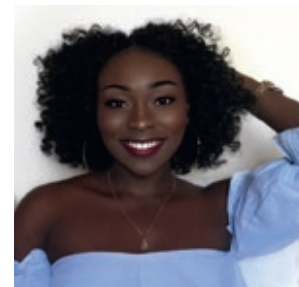
BIOMEDICAL SCIENCE

WHY ESSEX?

- 1** You have the opportunity to spend a year working in an NHS lab
- 2** Our course is accredited by the Institute of Biomedical Science
- 3** Local NHS practitioners contribute to teaching, giving you real-world insight and experience



Exploration of how the body works is endlessly fascinating. Biomedical science applies the concepts of biochemistry and cell biology to the study of disease. You learn about the onset, progression, diagnosis and treatment of diseases and are taught by research-active academic experts. You undertake practical work in our state-of-the-art labs, enabling you to gain the skills needed for further study or a career within the profession.



“I am now studying medicine and I feel that my degree in biomedical science proved to be the perfect preparation.”

Bernadette Agboola, BSc Biomedical Science

COURSE	UCAS CODES			ENTRY REQUIREMENTS
	3 years	+ year abroad	+ placement year	
BSc Biomedical Science	B990	B995	B999	<p>A-levels: BCC, including Chemistry or Biology and a second science or Mathematics</p> <p>Pass required in science practical element of A-level Biology, Chemistry or Physics</p> <p>GCSE: Mathematics C/4</p> <p>IB: 28 points, including Higher Level Chemistry or Biology and a second science or Mathematics grade 5, plus Standard Level Mathematics grade 4, if not taken at Higher Level. Maths Studies is also acceptable.</p> <p>BTEC: DDD, depending on subject and units studied – advice on acceptability can be provided</p>

For more from our graduates and all the information you need on the course, modules and graduate destinations go to

essex.ac.uk/ug/biomed-sci

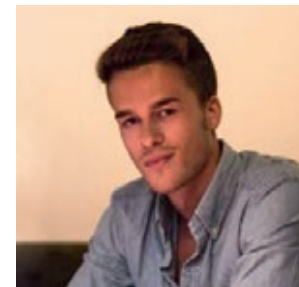
BUSINESS AND MANAGEMENT

WHY ESSEX?

- 1** Learn from internationally respected academics and practitioners within a welcoming learning environment
- 2** A placement or study abroad year is available with the majority of our courses
- 3** Over 80% of Essex Business School students were in graduate level work or study within six months of graduating (DLHE 2016)



At Essex Business School our courses develop your understanding of the essentials of management and modern business, with a strong emphasis on ethics. We don't just prepare you for a successful career; we'll help you to harness the power of business to shape a better world. Whether you want a corporate career or to build your own business empire, we encourage you to be creative and analytical, to be bold and question assumptions.



"If you work for a start-up, it's vital to manage your time effectively. You also have to be willing to put in the hours. Essex Business School taught me how to do both of these things!"

Thomas Sveum, Essex Business School Alumnus and CEO of startupmatcher.com

COURSE	UCAS CODES			ENTRY REQUIREMENTS
	3 years	+ year abroad	+ placement year	
COLCHESTER CAMPUS				
BSc Business Management	N200	N202	N204	A-levels: BBB GCSE: Mathematics C/4 IB: 30 points, including Standard Level Mathematics or Maths Studies grade 4, if not taken at Higher Level BTEC: DDD, depending on subject and units studied – advice on acceptability can be provided
BSc Management and Marketing	NN25	NNF5	NN2M	
BA Business Management and Modern Languages		NR19		
BA Business Management with a Modern Language		N1R9		
BSc Management with Mandarin		N1T1		
BA Journalism with Business Management*	P520	P522	P521	
SOUTHEND CAMPUS				
BA Business Administration	N100	N110	N103	
BSc International Business and Entrepreneurship	N120	N121	N123	

*one A-level must be an essay-based subject.
Some courses are available with a Year 0 start. See page 168 on Essex Pathways for details.

For more from our graduates and all the information you need on courses, modules and graduate destinations go to

essex.ac.uk/ug/business

CHILDHOOD STUDIES

WHY ESSEX?

- 1** Our staff bring clinical expertise to their teaching, including direct experience of working with children in residential care and mental health settings
- 2** We received student satisfaction scores of 94% in NSS 2017
- 3** 80% of our graduates find graduate-level study or employment within six months (DHLE 2016)



Children today face many challenges, from coping with unprecedented access to online media, to negotiating a more culturally diverse society. Many thrive whatever their circumstances; others find life more difficult to manage. As a graduate of Childhood Studies you can make a difference to children's early experiences.

Discover what shapes children's behaviour and their sense of identity. During your degree you will build psychological, sociological and psychoanalytic skills, laying the foundation for a career working with children.

"This course offers a solid academic understanding of childhood from a range of perspectives. You gain a placement experience in each year, knowledge of contemporary issues like ADHD, ASD and trauma, and you benefit from our distinct psychosocial and psychodynamic approach."

Dr Chris Nicholson, Department of Psychosocial and Psychoanalytic Studies

COURSE	UCAS CODES			ENTRY REQUIREMENTS
	3 years	+ year abroad	+ placement year	
BA Childhood Studies	L520	L521	L522	A-levels: BBB IB: 30 points BTEC: DDM, depending on subject and units studied – advice on acceptability can be provided Access to HE Diploma: 45 level 3 credits at merit or above (in relevant pathway) Other qualifications (including vocational qualifications) may also be accepted. Please contact us for more information. E admit@essex.ac.uk

Some courses are available with a Year 0 start. See page 168 on Essex Pathways for details.

For all the information you need on the course, modules and graduate destinations go to

essex.ac.uk/ug/childhood

COMPUTER SCIENCE

WHY ESSEX?

- 1** We are home to many of the world's top scientists and engineers in the field of computer science
- 2** We specialise in areas as diverse as assistive technologies, computer games, artificial intelligence, evolutionary computation, Big Data and robotics
- 3** We offer exceptional purpose-built facilities including state-of-the-art labs



Our lives would be unrecognisable without computing. Information systems make businesses run; computer games make life fun. Simulation enables us to understand how things, people and countries behave. Social media, face recognition, website design, cloud computing, network security, robotics – our future looks fascinating – and how it works is down to you.



“I applied for an internship with Coderus in my second year. After graduating I was offered a permanent role, and I’ve never looked back.”

James Warner, BSc Computer Games

COURSE	UCAS CODES			ENTRY REQUIREMENTS
	3 years	+ year abroad	+ placement year	
BSc Computer Science	G400	G401	I101	A-levels: BBB
BSc Computer Games	G610	G612	I610	GCSE: Mathematics C/4
BEng Computer Networks	G420	G421	I120	IB: 30 points, including Standard Level Mathematics or Maths Studies grade 4, if not taken at Higher Level
BEng Computer Systems Engineering	H650	H651	HP50	BTEC: DDM, depending on subject and units studied – advice on acceptability can be provided
BEng Computers with Electronics	GH4P	GH4Q	I1H6	A-levels: ABB
MSci Computer Science (Integrated Masters)	G402 (4 years)		I100	GCSE: Mathematics C/4 IB: 32 points, including Standard Level Mathematics or Maths Studies grade 4, if not taken at Higher Level BTEC: DDD, depending on subject and units studied – advice on acceptability can be provided

Some courses are available with a Year 0 start. See page 168 on Essex Pathways for details.

For more from our graduates and all the information you need on courses, modules and graduate destinations go to

essex.ac.uk/ug/comp-sci

CREATIVE WRITING

WHY ESSEX?

- 1** We have been the home of great writers, including Robert Lowell, Michèle Roberts, Nobel Laureate Derek Walcott and Booker Prize winner Ben Okri
- 2** You will be taught by practising writers and have the opportunity to see your work published in our anthology *Creel*
- 3** We encourage innovation, experimentation and originality in writing and thinking

Are writers born or made? Your imagination is the starting point. But to write is to read widely, listen well and work hard. At Essex we nurture our creative writers with an inspirational reading list. We teach you the skills you need to effectively express your ideas. And we help you find and define your voice, whether that's through poetry, prose, drama – or something else entirely.

We don't believe good writers are simply born. They're made at Essex.

“My debut novel, *The Beauty That Flows Past*, won a literary prize in Norway...The BA Creative Writing was an important stepping stone towards becoming a published writer.”

Ida Løkås, BA Creative Writing

COURSE	UCAS CODES		ENTRY REQUIREMENTS
	3 years	+ year abroad	
BA Creative Writing	W800	W801	A-levels: BBB, including one essay-based subject IB: 30 points, including a Higher Level essay-based subject grade 5
BA Literature and Creative Writing	QW30	QW31	BTEC: DDM, depending on subject and units studied – advice on acceptability can be provided

Some courses are available with a Year 0 start. See page 168 on Essex Pathways for details.

For more from our graduates and all the information you need on courses, modules and graduate destinations go to

essex.ac.uk/ug/creative



CRIMINOLOGY

WHY ESSEX?

- 1** 7th for criminology in the UK according to the Times Good University Guide 2018
- 2** You are taught by staff who conduct world-leading research
- 3** Develop the critical and inventive-thinking skills essential for many graduate jobs



If you're interested in building a better, fairer society, criminology may be the course for you. You will engage with some of the most pressing dilemmas facing society today around crime, justice, social control, punishment, rights and citizenship. So be warned – adopting a criminological imagination will make you see your world in a completely new way.



“Essex really encouraged voluntary work, so I started at a domestic abuse charity and a rape helpline...Now I am training to become a Police Constable.”

Gabrielle Johnson, BA Criminology

COURSE	UCAS CODES			ENTRY REQUIREMENTS
	3 years	+ year abroad	+ placement year	
BA Criminology	M900	M901	M904	
BA Criminology with Criminal Law*	LM11	LM12	LM13	A-levels: BBB
BA Criminology with Social Psychology	L3C8	LHC8	L3H8	IB: 30 points
BA Criminology with Counselling Skills*	L333	L334	L335	BTEC: DDD, depending on subject and units studied – advice on acceptability can be provided
BA Sociology and Criminology	LM39	LMH9	LM38	
BA Criminology and American (United States) Studies*	MT2R	MT27		A-levels: BBB, including one essay-based subject
				IB: 30 points, including a Higher Level essay-based subject grade 5
BA Journalism and Criminology	P550	P552	P551	BTEC: DDD, depending on subject and units studied – advice on acceptability can be provided

*subject to approval.

*includes a term abroad.

Some courses are available with a Year 0 start. See page 168 on Essex Pathways for details.

For more from our graduates and all the information you need on courses, modules and graduate destinations go to

essex.ac.uk/ug/criminology

DATA SCIENCE



WHY ESSEX?

- 1** We're focused on employability – data scientists are required in every sector, so our courses can open the door to almost any industry
- 2** Possess truly interdisciplinary knowledge and graduate with skills in the areas of Big Data, data science and statistics
- 3** You will put solid theory in to practice and be encouraged to solve 21st century problems and challenges

Data is the new lifeblood of our society. From medicine to government offices, and market research to the environment, the collection and analysis of data is crucial to understanding how to improve, create and guide products and services. Data science is about doing detective work; your investigations will inform important decisions and predict new trends.

“Data science is the perfect subject for people who enjoy both computing and maths. I chose Essex because it was one of the few universities who offered it as a degree... Essex partners with a lot of businesses, and gives students opportunities to gain highly useful work experience.”



Andreas Loucas, BSc Data Science and Analytics

COURSE	UCAS CODES			ENTRY REQUIREMENTS
	3 years	+ year abroad	+ placement year	
BSc Data Science and Analytics	I1G3	I1GC	I1GB	A-levels: BBB, including Mathematics Please note that we are unable to accept A-level Use of Mathematics in place of A-level Mathematics
BSc Mathematics and Statistics	9K12	5B43	9K13	
BSc Mathematics and Computing	G1GK	G1G4	G1IK	IB: 30 points, including Higher Level Mathematics or Maths Studies grade 5

Some courses are available with a Year 0 start. See page 168 on Essex Pathways for details.

For more from our students and all the information you need on courses, modules and graduate destinations go to

essex.ac.uk/ug/data-sci

DRAMA

WHY ESSEX?

- 1** We are ranked 3rd in the UK according to the Times Good University Guide 2018
- 2** We have a thriving Theatre Arts Society and student company – you can put theory into practice
- 3** Our lecturers are respected, working theatre professionals and our Lakeside Theatre is a performance venue with an international reputation



Studying drama at Essex is a transformative experience that will equip you for the future you want. Through a combination of workshops and seminars, you receive a thorough grounding in classical and contemporary texts, as well as practices that are key to theatre and performance. Our varied modules include: devising; playwriting; tragedy; and theatre in education. We are committed to furthering the cause of human rights through drama – in our teaching, research and practice. We think theatre can change the world.

“I am currently an Assistant Director at Explore Learning. I am able to apply my knowledge of Shakespeare when working with children at the centre and I am confident going into schools and holding workshops as I did this in my theatre in education module.”

Victoria Wright, BA Drama

COURSE	UCAS CODES		ENTRY REQUIREMENTS
	3 years	+ year abroad	
BA Drama	W401	W402	A-levels: BBB, including one essay-based subject IB: 30 points, including a Higher Level essay-based subject grade 5
BA Drama and Literature	QW24	WQ42	BTEC: DDM, depending on subject and units studied – advice on acceptability can be provided

All Drama courses can be combined with a placement year. You would be responsible for finding your placement, with the support and guidance of the Employability and Careers Centre, in consultation with the Department of Literature, Film and Theatre Studies. Some courses are available with a Year 0 start. See page 168 on Essex Pathways for details.

For more from our graduates and all the information you need on courses, modules and graduate destinations go to

essex.ac.uk/ug/drama

ECONOMICS

WHY ESSEX?

- 1** We are top 10 for value added to economics graduate wages (The Economist 2017)
- 2** We give you diverse employment potential and the chance to meet future employers
- 3** We received student satisfaction scores of 92% in NSS 2017



Financial crisis. Unemployment. Immigration. Economics at Essex focuses on the material wellbeing of human societies and challenges the standard paradigms of economics. By asking difficult questions we break intellectual boundaries, pioneering solutions to issues of global concern.

“The Department boasts a host of renowned professionals who truly are experts in their field, and as a result their passion is consistently reflected when they deliver their classes and lectures.”

Amrit Jhita, BA Economics

COURSE	UCAS CODES			ENTRY REQUIREMENTS
	3 years	+ year abroad	+ placement year	
BA Business Economics*	LN10	LN11	LN12	A-levels: BBB GCSE: Mathematics B/5 IB: 30 points, including Standard Level Mathematics or Maths Studies grade 5, if not taken at Higher Level BTEC: DDD, depending on subject and units studied – advice on acceptability can be provided
BA Economics	L100	L106	0F66	
BSc Economics	L101	L107	0E45	
BA Financial Economics	L111	L195	5A84	
BSc Financial Economics	L114	L194	0Q64	See L100 above, plus B in A-level Mathematics (or equivalent)
BA International Economics	L115	L163	9O47	
BSc International Economics	L116	L162	5H18	
BA Management Economics	L108	L192	9L11	
BSc Management Economics	L109	L193	5M00	See L100 above, but C/4 in GCSE Mathematics (or equivalent)
BSc Economics with Mathematics	L1G1	L1GC	L1G3	
BA Financial Economics and Accounting	L148	L149	L147	
BA History and Economics	LV11	VL11	V1L1	
BA Economics with a Modern Language	L1V0	L1R0		See L100 above
BSc Economics with Computing*	LG01	LG02	LG03	
BA Journalism and Economics	P560	P562	P561	See journalism subject page

*subject to approval.

Some courses are available with a Year 0 start. See page 168 on Essex Pathways for details.

For more from our graduates and all the information you need on courses, modules and graduate destinations go to

essex.ac.uk/ug/economics

ELECTRONIC ENGINEERING



WHY ESSEX?

- 1** You gain professional IET and BCS accreditation – the basis for chartered engineer status
- 2** We are home to many of the world's top scientists and engineers in fields such as electronics, communications and robotics
- 3** We offer exceptional purpose-built facilities, equipped with the latest hardware and software tools



Electronics is essential to our modern world of instant global communication. The internet, innovative telecommunications and powerful, inexpensive computing have all been realised through advances in electronics. Our students are the people who develop the technology we use in our daily lives. Join our community of scholars who are leading the way in technological research and development.



“My designs are now being used around the world in large companies such as Ford and IBM.”

Matthew Evans, BEng Electronic Engineering

COURSE	UCAS CODES			ENTRY REQUIREMENTS
	3 years	+ year abroad	+ placement year	
BEng Electronic Engineering	H610	H611	HP10	A-levels: BBB, including Mathematics GCSE: Science C/4
BEng Communications Engineering	H641	HQ41	HPK1	IB: 30 points, including Higher Level Mathematics or Maths Studies grade 5 and Standard Level Science grade 4
BEng Robotic Engineering	H615	H616	H617	BTEC: DDM, depending on subject and units studied – advice on acceptability can be provided
MEng Electronic Engineering (Integrated Masters)	H613 (4 years)		H614	A-levels: ABB, including Mathematics GCSE: Science C/4 IB: 32 points, including Higher Level Mathematics or Maths Studies grade 5 and Standard Level Science grade 4
MEng Communications Engineering (Integrated Masters)	H642 (4 years)			BTEC: DDD, depending on subject and units studied – advice on acceptability can be provided

Some courses are available with a Year 0 start. See page 168 on Essex Pathways for details.

For more from our graduates and all the information you need on courses, modules and graduate destinations go to

essex.ac.uk/ug/elec-engineering

ENGLISH LANGUAGE AND LINGUISTICS

For Modern Languages see page 138.

WHY ESSEX?

- 1** You are taught by lecturers who are internationally recognised for their linguistics research
- 2** Join our diverse community of students from all corners of the globe – we are the world in one place
- 3** We give you the option to work abroad, or study overseas at a partner university of your choice



Everything starts with language. At Essex we want to decipher this uniquely human phenomenon. We explore language from all angles such as; how language is acquired and developed in childhood, how different dialects develop and are perceived in society and how language is used in contexts like the media, courtrooms and classrooms. Our students gain a range of skills valued by a broad range of employers, from how we use language to convey personal identity, to the skills you need in Teaching English as a Foreign Language (TEFL).



“The Language and Linguistics staff are incredibly knowledgeable. I now work for an international publishing company and feel my course gave me the confidence to succeed.”

Kirsten Alexander, BA English Language and Linguistics

COURSE	UCAS CODES			ENTRY REQUIREMENTS
	3 years	+ year abroad	+ placement year	
BA Linguistics	Q100	Q101	Q103	A-levels: BBB IB: 30 points BTEC: DDD, depending on subject and units studied – advice on acceptability can be provided
BA English Language and Linguistics	QQ13	QQ3D	QQ15	
BA English Language and Literature	QQ23	QQ32	QQ35	
BA English Language with Media Communication*	QP10	QP11	QP12	
BA Teaching English as a Foreign Language (TEFL)	QX31	QXH1	QX51	
BA Modern Languages and English Language		RQ93		

*subject to approval.
Some courses are available with a Year 0 start. See page 168 on Essex Pathways for details.

For more from our graduates and all the information you need on courses, modules and graduate destinations go to

essex.ac.uk/ug/english-lang

EUROPEAN STUDIES



WHY ESSEX?

- 1** You are taught by a team of international experts in a range of subjects
- 2** Each of our courses enables you to study abroad at an excellent European university of your choice
- 3** You have the opportunity to study one or more European languages as part of your degree

We take an innovative, interdisciplinary approach, combining subjects from across the humanities and social sciences. Our aim is to investigate and debate issues that are of vital importance to the future of the UK and the world. New and creative thinking regarding the future of Europe is needed as never before. Our graduates will make the most of a continent that has a rich cultural heritage and constitutes the world's largest free trade area. There has never been a more important time to study Europe.

"I chose my course because of my passion for foreign cultures, languages and European society. In my final year I studied a module in Translation, Interpreting and Subtitling, which I found very practical and interesting. It motivated me to pursue an MA at Essex."

Beatrice Manole, BA European Studies and Modern Languages

COURSE	UCAS CODES	ENTRY REQUIREMENTS
	4 years including year abroad	
BA European Studies (including Year Abroad)	R000	
BA European Studies with French	R9R1	A-levels: BBB IB: 30 points BTEC: DDM, depending on subject and units studied – advice on acceptability can be provided
BA European Studies with German	R9R2	
BA European Studies with Italian	R9R3	
BA European Studies with Spanish	R9R4	
BA European Studies with Politics	R9L2	
BA European Studies and Modern Languages	R9T9	

Some courses are available with a Year 0 start. See page 168 on Essex Pathways for details.

For more from our graduates and all the information you need on courses, modules and graduate destinations go to

essex.ac.uk/ug/euro-studies

FILM STUDIES

WHY ESSEX?

- 1** HD cameras, extensive editing facilities, a film library and a dedicated cinema are some of the tools you'll use every day
- 2** We offer opportunities for paid work experience in productions, events and festivals
- 3** Our close links with film, TV and publishing industries give you excellent career prospects



If you have a natural curiosity for the world, our courses are ideal. We offer a dynamic programme of hands-on production experience matched with scholarly insights into cinema cultures, histories and theories. Our emphasis is on developing technical expertise along with a profound knowledge of diverse world cinemas. We offer an opportunity to look at cinema differently, exploring the medium in depth while enhancing critical and industry-specific skills.

“The structure of the Film Studies course was a big part of my decision to study at Essex, as I really liked the way it combined theory and practice...My time at Essex helped me find myself and gave me new-found confidence.”

Sarah Arthur, BA Film Studies

COURSE	UCAS CODES		ENTRY REQUIREMENTS
	3 years	+ year abroad	
BA Film Studies	W620	P303	A-levels: BBB, including one essay-based subject
BA Film Studies and Literature	QW26	PQ32	IB: 30 points, including a Higher Level essay-based subject grade 5
BA Film and Creative Writing	PW38	PWH8	BTEC: DDM, depending on subject and units studied – advice on acceptability can be provided
BA American Studies (United States) with Film	T7P3	T7W6	

All Film Studies courses can be combined with a placement year. You would be responsible for finding your placement, with the support and guidance of the Employability and Careers Centre, in consultation with the Department of Literature, Film and Theatre Studies. Some courses are available with a Year 0 start. See page 168 on Essex Pathways for details.

For more from our graduates and all the information you need on courses, modules and graduate destinations go to

essex.ac.uk/ug/film

GENETICS



WHY ESSEX?

- 1** Study advanced, medically important topics including cancer biology and immunology
- 2** Develop essential lab skills in gene manipulation, cloning and bioinformatics
- 3** Gain valuable research experience by getting involved in cutting-edge project work



Want to find yourself? The answers are here. From personalised medicine and genome editing to molecular evolution and emerging superbugs, there's never been a more exciting time to study genetics.

"I enjoyed the range of modules throughout the degree, and I was able to focus on the topics which interested me most."

Karl Skeels, BSc Genetics

COURSE	UCAS CODES			ENTRY REQUIREMENTS
	3 years	+ year abroad	+ placement year	
BSc Genetics	C400	C402	C403	A-levels: BCC, including Biology at grade B Pass required in science practical element of A-level Biology, Chemistry or Physics GCSE: Mathematics C/4 IB: 28 points, including Higher Level Biology grade 5 and Standard Level Mathematics grade 4, if not taken at Higher Level. Maths Studies is also acceptable. BTEC: DDD, depending on subject and units studied – advice on acceptability can be provided
BSc Genetics and Genomics	C410	C412	C411	A-levels: BCC, including Biology or Maths at grade B Pass required in science practical element of A-level Biology, Chemistry or Physics GCSE: Mathematics C/4 IB: 28 points, including Higher Level Biology or Maths grade 5 and Standard Level Mathematics grade 4, if not taken at Higher Level. Maths Studies is also acceptable. BTEC: DDD, depending on subject and units studied – advice on acceptability can be provided

For more from our graduates and all the information you need on courses, modules and graduate destinations go to

essex.ac.uk/ug/genetics

GLOBAL STUDIES



WHY ESSEX?

- 1** Learn to think globally about today's world issues whilst tailoring your degree to suit your unique interests or goals
- 2** Global Studies gives you the opportunity to study history, politics, art, finance, modern languages and more
- 3** We have always been the highest-rated politics department in the UK (REF 2014, mainstream universities, Times Higher Education 2014)



We need global thinking for global problems. The challenges facing the world today are profoundly international. From the migrant crisis to global warming, contemporary issues require graduates who bring a global perspective and broad, interdisciplinary skills to the table. If you are ready to take on the challenge of thinking on a global scale, BA Global Studies is for you.

"I am from the USA, but came to Essex ten years ago, in part because of the remarkable global mix of students, staff, scholarship and activism that is central to the environment here.

At Essex we are looking around the world to advance reform here in the UK and elsewhere."

Professor Wayne Martin, Founding Director of BA Global Studies

COURSE	UCAS CODES			ENTRY REQUIREMENTS
	3 years	+ year abroad	+ placement year	
BA Global Studies	L903	L904		A-levels: BBB, including one essay-based subject IB: 30 points, including a Higher Level essay-based subject grade 5
BA Global Studies and Modern Languages	LR03	LR04	LR05	BTEC: DDM, depending on subject and units studied – advice on acceptability can be provided

Some courses are available with a Year 0 start. See page 168 on Essex Pathways for details.

For all the information you need on courses, modules and graduate destinations go to

essex.ac.uk/ug/global

HISTORY

WHY ESSEX?

- 1** We achieved 90% for student satisfaction (NSS 2017)
- 2** Our department offers a friendly and supportive environment with research-led teaching
- 3** Our wide-ranging modules will offer you a perspective on cultures from all over the world, while equipping you with vital research and career skills



History at Essex is provocative. We bring down rulers to see through the eyes of everyday people and give voice to the powerless. We never look away, but force ourselves to examine the extremes of human behaviour. We ask what makes history, what gets left behind – and why. Your degree will feed your curiosity, even while it raises new questions. Ultimately, history is the tool you need to interpret the past and understand the world we live in today.



Jordan Milne, BA History

“I’m a planning producer and news editor at Sky News. The study at Essex was so independent, you had to put that dedication in to get what you wanted, and that’s how I treat my work now.”

COURSE

UCAS CODES

ENTRY REQUIREMENTS

	3 years	+ year abroad	
BA History	V100	V101	A-levels: BBB IB: 30 points BTEC: DDM, depending on subject and units studied – advice on acceptability can be provided
BA Modern History	V140	V149	
BA History with Film Studies	V1W6	V1WP	
BA History with Human Rights	V1L2	V1LF	
BA History and Criminology	MV91	MV9C	
BA History and Literature	QV21	VQ12	
BA History and Sociology	LV31	LV3C	
BA Modern History and International Relations	VL12	VL1F	
BA Modern History and Politics	LV21	LV2C	See economics subject page
BA Philosophy and History	VV15	VV5C	
BA History and Economics	LV11	VL11	

All History courses can be combined with a placement year. You would be responsible for finding your placement, with the support and guidance of the Employability and Careers Centre, in consultation with the Department of History. Some courses are available with a Year 0 start. See page 168 on Essex Pathways for details.

For more from our graduates and all the information you need on courses, modules and graduate destinations go to

essex.ac.uk/ug/history

HOTEL MANAGEMENT AND EVENTS MANAGEMENT WITH HOSPITALITY

WHY ESSEX?

- 1** The Edge Hotel School is the first hotel school of its kind in the UK
- 2** You can complete one of our accelerated degrees in only two years
- 3** Gain invaluable professional experience in our stunning 4 Star hotel, Wivenhoe House



The Edge Hotel School is a partner of the University of Essex and is changing the way people think about hospitality and education. You will gain experience within our hotel located on Essex's Colchester Campus. Your degree will open up a network of industry links, give you training in business management and develop you into an innovative, professional leader for the hospitality industry.



"I put my love of business, customer service and hotels together to study a Hotel Management degree. I am now on the Marriott Voyage Management Graduate Programme at The London EDITION!"

Charlie Johnston, BA Hotel Management

COURSE	UCAS CODES	ENTRY REQUIREMENTS
BA Hotel Management	N863	96 UCAS tariff points, for example: A Levels: CCC
BA Events Management with Hospitality	N8N6	BTEC: MMM GCSE: Five GCSEs at grade C/4 or above, including Mathematics and English, or equivalent
FdA Hotel Management*	N86G	64 UCAS tariff points, for example: A Levels: CC BTEC: MPP
FdA Events Management with Hospitality*	N6N8	Applicants with vocationally relevant level 3 qualifications will be considered on individual merit. GCSE: Five GCSEs at grade C/4 or above, including Mathematics and English, or equivalent
BA Hotel Management (Top Up)	NV62	Level 5 qualification, such as FdA, HND, Advanced Diploma etc, in a relevant field. Your eligibility will be determined during the admissions process.

*subject to satisfactory academic and practical assessment, you will have the opportunity to progress to the final level of the BA (Hons) degree after 16 months.

Please note that the UCAS institution code for the Edge Hotel School is E41. You can also apply directly to the School. The Edge Hotel School accepts a wide range of qualifications – get in touch via our website.

For more from our graduates and all the information you need on courses, modules and graduate destinations go to

edgehotelschool.ac.uk

HUMAN RIGHTS

REFUGEES
WELCOME

WHY ESSEX?

- 1** Our lecturers are renowned experts in human rights and hold prestigious UN appointments
- 2** Gain experience in the field through opportunities such as our Human Rights Clinic
- 3** We have an active Human Rights Society which hosts a comprehensive programme of events

120



Students lead a bare-foot walk to show solidarity with the world's refugees.

Human rights have no borders or boundaries. They are the global language of the world. Studying human rights gives you the confidence to advocate for individual and community rights, social justice and social change. Our approach is interdisciplinary, with the theory and practice of human rights embedded in our work.



"I chose to study at Essex because of its international outlook...my time at University provided me with many opportunities to meet people from the industry. It also improved my time-management, analytical, and critical thinking skills"

Nia Mincheva, LLB Law with Human Rights

COURSE

UCAS CODES

ENTRY REQUIREMENTS

	3 years	+ year abroad	+ placement year	
BA History with Human Rights	V1L2	V1LF		Please see the respective subject pages for the typical entry requirements for these courses or visit the Human Rights subject page online.
BA Latin American Studies with Human Rights		T7M9		
LLB Law with Human Rights	MM20	MM21		
BA Social Anthropology with Human Rights	LL37	LL38	LL39	
BA Philosophy with Human Rights	V5M9	V5MX		
BA Sociology with Human Rights	L3M9	LMJ9	L3J9	
BA Politics with Human Rights	L2M9	LFM9	L219	
BA Journalism with Human Rights	P570	P572	P571	

LLB Law with Human Rights can be combined with a placement year. You would be responsible for finding your placement, with the support and guidance of the Employability and Careers Centre, in consultation with the School of Law. Some courses are available with a Year 0 start. See page 168 on Essex Pathways for details.

For more from our graduates and all the information you need on courses, modules and graduate destinations go to

essex.ac.uk/ug/human

121

JOURNALISM



WHY ESSEX?

- 1** Create and broadcast your own online content, radio and TV programmes
- 2** Build a portfolio of work across media formats to showcase your talent and versatility
- 3** On completing BA Multimedia Journalism you will gain the National Council for the Training of Journalists (NCTJ) Diploma in Journalism, essential for your future career



This groundbreaking course reflects the changes that have transformed journalism in recent years. You learn from respected journalists and industry experts, exploring what it means to work with new technologies in today's multimedia newsrooms. If you're curious and committed to keeping yourself and others informed about the world we live in, this is the course for you.



“We pulled an all-nighter to cover the 2017 election and created programmes for local radio... Working for Essex's student media has given me the confidence to pursue a career in radio.”

Alex Maxam, BA Multimedia Journalism

COURSE	UCAS CODES			ENTRY REQUIREMENTS
	3 years	+ year abroad	+ placement year	
BA Multimedia Journalism	P500	P501		A-levels: BBB, including one essay-based subject. IB: 30 points, including a Higher Level essay-based subject grade 5. BTEC: DDD, depending on subject and units studied – advice on acceptability can be provided
BA Journalism and Literature	P530	P532	P531	A-levels: BBB, including one essay-based subject IB: 30 points, including a Higher Level essay-based subject grade 5 BTEC: DDM, depending on subject and units studied – advice on acceptability can be provided
BA Journalism and English Language	P510	P512	P511	
BA Journalism and Modern Languages		P590		
BA Journalism and Politics	P580	P582	P581	
BA Journalism and Liberal Arts	P525	P527	P526	
BA Journalism and Philosophy	P515	P517	P516	
BA Journalism with Human Rights	P570	P572	P571	
BA Journalism and Criminology	P550	P552	P551	
BA Journalism and Sociology	P540	P542	P541	
BA Journalism with Business Management	P520	P522	P521	
BA Journalism and Economics	P560	P562	P561	See P500 above plus C/4 in GCSE Mathematics (or equivalent)

BA Multimedia Journalism can be combined with a placement year. You would be responsible for finding your placement, with the support and guidance of the Employability and Careers Centre, in consultation with the Department of Literature, Film and Theatre Studies.

For more from our students and all the information you need on courses, modules and graduate destinations go to

essex.ac.uk/ug/journalism

LATIN AMERICAN STUDIES

WHY ESSEX?

- 1** We house the internationally important collection of Latin American art, ESCALA
- 2** Spend a year studying in Latin America, developing your Spanish or Portuguese
- 3** You can build a course to suit your interests in Latin America by choosing from a range of modules



Latin America is at the heart of issues of global importance. As well as producing some of the world's most celebrated literature, art and music, the region's economic, social and environmental impact is internationally significant. At Essex, you deepen your knowledge of Latin America while gaining the skills and experience to make a difference when you graduate.

“In my second year I took an anthropology module which really challenged my perceptions of indigenous cultures and anthropology as a field of study”

Emma Santos Clewley, BA Latin American Studies with Human Rights

COURSE	UCAS CODES	ENTRY REQUIREMENTS
	4 years including year abroad	
BA Latin American Studies	T711	A-levels: BBB IB: 30 points
BA Latin American Studies with Business Management	T7N2	BTEC: DDM, depending on subject and units studied – advice on acceptability can be provided
BA Latin American Studies with Human Rights	T7M9	

Some courses are available with a Year 0 start. See page 168 on Essex Pathways for details.

For more from our graduates and all the information you need on courses, modules and graduate destinations go to

essex.ac.uk/ug/latin-am

WHY ESSEX?

- 1** Our lecturers work with the UN, the UK government and with EU and foreign governments
- 2** You gain work experience advising real clients through opportunities such as the Essex Law Clinic
- 3** 90% of our students are in graduate level work or further study within six months of leaving (DLHE 2016)



Law affects all of our relationships: with other people, with shops, banks and companies, and with governments. We ask whether the rules which govern these interactions actually work - and whether they are fair. From company law and cybercrime, to music and medicine, our law degrees prepare you to put theoretical knowledge into practice.



“Essex offers a great careers service as well as many volunteering and internship opportunities. I am now working at Coram Children’s Legal Centre and am studying for my Masters in International Human Rights Law at Essex.”

Machela Ama Boampong, LLB Law

COURSE	UCAS CODES		ENTRY REQUIREMENTS
	2 years	+ year abroad	
LLB Law (Senior Status)	M103		An Upper Second class undergraduate degree (this is a conversion course for graduates of other disciplines)
	3 years		
LLB Law	M100	M120	A-levels: BBB, including one essay-based subject IB: 30 points, including a Higher Level essay-based subject grade 5 BTEC: DDD, depending on subject and units studied – advice on acceptability can be provided
LLB Law with Business	MN00	MN01	
LLB Law with Human Rights	MM20	MM21	
LLB Law with Philosophy	MV16	MV18	
LLB Law with Politics	ML16	ML14	
	4 years		
LLB English and French Law (Maîtrise)[†]	M122		A-levels: ABB including A in A-level French IB: 32 points, including Higher Level French Grade 6 French Baccalaureat with 14 overall including 12 in English and 12 in French

[†]Two years spent at Essex and two years spent at one of our three partner institutions in France. All Law courses (except for LLB Law (Senior Status) and LLB English and French Laws (Maîtrise)) can be combined with a placement year. You would be responsible for finding your placement, with the support and guidance of the Employability and Careers Centre, in consultation with the School of Law. Some courses are available with a Year 0 start. See page 168 on Essex Pathways for details.

For more from our graduates and all the information you need on courses, modules and graduate destinations go to

essex.ac.uk/ug/law

LIBERAL ARTS

WHY ESSEX?

- 1** Create a course that has real academic breadth, tailored to your passions from politics, to science, to art
- 2** We have always been the highest-rated politics department in the UK (REF 2014, mainstream universities, Times Higher Education 2014)
- 3** Our students are among the most versatile, highly-sought and intellectually imaginative graduates



The subjects we study at school are tiny pieces of an infinite jigsaw. Taken in isolation, history, science, politics, geography, art and literature only reveal a small part of the overall picture. We take a different approach, drawing on multiple disciplines in order to discover new knowledge and reach a deeper understanding of the world we inhabit. If your interests are broad and you don't want to confine yourself to studying a single subject, BA Liberal Arts is the perfect course for you.

“I had the privilege of studying history, sociology and anthropology. Essex has opened my horizons and given me the skills I need to succeed.”

Daniel Roberts, BA Liberal Arts

COURSE	UCAS CODES			ENTRY REQUIREMENTS
	3 years	+ year abroad	+ placement year	
BA Liberal Arts	V900	QV00		A-levels: BBB, including one essay-based subject IB: 30 points, including a Higher Level essay-based subject grade 5
BA Journalism and Liberal Arts	P525	P527	P526	BTEC: DDM, depending on subject and units studied – advice on acceptability can be provided

Some courses are available with a Year 0 start. See page 168 on Essex Pathways for details.

For more from our graduates and all the information you need on courses, modules and graduate destinations go to

essex.ac.uk/ug/lib-arts

LITERATURE

Turn your love of reading into something more. The study of literature is a way to explore the world and different cultures, to visit the past and look anew at the present. Study literature at Essex and you may discover your new favourite author is someone you've never heard of before. At the same time gain fresh insights into the classics you thought you knew well. Study your passion, improve your writing and research skills and develop the kind of intelligence employers always value.

“I enjoyed the variety of literature and the lecturers’ passion for what they teach. If I had gone to a university that lacked the opportunities offered at Essex, my CV would be sad and bare. Thanks to all the chances I had to develop my skills, I found a position I really enjoy.”



Siril Grini, BA English Literature

WHY ESSEX?

- 1** You can study a diverse range of literature, including Arthurian legends, writings from Europe, the US and the Caribbean, the plays of Shakespeare, Romantic poetry, science fiction, and so much more
- 2** We encourage an interdisciplinary approach. Explore film, drama, journalism or creative writing alongside your degree of choice
- 3** Our academics are leaders in the field and encourage experimentation and originality in writing and thinking

COURSE	UCAS CODES		ENTRY REQUIREMENTS
	3 years	+ year abroad	
BA Drama and Literature	QW24	WQ24	A-levels: BBB, including one essay-based subject
BA English Literature	Q300	Q321	IB: 30 points, including a Higher Level essay-based subject grade 5
BA English and Comparative Literature	Q210	Q211	BTEC: DDM, depending on subject and units studied – advice on acceptability can be provided
BA English and United States Literature	T720	QT37	
BA Film Studies and Literature	QW26	PQ32	
BA Literature and Sociology	LQ32	QL23	
BA Literature and Creative Writing	QW30	QW31	
BA History and Literature			See QW24 above, but please note that this course does not require an essay-based subject

All of our Literature courses can be combined with a placement year. You would be responsible for finding your placement, with the support and guidance of the Employability and Careers Centre, in consultation with the Department of Literature, Film and Theatre Studies. Some courses are available with a Year 0 start. See page 168 on Essex Pathways for details.

For more from our graduates and all the information you need on courses, modules and graduate destinations go to

essex.ac.uk/ug/literature

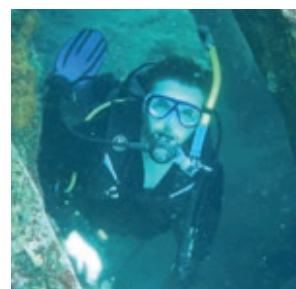
MARINE BIOLOGY

WHY ESSEX?

- 1** Learn with internationally recognised scientists and explore rocky shore, estuarine, Mediterranean and coral reef environments
- 2** Develop your skillset in our new STEM building that houses collaborative learning spaces and interdisciplinary teaching facilities
- 3** Receive SCUBA training, be part of our unique underwater lectures and conduct research on our coral reef expedition



Investigate the effects of environmental change on coral reef biodiversity with a field trip to the Coral Triangle, develop your skills in the latest ocean sampling techniques in Greece, and explore the Essex coastline. You can also volunteer with our Coral Reef Research Unit and join our Marine Conservation Society.



"I have long been interested in the environment and how mankind can correct the wrongs we have done to our home. I loved the autonomy, creativity and challenge of undertaking my own project in my final year. It cemented my desire to pursue a PhD."

Gareth Thomas, BSc Marine Biology

COURSE	UCAS CODES			ENTRY REQUIREMENTS
	3 years	+ year abroad	+ placement year	
BSc Marine Biology	C164	CC60	CC64	<p>A-levels: BCC, including Biology at grade B Pass required in science practical element of A-level Biology, Chemistry or Physics</p> <p>GCSE: Mathematics C/4</p> <p>IB: 28 points, including Higher Level Biology grade 5 and Standard Level Mathematics or Maths Studies grade 4, if not taken at Higher Level</p> <p>BTEC: DDD, depending on subject and units studied – advice on acceptability can be provided</p>

For more from our graduates and all the information you need on the course, modules and graduate destinations go to

essex.ac.uk/ug/marine-bio

MARKETING

WHY ESSEX?

- 1** Our BSc Marketing has been awarded Q-Step Affiliate status giving you the chance to show your numerical and creative skills on your degree transcript
- 2** Our state-of-the-art creative hub with bookable TV and radio studios mimics the environment found in top marketing and design agencies
- 3** A work placement or study abroad year is available with all our courses



Modern marketers must thrive in crowded, rapidly changing markets, facing increasing global integration. They must analyse data and information to identify emerging customer trends and be both creative and strategic to stay ahead of the competition. At Essex Business School, we encourage you to combine imagination, innovation and initiative to help you succeed in your marketing career.

“Studying so many different modules over three years showed me that I wanted to go into the marketing side of a business. I secured a direct marketing role straight after graduation.”

Srija Neupane, BSc Management and Marketing

COURSE	UCAS CODES			ENTRY REQUIREMENTS
	3 years	+ year abroad	+ placement year	
COLCHESTER CAMPUS				A-levels: BBB
BSc Management and Marketing	NN25	NNF5	NN2M	GCSE: Mathematics C/4
				IB: 30 points, including Standard Level Mathematics or Maths Studies grade 4, if not taken at Higher Level
SOUTHEND CAMPUS				
BSc Marketing*	N501	N502	N504	BTEC: DDD, depending on subject and units studied – advice on acceptability can be provided

*Awarded with Applied Quantitative Methods qualifier which means you can take a specific degree path to graduate with enhanced quantitative skills.

For more from our graduates and all the information you need on courses, modules and graduate destinations go to

essex.ac.uk/ug/marketing

MATHEMATICS

Mathematics is the language that underpins the rest of science. Maths at Essex is not what you would expect and has a genuinely broad reach; from exploring the economic impact of the social networks of cows, to the mathematical modelling of brain evolution to improve patient care – our research explores issues of global importance. This is your chance to explore issues that have a real impact on people's everyday lives and the world around us.

“Not only did my mathematical ability expand beyond belief but I also developed skills for life.”

Chloe Bacon, BSc Mathematics

WHY ESSEX?

- 1** You will be taught by world-class academics and researchers
- 2** Mathematics at Essex is ranked fourth in the UK for graduate employability (Guardian University Guide 2018)
- 3** We have placement opportunities and industry links with Aviva, Profusion, Mondaq, MSXInternational, AXA and Buck Consultants



COURSE	UCAS CODES			ENTRY REQUIREMENTS
	3 years	+ year abroad	+ placement year	
BSc Mathematics	G100	G102	G103	A-levels: BBB, including Mathematics Please note that we are unable to accept A-level Use of Mathematics in place of A-level Mathematics
BSc Mathematics with Physics [†]	G1F3	GCF3	G1F4	IB: 30 points, including Higher Level Mathematics or Maths Studies grade 5

[†]also requires A-level Physics grade B or IB Higher Level Physics grade 5 (or equivalent)
Some courses are available with a Year 0 start. See page 168 on Essex Pathways for details.

For more from our graduates and all the information you need on courses, modules and graduate destinations go to

essex.ac.uk/ug/maths

MODERN LANGUAGES

WHY ESSEX?

- 1** We offer French, German, Italian and Spanish from beginner to mastery level
- 2** If you study a language from scratch via our intensive route, we pay your tuition fees to attend a four-week summer school in the country where that language is spoken
- 3** Gain skills in translation, interpreting and subtitling, using the latest technology in our multimedia labs



Studying languages at Essex opens the door to a whole new world: different countries, people and cultures as well as excellent employment prospects.



“I loved being able to work in the studios using professional equipment and software... [after graduating] I accepted a position as an Investigation Specialist at Amazon, using my language skills as part of my work.”

Ashlie Simpson, BA Modern Languages with Professional Skills

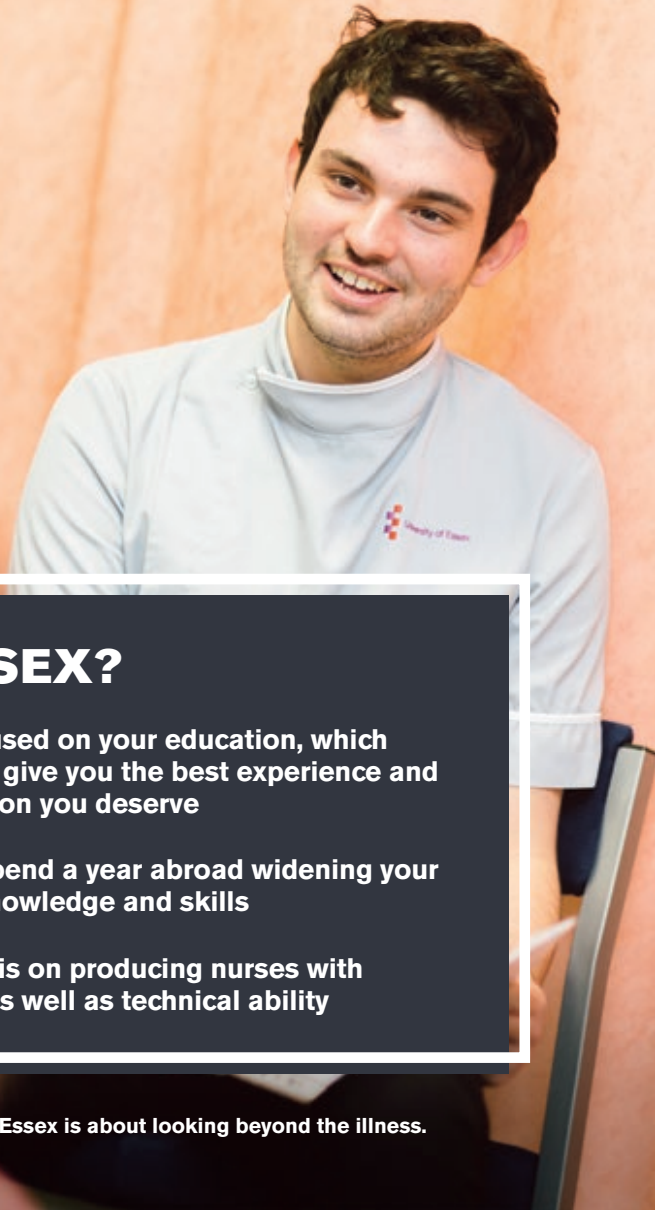
COURSE	UCAS CODES	ENTRY REQUIREMENTS
	3 years	4 years including year abroad
BA Modern Languages		R900
BA Language Studies	Q140	
BA French Studies and Modern Languages		RR19
BA German Studies and Modern Languages		RR9F
BA Italian Studies and Modern Languages		RR38
BA Spanish Studies and Modern Languages		RR49
BA Modern Languages and English Language		RQ93
BA Modern Languages and Linguistics		RQ91
BA Modern Languages and Teaching English as a Foreign Language		RX91
BA Spanish, Portuguese and Brazilian Studies		RT97
BA Modern Languages with Latin American Studies		R8T7
BA International Relations and Modern Languages		LRF9
MLang Modern Languages (Translation) (Integrated Masters)		R990
		A-levels: BBB IB: 30 points BTEC: DDD, depending on subject and units studied – advice on acceptability can be provided
		A-levels: ABB including language you wish to major in IB: 32 points including Higher Level grade 5 in the language you wish to major in

Some courses are available with a Year 0 start. See page 168 on Essex Pathways for details.

For more from our graduates and all the information you need on courses, modules and graduate destinations go to

essex.ac.uk/ug/modern-lang

NURSING: ADULT OR MENTAL HEALTH



WHY ESSEX?

- 1** We're focused on your education, which means we give you the best experience and the attention you deserve
- 2** You can spend a year abroad widening your nursing knowledge and skills
- 3** Our focus is on producing nurses with empathy as well as technical ability

Choosing nursing with us is about far more than just gaining a degree. You'll join a learning community where you're treated as a professional from day one, and where dignity, respect and consideration for people is at the heart of all we do. Input from current clinicians and our Service User Groups means that our courses continually evolve to meet the needs of society, and you'll get real insight into healthcare delivery today. Successfully completing one of our nursing courses means you will be eligible for professional registration with the Nursing and Midwifery Council and is the first step in your career as an adult or mental health nurse.

**"Throughout my three years
I was given the tools I needed
to flourish as a nurse."**

Tara Coumbe, BSc Nursing (Adult)

COURSE	UCAS CODES		ENTRY REQUIREMENTS
SOUTHEND OR COLCHESTER CAMPUS	3 years	+ year abroad	
BSc Nursing (Adult)	B740	B742	BTEC: DDD, depending on subject and units studied – advice on acceptability can be provided Access to HE Diploma: 45 level 3 credits at merit or above (in a relevant pathway)
BSc Nursing (Mental Health)	B760	B762	A-levels: BBC GCSE: Mathematics and English Language C/4

You must also have two satisfactory references along with a satisfactory Occupational Health Check and enhanced Disclosure and Barring Service Check (DBS) – both of these are organised by the University.
If English is not your first language you will require IELTS 7.0, with a minimum of 7.0 in each element.
As part of the selection process, you will be required to demonstrate a good knowledge and clear understanding of the NHS Constitution and its core values.

For more from our graduates and all the information you need on courses, modules and graduate destinations go to

essex.ac.uk/ug/nursing



OCCUPATIONAL THERAPY

WHY ESSEX?

- 1** Gain hands-on experience in our on-campus Community Living Space and in a range of professional settings through practice placements
- 2** Upon graduation you will be eligible to apply for registration with the Health and Care Professions Council, and professional membership of the College of Occupational Therapists
- 3** Small class sizes enable strong working relationships between students and experienced staff



Develop the skills you need to understand how occupational therapy can be used to enable people with physical, mental, social and occupational challenges to lead full and satisfying lives.

Learn through a blend of theory and practice. We offer placements in a range of settings, including traditional hospital and social care services as well as non-traditional settings such as prisons, care farms and schools.

“The variety of placements equipped me really well for practice and along with all the other opportunities of OT related activities gave me a great starting point for continuing professional development.”

Andrew Hughes, BSc Occupational Therapy

COURSE	UCAS CODES	ENTRY REQUIREMENTS
	3 years	
BSc Occupational Therapy	B939	A-levels: BBC, supported by 5 GCSEs at C/4 or above (including Mathematics, English Language and Science) BTEC: DMM, depending on subject and units studied – advice on acceptability can be provided Access to HE Diploma: 45 level 3 credits at merit or above (in a relevant pathway)

You must also have two satisfactory references along with a satisfactory Occupational Health Check and enhanced Disclosure and Barring Service Check (DBS) – both of these are organised by the University.
If English is not your first language you will require IELTS 7.0, with a minimum of 6.5 in each element.

For more from our graduates and all the information you need on the course, modules and graduate destinations go to

essex.ac.uk/ug/occu-therapy

ORAL HEALTH SCIENCE

WHY ESSEX?

- 1** We have a fantastic 99% success rate for employability (DLHE 2016)
- 2** You'll be eligible to register with the General Dental Council (GDC) as a dental hygienist on successful completion of our FdSc, and as a dental therapist following the successful completion of our BSc
- 3** You are involved in the treatment of patients – right from the beginning of your course



There is a growing need for skilled practitioners in oral health. Whether you are an aspiring dental hygienist or want to improve your existing qualifications to become a dental therapist, we can help. Clinicians with extensive experience in day-to-day dentistry are your instructors, as you gain a holistic approach to patient care.

“This course is unique, with ‘real life’ environments and experiences that prepares students for their future employment as dental hygienists.”

Sylwia Gorska, FdSc Oral Health Science

COURSE	UCAS CODES	ENTRY REQUIREMENTS
SOUTHEND CAMPUS		
FdSc Oral Health Science	B750 2 years	<p>A-levels: CC, including one core science subject or equivalent. Pass required in science practical element of A-level Biology, Chemistry or Physics</p> <p>GCSE: Mathematics, English and a Science related subject C/4</p> <p>BTEC: MPP, depending on subject and units studied – advice on acceptability can be provided</p> <p>Access to HE Diploma: 45 level 3 credits at pass or above (in a relevant pathway)</p> <p>National Dental Nurse Certificate or Diploma in Dental Nursing (with a minimum of two years experience)</p> <p>Your entry is based on your ability to study at Foundation degree level. Please visit our website for more information</p>
BSc Oral Health Science	B751 1 year (top-up)	<p>Please note this course is only open to existing registered dental hygienists. Visit our website for more information.</p>

You must also have a satisfactory reference along with a satisfactory Occupational Health Check and enhanced Disclosure and Barring Service Check (DBS) – both of these are organised by the University. As part of the selection process, you will be required to demonstrate a good knowledge and clear understanding of the NHS Constitution and its core values.

For more from our graduates and all the information you need on courses, modules and graduate destinations go to

essex.ac.uk/ug/oral-health-sci

PHILOSOPHY



WHY ESSEX?

- 1** We are in the top ten for Philosophy in the UK, according to the Times Good University Guide 2018
- 2** We specialise in real-world problems and focus on transferable skills
- 3** We have added more contact hours and abolished exams in the second and third year



We expand the realm of the possible. Philosophy is the rigorous study of ideas and arguments and we embrace this philosophical rigour to address the existential questions of human life. Gain a critical perspective on the social, political and economic challenges we face today.



Mandi Kaur, BA Philosophy

“Essex had so much to offer me...I wanted to focus on political philosophy but discovered new fields of philosophical research that I had no idea existed.”

COURSE	UCAS CODES			ENTRY REQUIREMENTS
	3 years	+ year abroad	+ placement year	
BA Philosophy	V500	V501		A-levels: BBB IB: 30 points BTEC: DDM, depending on subject and units studied – advice on acceptability can be provided
BA Philosophy, Religion and Ethics	VV56	VV5P		
BA Philosophy and Art History	VV53	VV5H		
BA Philosophy and History	VV15	VV5C		
BA Philosophy with Human Rights	V5M9	V5MX		
BA Philosophy and Law	MVC5	VM51		
BA Philosophy and Literature	QV25	VQ5F		
BA Philosophy and Politics	LV25	LV2M		
BA Philosophy and Sociology	LV35	VL53		A-levels: BBB, including one essay-based subject IB: 30 points, including a Higher Level essay-based subject grade 5
BA Journalism and Philosophy	P515	P517	P516	

All Philosophy courses can be combined with a placement year. You would be responsible for finding your placement, with the support and guidance of the Employability and Careers Centre, in consultation with the School of Philosophy and Art History. Some courses are available with a Year 0 start. See page 168 on Essex Pathways for details.

For more from our graduates and all the information you need on courses, modules and graduate destinations go to

essex.ac.uk/ug/philosophy

PHYSIOTHERAPY

Deliver therapy that helps transform lives. Learn to use physical approaches to promote, maintain and restore physical, psychological and social wellbeing. Through partnership and negotiation, physiotherapists work with patients and fellow health professionals to maximise the potential of human function and movement.

“I am looking forward to working as a physiotherapist and I feel that Essex has given me an excellent foundation to be successful in my career.”

Sarah Jolley, BSc Physiotherapy

WHY ESSEX?

- 1** Upon graduation you will be eligible to apply for professional registration with the Health and Care Professions Council, as well as the Chartered Society of Physiotherapy
- 2** Our close links with clinicians in practice will strengthen your career prospects
- 3** Small cohort sizes enable strong working relationships between students and experienced staff



COURSE

UCAS CODES

ENTRY REQUIREMENTS

	3 years	
BSc Physiotherapy	B169	<p>A-levels: BBB (to include a life science) supported by 6 GCSEs at C/4 or above (to include Mathematics, English Language and Science)</p> <p>Access to HE diploma: 30 Level 3 credits at Distinction and 15 at Merit with at least 12 Distinction credits in relevant Biological Science units. This must be supported by Level 2 Maths and English Language qualifications</p> <p>Entry requirements for students studying BTEC qualifications are dependent on subjects studied. Advice can be provided on an individual basis, as additional Anatomy and Physiology study may be required. The standard required is at Distinction level.</p>

You must also have two satisfactory references along with a satisfactory Occupational Health Check and enhanced Disclosure and Barring Service Check (DBS) – both of these are organised by the University. As part of the selection process, you will be required to demonstrate a good knowledge and clear understanding of the NHS Constitution and its core values.

For more from our graduates and all the information you need on the course, modules and graduate destinations go to

essex.ac.uk/ug/physio

POLITICS AND INTERNATIONAL RELATIONS

WHY ESSEX?

- 1** We have always been the highest-rated politics department in the UK (REF 2014, mainstream universities, Times Higher Education 2014)
- 2** We scored 92% student satisfaction in the latest National Student Survey (NSS 2017) – our students love it here
- 3** A number of our degrees are awarded with Applied Quantitative Methods, meaning our graduates have the enhanced quantitative skills employers are searching for



Want to know why earthquakes are deadlier where the Mafia is stronger? How cellphone activity predicts riots? Or why people who are scared of spiders are more conservative? Ask an Essex political scientist. Our research casts light on aspects of life you might never ordinarily connect to politics and government. Students travel from all over the world to enjoy the excellent education and career prospects we provide.

“Going to Essex was life changing. My career since leaving Essex has all been a result of the experiences and skills I gained whilst at University.”

Ben Wright, BA Politics

COURSE	UCAS CODES			ENTRY REQUIREMENTS
	3 years	+ year abroad	+ placement year	
BA Politics	L200	L201	L203	A-levels: BBB IB: 30 points BTEC: DDD, depending on subject and units studied – advice on acceptability can be provided
BA International Development*	L900	L901	L902	
BA International Relations	L258	L259	L260	
BA Political Theory and Public Policy	7L29	0A56	7L30	
BA Politics with Human Rights	L2M9	LFM9	L219	
BA Politics and International Relations	L225	L226	L227	
BSc Politics and International Relations*	L222	L223	L224	As L200 above, plus C/4 in GCSE Mathematics (or equivalent)
BA Political Economics	L150	L151	L152	
BA Philosophy, Politics and Economics	LOV0	LOVA	LOV1	
BA Economics and Politics	LL12	LL1F	LL13	

*subject to approval.

Some courses are available with a Year 0 start. See page 168 on Essex Pathways for details.

For more from our graduates and all the information you need on courses, modules and graduate destinations go to

essex.ac.uk/ug/politics

PSYCHOANALYTIC STUDIES / THERAPEUTIC CARE

WHY ESSEX?

- 1** Learn in small groups from expert practitioners and academics
- 2** Our approachable staff have clinical as well as academic expertise and experience
- 3** We scored 91% for student satisfaction – our students love it here (NSS 2017)



Do you want to know what's hidden in the mind? Are you fascinated by human behaviour? Or what underpins cultural and political activities? Our courses scrutinise all of these questions. Looking beneath the surface, at levels untouched by other disciplines, we explore the role of the unconscious mind in mental health, culture and society.



“I am currently a support worker for young adults with disabilities... Studying [at Essex] improved my confidence in myself and my abilities, to believe that I am capable of making a difference, even if it is small!”

Bekki Ager, BA Therapeutic Communications and Therapeutic Organisations

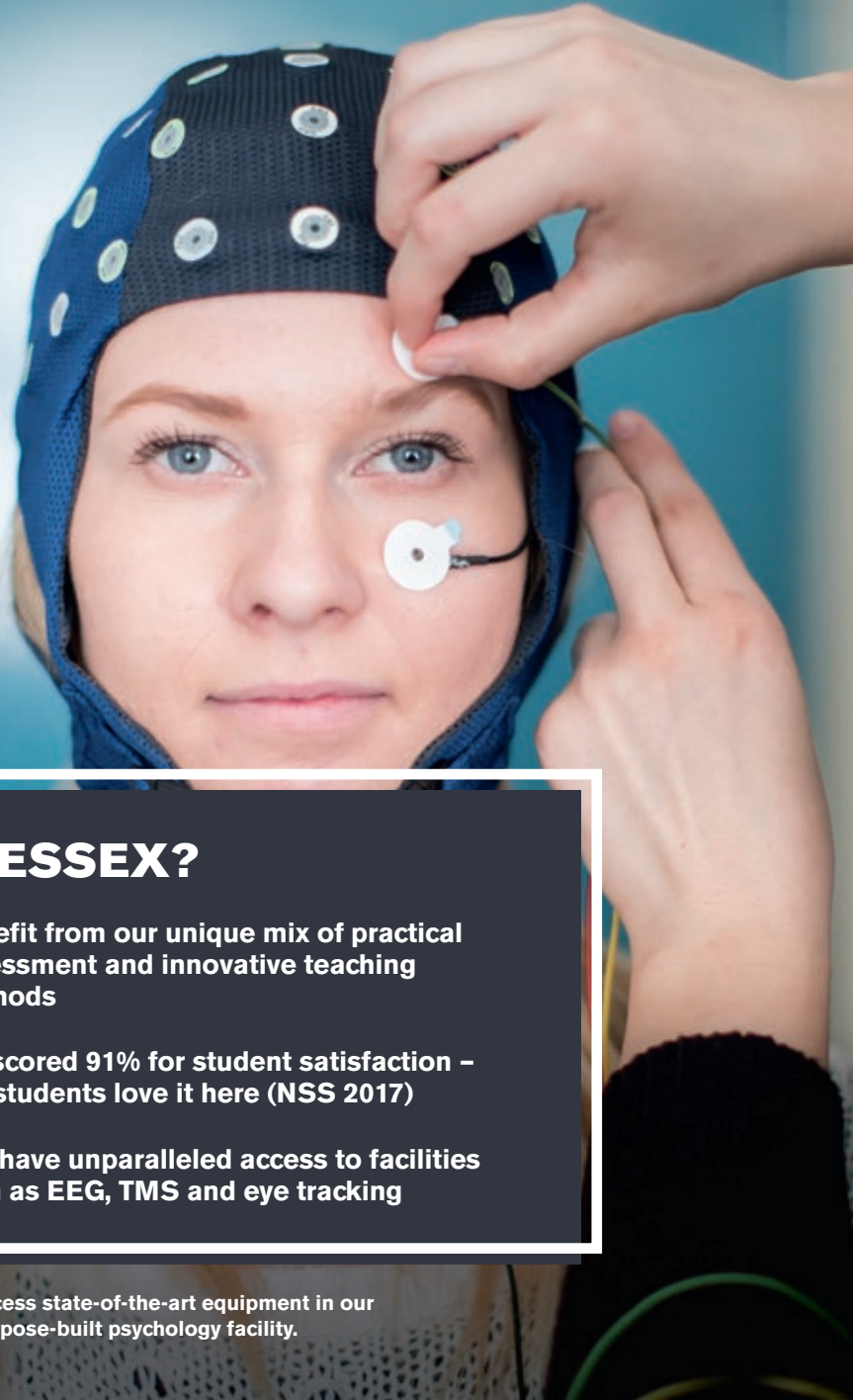
COURSE	UCAS CODES		ENTRY REQUIREMENTS
		+ year abroad + placement year	
COLCHESTER CAMPUS ONLY			
BA Psychoanalytic Studies	C890 (3 years)	C89B	C89A A-levels: BBB IB: 30 points
BA Therapeutic Communication and Therapeutic Organisations (Adult, Child and Adolescent)	1 year top up		You should have a Foundation Degree in Therapeutic Communication and Therapeutic Organisations at a merit level.
SOUTHEND CAMPUS ONLY			
BA Therapeutic Care	C847 (3 years)	C849	A-levels: BCC IB: 28 points
COLCHESTER OR SOUTHEND CAMPUSES			
FdA Therapeutic Communication and Therapeutic Organisations (Adult, Child and Adolescent)	2 years		You should demonstrate capacity to study a foundation degree, evidenced by A-level or equivalent qualifications.

Please apply for BA/FdA Therapeutic Communication and Therapeutic Organisations directly via our website: essex.ac.uk/direct
Some courses are available with a Year 0 start. See page 168 on Essex Pathways for details.

For more from our graduates and all the information you need on courses, modules and graduate destinations go to

essex.ac.uk/ug/psychoanalytic

PSYCHOLOGY



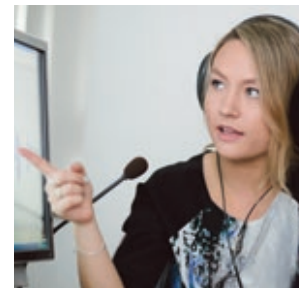
WHY ESSEX?

- 1** Benefit from our unique mix of practical assessment and innovative teaching methods
- 2** We scored 91% for student satisfaction – our students love it here (NSS 2017)
- 3** You have unparalleled access to facilities such as EEG, TMS and eye tracking



What drives people to act, respond, remember and recognise things in the way they do? How do we understand relationships and interpret the actions of others? If you're curious about how our minds work and what drives human behaviour, psychology is the perfect subject.

You can gain professional status on our British Psychological Society accredited courses. With our unparalleled combination of cutting-edge facilities and labs, you have the opportunity to get involved with a range of extracurricular activities and even take part in current research projects through our Research Experience Scheme.



“My department is amazing and has provided lots of opportunities to get involved and use all of the facilities provided.”

Frida Torgersen, BSc Psychology

COURSE	UCAS CODES			ENTRY REQUIREMENTS
	3 years	+ year abroad	+ placement year	
BSc Psychology	C800	C803	C811	A-levels: BBB GCSE: Mathematics C/4 IB: 30 points, including Standard Level Mathematics or Maths Studies grade 4, if not taken at Higher Level
BA Psychology	C802	C801	C810	
BSc Psychology with Cognitive Neuroscience	C808	C806	C809	BTEC: DDD, depending on subject and units studied – advice on acceptability can be provided

For more from our graduates and all the information on courses, modules and graduate destinations go to

essex.ac.uk/ug/psychology

SOCIAL WORK

Social work is all about people. It's an extremely rewarding and challenging profession. You'll need to be hard-working, adaptable, honest and, above all, passionate about finding long-term solutions and supporting positive changes for children, adults and families. At the heart of our course is the development of the skills, knowledge and understanding of how to support people to improve the personal, psychological and social aspects of their lives.

"I decided to study at Essex due to the facilities in the Forum and the Gateway buildings, which I felt would benefit me throughout my studies."

Ellese Degenhart, BA Social Work

WHY ESSEX?

- 1** Our partnerships with placement providers ensure you gain effective high-quality training
- 2** The programme meets the Health and Care Professions Council Standards of Proficiency, meaning you can practise as a social worker immediately upon graduation
- 3** Gain in-depth experience through working with children, young people, adults, families and communities



COURSE	UCAS CODES	ENTRY REQUIREMENTS
SOUTHEND CAMPUS	3 years	
BA Social Work	L500	A-levels: BBB GCSE: Mathematics and English C/4 or equivalent qualification IB: 30 points BTEC: DDM (in relevant subjects) Access to HE Diploma: 45 level 3 credits at merit or above (in a relevant pathway) <small>Some paid or voluntary experience in health or social care in a relevant social care or child care/education setting is also required</small>

You must also have a satisfactory reference along with a satisfactory Occupational Health Check and enhanced Disclosure and Barring Service Check (DBS) – both of these are organised by the University.
If English is not your first language, you will require IELTS 7.0, with a minimum of 6.5 in each element.

For more from our graduates and all the information you need on the course, modules and graduate destinations go to

essex.ac.uk/ug/social-work

SOCIOLOGY

WHY ESSEX?

- 1** Our department is ranked in the top 25 in the UK according to the Times Good University Guide 2018
- 2** Acquire a range of skills valued by employers, from data analysis to debating
- 3** Our teaching is underpinned by research – new ideas and theories are tested in the classroom

What unites us? What divides us? How do we tackle inequalities and enhance social justice? How do you define yourself, your family and others? Study sociology as a broad discipline or choose to combine it with a particular specialism including social psychology, counselling or criminology. Social Anthropology takes a closer look at human interactions, from our personal relationships to broader cultural exchanges.

“I chose to join the Department of Sociology due to its reputation as being one of the most prestigious for sociological research in the country.”

Emine Tarim, BA Sociology

COURSE	UCAS CODES			ENTRY REQUIREMENTS
	3 years	+ year abroad	+ placement year	
BA Sociology	L300	L301	L306	A-levels: BBB IB: 30 points BTEC: DDD, depending on subject and units studied – advice on acceptability can be provided
BA Communications and Digital Culture	LP33	PL33	LP34	
BA Sociology and Criminology	LM39	LMH9	LM38	
BA Sociology with Psychosocial Studies	LJC8	LJ8C	LCJ8	
BA Social Anthropology	LL36	LL3P	LL6P	
BA Social Anthropology with Human Rights	LL37	LL38	LL39	
BA Sociology with Human Rights	L3M9	LMJ9	L3J9	
BA Sociology and Politics	LL32	LL23	LL24	
BA Sociology with Social Psychology	CL83	CLV3	CL93	
BSc Sociology with Applied Quantitative Research Methods	L315	L316	L317	
BA Sociology with Counselling Skills*	L332	L331	L330	

*subject to approval

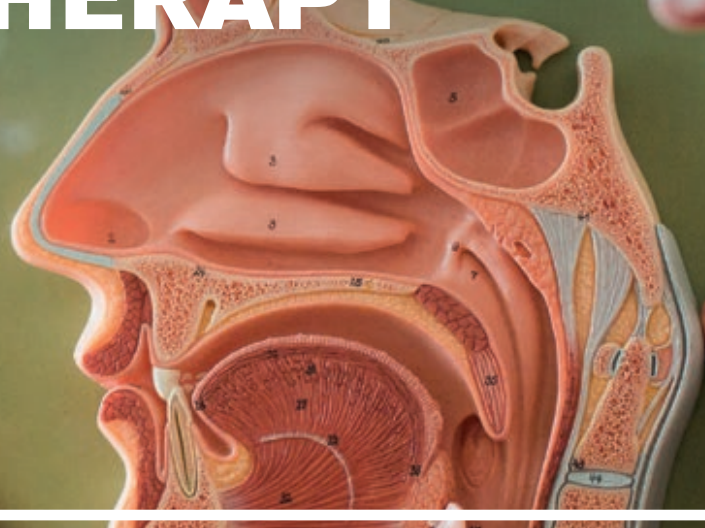
Some courses are available with a Year 0 start. See page 168 on Essex Pathways for details.

For more from our graduates and all the information you need on courses, modules and graduate destinations go to

essex.ac.uk/ug/sociology



SPEECH AND LANGUAGE THERAPY



WHY ESSEX?

- 1** Undertake placements with a wide range of practice educators reflecting the growing employment opportunities for speech and language therapists
- 2** You're taught by experienced, registered, speech and language therapists with varied professional and research interests
- 3** On graduation you are eligible to apply for professional registration with the Health and Care Professions Council and the Royal College of Speech and Language Therapists



Speech and language therapy is about so much more than 'what it says on the tin'. Speech and language therapists support individuals with communication, eating and drinking difficulties across their lifespan. Through a combination of placements and on-campus learning, you'll develop professional reasoning and evidence-based practice skills. We offer small group and active learning opportunities to enable you to develop your own style.



Natasha Sore, Lecturer in Speech and Language Therapy

"Our course prepares you to work in a wide range of organisations such as the NHS, local authorities, schools and colleges, charities and independent companies."

COURSE	UCAS CODES			ENTRY REQUIREMENTS
	3 years	+ year abroad	+ placement year	
BSc Speech and Language Therapy	B630	B631	B632	<p>A-levels: BBB</p> <p>GCSE: English Language, Mathematics and Science C/4</p> <p>Access to HE Diploma: 45 level 3 credits at merit or above (in a relevant pathway)</p> <p>IB: 30 points, including Standard Level English, Mathematics or Maths Studies and Science grade 4, if not taken at Higher Level</p> <p>BTEC: DDD, depending on subject and units studied – advice on acceptability can be provided</p>

You must also have two satisfactory references along with a satisfactory Occupational Health Check and enhanced Disclosure and Barring Service Check (DBS) – both of these are organised by the University.

If English is not your first language you will require IELTS 8.0, with a minimum of 7.5 in each element.

As part of the selection process you will be required to demonstrate a good knowledge and clear understanding of the significance of the NHS constitution and its core values.

For all the information you need on the course, modules and graduate destinations go to

essex.ac.uk/ug/slt

SPORT, EXERCISE, PERFORMANCE AND COACHING

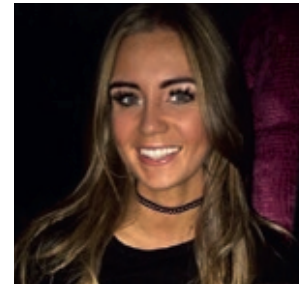


WHY ESSEX?

- 1** Our sports science courses achieved a 98% student satisfaction rating overall (NSS 2017)
- 2** Make the most of our brand new facilities in the £13.2M Essex Sport Arena
- 3** You have the opportunity to gain work placement experience in professional sports clubs



How do Olympic athletes train? Who makes a good coach? What is the secret behind the world's fastest sprinter? At Essex we take sport and exercise seriously. We help you to understand the biology, physiology, biomechanics and psychology of sport, exercise and physical activity. You are taught by internationally recognised scientists and practicing coaches using our state-of-the-art facilities. Turn your passion for fitness and health into a career.



“All the academics are really helpful...their expertise, experience and enthusiasm really enables students to develop and grow throughout their University career.”

Nikki Twine, BSc Sports and Exercise Science

COURSE	UCAS CODES			ENTRY REQUIREMENTS
	3 years	+ year abroad	+ placement year	
BSc Sports and Exercise Science	C600	C602	C606	A-levels: BCC, including grade B in one science subject or Mathematics (PE and Psychology count as science A-levels) GCSE for BSc Sports and Exercise Science: Mathematics and Science grade C/4 GCSE for BSc Sports Performance and Coaching: Mathematics grade C/4
BSc Sports Performance and Coaching	C607	C608	C609	IB: 28 points, including Higher Level Science or Mathematics grade 5, and Standard Level Mathematics and Science grade 4, if not taken at Higher Level BTEC: DDM, depending on subject and units studied – advice on acceptability can be provided

If you do not meet the GCSE Science requirement but you have A-level Science or equivalent, please get in touch for advice.

For more from our graduates and all the information on courses, modules and graduate destinations go to

essex.ac.uk/ug/sports-coaching

SPORTS THERAPY



WHY ESSEX?

- 1** You have access to our professional, state-of-the-art research equipment
- 2** Our students love studying sports therapy at Essex - we have 98% student satisfaction (NSS 2017)
- 3** Our course is accredited by the Society of Sports Therapists – your passport to a range of careers



Gain the specialist skills and knowledge required to work as a sports therapist. With a focus on employability and self-development, we support you to become an autonomous practitioner. Taught by experts in the fields of sports therapy and sports and exercise science, you develop a range of treatment options including electrotherapy, exercise and manual skills.

“Essex provides the best possible experience with regard to treating a variety of different athletes with a range of injuries and conditions.”

Annabel Semmence, BSc Sports Therapy

COURSE	UCAS CODES			ENTRY REQUIREMENTS
	3 years	+ year abroad	+ placement year	
BSc Sports Therapy	C603	C605	C604	<p>A-levels: BBB, including one science subject or Mathematics (PE and Psychology count as science A-levels)</p> <p>GCSE: Mathematics and Science C/4.</p> <p>IB: 30 points, including Higher Level Science or Mathematics grade 5 and Standard Level Mathematics and Science grade 4, if not taken at Higher Level. Maths Studies is also acceptable.</p> <p>BTEC: DDD, depending on subject and units studied – advice on acceptability can be provided</p>

If you do not meet the GCSE Science requirement but you have A-level Science or equivalent, please get in touch for advice.

For more from our graduates and all the information you need on the course, modules and graduate destinations go to

essex.ac.uk/ug/sports-therapy

TOURISM

WHY ESSEX?

- 1** You study in a tourist destination just an hour from London
- 2** You have the opportunity to broaden your experience by completing a placement year or spending a year studying abroad
- 3** You develop your knowledge of the tourism industry alongside your management skills



Tourism management equips you with the sought-after business skills and industry knowledge so you can excel in your career, explore new places and develop your management expertise. Our staff have a strong background in the tourism industry, providing real-world experience.



Dr Giovanni Serafini, Programme Director

“Tourism management prepares graduates to embark in a career within a flourishing and resilient economic sector. The variety of topics which cover business, tourism and soft skills development enable students to attain the competencies sought by employers.”

COURSE	UCAS CODES			ENTRY REQUIREMENTS
	3 years	+ year abroad	+ placement year	
SOUTHEND CAMPUS				
BSc Tourism Management	N832	N833	N834	A-levels: BBB GCSE: Mathematics C/4 IB: 30 points, including Standard Level Mathematics or Maths Studies grade 4, if not taken at Higher Level BTEC: DDD, depending on subject and units studied – advice on acceptability can be provided

For all the information you need on the course, modules and graduate destinations go to

essex.ac.uk/ug/tourism

ESSEX PATHWAYS

Undergraduate degrees
with a Year 0 pathway



WHY ESSEX?

- 1** Develop your knowledge and skills while benefiting from a dedicated support team
- 2** Collaborate with experts during your studies and take the time you need to prepare for professional life
- 3** Create the future you want and start without delay

With a Year 0 at Essex you can unlock your potential, expand your knowledge and build your academic skills. We provide you with the resources you need to get the best from your studies, whatever your educational background. If you have big ideas, we can give you the confidence to express them. Join Essex as a Year 0 student and find your own way forward.

“My experience during my Year 0 in Computer Science has been a blessing. Without it, I would have struggled to reach my full potential.”

Kasey Adu-Poku, BSc Computer Science

At Essex we have a range of degree courses with a Year 0 pathway for UK and EU students which are listed on the following pages. If you have not met the entry requirements for a particular degree course but know Essex is the right place for you, then a Year 0 Essex Pathways course is your way in.

As well as traditional October start dates, we also offer January starts for some courses, meaning you can fit more time in for work or travel, before completing your overall degree in a shorter amount of time.

Non-EU, international students should look at page 179 for details about foundation courses at University of Essex International College.

For more from our graduates and all the information you need on courses, modules and graduate destinations go to

essex.ac.uk/essex-pathways



Undergraduate degrees with a Year 0 pathway

These courses are designed for students who have not yet reached the required academic level for undergraduate study. We develop your subject knowledge as well as your academic skills. Our courses include a foundation year, known as Year 0, followed by a further three or four years, leading to a Bachelors degree.

For further information, including how to apply, start dates and eligibility criteria (these courses are available to UK and EU students only) visit essex.ac.uk/essex-pathways

COURSE	UCAS CODES		ENTRY REQUIREMENTS
	4 years	5 years (year abroad)	
ESSEX BUSINESS SCHOOL			
BSc Accounting	N401		A-levels: DDD, or equivalent in UCAS tariff points, to include 2 full A-levels. GCSE: Mathematics C/4 (or equivalent)
BSc Accounting and Finance	NN43		
BSc Accounting and Management	NN42		
BSc Accounting with Economics	N4L1		
BSc Business Management	N201		
BSc Finance	N301		
BSc Finance and Management	N347		
LANGUAGE AND LINGUISTICS			
BA English Language and Linguistics	QQ16		A-levels: DDD, or equivalent in UCAS tariff points, to include 2 full A-levels.
BA English Language and Literature	QQ24		
BA Teaching English as a Foreign Language	QX41		
BA Language Studies	Q143		
BA Linguistics	Q102		
BA French Studies and Modern Languages		RR20	A-levels: DDD, or equivalent in UCAS tariff points, to include 2 full A-levels. If Portuguese is taken as the major language, A-level Pass in Italian, Spanish or Portuguese or first-language fluency in Italian, Romanian or Spanish is required.
BA German Studies and Modern Languages		RR90	
BA International Relations and Modern Languages		LR59	
BA Italian Studies and Modern Languages		RR40	
BA Modern Languages		R999	
BA Modern Languages and English Language		RQ99	
BA Modern Languages and Linguistics		RQ98	
BA Modern Languages and Teaching English as a Foreign Language		R8T8	
BA Modern Languages with Latin American Studies		R8T9	
BA Portuguese Studies and Modern Languages		RR60	
BA Spanish Studies and Modern Languages		RR50	
BA Spanish, Portuguese and Brazilian Studies		RT99	

COURSE	UCAS CODES		ENTRY REQUIREMENTS
	4 years	5 years (year abroad)	
COMPUTER SCIENCE AND ELECTRONIC ENGINEERING			
BSc Computer Science	G403		A-levels: DDD, or equivalent in UCAS tariff points, to include 2 full A-levels.
BEng Computers with Electronics	GH46		GCSE: Mathematics C/4 (or equivalent)
BEng Electronic Engineering	H61P		A-levels: DDD, or equivalent in UCAS tariff points, to include 2 full A-levels.
BEng Communications Engineering	HP41		GCSE: Mathematics and Science C/4 (or equivalent)
MATHEMATICS			
BSc Mathematics	G104		A-levels: DDD, or equivalent in UCAS tariff points, to include 2 full A-levels. GCSE: Mathematics and Science C/4 (or equivalent)
BSc Actuarial Science	N325		
BSc Mathematics and Computing	G1G8		
BSc Mathematics and Statistics	9K18		
BSc Economics and Mathematics	LG18		
BSc Economics with Mathematics	L1G8		
BSc Finance and Mathematics	GN18		
BSc Data Science and Analytics	I1GF		
ECONOMICS			
BSc Economics	L103		A-levels: DDD, or equivalent in UCAS tariff points, to include 2 full A-levels. GCSE: Mathematics C/4 (or equivalent)
BA Economics	L102		
BSc Financial Economics	L117		
BA Financial Economics	L118		
BSc International Economics	L161		
BA International Economics	L160		
BSc Management Economics	L191		
BA Management Economics	L190		
SOCIAL SCIENCES			
BA Communication and Digital Culture	P300		A-levels: DDD, or equivalent in UCAS tariff points, to include 2 full A-levels.
BA Criminology	M903		
BA International Relations	L250		
BA Politics	L202		
BA Sociology	L304		
BA Sociology and Criminology	LMHX		
LAW			
LLB Law	M101		A-levels: DDD, or equivalent in UCAS tariff points, to include 2 full A-levels.

COURSE	UCAS CODES		ENTRY REQUIREMENTS
	4 years	5 years (year abroad)	
LITERATURE, FILM AND THEATRE STUDIES			
BA Creative Writing	W808		A-levels: DDD, or equivalent in UCAS tariff points, to include 2 full A-levels.
BA Drama	W408		
BA Drama and Literature	WQ28		
BA English and Comparative Literature	Q218		
BA English and United States Literature	T728		
BA English Literature	Q320		
BA Film and Creative Writing	PW88		
BA Film Studies	W628		
BA Film Studies and Literature	PQ38		
BA Literature and Creative Writing	QW38		
BA Literature and Sociology	LQ38		
INTERDISCIPLINARY STUDIES			
BA American Studies (United States)		T710	A-levels: DDD, or equivalent in UCAS tariff points, to include 2 full A-levels.
BA Criminology and American Studies		MT28	
BA American Studies (United States) with Film		T7W8	
BA Global Studies		L908	
BA Latin American Studies		T7N3	
BA Latin American Studies with Business Management		T7N4	
BA Latin American Studies with Human Rights		T7M8	
BA Liberal Arts	LQV0	Q900	
BA European Studies		R008	
BA European Studies with Politics		R9L8	
BA European Studies with French		R9R8	A-levels: DDD, or equivalent in UCAS tariff points, to include 2 full A-levels.
BA European Studies with German		R9R6	
BA European Studies with Italian		R9R7	If Portuguese is taken as the major language, A-level Pass in Italian, Spanish or Portuguese or first-language fluency in Italian, Romanian or Spanish is required.
BA European Studies with Spanish		R9R9	
BA European Studies with Modern Languages		R9T8	
PHILOSOPHY AND ART HISTORY			
BA Philosophy	V502	V508	A-levels: DDD, or equivalent in UCAS tariff points, to include 2 full A-levels.
BA Philosophy and Art History	VV54	VVHP	
BA Philosophy and History	VV51	VV5X	
BA Philosophy and Law	MVC8	VM58	
BA Philosophy and Literature	VQ51	VQ58	
BA Philosophy and Politics	LV8M	LV2H	
BA Philosophy and Sociology	LV83	VL58	
BA Philosophy with Human Rights	V5M8	VLM8	
BA Philosophy, Religion and Ethics	VV58	VV59	

COURSE	UCAS CODES		ENTRY REQUIREMENTS
	4 years	5 years (year abroad)	
BA Curatorial Studies	V359	V35B	A-levels: DDD, or equivalent in UCAS tariff points, to include 2 full A-levels.
BA Art History and History	VV38	VV3B	
BA Film Studies and Art History	VW38	VW3B	
BA Literature and Art History	QV2H	QV3B	
BA Art History	V350	V31B	
BA Art History with Modern Languages		VR3B	A-levels: DDD, or equivalent in UCAS tariff points, to include 2 full A-levels. If Portuguese is taken as the major language, A-level Pass in Italian, Spanish or Portuguese or first-language fluency in Italian, Romanian or Spanish is required.
BA Art History and Modern Languages		V3RB	
HISTORY			
BA History and Economics	LV18		A-levels: DDD, or equivalent in UCAS tariff points, to include 2 full A-levels. GCSE: Mathematics C/4 (or equivalent)
BA History	V102		A-levels: DDD, or equivalent in UCAS tariff points, to include 2 full A-levels.
BA History and Criminology	MV98		
BA History and Literature	QV2C		
BA History and Sociology	LV38		
BA History with Film Studies	V1W8		
BA History with Human Rights	V1L8		
BA Modern History	V144		
BA Modern History and International Relations	VL18		
BA Modern History and Politics	LV28		
PSYCHOANALYTIC STUDIES			
BA Childhood Studies	L523		A-levels: DDD, or equivalent in UCAS tariff points, to include 2 full A-levels.
BA Psychoanalytic Studies	L523		

You can apply through UCAS for these courses. EU students can apply directly through our website essex.ac.uk/direct

I so do not miss
A levels results day
but good luck to
everyone!!

@Uni_of_Essex was
the best decision
I've ever made

🐦 @SamuelWebb

Just been to the
@Uni_of_Essex
Open Day and I'm
so excited to be
studying there
next year

🐦 @imkatie

People from
Essex uni are
amazing I
swear!

🐦 @Yiigaa

Uni_of_Essex
Best Open
Day ever!

🐦 @Lily_Flower11

📺 /uniofessex

🐦 /Uni_of_Essex

📺 /uniessex

📺 /uniessex

🐦 /uniofessex

👤 uniofessex

ENOUGH ABOUT US WE'D LOVE TO HEAR FROM YOU

There's a whole online community talking about student life at Essex. Join the conversation on Facebook, keep up with the latest news on Twitter, get a glimpse of campus life on Instagram and Snapchat and see what we've been up to on YouTube. We have an open-ear policy when it comes to social media and respond to every enquiry – or message us via Live Chat on our website and get your questions answered without delay.

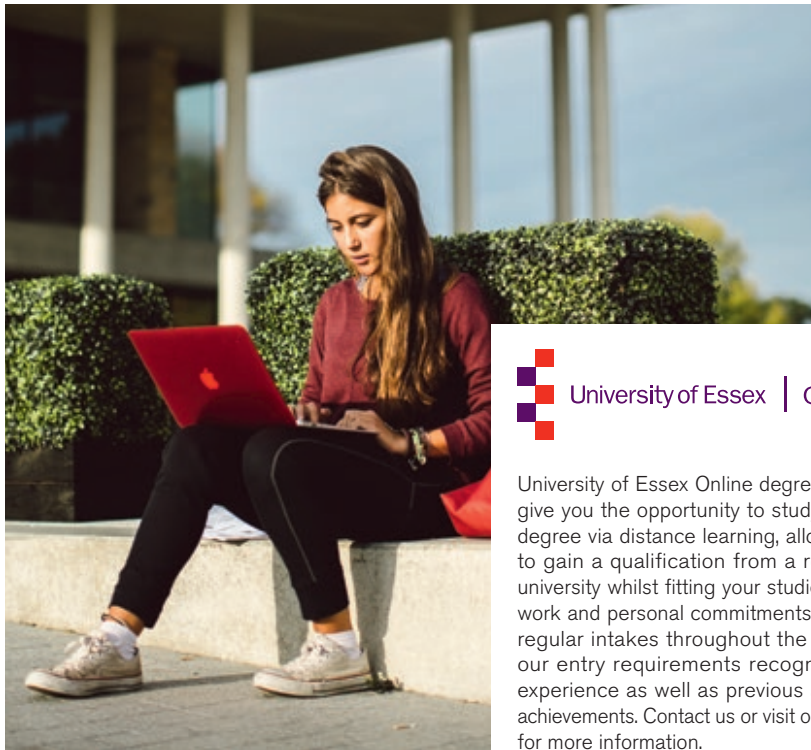
So, if something is on your mind, get in touch, we love a good chat!

#myEssex

essex.ac.uk/we-are-essex

OUR UK PARTNERS

We are committed to making an Essex education available through a range of provision, working closely with partner institutions to develop and maintain high-quality and accessible learning opportunities.



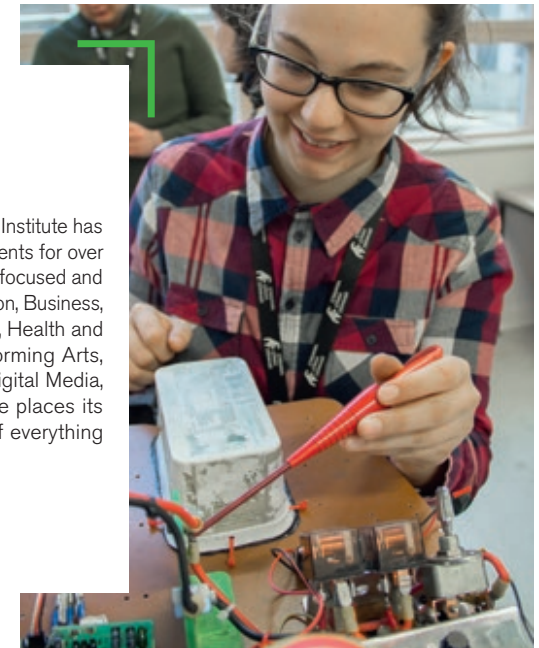
University of Essex Online degree courses give you the opportunity to study for your degree via distance learning, allowing you to gain a qualification from a respected university whilst fitting your studies around work and personal commitments. We have regular intakes throughout the year, and our entry requirements recognise work experience as well as previous academic achievements. Contact us or visit our website for more information.

T +44 (0)800 0527 526
E enquiries@online.essex.ac.uk
online.essex.ac.uk



University Centre Colchester at Colchester Institute has been helping to transform the lives of students for over 50 years. They provide a range of industry-focused and vocationally-relevant degrees in Construction, Business, Management, Computing, IT, Counselling, Health and Social Care and the Creative and Performing Arts, including: Art, Design, Fashion, Music, Digital Media, Theatre and Acting. Colchester Institute places its students and their future at the heart of everything they do.

T +44 (0)1206 712000
E info@colchester.ac.uk
colchester.ac.uk



University of Essex International College, a partnership between the University of Essex and Kaplan International Pathways, provides pathway courses that prepare international students for their degrees. Faculty-aligned Foundation Certificates and subject-specific International Year One courses will be delivered at the University's Colchester campus and awarded by Kaplan. Successful completion of one of these courses will enable progression to a relevant three-year degree course at the University. Kaplan provides fantastic study opportunities to international students and since 2005, thousands of students from every corner of the globe have started their path to success with a Kaplan pathway course.

kaplanpathways.study/contact-essex
kaplanpathways.partners/essex

OUR GREAT LOCATION



COLCHESTER TO:

- Central London: 60 miles (97km); 45 minutes to 1 hour by train, 1 hour and 40 minutes by car.
- Stansted Airport: 33 miles (53km); 1 hour and 15 minutes by bus, 50 minutes by car.
- Southend Airport: 41 miles (66km); 1 hour and 15 minutes by train, 1 hour by car.
- Gatwick Airport: 83 miles (133km); 1 hour and 50 minutes by train, 1 hour and 40 minutes by car.
- Heathrow Airport: 90 miles (150km); 2 hours and 10 minutes by train, 1 hour and 55 minutes by car.
- Harwich International Port: 20 miles (33km); 25 minutes by train, 35 minutes by car.

SOUTHEND TO:

- Central London: 40 miles (64km); 45 minutes to 1 hour by train, 1 hour and 20 minutes by car.
- Southend Airport: 3 miles (5km); 15 minutes by bus, 10 minutes by car.
- Stansted Airport: 40 miles (64km); 1 hour and 30 minutes by bus, 1 hour by car.
- Gatwick Airport: 62 miles (100km); 2 hours by train, 1 hour and 10 minutes by car.
- Heathrow Airport: 76 miles (122km); 2 hours by train, 1 hour and 20 minutes by car.
- Harwich International Port: 61 miles (98km); 2 hours by train, 1 hour and 25 minutes by car.

OUR CAMPUSES

- C** Colchester
- S** Southend
- L** Loughton



LOUGHTON TO:

- Central London: 16 miles (25km); 42 minutes by train, 45 minutes by car.
- London City Airport: 14 miles (19km); 40 minutes by train, 25 minutes by car.
- Stansted Airport: 25 miles (43km); 1 hour and 28 minutes by train, 30 minutes by car.
- Gatwick Airport: 59 miles (103km); 1 hour and 30 minutes by train, 1 hour and 20 minutes by car.
- Heathrow Airport: 33 miles (74km); 40 minutes by train, 1 hour by car.
- Harwich International Port: 74 miles (120km); 1 hour and 30 minutes by car.

essex.ac.uk/travel

IMPORTANT INFORMATION

About this prospectus

When we might make changes to advertised courses and other information

This prospectus tries to answer your questions about life and academic provision on offer at the University of Essex. It was prepared early in 2018 and refers to courses which will be available in October 2019. The University makes every effort to ensure the prospectus is accurate at the time it is printed. Exceptionally, it can be necessary to make changes, for example to courses, facilities or fees due to legitimate staffing, financial, regulatory or academic reasons. Examples of such reasons might include a change of law or regulatory requirements, industrial action, lack of demand, departure of key personnel, change in government policy, or withdrawal or reduction of funding. Changes to courses may for example consist of variations to the content and method of delivery of programmes, courses and other services, to discontinue programmes, courses and other services and to merge or combine programmes or courses. If a course change or closure is proposed in such circumstances the University will take all reasonable steps to minimise disruption to students. This will include informing students of the changes in advance and giving them appropriate opportunity to comment on the proposals.

A course would only be closed in exceptional circumstances. If it is ever necessary to close a course the University's preferred approach would be to continue to teach current students on that course until they have completed their studies. If exceptionally that is not possible, the University will explore other options with the affected students for example by considering whether those students can be offered places on alternative courses, or whether their studies can be completed at another institution.

essex.ac.uk/subjects
essex.ac.uk/fees

No liability for matters outside our control

The University cannot be held responsible for failure/delay in performing obligations caused by things beyond its reasonable control, such as fire, flood or industrial action.

University terms and conditions, procedures, rules and regulations

Applicants are considered in line with the University's Undergraduate Admissions Policy and the Regulations relating to Admission (listed under Academic Regulations), which can be found online at:

essex.ac.uk/admissions-policy
essex.ac.uk/admissions-regs

If your application to the University of Essex is successful, by accepting the offer you will be entering into a legal contract with us, subject to fulfilling any conditions included in your offer. Your rights and obligations to us and our rights and obligations to you will be detailed in the information that we provide once the offer has been made. Applicants and registered students must comply with the University's regulations, policies and procedures as part of their contract. A full set of the University Regulations is available at:

essex.ac.uk/regs

The full Procedures, Rules and Regulations of the University, governing how it operates, are set out in the Charter, Statutes and Ordinances and in the University Regulations, Policy and Procedures.

essex.ac.uk/about/governance/regulations/students.aspx

Quality assurance

The Quality Assurance Agency's Higher Education Review of the University in December 2014 covered every aspect of the University's provision and confirmed that the University had met all expectations and meets national requirements for standards and quality.

The University was commended for the strong focus on improving all areas of the student learning experience. The high-quality research environment and development opportunities offered to postgraduate research students were recognised, along with our commitment to listening and responding to student feedback, and to providing our students with opportunities to improve their employment skills and prospects.

qaa.ac.uk

Complaints procedure

The University is committed to equality of opportunity for all applicants, and the University's admissions policies, procedures and processes are designed to ensure that all applicants are considered fairly, consistently and in accordance with professional standards. The Undergraduate Admissions Office strives to provide a high quality experience for all applicants throughout the admissions cycle. In the event that an applicant is dissatisfied with any aspect of the University's admissions process, procedure or policy and wants to submit a formal complaint, they can do so via the 'Complaints policy for applicants'. This policy can be found in full via the link in our Undergraduate Admissions Policy at:

essex.ac.uk/admissions-policy

Policy statement on equality and diversity

The University of Essex celebrates diversity, challenges inequality, and is committed to sustaining an inclusive and diverse community that is open to all who have the potential to benefit from membership of it. We ensure equality of opportunity for all its members. We expect staff, students and visitors to be treated, and to treat each other, with dignity and respect regardless of age, disability, gender reassignment, marriage and civil partnership, pregnancy and maternity, race, religion or belief, sex, sexual orientation, socio-economic background, political beliefs and affiliations, family circumstances or other irrelevant distinction.

Government funding

At the time of going to print, some detailed aspects of government funding had not been announced. As such, our figures are based on amounts for students entering in 2018, and may be subject to change or real-term increases. Visit our website for more information.

essex.ac.uk/fees

Tuition fee increases during your studies

The tuition fees for 2019-20 have not yet been confirmed. We will publish them on the website as soon as they are available.

essex.ac.uk/fees

For reference, the fees for UK and Channel Islands students commencing their studies in 2018 were set at £9,250.

In previous years, the tuition fee has increased for each academic year of study. The 2018 fee was frozen but we do not know yet if, or when, this will change. Previous increases were limited to the annual increase in the RPI-X index.

Fees for full-time undergraduate students with a Home fee status (which currently includes EU students*) remain subject to UK Government approval.

* The fee status of EU students may be subject to review should the terms of the UK's withdrawal from the European Union change the legal status of EU students.

For full-time undergraduate students with an international fee status, this annual increase will be 5% or the annual increase in the RPI-X index, whichever is the higher.

essex.ac.uk/fees

East 15 Acting School at our Loughton Campus

This prospectus refers mainly to the services, facilities and courses on offer at our Colchester Campus and at our Southend Campus. Our Loughton Campus is the base for students on many of East 15 Acting School's courses and includes state-of-the-art studios, technical equipment and innovative theatre space. Our Loughton Campus is just five minutes from the nearest London Underground station, Debden, on the east end of the Central line.

east15.ac.uk

Alternative formats

This prospectus is available in large print, audio and Braille formats. Please contact our Admissions Office for further information.

Eadmit@essex.ac.uk

Photography

Every effort has been made to obtain permission to reproduce the images contained herein. Please get in touch if you have any queries or any information relating to the images

Eprospectus@essex.ac.uk

Data for marketing purposes

Data has been selected for marketing purposes but all claims are based on the most recent data that were available at the time of print: Research Excellence Framework (REF) results are based on 2014 data*; QS World University Rankings results are based on 2017 data; QS World University Rankings by Subject results are based on 2017 data; Times Higher Education (THE) World University Rankings results are based on 2017 data; National Student Survey (NSS) results based on 2017 data; employability figures are based on the Destinations of Leavers from Higher Education survey (DLHE 2016); Times Good University Guide (TGUG) results are based on 2018 data. Guardian University Guide results are based on 2018 data.

* Intensity-weighted GPA is denoted by the phrase 'research excellence', raw GPA is denoted by the phrase 'research quality'.

INDEX

For subject areas, please see contents on page 68

Access to HE Diploma	64	Libraries	23, 24
Accommodation, residential	50	Living expenses	67
Applying to Essex	62	Location and travel	178
Campus – Colchester	42	Mature students	34
Campus – Southend	46	Open Days	60
Careers and employability	32	Placements and internships	32
Childcare (see Day Nursery)		Postgraduate study	16
Clubs and societies	54	Qualifications (see entry requirements)	
Contact information	184	Quality assurance	180
Culture and arts	25, 56	Rankings	2
Day Nursery	34, 44	Research	30
Deferred entry	63	Second year entry	63
Disabled students	34	Sport	23, 26, 54
Distance learning (see University of Essex online)		Student satisfaction	2
East 15 Acting School	12, 74	Student stories	8-18
Edge Hotel School	118	Student support	34
English language requirements and support	64	Students' Union (SU)	54
Entry requirements	64	Studying abroad	28
Equal opportunities	180	THINK series	30
Essex Business School	14, 22, 72, 88, 134	Tuition fees (see Fees and funding)	
Essex – local area	56, 178	UCAS	63
Essex Pathways	168	University Centre Colchester	177
Facilities	22, 24-25	University of Essex International College	177
Fees and funding	66	University of Essex Online	176
Health centre	44	Visas	64
International Baccalaureate	64	Visiting the University	60, 178
International foundation programmes (see University of Essex International College)		Worship facilities	34
International students	18, 36	Year 0 (see Essex Pathways)	
Language learning	28		

Designed by Print Essex and printed by Belmont Press using processless plate technology, on isopropyl alcohol free presses, significantly reducing the environmental impact of the printing process. All production processes are ISO14001 certified, and are independently audited by the British Standards Institute on a bi-annual basis. All waste streams are regularly benchmarked against the requirements of the waste hierarchy in order that undesired outputs are prevented, minimised, re-used, or ultimately recycled. Printed on 100% recycled paper.

ISBN 978-1-909562-17-2

© University of Essex 2018

CREDIT WHERE CREDIT'S DUE

We would like to thank all the students and alumni who agreed to be interviewed and supplied testimonials.

We would particularly like to thank all the student contributors, photographers and Instagrammers who kindly granted us permission to use their content.

[@ajrwpphotographer](#)
[@alierdenay](#)
[@amybreadmore](#)
[@angel4tonight](#)
[@antxnia](#)
[@carlacamilleri](#)
[@dandy_does](#)
[@daniemacinsta](#)
[@daydreamer_sagnik](#)
[@Diego Cisneros](#)
[@dom_bash](#)
[@Lauren Dorling](#)
[@eezzz](#)
[@Emily Evans](#)
[@emilysolman](#)
[@esztiicz](#)
[@guudpt](#)
[@hozieqi](#)
[@ieva_red](#)
[@j0liexx](#)
[@lucavegac](#)
[@lucyshears](#)
[@Ellie Matthews](#)
[@Alex Maxam](#)
[@michael_ts_](#)

[@mrsranson](#)
[@nannanssss](#)
[@nattaugust](#)
[@niesimin](#)
[Ernest Nyarko](#)
[James Perry](#)
[@pretty-preye](#)
[@rayssinha143](#)
[@ronjaela](#)
[@saffyyyy](#)
[@scuzelove](#)
[@siobhan_ralfe](#)
[@tomachg](#)
[@vale_azara](#)
[Will Whitehead](#)
[@yeungtai](#)

Additional photography by Paul Tait.

If you would like more information, or have questions about any aspect of applying to Essex, please contact

T +44 (0)1206 873666

E admit@essex.ac.uk

Campus contact details

University of Essex
Colchester Campus
Wivenhoe Park
Colchester CO4 3SQ
United Kingdom

T +44 (0)1206 873333

University of Essex
Southend Campus
Elmer Approach
Southend-on-Sea SS11LW
United Kingdom

T +44 (0)1702 328200

University of Essex
Loughton Campus
Rectory Lane
Loughton IG10 3RY
United Kingdom

T +44 (0)20 8508 5983

 **/uniofessex**

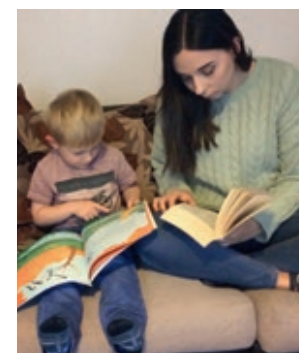
 **/Uni_of_Essex**

 **/uniessex**

 **/uniessex**

 **/uniofessex**

 **uniofessex**



WE ARE ESSEX. WE'RE ON THE SIDE OF **PEOPLE WITH GUTS** – REBELS WITH A CAUSE. WE'RE ABOUT PEOPLE WHO **LOVE TO LEARN HOW**, BUT **WANT TO CHALLENGE WHY**. BUT WHY DO WE HAVE TO STOP HERE? WHY CAN'T WE TAKE IT FURTHER, TO THE BIT WHERE IT REALLY GETS INTERESTING? WE'RE ABOUT THE PEOPLE WHO HUDDLE OUTSIDE A CLASS LONG AFTER IT'S FINISHED BECAUSE THERE'S MUCH **MORE TO BE SAID**, MORE ARGUMENTS TO BE HAD. WE'RE ABOUT PEOPLE WHO ARE BOLD ENOUGH TO **CHALLENGE INEQUALITY** AND THE STATUS QUO. PEOPLE WHO DON'T EXPECT THE WORLD TO CHANGE SIMPLY BECAUSE THEY LIKED A FACEBOOK STATUS OR NODDED WHEN SOMEONE ELSE SPOKE. AT ESSEX YOU'RE NOT JUST A STUDENT, **YOU'RE A MEMBER**, SOMEONE WITH GENUINE LICENCE TO SHAPE WHAT GOES ON AROUND YOU. TO US IT DOESN'T MATTER WHERE YOU'VE COME FROM. WE'RE INTERESTED IN HOW YOU WANT TO GROW AND **WHAT YOU WANT TO CHANGE**. WE'RE AFTER PEOPLE WHO WILL HELP US PUSH THE FRONTIERS OF KNOWLEDGE. **CHALLENGING CONVENTION** IS IN OUR DNA. ALL OF WHICH LEAVES YOU WITH A DECISION: ARE YOU GOING TO SIT AND WATCH THE WORLD GO BY? OR DO YOU HAVE THE **COURAGE AND ENERGY** TO SHAPE IT? WE'LL HELP YOU EXPLORE, QUESTION AND CREATE **POWERFUL IDEAS**. WE'LL INTRODUCE YOU TO PEOPLE FROM EVERY CORNER OF THE PLANET, A **GENUINELY GLOBAL COMMUNITY** THAT LIVES, WORKS AND PLAYS TOGETHER. IF YOU GIVE UP AT THE FIRST HURDLE, ESSEX ISN'T FOR YOU. IF YOU WANT TO BE SPOON-FED A DEGREE, ESSEX ISN'T FOR YOU. IF YOU ARE BRAVE ENOUGH TO HAVE IDEAS AND GENEROUS ENOUGH TO SHARE THEM, **WELCOME HOME**.

essex.ac.uk



Cover image by Andrew Watkinson, @ajrwphotographer. Essex student.