

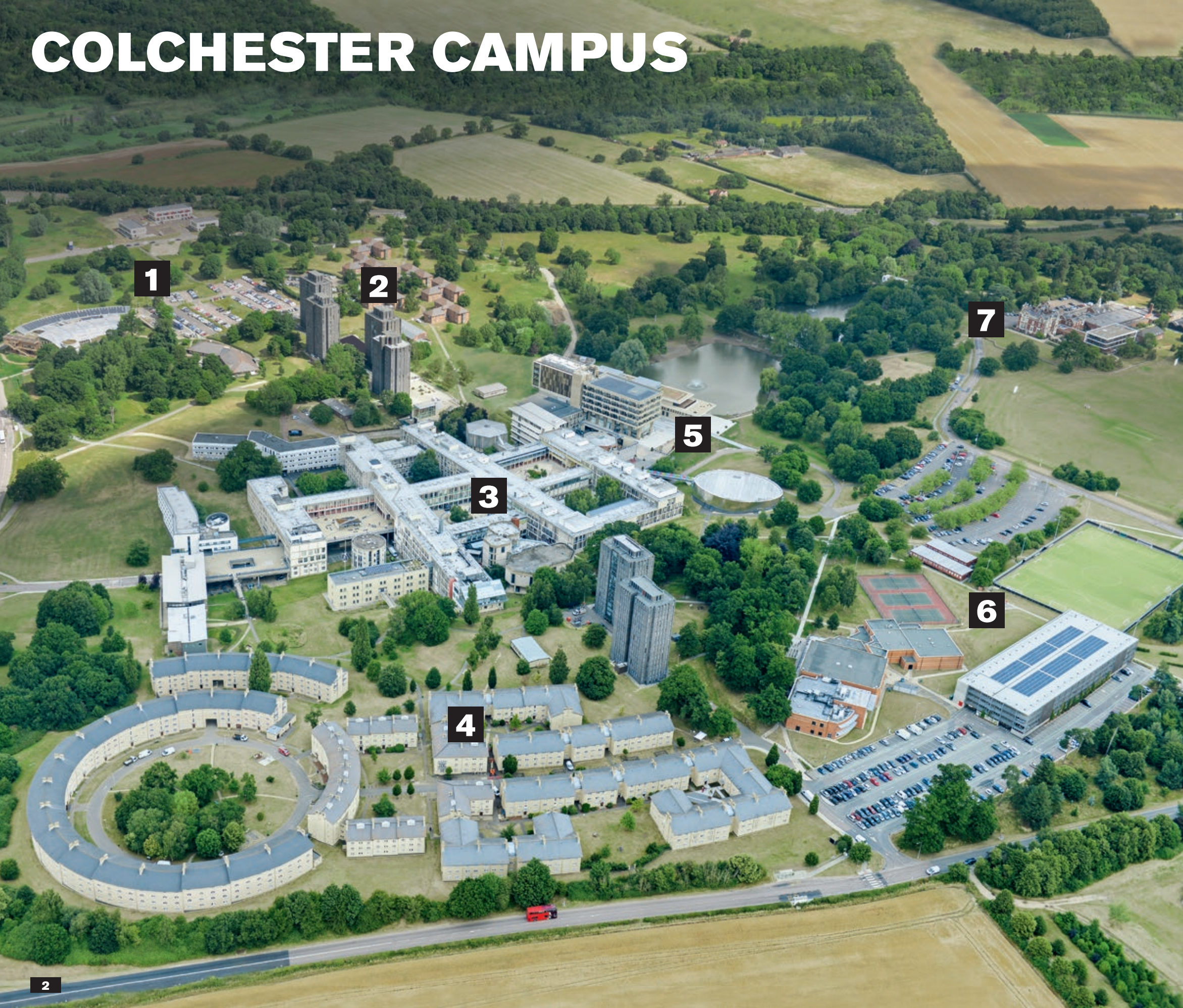


University of Essex

WELCOME HOME

International Prospectus 2018

COLCHESTER CAMPUS



- 1** North-west campus
- University Quays accommodation (10 minute walk)
 - The Meadows accommodation (5 minute walk)
 - Essex Business School
 - Knowledge Gateway
 - Wivenhoe Park Day Nursery

- 2** North campus
- North Towers accommodation
 - The Houses accommodation
 - Health Centre
 - Tony Rich Teaching Centre
 - North Teaching Centre

- 3** Central campus
- Lecture Theatre Building
 - Academic departments
 - Lecture and seminar rooms
 - Students' Union
 - Bars, cafés and restaurants
 - Shops, banks and Post Office
 - Information Centre

- 4** South campus
- South Towers accommodation
 - South Courts accommodation

- 5** East campus
- Ivor Crewe Lecture Hall
 - Silberrad Student Centre
 - Albert Sloman Library
 - Lakeside Theatre and Café
 - Art Exchange
 - Waterstones bookshop
 - Parkland and lakes

- 6** South-east campus
- Tennis courts
 - Synthetic turf pitch
 - Sports Centre
 - Evolve Gym

- 7** Wivenhoe Park
- Wivenhoe House restaurant and hotel
 - Edge Hotel School
 - Campus farm
 - Sports pitches and parkland

TRAVELLING TO OUR UNIVERSITY



Colchester to:

- **Central London: 60 miles (97km)**
Approximately 50-60 minutes by train, 100 minutes by car
- **Heathrow Airport: 95 miles (153km)**
Approximately 90-100 minutes by train, 90 minutes by car
- **Gatwick Airport: 85 miles (137km)**
Approximately 90-100 minutes by train, 90 minutes by car
- **Stansted Airport: 33 miles (53km)**
Approximately 75 minutes by bus, 50 minutes by car
- **Southend Airport: 41 miles (66km)**
Approximately 75 minutes by train, 60 minutes by car

Southend to:

- **Central London: 40 miles (64km)**
Approximately 50-60 minutes by train, 80 minutes by car
- **Heathrow Airport: 76 miles (122km)**
Approximately 120 minutes by train, 80 minutes by car
- **Gatwick Airport: 62 miles (100km)**
Approximately 120 minutes by train, 70 minutes by car
- **Stansted Airport: 40 miles (64km)**
Approximately 90 minutes by bus, 60 minutes by car
- **Southend Airport: 3 miles (5km)**
Approximately 15 minutes by bus, 10 minutes by car

Distance from Colchester:

- **Birmingham:** 155 miles (248 km)
- **Cambridge:** 47 miles (75km)
- **Edinburgh:** 407 miles (656km)
- **Manchester:** 213 miles (340km)
- **Norwich:** 58 miles (95km)
- **Southend:** 45 miles (72km)

For detailed directions to our Colchester or Southend campuses, visit our website.
► www.essex.ac.uk/int18/visiting

Our campuses

COLCHESTER

SOUTHEND

LOUGHTON



Contents

Why study at Essex?	6
Welcome to Colchester	8
Colchester photo tour	10
Welcome to Southend	12
Southend photo tour	14
Accommodation	16
Fees and scholarships	18
English language and pathways	20
Student support	22
Students' Union	24
Careers and employability	26
Alumni map	28
How to apply	30

Subjects

Accounting, banking and finance	32	Linguistics	54
Acting (East 15)	34	Literature, film, and theatre studies	56
Biological sciences	36	Marketing	58
Business and management	38	Mathematics	60
Computational finance	40	Modern languages	62
Computer science and electronic engineering	42	Philosophy and art history	64
Economics	44	Politics and international relations	66
Health and social care	46	Psychosocial and psychoanalytic studies	68
History	48	Psychology	70
Law and human rights	50	Sociology and criminology	72
Liberal arts and area studies	52	Sports, rehabilitation and exercise sciences	74

WHY STUDY AT ESSEX?

FIND OUT IF STUDYING AT ESSEX IS RIGHT FOR YOU.

Students love it here: We've been ranked in the top 10 for student satisfaction among mainstream UK universities for four years in a row (NSS 2013-16).

A successful future: 95% of our international graduates are in graduate-level jobs or further study within just six months of graduation (DLHE Survey 2015).

International community: With students from over 140 nationalities, Essex is the world in one place. We're among the top 20 most international universities in the world (THE 2017).

Location: Close to London, low living costs, English history, beautiful countryside and beaches, safe and connected to Europe. Essex offers all this and more.

Regional support: we have offices located in Africa, China, India, Middle East and South East Asia, where our staff can provide support with your application. You can find their contact details at the back of this prospectus.

Flexibility and choice: Build the degree that suits you with a wide variety of elective courses, joint honours degrees, study abroad options and placement years in industry.

Global careers: Our internationally relevant curriculum, international staff, professional accreditations, and language and study abroad options mean our graduates are prepared for careers in global organisations.

Lifestyle: Exciting campus nightlife, an active and supportive Students' Union and more than 40 competitive sports clubs. London is nearby and the low-cost airports at Stansted and Southend mean Europe is easy to reach.

Accommodation: Our on-campus accommodation is guaranteed for international students, and offers variety, safety and high quality with affordable costs.

Essex is a truly international institution with a long history of welcoming students from around the world. With a global outlook and reputation for research and teaching, we're one of the UK's most internationally diverse campus universities with students from more than 140 countries.

We are Essex

We are an international community for original thinkers who believe in challenging convention and seek to change the world for the better. An Essex degree is about choice, relevance and developing you as a person. With us, you're not just a student, you're a member.

Essex introduces you to people from every corner of the planet to create networks that last for life. We are a genuinely global community that lives, works and plays together. You'll have the opportunity to study an internationally relevant curriculum, are encouraged to live and study abroad, and are taught or supervised by academics whose research has global impact. We give you the best chance to compete in a global economy.

At Essex you can expect to develop professional skills alongside critical and analytical thinking skills, independence and intercultural communication. We also help you develop a research mindset through research-led teaching from some of the world's top academics. These are real skills that employers want and which you can transfer across industries.



GUIDE	YEAR	RANKING	LOCATION
Research Excellence Framework (REF)	2014	19	UK
The Times and The Sunday Times Good University Guide	2016	30	UK
National Student Survey	2013-6	Top 10	UK
Times Higher Education World University Rankings - International Outlook	2017	18	World

The University of Essex has been awarded the highest rating of GOLD in the Teaching Excellence Framework (TEF)



WELCOME TO COLCHESTER



WHY ESSEX?



Our modern Silberrad Student Centre is a hub for all your services and support needs



Great transport links to London, rest of the UK and beyond



Colchester combines Roman history and modern entertainment



Wide variety of sports, arts and entertainment both on campus and in the local area

A dynamic academic environment set just outside the oldest recorded town in Britain, our Colchester Campus offers extensive facilities and support services to ensure you achieve the most from your studies.

Sport

We offer opportunities for all abilities and levels to participate in sport right on campus. Our Evolve gym has 130 fitness stations, and we also have a variety of both indoor and outdoor pitches and courts, an indoor sports hall, squash courts and a climbing wall. The Students' Union Essex Blades have over 40 teams, offering you the chance to join an active community and compete in both local and national fixtures. Colchester itself offers everything from bowling and roller discos to swimming pools, an indoor trampoline park and even a laser tag centre.

Arts

Colchester Campus has its very own art gallery, Art Exchange, and our Lakeside Theatre hosts international artists as well as student productions for an exciting mix of theatre, dance and music. Colchester is home to the Firstsite visual arts centre and the smaller Minorities gallery. For live music and comedy there's Colchester Arts Centre, and the Mercury Theatre next door offers student prices for everything from Shakespeare to modern musicals.

Shopping, food and nightlife

Colchester's Culver Square and Lion Walk are home to a fantastic range of familiar shops and high-street fashion. What makes our town really distinctive however are all of the specialist and unique shops on offer. Stroll down Sir Isaac's Walk or Eld Lane, two of the quirkiest streets in the town centre, and you'll find a mixture of retro clothing boutiques, old-school sweet shops, furniture shops, jewellers, and independent health food stores. You can also find everything from American candy to Korean noodles and Russian delicacies in and around the town centre. There's a huge range of restaurants with student-friendly prices offering local and international cuisines. Colchester also has a great selection of bars, pubs, nightclubs and live music venues to cater for all tastes. On campus you'll find a range of restaurants and food outlets, including a wide range of halal, vegan and vegetarian options.

Travel

Colchester has great travel connections for both the UK and abroad. We're an hour away from London Stansted Airport which offers low-cost flights to many European destinations, and London's other airports are also easily accessible by public transport. Travelling in the UK is easy with London and its connections only an hour away by train.

Things to see and do

- The Colchester Castle museum is a great introduction to the town's Roman history
- Colchester Zoo is home to over 270 species of animals and offers a great day out close to the town centre
- Mersea Island under an hour from campus offers some of the tastiest seafood around, including the famous Mersea oysters



Colchester Castle

Take a walk, have a picnic, or just take photos in Colchester's award-winning Castle Park. The Castle is the largest surviving Norman keep in Europe.



Fresh flavour

Every Thursday we host a bustling street market on the campus squares, with fresh fruit and vegetables, bread and cakes, varying international cuisines and even fresh oysters on offer.



WE ARE COLCHESTER

Diverse and cosmopolitan with a population of around 180,000 people, Colchester is a great student town, offering a rich mix of bars, restaurants, theatres and music venues. Our main campus is located just outside of Colchester town and offers extensive facilities and support services to ensure you achieve the most from your studies.

► www.essex.ac.uk/int18/colchester360



Go Blades!

Participate in one of our 40+ sports clubs or just cheer on your team. As well as providing opportunities for high-performing athletes, we offer everything from relaxed, fun sessions to competitive fixtures.



Retail therapy

Go shopping in Colchester and browse international brands and distinct local retailers. The town centre periodically hosts special student shopping events with great discounts and special offers.

Green space

Relax, study or play a game of frisbee-golf by the lakes on campus. There is also a barbecue area you can book to use for social gatherings.



Catch a show

Our Lakeside Theatre hosts performances by our very own drama students as well as national and international acts. You can also get involved through the regular open-mic nights, show auditions and creative workshops.



Furry friend

Meet Campus Cat – he's become a bit of a mascot and will always give you a friendly smile. Find him patrolling the campus or posting on social media - he's got over 6,000 followers!



Town attractions

Visit Colchester's historic Town Hall, look for Roman ruins around the town centre or visit Colchester Zoo - one of the best in Europe and Top 2 in the UK.



Student Services Hub

Enjoy student services and brand new facilities in the Silberrad Student Centre. Here you'll find our SU Creative Studios, interactive group learning spaces and friendly advice from our Student Information Team.



Room with a view

Indulge in traditional British afternoon tea in our beautiful Wivenhoe House Hotel situated in the parkland on our campus. Wivenhoe House was painted by famous artist John Constable back in 1816.



WELCOME TO SOUTHEND



WHY ESSEX?



The Forum building provides extensive library facilities and innovative learning spaces



Try out water sports including windsurfing or jet skiing



Enjoy the English seaside, including the world's longest pier



Just 50 minutes from London, Southend provides easy access to the capital and beyond

Located in the heart of Southend-on-Sea, our newest campus offers specialist resources and state-of-the-art facilities in a vibrant and exciting seaside town. Enjoy a rich cultural and educational experience, where leisure is only ever a few minutes away.

Our campus

Our Southend Campus offers contemporary learning and teaching spaces. Our latest addition to campus - the Forum building - offers a spacious ultramodern learning environment, with an in-house library, gallery and café. The Gateway Building houses a doctor's practice, a dental practice and our multi-faith chaplaincy, while Clifftown Theatre and Studios, a converted church, provides an inspiring setting for our East 15 students housing specialist rehearsal studios and a 200-seat theatre.

Students' Union (SU)

Our SU has plans to become the world's most student-centred organisation, shaping their services around you. The SU organises and facilitates an array of activities and sports in Southend, from yoga lessons to nights out in town. The SU has two bespoke spaces on our Southend Campus, including a social venue that is run by students. This is your home-from-home for studying, having a cup of coffee or a snack, playing video games or just socialising with friends between classes.

Location

Southend-on-Sea's location means there's plenty to see and do. Sail or cycle along the coast and stroll to the end of the pier. Well-known attractions abound, from Adventure Island and amusement arcades to the famous Rossi ice-cream parlour.

The town holds the Purple Flag: the gold standard for a fun and safe night out. Southend is also a great gateway: London is just 50 minutes away by train, while London Southend Airport is only three miles from campus, offering budget flights to a range of European destinations.

Sports, arts and leisure

If you like to be active you can take advantage of the sports on offer through our Students' Union Just Play programme. If you prefer spectating to participating, there is a thriving live music and arts scene, with two theatres, numerous art galleries, and festivals throughout the year. If food is your thing, you are spoilt for choice with over 300 places to dine in the town, from independent Portuguese and Thai restaurants to popular franchise outlets.



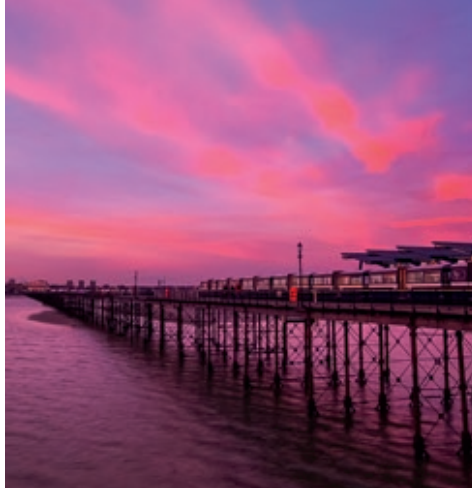
“ Southend is really good for shopping. There's lots of variety, with the shops on the High Street, shopping centres, and markets, selling everything from handmade chocolates and bread, to fresh fish and meat. If you're a fan of windsurfing, powerboating, jet skiing or canoeing, try the Marine Activities Centre. ”

Beatriz Alarcon Zlatkis and Zsolt Gergely

► www.essex.ac.uk/int18/southend

Seaside charm

Our beautiful seafront encompasses seven miles of award-winning beaches, a lively hub for watersports and the longest pier in the world.



Home comforts

Let your room reflect your style. The spacious rooms in University Square come with en-suite facilities and easy access to the town centre and university buildings.



WE ARE SOUTHEND

Historically a British holiday destination, Southend has evolved into a thriving cultural centre of music, theatre, comedy and cuisine – whilst retaining all the charms you'd expect from a traditional English seaside town.

► www.essex.ac.uk/int18/southend360



Campus accommodation

Make our striking University Square accommodation a home-from-home. There's a supermarket right next door for all your grocery needs and several restaurants right at your doorstep.



Game on

Enjoy award-winning nightlife, including the historic Kursaal amusement arcade. Southend has been awarded a purple flag award which means that the town provides an "entertaining, diverse, safe and enjoyable night out."

Splendid shopping

Do some shopping in the High Street stores just minutes from our campus buildings. Many of the shops offer student discounts so go bag a bargain!



Thrilling attractions

Get your head in a spin at Adventure Island amusement park's rides, try your hand at mini-golf or visit the aquarium for a fun day out.



Put on a show

Our Clifftown Theatre and Studios provides rehearsal space for our East 15 Acting School students within a renovated gothic-style church, and hosts regular public performances for everyone's enjoyment.



New facilities

Study in our impressive Forum building, which also houses a library, an art gallery and a restaurant.



Life's a beach

Wrap up warm for a walk on the beach in the winter. The beach is alive with year-round events, pubs and restaurants with great seaside views.



Lounge away

You'll be able to catch up with friends in our social venue, the SU Lounge. Study, grab a coffee or a snack, play Xbox or Playstation and just chill out between lectures.

ACCOMMODATION



Wherever you are in the world, it's important you have somewhere to call home. Our award-winning accommodation is guaranteed to all international students for their first year of studies, so you can relax and start enjoying your Essex experience.

WHY ESSEX?



Guaranteed accommodation for the first year of your studies (providing your accommodation application is received by the published deadlines)



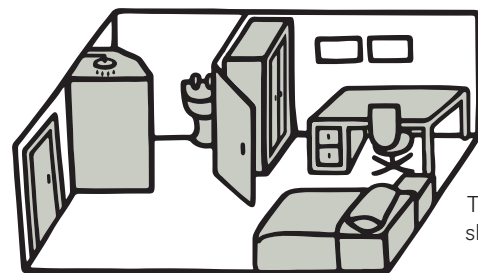
Limited number of single-gender flats available



Limited couples' accommodation available on campus

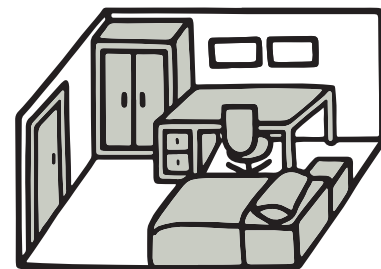


Applicants for East 15 Loughton courses should contact East 15 for further information about accommodation



En suite bedroom

The illustrations show the typical layout of our bedrooms.



Standard bedroom

It's likely that our rental charges for 2018-19 will increase from these current prices. We'll publish the new prices on our website as soon as they are available.

The Towers (Colchester)

- Walking distance to central campus – three minutes
- Students in each flat – 13 to 16
- Shared bathrooms
- Cost per week: £79.24-£90.86



The Houses (Colchester)

- Walking distance to central campus – five minutes
- Students in each flat – four to six
- En-suite bathrooms
- Undergraduate only
- Cost per week: £126.35-£128.17



South Courts (Colchester)

- Walking distance to central campus – three minutes
- Students in each flat – four to six
- En-suite bathrooms
- Undergraduate only
- Cost per week: £139.51



University Quays (Colchester)

- Walking distance to central campus – 15 minutes
- Students in each flat – eight
- En-suite bathrooms
- Cost per week: £128.17-£140.14



The Meadows (Colchester)

- Walking distance to central campus – ten minutes
- Students in each flat – up to ten
- En-suite bathrooms
- Cost per week: £135.80-£143.36



University Square (Southend)

- Walking distance to The Gateway Building – three minutes
- Students in each flat – eight to ten
- En-suite bathrooms
- Cost per week: £139.30-£171.85



FEES AND SCHOLARSHIPS



When you come to study with us, we understand that you are making a significant investment of time and money, so we want to make sure it pays off. Whether it’s through our world-class facilities or our award-winning accommodation, your time at Essex is guaranteed to leave you with memories that no one can put a price on.

Our fees (per annum)

UNDERGRADUATE FEES	
Bachelors degrees	£14,020
Bachelors degrees – laboratory based (biological sciences and psychology)	£16,170
Living and accommodation costs (per year, approximately)	£7,600 - 12,900
POSTGRADUATE FEES	
Band B: Masters in biological sciences, history, language and linguistics, psychosocial and psychoanalytic studies, health and social care, law, literature, film, and theatre studies, philosophy and art history, mathematics, computer science and electronic engineering, computational finance, psychology, sports, rehabilitation and exercise sciences	£16,225
Band C: Masters in economics, Essex Business School, politics, sociology	£16,750
Band D: The Essex MBA	£19,000
East 15	£13,800-15,175
Research degrees	£14,020
Research degrees - biological sciences and psychology	£16,225
Living and accommodation costs (per year, approximately)	£10,000-15,000

Student visa requirements

As part of the visa application process, you'll be asked to produce evidence of your ability to pay tuition fees and to cover living expenses during the course. Refer to our webpage for information about the current Home Office requirements.
► www.essex.ac.uk/int18/immigration

Our scholarships

We offer a generous range of university and departmental scholarships of varying amounts. To see what support is available this year or check details of individual scholarships, visit our website.
► www.essex.ac.uk/int18/scholarships

University of Essex scholarships

AWARD	AMOUNT	ELIGIBILITY	WEBSITE
Vice-Chancellor's International Scholarships	Varying amounts	Please see website for details	www.essex.ac.uk/int18/vc
International Baccalaureate Excellence Scholarship	£2,000	Students achieving 34 points or more in the International Baccalaureate	www.essex.ac.uk/int18/ib
Academic Excellence International Masters Scholarships	Varying amounts	Please see website for details	www.essex.ac.uk/int18/academic
University of Essex Doctoral Scholarships	Varies by department and scheme	Please visit the website for full criteria	www.essex.ac.uk/int18/doctoral
Essex MBA scholarships	Up to £5,000	Self-funding students with relevant background	www.essex.ac.uk/int18/MBA
Loyalty discounts	Up to 33% of tuition fees	Graduates from Essex Bachelors, Masters and Graduate Diploma courses and former study abroad students	www.essex.ac.uk/int18/loyalty

External scholarships for international students

AWARD	CRITERIA IN BRIEF	WEBSITE
Chevening Scholarships	Applicants from specified countries with an outstanding academic background	www.chevening.org
Commonwealth Scholarships - Developing Countries	Postgraduate Research applicants from specified countries	cscuk.dfid.gov.uk/apply/scholarships-developing-cw
China Scholarship Council Award	Open to Chinese nationals who hold an offer for PhD study	www.essex.ac.uk/int18/china
Santander Scholarships	Open to students from specified 'Santander countries'	www.essex.ac.uk/int18/santander
Civil Society Leadership Awards	Taught Masters applicants in specific fields from specified countries	www.opensocietyfoundations.org/grants/civil-society-leadership-award-20160708
Said Foundation Scholarships	Postgraduate applicants from specified countries	www.saidfoundation.org

► www.essex.ac.uk/int18/finance

ENGLISH LANGUAGE AND PATHWAY PROGRAMMES



We offer a range of pathway programmes which can lead into our degrees at both undergraduate and postgraduate level. For further information please visit our website.
► www.essex.ac.uk/int18/pathways

IELTS PRE-SESSIONAL ENTRY LEVELS						
COURSE REQUIREMENT	CURRENT OVERALL	CURRENT WRITING	CURRENT OTHER	PRE-SESSIONAL COURSE LENGTH	PRICES FOR 2018	START DATES
IELTS 6.0 overall	5.5	5.0	5.0	5 week PEL	£1,750	15 August 2018
				10 week PALSS	£3,250	12 July 2018
IELTS 6.0 overall	5.0	5.0	5.0	10 week PEL/subject specific	£3,500	12 July 2018
				15 week PALSS	£4,875	24 May 2018
IELTS 6.5 overall	6.0	5.0	5.0	5 week PEL	£1,750	15 August 2018
				10 week PALSS	£3,250	12 July 2018
IELTS 6.5 overall	5.5	5.0	5.0	10 week PEL	£3,500	12 July 2018
				15 week PALSS	£4,875	24 May 2018
IELTS 6.5 (writing 6.0)	6.0	5.5	5.0	5 week PEL	£1,750	15 August 2018
				10 week PALSS	£3,250	12 July 2018
IELTS 6.5 (writing 6.0)	5.5	5.0	5.0	10 week PEL	£3,500	12 July 2018
				15 week PALSS	£4,875	24 May 2018
IELTS 7.0 overall	6.5	5.5	5.0	5 week PEL	£1,750	15 August 2018
				10 week PALSS	£3,250	12 July 2018
IELTS 7.0 overall	6.0	5.5	5.0	10 week PEL	£3,500	12 July 2018
				15 week PALSS	£4,875	24 May 2018

Please note: If you have an offer for MSc Management, MSc Marketing Management, MSc Marketing and Brand Management or MSc Human Resource Management, you will be required to take PALSS. All other Essex Business School courses accept PEL or subject-specific. The Department of Sociology and postgraduate programmes in the Department of Language and Linguistics only accept PALSS.

Pre-sessional English pathways

Our pre-sessional English language pathways offer you the chance to improve your English and meet any English language conditions on your offer letter without having to retake IELTS. At Essex, we have several types of pre-sessional programmes for you.

Pre-sessional Academic, Language and Study Skills

Our Pre-sessional Academic, Language, and Study Skills (PALSS) programme provides you with integrated preparation in academic English and study skills. PALSS runs for 15 and 10 weeks.

Pre-sessional English Language

Our Pre-sessional English Language (PEL) programme focuses on enhancing your English language skills. You will be taught further grammar and vocabulary development, as well as additional reading, writing, listening and speaking skills. PEL runs for 10 and 5 weeks.

Subject-specific pre-sessional English language programme

We offer a subject-specific pre-sessional programme for students entering Essex Business School. Our programme offers a unique opportunity to develop your English skills with subject-specific materials related to your chosen course of study, including textbook extracts, journal articles, model reports and literature reviews. Our subject-specific pre-sessional programme runs for 10 weeks.

Which pre-sessional pathway do I need?

Having so many pre-sessional options is great, but how do you pick the best one for you? Our table above is a good indication of which options are available based on your current IELTS and our English language requirements. Use our pre-sessional finder tool to help decide which options are best for you.

► www.essex.ac.uk/int18/ps

Additionally, if you are an international student and you need a visa to study one of our pre-sessional programmes, you must have a Secure English Language Test (SELT) to meet the Home Office requirements, please visit our website for further details.

► www.essex.ac.uk/int18/immigration

If you have an unconditional offer to study at Essex and would like additional preparation in English for academic purposes and study skills before starting your course with us, our four-week Essex Academic Skills Programme (EASP) is for you. EASP is an excellent way to settle in to life in the UK and become more confident. In this case you can get one single visa to cover both EASP and your degree. The EASP start date is 28 August 2018.

► www.essex.ac.uk/int18/ps

STUDENT SUPPORT



WHY ESSEX?



All undergraduate and taught postgraduate students are allocated a personal tutor



Receive advice, information and support on a range of health and wellbeing issues



We offer advice and guidance on a range of disability support services



The Talent Development Centre offers support and resources to improve your English, writing, maths, research and study skills

Make the most of your life at Essex with our award-winning student support services. Benefit from academic skills support, mentoring and general guidance. Find space for worship, meditation, prayer and quiet reflection or just have a friendly chat.

Welfare and support

As an international community we understand the needs and concerns of international students, and do our best to provide you with excellent support facilities. This led to us being named winner of the *Times Higher Education* (THE) Award for Outstanding Support for Students in 2013.

Our support and welfare services include healthcare, immigration advice, support with your faith and assistance with improving your academic skills, as well as places you can go if you just need to talk to someone.

Support and guidance

Student Services Hubs

Our Student Services Hubs can help with general wellbeing and funding advice. We also have facilities and advice available for students with disabilities and those battling with exam anxiety.

► www.essex.ac.uk/int18/support

Immigration

UK immigration advice is regulated, so can only be provided by our authorised advisers.

Please visit www.essex.ac.uk/int18/immigration for further information and the 'ask us a question' section if you have a query.

Support with your studies

You may find studying at a UK university very different to your home country, and it may be the first time you'll be studying in English. We aim to ensure that you can get the most out of your education by providing a range of academic and English language support classes.

Talent Development Centre

Our Talent Development Centre can help with your academic English language skills. They can also help with study techniques and exam preparation.

► www.essex.ac.uk/int18/talent

Health and wellbeing

Health services

There is a health centre on our Colchester Campus which offers appointments with male and female doctors, as well as specialist services and counselling. Our Southend Campus has dental and GP training practices, supported by the local Primary Care Trust, on site. It is important to register with the health centre as soon as you can so that you can receive treatment when you need it.

► www.essex.ac.uk/int18/health

Nightline

Nightline is an award-winning, student-volunteer-run advice and support service, which is available overnight throughout term-time. The volunteers are able to provide a listening ear and impartial advice, or a cup of tea and a friendly talk if you're just feeling homesick.

► www.essex.ac.uk/int18/nightline

Residence Life

The Residence Life team offers support within your on-campus accommodation by providing out-of-hours support, making sure you get along with your flatmates, and organising fun events to help you meet other students in your accommodation building.

► www.essex.ac.uk/int18/reslife

Religious life

Our Multi-Faith Chaplaincy is for all members of the University community – of all faiths and none. We offer on-campus pastoral care, a confidential listening ear and spiritual support. We also offer a safe place to practise or explore faith, either in the Chaplaincy or by connecting you to a local place of worship.

► www.essex.ac.uk/int18/faith

Mentoring

Our academic departments also provide their own support services, with most departments running student mentoring schemes, and our lecturers and professors offering office hours for one-to-one guidance with your studies.

► www.essex.ac.uk/int18/mentor

Students with families

It is important that you're aware of the additional costs and implications of bringing your family with you to the UK.

Please visit www.essex.ac.uk/int18/families for further information for students with dependants. If your family will need dependants visas we recommend you check the Home Office criteria to see if they would be eligible to apply.

► www.essex.ac.uk/int18/support

OUR STUDENTS' UNION

WE WANT
TO BE THE
WORLD'S
MOST
STUDENT-
CENTRED
ORGANISATION

Hello wonderful person. We're the Students' Union. We're made of 14,000 members. When you come to Essex, you're not just a member of an SU, you're part of an unconventional family. A family that has people from every background, belief and interest imaginable. A family that's always got your back. Because we believe that together we can do amazing things, to be whoever or do whatever.

What do we do?

We're making four promises to you and we won't rest until we've made them happen.

1. We promise to help you get an amazing degree and job

The two most important things to you are the two most important things to us. We're here to inspire and motivate you, to cheer you on as you walk into exams and to help you beat the competition in interviews and land your dream job.

2. We promise to give you an amazing membership

We will give you a Students' Union experience that's good enough to make all your friends who aren't at Essex jealous. We've given students the tools to set up over 100 societies. And if you're into sport – we run more than 40 sports teams.

3. We promise to shape everything around you

You choose what drinks we serve in our bar and what products we stock in our shops, just write it on the wall and we'll do our absolute best to get it in stock for you ASAP. All you need to do is Tweet or Facebook us, and we'll get on it.

4. We promise to benefit all students

At Essex the Students' Union is here for everyone, no matter your age, gender, nationality, faith, sexuality, year of study, or shoe size. In our family there's no pretentious cordoned-off VIP area, we're open to everyone.

10 reasons why the SU is one of the best things about Essex

- 1** Sports clubs – over 40 teams and all free to join
- 2** VTeam – volunteering opportunities for everyone!
- 3** SU Advice – from legal advice to help with visas, we provide advice on anything and everything
- 4** The Store – a mini supermarket on campus
- 5** The Salon – from haircuts and colours to manicures and pedicures, the Salon offers it all!
- 6** Frango's – a Portuguese restaurant and bar serving your chicken needs
- 7** SU Heirloom – every student at Essex gets their own customisable handmade charm to pass down
- 8** Cine10 – your very own cinema on campus, showing blockbusters on huge screen with surround sound
- 9** SU Lets – a free house-finding service right on campus
- 10** SU Market – held every Thursday on campus, selling food, fruit and veg, vintage clothing and more

This is just the start...

We could go on and on, but hopefully we've given you a good idea of how we help you have a great time at Essex.

“ Welcome to Essex, your home away from home! I'm Yasmin, and I've been elected by Essex students to represent international students. While university may seem daunting at first, just remember to be proud of where you came from and have faith in how far you'll go. We, the Students' Union, will be there every step of the way of your Essex Adventure to provide support, guidance and a cheery smile. At Essex, you won't just get an amazing degree - you'll have a life changing experience you will never forget! I look forward to having an incredible time together! ”

Sharifah Hani Yasmin, Malaysia, Vice President International, Essex Students' Union

► www.essex.su

CAREERS AND EMPLOYABILITY

GRADUATE DESTINATIONS

These are just some of the employers our graduates have gone on to work with.

- Accenture
- Allen & Overy
- Amnesty
- Barclays
- Bloomberg
- BP
- BT Group
- Cancer Research UK
- Credit Suisse
- Deloitte
- Fujitsu
- GlaxoSmithKline
- Goldman Sachs
- Intel
- KPMG
- Microsoft
- Ministry of Foreign Affairs, Qatar
- Morgan Stanley
- Oxfam
- Procter & Gamble
- Rothschild GmbH
- Panasonic
- PricewaterhouseCoopers
- Shell
- The Royal Shakespeare Company
- United Nations

An Essex degree is not just about academics, we also focus on developing you towards your future career. Our focus on your employability has helped 95% of our international graduates to start their careers or further study within six months of graduating. (DLHE survey 2015)

These are just some of the ways we are helping you get on the career ladder:

- **Essex Employability Award** – recognition for any extra-curricular volunteering and work experience
- **Volunteering** through the SU vTeam with hundreds of opportunities available
- **Frontrunners** – our award-winning student internship programme offers over 200 paid placements in graduate-level projects across the university
- **Study abroad opportunities** – most courses offer study abroad at undergraduate level
► www.essex.ac.uk/int18/abroad
- **Learning languages at Essex** – we make language-learning easy. All our students can learn a language to develop new language skills and get an edge when applying for jobs. At Essex, there are four ways to learn
► www.essex.ac.uk/int18/languages
- **Placement years** – spend a year or one term gaining work experience (where available). Your placement can take place in the UK or abroad and can kick-start your future career
► www.essex.ac.uk/int18/placements
- **Part-time work** – degree students with a Tier 4 visa can normally work up to 20 hours per week during term-time. The university recommends working no more than 12 hours per week.
- **Dedicated international careers advisers** and support available during your studies and after you graduate, helping you look for graduate-level work both in the UK and abroad

Alumni activities

Our global alumni network means you will be connected to an existing network of professionals in your home country and abroad, which can be the key to unlocking your future success. Our alumni stay in touch years and even decades after leaving Essex. The alumni office holds networking events for our past students around the world. Recent events include alumni receptions in Mexico, Hong Kong, Malaysia, Japan, Canada and Singapore. You can find out more about our past students and find contact details of alumni from your country through our website.

► www.essex.ac.uk/int18/alumni

Notable alumni

Our 74,000 alumni work in a variety of careers all over the world. These are just a few of the ones who've gone on to have a public profile for their work. In the next pages you can find a map showing more of our international alumni and what they have gone on to do since graduating.

Dr Shirin Sharmin Chaudhury MP (PhD Law, 2000)

Dr Chaudhury made history in 2013 as the first female speaker of Bangladesh's parliament. She has practised law for over 15 years, and won Asia Society's Humanitarian Service Award in 2010 for her work to eliminate violence against women and improving women's employment in Bangladesh.

Dr Oscar Arias Sanchez (PhD Government, 1975)

Oscar Arias has twice been President of Costa Rica, from 1986 to 1990 and again from 2006 to 2010. He received the Nobel Peace Prize in 1987 for his efforts to end the civil wars of several Central American countries. He was awarded an honorary degree by the University in 1988.

David Yates (BA Government, 1987)

David Yates is a BAFTA-award-winning television and film director. He directed the final four instalments in the Harry Potter film series, The Order of the Phoenix, The Half Blood Prince and The Deathly Hallows parts I and II. He was awarded an honorary degree by the University in 2012.

Sir Christopher Pissarides (BA, MA Economics, 1971)

Christopher Pissarides was born in Cyprus in 1948, and graduated from Essex with a First Class Honours degree in Economics in 1970 and gained a Distinction for his Masters the following year. He is now Regius Professor of Economics at LSE. In 2010, he was awarded the Nobel Prize in economics, jointly with Peter A. Diamond and Dale Mortensen, for his contributions to the theory of search frictions and macroeconomics.

► www.essex.ac.uk/int18/careers

OUR GLOBAL ALUMNI

Our alumni network is spread across the world and includes top names in politics, business, arts and science. Find some of our global alumni on this map.



HOW TO APPLY

IMPORTANT INFORMATION

Entry requirements

Entry requirements vary by course and level of study. Entry requirements can be found through www.essex.ac.uk/int18/courses.

Please see subject pages in this prospectus for English language requirements for your course.

Immigration requirements and minimum English language requirements can be found on our website:
► www.essex.ac.uk/int18/immigration.

Immigration and applying for a visa

If you're applying from outside the European Economic Area and require a visa to study in the UK, you'll need to apply under Tier 4 of the UK Government's Points Based Immigration System (PBIS).

We are required to ensure compliance with Home Office regulations as a Tier 4 Sponsor. In some circumstances, we may be unable to make an offer or to issue a CAS if an applicant cannot meet all Tier 4 requirements, including when there have been changes to these requirements made by the Home Office. Refer to our webpage for information about immigration and applying for a visa.

► www.essex.ac.uk/int18/immigration

Once you're ready to apply, these pages give you all the information you'll need.

How you'll learn

Each subject at Essex combines different methods of teaching to ensure you gain in-depth knowledge in addition to developing the transferable skills that are sought by employers. Expect a mixture of lectures, classes, seminars, labs and field trips, depending on your course. To help you in your studies, MP3 recordings are provided of most lectures, and course materials are available online.

You also have the opportunity to attend symposia, conferences, and become a member of relevant student societies and professional bodies. One-to-one mentoring and other forms of peer support also play an important role in how you learn and how we teach at Essex. If you're joining us as a research student you'll work closely with your supervisor and other research students, and will have the opportunity to present your work through journals and conferences both locally and internationally.

For English language programmes

Please visit Essex Pathways for application information.

► www.essex.ac.uk/int18/ps

For undergraduate degrees

Applications for Bachelors degrees should be made through UCAS. Our UCAS code is E70.

► www.ucas.com

If you only want to apply to the University of Essex and do not plan to make a UCAS application, you can apply to us directly through our online application form.

► www.essex.ac.uk/int18/direct

For Masters degrees

We welcome online applications for our Masters degrees.

► www.essex.ac.uk/int18/pgapply

Our online application form takes about 20 minutes to complete and you can save and return to it if you need to. Your supporting documents must include:

- transcripts of your university-level studies to date
- a personal statement making clear why you wish to study in the UK and why you have chosen the subject you are applying for
- any other items which your department requires (CV/work sample)

If you are offered a place on a taught course, your offer may be made conditional upon additional documents such as references, Certificate of English Language proficiency, final transcript and Degree Certificates. Full details, including where to send information, are available online.

► www.essex.ac.uk/int18/pgt

For research degrees

We welcome online applications for our research degrees.

► www.essex.ac.uk/int18/pgapply

You will need to submit a research proposal of around 800-1,000 words, which includes:

- a working title and key words
- a summary of the aims and objectives of your research
- an outline of the ways you will meet these aims and objectives, referring to research methods and specific resources you will use
- evidence of your awareness of relevant literature and theoretical approaches
- an overview of the expected outcomes and the original contribution your research will make to existing bodies of knowledge

You must also provide the following:

- two verifiable references from academic referees
- transcripts of your university-level studies to date
- copies of certificates for any degrees or other awards you have completed
- evidence of your English language level (IELTS score)
- any other items which your department requires (CV/personal statement/work sample)

► www.essex.ac.uk/int18/pgr

Personal statements

Due to Home Office requirements, please ensure your personal statement makes it clear why you wish to study in the UK and why you've chosen the subject you are applying for. You should also tell us about your full academic history including any periods of time spent studying in the UK. If you have spent any time out of education, please also let us know what you were doing during this time.

► www.essex.ac.uk/int18/courses

ACCOUNTING, BANKING AND FINANCE

Essex Business School is the largest department at the University of Essex. We're a growing, ambitious and entrepreneurial community of more than 2,000 students, academics and practitioners from around the world.

English language requirements

- Undergraduate – IELTS 6.0 overall
- Postgraduate – IELTS 6.5 overall

If you don't meet these requirements we offer a range of pre-sessional English courses, please see pages 20-21 for details. Please note that students who need a Tier 4 visa to study in the UK must meet the Home Office Visas and Immigration's minimum English language requirements, including component requirements.

Recent graduate careers

- Accountancy
- Auditing
- Investment banking
- Stockbroking
- Financial and business analysis
- Financial management

Popular modules

Undergraduate

- Corporate Finance
- International Banking
- Management Accounting
- Options and Futures
- Principles of Commercial Law

Postgraduate

- Bank Strategy and Risk
- Derivative Securities
- Financial Decision Making
- Financial Modelling
- Behavioural Finance

COURSES

UNDERGRADUATE

- BSc Accounting **
- BSc Accounting and Finance **
- BSc Accounting and Management **
- BSc Accounting with Economics **
- BSc Banking and Finance **
- BSc Finance **
- BSc Finance with Mandarin
- BSc Financial Management **

POSTGRADUATE - FEE BAND C

- MSc Accounting
- MSc Accounting and Finance
- MSc Accounting and Financial Management
- MRes Accounting
- MSc International Accounting and Banking
- MSc Banking and Finance
- MSc Finance
- MSc Finance and Data Analytics
- MSc Finance and Investment
- MSc Finance and Management
- MSc Financial Engineering and Risk Management
- MSc Finance and Global Trading
- MSc International Finance
- MSD, MPhil, PhD Accounting
- MSD, MPhil, PhD Finance

* This course has an optional year abroad variant
* This course has an optional placement year variant

WHY ESSEX?



Ranked in the UK's top 25 for research excellence (REF 2014)



Our Bloomberg Financial Market Lab gives students hands-on experience of dealing in stocks and securities



Finance at Essex is ranked top 20 in the UK for student satisfaction (NSS 2016)



Up to six ACCA exemptions with selected undergraduate and postgraduate courses

“ Studying at Essex is really a brilliant experience. It gives me opportunity to develop my own ideas and interests, as well as engaging with global thinking. On campus, I can feel the mixture of excitement, enjoying the academic atmosphere and communicating with my friends from all around the world. I can learn advanced knowledge from my teachers and I think it is like a new journey to me. Even though I miss my country, I do not feel lonely. There are facilities and support that we can rely on. I've made use of the Sports Centre, the library, the IT services, and Employability & Careers. They've helped me not only enjoy my time at Essex but also to plan for the future. ”

Yuanjun Tian, China, MSc Finance and Investment

Personal discovery. Intuition. Technical skill. True to our founding principles, we place equal importance on developing these aspects of your craft.

English language requirements

- Undergraduate – Cert HE Theatre Arts - IELTS 5.0 overall.
All other undergraduate courses - IELTS 6.0 overall
- Postgraduate – IELTS 6.0 overall

Please note that students who need a Tier 4 visa to study in the UK must meet the Home Office Visas and Immigration's minimum English language requirements, including component requirements.

Graduate destinations

Our acting graduates pursue careers in theatre, film, TV and radio throughout the world. Our former theatre directing students now direct professionally, function as artistic directors and teach directing across the world.

Popular modules

Undergraduate

- Actor and Text
- Development of Acting Methodology
- Shakespeare and Elizabethan Verse Drama
- Voice, Movement, Music and Singing
- Circus in a Suitcase

Postgraduate

- Contemporary UK Texts
- Shakespeare
- Stanislavskian Acting Methodology
- The Techniques of Adaptation
- Theatre of The East (field study option)

COURSES

UNDERGRADUATE

BA Acting
BA Acting (International)
BA Acting and Contemporary Theatre
BA Acting and Stage Combat
BA Acting and Community Theatre
BA Physical Theatre
BA Stage and Production Management
BA Theatre Making and Producing (subject to approval)
BA World Performance
Cert HE Theatre Arts
International Foundation in Acting

POSTGRADUATE

MA Acting
MA Acting (International)
MFA Acting (International)
MA Theatre Directing
MFA Theatre Directing

WHY ESSEX?



East 15 is a full member of the University/ Resident Theatre Association (URTA) of America



Enjoy purpose-built facilities at Loughton or Southend



We are one of the most international and diverse drama schools in the UK



Expand your horizons through study trips to Bali or Moscow

“ Studying at East 15 on the postgraduate International Acting program gave me the opportunity to perform Shakespeare on the stage of the Globe Theatre, to devise, create, and perform my own work, to work with actors from all over the world, act in a fully produced production at a theatre in central London, and work with tutors who challenge you and encourage the journey of the individual. There simply just are not any other programs that embrace the beauty of international and cross-cultural collaboration; East 15 is ahead of the curve. What East 15 has is rare. ”

Geoff Kanick, USA, MA Acting (International)

BIOLOGICAL SCIENCES

As one of the University’s largest departments, we’re renowned for our high levels of student satisfaction on both undergraduate and postgraduate courses.

English language requirements

- Undergraduate – IELTS 6.0 overall
- Postgraduate – IELTS 6.5 overall

If you don't meet these requirements we offer a range of pre-sessional English courses, please see pages 20-21 for details. Please note that students who need a Tier 4 visa to study in the UK must meet the Home Office Visas and Immigration's minimum English language requirements, including component requirements.

Recent graduate careers

- Laboratory research
- Education
- Scientific publishing
- Medicine courses
- Dentistry courses
- Clinical science
- Scientific sales

Popular modules

Undergraduate

- Cancer Biology
- Coral Reef Biology
- Rational Drug Design
- Mechanisms of Neurological Disease
- Pollution: Impacts and Management

Postgraduate

- Molecular Medicine and Biotechnology
- Tropical Marine Systems
- Genomics
- Human Molecular Genetics
- Plant Biotechnology

COURSES
UNDERGRADUATE
BSc Biological Sciences **
BSc Biochemistry **
BSc Biomedical Science**
BSc Genetics **
BSc Marine Biology **
BSc Genetics and Genomics **
BSc Microbiology ** (subject to approval)
MMarBiol Marine Biology (Integrated Masters)
POSTGRADUATE - FEE BAND B
MSc Biotechnology
MSc Cancer Biology
MSc Molecular Medicine
MSc Tropical Marine Biology
MSD, MPhil, PhD Biochemistry
MSD, MPhil, PhD Biological Sciences
MSD, MPhil, PhD Cell and Molecular Biology
MSD, MPhil, PhD Chemical Biology
MSD, MPhil, PhD Environmental Governance
MSD, MPhil, PhD Environmental Sciences
MSD, MPhil, PhD Immunology
MSD, MPhil, PhD Marine Biology
MSD, MPhil, PhD Microbiology
MSD, MPhil, PhD Molecular Medicine

* This course has an optional year abroad variant
* This course has an optional placement year variant

WHY ESSEX?



Enjoy first-class lab facilities in our brand new STEM building, open for 2018 entry



Range of placement options at undergraduate level



Two-thirds of our research is rated "world leading" or "internationally excellent" (REF 2014)



Our coral reef research unit is the most extensive of its kind in the UK

“ I have always had a keen interest in science, thus choosing a degree within that subject was rather easy for me. I only applied to the University of Essex and luckily I was accepted. The University appealed to me due to its good reputation and its campus life. My course offered me a range of interesting subjects and topics. The lectures were stimulating and I gained a fascination with the subject. I am truly grateful for everything that I experienced at the University. ”

Sona Vardanyan, Norway, BSc Biomedical Science

BUSINESS AND MANAGEMENT

Essex Business School is the largest department at the University of Essex. We're a growing, ambitious and entrepreneurial community of more than 2,000 students, academics and practitioners from around the world.

English language requirements

- Undergraduate – IELTS 6.0 overall
- Postgraduate – IELTS 6.5 overall
- MBA – IELTS 6.5 overall (with all scores 6.0+)

For any postgraduate management courses in Colchester, we also require a writing score of 6.0.

If you don't meet these requirements we offer a range of pre-sessional English courses, please see pages 20-21 for details. Please note that students who need a Tier 4 visa to study in the UK must meet the Home Office Visas and Immigration's minimum English language requirements, including component requirements.

Popular modules

Undergraduate

- Business Strategy
- Digital Marketing and Social Media
- International Human Resource Management
- Strategic Entrepreneurship
- Management, Innovation and New Technology

Postgraduate

- International Business Environment
- Management Psychology
- Managing Across Cultures
- Managing for Ethics and Sustainability
- Financial Decision Making

Recent graduate careers

- Procurement
- Human resources
- Project management
- Strategic planning
- Operations management

COURSES

UNDERGRADUATE

- BSc Business Management (C) **
- BA Business Management and Modern Languages (C)
- BA Business Management with a Modern Language (C)
- BSc International Business and Entrepreneurship (S) +*
- BSc Management and Marketing (C) **
- BSc Management with Mandarin (C)
- BBA Business Administration (S) **
- BSc Tourism Management (S) **

POSTGRADUATE - FEE BAND C

- The Essex MBA - Band D (C) †
- MSc International Business and Entrepreneurship (S)
- MSc Entrepreneurship and Innovation (S)
- MSc International Logistics and Supply Chain Management (S)
- MBM Master of Business Management (S)
- MSc Business Analytics (S)
- MSc Global Project Management (S)
- MSc Human Resource Management (C)
- MSc Management (C)
- MRes Management and Organisation (C)
- MSD, MPhil, PhD Business Administration (S)
- MSD, MPhil, PhD Management Studies (C)
- PhD Business Analytics (S)
- PhD Entrepreneurship (S)

(C) Colchester Campus

(S) Southend Campus

* This course has an optional year abroad variant

* This course has an optional placement year variant

† Three years relevant work experience required

WHY ESSEX?



We're ranked top 25 in the UK for research excellence (REF 2014)



Our dedicated employability team offer you support and guidance around your career choice



Study abroad opportunities and work placements available at undergraduate level



We emphasise ethics and sustainable business practice

“ This qualification shaped my analytical thinking and leadership skills. Group projects with people of different international backgrounds and cultures helped me with team working. The course offered me an immense amount of learning that led me to secure my role in the UK. ”

Vandita Verma, India, MBA, now Business Development Manager at PSL Rheotek

COMPUTATIONAL FINANCE

We are an innovative, laboratory-based teaching and research centre, with an international reputation for cutting-edge work combining economic and financial modelling with computational implementation.

English language requirements

- Postgraduate – IELTS 6.0 overall

If you don't meet these requirements we offer a range of pre-sessional English courses, please see pages 20-21 for details. Please note that students who need a Tier 4 visa to study in the UK must meet the Home Office Visas and Immigration's minimum English language requirements, including component requirements.

COURSES

POSTGRADUATE - FEE BAND B

MSc Algorithmic Trading

MSc Computational Finance

PhD Computational Finance

Recent graduate careers

- Banking
- Insurance
- Investment funds
- Hedge funds
- Stock exchanges
- Financial IT providers

Popular modules

Postgraduate

- Introduction to Financial Market Analysis
- Industry Expert Lectures in Finance
- Financial Engineering and Risk Management
- Big Data for Computational Finance
- Quantitative Methods in Finance and Trading

WHY ESSEX?



Cross-disciplinary syllabus incorporating the latest research



Practical hands-on instruction across all courses



Excellent links with government and industry, particularly via our City Associates Board



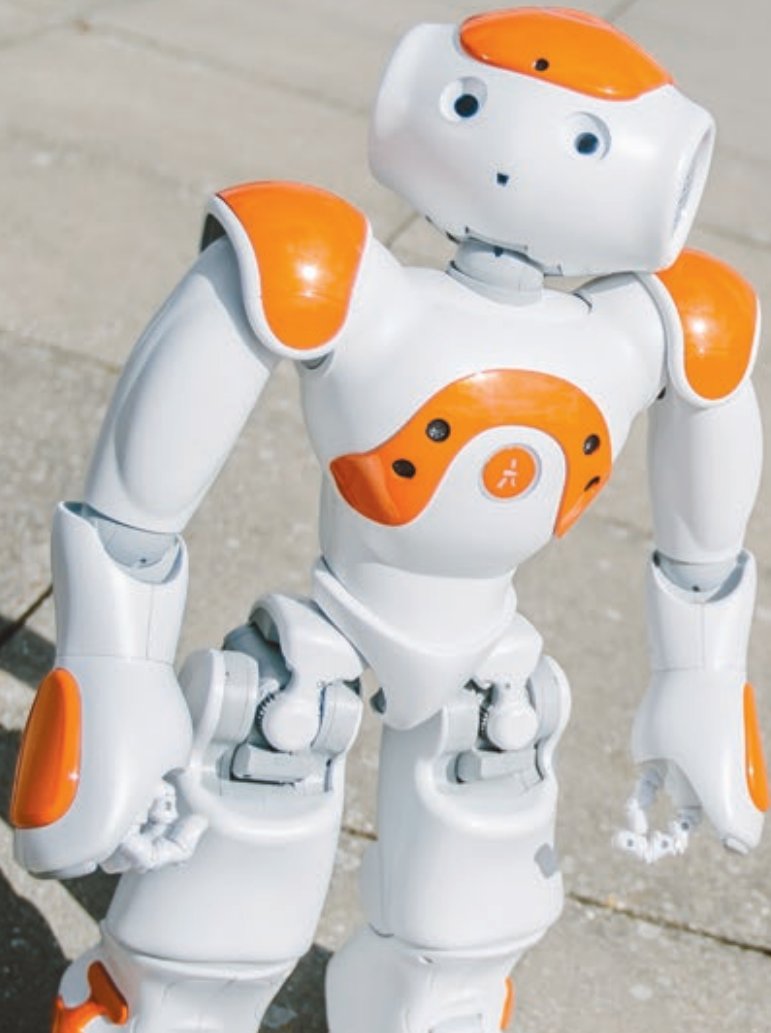
Some of our industrial links provide internships to selected students

“Essex is one of the few universities which specialises in computational finance. I am extremely interested in algorithmic trading and knew that my course would best prepare me for my future career path. I enjoyed the combination of theoretical classes with practical laboratory sessions where we were able to practically apply theory.”

Alexander Unterrainer, Italy, MSc Algorithmic Trading, currently working for Citi.

► www.essex.ac.uk/int18/ccfea

COMPUTER SCIENCE AND ELECTRONIC ENGINEERING



WHY ESSEX?



We achieved 92% student satisfaction in the most recent assessment (NSS 2016)



We offer specialist laboratories and facilities



Over two-thirds of our computer science research was rated as 'world leading' or 'internationally excellent' (REF 2014)



Gain professional IET and BCS accreditation – the basis for chartered engineer status

Our courses are guided by an Industrial Advisory Board of experts which includes representatives from companies such as Intel. Regardless of the study path you choose, you'll develop the skills and principles for a rewarding career.

English language requirements

- Undergraduate – IELTS 6.0 overall
- Postgraduate – IELTS 6.0 overall

If you don't meet these requirements we offer a range of pre-sessional English courses, please see pages 20-21 for details. Please note that students who need a Tier 4 visa to study in the UK must meet the Home Office Visas and Immigration's minimum English language requirements, including component requirements.

Recent graduate careers

- Games design
- Telecommunications
- Motorsport and aerospace engineering
- Software development
- Electronic engineering

Popular modules

Undergraduate

- Artificial Intelligence
- Web Application Programming
- Computer Game Design and Programming
- Computer Security
- Mobile Robotics

Postgraduate

- Digital Signal Processing
- IP Networking and Applications
- Machine Learning and Data Mining
- Game Artificial Intelligence
- Data Science and Decision Making

COURSES

UNDERGRADUATE

- BSc Computer Science **
- BEng Computer Networks **
- BSc Computer Games **
- BEng Computer Systems Engineering **
- BEng Computers with Electronics **
- BSc Information and Communication Technology **
- BSc Data Science and Analytics **
- BEng Electronic Engineering **
- BEng Communications Engineering **
- BEng Robotic Engineering **
- MEng Electronic Engineering (Integrated Masters)
- MEng Communications Engineering (Integrated Masters) *
- MSci Computer Science (Integrated Masters) *

POSTGRADUATE - FEE BAND B

- MSc Advanced Communication Systems
- MSc Advanced Computer Science
- MSc Advanced Web Engineering
- MSc Artificial Intelligence
- MSc Big Data and Text Analysis
- MSc Cloud Computing
- MSc Computer Engineering
- MSc Computer Games
- MSc Computer Science
- MSc Internet of Things
- MSc Intelligent Systems and Robotics
- MSc Electronic Engineering
- MSc Computer Networks and Security
- MSD, MPhil, PhD Applied Physics
- MSD, MPhil, PhD Computing and Electronic Systems
- MSD, MPhil, PhD Computer Science
- MSD, MPhil, PhD Electronic Systems Engineering

* This course has an optional year abroad variant

* This course has an optional placement year variant

“ My course deals with all the new aspects of emerging technology. The department has some great facilities, including robotics labs and embedded systems labs. The University has so many experts and experienced professors who have helped me in solving any problems that arise with my research. Overall I am very happy and proud to be a part of the university. ”

Aun Muhammad Hussain, Pakistan , MSc Electronic Engineering

► www.essex.ac.uk/int18/csee

We are one of Europe’s leading economics departments. Our creative and committed academics undertake world-leading research, pioneering new solutions to global issues.

English language requirements

- Undergraduate - IELTS 6.0 overall
- Postgraduate - IELTS 6.5 overall for MSc Economics and Econometrics, MRes Economics and all research degrees. IELTS 6.0 overall for all other degrees

If you don't meet these requirements we offer a range of pre-sessional English courses, please see pages 20-21 for details. Please note that students who need a visa to study in the UK must meet the Home Office Visas and Immigration's minimum English language requirements, including component requirements.

Recent graduate employers

- Santander
- Deloitte
- Citigroup
- Ernst and Young
- Morgan Stanley
- National government

Popular modules

- Undergraduate**
- Economic Development in Global Perspective
 - Labour Economics
 - International Trade
 - Corporate Finance
 - Financial Innovations and Monetary Policy
- Postgraduate**
- Time Series Econometrics
 - Game Theory and Applications
 - Environmental Economics
 - Behavioural Economics

COURSES
UNDERGRADUATE
BA, BSc Economics ⁺ *
BA, BSc Management Economics ⁺ *
BA, BSc International Economics ⁺ *
BA, BSc Financial Economics ⁺ *
BA Financial Economics and Accounting ⁺ *
BSc Economics with Mathematics ⁺ *
BA History and Economics ⁺ *
BA Economics with a Modern Language (includes year abroad)
POSTGRADUATE - FEE BAND C
MA Economics
MSc Money and Banking
MSc Behavioural Economics
MSc Accounting and Financial Economics
MSc Applied Economics and Data Analysis
MSc Computational Economics, Financial Markets and Policy
MSc Economics
MSc Economics and Econometrics
MSc Financial and Business Economics
MSc Financial Economics
MSc Financial Econometrics
MSc Financial Economics and Econometrics
MSc International Economics
MSc Management Economics
Graduate Diploma in Economics
Graduate Diploma in Statistics and Econometrics
MRes Economics
MPhil, PhD Economics
<small>⁺ This course has an optional year abroad variant</small>
<small>[*] This course has an optional placement year variant</small>

WHY ESSEX?

- ➔ The department is ranked 5th in the UK for research excellence (REF 2014)
- ➔ Ranked among the top 150 departments on the planet (QS 2017)
- ➔ Top 30 department in the UK (TGUG 2017)
- ➔ We achieved 92% student satisfaction in the latest assessment (NSS 2016)

“I was looking for a research-led learning experience and that’s what attracted me to Essex. The Economics department’s degree structure has been designed to maximise flexibility in module choices, allowing me to choose from a wide range of modules and shaping my degree to suit my particular areas of interest.

My participation in societies and volunteering really helped me to enhance my employability skills and enrich my time at Essex. My Essex experience indeed proved invaluable in securing my graduate role!”

Cheah Wai Kit, Malaysia, BSc Economics, 2013, Product Manager at United Overseas Bank (UOB), Malaysia

HEALTH AND SOCIAL CARE

We are at the forefront of preparing people to solve real-life issues in health and society, offering courses that both commissioners and employers believe in. People are at the heart of all we do.

English language requirements

- Undergraduate
- Nursing - IELTS 7.0 overall with 7.0 in each component
- Social Work and Occupational Therapy - IELTS 7.0 overall with a minimum of 6.5 in each component
- Speech and Language Therapy - 8.0 overall with a minimum of 7.5 in each component
- Postgraduate – IELTS 6.5 overall. Please check the department's website for requirements for Pre-Registration courses and Doctorate Clinical Psychology.

On-campus interviews may be required. If you don't meet these requirements we offer a range of pre-sessional English courses, please see pages 20-21 for details. Please note that students who need a Tier 4 visa to study in the UK must meet the Home Office Visas and Immigration's minimum English language requirements, including component requirements.

Popular modules

Undergraduate

- Emotional, Relational and Mental Health Issues
- Practice Interventions
- Culture of Communication
- To Do No Harm
- Concepts of Therapy

Postgraduate

- Health Policy and Integrated Governance
- Theory and Method in Health Research
- Transformation Through Occupation
- Occupational Performance and Process
- Research in Healthcare

COURSES

UNDERGRADUATE

- BA Social Work
- BSc Nursing (Adult) +
- BSc Nursing (Mental Health) +
- BSc Speech and Language Therapy ** (pending HCPC approval)
- BSc Occupational Therapy

POSTGRADUATE - FEE BAND B

- MA, MPhil, PhD Health and Organisational Research
- MSc Health Research
- MSc Occupational Therapy (Pre-Registration)
- MSc Speech and Language Therapy (Pre-Registration)
- MSD, MPhil, PhD Health Studies
- MSD, MPhil, PhD Nursing Studies
- MSD, MPhil, PhD Occupational Therapy
- MPhil, PhD Applied Psychology
- MSD, MPhil Social Policy
- PhD Social Work
- MSD, MPhil, PhD Speech and Language Therapy
- MPhil, PhD Applied Psychology
- Doctorate Clinical Psychology

+ This course has an optional year abroad variant

* This course has an optional placement year variant

WHY ESSEX?



Gain real experience through work placements and research



We encourage multidisciplinary working and have a reputation for being at the forefront of training high-quality health care professionals.



We have strong partnerships with local health authorities



Half of your nursing study period is spent in clinical settings

“ My experience of studying Occupational Therapy (OT) at the University of Essex was amazing. The learning experience was embedded with different activities including formal lectures, peer learning, self-directed study and specialist outside speakers. The variety of placements equipped me really well for practice and along with all the other opportunities of OT related activities, give a great starting point for continuing professional development. ”

Andrew Hughes, BSc Occupational Therapy

► www.essex.ac.uk/int18/hhs

History is about people and created by people. We're interested in history from the grass roots – how everyday people make and are affected by history – as well as from the top down.

English language requirements

- Undergraduate – IELTS 6.0 overall
- Postgraduate – IELTS 7.0 overall

If you don't meet these requirements we offer a range of pre-sessional English courses, please see pages 20-21 for details. Please note that students who need a Tier 4 visa to study in the UK must meet the Home Office Visas and Immigration's minimum English language requirements, including component requirements.

Recent graduate careers

- Government
- Museums
- Galleries
- Archaeology
- Archiving
- Education

Popular modules

Undergraduate

- China: The Long 20th Century
- The African American Experience
- Latin American History
- The United States and the Vietnam War
- From Stalin to Putin
- Slavery in the Atlantic World

Postgraduate

- Gender in Early Modern Europe c.1500-c.1800
- Race and Class in the United States, South Africa and Britain
- Narcotic Culture: A History of Drugs
- A Global History of Food, c.1400 - c.1750

COURSES

UNDERGRADUATE

- BA History +
- BA History and Criminology +
- BA History with Film Studies +
- BA History and Literature +
- BA History with Human Rights +
- BA Modern History +
- BA Modern History and International Relations +
- BA Modern History and Politics +
- BA History and Sociology +

POSTGRADUATE - FEE BAND B

- MA History
- Postgraduate Certificate in History
- MAD, MPhil, PhD History

+ This course has an optional year abroad variant

WHY ESSEX?



Top 10 in the UK with 97% student satisfaction (NSS 2016)



Top 25 in the UK for research excellence (REF 2014)



Study abroad as part of your course



Gain experience through voluntary work at local museums, archives and heritage sites

Research focus

Our Department is internationally recognised for the quality of its research across a broad range of areas from 1450 to the present. More than two-thirds of our research was rated 'world leading' or 'internationally excellent' in the REF 2014.

Members of our Department have a huge variety of research interests, ranging from social and cultural history to politics and international relations. Themes of particular interest in research include violence and protest, race, class formation, nationalism, cultural history, gender, and wars and revolutions. In line with our commitment to comparative history and global perspectives, our teaching and research team is international.

LAW AND HUMAN RIGHTS

Our teaching in law is based on our extensive research expertise and practical experience, both in the UK and abroad. Our Human Rights Centre is the UK’s leading centre for the interdisciplinary study of human rights theory and practice.

English language requirements

- Undergraduate – IELTS 6.0 overall
- Postgraduate – IELTS 6.5 for Masters courses (including 6.0 in writing), 6.5 for law research courses (including 6.5 in writing) and 7.0 for human rights research courses (including 6.5 in writing for selected courses).

Check www.essex.ac.uk/int18/courses for specific requirements. If you don't meet these requirements we offer a range of pre-sessional English courses, please see pages 20-21 for details. Please note that students who need a Tier 4 visa to study in the UK must meet the Home Office Visas and Immigration's minimum English language requirements, including component requirements.

Recent graduate careers

- Solicitor or barrister
- United Nations
- EU Commission
- Local authority lawyers
- Civil service

Popular modules

Undergraduate

- Company Law
- Criminal Law
- Family Law
- Foundations of Human Rights
- Medicine and the Law

Postgraduate

- Human Rights, International Relations and Diplomacy
- Cybercrime
- International Criminal Law
- International Child Law
- Transitional Justice

COURSES

UNDERGRADUATE

- LLB Law +
- LLB Law (Senior Status)
- LLB Law with Business +
- LLB Law with Human Rights +
- LLB Law with Politics +
- LLB Law with Philosophy +
- LLB English and French Law (Maîtrise) – including two years studying in France

POSTGRADUATE - FEE BAND B

- MA Theory and Practice of Human Rights
- MA Human Rights and Cultural Diversity
- LLM Economic, Social and Cultural Rights
- LLM International Human Rights Law
- LLM International Human Rights and Humanitarian Law
- LLM International Commercial and Business Law
- LLM International Trade Law
- LLM International Trade and Maritime Law
- MPhil, PhD Human Rights
- MPhil, PhD Law

+ This course has an optional year abroad variant

WHY ESSEX?



Gain practical experience with our Essex Law Clinic and Human Rights Clinic



Peer mentors guide you through your first year



Leading research expertise across commercial law, public law, and human rights law



We are the first university in the UK to sign a memorandum of understanding with the United Nations High Commission for Refugees (UNHCR)

“ When I thought of undertaking postgraduate studies in human rights, almost every programme I came across was located in the faculty of law. What I was looking for was a programme that would be multi-disciplinary in its approach. I was clearly aware of the limitations in a narrow and single-discipline approach to human rights. I did not know such a programme existed anywhere in the world, until I came across the human rights programme at the University of Essex. ”

Mutuma Ruteere, Kenya, MA Theory and Practice of Human Rights, UN Human Rights Council, Special Rapporteur
Graduate profiles for our Law programmes are available on our website. ▶ www.essex.ac.uk/int18/law

▶ www.essex.ac.uk/int18/law

▶ www.essex.ac.uk/int18/hrc

LIBERAL ARTS AND AREA STUDIES

We bring together academics from across the University. Our courses are interdisciplinary, allowing you to study a variety of subjects by choosing from modules in literature, history, philosophy, the history of art, sociology, and politics.

English language requirements

- Undergraduate – IELTS 6.0

If you don't meet these requirements we offer a range of pre-sessional English courses, please see pages 20-21 for details. Please note that students who need a Tier 4 visa to study in the UK must meet the Home Office Visas and Immigration's minimum English language requirements, including component requirements.

Recent graduate careers

- Civil service
- International embassies/agencies
- Tourism
- Media and journalism
- Government
- Politics

Popular modules

Undergraduate

- Anthropology of Latin America
- International Security Studies
- American Languages
- Europe: Myth and Idea
- World Cinema


COURSES


UNDERGRADUATE


BA American Studies (United States) ⁺
BA American Studies (United States) with Film ⁺
BA Criminology and American Studies ⁺
BA European Studies (including Year Abroad)
BA European Studies and Modern Languages
BA European Studies with French/German/Italian/Spanish
BA European Studies with Politics
BA Latin American Studies
BA Latin American Studies with Business Management
BA Latin American Studies with Human Rights
BA Liberal Arts ⁺
BA Global Studies ⁺
BA Global Studies and Modern Languages ⁺


⁺ This course has an optional year abroad variant
Where optional year abroad is not shown, the course includes a compulsory term or year abroad.
^{*} This course has an optional placement year variant

WHY ESSEX?

- 

Become an expert in American, European or Latin American studies
- 

Gain international experience by studying abroad for a term or a year
- 

A wide variety of language options available
- 

Flexible degree structures allow you to build a course according to your interests or major in a specific field

“What is so good about liberal arts is that you only have one compulsory module each year and the rest is up to you. This gives you the opportunity to build up your degree to how it would suit your particular future career, or if you are not quite sure yet what you want to do, you can prepare yourself for anything and everything. It is the perfect course to study no matter what you think about the future. You can choose from hundreds of different modules from a range of different fields.”

Kristin Aakvik, Norway, BA Liberal Arts



WHY ESSEX?



Work in our state-of-the-art interpreting lab and UN-style conference booths



Top 10 in the UK for research quality (REF 2014)



Ranked among the top 200 departments on the planet (QS 2017)



Choose from a wide range of modules in linguistics or translation and interpreting

We are one of the largest and most prestigious language and linguistics departments in the UK. You'll become part of an academic community that undertakes world-leading research.

English language requirements

- Undergraduate – IELTS 6.0 overall
- Postgraduate – 6.5 overall for Masters apart from MA Translation & Literature, MA Business Translation and Interpreting and MA Conference Interpreting and Translation, which in addition require minimum 6.0 in all components. 7.0 for research degrees. 6.0-6.5 in writing required for all courses.

Please see www.essex.ac.uk/int18/courses for specific requirements. If you don't meet these requirements we offer a range of pre-sessional English courses, please see pages 20-21 for details. Please note that students who need a Tier 4 visa to study in the UK must meet the Home Office Visa and Immigration's minimum English language requirements, including component requirements.

Recent graduate careers

- Education
- Learning support
- Media
- Publishing

Popular modules

Undergraduate

- Literature and Language Teaching
- Meaning and Words
- Second Language Learning
- Language Rights
- Sociolinguistics

Postgraduate

- Teaching, Listening and Speaking
- Sociocultural Linguistics
- Simultaneous Interpreting
- Written Translation
- Phonological Development

COURSES

UNDERGRADUATE

- BA English Language and History **
- BA English Language and Linguistics +
- BA English Language and Literature **
- BA English Language and Language Development **
- BA Linguistics **
- BA English Language and Sociology **
- BA Teaching English as a Foreign Language **

POSTGRADUATE - FEE BAND B

- MA Applied Linguistics
- MRes Analysing Language Use
- PG Diploma Chinese-English Translation and Interpreting
- MA Business Translation and Interpreting (Chinese-English)
- MA Conference Interpreting and Translation (Chinese-English)
- MA English Language and Linguistics
- MRes Experimental Linguistics
- MA Linguistic Studies
- MA, MRes Linguistics
- MA Psycholinguistics
- MA Language in Society
- MA Teaching English to Speakers of Other Languages (TESOL)
- MA Translation and Literature
- MA Translation, Interpreting and Subtitling
- MA Translation and Professional Practice
- MPhil, PhD Analysing Language Use
- MPhil, PhD Applied Linguistics
- MPhil, PhD English Language Teaching
- MPhil, PhD Experimental Linguistics
- MPhil, PhD Linguistics
- MPhil, PhD Psycholinguistics/Sociolinguistics

+ This course has an optional year abroad variant

* This course has an optional placement year variant

“What made Essex my first and only choice was the fact that they offered this unique Masters program - an MA in Translation, Interpreting and Subtitling. The course offers a great deal of variety and practicality. I was able to acquire skills and knowledge through preparing speeches and interpreting at student-led conferences, engage classmates in translation challenges, attend seminars and network with industry professionals. State-of-the-art facilities such as interpreting booths and specifically tailored computer labs only added to the authentic feel of a translator/interpreter setting.”

Nicholas Cumberbatch, Barbados - MA Translation, Interpreting and Subtitling

► www.essex.ac.uk/int18/linguistics

LITERATURE, FILM, AND THEATRE STUDIES

Our courses are taught by leading academics, as well as experienced writers, film makers and journalists, and allow you to follow specialised pathways or to combine your interests across our subject areas.

English language requirements

- Undergraduate – Multimedia Journalism - IELTS 7.0 overall with a minimum of 5.5 in each component. All other undergraduate courses - IELTS 6.0 overall
- Postgraduate – IELTS 7.0 overall with 6.5 in writing

If you don't meet these requirements we offer a range of pre-sessional English courses, please see pages 20-21 for details. Please note that students who need a Tier 4 visa to study in the UK must meet the Home Office Visas and Immigration's minimum English language requirements, including component requirements.

Recent graduate careers

- Journalism
- Stage management
- TV production
- Magazine editing
- Screenwriting
- Publishing

Popular modules

Undergraduate

- Understanding and Writing Science Fiction
- Myth and the Creative Process
- Film and Propaganda
- Film Animation
- Creative Performance

Postgraduate

- Adaptation
- Writing Magic
- African American Literature
- The New Nature Writing
- Documentary and the Avant-garde: Film, Video, Digital

COURSES

UNDERGRADUATE

- BA Creative Writing +
- BA Drama +
- BA Drama and Literature +
- BA English and United States Literature +
- BA English Literature +
- BA English and Comparative Literature +*
- BA Film and Creative Writing +
- BA Film Studies +
- BA Film Studies and Literature +
- BA Journalism with Business Management +*
- BA Journalism and Literature +*
- BA Journalism and English Language +*
- BA Journalism and Politics +*
- BA Journalism and Philosophy +*
- BA Journalism and Liberal Arts +*
- BA Journalism with Human Rights +*
- BA Journalism and Modern Languages
- BA Journalism and Sociology +*
- BA Journalism and Criminology +*
- BA Journalism and Economics +*
- BA Multimedia Journalism +
- BA Literature and/or with Modern Languages +
- BA Literature and Creative Writing +
- BA Literature and Sociology +

POSTGRADUATE - FEE BAND B

- MA American Literatures
- MA Avant-Gardes
- MA Literature
- MA Film and Literature
- MA Film Studies
- MA Creative Writing
- MA Playwriting
- MA Wild Writing: Literature, Landscape and the Environment
- MAD, MPhil, PhD Creative Writing
- MAD, MPhil, PhD Film Studies
- PhD Film Studies (Creative Practice)
- PhD Journalism
- MAD, MPhil, PhD Literature
- MAD, MPhil, PhD Theatre Studies

+ This course has an optional year abroad variant

* This course has an optional placement year variant

WHY ESSEX?



Top 10 for dance, drama and cinematics (Complete University Guide 2017)



Our undergraduate courses in Journalism develop your skills across all media - radio, television, print, online and social networks



Use of our state-of-the-art Lakeside Theatre



Dedicated film screening and editing facilities and media centre

Essex Business School is the largest department at the University of Essex. We're a growing, ambitious and entrepreneurial community of more than 2,000 students, academics and practitioners from around the world.

English language requirements

- Undergraduate – IELTS 6.0 overall
- Postgraduate – IELTS 6.5 overall

For any postgraduate marketing courses in Colchester, we also require a writing score of 6.0. If you don't meet these requirements we offer a range of pre-sessional English courses, please see pages 20-21 for details. Please note that students who need a Tier 4 visa to study in the UK must meet the Home Office Visas and Immigration's minimum English language requirements, including component requirements.

Recent graduate careers

- Advertising and marketing
- Entrepreneurship
- Management
- International project management
- Recruitment
- Business creation

Popular modules

Undergraduate

- Consumer Behaviour
- Brand Management
- Corporate Marketing
- E-commerce
- Managing innovation

Postgraduate

- Critical Marketing
- Strategic Brand Communication
- Corporate Marketing Strategy
- Digital Marketing
- Global Project and Product Development

COURSES

UNDERGRADUATE

BSc Management and Marketing ⁺⁺ (C)

BSc Marketing ⁺⁺ (S)

POSTGRADUATE - FEE BAND C

MSc Marketing and Brand Management (C)

MSc Marketing Management (C)

MSc International Marketing and Entrepreneurship (S)

(C) Colchester Campus

(S) Southend Campus

⁺ This course has an optional year abroad variant

^{*} This course has an optional placement year variant

WHY ESSEX?



Ranked in the UK's top 25 for research excellence (REF 2014)



Our dedicated employability team offer you support and guidance around your career choice



More than half of our students are from overseas, so you're joined in class by students from all over the world.



Study abroad opportunities and work placements available at undergraduate level

“As an international student, I was very much attracted by the high level of cultural diversity of Essex as it allows me to meet people from around the world, which enables me to widen my perspectives. Also, Essex Business School's high ranking in research caught my attention and made me decide to study Management and Marketing at Essex. The university also provides us with many career opportunities such as work experiences and employability workshops that enhance our employability.”

Hui Kei Chan, Hong Kong, BSc Management and Marketing

Our staff are award-winning teachers as well as world-class academics, and our staff and students know each other personally – we are a true academic family.

English language requirements

- Undergraduate – IELTS 6.0 overall
- Postgraduate – IELTS 6.0 overall

If you don't meet these requirements we offer a range of pre-sessional English courses, please see pages 20-21 for details. Please note that students who need a Tier 4 visa to study in the UK must meet the Home Office Visas and Immigration's minimum English language requirements, including component requirements.

Recent graduate careers

- Accountant
- Actuary
- Economist
- Financial Analyst
- Risk Assessor
- Statistician

Popular modules

Undergraduate

- Survival Analysis
- Complex Variables
- Graph Theory
- Mathematical Biology
- The Laws of Physics

Postgraduate

- Nonlinear Programming
- Mathematics of Portfolios
- Graph Theory
- Data, Probability and Statistics
- Cryptography and Codes

COURSES
UNDERGRADUATE
BSc Actuarial Science ⁺ *
BSc Economics and Mathematics ⁺ *
BSc Finance and Mathematics ⁺ *
BSc Mathematics ⁺ *
BSc Mathematics and Statistics ⁺ *
BSc Mathematics with Computing ⁺ *
BSc Mathematics with Physics ⁺ *
POSTGRADUATE - FEE BAND B
MSc Actuarial Science
MSc Data Science
MSc Mathematics
MSc Mathematics and Finance
MSc Statistics
MSc Statistics and Operational Research
MSc Statistics and Finance
Postgraduate Diploma Actuarial Science
Postgraduate Diploma Mathematics and Finance
Postgraduate Diploma Statistics and Finance
Postgraduate Diploma Statistics and Operational Research
Graduate Diploma in Mathematics
MSD, MPhil, PhD Applied Mathematics
MSD, MPhil, PhD Bioinformatics
MSD, MPhil, PhD Biostatistics
MSD, MPhil, PhD Mathematical Biology
MSD, MPhil, PhD Mathematics
MSD, MPhil, PhD Operational Research
MSD, MPhil, PhD Pure Mathematics
MSD, MPhil, PhD Statistics

⁺ This course has an optional year abroad variant

^{*} This course has an optional placement year variant

WHY ESSEX?



Small and friendly department



Placement year and study abroad options available at undergraduate level



BA Actuarial Science offers exemptions from all eight IFA examinations



Postgraduate courses specialising in data science and statistics

“ My year at Essex was both challenging and exciting. To achieve good results I had to study a lot but it was so amazing to obtain new knowledge, broaden my experience, and find new friends. The friendly atmosphere, supportive and very professional staff were the main advantages of the Department of Mathematical Sciences. The structure of my course was excellent, combining very useful financial modules (financial modelling, risk management, etc) and mathematical subjects (portfolio mathematics, research methods etc), which complemented each other and gave full understanding of the mathematical tools applied in the financial sphere. ”

Maryam Belgibayeva, Kazakhstan, MSc Mathematics and Finance

MODERN LANGUAGES

Studying languages opens the door to a whole new world. At Essex, we give you access to other countries, people and cultures to develop your language abilities, cultural awareness, and translation, interpreting and subtitling skills.

English language requirements

- Undergraduate – IELTS 6.0

If you don't meet these requirements we offer a range of pre-sessional English courses, please see pages 20-21 for details. Please note that students who need a Tier 4 visa to study in the UK must meet the Home Office Visas and Immigration's minimum English language requirements, including component requirements.

Recent graduate careers

- Education
- Learning support
- Media
- Publishing
- Journalism
- Marketing

Popular modules

Undergraduate

- French Cinema and Culture
- Three Countries, One Language – Austria, Switzerland and Germany
- Brazil in Focus – Business, Culture and Society
- Spanish and Latin American Art, Film and Music
- La Dolce Italia – a Journey Across Enduring Italian Traditions
- Initial Mandarin Chinese

COURSES
UNDERGRADUATE
BA Language Studies *
BA French Studies and Modern Languages
BA German Studies and Modern Languages
BA International Relations and Modern Languages +
BA Italian Studies and Modern Languages
BA Modern Languages
BA Modern Languages and English Language
BA Modern Languages and Linguistics
BA Modern Languages and Teaching English as a Foreign Language
BA Modern Languages with Latin American Studies
BA Portuguese Studies and Modern Languages
BA Spanish Studies with Modern Languages
BA Spanish, Portuguese and Brazilian Studies
MLang Modern Languages (Translation) (4 year Integrated Masters)

All courses are four years including year abroad apart from
* BA Language Studies (not available with year abroad) and
+ BA International Relations and Modern Languages (where an optional year abroad is available)

WHY ESSEX?



Top 10 in the UK for research quality (REF 2014)



Modern languages at Essex was ranked top 10 for student satisfaction in the latest assessment (NSS 2016)



Put your language skills to use during study abroad



Opportunity to study translation, interpreting and subtitling

Why study abroad?

Study abroad is extremely worthwhile and enjoyable both socially and educationally.

As well as experiencing life in another country, your study abroad experience can help you in your future career, showing that you are naturally outgoing and adventurous, open to new ideas and methods of working. More and more students are enjoying spending a period of study in another country as part of their studies.

After your year abroad, you will be able to present future employers with evidence of your capacity for inter-cultural understanding, self-reliance and independence.

► www.essex.ac.uk/int18/modlang

PHILOSOPHY AND ART HISTORY

We offer degrees in both philosophy and art history at undergraduate and postgraduate levels, including opportunities to explore interdisciplinary themes across the two areas.

English language requirements

- Undergraduate – IELTS 6.0 overall
- Postgraduate – IELTS 6.0 for Graduate Diplomas, IELTS 6.5 with 6.0 in writing for art history masters courses, IELTS 7.0 for art history research degrees and all philosophy courses

If you don't meet these requirements we offer a range of pre-sessional English courses, please see pages 20-21 for details. Please note that students who need a Tier 4 visa to study in the UK must meet the Home Office Visas and Immigration's minimum English language requirements, including component requirements.

Recent graduate careers

- Research and analysis work
- Galleries
- Museums
- Publishing

Popular modules

Undergraduate

- Art and Ideas
- Philosophy and Religion
- Art in Latin America
- Freud and the Philosophy of the Unconscious
- Art, Sex and Death

Postgraduate

- Philosophy and Aesthetics
- Contemporary Critical Theory
- Phenomenology and Existentialism
- Critique and Curating
- Art, Architecture and Urbanism

COURSES

UNDERGRADUATE

- BA Art History +
- BA Art History and History +
- BA Art History and/or with Modern Languages +
- BA Film Studies and Art History +
- BA Curatorial Studies +
- BA Literature and Art History +
- BA Philosophy and Art History +
- BA Philosophy +
- BA Philosophy, Religion and Ethics +
- BA Philosophy and History +
- BA Philosophy and Law +
- BA Philosophy and Literature +
- BA Philosophy and Politics +
- BA Philosophy and Sociology +
- BA Philosophy with Human Rights +

POSTGRADUATE - FEE BAND B

- MA Art History and Theory
- MA Curating
- Graduate Diploma in Art History and Theory
- Graduate Diploma in Philosophy
- MA Philosophy and Art History
- MA Philosophy (Continental Philosophy pathway)
- MA Philosophy (Critical Social Theory pathway)
- MA Philosophy (Philosophy and Psychoanalysis pathway)
- MAD, MPhil, PhD Art History and Theory
- MAD, PhD Philosophy

+ This course has an optional year abroad variant

* Four years including year abroad

WHY ESSEX?



Top 20 for philosophy research departments in the UK (REF 2014)



Art history is ranked 6th among UK art history departments (REF 2014)



We are a leading centre for continental philosophy



We are home to ESCALA, the most important collection of Latin American art in Europe

“ I decided to study at Essex for two reasons: firstly because the School is renowned for its study of modern and contemporary art, and secondly because two of my professors from Mexico, who I admire, studied at Essex. The modules have been excellent and they’ve taught me to think in a more structured way. I have particularly enjoyed studying modern and contemporary art because, not only is it an important element of art, it is also a source of philosophy and radical thinking that is relevant to many of the issues our world currently faces. After I have finished my course, I intend to go back to Mexico and apply all that I have learnt at Essex whilst working as a researcher at a modern and contemporary art museum. I really want to make a significant contribution! ”

David Flores, Mexico, MA Art History and Theory

► www.essex.ac.uk/int18/artphil

POLITICS AND INTERNATIONAL RELATIONS

Some of the biggest names in the field work at Essex, giving you unrivalled access to the best minds in politics. As well as conducting ground-breaking research, your lecturers advise political parties, governments and international NGOs.

English language requirements

- Undergraduate – IELTS 6.0 overall
- Postgraduate – IELTS 6.5 overall

If you don't meet these requirements we offer a range of pre-sessional English courses, please see pages 20-21 for details. Please note that students who need a Tier 4 visa to study in the Home Office Visas and Immigration's minimum English language requirements, including component requirements.

Recent graduate careers

- Government
- Civil service
- Media and journalism
- Voluntary sector
- Political research
- Police and armed forces

Popular modules

Undergraduate

- Authoritarianism and Corruption
- International Security Studies
- Human Rights and Global Justice
- Mass Media and Democracy
- Conflict Analysis

Postgraduate

- Conflict Resolution
- Political Economy
- International Negotiation
- Ideology and Political Discourse
- Environmental Politics

COURSES

UNDERGRADUATE

- BA Politics**
- BA Politics and International Relations**
- BA International Relations**
- BA Philosophy, Politics and Economics**
- BA Economics and Politics**
- BA Political Economics**
- BA Political Theory and Public Policy**
- BA Politics with Human Rights**

POSTGRADUATE - FEE BAND C

- MA Politics
- MA, MSc Conflict Resolution
- MA, MSc Global and Comparative Politics
- MA Ideology and Discourse Analysis
- MA, MSc, MRes International Relations
- MA, MSc, MRes Political Economy
- MA, MSc, MRes Political Science
- MA Political Theory
- MA, MSc Public Opinion and Political Behaviour
- MA United States Politics
- Graduate Diploma Politics
- PhD, PhP Government

+ This course has an optional year abroad variant

* This course has an optional placement year variant

WHY ESSEX?



UK's leading political science research department (REF)



Top in the UK for research excellence (REF 2014)



Ranked top 10 in the world for political science and international relations (CWUR 2017)



Top 20 in the UK with 96% student satisfaction (NSS 2016)

“There were two main reasons for deciding to come to Essex. The first was the reputation of the Department of Government, the best department in the study of politics in the United Kingdom and one that is also widely recognised overseas. The second reason was because I had heard the University was one of the most internationally diverse, and I was looking forward to sharing my academic experiences with people from different contexts and backgrounds. This has been, undoubtedly, a very fulfilling experience and I would recommend for anyone who is interested in politics to study here.”

Joshua Hurtado, Mexico, MA International Relations

► www.essex.ac.uk/int18/government

PSYCHOSOCIAL AND PSYCHOANALYTIC STUDIES

We're unique: the only place where under one roof you can find a multifaceted clinical and academic approach to both psychoanalytic and Jungian studies.

English language requirements

- Undergraduate – IELTS 6.0 overall
- Postgraduate – IELTS 6.5 for taught courses, IELTS 7.0 for research degrees

If you don't meet these requirements we offer a range of pre-sessional English courses, please see pages 20-21 for details. Please note that students who need a Tier 4 visa to study in the UK must meet the Home Office Visas and Immigration's minimum English language requirements, including component requirements.

Recent graduate careers

- Education
- Youth work
- Health and social care
- Learning support
- Mental health
- Nursing

Popular modules

Undergraduate

- Child, Adolescent and Adult Development
- Trauma in Individuals, Groups and Organisations
- Violence and Projective Processes in Individuals and Society
- Contemporary Therapeutic Practice

Postgraduate

- Dreams and Myths
- Freud in Contexts
- Psychoanalysis of Groups and Organisations
- Context of the Refugee Experience
- Psychosocial Perspectives of Human Rights

COURSES

UNDERGRADUATE

FdA, BA Therapeutic Communication and Therapeutic Organisations (C)(S) +

BA Psychoanalytic Studies (C) +*

BA Therapeutic Care (S) +

BA Childhood Studies (C) +*

POSTGRADUATE - FEE BAND B

MA Psychoanalytic Studies

MA Jungian and Post-Jungian Studies

MA Refugee Care

PG Diploma, MA Management and Organisational Dynamics

MA Psychodynamic Counselling

Graduate Diploma in Psychodynamic Counselling

PhD Psychoanalytic Studies

PhD Refugee Care

(C) Colchester Campus

(S) Southend Campus

+ Optional study abroad year available

* Optional placement year available

WHY ESSEX?



94% student satisfaction rate (NSS 2016)



Strong links with the local National Health Service, education and care services and professional institutions



Ranked top 20 in the UK for research excellence (REF 2014)



The Department incorporates the Centre for Trauma, Asylum and Refugees

“ My ultimate career goal is to work with refugee children and provide therapeutic services. When I was researching graduate courses I came across the MA Refugee Care offered at the University of Essex. This course was different from any other refugee studies programmes that I have seen. It focused on the essential issues relating to refugees and the refugee experience, as well as emphasising therapeutic practices. From the first day on campus I managed to meet a lot of graduate students from various majors. I am very much enjoying the social experience at the University. ”

Nicky Phelps, United States, MA Refugee Care

► www.essex.ac.uk/int18/pps

Our research is recognised internationally and has an impact across many areas. Our research groups focus on cognitive psychology, sensory and cognitive neuroscience, and social psychology. Undergraduate students take part in this research during their studies.

English language requirements

- Undergraduate – IELTS 6.0 overall
- Postgraduate – IELTS 7.0 overall

If you don't meet these requirements we offer a range of pre-sessional English courses, please see pages 20-21 for details. Please note that students who need a Tier 4 visa to study in the UK must meet the Home Office Visas and Immigration's minimum English language requirements, including component requirements.

Recent graduate careers

- Clinical, forensic, educational and occupational psychology
- Social work
- Mental health care
- Management
- Human resources
- Media and marketing

Popular modules

Undergraduate

- Brain and Behaviour
- Cognitive Psychology
- Developmental Psychology
- Social Psychology
- Placement year

Postgraduate

- Cognitive Neuropsychology of Language
- Neurocognition of Language
- Advanced Developmental Psychology
- Advanced Social Psychology
- Perception and Cognition

COURSES

UNDERGRADUATE

BA, BSc Psychology +

BSc Psychology with Cognitive Neuroscience +

POSTGRADUATE - FEE BAND B

MSc Advanced Psychology

MSc Psychology (conversion course)

MSc Research Methods in Psychology

MSc Cognitive Neuroscience

MSc Cognitive Neuropsychology

MSc Language and the Brain

MSD, MPhil, PhD Psychology

+ This course has an optional year abroad variant

WHY ESSEX?



Exceptional research labs and facilities, including our Centre for Brain Science



We're ranked 13th in the UK for our research (REF 2014)



Courses accredited by the British Psychological Society



We are home to an ESRC-accredited Doctoral Training Centre

“The main reason I decided to study at Essex was the University's strong research rating; psychology is a science, so a good research ranking was important to me. The Department of Psychology is great. First of all, the academic staff are excellent and, whenever you have questions or need something clarified, lecturers are always there to help. The teaching itself is also very good, with aspects about the modules clearly outlined. On the technical side, my department is well equipped and all psychology students have access to great lab facilities, with modern computers and a range of software.”

Le An Trong Dinh, Norway, BSc Psychology

SOCIOLOGY AND CRIMINOLOGY

We embed our innovative and sometimes controversial research into our courses, linking theory with evidence. Our world-leading academics will teach you to have your finger on the pulse of modern society.

English language requirements

- Undergraduate – IELTS 6.0 overall
- Postgraduate – IELTS 6.5 overall (with all scores 6.0+)

If you don't meet these requirements we offer a range of pre-sessional English courses, please see pages 20-21 for details. Please note that students who need a Tier 4 visa to study in the UK must meet the Home Office Visas and Immigration's minimum English language requirements, including component requirements.

Recent graduate careers

- Paralegal and law
- Probation
- Youth and community work
- Public relations and marketing
- Housing, care, health and welfare services
- Police and community safety

Popular modules

Undergraduate

- Globalisation and Crime
- Race, Class and Gender
- Digital Society
- Social Anthropology
- Policing, Punishment and Society

Postgraduate

- Advertising: Commerce and Creativity
- Digital Economy
- Critical Perspectives on Terrorism and Counter-Terrorism
- Colonialism, Cultural Diversity and Human Rights
- Panel Data Methods

COURSES

UNDERGRADUATE

- BA Criminology **
- BA Criminology with Social Psychology **
- BA Communications and Digital Culture **
- BA Sociology **
- BA Sociology and Criminology **
- BA Sociology and Politics **
- BSc Sociology with Applied Quantitative Research Methods **
- BA Sociology with Human Rights **
- BA Sociology with Psychosocial Studies **
- BA Social Anthropology **
- BA Social Anthropology with Human Rights **
- BA Sociology with Social Psychology **

POSTGRADUATE - FEE BAND C

- MA Advertising, Marketing and the Media
- MSc Criminology and Socio-Legal Research
- MA Criminology
- MA, MSc Migration Studies (subject to approval)
- MA Sociological Research Methods
- MA Sociology
- MSc Survey Methods for Social Research
- MSc Organised Crime, Terrorism and Security
- MA Sociology and Management
- MA Sociology by Dissertation
- MPhil, PhD Criminology
- MPhil, PhD Sociology
- PhD Survey Methods

* This course has an optional year abroad variant

* This course has an optional placement year variant

WHY ESSEX?



98% student satisfaction (NSS 2016), ranked in the top 10% for UK universities



Ranked in the top 30 departments in the world by QS World University Rankings (2016)



Ranked top 10 in the UK for research quality (REF 2014)



Dedicated student resource centre offering academic and personal support

“The Department provides a wonderful, friendly environment for postgraduate study and research. I love the variety of activities such as attending insightful conferences. I am particularly interested in culture, crime and media studies, research on citizenship and identity, and qualitative methods. I find people’s perception of crime and how it has evolved throughout history a very interesting area of study. I really enjoy becoming more knowledgeable within my field and delivering unique and original work.”

Deniz Unan, Turkey, MA Criminology and Sociology, PhD Sociology

► www.essex.ac.uk/int18/sociology

SPORT, REHABILITATION AND EXERCISE SCIENCES

Our new School of Sport, Rehabilitation and Exercise Sciences provides an exciting opportunity to join a community focused on these areas of study.

English language requirements

- Undergraduate – Physiotherapy - IELTS 7.0 overall with a minimum of 6.5 in each component. All other undergraduate courses - IELTS 6.0 overall
- Postgraduate – IELTS 6.5 for MSc Sports and Exercise Science and all research degrees, IELTS 7.0 with no element below 6.5 for MSc Physiotherapy

If you don't meet these requirements we offer a range of pre-sessional English courses, please see pages 20-21 for details. Please note that students who need a Tier 4 visa to study in the UK must meet the Home Office Visas and Immigration's minimum English language requirements, including component requirements.

Recent graduate careers

- Teaching
- Exercise physiology
- Fitness management
- Health promotion
- Personal training
- Sports coaching

Popular modules

Undergraduate

- Neuromusculoskeletal Physiotherapy
- Nutrition and Drugs in Sport and Exercise
- Health and Lifestyle
- Sports Injuries and Exercise Rehabilitation
- Psychology of Coaching

Postgraduate

- Musculoskeletal Physiotherapy
- Cardiorespiratory Physiotherapy
- Neurological Physiotherapy

COURSES

UNDERGRADUATE

BSc Physiotherapy

BSc Sports and Exercise Science **

BSc Sports Performance and Coaching **

BSc Sports Therapy **

POSTGRADUATE - FEE BAND B

MSc Physiotherapy (Pre-Registration)

MSc Sport and Exercise Science

MSD, MPhil, PhD Physiotherapy

MSD, MPhil, PhD Sports and Exercise Science

MSD, MPhil, PhD Sports and Exercise Medicine

MSD, MPhil, PhD Sports and Exercise Psychology

+ This course has an optional year abroad variant

* This course has an optional placement year variant

WHY ESSEX?



Practice your skills in our dedicated Sports and Physiotherapy labs



Work with elite athletes and gain experience in our renowned Human Performance Unit



Gain work experience through placement periods and at our on-campus Sports Therapy clinic



Brand new Sports Centre on Colchester campus from 2018

“ Throughout my time at Essex I learnt about and worked with a variety of groups such as elite performers, school children, and patient populations, all of which I thoroughly enjoyed. All academics are extremely helpful and incredibly knowledgeable in a variety of areas. Their expertise, experience and enthusiasm really enables students to develop and grow throughout their university career. ”

Nikki Twine, BSc Sports and Exercise Science

► www.essex.ac.uk/int18/sres

IMPORTANT INFORMATION

About this prospectus

This prospectus tries to answer your questions about life and academic provision on offer at the University of Essex. It was prepared in 2017 and refers to courses which will be available in 2018. Although great care is taken in compiling this prospectus, it is for the general guidance of prospective students only. The University cannot guarantee the provision of all the courses and services in the event of circumstances beyond its control and therefore reserves the right to make variations to the content and method of delivery of programmes, courses and other services and to merge or combine programmes or courses, if such action is reasonably considered to be necessary by the University.




The most up-to-date information in relation to course structures is available on our programme specifications webpages.
► www.essex.ac.uk/programmespecs

The University cannot be held responsible for failure/delay in performing obligations caused by things beyond its reasonable control, such as fire, flood or industrial action. In accepting an offer of a place at the University, you consent to incorporation of this notice as a term of contract between you and the University. The full Procedures, Rules and Regulations of the University are set out in the Charter, Statutes and Ordinances and in the University Regulations, Policy and Procedures.
► www.essex.ac.uk/int18/regs

Data for marketing purposes

Data have been selected for marketing purposes but all claims are based on the most current data that were available at the time of print.

Keep up-to-date by following us on Facebook, Twitter and Vimeo:

-  facebook.com/essexuniio
-  twitter.com/uessex_intl
-  vimeo.com/uniofessex

Colchester Campus

Wivenhoe Park
Colchester CO4 3SQ
United Kingdom
T +44 (0)1206 873333

Southend Campus

Elmer Approach
Southend-on-Sea SS1 1LW
United Kingdom
T +44 (0)1702 328200

Undergraduate admissions
E admit@essex.ac.uk

Postgraduate admissions
E pgadmit@essex.ac.uk

Contact our regional offices:

Africa
E africa@essex.ac.uk

China
E china@essex.ac.uk

India and subcontinent
E india@essex.ac.uk

Middle East and North Africa
E mena@essex.ac.uk

South East Asia
E sea@essex.ac.uk

BUT DON'T JUST TAKE OUR WORD FOR IT

WE HAVE THE BEST
POLITICS DEPARTMENT IN THE UK. (REF 2014)

WE'RE
TOP 5
FOR SOCIAL SCIENCE
AND TOP 20 IN THE UK
FOR RESEARCH
EXCELLENCE. (REF 2014)

WE ARE IN THE
TOP 10
FOR THE AMOUNT
WE SPEND ON OUR
SERVICES AND
FACILITIES. (Good University Guide 2017)

WE'RE RANKED IN THE TOP 20
MOST INTERNATIONAL UNIVERSITIES IN THE WORLD. (THE 2016-17)

OUR STUDENTS
VOTE US IN THE
TOP 10
FOR STUDENT
SATISFACTION. (NSS 2013, 2014, 2015, 2016)

WE WERE AWARDED
THE QUEEN'S
ANNIVERSARY PRIZE
IN 2010 IN
RECOGNITION OF OUR
WORK ADVANCING
HUMAN RIGHTS
ACROSS
THE GLOBE.

95% OF OUR INTERNATIONAL GRADUATES WERE IN
GRADUATE LEVEL EMPLOYMENT OR FURTHER
STUDY WITHIN 6 MONTHS OF GRADUATION (DLHE 2015)

