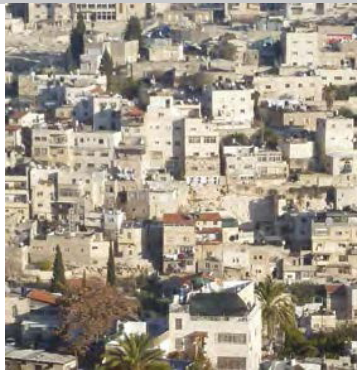


# Masters Course Guide

For entry September 2017



- 01 Welcome from Head of School
  - 02 UCL: London's Global University
  - 03 The Bartlett School of Planning
  - 04 Professional Accreditation
  - 05 Courses
- 

- 06 MSc Spatial Planning (SP)
  - 08 MSc International Planning (IP)
  - 10 MSc Urban Design and City Planning (UDCP)
  - 12 MSc International Real Estate and Planning (IREP)
  - 14 MSc Urban Regeneration (UR)
  - 16 MSc Housing and City Planning (HCP)
  - 18 MSc Infrastructure Planning, Appraisal and Development (IPAD)
  - 20 MSc Sustainable Urbanism (SU)
  - 22 MSc Transport and City Planning (TCP)
  - 24 MPlan City Planning (CP)
  - 28 MRes Inter-disciplinary Urban Design (IUD)
- 

- 32 Applying and Fees
- 33 Scholarships and Prizes
- 34 Directory of MSc Modules



The Bartlett School of Planning at UCL is a leading centre for planning education and research. Established in 1914, it has been home to some of the most well-known figures in British planning, including Sir Patrick Abercrombie, Lord William Holford, Lord Richard Llewelyn Davies and Sir Peter Hall.

The School began offering masters level courses in planning in the 1960s. The first was the MPhil Town Planning, which welcomed its first students in 1964. This was followed by courses in European Property Development and Urban Regeneration in the late 1990s. The last 15 years have seen significant growth in planning education at UCL. During that time, the number of staff members more than quadrupled to 52, with a similar ratio of growth in undergraduate, postgraduate taught and doctoral student numbers. In 2016/17, there were more than 500 students studying planning at all levels at UCL.

This growth in numbers has tracked our successes in research and in attracting some of the very best planning researchers and teachers to the School. We have a strong track-record in urban design, in urban regeneration, in infrastructure planning and transport, in local and regional development, in housing and in debating the nature of planning and its purpose. Added to this, the School contains staff members from many disciplinary backgrounds: from architecture and urban design through geography, sociology, economics, political science, real estate and of course planning and planning practice. Our key concern is with the contribution that planning can make to the creation of sustainable places.

The School benefits greatly from its position in a global top-ten research university and in a Faculty of the Built Environment – ‘The Bartlett’ – with an international reputation in architecture, planning and development planning, construction and project management and a range of related disciplines.

Today, the School offers three undergraduate and eleven postgraduate (taught) degree programmes in many aspects of planning. These build on the school’s reputation for excellent, policy-focused research. Each aims to equip students with the skills and the knowledge needed for a career in planning or in related areas of professional practice. All are accredited by the UK’s professional institutes for planning and property: the Royal Town Planning Institute and the Royal Institution of Chartered Surveyors. We hope that this brochure will help you navigate around our various programmes and find the one that best fits with your career goals.

## **Professor Nick Gallent**

Head of The Bartlett School of Planning



## 02 UCL: London's Global University

Founded in 1826 to open up education in England for the first time to students of any race, class or religion, UCL was also the first university to welcome female students on equal terms with men. Academic excellence and conducting research that addresses real-world problems inform our ethos to this day.

---

With 4,000 academic and research staff and 30,000 students, all members of the UCL community are encouraged to be ambitious yet idealistic. At UCL we're proud of our pioneering history, our distinguished present and our exciting future. UCL is a great place to be a student – here are some of the reasons why.

### World-leading reputation

- 1st - we are the most productive research university in Europe, and highly cited (source: SIR Global Ranking).
- 1st - rated the best research university in London, and third best in the UK overall, by the UK government's latest Research Assessment Exercise (RAE).
- 7th in the world (QS World University Rankings 2016/17).
- UCL has the best academic to student ratio in the UK – 1:10.2 compared to the national average of 1:17.8.
- 29 Nobel Prize winners – one per decade since the prize's inauguration in 1901.
- UCL staff and students come from a total of 151 countries.

### We attract the best and brightest staff and students

- 2nd highest number of professors in any UK university.
- 920 professors; the UK average is 105.
- 6th highest number of citations per academic staff number (source: QS).
- You'll study with world-leading experts, and benefit from a programme of distinguished visitors and guest speakers.
- You'll benefit from outstanding individual attention for your studies.
- Our wide-ranging expertise across all fields of study provides opportunities for groundbreaking interdisciplinary investigation.



The Bartlett School of Planning is one of the oldest and most respected Schools of planning in the world. In 2014 we celebrated our centenary, and as we pass this historic milestone, we are larger, more diverse, more active and in a stronger position than ever before to address the planning challenges of the future.

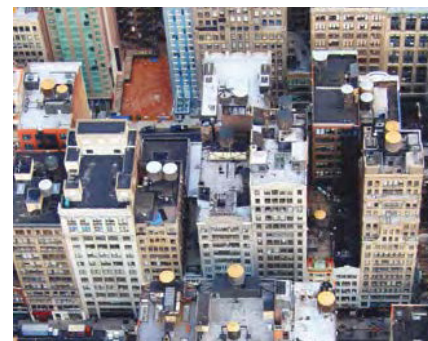
Our location in Bloomsbury, in the heart of central London – one of the world's most dynamic and cosmopolitan cities – has always placed us at the forefront of policy-relevant critical debate, empirical urban study, and research-led teaching on the practices of shaping space, cities and regions. Today the very international and interdisciplinary staff profile and student body are evidence of the distinctive reputation UCL and The Bartlett School of Planning have garnered worldwide, and testament to our commitment to excellence in planning-related education and research.

Part of a large multi-disciplinary built environment, the School is research-led, where students are taught by staff from a diverse range of academic backgrounds who are actively engaged in shaping the theories and debates covered in their teaching. The School possesses a broad range of staff, with expertise in planning, geography, design, sustainability, economics, sociology, real estate, and politics, and a healthy balance of experienced and younger academics. Our research work makes contributions to both the academic physical and social sciences, and we ensure that our outputs can be interpreted for both an academic and practice audience. Members of staff are committed to working in partnership with policy and practice communities to develop innovative ideas for implementation in industry and government. We make links between theory, policy and practice, relating to planning and development in London, throughout the UK, and through a range of international collaborative links. The School's staff have a reputation for setting agendas through their regular book publications and other research outputs.

The Bartlett School of Planning offers a unique hands-on learning environment for students, involving interaction with some of the leading urban planning academics and practitioners, through close supervision, creative project work, and teaching innovation. These are the features that distinguish the School's teaching programmes within the planning field internationally. Through our professionally accredited undergraduate, taught Masters and Doctoral programmes, students learn in a creative and highly stimulating environment about the form, planning, design and management of cities and about how to shape their future.

We continue to develop closer links to external agencies and professions as part of our knowledge, research and profiling work. There has never been a more important time for planning in the context of globalisation, economic unevenness, social exclusion, global warming, urban deterioration and increased mobility, and the School is committed to analysing and understanding the challenging tasks that lie before us. We want to ensure that our graduates are at the forefront of these discussions and are able to offer ideas and solutions that will serve a useful purpose in emerging research, and professional and governmental debates, in both the developed and developing world.

The School hosts a number of regular seminar series, which attract high profile speakers from all over the world. The seminars series are the London Planning seminars, the China Planning Group seminars, the OMEGA Centre seminars, and we also host The Bartlett School of Planning Public Lecture Series and an annual Sir Peter Hall lecture.



All our MSc programmes are accredited by the Royal Town Planning Institute (RTPI) and/or the Royal Institution of Chartered Surveyors (RICS). Professional accreditation provides a route into chartered professions, which is required for a number of career pathways in the planning, real estate and built environment spheres.



### RTPI

The RTPI is the UK's leading planning body for spatial, sustainable and inclusive planning and is the largest planning institute in Europe with over 23,000 members. It has reciprocal membership agreements with other planning professional bodies in a number of Commonwealth countries.

If you do not have an RTPI accredited undergraduate degree, successfully completing the following of our MSc programmes (as a full MSc rather than a PG Diploma\*) will make you eligible for 'licentiate' membership of the RTPI:

- MSc International Planning
- MSc Spatial Planning
- MSc Urban Design and City Planning
- MSc International Real Estate and Planning  
*(only if module BENVGTC1 and either BENVGPL5 or BENVGPL6 are taken as the electives)*
- MSc Urban Regeneration  
*(only if module BENVGTC1 and either BENVGPL5 or BENVGPL6 are taken as the electives)*
- MPlan City Planning

If you hold an RTPI accredited undergraduate degree, then successful completion of the following of our MSc programmes (as either a full MSc or as a PG Diploma\*) will make you eligible for 'licentiate' membership of the RTPI:

- MSc Housing and City Planning
- MSc International Real Estate and Planning
- MSc Infrastructure Planning Appraisal and Development
- MSc Sustainable Urbanism
- MSc Transport and City Planning
- MSc Urban Regeneration

### RICS

The RICS is the world's leading professional body for setting standards in the surveying industry. Members work across the field of chartered surveying, property, real estate, land, construction and related environmental issues.

Successful completion of the following of our MSc programmes (as a full MSc rather than a PG Diploma\*) will make you eligible for graduate membership of the RICS:

- MSc Housing and City Planning
- MSc International Planning
- MSc International Real Estate and Planning
- MSc Infrastructure Planning Appraisal and Development
- MSc Spatial Planning
- MSc Sustainable Urbanism
- MSc Urban Design and City Planning
- MSc Urban Regeneration
- MPlan City Planning

### JBM

The Joint Board of Moderators (JBM) is the accreditation board formed by the Institution of Civil Engineers, the Institution of Structural Engineers, the Chartered Institution of Highways and Transportation, and the Institute of Highway Engineers, who together represent some 100,000 of the world's leading professional engineers.

Accreditation by the JBM has been confirmed for MSc Infrastructure Planning, Appraisal and Development as a result of the programme meeting the further learning requirements for students who have completed undergraduate studies in an approved engineering school. This will enable engineering graduates to satisfy the academic requirements for Chartered Engineer status and corporate membership of either of the four institutions.

\* All our MSc programmes can be studied as either a full MSc (180 credits, including a dissertation or personal project, studied for a full calendar year from September to September) or as a Postgraduate Diploma (120 credits, includes all taught modules as for the MSc but excludes the dissertation or personal project and is studied from September to June).



# Courses

---

## 06 MSc Spatial Planning (SP)

This programme provides a general introduction to planning theories, systems and cultures with a focus on the importance of taking a spatial perspective and on UK practice.

---

## 08 MSc International Planning (IP)

For students who want an international perspective on planning systems and cultures or are likely to work outside the UK after their studies.

---

## 10 MSc Urban Design and City Planning (UDCP)

This programme offers a unique focus on urban design as a creative planning tool and the interface between urban design and city planning.

---

## 12 MSc International Real Estate and Planning (IREP)

A unique opportunity for students to focus on the relationship between real estate, property development and urban planning systems from a global perspective.

---

## 14 MSc Urban Regeneration (UR)

Globally distinguished theorists and practitioners offer you hands-on multidisciplinary education on one of the built environment's greatest challenges: urban decline and the planned renaissance of our cities.

---

---

## 16 MSc Housing and City Planning (HCP)

An interdisciplinary perspective on the 'housing question,' examining housing development from political, planning, design and project management perspectives.

---

## 18 MSc Infrastructure Planning Appraisal and Development (IPAD)

An interdisciplinary programme, providing a critical perspective on the infrastructure theory and international practice for major and nationally significant infrastructure.

---

## 20 MSc Sustainable Urbanism (SU)

Rapid urbanisation and its impact on the environment and society is one of the biggest challenges facing us today.

---

## 22 MSc Transport and City Planning (TCP)

A critical and interdisciplinary perspective on transport planning, with an urban and international focus, and as part of the development of the sustainable city.

---

## 24 MPlan City Planning (CP)

A two year programme providing students with the knowledge, theory, skills and values required to become effective professional planners in both the UK and internationally.

---

## 28 MRes Inter-disciplinary Urban Design (IUD)

Allows students to construct their study in a cross-disciplinary manner and explore urban design as a critical arena for advanced research and practice.

---

## MSc/PGDip Spatial Planning

This professionally accredited postgraduate programme has been carefully designed as a 'fast-track' conversion course for graduates of any discipline who wish to make a career in planning or in related fields. It aims to broaden students' appreciation of planning and urban theory whilst providing them with the necessary skills to engage in critical and creative problem solving. The course focuses primarily on the tradition and current practices of city and regional planning in the United Kingdom.







## MSc/PGDip International Planning

The International Planning MSc is a one-year full-time professionally accredited planning programme, which is accredited by the Royal Town Planning Institute (RTPI) and the Royal Institution of Chartered Surveyors (RICS). It is intended for students who want an international perspective on planning systems and cultures, or are likely to work outside the UK after their studies. It is open to graduates of any discipline who wish to make a career in planning or related fields.



Overview

The MSc International Planning provides a strong international and comparative focus on planning and urban theory and practice. It aims to provide students with a broad range of skills and knowledge in planning and urban theory in a global context, while offering them the opportunity to develop a specialisation. It provides an initial education in planning, with an international focus, and offers a mix of lecture and seminar-based modules, project work, site visits and the preparation of a 10,000 word dissertation.

The programme will help the student develop critical thinking beyond regulatory considerations, and embraces wider social, economic, environmental and political concerns.

More specifically, the MSc International Planning will:

- give students a critical appreciation of the commonalities and differences among a variety of national planning approaches and systems
- enhance understanding of planning as a culturally specific, context dependent activity which takes different forms in different countries and regions of the world
- raise awareness of the impacts of processes of globalisation on planning
- give students the opportunity to study the planning system, policies and practices of a particular country in depth through an International Planning Project and through their individual dissertation.

The international scope of the MSc primarily encompasses Europe, North America, Australia, South Africa and the Far East, and increasingly China and South-East Asia. Less emphasis is put on the urban development issues and planning systems of

developing countries of the Global South (e.g. Africa and Latin America) as there is specific expertise and dedicated MSc programmes offered in the Development Planning Unit, another part of The Bartlett Faculty at UCL.

Structure/Content

The programme can be completed in either 1 year of full-time study or in 2 to 5 years of modular/flexible study (which can be structured around your employment).

The core modules are:

- BENVGPL6 Comparative Planning Systems and Cultures (15 credits)
- BENVGPL9 Critical Debates in International Planning (15 credits)
- BENVGPLC Urban Design: Place-making (15 credits)
- BENVGPLG International Planning Project (15 credits)
- BENVGPL4 Pillars of Planning (15 credits)

The specialisms are (students pick one specialism, which comprises two linked modules of 15 credits each):

- Communities and planning (BENVGPLJ + BENVGPLK)
- Housing (BENVGPLE + BENVGPLF)
- Infrastructure planning (BENVGMP1 + BENVGMP4)
- Smart Cities Theory and Practice (BENVGSC1 + BENVGSC3)
- Sustainable governance (BENVGSU7 + BENVGSU8)
- Urban design (BENVGTC2 + BENVGTC4)
- Urban regeneration (BENVGUR6 + BENVGUR4)

Dissertation:

BENVGPL7 Dissertation in Planning (60 credits)  
In the final term, students are required to prepare a dissertation of around 10,000 words, relating closely to the specialist option chosen by the student, and linked to international planning. Submission of the dissertation is required by the end of the year, or the end of the final year if taken on a flexible/modular basis.

Field Course

All students joining the International Planning MSc will participate in a short field trip in Term 2 of their first year. The trip will be based in a European city outside the UK and will link directly to the International Planning project which students have to prepare in Term 2.

Entry Qualifications

Applicants must have obtained a minimum of a good second-class Bachelor's degree or other qualification of equivalent standard (preferably 2.1 or higher, but 2.2 with appropriate experience or equivalent will also be considered). Some practical experience in addition to academic qualifications is welcomed but not required (the course is designed for graduates of all disciplines and those with no planning background at all, as well as welcoming those with some experience).

A high level of competence in both spoken and written English is also required. Overseas students whose first language is not English will be asked to provide evidence of competency in English. A minimum overall IELTS score of 6.5 with a minimum of 6.0 in each of the sub-tests is required.

Careers

International Planning graduates have been very successful in gaining subsequent employment in various sectors. At present, there is a growing demand for our graduates from a wide range of both public and private employers in the UK and abroad. They are employed in both local and central government internationally, in global planning related consultancies, and in a wide range of other related sectors, such as housing, transport and urban regeneration, as well as in public and private utility companies, teaching and research.

Term 1 Oct-Dec	Term 2 Jan-Mar	Term 3 Apr-May	Summer Jun-Sep
BENVGPL6 (PT yr 1) Comparative Planning Systems and Cultures	BENVGPL9 (PT yr 1) Critical Debates in International Planning	BENVGPL7 (PT yr 2) Dissertation in Planning	
BENVGPLC (PT yr 1) Urban Design: Place-making	BENVGPLG (PT yr 1) International Planning Project		
BENVGPL4 (PT yr 2) Pillars of Planning			
(PT yr 2) Specialism Part 1	(PT yr 2) Specialism Part 2		



## MSc/PGDip

# Urban Design and City Planning

This is a Masters programme with an innovative focus on urban design as a creative planning tool and the interface between urban design and city planning. Students will gain a good understanding of the interface between the two subjects, and as such develop the ability to think in critical, creative and analytical ways across the different scales of the city, from strategic to local, and across urban design, planning, real estate and sustainability arenas. This masters course builds upon a recognised long-term urban design research specialisation of The Bartlett School of Planning. This is a unique urban design programme offering a comprehensive understanding and exposure to both theory and practice across two closely related disciplines that only together can address the full complexity of the 21<sup>st</sup> century's greatest urban challenges.



## Overview

This programme stresses the vital importance of planning as a creative, positive and propositional force for good, and of urban design as a discipline within which the physical shaping of places is accompanied by an equal concern for their economic, social and environmental well-being. More specifically it will equip those wanting to work in the urban design, planning and development sector in the UK, Europe and internationally with the necessary skills, knowledge and aptitudes to become creative, problem-solving professionals, and, across urban scales to address the complex urban challenges of our age. It is designed for those with an initial training in planning, architecture, landscape architecture, urban design, real estate, or other allied disciplines and who wish to expand or complete their professional education. It is equally suited to those with professional experience and those with none.

As well as a focus on the nature and purpose of urban design and planning, this unique programme exposes students to urban design as both a direct (project-based) and indirect (policy and guidance-based) discipline, to the critical interfaces between urban design and real estate and urban design and sustainability, to project work across scales (strategic to local), to theoretical debates and problematics, and practical and professional design, planning and graphics skills, and to the importance of research within the planning / urban design field.

## Structure/Content

The programme can be completed in either 1 year of full-time study or in 2 to 5 years of modular/flexible study (which can be structured around your employment).

The programme comprises the following modules:

- BENVGPD5 City Planning (15 credits)
- BENVGPD3 Collaborative City Planning Strategies (15 credits)
- BENVGPD2 Urban Design: Place Making (15 credits)
- BENVGPD2 Critical Debates in Urban Design and City Planning (15 credits)
- BENVGPD1 Design and Real Estate (15 credits)
- BENVGPD4 Sustainable Futures by Design (15 credits)
- BENVGTC2 Urban Design: Layout, Density and Typology (15 credits)
- BENVGTC4 Urban Design: Guidance, Incentive and Control (15 credits)
- BENVGPL7 Dissertation in Planning or BENVGSU4 Personal Project in Planning (60 credits)

## Field Course

All students joining the Urban Design and City Planning MSc will participate in one field trip. In Term 2, there is a week-long field trip to a European city outside the UK, for example Barcelona, Hamburg, Copenhagen, Stockholm or Amsterdam. The trip will cover a range of urban design versus development and sustainability themes, linking directly to the Masters programme.

## Entry Qualifications

Applicants must have obtained a minimum of a good second-class Bachelor's degree or other qualification of equivalent standard (preferably 2.1 or higher, but 2.2 with appropriate experience or equivalent will also be considered). Some practical experience in addition to academic qualifications is welcomed but not required. The programme is primarily directed at those with an initial training in planning, architecture or other allied disciplines.

A high level of competence in both spoken and written English is also required. Overseas students whose first language is not English will be asked to provide evidence of competency in English. A minimum overall IELTS score of 6.5 with a minimum of 6.0 in each of the sub-tests is required.

## Careers

Graduates are employed in urban design and planning or in planning-related jobs; their employers range from private consultancies to local authorities. An increasing proportion (over a third) of graduates enter urban design consultancy work, whilst others go onto work on the development sectors, the public sector or non-profit organisations. A smaller group continues higher degree studies and PhD research. The programme maintains a good connection with graduates who are in practice in public and private offices in the UK and abroad in urban design and planning. Among the employers of our recent Bartlett graduates are: ARUP, TfL, Publica, PLP Architecture, Populous, Croydon Council, WYG Planning & Environment, Gallions Housing association, Bioregional, Foster and Partners, Urban Initiatives and Movement, etc.

	Term 1 Oct-Dec	Term 2 Jan-Mar	Term 3 Apr-May	Summer Jun-Sep
City planning	BENVGPD5 (PT yr 1) City Planning	BENVGPD2 (PT yr 1) Critical Debates in Urban Design and City Planning	BENVGPL7 (PT yr 2) Dissertation in Planning or BENVGSU4 (PT yr 2)	
Integrative thinking	BENVGPD3 (PT yr 1) Urban Design: Place-making	BENVGPD3 (PT yr 1) Collaborative City Planning Strategies	Personal Project in Planning	
Delivering quality	BENVGPD1 (PT yr 2) Design and Real Estate	BENVGPD4 (PT yr 2) Sustainable Futures by Design		
Planning for quality	BENVGTC2 (PT yr 2) Urban Design: Layout, Density and Typology	BENVGTC4 (PT yr 2) Urban Design: Guidance, Incentive and Control		



## MSc/PGDip

# International Real Estate and Planning

This programme offers a unique opportunity for students to focus on real estate and on property development processes and their relationship with urban planning systems. It explores market mechanisms and urban planning from the standpoint of investors, developers, occupiers of buildings and policy makers, and the relationship between markets and policy at various levels, equipping students with an understanding of the variations in planning and real estate practices across national boundaries and with the theoretical and practical apparatus to apply their knowledge internationally.





## Overview

The programme aims to equip students with theoretical and practical preparation to practice across international boundaries in the fields of planning and urban policy, real estate market analysis and property development. It draws students from a variety of professional and academic backgrounds who wish to acquire or develop their knowledge in those fields. Students in past years include graduates and professionals from urban planning, architecture, economics, estate management, surveying, sociology, political science, civil engineering, business studies, law and management. Their nationalities cover more than 20 countries from all 5 continents. What unifies the diverse group of people attending the course is their passion for the topic of real estate and urban planning and their keenness to engage with and affect real estate practices and the development of cities.

The programme covers both disciplines of real estate and urban planning: real estate appraisal and valuation, basic principles of real estate as investment asset, the economic and institutional structures of property development, the relationship between real estate development and planning and regulatory mechanisms at city and project level and international variations in that relationship. Elective courses allow students to complement the core knowledge offered by the programme to suit their individual interests. Teaching is based on our in-depth academic and professional understanding of the issues, delivered in various formats (lectures, seminars, project work, tutorials, workshops, field trips).

## Structure/Content

The programme can be completed in either 1 year of full-time study or in 2 to 5 years of modular/flexible study (which can be structured around your employment). Timetables for core courses are arranged so that part-time students can normally attend on one day per week during the teaching terms, depending on the elective courses chosen.

The components of the programme are:

- BENVGEPA Planning Practices in Europe (15 credits)
- BENVGEPC Comparative Urban Projects (15 credits)
- BENVGEPE Real Estate Development (15 credits)
- BENVGEPB Critical Debates in Real Estate and Planning (15 credits)
- BENVGEP3 Real Estate Appraisal (15 credits)
- BENVGEP4 Real Estate Investment (15 credits)
- Elective / optional module(s) (30 credits in total)
- BENVGPL7 Dissertation in Planning (60 credits)

Students seeking RICS membership can select the 30 credits of elective postgraduate modules from any offered as elective modules at UCL, or even outside UCL in other University of London institutions. The choice of these electives must be approved by the Course Director.

Students seeking RTPI membership are required to take the following modules in place of the 30-credit elective work:

- BENVGTC1 Planning Practice (15 credits)
- And, a choice of one of the following two modules:
- BENVGPL5 Spatial Planning: Concepts and Context (15 credits)
  - BENVGPL6 Comparative Planning Systems and Cultures (15 credits)

## Field Course

We are committed to combining rigorous teaching with field experience of actual real estate and urban planning projects. All students in the programme participate in a field trip to mainland Europe in mid-February. The field trip combines talks from key local practitioners and academics with visits to on-going projects, and students find them a great educational and social experience. Recent destinations include Brussels, Amsterdam, Athens, Turin, Hamburg, Berlin and Madrid.

## Entry Qualifications

Applicants must have obtained a minimum of a good second-class Bachelor's degree or other qualification of equivalent standard (preferably 2.1 or higher, but 2.2 with appropriate experience or equivalent will also be considered). Some practical experience in addition to academic qualifications is welcomed but not required (the course is designed for graduates of all disciplines and those with no real estate or planning background at all, as well as welcoming those with some experience).

A high level of competence in both spoken and written English is also required. Overseas students whose first language is not English will be asked to provide evidence of competency in English. A minimum overall IELTS score of 6.5 with a minimum of 6.0 in each of the sub-tests is required. All applicants are normally expected to have a good grounding in at least one language in addition to English.

## Careers

Graduates of this programme who were not already employed have taken jobs in public and private offices in the UK and abroad in real estate and planning. First destinations for recent graduates have included: CBRE, Savills, Investment Property Databank, Tarmac, Jones Lang Lasalle, Knight Frank, BNP Paribas and Tibbalds Monro in London; OECD Urban and Environmental Directorate, IAURIF, Hammerson SA, DTZ and Matthews and Goodman in Paris; King and Co in Barcelona; Kolpron of Berlin; Savills in Greece; SEB Asset Management in Frankfurt; and a large number of smaller private companies in real estate across the world.

Term 1 Oct-Dec	Term 2 Jan-Mar	Term 3 Apr-May	Summer Jun-Sep
BENVGEPA Planning Practices in Europe	BENVGEPC Comparative Urban Projects	BENVGPL7 Dissertation in Planning	(PT yr 2)
BENVGEP3 Real Estate Appraisal	BENVGEP4 Real Estate Investment		
BENVGEPE Real Estate Development	BENVGEPB Critical Debates in Real Estate and Planning		
Elective A	Elective B		

## MSc/PGDip Urban Regeneration

The MSc in Urban Regeneration was created in response to a great challenge facing Britain and the world: urban decline and the planned renaissance of our cities. The challenge is greater than restoring and rebuilding the physical fabric. We need to provide a new economic base to replace the one that has been lost, to restore hope to communities that have been shattered and to provide urban citizens with a better quality of life.



Overview

The MSc in Urban Regeneration combines inputs from globally distinguished theorists and practitioners to offer hands-on, multidisciplinary education drawing on the best of UK and international experience. Urban Regeneration is a massive task that requires 'out of the box' thinking, intellectual rigour, collaboration and contributions from disciplines like urban design, urban planning, sociology, economics, finance and management.

The aim of the programme is to equip you with three important qualities necessary if you, as an urban professional, wish to engage with the challenges of urban regeneration:

- the ability to understand and critically analyse complex urban issues
- the boldness to address those issues in a creative, strategic manner
- the confidence to propose appropriate and realistic implementation plans

The programme draws students from a variety of academic backgrounds: urban planning, economics, architecture, sociology, anthropology, political science, civil engineering, art studies, history & the humanities, management, as well as professionals with design, property, administrative, business, housing and community experience. Past students have hailed from more than twenty countries across all five continents.

This diversity will foster your ability to co-operate and negotiate creatively with others. What unites the diverse group of people attending the course is their passion and enthusiasm to engage with and affect the course of urban transformations.

Structure/Content

To graduate from the programme you will need to take and pass 180 credits (120 for the Diploma). More specifically, you will take six modules of core studies (6x15=90 credits) and another 30 (2x15) credits of elective courses to develop your own particular interests. You will also write a dissertation (60 credits). The table below indicates the programme structure for each term.

Term 1 Oct-Dec	Term 2 Jan-Mar	Term 3 Apr-May	Summer Jun-Sep
BENVGUR6 Urban Problems and Problematics	BENVGUR2 Development Projects	BENVGPL7 Dissertation in Planning	(PT yr 2)
BENVGPLC Urban Design: Place Making	BENVGUR4 Preparing Re-generation Projects		
BENVGUR5 Implementing Re-generation Projects	BENVGUR9 Critical Debates in Urban Regeneration		
Elective A	Elective B		

Depending on which electives you choose you can pursue:

- (a) the RTP1 stand-alone accreditation route. You will need to take BENVGTC1 Planning Practice and either BENVGPL5 Spatial Planning: Concepts and Context or BENVGPL6 Comparative Planning Systems and Cultures as electives.
- (b) the liberal studies route. You can select electives from a wide range of modules taught throughout The Bartlett School of Planning, the Faculty of the Built Environment, UCL and the London Business School. Indicatively, these may include modules on economic development, the Global South, urban sociology, politics, the environment, sustainability and management.
- (c) the specialisation route. You can choose a specialism from those offered in The Bartlett School of Planning such as sustainability, real estate, housing, international planning, transport, urban design etc.

The programme can be completed in either 1 year of full-time study or in 2 to 5 years of modular/flexible study. We make every effort to bundle teaching for the core modules so that part time students could attend lectures on one day per week. Our ability to offer this, is subject to timetabling and venue availability restrictions. Individual modules may also be taken as CPD elements.

In addition, the programme offers optional seminars on making films about the built environment (usually combined with the field trip and/or the BENVGUR4 module) as well as the opportunity to join regeneration workshops and internship schemes with academic and professional partner organisations in the UK and overseas. Please check the programme webpage for up to date information on the latest opportunities available.

Field Courses

The programme combines rigorous teaching with field experience of actual regeneration projects. As a student you can participate, free of charge, in the field trip to mainland Europe (Term 2), the Regeneration Away Day (Term 1) and in several UK site visits. These activities combine talks from key local stakeholders with visits to regeneration projects and workshops dealing with actual regeneration challenges. Students find them to be rewarding educational and social experiences. Recent field trip destinations include Paris, Amsterdam, Athens, Turin, Hamburg, Madrid and Düsseldorf/The Ruhr Region.

Entry Qualifications

You are welcome to apply if you have a keen interest in urban issues and would like to make a difference for yourselves, your employers and the communities you will engage with as urban professionals. Applicants must have obtained a minimum of a good second-class Bachelor's degree or other qualification of equivalent standard (preferably 2.1 or higher, but 2.2 with appropriate experience or equivalent will also be considered). Some practical experience in addition to academic qualifications is welcome but not required (the course is designed for graduates of all disciplines and those with no planning background at all, as well as welcoming those with some experience). A high level of competence in both spoken and written English is also required. Overseas students whose first language is not English will be asked to provide evidence of competency in English. A minimum overall IELTS score of 6.5 with a minimum of 6.0 in each of the sub-tests is required.

Careers

After you graduate you could take jobs in a wide variety of public, private and third sector organisations in the UK and around the world, dealing with urban planning and regeneration issues: private consultancies, Local Authorities, real estate firms, NGOs, Housing Associations and local, regional or national agencies.

- First destinations of recent graduates include
- Foster & Partners: Urban Strategist
  - Regeneris Consulting: Research Consultant
  - Fudan University Urban Planning and Architectural Design Institute (Shanghai): Planner
  - Santiago (Chile): Freelance Planning and Regeneration Consultant
  - Municipal Art Society of New York: Project Manager
  - Savills: Graduate Planner
  - Circle Anglia Housing Association: Business Growth Communications Manager
  - Colombian Green Building Council: Technical Director
  - BuroHappold Engineering/Cities: Consultant



## MSc/PGDip

# Housing and City Planning

Shelter is one of the most basic human needs. But the provision of that shelter – that is, the development of enough housing of the right type and quality, in the most appropriate locations – is a challenge that many nations struggle with. This MSc offers an inter-disciplinary perspective on the ‘housing question’ in advanced economies, based on a programme with core contributions coming from The Bartlett School of Environment, Energy and Resources.



Overview

Planning systems do not always direct new housing to the right places; and the old housing that societies inherit – or even the new housing that is being built – is seldom as good as it could be. The quality of housing development needs to be judged against several key benchmarks. It needs to be part of the solution to the environmental challenges that all societies face and it needs to be delivered in a way that contributes to achieving social justice, by being accessible and affordable.

The Housing and City Planning MSc brings together these critical perspectives in three linked streams, examining how planning policy and practice contributes to the wider environment for development; how housing development is financed and managed; and how new housing may have a lighter environmental footprint, and older housing retrofitted to lessen its impact. The programme develops core knowledge and key skills within each of its streams.

The programme is directed at urban professionals and graduates from the fields of planning, property, architecture and project management who are looking to specialise in the area of housing development. The opportunity is available to study full-time or on a flexible/modular basis. Domestic and international applications are encouraged. The curriculum covers UK-specific policy and practice as well as a range of international case studies and globally-relevant debates in the provision of housing.

Structure/Content

Further details on all modules are provided in the directory at the rear of this brochure. The core modules are:

- BENVGPLE Planning for Housing: Process (15 credits)
- BENVGPLF Planning for Housing: Project (15 credits)
- BENVGEEH Principles of Sustainable Housing Design (15 credits)
- BENVGEEE Low Energy Housing Retrofit (15 credits)
- BENVGHD2 Economics and Finance of Housing Projects (15 credits)
- BENVGHD1 Management of Housing Projects (15 credits)
- BENVGPL7 Dissertation (60 credits)

Students may then pick from a wide-range of optional modules from across, and beyond, The Bartlett School of Planning. The choice of these electives must be approved by the Course Director. Students wishing to gain RTP1 accreditation, however, must take the following two modules as their elective choices:

- BENVGPL5 Spatial Planning: Concepts and Context (15 credits)
- BENVGHD3 Critical Debates in Housing Development (15 credits)

There are no stipulations on elective module choice for RICS accreditation.

Field Course

The Housing and City Planning MSc programme includes an integral field trip aimed at giving students the opportunity to observe examples of good (and bad) practice in housing development and housing design.

Field trips involve students being introduced to development projects by local experts, drawn from academia, local government, private enterprise or local politics. The destination of the Housing and City Planning MSc field trip is to be confirmed.

Entry Qualifications

Applicants must have obtained a minimum of a good second-class Bachelor's degree or other qualification of equivalent standard (preferably 2.1 or higher, but 2.2 with appropriate experience or equivalent will also be considered). Some practical experience in addition to academic qualifications is welcomed but not required (the course is designed for graduates of all disciplines and those with no planning background at all, as well as welcoming those with some experience).

A high level of competence in both spoken and written English is also required. Overseas students whose first language is not English will be asked to provide evidence of competency in English. A minimum overall IELTS score of 6.5 with a minimum of 6.0 in each of the sub-tests is required. Applicants may be requested to submit a writing sample.

Careers

Graduate students from The Bartlett have been very successful in gaining subsequent employment. At present there is a growing demand for our Master's graduates from a wide range of both public and private employers in the UK and overseas. Many graduates have taken up posts in local and central government planning; others have moved into planning related consultancies. Past students have found employment in numerous specialist sectors: in housing and transport; planning, urban regeneration and environmental agencies; public and private utility companies; and also in teaching and research. As well as preparing students for careers in planning practice and housing delivery, all of our programmes offer an introduction to research and to key research skills. These skills are developed and tested through completion of a dissertation, which demonstrates the graduate's capacity for independent thinking and working.

	Term 1 Oct-Dec	Term 2 Jan-Mar	Term 3 Apr-May	Summer Jun-Sep
Planning for housing	BENVGPLE (PT yr 1) Planning for Housing: Process	BENVGPLF (PT yr 1) Planning for Housing: Project	BENVGPL7 (PT yr 2) Dissertation in Planning	
Sustainability and design	BENVGEEH (PT yr 2) Principles of Sustainable Housing Design	BENVGEEE (PT yr 2) Low Energy Housing Retrofit		
Economics and delivery	BENVGHD2 (PT yr 1) Economics and Finance of Housing Projects	BENVGHD1 (PT yr 1) Management of Housing Projects		
Elective modules	Elective A (PT yr 2)	Elective B (PT yr 2)		



## MSc/PGDip

# Infrastructure Planning, Appraisal and Development

UCL's Infrastructure Planning, Appraisal and Development MSc programme is unique in preparing students for the major infrastructural challenges ahead both globally and in the UK. The programme covers the critical areas of governance, politics, socio-economic and environmental development, funding, finance and strategic planning, and how sustainable development goals can and should be incorporated in investment decisions. It takes in frameworks and methodologies that bring risk and uncertainty into the milieu of complex decision-making. The programme offers a holistic approach to decision making and problem solving that lead to more robust investment outcomes across a range of infrastructure types, scales, systems and networks, including major and nationally significant infrastructures.





Overview

The programme is inter-disciplinary and international, aimed at developing a critical understanding of the theory and practice of infrastructure planning, implementation and the development associated with it. The MSc investigates questions regarding how ‘successful’ infrastructure developments can be defined from a range of perspectives given the significant and often fast-changing expectations placed upon such investments. It recognises that judgments about project ‘success’ need to be examined against different contexts. With this in mind, the programme aims to arm students with insights, knowledge and skills that will assist them to better plan, appraise and deliver future infrastructure in a manner that is sensitive to the risks, uncertainties and complexities of different contexts be they temporal, cultural or physical.

Originally based on the work of the OMEGA Centre, the programme still draws on the numerous studies undertaken in this field by the Centre and other leading research institutions.

The core learning outcomes of the course include:

- Acquisition of understanding of the fundamental characteristics and key issues of contemporary infrastructure.
- Appreciation of theories and practice of infrastructure planning, appraisal and delivery.
- Understanding of the contribution that such initiatives make to environmental, social, economic and institutional objectives at local, national and global scales.
- Appreciation of the policies, legislative frameworks and market contexts that surround infrastructure development.
- Appreciation of the diversity of stakeholders’ agendas and of interrelationships and tensions between local and national interests.
- Enhanced understanding of the critical issues concerning sustainable infrastructure investment at all scales.

- Attainment of generic skills of strategic planning and risk analysis and management distilled from other disciplines where risk, uncertainty and complexity are at the heart of their planning.
- Grounding in traditional infrastructure planning and appraisal methods and techniques including: Business Case Development, Financial, Economic and Social Cost Benefit Analysis (CBA), Environmental Impact Assessment (EIA), and Social Impact Assessment (SIA).
- Introduction to innovative methods and techniques for infrastructure planning, appraisal and monitoring, including: Stakeholder and Issue Analysis and policy-led Multi Criteria Analysis (PLMCA) that facilitate the transparent trade-off between different project stakeholder priorities, aims and interests in a holistic manner.

Structure/Content

The programme comprises the following modules:

- BENVGMP1 Infrastructures as agents of change
- BENVGMP2 Business cases for infrastructure
- BENVGMP3 Risk, uncertainty and complexity in decision-making
- BENVGMP4 Critical issues in infrastructure funding, financing & investment
- BENVGMP5 Infrastructure policy, planning and consent
- BENVGMP6 Sustainability and major infrastructure investments
- BENVGMP7 Major infrastructure planning practice
- Elective Module (free choice but subject to approval by the Course Director)
- BENVGPL7 Dissertation in Planning

Term 1 <i>Oct-Dec</i>	Term 2 <i>Jan-Mar</i>	Term 3 <i>Apr-May</i>	Summer <i>Jun-Sep</i>
BENVGMP1 Infrastructures as agents of change	BENVGMP4 Critical issues in infrastructure funding, financing & investment	BENVGPL7 (PT yr 2) Dissertation in Planning	
BENVGMP2 Business cases for infrastructure	BENVGMP6 Sustainability and major infrastructure investments		
BENVGMP3 Risk, uncertainty and complexity in decision-making	BENVGMP5 Infrastructure policy, planning and consent		
BENVGMP7 Group Project			
Elective (Can be taken term one or term two, depending on the module chosen)			

Field Trip

Students will have the opportunity to visit a selection of important European mega-infrastructure projects during a one week trip. In this way students will be able to appreciate directly the way different contexts, including cultural, political and institutional, frame infrastructure decision-making in their planning, appraisal and delivery. In recent years students have visited and received specially arranged presentations from a wide range of senior professionals, civil servants and academics regarding:

- France’s High Speed TGV network
- The Amsterdam North South Metro
- The Port of Rotterdam
- The Rotterdam Central Station
- Maeslant Storm Surge Barrier in the Netherlands
- The Brussels Midi Station re-development

Entry Qualifications

Applicants must have obtained a minimum of a good second-class Bachelor’s degree or other qualification of equivalent standard (preferably 2.1 or higher, but 2.2 with appropriate experience or equivalent will also be considered). Entrants from all disciplines will be considered, with preference given to those with work experience in some aspects of infrastructure planning, appraisal and delivery.

A high level of competence in both spoken and written English is also required. Overseas students whose first language is not English will be asked to provide evidence of competency in English. A minimum overall IELTS score of 6.5 with a minimum of 6.0 in each of the sub-tests is required.

Careers

The programme has been conceived to provide enhanced capacity-building opportunities for those currently working in the field of infrastructure development and offer an invaluable grounded qualification for new entrants into the field.

With strong links to industry, government and academia on a global scale, many students have gone on to find placements within the first year after graduation. They have taken up positions in fund management, government, international financial institutions, international cooperation agencies, investment banking, fund management, community development, academia, consulting and the construction industry. A number of graduates have been accepted to undertake PhD studies at UCL and other prestigious institutions.

## MSc/PGDip Sustainable Urbanism

The MSc in Sustainable Urbanism has been designed to bring together urban sustainability theory, policy and design in a ground-breaking programme which is not offered anywhere else in the UK. It targets those interested in a career in built environment related professions with a focus on urban sustainability/sustainable development within a multidisciplinary approach. The programme has an international makeup and welcomes applications from a range of both science and social-science backgrounds including economics, business, property, planning, architecture, design, engineering, sociology, anthropology, political studies etc.



Overview

The MSc in Sustainable Urbanism MSc brings together three critical dimensions of sustainable urbanism:

- Sustainable Thinking: The latest thinking and debates on sustainability, from policy, research and practice perspectives;
- Sustainable places: The study of what this actually means on the ground through the creation of real projects and places;
- Delivering sustainability: A focus on the skills and knowledge required to actually deliver sustainable development.

The programme seeks to impart the necessary skills and knowledge to enable graduates to engage as team leaders but also as team members in the types of large and complex sustainable urban projects that are increasingly being planned across the world. As such, it aims to help fill a major and increasingly obvious skills gap. Graduates will also be equipped to engage in research, policy and regulatory activities relating to the field.

Structure/Content

The diagram below shows the structure of the one-year full-time programme. The programme can also be taken part-time, usually over two years, and flexibly over two to five years. All modules are compulsory with the exception of the 30 credits of elective free choice (Elective A and B), which are a free choice of modules as selected by the student (subject to approval by the Course Director). Part-time students would normally complete modules marked (PT yr 1) in their first year and modules marked (PT yr 2) in their second year.

The components of the programme are as follows:

- BENVGTC5 Sustainable Urban Development: Key Themes (15 credits)
- BENVGSU2 Critical Debates in Sustainable Urbanism (15 credits)
- BENVGPLC Urban Design: Place-making (15 credits)
- BENVGSU3 Sustainable Urban Design (15 credits)
- BENVGEPD Sustainable Property: Valuation, Investment, Development (15 credits)
- BENVGTC7 Sustainable Urban Development: Project (15 credits)
- Two elective modules (30 credits; free choice but subject to Course Director approval)
- BENVGPL7 Dissertation or BENVGSU4 Personal Project in Planning (60 credits)

Field Course

The programme includes an integral field trip to give students the opportunity to observe and consider sustainability in practice. Various overseas urban destinations offering examples of good practice will be chosen, for example Stockholm, Freiburg, Malmö, Copenhagen, Hannover, etc. Site visits, field exercises and guest lectures from built environment professionals, politicians and academics will form the core activities of the field trip.

Entry Qualifications

Applicants must have obtained a minimum of a good second-class Bachelor's degree or other qualification of equivalent standard (preferably 2.1 or higher, but 2.2 with appropriate professional experience or equivalent will also be considered). Some practical experience in addition to academic qualifications is welcomed but not required (the course is designed for graduates of all disciplines and those with no planning background at all, as well as welcoming those with some experience).

A high level of competence in both spoken and written English is also required. Overseas students whose first language is not English will be asked to provide evidence of competency in English. A minimum overall IELTS score of 6.5 with a minimum of 6.0 in each of the sub-tests is required.

Careers

This programme addresses three types of career paths:

- Early career paths for those applicants with no previous work experience who want to specialise further following their Bachelor's degree;
- Consolidating career paths for those applicants with work experience who consider the next step up and/or strengthening their professional portfolio; and
- Alternative career paths for those applicants contemplating a step change in their career path i.e. from a career in business, finance, psychology, economics, engineering, public administration etc to a career in a built environment profession.

Previous graduates have been able to access a number of opportunities due to their ability (gained during the programme) to interact with a range of professions and disciplines. This has included careers in government (local, regional and national), international organisations (UNHabitat, EBRD etc), consultancy (Arup, Aecom, BioRegional, WWF, Future of London etc), design (various planning, engineering and architecture firms) and finance and banking (CSR, infrastructure finance, energy investment etc).

	Term 1 Oct-Dec	Term 2 Jan-Mar	Term 3 Apr-May	Summer Jun-Sep
Sustainable thinking	BENVGTC5 (PT yr 1) Sustainable Urban Development: Key Themes	BENVGEPD (PT yr 1) Sustainable Property: Valuation, Investment, Development	BENVGPL7 (PT yr 2) Dissertation in Planning or BENVGSU4 (PT yr 2) Personal Project in Planning	
Sustainable places	BENVGPLC (PT yr 1) Urban Design: Place-making	BENVGSU3 (PT yr 2) Sustainable Urban Design		
Delivering sustainability	BENVGSU2 (PT yr 2) Critical Debates in Sustainable Urbanism	BENVGTC7 (PT yr 1) Sustainable Urban Development: Project		
Elective modules	Elective A (PT yr 2)	Elective B (PT yr 2)		



# MSc/PGDip

## Transport and City Planning

The MSc in Transport and City Planning provides a social science-based perspective on transport planning, drawing on the latest thinking and debates in transport, urban planning and mega infrastructure project development, as part of the development of the sustainable city.



Overview

The MSc in Transport and City Planning (TCP) provides a ground-breaking, critical and social science-based perspective on transport planning. The programme examines the urban and international context, considering the development of transport planning, in theory and practice. The focus spatially is at the city scale – recognising that more than half of humankind lives in urban areas – and that the city is often where progressive policy-making occurs.

The programme draws on the latest thinking and debates in transport and urban planning, providing an inter-disciplinary consideration of transport planning as part of the development of the sustainable city. Transport is often seen as the ‘maker and breaker’ of cities, yet few, if any, governments in the Global North and Global South have managed to develop transport systems that consistently support attractive city living, both in the urban core and at the suburban edge. The quality of transport systems needs to be judged against several benchmarks – as part of the solution to climate change and the wider environmental challenges that society faces; as a catalyst to the economy and city competitiveness, as a contributor to well-being and quality of life; and delivered in a way that contributes to social justice. These are huge challenges for our future transport and city planners and require new approaches in transport and urban planning.

The aim of the MSc is to equip students to work effectively as transport and planning practitioners, moving beyond the ‘disciplinary silos’ usually found in academia and practice. A key feature of the MSc is its integrative design across disciplines, developing a range of different theories and perspectives, with modules linked by common principles. There are three core themes: (1) urban transport planning, (2) sustainable cities and (3) investing in mega projects.

Structure/Content

The MSc is taken as a one-year full-time or two- to five-year modular/flexible programme. It offers a theory and practice-driven approach which gives students both a conceptual understanding and the skills needed to tackle practical problems, covering the stages of strategy development, analysis and implementation, complex decision-making and project management, and the role of transport in place-making. There are close linkages and shared modules with two other Bartlett School of Planning courses: the MSc in Sustainable Urbanism and MSc in Infrastructure Planning, Appraisal and Development. Core themes are as below:

**Urban Transport Planning:** examines the role and nature of transport planning as part of the delivery of sustainable cities internationally. The context and rationale for transport is explored. *Modules: (1) BENVGTP1 Transport Planning and the City; and (2) BENVGTP2 International Case Studies in Transport and City Planning.*

**Sustainable Cities:** introduces some of the key sustainability debates and literature, developing an understanding of the tensions and synergies between environmental, social and economic objectives. *Modules: (1) BENVGTC5 Sustainable Urban Development: Key Themes; and (2) BENVGTC7 Sustainable Urban Development Group Project.*

**Investing in Mega Projects:** provides a critical review of infrastructure theory, decision-making and international practice. *Modules: (1) BENVGMP1 Infrastructures as Agents of Change; and (2) BENVGMP4 Critical issues in infrastructure funding, financing & investment or BENVGMP6 Sustainability and major infrastructure investments.*

Beyond these core studies, students take 30 more credits (two 15 credit modules) from related areas across the Faculty, such as GIS, data analysis and visualisation via the Centre for Advanced Spatial Analysis (CASA); urban planning with The Bartlett School of Planning

(BSP); international planning and development with the Development Planning Unit (DPU); and quantitative transport analysis with the UCL Centre for Transport Studies (CTS); or indeed wider electives from other departments at UCL.

Field trip

An international field trip of 4-5 days is arranged to selected best practice case study developments in continental Europe. This enables students to explore the way that different contexts – including cultural, political and institutional issues – frame and deliver transport and city planning. Recent destinations have included Freiburg, Tübingen and Stuttgart. The field trip is informed by talks from key experts. There are separate local study trips around London and Oxford or Cambridge, including talks with local experts and the city authorities.

Entry Qualifications

Applicants must have obtained a minimum of a good second-class Bachelor’s degree or other qualification of equivalent standard (preferably 2.1 or higher, but 2.2 with appropriate experience or equivalent will also be considered). Entrants from all disciplines will be considered, with preference given to those with an academic background and/or professional experience in Urban Planning, Geography, Engineering, Transport Planning, or related disciplines. A high level of competence in both spoken and written English is also required. Overseas students whose first language is not English will be asked to provide evidence of competency in English. A minimum overall IELTS score of 6.5 with a minimum of 6.0 in each of the sub-tests is required. For information about the Rees Jeffreys Road Fund MSc transport bursaries programme please see page 29.

Careers

The programme is attractive to candidates who wish to work across disciplines and at the strategic policy development levels; with Urban Planning, Geography, Transport Planning or Engineering graduates, or wider specialists, who see their future work in transport planning as part of the design of sustainable cities.

Graduate students from The Bartlett School of Planning have been very successful in gaining subsequent employment. At present there is a growing demand for our postgraduates from a wide range of both private and public employers, within the transport planning or urban planning professions. Students have gone on to work within international consultancy (we have close links and have worked with many of these, such as Arup, AECOM, CH2M, Atkins, Alan Baxter & Associates); European and central governments; TfL and GLA; TfGM; and indeed metropolitan and city authorities internationally; international investment banks such as the ADB, World Bank, European Investment Bank; civil society and wider lobby groups.

Term 1 Oct-Dec	Term 2 Jan-Mar	Term 3 Apr-May	Summer Jun-Sep
BENVGTP1  Transport Planning and the City	BENVGTC7  Sustainable Urban Development Project	BENVGPL7  Dissertation in Planning	(PT yr 2)
BENVGTC5  Sustainable Urban Development: Key Themes	BENVGTP2  International Case Studies in Transport and City Planning		
BENVGMP1  Infrastructures as Agents of Change	BENVGMP4 or BENVGMP6  Critical Issues in Infrastructure Investments		
Elective A  (Chosen in the first week of term one)	Elective B  (Chosen in the first week of term one)		



# MPlan

## City Planning

This brand new two year postgraduate degree programme starts in September 2017. It will provide students with the knowledge, theory, skills and values required to become effective professional planners in both the UK and internationally. It is distinguished by being the first two year full time Masters in planning in the UK, where the norm is for one year masters programmes. The additional time allows for students to undertake either a period of study abroad learning about planning systems and cultures in a different context, or to spend time in a work placement in London to reflect on the relationship between planning theory and practice. The MPlan City Planning is fully accredited by the Royal Institution of Chartered Surveyors (RICS) and the Royal Town Planning Institute (RTPI).





---

## Overview

The MPlan City Planning is a two-year taught full-time master's degree.

The degree offers home and international students who are graduates of any undergraduate discipline an in-depth, academically informed introduction to the professional practice of planning, with modules responding to the key themes of planning systems and cultures, the pillars of planning, space, place and design, independent research, and the opportunity to further specialise through elective modules.

The MPlan City Planning:

- Provides students with an academically based vocational education in City Planning;
- Equips students with the knowledge, theory, skills and values required to become effective professional planners both in the UK and internationally;
- Offers specialist courses based on the research expertise of the staff in the department;
- Offers a principle and theory driven programme, which gives students both conceptual understanding, and the skills needed to tackle practical problems; and
- Emphasises the importance of a spatial and comparative perspective to City Planning, the need for integrated solutions to planning problems for planning cities and regions, and the need for creative and research based solutions to the management of our built and natural environments.

The degree includes both core modules, providing an introduction to key knowledge, and specialist modules, allowing you to tailor your studies to your interests.

In the second term of the second year of the MPlan, you will have the opportunity to study outside of the UK in one of our partner universities, in which you will take a number of modules in planning and urban studies to the amount of 45 UCL credits. Alternatively, you can take a work placement in the UK. We have signed a number of reciprocal student exchange agreements with high-quality planning departments and schools in a range of universities around the world (all offering modules in English), including the Ecole d'Urbanisme de Paris (France), the Ecole Urbaine de Sciences-Po Paris (France), the Politecnico di Milano (Italy), the Czech Technical University (Prague), the Dortmund University of Technology (Germany), the University of Amsterdam (The Netherlands), KTH Stockholm (Sweden), the University of Melbourne (Australia), the University of New South Wales, Sydney (Australia), and the University of Hong Kong, among others. New student exchange agreements are currently under negotiation with partner universities in the USA and Canada.

Graduates who wish to make a career in planning, related fields (such as housing, urban regeneration, transport planning or urban design), or teaching and/or research.

---

## Structure/Content

The diagram below shows the structure of the two year full-time MPlan programme.

The MPlan City Planning comprises 300 credits and has a modular structure comprising seven compulsory core modules, two optional modules (modules which must be chosen from a prescribed list of four modules), and two elective modules (an open choice from modules offered by the School of Planning, or Centre for Applied

Spatial Analysis, both within the Bartlett Faculty of the Built Environment).

Further details of these modules can be found on our postgraduate modules page.

The programme is designed around a number of key themes which run through the modular structure:

- Planning systems and cultures – students will gain an understanding of the history, culture and practice of city and regional planning in both the UK and in international comparative context;
- The pillars of planning – students will gain an understanding of the key social science pillars of planning knowledge, namely environment, society, economy and politics, and an appreciation of law and legal regulation and rights in relation to the environment and sustainability;
- Space, place and design – students will understand planning's role in place making, the importance of good urban design and the practicalities of spatial plan making;
- Independent study – student research skills will be enhanced through methods workshops and an in-depth dissertation or major project of 15,000 words; and,
- Specialisation – the programme allows students to pick two 15 credit modules whilst at UCL from a wide choice of modules offered by both the School of Planning and the Centre for Applied Spatial Analysis (CASA) relating to various planning specialisms or urban analytics.

These themes continue throughout term two, year two when students will either spend the entire term studying abroad at an international partner institution or in a work placement.

A core principle of the programme is that term two of the second year will either be spent undertaking scholarly study on a Masters level planning programme at an international partner institution (thus developing and embedding the theoretical and contextual planning knowledge learnt through the period of prior study at UCL via international comparison, whilst living in a foreign city for a three month or four month

period) or undertaking applied research as part of an industry work placement with appropriate planning organisations from the private, public and voluntary sectors in and around Greater London (thus developing and embedding the theoretical and contextual planning knowledge learnt through the period of prior study at UCL via reflective practice experience).

Field Courses

Students will undertake two field trips. The first will be a short, two-day trip to a UK city outside London in the Reading Week of the first term of year one. This will allow students to explore issues in regional planning and the UK traditions of planning practice as well as providing an opportunity for students to network within the course cohort.

The second trip will be a longer five-day trip to a European country outside the UK in the Reading Week of the second term of year one. This trip will enable students to explore the way that different contexts - including cultural, political and institutional - frame urban development and planning practice.

Entry Qualifications

A minimum of an upper second-class Bachelor's degree from a UK university or an overseas qualification of an equivalent standard is required.

A high level of competence in both spoken and written English is also required. Overseas students whose first language is not English will be asked to provide evidence of competency in English. A minimum overall IELTS score of 6.5 with a minimum of 6.0 in each of the sub-tests is required.

Careers

Graduate students from the Bartlett have been very successful in gaining subsequent employment.

At present there is a growing demand for our Masters' graduates from a wide range of both public and private employers, in the UK and internationally.

This programme offers students a unique ability to appeal to a wide range of employment opportunities.

Year 1, Term 1 <i>Oct-Dec</i>	Year 1, Term 2 <i>Jan-Mar</i>	Year 1, Term 3 <i>Apr-May</i>	Year 2, Term 1 <i>Oct-Dec</i>	Year 2, Term 2 <i>Jan-Mar</i>	Year 2, Term 3 <i>Apr-May</i>
BENVGPL5  Spatial Planning: Concepts and Context	BENVGTC1  Planning Practice	Exam Period	BENVGPL6  Comparative Planning Systems and Cultures	BENVGCR3  Study Abroad in City Planning	BENVGCR1  Plan Making Studio 1 (Final Workshop)
BENVGPLC  Urban Design: Place Making	BENVGCR1  Plan Making Studio 1		BENVGCR2  Plan Making Studio 2	<b>OR</b>  BENVGCR4  Work Placement in City Planning	<b>and</b>  Exam Period
Elective A  <i>(free choice of BSP or CASA PGT modules)</i>	Elective B  <i>(free choice of BSP or CASA PGT modules)</i>		LAWSG003  Sustainability and Environmental Justice (UCL Laws)*		
BENVGPL4  Pillars of Planning			BENVGCR5  Dissertation in City Planning <i>(including research methods workshop in yr 1, term 3)</i>  BENVGCR6  Major Personal Project in City Planning <i>(Including research methods workshops in year 1, term 3)</i>		

\* - LAWSG003 may occasionally run in term two of year one instead of term one of year two due to lecturer availability. The second elective module will be adjusted accordingly.





## MRes

# Inter-disciplinary Urban Design

The MRes Inter-disciplinary Urban Design (IUD) is a Faculty-wide one-year (or two-year part-time) research degree through which students are able to tap into perhaps the largest concentration of urban design related researchers and professional expertise found anywhere in the world. The programme is designed to allow students to tailor their own learning to their background and future aspirations through an unrivalled choice of 'feeder' courses combined with a major piece of individual research.



## Overview

The MRes Inter-disciplinary Urban Design (IdUD) is a cross-Faculty programme that cuts across the existing post-graduate urban design, urbanism and related programmes from all parts of The Bartlett, and beyond, including from The Bartlett Schools of Architecture, Planning, and Graduate Studies, the Development Planning Unit, from the Department of Geography (Urban Studies) and from the UCL Centre for Transport Studies. It allows students to construct their study in an inter-disciplinary manner and in so doing to explore urban design as a critical arena for advanced research and practice.

This globally unique programme aims to:

- 1 Provide an inter-disciplinary space in which students can examine the challenges of urban design from comparative disciplinary perspectives;
- 2 Expose students to the diversity of urban design teaching and the latest cutting edge research from across The Bartlett and beyond;
- 3 Provide the opportunity for students to conduct a substantial piece of individual urban design research that draws on diverse Inter-disciplinary knowledge; and
- 4 Train students in the use of research methodologies appropriate to the conduct of urban scale research and critically informed urban design practice.

## Structure/Content

The programme has a simple and highly flexible structure. The MRes IdUD consists of three modules amounting to 180 credits.

**BENVGID1: Inter-disciplinary Urban Design** – This module draws from a range of named feeder courses, each of which explores the broad territory of urban design from a different perspective. This ‘black box’ of elements is given shape by students themselves who select components according to their own academic backgrounds and professional experiences so as to further develop their knowledge, skills and aptitudes. Feeder courses include (although are not limited to):

- BENVUD1 History and Theory of Urban Design
- BENVUD2 Strategic Urban Design
- BENVUD3 Detailed Urban Design
- BENVGBU1 Transforming Local Areas: Urban Design for Development
- BENVGBU2 Participatory Process: Building for Development
- BENVGBU8/9 Critical Urbanism Studios
- BENVGAAAD Design as a Knowledge-Based Process
- BENVGAAF Principles of Analytical Design
- BENVGAG Spatial Cultures
- BENVGAAH Spatial Justice
- BENVGAAI Architectural Phenomena
- BENVGAAJ Adaptable Cities
- BENVGAAAL Space Syntax Methodology & Analytical Design
- BENVGAAPEmerging Design Research

BENVGACK Embodied and Embedded Technologies, Cities as Interface

BENGHA2 The Representation of Cities

BENGHA4 Theorising Practices: Architecture, Art & Urbanism

BENVGEEC Environmental Masterplanning

BENVGEEH Sustainable Housing Design

BENVGPD1 Design and Real Estate

BENVGPD2 Critical Debates in Urban Design and City Planning

BENVGPLC Urban Design: Place-Making

BENVGPLD From Strategic Vision to Urban Plan

BENVGSA3 Geographic Information Systems & Science

BENVGSA4 Spatial Modelling & Simulation

BENVGSA5 Knowledge & Power: The Fundamentals of Research

BENVGSU3 Sustainable Urban Design

BENVGTC2 Urban Design: Layout, Density and Typology

BENVGTC4 Urban Design: Guidance, Incentive and Control

T26 Urban Street Planning & Design

URBANG001 Cities, Space & Power

URBNG003 Creative Cities

URBNG005 Public Space & the City

URBNG007 Community Participation in City Strategies

URBNG009 London, Aspects of Change

**BENVGID2: Urban Investigations** – This module exposes students to the series of urban scale research projects being conducted at UCL (and elsewhere) and offers the opportunity to discuss and experiment with the latest urban research methodologies. Students are able to interact with the full range of UCL's urban design active / interested staff and to develop the range of transferable skills expected of MRes students.

**BENVGID3: Urban Design Research Project** – A final module provides students with the opportunity to conduct a major individual research project that explores the nature of urban design as an inter-disciplinary research subject, and as a key dimension of understanding and unlocking complex urban problems. The work takes the form of a 15,000 word thesis or a 10,000 research report and major research-based design proposal.

Please note that as these modules are drawn from across The Bartlett and UCL, descriptions of many are not available at the end of this brochure. Instead they can be found here: [www.bartlett.ucl.ac.uk/planning/programmes/postgraduate/mresInter-disciplinary-urban-design](http://www.bartlett.ucl.ac.uk/planning/programmes/postgraduate/mresInter-disciplinary-urban-design)

Term 1 Oct-Dec	Term 2 Jan-Mar	Term 3 Apr-May	Summer Jun-Sep
<b>Inter-disciplinary Urban Design</b> (75 credits)  A minimum of 75 credits of feeder modules should be chosen from the pre-approved list (or any other module approved by the Programme Director). Ideally these should be selected from at least three different parts of The Bartlett / UCL		<b>Project Proposal</b>	<b>Urban Design Research Project</b> (75 credits)
<b>Urban Investigations (30 credits)</b>			



---

## Field Courses

The programme includes a weekend retreat (currently in Lisbon) and the option to join a further international field trip.

---

## Entry Qualifications

Applicants to the programme will be expected to have a good 2:1 Bachelor's degree (or other qualification of equivalent standard) in a cognate discipline or a relevant masters degree. A high level of competence in both spoken and written English is also required. Overseas students whose first language is not English will be asked to provide evidence of competency in English. A minimum overall IELTS score of 6.5 with a minimum of 6.0 in each of the sub-tests is required.

---

## Careers

With its emphasis on the power of urban design, its belief in inter-disciplinarity, and its use of questioning research methodologies, the programme opens up a range of future opportunities for participants along two primary paths:

- It provides an opportunity for students seeking to further their professional careers, to specialise in urban design, and, even within that broad arena, to engage deeply within a particular research agenda of direct relevance to their future professional practice. In this regard the programme emphasises and imparts an analytical and questioning approach to the professional discipline and to its urban problems that will allow participants to become more incisive and penetrating in their own professional work.
- Second, for students seeking a research or academic career, the MRes provides the ideal training for a PhD and eventually for a move to an academic or other research position. In this regard the MRes can help to both define an appropriate study at PhD level whilst also streamlining the conduct of a PhD itself, through imparting advanced research methods training and, through the preparation of the Urban Design Research Project, providing a direct feed into a future PhD.

The programme is founded on the belief that in urban design a research perspective provides a critical dimension of advanced professional practice whilst better practice is the worthy ultimate goal of good urban research.





Applying and fees  
Scholarships and prizes  
Directory of MSc modules

Before applying, prospective applicants are encouraged to contact the relevant programme's admissions tutor for further information on the programme's structure, content and entry requirements. Applications for all Bartlett School of Planning Masters degree courses should be made online at: [www.ucl.ac.uk/prospective-students/graduate/apply/taught/how-to-apply](http://www.ucl.ac.uk/prospective-students/graduate/apply/taught/how-to-apply)

Generally, applications are considered and decisions on offers of admission are arrived at in the order that applications are received. Therefore, applicants are advised to apply earlier rather than later, as once offers of admission have been issued for all the places available on the course; it is normally no longer possible to issue any further offers.

The UCL admissions procedure normally takes anywhere between four and twelve weeks. The Bartlett School of Planning closes its admissions system in late July each year so that all applications received can be processed, and offers made where appropriate, before the beginning of the next academic year. The deadline for applications for most programmes for September 2016 entry is 29th July 2016, however applicants are advised to check the deadline for the programme of interest online at: [www.ucl.ac.uk/prospective-students/graduate/apply/taught/deadlines](http://www.ucl.ac.uk/prospective-students/graduate/apply/taught/deadlines)

If you have not yet met the academic or English language proficiency requirements then you can still apply. But if you are made an offer of a place, then it will be conditional on you meeting these requirements before the start of the academic year.

If you require a visa to study in the UK, documentation to assist in your visa application cannot be produced until an unconditional offer of admission is made. A conditional offer will delay your Tier 4 visa application, so you should try and obtain your English certification and provide evidence of meeting any academic condition as early as possible. International applicants who require a Tier 4 visa to study in the UK should also take into account that, as well as the time required to complete the UCL admissions procedure, obtaining entry clearance to the UK takes an additional amount of time. Therefore if you require a Tier 4 visa you are strongly advised to make your application to study at UCL before 1st June in the year in which you wish to study.

The fees for each programme differ according to whether the applicant is a UK/EU or Overseas student and whether the programme is being studied on a full-time or modular/flexible (part-time) basis. The fees applicable for each programme are available by visiting: [www.ucl.ac.uk/prospective-students/graduate/fees-funding/](http://www.ucl.ac.uk/prospective-students/graduate/fees-funding/)

There is also information at this web address about typical costs of living in London.

General enquiries about the admissions procedures for any of our Masters programmes may be directed to The Bartlett Faculty Graduate Clerk:

The Graduate Clerk  
The Bartlett  
UCL Faculty of the Built Environment  
Gower Street  
London WC1E 6BT  
United Kingdom

email: [bartlett.pgclerk@ucl.ac.uk](mailto:bartlett.pgclerk@ucl.ac.uk)  
tel +44 (0) 20 3108 9018/9004

## Design resources

### Urban Skills Portal

Following registration students are given free access to The Bartlett School of Planning's Urban Skills Portal (see: <https://extendstore.ucl.ac.uk/catalog?category=3>). This on-line training resource allows students to develop or refine their graphics skills at their own pace and in a self-directed manner prior to formally beginning their degree programme. It covers key graphics, drawing and GIS software as well as presentation techniques more generally.

# Scholarships and prizes

---

## Scholarships and bursaries

UCL offers a range of financial awards aimed at assisting postgraduate students with their studies. For further information on scholarships currently available for students across UCL, please see the following webpage: [www.ucl.ac.uk/prospective-students/scholarships/](https://www.ucl.ac.uk/prospective-students/scholarships/)

In addition, there are a number of sources of funding available specifically for students in The Bartlett School of Planning.

### Bartlett School of Planning Centenary Scholarship

The School of Planning is pleased to announce it is funding six £5,000 scholarships to prospective Masters students holding an offer of a place on an eligible planning Masters programme for the 2017-18 academic year. The awards will be made on the basis of academic merit. Candidates must apply using the application form online at: <https://www.ucl.ac.uk/bartlett/planning/programmes/funding-and-scholarships>.

The scholarships are available to UK and EU students who have applied to study one of the nine eligible degree programmes concerned (City Planning; Housing and City Planning; International Planning; Mega Infrastructure Planning, Appraisal and Delivery; Spatial Planning; Sustainable Urbanism; Transport and City Planning; Urban Regeneration; Inter-disciplinary Urban Design). Full and part-time students will be considered.

### Land Securities Scholarship

These four scholarships, worth £10,000 each, are for prospective Masters students (any MSc). The awards will be made on the basis of academic merit and financial need. Candidates must apply using the application form online at: <https://www.ucl.ac.uk/bartlett/planning/programmes/funding-and-scholarships>.

The applicant must be a UK student holding a full-time offer. This scholarship comes with the opportunity of a two week summer work placement with Land Securities.

### Rees Jeffreys Road MSc Transport Fund

Funding for the MSc Transport and City Planning is potentially available from the Rees Jeffreys Road Fund MSc transport bursaries programme ([www.reesjeffreys.co.uk/](http://www.reesjeffreys.co.uk/)). For the RJRF, applications are sought by early June each year and awards are made in July (up to nine awards at £10,000 each). These are highly competitive. Overseas students are not precluded, but to meet the RJRF charitable objectives, there should be evidence that the applicant intends to remain for a reasonable period working in the UK. Applicants do not apply directly for these awards, but are nominated by the BSP. The Programme Director will put forward two or three of the best applicants where candidates are keen and suitable. Please let Robin Hickman ([r.hickman@ucl.ac.uk](mailto:r.hickman@ucl.ac.uk)) know if you wish to be considered alongside your application.

---

## Prizes

### Bartlett Centenary Course Prize

The best student (based on academic merit) from each degree programme run by The Bartlett School of Planning will be awarded £100 following the annual October examination board.

### Holford Prize

A prize of £500 will be awarded following the annual October examination board for work of outstanding academic merit in the Dissertation or Personal Project in Planning from any MSc programme within The Bartlett School of Planning.

### R.B. Hounsfield Prize In Town Planning and Civic Engineering

A prize of £200 will be awarded following the annual October examination board for work of outstanding merit in transport planning undertaken during the course of any MSc programme within The Bartlett School of Planning.

### RTPI Prize

A prize of £100 will be awarded for a student of academic merit from the MSc International Planning or MSc Spatial Planning following the annual October examination board.

### Sprott Prize

A prize of £1500 will be awarded following the annual October examination board for work of outstanding academic merit in the Dissertation or Personal Project in Planning from any MSc programme within The Bartlett School of Planning



Following is a brief description of each of the modules offered by The Bartlett School of Planning as part of our MSc programmes, along with an indication of which of the programmes they are available to.

Please note that the MRes Inter-disciplinary Urban Design core modules are listed on pages 24-26 as they are not available to students from any other programmes.

## Key to course codes

HCP	MSc Housing and City Planning
IP	MSc International Planning
IREP	MSc International Real Estate and Planning
IPAD	MSc Infrastructure Planning Appraisal Development
SP	MSc Spatial Planning
SU	MSc Sustainable Urbanism
TCP	MSc Transport and City Planning
UDCP	MSc Urban Design and City Planning
UR	MSc Urban Regeneration
CP	MPlan City Planning
IUD	MRes Inter-disciplinary Urban Design

### BENVGCR1

#### Plan Making Studio 1

(30 credits)

This module is a project-based, practice-linked 15 credit module which seeks to bind the new two year MPlan City Planning together through a series of live planning exercises which draw from a broad range of skills. The module will, in essence, be a mixture of lectures, student-led project work and field work. The module will be based upon the urban planning challenges of densification for London (and other cities). The module will run in the second term of the first year of the MPlan, and will be a precursor to BENVGCR2 Plan Making Studio II. Working with our practice based partners, students will work in small teams to produce a masterplan for a major area of redevelopment. The issue of densification will frame the solution for the site in question. Examples of sites include Charlton Riverside, Silvertown and Poplar.

**Availability:** Core for CP only.

### BENVGCR2

#### Plan Making Studio 2

(30 credits)

Following on from Plan Making Studio I in the second term of the first year, this module will augment the skills developed in the team work exercise to develop a city planning project based on the theme of densification. Working individually, students will develop a brief with a client in London then produce and deliver to this brief throughout the term. The module coordinator will assist students in this task. It must reflect the specialism developed by the student throughout their studies.

The project will draw from the Bartlett's excellent and prestigious connections in industry and will allow students to work on live, interesting and challenging work in their field of specialism. The module coordinator will agree a plan for delivery of the project with the student and partner, and supervise this process. On completion of the taught element of the programme, students will return to London in Y2 T3 to present at an event to which staff and our industry partners will be invited. The work will be presented then reviewed by a panel of staff/practitioners.

**Availability:** Core for CP only.

### BENVGCR3

#### Study Abroad in City Planning

(45 credits)

This module to allows credit weighting and recognition for the opportunity students will have to spend a term studying abroad at a school of planning in an international partner institution during the last term of the final year of the MPlan City Planning. The partner institutions have been selected as those providing the highest quality planning education, and those which can give international planning perspectives in a high quality environment. Students will study a number of modules worth the equivalent of 45 UCL masters credits from the partner institution's masters programmes. This will also give the students an opportunity to spend time in an international city, reflecting on the practice of planning in that location. We have existing links suitable for the MPlan City Planning students here:

University of Amsterdam  
University of Dortmund  
Ecole d'Urbanisme de Paris  
Czech Technical University  
KTH Stockholm  
University of Hong Kong  
University of Melbourne  
University of New South Wales, Sydney  
Institut d'Etudes Politiques de Paris (Sciences-Po)

**Availability:** Core for CP only.

### BENVGCR4

#### Work Placement in City Planning

(45 credits)

This module is available as an alternative to BENVGCR3 STUDY ABROAD IN CITY PLANNING for those students who wish to remain in London and gain direct professional experience during their masters programme. This module is to allow credit weighting to be given to students spending a three month period working in practice with selected public, private and voluntary sector planning agencies in and around Greater London. Students will be placed with a vetted institutional partner and whilst undertaking these practice placements, students will be required to produce a piece of research, design or policy work according to the needs of the partner institution, up to the equivalent of 7,000 words.

This work will be produced at the institutional partner but with appropriate engagement from the module coordinator to ensure the selection of appropriate live projects.

**Availability:** Core for CP only.

BENVGCR5

### Dissertation in City Planning

(90 credits)

This is the culmination of the Masters degree programme and an opportunity for in-depth, independent academic study. The first part of the module consists in term three of year one of a series of research method workshops on issues such as methodological selection, ethics and risk, academic writing, common quantitative analysis techniques in the social sciences, surveys, interviews, focus groups, archival research, design based research, GIS based analysis techniques, and academic writing. At the end of this period students will produce a full dissertation proposal. The second, and main, part of the module is then a year long period throughout the summer between year one and year two and the whole of year two of independent, student led research and writing. Students will be allocated a dissertation supervisor at UCL to assist and guide them throughout the process.

**Availability:** Core for CP only.

BENVGCR6

### Urban Planning in China: Frameworks, Practices and Case Studies

(15 credits)

This module aims to provide an understanding of the broad process of China's urbanisation and the urban public administration reform since the 1978 reforms. It seeks to explore Chinese urbanisation in its political and economic context drawing from a range of live urban planning case studies. The module aims to develop students' skills of critical analysis in relation to the politics and governance of urban planning in China, and will seek to reflect upon the significance of these for practice in China and, comparatively, further afield.

**Availability:** Core for CP; open elective for IPAD, IREP, UR, HCP SU and TCP

BENVGEE

### Low Energy Housing Retrofit

(15 credits)

This module investigates in detail, the issues around retrofitting existing homes with insulation and systems to reduce energy consumption. The module considers the Passivhaus methodology in depth also. We teach and use the PHPP software and use it to criticise case study retrofits. The module incorporates at least one site visit, often one of the TSB Retrofit for the future projects. The module is mainly aimed at those with an architectural background and those with some experience of housing projects.

**Availability:** Core for HCP; capped elective for IREP, IPAD, SU, TCP, UR. This module is run by The Bartlett School of Environment, Energy and Resources as part of The Bartlett School of Planning's MSc Housing and City Planning.

BENVGEEH

### Principles of Sustainable Housing Design

(15 credits)

The aim of the module is to introduce students to the latest techniques and research, on how to design, build and operate sustainable housing throughout the world. The module will equip students with a rounded background in the principles of sustainable housing design and will focus on producing new, sustainable housing in different climates. Students will consider what sustainability means, how different climates affect designs and also how to overcome barriers that prevent schemes from becoming successful. The module will be self-contained and be suitable for students from other faculties who need to have a strong theoretical background in this area.

**Availability:** Core for HCP; capped elective for IREP, IPAD, SU, TCP, UR. This module is run by The Bartlett School of Environment, Energy and Resources as part of The Bartlett School of Planning's MSc Housing and City Planning.

BENVGEP3

### Real Estate Appraisal

(15 credits)

This module introduces students to the

foundations of appraisal and equips them with the required knowledge and skills for valuation of different types of property assets. The module covers the nature and scope of valuation; concepts of value, particularly market value; appraisal foundations; role and functions of the valuer; property and the property market; market study and valuation; the valuation process; professional standards and valuation report; and a critique and application of the methods of valuation.

**Availability:** Core for IREP; open elective for HCP, IPAD, SU, TCP, UR.

BENVGEP4

### Real Estate Investment

(15 credits)

This module, which is delivered through a mixture of lectures from academic staff and industry practitioners, introduces students to commercial real estate investment markets. The module will develop knowledge by considering the qualities of real estate as an investment, direct and indirect real estate investments, the global real estate market and cross-border investment, multi-asset portfolios and the role of real estate within them, performance analysis and investment strategies.

**Availability:** Core for IREP; open elective for HCP, IPAD, SU, TCP, UR.

BENVGEPA

### Planning Practices in Europe

(15 credits)

This is a comparative analytical survey of the diversity of actual planning practices and urban outcomes at metropolitan scale across Europe, delivered through lectures, student case study work and small-group discussions.

**Availability:** Core for IREP; capped elective for HCP, IPAD, SU, TCP, UR.

BENVGEPB

### Critical Debates in Real Estate and Planning

(15 credits)

This module aims to provide students with an opportunity for in-depth reading, reflection and critical discussion around key concepts and themes in international real estate and

planning. Through active small-group seminar discussions centred on key readings, students will develop a deeper knowledge of practices and theories associated with the subject matter.

**Availability:** Core for IREP only.

BENVGEPC

## Comparative Urban Projects

(15 credits)

The module focuses on large urban projects, developments and episodes in the major metropolitan regions in the world, including emerging economies as well as cities in Western Europe and North America. It challenges students to analyse the relationship between planning systems, institution of ownership, and market conditions, and seeks to develop frameworks for understanding the genesis and outcomes of urban developments. The module also explores the implications of 'planning by projects' in a comparative perspective, and questions the implications of the recent economic crisis and the sustainability of mega-projects.

**Availability:** Core for IREP; capped elective for HCP, IPAD, SU, TCP, UR.

BENVGEPD

## Sustainable Property: Valuation, Investment, Development

(15 credits)

This module looks at the property, investment and development sectors in the context of the importance of sustainable property development as a goal. It seeks to provide planners with the necessary understanding of development processes, investment rationales and valuation methods for promoting more sustainable urban change. It is delivered through a mixture of lectures, guest speaker presentations, discussions and workshops.

**Availability:** Core for SU; open elective for HCP, IREP, IPAD, TCP, UR.

BENVGEPE

## Real Estate Development

(15 credits)

This module examines the entire development process for the different types of property development and redevelopment. Discussions

cover the development process, development cycles, feasibility analyses, and development financing. Students will gain the knowledge and skills to evaluate the feasibility of, and undertake property development projects that enhance the quality of life and long-term quality of human existence while maximising developers' financial objectives.

**Availability:** Core for IREP only.

BENVGHD1

## Management of Housing Projects

(15 credits)

This module looks at the management of large scale housing projects through the lens of Programme and Project Management. It considers the housing project from conception through to delivery and occupation. Lectures cover the tools and techniques of project management, the critical importance of managing relationships between people and organisations, procurement processes, and how sustainability and design quality can be integrated into the project decision making and delivery process.

**Availability:** Core for HCP; capped elective for IREP, IPAD, SU, TCP, UR.

BENVGHD2

## The Economics and Finance of Housing Projects

(15 credits)

This module examines the housing development process and highlights the economic concepts and financing options and criteria that constrain housing development. Students will learn to identify new housing market opportunities and structure a development financing package that maximizes the developer's objectives.

**Availability:** Core for HCP; capped elective for IREP, IPAD, SU, TCP, UR.

BENVGHD3

## Critical Debates in Housing Development

(15 credits)

A series of small-group discussions examining foundational thinking in planning for housing and recent policy and practice debates. The module is structured around key readings

and debates around emergent planning policy and regulation.

**Availability:** Elective for HCP only.

BENVGMP1

## Infrastructures as Agents of Change

(15 credits)

This module defines the characteristics of infrastructure projects, programmes and plans of various kinds and examines their roles as agents of change. It encompasses an understanding of past perspectives of the role of such investments and investigates 21st Century perspectives in a context of global interdependencies of economic growth and environmental impacts as sustainability concerns loom large as key challenges.

**Availability:** Core for IPAD and TCP; specialism for IP and SP; open elective for HCP, IREP, SU, UR.

BENVGMP2

## Business cases for infrastructure

(15 credits)

This module presents the tools currently employed in the development of business cases for infrastructure projects, programmes and plans. It critically reviews the theory and practice used, drawing extensively on the findings of the OMEGA Centre's international case study research and advisory practice.

**Availability:** Core for IPAD only.

BENVGMP3

## Risk Uncertainty and Complexity in Decision-Making

(15 credits)

This module introduces and critically reviews the treatment of Risk, Uncertainty and Complexity and their relationship with decision-making contexts in infrastructure planning, appraisal and delivery. The module calls on research findings from an examination of decision making in disciplines where risk, uncertainty and complexity are at the milieu of their decision making processes and seeks to transfer lessons learned.



**Availability:** Core for IPAD; capped elective for HCP, IREP, SU, TCP, UR.

BENVGMP4

### **Critical issues in infrastructure funding, financing & investment**

*(15 credits)*

This module focuses on issues that cross all infrastructure sectors in the developed and developing world. It examines challenges seen to be critical to sustainable investments. While not exhaustive, the module examines the: role of PPPs, impacts of corruption, 'Section 106 & Community Infrastructure Levy, Property value uplift & Tax Incremental Financing and impact of fiscal devolution.

**Availability:** Core for IPAD and TCP; specialism for IP and SP; open elective for HCP, IREP, SU, UR with BENVGMP1 as a pre-requisite module.

BENVGMP5

### **Infrastructure policy, planning and consent**

*(15 credits)*

The module reviews the infrastructure consenting regime under the Planning Act 2008 and considers supporting policy and planning guidance. It critically examines the role of environmental, equity and social impact assessments within the regime and proposes new tools for enhanced public consultation and participative decision making.

**Availability:** Core for IPAD only.

BENVGMP6

### **Sustainability and major infrastructure investments**

*(15 credits)*

This module examines the sustainability dimensions and challenges for mega infrastructure investment, arguing that economic growth outcomes alone are an insufficient justification for projects, programmes and plans. The module examines the dimensions and definitions of sustainability, scenario analysis, low carbon infrastructure, regional economic growth, social justice, governance and socio-technical transitions. The module includes lectures,

guest speakers, class presentations and critical debate.

**Availability:** Core for IPAD; open elective for HCP, IREP, SU, TCP, UR.

BENVGMP7

### **Major infrastructure planning practice**

*(15 credits)*

This module offers students an opportunity to role-play client-consultancy decision-making in tackling a 'live case study'. Undertaken in conjunction with parties from practice, it is here that the new knowledge acquired is synthesised, integrated and tested in the context of a live problem-solving team exercise. The aim of the module is to familiarise students with cutting-edge approaches to infrastructure planning and appraisal that offers a more effective and holistic approach to infrastructure planning, appraisal and delivery.

**Availability:** Core for IPAD only.

BENVGPD1

### **Design and Real Estate**

*(15 credits)*

The best examples of British urban regeneration are created by collaboration between the development industry, architects and local planners. Through site visits, presentations and critical interrogation, we learn how this is achieved. Students visit areas of major commercial development in Central London and receive presentations from leading property professionals, architects and planners. The course covers key elements of master-planning, architectural design, real estate and project management, which combine to produce successful development projects in London, a world business city. The module leads to a final group presentation where students demonstrate their ability to analyse an area, propose an initiative for improvement and "sell" their ideas.

**Availability:** Core for UDCP; elective for IUD only.

BENVGPD2

### **Critical Debates in Urban Design and City Planning**

*(15 credits)*

This module provides students with an opportunity for in-depth reading, reflection and critical discussion around key urban design and city planning themes and debates. Students will acquire a deeper knowledge of forms, practices and theories associated with urban design, as well as an integrated view of urban design and its key areas of knowledge.

**Availability:** Core for UDCP only.

BENVGPD3

### **Collaborative City Planning Strategies**

*(15 credits)*

This project-based module, taught through a combination of lectures, tutorials and community events, translates the more theoretical issues of the politics of planning knowledge and strategic planning to a real-life project undertaken through a co-production process with community organisations in London. The projects enable students to work with community organisations and consider design and policy options for delivering inclusive and sustainable development in urban contexts identified for urban intensification.

**Availability:** Core for UDCP; capped elective for HCP, IREP, IPAD, SU, TCP, UR.

BENVGPD4

### **Sustainable Futures by Design**

*(15 credits)*

This module provides students with a holistic approach to all the aspects of sustainability: social, cultural, economic and environmental. Students will reflect on possible sustainable future cities by addressing issues that are currently at the forefront of the debate on urban design and city planning: how to make the city more inclusive, collaborative, consume less resources, interact with nature and, at the same time, strengthen its design and maintain its heritage. The module combines design and theoretical reflection through a series of lectures, workshops and a design proposal.

**Availability:** Core for UDCP; elective for IUD only.

BENVGPD5

## City Planning

*(15 credits)*

This module introduces students to the key issues facing city planners at a time of mass urbanisation, globalisation, technological and climate change. It does so in two ways: studying city planning's theoretical discourse and its practice. It draws on UK and international experience. Topics include demographics, resilience, economic sustainability, planning and urban politics, Big Data, and the preparation and delivery of workable city plans.

**Availability:** Core for UDCP; capped elective for HCP, IREP, IPAD, SU, TCP, UR.

BENVGPL4

## Pillars of Planning

*(30 credits or also available as two 15 credit modules, BENVGPLA+BENVGPLB)*

This module explores the nature of urban change and the political, social, economic and environmental processes and context which give rise to and determine planning issues and policies. The module is delivered through weekly lectures organized in four blocks of five weeks, which introduce key concepts and theories from urban sociology, urban and regional economics, urban environmental management and urban politics of relevance for future planners and built environment professionals.

**Availability:** BENVGPL4 (30 credits) core for CP, SP and IP; BENVGPLA & BENVGPLB (15 credits each) available as open electives for HCP, IREP, IPAD, SU, TCP, UR.

BENVGPL5

## Spatial Planning: Concepts and context

*(15 credits)*

This lecture- and seminar-based module provides an introduction to the history of the UK planning system and to contemporary planning debates. Topics covered include the origins and development of the planning system in the 20th century, the European context, devolution and planning and current debates about localism in England.

**Availability:** Core for CP and SP; open

elective for HCP, IREP, IPAD, SU, TCP, UR.

BENVGPL6

## Comparative Planning Systems and Cultures

*(15 credits)*

This module which is composed of lectures and seminar group discussions examines the different approaches to and systems underlying planning in different national contexts. It covers a number of analytical themes and concrete challenges that potentially are common to different national planning approaches and systems but also seeks to draw out some sense of the uniqueness of various national planning systems.

**Availability:** Core for CP and IP; open elective for HCP, IREP, IPAD, SU, TCP, UR.

BENVGPL7

## Dissertation in Planning

*(60 credits)*

The dissertation is an opportunity for students to develop their research skills and abilities through an in-depth exploration of a particular area of interest pertinent to their MSc. The culmination of the course, the dissertation is a self-managed study based on the gathering and analysis of primary and/or secondary data contextualised by a review of existing literature. A range of research methods will be covered through workshops and lectures and students will be introduced to the research process to aid them in completing the dissertation in planning.

**Availability:** Core for HCP, IP, IREP, IPAD, SP, TCP, UR; students on SU and UDCP must choose between BENVGPL7 and BENVGSU4.

BENVGPL9

## Critical Debates in International Planning

*(15 credits)*

This module, which is delivered through a mixture of lectures and small group seminars, aims to develop students' critical thinking skills in the identification and assessment of emergent and dominant trends and issues in

comparative urbanism and planning from a variety of international contexts. Theoretical, practical and ethical challenges and responses are examined through in-depth discussion of key readings.

**Availability:** Core for IP only.

BENVGPLC

## Urban Design: Place Making

*(15 credits)*

Though a series of lectures, this course gives students an introductory yet comprehensive overview of urban design theory. It develops this understanding and relates it to practice through the completion of a single project in three parts supported by weekly discussions with a studio tutor.

**Availability:** Core for CP, IP, SP, SU, UDCP, UR; open elective for HCP, IREP, IPAD, TCP.

BENVGPLD

## From Strategic vision to Urban Plan

*(15 credits)*

This is a project-based module taught with a combination of lectures, tutorials and community events. It applies the theoretical concepts of spatial planning to a real life project designed and produced in collaboration with community organisations and neighbourhood groups in London. The module provides students with the skills to build evidence, prepare strategic and development management policies and support community engagement for inclusive and sustainable urban development.

**Availability:** Core for SP only.

BENVGPLE

## Planning for Housing: Process

*(15 credits)*

This module comprises ten lectures which examine the politics, processes and planning of housing development in the UK. It begins by examining the drivers of housing demand before looking at the different levels of planning and at planning frameworks. It then

frames an analysis of housing development in the UK within different perspectives on the development process, before looking in detail at key political and planning debates.

**Availability:** Core for HCP; specialism for SP and IP; open elective for IREP, IPAD, SU, TCP, UR.

BENVGPLF

### Planning for Housing: Project

(15 credits)

This module takes a project-based learning approach enabling students to apply and extend their knowledge of development actors, practices and constraints to real-life development opportunities. By providing an opportunity to propose solutions in a 'live project' involving various stakeholders, this project introduces students to the complexities of synthesis and decision making integral to residential development.

**Availability:** Core for HCP; specialism for SP and IP; open elective for IREP, IPAD, SU, TCP, UR with BENVGPLE as a pre-requisite.

BENVGPLG

### International Planning Project

(15 credits)

This project-based module engages students in a practical plan-making exercise. As in an urban laboratory, small groups of students will apply creative problem-solving, develop critical thinking, and integrate analytical skills and knowledge acquired in other modules to produce a 'strategic plan' for the future development of a large-scale urban area in a city outside of the UK. The module is delivered through weekly group tutorials and a field trip to the case-study city.

**Availability:** Core for IP only.

BENVGPLH

### Spatial Planning: Critical Practice

(15 credits)

This module, which is delivered through a mixture of lectures and small group seminars, aims to develop students' understanding of key debates and theories relevant to 'planning practice'. The course is structured around key questions and dilemmas facing UK planners and considers the field as a professional,

peopled process.

**Availability:** Core for SP only.

BENVGPLJ

### Communities and planning: Participatory Urban Planning

(15 credits)

This module introduces students to the concept and context of public participation in planning using lecture and seminar based learning. Students will review the development of public participation in planning and critically assess the concepts and frameworks that shape contemporary practice.

**Availability:** Specialism for IP and SP; open elective for HCP, IREP, IPAD, SU, TCP, UR.

BENVGPLK

### Communities and Planning: Participatory Urban Planning Project

(15 credits)

This module introduces students to the tools available to engage with communities, alongside the successes, challenges and failures of participatory practice. The course will include lectures, seminars, site visits and talks from practitioners and community activists.

**Availability:** Specialism for IP and SP; open elective for HCP, IREP, IPAD, SU, TCP, UR with BENVGPLJ as a pre-requisite.

BENVGSC1

### City Theory

(15 credits)

**Availability:** Specialism for SP and IP; elective for HCP, IREP, IPAD, SU, TCP, UR. This module is run by the Centre for Applied Spatial Analysis as part of their MSc Smart Cities and Urban Analytics.

BENVGSC3

### Smart Cities: Context, Policy and Government

(15 credits)

**Availability:** Specialism for SP and IP; elective for HCP, IREP, IPAD, SU, TCP, UR. This module is run by the Centre for Applied Spatial Analysis as part of their MSc Smart Cities and Urban Analytics.

BENVGSU2

### Critical Debates in Sustainable Urbanism

(15 credits)

This module offers students the opportunity for in-depth reading, reflection and critical discussion around key concepts and themes in sustainable urbanism. Through active small-group seminar discussions centred on key readings students will develop deeper knowledge of practices and theories associated with sustainable urbanism.

**Availability:** Core for SU only.

BENVGSU3

### Sustainable Urban Design

(15 credits)

To achieve sustainable outcomes has now become an accepted best practice norm in nearly all aspects of contemporary life, but what does this mean when it comes to urban design? This course introduces and engages students in the debates of sustainable urban design by working in groups to research and produce a sustainable urban design proposal affecting an area in London. It incorporates many different modes of learning including lectures, plenary sessions, small group tutorials, and a field trip.

**Availability:** Core for SU only.

BENVGSU4

### Personal Project in Planning

(60 credits)

Students are required to demonstrate a capacity for in-depth critical thinking through research. This can take the form of a written dissertation or a major research project. It will draw on available theory/debates, submit them to a critical analysis based on primary and/or secondary data and on a review of the literature, and from this draw conclusions and offer recommendations. For a dissertation the output is purely textual whilst a major research project offers the opportunity to integrate design/project work within the research.

**Availability:** Students on SU and UDCP must choose between BENVGSU4



and BENVGPL7.

#### BENVGSU7

### Governance for Urban Sustainability: Debates

(15 credits)

The module focuses on policy and governance for urban sustainability. It aims to provide an understanding of how broader governance processes for the urban scale can deliver more sustainable outcomes, including an appreciation of the role of different policy instruments and policy integration. The module also aims to develop critical awareness of the politics and governance mechanisms shaping more sustainable cities, through a theoretically-informed exploration of issues and debates surrounding environmental and urban policy at local, national and international scales.

**Availability:** Specialism for IP and SP; open elective for HCP, IREP, IPAD, SU, TCP, UR.

#### BENVGSU8

### Governance for Urban Sustainability: Project

(15 credits)

This module takes the form of a number of live projects, each undertaken by a small group of students. The module operates in collaboration with London local authorities, who will identify a number of urban sustainability-related problems for students to investigate and develop recommendations for tackling, from a 'policy' and 'governance' point of view. The aim is for students to understand the complexities of developing and implementing policies, projects and initiatives for urban sustainability in specific contexts through deploying different governance approaches and policy instruments.

**Availability:** Specialism for IP and SP; open elective for HCP, IREP, SU, TCP, UR with BENVGSU7 a pre-requisite.

#### BENVGTC1

### Planning Practice

(15 credits)

This module provides a forum for students to debate contemporary planning issues with current practitioners from the public, private and non-governmental sectors and an opportunity to critically reflect on the practice of planning. Topics covered include the development of plans and strategies, public participation, planning gain, mediation, development management.

**Availability:** Core for CP; open elective for HCP, IREP, IPAD, SU, TCP, UR.

#### BENVGTC2

### Urban Design: Layout, Density and Typology

(15 credits)

This module provides an opportunity to critically investigate the spatial characteristics and qualities of the built environment, with a focus on layout, density, and typology, and explore the use of different typologies in the development of urban design proposals. This project-based module, which is delivered through a combination of weekly individual/group tutorials and lectures, aims to develop knowledge and a range of skills for carrying out urban design investigations and proposals.

**Availability:** Core for UDCP; specialism for IP and SP; open elective for HCP, IREP, IPAD, SU, TCP, UR.

#### BENVGTC4

### Urban Design: Guidance, Incentive and Control

(15 credits)

This module provides participants with an insight into the purpose, scope, means and effectiveness of 'indirect' urban design processes, namely those operated through public policy and guidance and related processes of incentive and regulation. The major learning tool is a single integrated small group project based around live planning issues in London accompanied by a series of supporting lecture.

**Availability:** Core for UDCP; specialism for IP and SP; open elective for HCP, IREP, SU, TCP, UR.

#### BENVGTC5

### Sustainable Urban Development: Key Themes

(15 credits)

The module examines key sustainability debates and literature, with a specific focus on cities. Its overall aim is to broaden students' understanding of institutional, environmental, social and economic objectives of sustainable urban development and provide a critical discussion of how these manifest in practice, drawing on a range of international and UK-based examples. It is delivered through a mixture of lectures and student seminars.

**Availability:** Core for SU and TCP only.

#### BENVGTC7

### Sustainable Urban Development: Project

(15 credits)

This module aims to apply theoretical concepts of urban sustainability to a real life project by undertaking an inter-disciplinary and applied approach to processes of urban development. It enables students to consider options for achieving environmental, social, economic and institutional sustainability objectives for a specific city/ large urban area, draw on consultants' knowledge of that city/area and, finally, deliver a Strategic Sustainable Urban Plan (SSUP). The module is integrated with the SU Field Trip and is delivered through a mixture of lectures, consultant workshops, studio-based tutorials and student presentations.

**Availability:** Core for SU and TCP only.

BENVGTP1

**Transport Planning and the City***(15 credits)*

This module examines the role and nature of transport planning as part of the development of sustainable cities. The context and rationale for transport is explored, including the policy context, the rise of automobility, concepts of sustainability, urban structure and travel, low carbon travel, psychological and sociological dimensions to mobilities, institutional arrangements and socio-technical transitions. The module includes lectures, guest speakers, class presentations and critical debate.

**Availability:** Core for TCP only.

BENVGTP2

**International Case Studies in Transport and City Planning***(15 credits)*

This module explores the practice of transport planning internationally, particularly in Asia and South America. It examines changing paradigms in transport, including the development of new high speed rail hubs, bus rapid transit systems, emerging modes of transport, paratransit, walking and cycling and appraisal methodologies.

**Availability:** Core for TCP; available as an elective for IPAD.

BENVGUR1

**Planning Discourses for Urban Development in Historic Cities and Neighbourhoods***(15 credits)*

This module is delivered through a mix of lectures, small group seminars and site visits. It aims to develop the students' ability to gain knowledge of the dynamics of changing discourses when planning for urban development in historic urban settings, and to foster critical reflection about the varied dimensions at play in the management of historic cities, the varied agents and actors with overlapping interests in historic urban settings, and the evolution of seminal concepts in planning for conservation

discourse(s).

**Availability:** elective for CP, IP, HCP, IREP, IPAD, SP, SU, TCP, UR

BENVGURB

**Planning Practices for Urban Development in Historic Cities and Neighbourhoods***(15 credits)*

This module is delivered through a mix of lectures, small group seminars, workshops and site visits. It aims to develop the students' ability to critically choose, adapt and apply different methods and methodologies in assessing the significance of heritage assets on an area basis, and the understanding of strengths and limitations of particular methods and methodologies.

**Availability:** elective for CP, IP, HCP, IREP, IPAD, SP, SU, TCP, UR

BENVGUR2

**Development Projects***(15 credits)*

This module looks at the different conceptualisations of the development process, the process of value creation and (re) distribution, risk and return considerations as well as the strategies employed by the public, private and third sector actors engaging in development projects. It also examines a range of techniques available for environmental, social, economic and financial appraisal, their strengths and limitations and the appropriate contexts for their application. The module comprises lectures, seminars and site visits.

**Availability:** Core for UR; capped elective for HCP, IREP, IPAD, SU, TCP.

BENVGUR4

**Case Studies in Preparing Regeneration Projects***(15 credits)*

This is a project module, in which the main activity is the development of a group project for the regeneration of a location in London. The course is delivered through weekly group

meetings and tutorial sessions, with two lectures at key stages of project work and group presentations to the class.

**Availability:** Core for UR; specialism for IP and SP; available as an elective for HCP, IREP, SU, TCP with BENVGUR6 as a pre-requisite.

BENVGUR5

**Implementing Regeneration Projects***(15 credits)*

This module aims to discuss some key issues which impact on effective regeneration in practice, particularly community engagement and evaluation and delivery. The module comprises primarily lecture based sessions and fieldtrips to sites around London. It also includes an element of student input through discussions of specified reading, in addition to private study and class and coursework preparation.

**Availability:** Core for UR only.

BENVGUR6

**Urban Problems and Problematics***(15 credits)*

This module introduces you to some of the key theoretical perspectives on urban regeneration and examples of how these theories have come to bear directly on or relate to regeneration practice. It explores broader conceptions of economic growth, creativity, and globalisation. It also examines, in detail, different aspects of urban regeneration policy such as security and the city and contemporary urban politics. The module is lecture based.

**Availability:** Core for UR; specialism for IP and SP; open elective for HCP, IREP, IPAD, SU, TCP.

BENVGUR9

**Critical Debates in Urban Regeneration***(15 credits)*

The aim of the module is to provide students an opportunity for in-depth reading, reflection and critical discussion around key concepts and themes in European and global urban regeneration through student







## The Bartlett School of Planning UCL Faculty of the Built Environment

[www.bartlett.ucl.ac.uk/planning](http://www.bartlett.ucl.ac.uk/planning)

The Bartlett School of Planning  
The Bartlett  
UCL Faculty of the Built Environment

5th and 6th floor  
Central House  
14 Upper Woburn Place  
London WC1H 0NN



**The Bartlett** School of Planning

### Image credits

Sections: UDCP – Filipa Wunderlich, IREP – Mark Tewdwr-Jones, UR – Nikos Karadimitriou,  
HCP – Matthew Carmona, MIPAD – Harry Dimitriou, SU – Sonia Freire Trigo, TCP – Robin Hickman, MPlan –  
Michael Short, MRes – Matthew Carmona, IP – Jessica Ferm, SP – DAVID ILIFF. License: CC-BY-SA 3.0

Cover: Matthew Carmona, Filipa Wunderlich, Nigel Clifford-Rowl Images, Ben Clifford, Robin Hickman,

Angela Fattibene, Lucy Montague, Philip Bradford

BSP: Assaf Frances, Charelene Chen, Sonia Freire-Trigo



This publication was printed on sustainable paper using only vegetable-based inks.  
All paper waste from the manufacturing of this publication was recycled and reused.

The Bartlett School of Planning  
The Bartlett  
UCL Faculty of the Built Environment

5th and 6th floor  
Central House  
14 Upper Woburn Place  
London WC1H 0NN

[www.bartlett.ucl.ac.uk/planning](http://www.bartlett.ucl.ac.uk/planning)

