

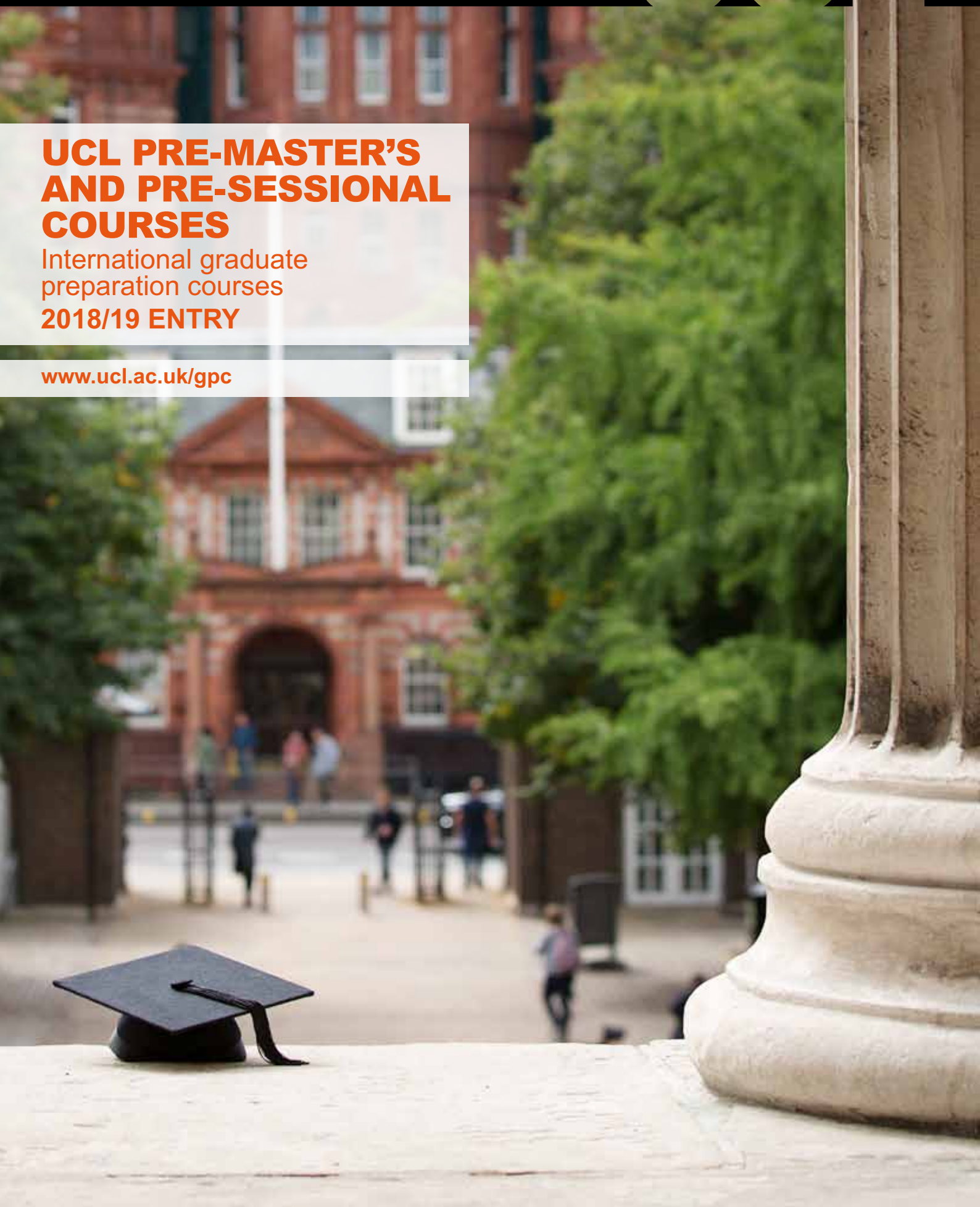


## UCL PRE-MASTER'S AND PRE-SESSIONAL COURSES

International graduate  
preparation courses

**2018/19 ENTRY**

[www.ucl.ac.uk/gpc](http://www.ucl.ac.uk/gpc)



# Welcome to UCL: London's Global University

UCL (University College London) is a world-leading multidisciplinary university with an international reputation for high-quality research and teaching.

Based in the heart of London, UCL is centrally located in the cosmopolitan university district of Bloomsbury. The main campus is within easy reach of outstanding academic, social and cultural resources, such as the British Library and the British Museum.

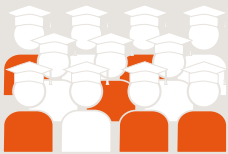
## About UCL



**60** academic departments in **11** faculties



Number **1** in the UK for research strength in the latest (2014) Research Excellence Framework



The highest number of professors in any UK university



**29** Nobel Prize winners



Staff-to-student ratio is **1:10**



**39,000** students from **156** different countries



**41%** of the student population is from overseas



The Students' Union UCL (SU UCL) has more than **250** clubs and societies

## QS World University Rankings 2018

Rank	Institution	Country
1	Massachusetts Institute of Technology	USA
2	Stanford University	USA
3	Harvard University	USA
4	California Institute of Technology (Caltech)	USA
5	University of Cambridge	UK
6	University of Oxford	UK
7	<b>UCL (University College London)</b>	<b>UK</b>
8	Imperial College London	UK
9	University of Chicago	USA
10	ETH Zurich – Swiss Federal Institute of Technology	Switzerland



The UCL main library

# UCL Graduate Preparation Courses: Overview

UCL Graduate Preparation Courses (GPC) provide international students with the essential academic and language skills, knowledge and support to progress confidently and smoothly onto a postgraduate degree at UCL or other top UK universities.

Our courses fulfil UCL's English language requirements and are accepted by some other UK universities. You should carefully check the entry requirements with each individual institution before applying.

## What can I study?

- UCL International Pre-Master's
- UCL Pre-Master's Certificate in Architecture
- UCL Pre-sessional English courses

## What will I learn?

You will develop the linguistic, academic and research skills needed to succeed at Master's level, including:

- critical thinking skills
- reading academic texts effectively
- developing lecture comprehension
- expressing and supporting ideas clearly and accurately in academic communication
- enhancing oral communication skills through presentations and class participation
- undertaking independent research.

## Why study a Graduate Preparation Course at UCL?

- **Immersion:** You will gain valuable experience in the British education system and quickly develop an understanding of the learning style required in the UK. Courses are delivered through a range of lectures, classes and tutorials; the same way you are taught in a Master's degree. There is an average of 20 UCL teaching hours\* per week; by the end of the course you will feel more confident engaging in graduate level activities.
- **Teaching quality:** You will be taught on campus by highly qualified UCL teaching staff with expertise in teaching international students. The average class size is 14 students.
- **Support:** You will receive regular one-to-one tutorials and individual guidance from an Education Advisor on submitting degree applications. As a UCL student, you will have access to UCL's extensive academic and welfare resources.
- **Student experience:** There are many opportunities throughout the year to connect with other students from all over the world through the UCL Centre for Languages & International Education social activities programme.

## How do I apply?

1. Select the appropriate course for your English language level, academic aims and availability from the information provided in this brochure and on our website.
2. Applications are made online at: [www.ucl.ac.uk/gpc](http://www.ucl.ac.uk/gpc)
3. When your application has been assessed we will contact you to confirm whether we can offer you a place on the course. Entry will depend on your existing level of English (including subtests), academic history and English language level required for your degree programme.
4. Offer holders will receive information, via email, on how to formally accept their offer, pay the course fees and apply for UCL accommodation.

You should apply as early as possible to secure your place on the course and in UCL accommodation.

## Accommodation

[www.ucl.ac.uk/accommodation](http://www.ucl.ac.uk/accommodation)

The fees you pay for your accommodation will vary depending on your needs, the location and facilities.

The following tables show you the range of fees for 2017/18 per week. Fees for 2018/19 will be set in the Spring of 2018.

### Self-catered: UCL Student Houses

Single room: £135 – £235 per week

### Catered: UCL Halls of Residence

Single room: £185 – £222 per week

The majority of UCL accommodation is within 10–30 minutes' walk of the main campus.

## UCL's English language requirements for graduate study

A guide to UCL's English language proficiency requirements for UCL graduate taught programmes can be found below. English language proficiency requirements for each degree can be found on the Prospectus programme pages: [www.ucl.ac.uk/graduate](http://www.ucl.ac.uk/graduate)

STANDARD LEVEL	GOOD LEVEL	ADVANCED LEVEL
For graduate taught programmes including: • Architecture MArch (ARB/RIBA Part 2) • Civil Engineering MSc • Clinical Pharmacy, International Practice and Policy MSc	For graduate taught programmes including: • Biosciences MRes • Comparative Business Economics MA • Management MSc	For graduate taught programmes including: • Comparative Literature MA • International Public Policy MSc • Law LLM
<b>UCL Pre-Master's and Pre-sessional courses</b> Overall: 65% Subtests minimum: 60% (Pre-MArch course available for Architecture programmes)	<b>UCL Pre-Master's and Pre-sessional courses</b> Overall: 70% Subtests minimum: 65%	<b>UCL Pre-Master's and Pre-sessional courses</b> Overall: 75% Subtests minimum: 65%
<b>IELTS</b> Overall: 6.5 Subtests minimum: 6.0	<b>IELTS</b> Overall: 7.0 Subtests minimum: 6.5	<b>IELTS</b> Overall: 7.5 Subtests minimum: 6.5



\*The UCL class hour is 50 minutes

# UCL International Pre-Master's course (IPM)

UCL's International Pre-Master's is a preparation course for international students who are aiming to study for a postgraduate degree at UCL or elsewhere in the UK. The International Pre-Master's is a stimulating and rigorous course which provides you with the levels of English language and academic skills required to succeed at graduate level.

## Why study the International Pre-Master's?

- The course helps facilitate the smooth transition to Master's level from a variety of educational backgrounds. In 2016, our students came from 16 different countries and over 70% of them received a degree offer from UCL or other top academic institutions including:
  - » University of Oxford
  - » Imperial College London
  - » University of Edinburgh
  - » University of Manchester
  - » London School of Economics and Political Science (LSE)
  - » University of Bristol
- The International Pre-Master's prepares you for your target programme by studying content in your area of interest. You will develop discipline-specific academic skills by engaging with topics related to your future degree.
- With an average of 14 students per class and weekly one-to-one tutorials, you will receive personalised support and guidance, including assistance with your application for entry to Master's programmes.

## Course structure

You will study three compulsory modules which will introduce you to the English language, research methodologies and academic skills necessary to succeed on a Master's degree.

### 1. English for Academic Purposes:

Communicating, building and sharing knowledge in academic contexts through reading, writing, speaking and listening.

### 2. Research, Argumentation and

**Criticality:** Examining research methods used at graduate level, development of critical, analytical and argumentative skills for study at that level and improvement of language proficiency to support these.

### 3. Discipline-specific Research,

**Argumentation and Criticality:** Builds on the first two modules by further developing research, argumentative and critical skills in a chosen discipline or one closely related to

it. This involves looking at what knowledge is in that context and how that knowledge is constructed and communicated in your chosen, or a closely related, academic discipline. Options may include:

- Architecture and Design
- Business and Management
- Finance, Accounting and Economics
- Humanities and Social Sciences
- Law and International Relations
- Life Sciences and Medical Sciences
- Science, Technology, Engineering and Mathematics (STEM)

Teaching is through lectures, classes, seminars and workshops. In addition, you will receive individual tutorials every week.

## Course assessment

You will receive the International Pre-Master's certificate based on a combination of formal course assessments and examinations.

The qualification will satisfy UCL's English language proficiency requirement.

If you apply to a university other than UCL you should check that the International Pre-Master's examination result will be acceptable for entry to that degree.

## Entry requirements

Two courses are available:

- 32 weeks (September start)
- 20 weeks (January start)

The course you take will depend on your current English language level.

Course start date	IELTS overall minimum	IELTS subtest minimum
<b>September 2018</b> (32 weeks)	5.5	5.5
<b>January 2019</b> (20 weeks)	6.0	6.0

These are the minimum entrance requirements and will normally result in suitable candidates being offered a place on the course.

Applicants for the January start with one or two subscores of no less than 5.5 may be considered if they have 6.0 overall and a particularly strong academic record.

Entry requirements for UCL graduate programmes are available on the Graduate Prospectus website.

 [www.ucl.ac.uk/graduate](http://www.ucl.ac.uk/graduate)

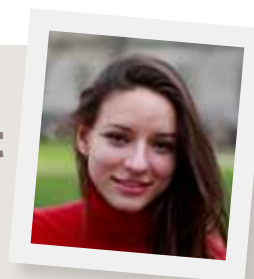
## Fees

Course start date	Fees
<b>September 2018</b>	£16,975
<b>January 2019</b>	£12,825

The International Pre-Master's finishes on 30 June 2019. Course dates include examination results and additional course administration, where necessary. Tuition and course examinations end no later than 15 June 2019.

Details of other costs associated with the course (e.g. application fee, living expenses, field trips and excursions) can be found on the course website.

## Student View



The International Pre-Master's programme has greatly improved my academic skills, in particular my writing and English language skills. I gained valuable experience in conducting research and learnt argumentative and critical skills in the fields of science and management, which gave me a solid academic foundation. As a result, my overall confidence increased and I felt better prepared to start a Master's degree.




**Dayanna Citroen**  
Project Enterprise and Management  
MSc at UCL  
Former IPM student

## Contact information

UCL International Pre-Master's Course

 [pre-masters@ucl.ac.uk](mailto:pre-masters@ucl.ac.uk)

 +44 (0)20 7679 4841

 [www.ucl.ac.uk/pre-masters](http://www.ucl.ac.uk/pre-masters)

# UCL Pre-Master's Certificate in Architecture (Pre-MArch)

The UCL Pre-Master's Certificate in Architecture (Pre-MArch) is a 6-month intensive course designed to prepare international students specifically for Master's in Architecture (MArch) programmes offered at the UCL Bartlett School of Architecture.

## Why study the Pre-MArch?

The course aims to give you the skills, experience and confidence to study at one of the world's best architecture schools on one of the following programmes:

- » Architecture MArch (ARB/RIBA Part 2)
  - » Urban Design MArch
  - » Architectural Design MArch
  - » Design for Manufacture MArch
  - » Design for Performance and Interaction MArch
- The Pre-MArch will develop your academic English and literacies as well as the research and critical thinking skills required for studying at postgraduate level. The Pre-MArch will also support your architectural design skills through design projects and portfolio making and help you further reflect on your professional practice.
  - The course has been specially developed by the UCL Bartlett School of Architecture and the UCL Centre for Languages & International Education based on the needs of international architecture students. You will benefit from the teaching and specialist knowledge of highly qualified academic staff in each department.
  - The Pre-MArch is an intimate programme. You will receive personalised support and guidance, including assistance with your Master's application for entry to the UCL Bartlett School of Architecture. There is no direct entry onto any of the Bartlett Master's programmes. In 2016, six out of seven Pre-MArch students progressed to a Master's degree at UCL; the remaining student went on to study at another London university.

## Course structure

You will study two compulsory modules:

**Design:** This module offers an introduction to UCL's Bartlett School of Architecture, translating critical thinking into design and architectural speculation through drawing and model-making. The work-produced aims strengthen the portfolio required for interviews for Master's in Architecture (MArch) programmes.

## Academic Research and Reflective Practice

**Practice:** This focuses on academic English skills and literacies with an emphasis on reflection, criticality, research, as well as efficient communication and coherent argumentation.

Teaching includes lectures, seminars, workshops and field trips in addition to individual weekly tutorials.

## Course assessment

You will be awarded the Pre-MArch based on a combination of formal course assessments and examinations. You will be assessed by:

- A research project
- A reflective report
- The design project will be assessed by a final oral presentation and a physical portfolio of photographs, drawings and propositional models.

## Entrance requirements and fees

English language minimum requirements:

Course start date	IELTS overall minimum	IELTS subtest minimum	Fees
January 2019	6.0	6.0	£11,845

The Pre-Masters Certificate in Architecture finishes on 30 June 2019. Course dates include examination results and additional course administration, where necessary.

Details of other costs associated with the course (e.g. application fee, living expenses, field trips and excursions) can be found on the course website.

 [www.ucl.ac.uk/pre-march](http://www.ucl.ac.uk/pre-march)

## Academic View

**Professor CJ Lim**  
Professor of Architecture and Urbanism  
Director of International Affairs  
UCL Bartlett School of Architecture



I meet so many able international students who wish to come and study the MArch programmes. Strong portfolios and academic levels are prerequisites, but it is the students' ability to formulate critical thinking and writing that is the key to success on the MArch programmes. Written work at UCL is so important and the strength of their essays will determine, to a large extent, their success on the course. The strongest MArch students must be able to communicate and engage in academic discourse, and can translate their critical thinking into innovative design propositions. The UCL Pre-Master's Certificate in Architecture has been specifically developed to enhance the performance of international MArch students.



## Contact information

UCL Pre-Master's Certificate in Architecture

 [pre-march@ucl.ac.uk](mailto:pre-march@ucl.ac.uk)

 +44 (0)20 7679 8666

 [www.ucl.ac.uk/pre-march](http://www.ucl.ac.uk/pre-march)



# UCL Pre-sessional English courses

UCL Pre-sessional courses are intensive courses for international students who are planning to study a graduate degree at UCL or another UK university, but do not meet the English language requirement of their conditional offer.

## Why study Pre-sessional English?

You will develop the academic skills needed for a range of disciplines and attain the English language proficiency requirement for study at a world-leading university.

Specifically, it aims to:

- develop your skills in understanding and analysing academic texts and use them in writing and speaking
- help you to more fully understand lectures while taking effective notes
- improve your ability to speak in academic contexts, with emphasis on oral presentations and seminars
- develop your ability to write relevant, well-argued essays and examination answers in an academic style
- improve your English grammar, vocabulary and pronunciation as used in academic contexts
- enhance your independent and library-based research skills
- encourage you to adopt the independent approach to learning expected at UK universities.

## Course structure

The pre-sessional courses are intensive, with teaching taking place from Monday to Friday. Class sizes are kept small, with an average of 14 students in each class.

You will follow a mixture of classes and tutorials each week. The timetable also includes a lecture programme given by leading UCL academics, exposing you to different disciplines and world-leading research.

## Course assessment

Students are assessed through:

- coursework (in class and at home)
- observation of your performance and progress by teachers in class
- an extended essay and related oral presentation
- final examinations that focus on the skills of reading, listening and writing.

If you successfully pass the course with the requirements of your UCL offer you will not need to take an IELTS exam for entry onto your UCL Master's degree.

## Entrance requirements

Course	Who is it for?
19 weeks	For students aiming to enrol at UCL or another UK university
12 weeks and 8 weeks	For students holding conditional offers for a UCL degree programme
6 weeks	For students holding an offer for a UCL degree programme (conditional or unconditional)

Each pre-sessional course has a range of minimum English language entry levels that depend on the English language level required by the degree programme.

To confirm which course to apply for, please see guidance on the course website:

 [www.ucl.ac.uk/pre-sess](http://www.ucl.ac.uk/pre-sess)

## Course dates and fees

Course	Start date	Fees
19 weeks	23 April 2018	£8,800
12 weeks	11 June 2018	£5,800
8 weeks	9 July 2018	£4,900
6 weeks	23 July 2018	£3,350

All pre-sessional courses finish on 14 September. Course dates include examination results and course administration. Tuition and examinations end no later than 31 August 2018.

Details of other costs associated with the course (e.g. application fee, living expenses, field trips and excursions) can be found on the course website.

## The qualification


The UCL Pre-sessional English qualification satisfies UCL's English language proficiency requirement. If you are holding an offer for a course at a university other than UCL you should make sure that UCL's Pre-sessional examination result will be acceptable.



## Contact information


UCL Pre-sessional English courses

 [presess@ucl.ac.uk](mailto:presess@ucl.ac.uk)

 +44 (0)20 7679 8665

 [www.ucl.ac.uk/pre-sess](http://www.ucl.ac.uk/pre-sess)

**Disclaimer:** This information is for guidance only. It should not be construed as advice nor relied upon and does not form part of any contract. For more information on UCL Graduate Preparation Courses please see:

 [www.ucl.ac.uk/gpc](http://www.ucl.ac.uk/gpc)

**UCL Pre-Master's and Pre-sessional courses**  
**UCL Centre for Languages & International Education**

University College London  
26 Bedford Way  
London WC1H 0AP