

OXFORD BROOKES UNIVERSITY

INTERNATIONAL STUDENT GUIDE 2019



CONTENTS

4	Oxford: a great place to be a student	16	Work placements and graduate employability	26	Faculty of Technology, Design and Environment courses
7	Why Oxford Brookes?	18	Fees and living costs	29	Oxford Brookes Business School courses
8	Brookes Sport	19	Scholarships and other funding	32	Faculty of Humanities and Social Sciences courses
9	Brookes Union	20	How to apply	35	Faculty of Health and Life Sciences courses
10	Campus life	21	Help with your application	38	Research degrees
12	Supporting your student journey	22	After applying: what to do next	39	Get in touch
13	Discover Oxford (map)	24	Pathways courses		
14	University accommodation				

WELCOME

“At Oxford Brookes, one of the things I am most proud of is that our students come from many different backgrounds and countries. Living and studying together, they share their knowledge and experiences, giving them a richer, more rounded view of the world. I strongly believe that these are signs of a successful, forward-thinking university.”

Professor Alistair Fitt, Vice-Chancellor



OXFORD: A GREAT PLACE TO BE A STUDENT



"Living in Oxford? I feel it's one of the most amazing experiences ... I have found that the local people here in Oxford are really welcoming and friendly ... I simply love the city."

*Nivedita Brahma, India,
Pre-Master's Certificate*





"I like Cowley as well, because there's a lot of cute, little places to have lunch and stuff and at night there are so many places to go with your friends and always lots to do."

*Evelien Pigeaud, The Netherlands,
International Foundation Business
and Technology*



"I feel like it's rich in history, but it's also very open to modern bits as well. It's not so old that it's really inconvenient, but it's old that I feel like I'm part of something bigger."

*Delania Marvella Marundrury, Indonesia,
Pre-Master's Certificate*





"As soon as I saw the university for the first time I was amazed. I came through the John Henry Brookes Building and it's just amazing ... I've already recommended Oxford Brookes to a lot of my friends."

Muhammed Selmani, Croatia, International Foundation Diploma

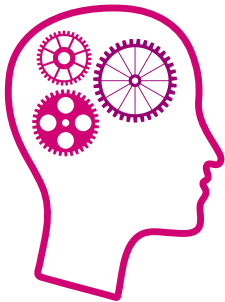
WHY OXFORD BROOKES?



18%

of our students are international, from **more than 140 countries**

HESA 2016/17



No.1

young university in the UK for **teaching and research**

Times Higher Education Young University Rankings 2018



93.2%

of Brookes students **are in work or further study** within 6 months of graduating

HESA Destination of Leavers 2017



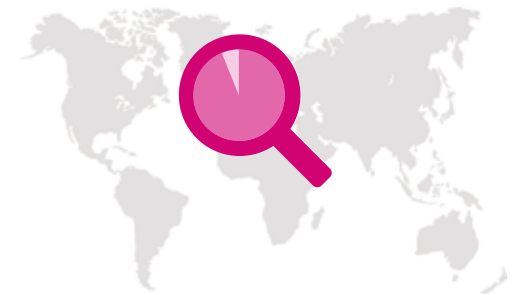
Among the **world's top universities** in 14 individual subject areas

QS World University Rankings by Subject 2018



The **only UK university** ranked in the top 50 institutions under 50 years old

QS World University Rankings Top 50 Under 50 2019



94%

of research at Brookes is **internationally recognised**

Research Excellence Framework 2014



Oxford is the 6th **safest university city** in the UK

The Complete University Guide 2017



Teaching
Excellence
Framework

Awarded Silver in the UK Government's Teaching Excellence Framework 2017

BROOKES SPORT

Whether you are aiming to be an Olympic-standard rower, county-level cricketer, or just want to enjoy social sports and keep fit and active, Oxford Brookes has so much to offer you.



Brookes Sport offers excellent gyms, Oxfordshire's premier climbing wall, a swimming pool, boathouse, courts, pitches, and much more. All these facilities are available to every student, including those at Swindon Campus and our partner colleges.



SUPPORTING PERFORMANCE

Oxford Brookes has a great history of sporting achievement, competing in the British Universities and College Sport (BUCS) leagues in 33 sports as well as having a collection of Olympic medals under our belt.

With the support of Santander, we offer sports scholarships to students who demonstrate outstanding talent and success in their chosen sport.



Find out more on page 19



BROOKES UNION

Brookes Union is the students' union at Oxford Brookes. You automatically become a member of Brookes Union when you enrol as a student, which gives you the opportunity to try new things and meet new people, as well as shape the student experience. Run for students, by students, Brookes Union brings you the events and societies that make up life at university.



SOCIETIES

Join a society to make friends and have amazing new experiences. We have over 100 including:

African Caribbean

Anthropology

ASEAN

Botanical

Business

Chinese

Creative Writing

Dance

Early Music

Electronic Dance

Feminist

First Aid

Formula Brookes

Gaming

Hellenic

Hong Kong

Ice

Indian

Italian

Japanese

Jazz

Korean

Latino

Law

Malaysian

Mixology

Music Industry

Nepalese

Nordic

Opera

Pakistan

Politics

Quiz

Radio

Rock

Saudi

South Asian

Tea

Turkish

Vegan and Vegetarian

Women in Business

...to name a few!



HERE TO HELP YOU

The Safety Bus is a great example of how Brookes Union helps students. If you're out late in or around Oxford, whether you're in town, at the library, or even just at a friend's house, give the Safety Bus crew a ring and they'll get you home.



EVENTS

The Union runs events throughout the year, from Freshers' Fair to One World Week (a celebration of cultural diversity at Brookes), wellbeing events, and market stalls. Add to that the huge range of events run by societies including day trips, socials and movie nights, and you won't be running out of things to do.

STUDENT REPS

The Union recruits students reps who act as the voice of students to improve things for themselves and others on their course. Student reps receive training and support from the Union.

CAMPUS LIFE

Each of our campuses has its own community, facilities and learning spaces. Our three campuses in and around Oxford are all linked by the BROOKESbus service, which also connects our halls of residence and the city centre. Healthcare students can choose to apply to study in Oxford or at our newly refurbished campus in Swindon.



HEADINGTON CAMPUS

Our largest campus is home to a vibrant mix of social and learning spaces and specialist facilities for subject areas from art, business and biological sciences to architecture, healthcare and humanities. It's made up of three different sites – Headington Road, Headington Hill and Marston Road – with student support facilities, our outstanding 24/7 library and the students' union.



HARCOURT HILL CAMPUS

Students based at Harcourt Hill, on education, philosophy, and communication courses enjoy excellent academic facilities alongside a specialist library, recently upgraded accommodation, social areas and a sports centre with playing fields and a swimming pool.

WHEATLEY CAMPUS

The School of Engineering, Computing and Mathematics is situated on its own dedicated technology campus at Wheatley. Its top-quality facilities include purpose-built, industry-level engineering workshops, and high-spec computing facilities along with a specialist library.



SWINDON CAMPUS

Our Swindon Campus offers a modern, professional learning environment for healthcare students based in the Swindon area. Benefiting from strong collaborative links with the Great Western Hospital and other placement partners, it offers a library, cafe and teaching rooms along with specialist clinical simulation suites.

SUPPORTING YOUR STUDENT JOURNEY

Starting university is exciting but also a time of great change. You may well be living independently for the first time, learning to balance your new lifestyle with your studies, so we've made it as easy as possible for you to access a wide range of support and advice.



INTERNATIONAL STUDENT ADVICE TEAM (ISAT)

Our specialist team for international students can advise you on visas and immigration before you arrive here and throughout your time at Oxford Brookes. The team organises social events for international students including a welcome programme and day trips to UK cities and famous places such as Stonehenge.

Our Global Buddies programme provides a friendly welcome for international students, putting you in touch with a current UK student to help you settle into Oxford life.

✉ isat@brookes.ac.uk
☎ +44 (0) 1865 484681

www.brookes.ac.uk/students/isat



"Reach out for support, because you will be given it and it won't be in a way that's overbearing or confusing. It's just straightforward and simple, which is really, really nice."

*Aston Pollington, USA,
International Foundation Diploma*

WELLBEING SERVICES

Advisers provide support for dyslexia, physical disabilities, mental health requirements, long-term medical conditions and autistic spectrum needs; they can recommend alternative assessment arrangements and liaise with teaching and other support staff.

Qualified counsellors offer confidential, one-to-one tailored support, as well as workshops and talks to boost your sense of wellbeing.

Our Multifaith Chaplaincy is a service giving friendship and spiritual care to students – from any faith tradition or no faith at all.

www.brookes.ac.uk/students/wellbeing/

SUPPORT SERVICES

Personal academic adviser – a member of teaching staff providing academic support throughout the duration of your course.

Student support co-ordinators – based in each subject area, they are a great first person to go to, giving support with personal issues or concerns with your studies.

Medical Centre and NHS dental clinic – based on Headington Campus, and local doctor's surgeries close to the other campuses.

Academic English support – a range of options to help you develop the academic language skills you need for your degree.

Upgrade – our confidential advice service for guidance on study skills, maths or statistics.

CAREERS SERVICE

Our Careers Service is here to help you from day one, whether you know which career you want to follow, or are looking for some guidance on where to start. Here's a quick round-up of what's on offer:

One-to-one sessions with a careers consultant

Advice on writing your CV

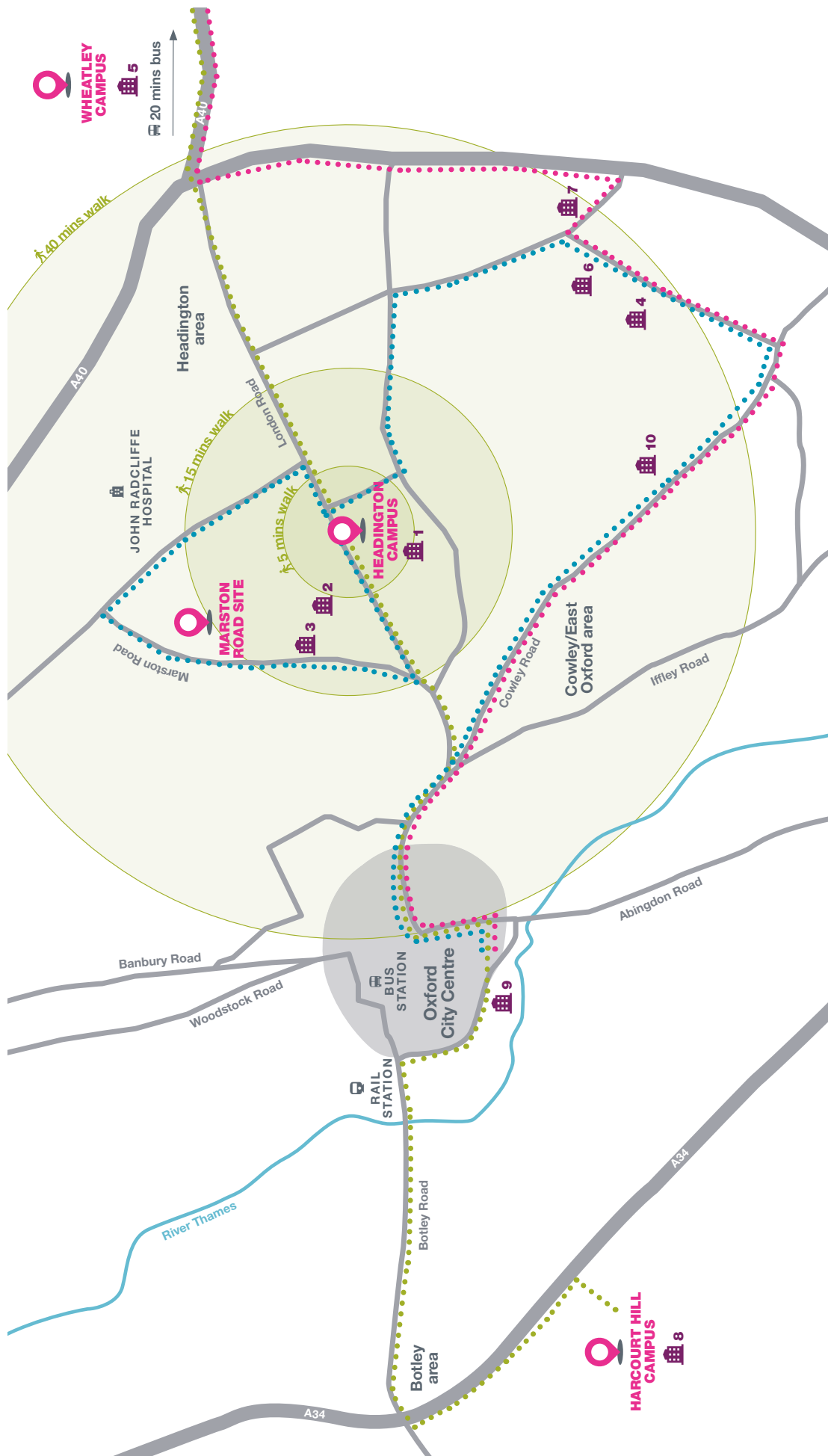
Mock interviews

Employer fairs for careers and placements

Workshops – general and subject-specific

Details of part-time and seasonal work

Lots of online resources



DISCOVER OXFORD

To find out more about university accommodation, see pages 14-15

All of our halls and campuses are connected by our BROOKESbus services

BUS ROUTES

- U1
- U5X
- U5/U4

- 1 Cheney Student Village
- 2 Clive Booth Student Village
- 3 Clive Booth Postgraduate Centre
- 4 Crescent Hall
- 5 Lady Spencer Churchill Hall, Wheatley
- 6 Paul Kent Hall
- 7 Slade Park
- 8 Westminster Hall, Harcourt Hill
- 9 Thames Street
- 10 The Mews



UNIVERSITY ACCOMMODATION

Living in halls can be a great experience. Meet new people from different backgrounds, enjoy your new-found independence and, above all, feel at home.



GETTING AROUND

All of our halls are on a BROOKESbus route and students living in halls can apply for a free bus pass on these services.



GUARANTEED PLACE

First year international students are guaranteed a place in our halls of residence if you apply by the deadline.



NAME OF HALL	LOCATION (DISTANCE FROM HEADINGTON CAMPUS)	COST PER WEEK (2018/19)	LENGTH OF CONTRACT (IN WEEKS)
1 Cheney Student Village	 On campus	£145.04 single study, ensuite bedroom plus £200 deposit	50
2 Clive Booth Student Village	 10 mins (½ mile / 800m)	£159.53 single study ensuite bedroom £130.06 single study bedroom, shared bathroom (with handbasin) £125.02 single study bedroom, shared bathroom (no handbasin) Family flats also available	38
3 Clive Booth Postgraduate Centre	 10 mins (½ mile / 800m)	From £163.03 single study, ensuite bedroom	38 or 50
4 Crescent Hall	 16 mins (2 miles / 3km)	£111.20 single study bedroom, shared bathroom	38
5 Lady Spencer Churchill Hall, Wheatley	 30 mins (5 miles / 8km)	£157.50 single study bedroom, shared bathroom (catered in term time)	38
6 Paul Kent Hall	 13 mins (1½ miles / 2.4km)	£139.02 single study ensuite bedroom £125.02 single study bedroom, shared bathroom	38
7 Slade Park	 11 mins (1½ miles / 2.4km)	£165 single study ensuite bedroom Studios also available	42
8 Westminster Hall, Harcourt Hill	 45 mins (5 miles / 8km)	£160.02 single study bedroom Studios also available	38
9 Thames Street	 15 mins (5 miles / 8km)	£159.81 single ensuite study bedroom	38
10 The Mews	  35 mins (1½ miles / 2.4km)	£179.33 single study ensuite bedroom Studio flats for couples also available	42



To locate a hall find the number of the hall on the map on page 13

The costs shown are for 2018/19. Costs for 2019/20 will be confirmed in 2019 and will be listed on our website: www.brookes.ac.uk/accommodation

We offer accommodation for students with medical conditions and disabilities. If you have specific accommodation needs then please contact the Accommodation Bureau for more information: www.brookes.ac.uk/accommodation

Bus times are based on typical travel to Headington Campus. Actual journey time will depend on traffic conditions and may take longer at peak periods.

WORK PLACEMENTS AND GRADUATE EMPLOYABILITY

Gaining an Oxford Brookes degree is not just an inspirational learning experience. It will also help you become internationally employable. We give you everything you need to ensure you have the technical, academic and personal skills and experience to help you pursue your chosen career path.



93.2%

of Brookes students **are in work or further study** within 6 months of graduating

HESA Destination of Leavers 2017

WORK PLACEMENTS PAID AND UNPAID

Oxford Brookes' location in the UK's most prosperous economic region, and our well-established relationships with leading companies in a number of industries mean we can offer significant and relevant placements. These can be in the local area, elsewhere in the UK or overseas, depending on your course. Many of our courses offer the option of paid work placements. Other courses offer shorter unpaid work experience opportunities engaging with appropriate companies on consultancy projects. Some have mandatory professional practice placements.

Recent work placements have included:

Air France	Grant Thornton
Alcatel-Lucent	Grosvenor
Aldi	Continental Europe
Aviva	Harley-Davidson
BBC Drama	HarperCollins
BMW	Hewlett Packard
Bosch	IBM
British Film Institute	KPMG
Cartier France	Macmillan Education
Christie's	Marriott
The Crown Prosecution Service	Mars
Disney	Microsoft
Dyson	Miele
Ernst & Young	PayPal
Europcar	PepsiCo
Fairmont Hotels and Resorts	Samsung
Four Seasons	Sky
GlaxoSmithKline	Swarovski
	Warner Bros

Find out which courses include work placements on pages 26-37 or visit our website:
www.brookes.ac.uk/courses

"As part of my course, I completed a one-year work placement with Four Communications – one of the leading independent communication agencies in the UK – where I met so many kind people who helped me learn and develop my communication and professional skills a lot. Thanks to them, I have realised my potential and interest in technology and digital marketing."

*Sammy Nguyen, Vietnam,
BA (Hons) Business Management*



GLOBAL NETWORK



With alumni in over 180 countries, you will be joining an international network of people who can offer a wealth of knowledge, experience and contacts. All over the world, our volunteers organise social and academic events, support current and prospective students, and send us news about fellow alumni in their country or region.

www.brookesalumni.co.uk/alumni-network

WORK PLACEMENTS ABROAD



The European work placement programme (part of Erasmus+) funds the opportunity to work elsewhere in Europe as part of your studies, if a placement is a recognised component of your programme.

Up-to-date information about how the UK's exit from the EU will impact on the Erasmus+ programme can be found at:

www.brookes.ac.uk/eu

INDUSTRY MENTORS

Oxford Brookes has teamed up with industry professionals across a number of sectors to provide one-to-one mentoring for our students. You will build a strong working relationship with your mentor who can give you practical support and advice on developing your career in your chosen direction. Our mentors come from different professional backgrounds such as accounting, hospitality management, sports science and law.

Our mentoring schemes can help you:

- gain insider knowledge of the industry
- network with established professionals
- access more work experience opportunities
- get sector-specific guidance on job hunting.

Find out more:

www.brookes.ac.uk/mentoring

PROFESSIONAL BODIES

Many of our courses are designed in partnership with employers to provide you with real life skills, and are recognised by the relevant professional body, opening the door to your chosen career.



**Find out more on
pages 26–37**



FEES AND LIVING COSTS

HOW MUCH WILL MY COURSE COST?

Our fees for international students are set annually and individual course costs vary. You can find costs for each course on our website.

www.brookes.ac.uk/international/finance

Before your course starts you will receive information on how and when to pay your fees. For some courses, you can pay in two instalments. For some postgraduate courses you will need to pay a deposit. For more information contact our Student Finance Team:

✉ financefees@brookes.ac.uk
☎ +44 (0)1865 483088

WHAT ARE THE VISA FINANCIAL REQUIREMENTS?

To apply for your visa you must be able to show that you have enough money to pay your tuition fees and for living costs for the first year of your course. The specific amounts set by the UK government's Home Office can be found at:

www.brookes.ac.uk/students/isat/visas

FIELD TRIPS

Many of our courses include field trips. These may be in the UK or overseas, optional or compulsory. There may be an additional cost for field trips - see the 'in detail' tab on your course page on our website.

Approximate tuition fees for 2019/20*

COURSES	EU STUDENTS**	INTERNATIONAL STUDENTS
ENGLISH LANGUAGE		
University English 6 weeks	£2,030	£2,030
University English 12 weeks	£3,835	£3,835
FOUNDATION		
International Foundation Diploma (Extended pathway)	£13,085	£16,535
International foundation courses	£9,250	£12,700
All other foundation courses	£9,250	£13,150 - £14,000
UNDERGRADUATE		
All courses	£9,250	£13,150 - £14,000
PRE-MASTER'S		
Certificate	£5,730	£5,730
Diploma	£11,440	£11,440
POSTGRADUATE		
Taught courses	£5,560 - £9,000	£13,460 - £15,100
MBA for ACCA members	£11,020 (over 2 years)	£11,020 (over 2 years)
MBA for non-members	£15,440 (over 2 years)	£15,440 (over 2 years)
MSc Applied Accounting (ACCA)	£2,190	£2,190
Research course	£4,360*	£14,000 - £21,100

*Fees stated above are for 2018/19 academic year. Fees for 2019/20 academic year will be confirmed in July 2018. Please see our website for the latest fees.

**The fees that EU/EEA students starting courses at UK universities after the UK has formally left the EU are required to pay will depend on what is agreed as part of the UK's exit negotiations. Please see our website for the most up-to-date information: www.brookes.ac.uk/eu

LIVING IN OXFORD

The amount of money you will need for living costs will depend on your course and individual level of spending.

The UK Visas and Immigration service recommends you have at least £1,015 per month for living costs when studying outside of London.

Living costs will vary significantly from student to student, so you should think realistically about what you spend. Postgraduate research students may also need an extra £600-£1,000 for expenses such as thesis presentations, travel and equipment for research.



For more on fees and living costs, including study abroad and exchange fees, visit our website: www.brookes.ac.uk/international/finance

SCHOLARSHIPS AND OTHER FUNDING

We offer a range of scholarships to help our international students with the costs of studying at Oxford Brookes. There is financial support available to help you pay tuition fees and living costs including student loans, grants and discount schemes.

The financial support we offer varies from year to year but may include the following:

- Richard Haill International Scholarships for foundation students
- Academic Excellence Scholarships for pre-master's students
- John Henry Brookes scholarships for postgraduate students
- Faculty or department taught master's scholarships
- University research studentships
- Alumnus Loyalty Discount

For the most up-to-date information about our scholarships and financial support, please visit our website:

www.brookes.ac.uk/internationalscholarships/

SANTANDER SPORTS SCHOLARSHIPS

At Oxford Brookes, we are committed to developing and supporting the sporting excellence of our students. With the help of Santander, we offer sports scholarships to students who demonstrate outstanding talent and success in their chosen sport.

Find out more:
www.brookes.ac.uk/brookes-sport/clubs-teams-and-athletes/scholarships



HOW TO APPLY

We welcome applicants from all countries with a wide range of international qualifications. We are happy to look into all applications on an individual basis because if you are interested in coming to Oxford Brookes then we are interested in finding out about you.

UNDERGRADUATE COURSES

SEPTEMBER 2019 ENTRY

Applications should be made through the Universities and Colleges Admissions Service (UCAS), the UK's online undergraduate admissions system.

www.ucas.com/apply

You can choose up to five different universities and/or courses, or you can apply just to Oxford Brookes if you wish. The institution code for Oxford Brookes is OXFD 066.

Each university will decide whether to make you an offer. Some offers come with conditions, such as completing your current school course or taking an English language test before you can start your studies.

When you have decisions from each of the universities you will be asked to accept an offer (see page 22).

DEADLINES

International applications will be accepted until 30 June 2019. If you are from the European Union (EU) you must apply before 15 January 2019.

JANUARY 2019 ENTRY

You should apply directly to the university online:

www.brookes.ac.uk/international/apply/undergraduate

DEADLINES

For a January start you must apply directly to Oxford Brookes. Apply by 22 December 2018 for January 2019.

POSTGRADUATE TAUGHT COURSES

You should apply directly to the university, if you are applying for a:

- taught master's degree
- postgraduate diploma or certificate
- professional course

Find out more at:

www.brookes.ac.uk/apply/postgraduate

DEADLINES

Most courses are open to applications throughout the year. You should submit your application as early as possible as some courses fill up quickly.



INTERNATIONAL PATHWAYS COURSES

For pre-sessional University English, International Foundation Diplomas and pre-master's courses you should apply directly to Oxford Brookes. Full details are available on our website:

www.brookes.ac.uk/international/apply/pathway

POSTGRADUATE RESEARCH COURSES

You should apply directly to the university for postgraduate research courses.

YOU WILL NEED TO:

Contact the relevant postgraduate research tutor to discuss your proposal informally before you apply. This will ensure that the necessary facilities and supervisors are available for your research degree.

Visit the relevant department pages on our website or contact the Research Degrees Team on:

rd-enquiries@brookes.ac.uk

DEADLINES

Applications for research degrees may be submitted at any time during the academic year. Key intake dates for PhD students are September, January and April with further details available here:

www.brookes.ac.uk/students/research-degrees-team/prospective-students/applying

APPLYING FOR EXCHANGES AND STUDY ABROAD:

www.brookes.ac.uk/exchange

For more advice, please contact our admissions team:

✉ admissions@brookes.ac.uk
☎ +44 (0) 1865 483040



HELP WITH YOUR APPLICATION

Want to know who can help you with your application in your country? Or when we are next visiting? Or do you want to check your qualifications against our entry requirements?

OXFORD BROOKES IN:

INDIA

Gaurav Sharma

✉ indiaoffice@brookes.ac.uk

☎ +91 991 5244466

www.brookes.ac.uk/india

HONG KONG

Alice Wong

✉ hongkongoffice@brookes.ac.uk

☎ +852 8111 6689

www.brookes.ac.uk/international/hongkong

CHINA

Ina Fang

✉ ina.fang@cbbc.org.cn

☎ +86 13701244859

WeChat: +86 13701244859 (inafang)

QQ: 821136545

www.oxfordbrookes.cn

SOUTH EAST ASIA

Jean Ong

✉ jc.ong@brookes.ac.uk

☎ +6019-319 6118

www.brookes.ac.uk/malaysia

NIGERIA

Patrick Nnamdi Chukwuma

✉ nigeria@brookes.ac.uk

☎ +2348061552252

www.brookes.ac.uk/international/nigeria

We have officers in China, Hong Kong, India, South East Asia and Nigeria who can help and support you with your application. For more details including how to contact our in-country international officers please see the list to the left.

OUR REPRESENTATIVES

We work with representatives and organisations all over the world who can advise you on study options at Oxford Brookes and help you apply. Take a look at your country page on our website to find your nearest representative.

OUR VISITS

We also travel to many countries around the world attending exhibitions, giving presentations and talking to students about opportunities to study at Oxford Brookes University. If you have a question and would like to meet us, find out when we are coming to your country on our website:

www.brookes.ac.uk/international/country

SUBMITTING A PORTFOLIO?

Guidance for architecture students:

www.brookes.ac.uk/architecture-portfolio

GUIDE TO WRITING YOUR PERSONAL STATEMENT

When applying to a UK university you will need to provide a personal statement as part of your application. This statement is your chance to convince the admissions officer of your suitability for the course you have chosen to study.

For undergraduate applications your statement will be sent via UCAS to up to five different universities, so you need to focus on the subject area and the skills that you have, as well as your plans for the future.

For postgraduate courses you will generally apply separately to each university and so you will need to be much more focused on your reasons for choosing that particular course at that particular university. If you are switching to a different area of study you need to clearly explain your reasons for doing so.

Remember that many courses are competitive and having the published academic grades will not guarantee you admission. The personal statement is your chance to show that you will be more suitable than other candidates.

AFTER APPLYING: WHAT TO DO NEXT

If you receive an offer to study at Oxford Brookes you will need to follow our 6-step guide.

1

READ OUR CONDITIONS OF ACCEPTANCE

It is important that you read these before accepting a place at Oxford Brookes University.

You can find them on our website:

www.brookes.ac.uk/acceptance



2

ACCEPT YOUR OFFER

FOR UNDERGRADUATE AND FOUNDATION OFFERS THROUGH UCAS

Once every university that you have applied to has made their decision, UCAS will ask you to choose your 'firm acceptance' (your first choice) and your 'insurance acceptance' (your second or back-up choice).

See the UCAS website for more information: **www.ucas.com**

You must make your decision by the deadline UCAS gives you, otherwise your offers will be declined automatically.

FOR UNDERGRADUATE OFFERS NOT THROUGH UCAS

If you applied to start your undergraduate programme in January you will have applied directly to Oxford Brookes. All information about your offer will be sent to you by the University's admissions team. To reply to your offer and accept your place at Oxford Brookes University you will need to reply directly to the University by the deadline given.

Please note, unlike applications through UCAS, direct offers from Oxford Brookes for January do not give the option of firm or insurance choices.

FOR POSTGRADUATE OFFERS

You will be asked to accept your offer online and details will be in your offer letter.

FOR PATHWAYS OFFERS (ENGLISH LANGUAGE, FOUNDATION AND PRE-MASTER'S PROGRAMMES)

If you have applied for one of our university pathway courses, your application will be processed by our admissions team.

You can accept the offer online. The link to this will be sent with your offer letter.



"They sent me loads of information and they really helped me a lot with the whole process. They told me exactly what to do and did the rest for me."

Ingunn Lunde Heggebo, Norway, BSc (Hons) Psychology

3

PAY YOUR DEPOSIT – POSTGRADUATE AND PATHWAYS OFFERS

Your offer letter will state whether you need to pay a deposit to secure your place at Oxford Brookes. To pay you can use the Oxford Brookes online payment system.

<https://shop.brookes.ac.uk>

Your offer letter will also confirm the tuition fees for your course. For further information on fees, funding and payment methods please see our website:

[www.brookes.ac.uk/
international/finance](http://www.brookes.ac.uk/international/finance)

4

APPLY FOR ACCOMMODATION

As a first year international student you are guaranteed a place in our halls of residence if you apply and meet your offer conditions by the deadline.

If you are an EU student and make us your firm choice you will be guaranteed a place as long as you apply by the deadline.

After you have accepted an offer for September entry you should receive an email with information about how to apply online for accommodation.

For other start dates and advice on applying please visit our website or contact: accomm@brookes.ac.uk

[www.brookes.ac.uk/
accommodation](http://www.brookes.ac.uk/accommodation)

5

APPLY FOR YOUR VISA

If you are from a country which is not in the European Economic Area (EEA) or Switzerland you will need to have a student visa to come to the UK.

If you need a **Tier 4 student visa**, Oxford Brookes must first provide you with a Confirmation of Acceptance for Studies (CAS). This is required to comply with UK Visas and Immigration regulations.

To receive a CAS please follow these steps:

- 1** accept your offer
- 2** complete and submit the online CAS Information Form using the link in the email you will receive after you accept your offer
- 3** submit a copy of your passport including any previous UK visas.

You should apply for your CAS and visa as early as possible to make sure you can arrive before your course begins. However you cannot apply for your visa more than three months before your course starts.

If you are coming to Brookes for a short course and you are not continuing on to another course you can apply for a **short-term study visa**.

Check the website for the most up-to-date information for EU students:

www.brookes.ac.uk/eu

Please see our ISAT webpages for further information about visas and immigration:

[www.brookes.ac.uk/
students/isat/visas](http://www.brookes.ac.uk/students/isat/visas)



6

ENROL AND ATTEND INDUCTION

As an Oxford Brookes student you will start receiving support and advice even before you arrive in Oxford. We will email you a link to our New Student website around one month before the start of your course. Please let us know if you change your email address.

Activities during induction week include:

- meeting staff in your department and other students on your course
- in-person enrolment and receiving your study timetable
- workshops on living and studying, arranging your finances and extending your visa
- advice on registering with a doctor
- campus and library tours
- advice on using the computer network
- joining the Brookes Students' Union and sports centre.

For further information about what to do next visit: www.brookes.ac.uk/international/applicant

PATHWAYS COURSES

Develop your study skills, subject knowledge, and academic English as you build confidence for your degree.

5 REASONS TO STUDY A PATHWAYS COURSE AT OXFORD BROOKES



You have access to the same high-quality facilities and support services as our degree students, with guaranteed student accommodation for your first year.



You are taught by highly experienced lecturers with the passion to help you get on to your degree.



Our core class sizes are limited to just 18 students so you will get the attention you need.



You will have a personal academic adviser to support your studies and help you make the right decisions in your course.



You will study and become friends with people from all over the world, making your time on your course unforgettable.

WHICH PATHWAYS COURSE DO YOU NEED?

PRE-SESSIONAL ENGLISH

For English and study skills for undergraduate and postgraduate degrees



FOUNDATION COURSES

For academic skills and subject knowledge for undergraduate degrees



PRE-MASTER'S COURSES

For academic skills and subject knowledge for postgraduate degrees



PRE-SESSIONAL ENGLISH COURSES

Meet the language requirements for your undergraduate and postgraduate degree.

ENTRY REQUIREMENTS

Four levels of classes from IELTS 4.5 (4.0 in all skills) up to IELTS 6.5 (5.5 in all skills)

Dates

- Start in September, January, June – 12 week courses
- Start in July – 6 week course

Approximate fees

- 12 week course £3,835
- 6 week course £1,990

Find out more:

www.brookes.ac.uk/international/pre-sessional



All fees on these pages are for 2018/19. For 2019/20 course fees please see our website: www.brookes.ac.uk/international/pathways

FOUNDATION COURSES

If you have completed high school or secondary school and have less than 13 years of education you will usually need a foundation course before taking a degree in the UK. Once you enrol on an international foundation, you will have a guaranteed pathway to an undergraduate degree if you pass with required grades.

INTERNATIONAL FOUNDATION COURSES

INTERNATIONAL FOUNDATION DIPLOMA

Our flagship international foundation course fully prepares students from a range of backgrounds for undergraduate courses at Oxford Brookes University. It provides a bridge between school study in your home country and undergraduate study at a UK university.

- 24 week course
- Start in January or September
- Approximate fees £12,700
- IELTS 5.0 (5.0 in each skill) required
- Apply directly to Oxford Brookes

EXTENDED PATHWAY ALSO AVAILABLE

Includes an extra semester of pre-session English language lessons.

- September start only
- Approximate fees £16,535
- IELTS 4.5 (4.0 in each skill) required

Find out more: www.brookes.ac.uk/international/foundation

INTERNATIONAL FOUNDATION BUSINESS AND TECHNOLOGY

- Start in January or September
- IELTS 5.5 (5.5 in each skill) required
- Approximate fees £12,700

INTERNATIONAL FOUNDATION ARTS, HUMANITIES AND LAW

- Start in January or September
- IELTS 5.5 (5.5 in each skill) required
- Approximate fees £12,700

"I feel like my international foundation definitely prepared me for what to expect in the first year of my degree. It just gave me that time and that room to settle in to university."

Shamsa Al-Shaqsi, Oman

OTHER FOUNDATION COURSES

ART AND DESIGN FOUNDATION

- 1 year course
- Start in September
- Approximate fees £13,150
- Apply directly to Oxford Brookes

www.brookes.ac.uk/artfound

BUILT ENVIRONMENT FOUNDATION

- 1 year course
- Start in September
- Approximate fees £13,150
- Apply through UCAS

www.brookes.ac.uk/builtenv

COMPUTING FOUNDATION

- 1 year course
- Start in September
- Approximate fees £14,000
- Apply through UCAS

www.brookes.ac.uk/compfc

ENGINEERING FOUNDATION

- 1 year course
- Start in September
- Approximate fees £14,000
- Apply through UCAS

www.brookes.ac.uk/engfound

FOUNDATION IN HUMANITIES

- 1 year course
- Start in September
- Approximate fees £13,150
- Apply through UCAS

www.brookes.ac.uk/fih

PRE-MASTER'S COURSES

Achieve the academic and language skills for your master's degree.

Course title	IELTS entry requirement (in addition to a degree/diploma or equivalent work experience)	Course length	Start dates available	Approximate tuition fees
Pre-Master's Certificate: Study Skills	7.0 or native/near-native speaker	1 semester	January	£5,730
Pre-Master's Certificate: English Language and Study Skills	6.0 (5.5 in Reading/Listening/Speaking; 6.0 in Writing)	1 semester	January and May	£5,730
Pre-Master's Diploma	5.5 (5.5 in each skill)	2 semesters	January and September	£11,440
Two-Year Master's Degree	5.5 (5.5 in each skill)	Includes the Pre-Master's Diploma in your first year (with dates, fees and language requirements as above) with automatic progression on to a range of master's degrees (subject to grades). Just one application and one visa are required for your entire two years of study.		

FACULTY OF TECHNOLOGY, DESIGN AND ENVIRONMENT

ARCHITECTURE



The Architecture School at Oxford Brookes has long been recognised as one of the best in the UK. You'll benefit from studying in one of the most beautiful and inspiring cities in the UK with close industry links to London. Our international team of design tutors draw on the very latest practice and their research specialisms. You'll graduate with a rich portfolio of work and a degree that is highly regarded by the profession and industry.

RIBA 

ACSA
ASSOCIATION OF COLLEGE
SCHOOLS OF ARCHITECTURE



arb
Architects
Registration
Board

UNDERGRADUATE COURSES

Course title	Qualification	Duration
Architecture	BA Hons	3 years
Interior Architecture	BA Hons	3 years

POSTGRADUATE COURSES

Course title	Qualification	Duration
Applied Design in Architecture	MArchD (RIBA/ARB Part 2)	2 years
Architecture	MArch	1 year
Development and Emergency Practice	MA/PGDip/PGCert	1 year
Humanitarian Action and Peacebuilding	MA	30 months DLO JanE
International Architectural Regeneration and Development	MA/PGDip/PGCert	1 year
Shelter After Disaster	PGCert	1 Semester JanE
Sustainable Building: Performance and Design	MSc/PGDip/PGCert	1 year

ARTS, DIGITAL MEDIA AND PUBLISHING

Develop your creative skills, academic knowledge and employment prospects with our range of degrees in the arts, digital media and publishing. Our high-quality specialist facilities range from art studios and IT rooms with industry standard software, to a TV newsroom and a cinema room with state of the art equipment.

UNDERGRADUATE COURSES

Course title	Qualification	Duration	Work placements and experience
Music and Creative Sound*	BA (Hons)	3 years	Work experience module available
Digital Media Production	BA (Hons)	3 years (4 with placement)	Optional work placement available
Film	BA (Hons)	3 years	Work experience module available
Fine Art	BA (Hons)	3 years CA	Work experience module available
Media, Journalism and Publishing*	BA (Hons)	3 years	Work experience module available
Photography*	BA (Hons)	3 years	Work experience module available

* Subject to validation

POSTGRADUATE COURSES

Course title	Qualification	Duration
Digital Media Production	MSc	1 year
Film Studies: Popular Cinema	MA/PGDip/PGCert	1 year
MFA in Fine Arts	MFA	1 year
Music	MA/PGDip/PGCert	1 year
Social Sculpture and Connective Practice	MA/PGDip	1 year
Sound Arts	MA	1 year
Digital Publishing	MA/PGDip	1 year
Publishing Media	MA	1 year
Publishing Studies	MA/PGDip/PGCert	1 year DLO JanE

DLO Distance learning only **DLA** Distance learning available **C** Only available as a combined course **CA** Combined honours available
JAN January start only **JanE** January entry available **MarE** March entry available **JunE** June entry available **AprE** April entry available



BUILT ENVIRONMENT

The School of the Built Environment is one of the largest and most diverse of its kind within Europe. Industry leading teaching is backed up with practical experience. Our global network of employers and partners provides outstanding opportunities for work placements, so you'll benefit from excellent career prospects.

UNDERGRADUATE COURSES

Course title	Qualification	Duration	Work placements and experience
Construction Project Management	BSc (Hons)	4 years	Mandatory placement, mostly paid
Planning and Property Development	BA (Hons)	3 years	Optional work experience available, usually paid
Quantity Surveying and Commercial Management	BSc (Hons)	4 years	Mandatory placement, mostly paid
Real Estate Management	BSc (Hons)	3 years	Work experience can be planned by student
Urban Design, Planning and Development	BA (Hons)	3 years	Work experience can be planned by student

POSTGRADUATE COURSES

Course title	Qualification	Duration
Building Information Modelling and Management	MSc/PGDip/PGCert	1 year JanE DLA
Construction Project Management	MSc/PGDip/PGCert/ DLO	1 year JanE DLA
Environmental Assessment and Management	MSc/PGDip	1 year
Historic Conservation	MSc/PGDip/PGCert	1 year
Infrastructure and Sustainable Development	MSc/PGDip/PGCert	1 year JanE DLA
Planning	PGDip	1 year
Project Management in the Built Environment	MSc/PGDip/PGCert	1 year JanE DLA
Quantity Surveying and Commercial Management	MSc/PGDip/PGCert	1 year JanE DLA
Real Estate	MSc	1 year
Real Estate Investment Finance	MSc/PGDip	18 months - 5 years for MSc DLO JanE JunE AprE
Spatial Planning	MSc/PGDip	1 year
Urban Design	MA/PGDip/PGCert	1 year



DLO Distance learning only **DLA** Distance learning available **C** Only available as a combined course **CA** Combined honours available
JAN January start only **JanE** January entry available **MarE** March entry available **JunE** June entry available **AprE** April entry available

MECHANICAL ENGINEERING AND MOTORSPORTS

Oxford Brookes has a longstanding reputation for delivering top-quality mechanical engineering and motorsports degrees. Whether your passion is for road cars, race cars or high-performance sustainable engineering design, our courses can help you realise your career ambitions. Our links with industry-leading firms means there is an Oxford Brookes graduate in every Formula 1 team, evidencing our ability to give you access to the very best work placement and career opportunities.



UNDERGRADUATE COURSES

Course title	Qualification	Duration
Automotive Engineering	BEng (Hons)	3 years (4 with placement)
Automotive Engineering	MEng	4 years (5 with placement)
Mechanical Engineering	BEng (Hons)	3 years (4 with placement)
Mechanical Engineering	MEng	4 years (5 with placement)
Mechanical Engineering	BSc (Hons)	3 years (4 with placement)
Motorsport Engineering	BEng (Hons)	3 years (4 with placement)
Motorsport Engineering	MEng	4 years (5 with placement)
Motorsport Technology	BSc (Hons)	3 years (4 with placement)

Placement year is an optional paid work placement

POSTGRADUATE COURSES

Course title	Qualification	Duration
Automotive Engineering with Electric Vehicles	MSc	1 year
Mechanical Engineering	MSc	1 year
Motorsport Engineering	MSc	1 year
Racing Engine Systems	MSc	1 year



COMPUTING

Listed within the top 100 universities in the QS world rankings for computing, our courses will give you an excellent start to your career. Across all subject areas, from robotics and computer science to software development and IT management, you'll benefit from expert teaching based on the latest research. Our dedicated campus at Wheatley contains all the latest labs and equipment to enable you to reach your goal. The School is a close-knit community united by a passion for computing.

UNDERGRADUATE COURSES

Course title	Qualification	Duration
Computer Science	BA or BSc (Hons)	3 years (4 with placement) CA
Computer Science for Cyber Security	BSc (Hons)	3 years (4 with placement)
Computing for Robotic Systems	BSc (Hons)	3 years (4 with placement)
Information Technology Management for Business	BSc (Hons)	3 years (4 with placement)

Placement year is an optional paid work placement

POSTGRADUATE COURSES

Course title	Qualification	Duration
Computer Science	MSc/PGDip/PGCert	1 year (2 with placement)
Computer Science for Cyber Security	MSc/PGDip/PGCert	1 year (2 with placement)
Computing	MSc/PGDip/PGCert	1 year (2 with placement)
Software Engineering	MSc/PGDip/PGCert	1 year



OXFORD BROOKES BUSINESS SCHOOL

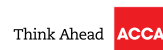
Oxford Brookes Business School provides a great foundation for a career in business, whether you are interested in a general business and management degree or a more specialist degree in marketing, enterprise, entrepreneurship, events or HR.

WHY CHOOSE US?

Every course at the Business School is designed with a focus on your career and delivered by staff who have **deep connections with the business world**. Features such as work placements, student projects, visiting speakers and industry visits provide you with the best foundation for a successful career.

Oxford Brookes Business School has an **international reputation** for providing innovative teaching. The Business School is committed to student-centred and active teaching methods where teaching means more than the transmission of information.

The Business School's new home on Headington Campus gives you access to **first-class learning spaces** close to other university facilities, accommodation and Oxford city centre.



PARTNER IN
LEARNING



UNDERGRADUATE COURSES

Course title	Qualification	Duration
Accounting and Finance	BSc (Hons)	3 years (4 with placement) JanE
Accounting and Economics	BSc (Hons)	3 years (4 with placement)
Business and Finance	BSc (Hons)	3 years (4 with placement)
Business and Human Resource Management	BA (Hons)	3 years (4 with placement)
Business and Management	BA (Hons)	3 years (4 with placement) JanE
Business and Marketing Management	BA (Hons)	3 years (4 with placement) JanE
Business, Enterprise and Entrepreneurship	BA (Hons)	3 years (4 with placement) JanE
Business Management	BSc/BA (Hons)	3 years (4 with placement) C
Business Management combined with Geography	BSc/BA (Hons)	3 years (4 with placement)
Economics, Finance and International Business	BSc (Hons)	3 years (4 with placement) JanE
Economics, Politics and International Relations	BA (Hons)	3 years (4 with placement) JanE
Events Management	BA (Hons)	3 years (4 with placement) JanE
International Business Management	BA (Hons)	3 years (4 with placement) JanE
Marketing Management	BA (Hons)	3 years (4 with placement) JanE
Marketing and Events Management	BA (Hons)	3 years (4 with placement) JanE
Marketing Communications Management	BA (Hons)	3 years (4 with placement) JanE

See our postgraduate courses on page 30



POSTGRADUATE COURSES

Course title	Qual.	Duration	Work placements and experience
Accounting	MSc	1 year	
Accounting and Finance	MSc	1 year	
Applied Accounting (ACCA members only)	MSc	Varies DLO	
Business Management	MSc	1 year JanE	Optional unpaid client project
Business Management (Corporate Social Responsibility)	MSc	1 year JAN	Optional unpaid client project
Business Management (Economics)	MSc	1 year	Optional unpaid client project
Business Management (Entrepreneurship)	MSc	1 year JanE	Optional unpaid client project
Business Management (Finance)*	MSc	TBC	TBC
Business Management (Human Resource Management)	MSc	1 year	Optional unpaid client project
Business Management (Marketing)	MSc	1 year JanE	Optional unpaid client project
Digital Marketing	MSc	1 year (2 years sandwich mode with supervised work experience) JanE	Optional 1 year supervised paid work experience (Sept entry only), optional unpaid client project
Finance	MSc	1 year JanE	
Human Resource Management	MSc	1 year	Work experience module
International Business, Culture and Languages	MA/PGDip/ PGCert	1 year	Optional work experience module
International Business Economics	MSc	1 year	Optional unpaid client project
International Events Management	MSc	1 year (or 2 years sandwich mode to include work placement project)	Optional 1 year supervised paid work experience, optional unpaid client project
International Events Marketing	MSc	1 year (or 2 years sandwich mode to include work placement)	Optional 1 year supervised paid work experience, optional unpaid client project
International Human Resource Management*	MSc	1 year	TBC
International Luxury Marketing	MSc	1 year (2 years sandwich mode with supervised work experience) JanE	Optional 1 year supervised paid work experience (September entry only), optional unpaid client project
International Management	MSc	1 year	Optional unpaid client project
International Management (Human Resource Management)	MSc	1 year	Optional client project and consultancy project
International Management and International Relations	MSc	1 year	Optional group consultancy project
International Trade and Logistics	MSc	1 year	Optional unpaid client project
Marketing	MSc	1 year (2 years sandwich mode with supervised work experience) JanE	Optional 1 year supervised paid work experience (September entry only), optional unpaid client project
Marketing and Brand Management	MSc	1 year (2 years sandwich mode with supervised work experience) JanE	Optional 1 year supervised paid work experience (September entry only), optional unpaid client project
Marketing Communications Management*	MSc	TBC	TBC
Oxford Brookes Global MBA	MBA	30 months or 24 months if you are an ACCA member (Blended/Flexible course) MarE DLA	Students are usually working whilst studying. Opportunity to engage in a consultancy project with employer, optional work experience as part of MBA project

* Subject to validation

DLO Distance learning only **DLA** Distance learning available **C** Only available as a combined course **CA** Combined honours available
JAN January start only **JanE** January entry available **MarE** March entry available **JunE** June entry available **AprE** April entry available



OXFORD SCHOOL OF HOSPITALITY MANAGEMENT

The Oxford School of Hospitality Management at Oxford Brookes has an international reputation as a world leader in hospitality management education. The expertise of our academics is widely recognised and our thriving links with leading employers, both nationally and internationally, mean you'll have access to some of the best career opportunities the industry has to offer.

TOP 3 REASONS TO STUDY WITH US



Some of the world's most prestigious employers like Marriott, Hilton, Four Seasons, Dorchester Collection and The Savoy offer work placements to our students.



Our own award-winning Brookes Restaurant provides you with hands-on experience of the restaurant business, and practical insights into managing and delivering a high-quality service.



Oxford is the perfect place to study hospitality management, linking you with all sectors of the hospitality industry from hotels and restaurants to events and entertainment venues.

UNDERGRADUATE COURSES

Course title	Qualification	Duration	Work placements and experience
International Hospitality Management	BSc	4 years	Mandatory paid placement

POSTGRADUATE COURSES

Course title	Qualification	Duration	Work placements and experience
International Hospitality, Events and Tourism Management	MSc	1 year (2 with placement) JanE	Optional 1 year paid work placement
International Hotel and Tourism Management	MSc	1 year (2 with placement) JanE	Optional 1 year paid work placement
International Tourism Management	MSc	1 year (2 with placement)	Optional 1 year paid work placement, consultancy project with industry partners

FACULTY OF HUMANITIES AND SOCIAL SCIENCES

LAW

Law is relevant to all aspects of life. It is a constantly changing and developing field, and that is what makes it such a fascinating subject to study. You will join a small, friendly, and caring Law School that puts student enquiry at the heart of what they teach. It's not simply about teaching you the law, it's about teaching and developing the way you think about the law, so that you graduate with the ability to shape your degree, and legal knowledge, to whatever the future holds.

UNDERGRADUATE COURSE

Course title	Qualification	Duration
Law	LLB (Hons)	3 years

Optional unpaid work experience available

POSTGRADUATE COURSES

Course title	Qualification	Duration
International Economic Law	LLM/PGDip/PGCert	1 year
International Human Rights Law	LLM/PGDip/PGCert	1 year
International Law	LLM/PGDip/PGCert	1 year
International Law, Globalisation and Development	LLM/PGDip/PGCert	1 year
International Trade and Commercial Law	LLM/PGDip/PGCert	1 year
Law (GDL)	Graduate Diploma	1 year (optional work experience available)
LLM in Legal Practice	LLM	13 months (part time) DLO

EDUCATION

Education changes lives. Our courses create brilliant teachers, early years specialists, policy makers, and leaders of special education and inclusion. On your chosen course, our academic staff will support you to develop your interests, in the classroom or in another setting.

UNDERGRADUATE COURSES

Course title	Qualification	Duration	Work placements and experience
Early Childhood Studies	BA (Hons)	3 years	Mandatory work experience, usually unpaid
Education Studies	BA or BSc (Hons) CA	3 years	Optional work experience for 1-2 weeks
Primary Teacher Education	BA (Hons)	3 years	Mandatory work experience, usually unpaid



POSTGRADUATE COURSES

Course title	Qualification	Duration
Education	MA/PGDip/PGCert	1 year
Education: Childhood and Youth	MA/PGDip/PGCert	1 year
Education: Higher Education	MA/PGDip/PGCert	1 year
Education: Leadership and Management	MA/PGDip/PGCert	1 year
Education: TESOL	MA/PGDip/PGCert	1 year DLA
PGCE Education Primary (campus based) 3-7	PGCE	1 year
PGCE Education Primary (campus based) 5-11	PGCE	1 year
PGCE Education (Post-compulsory)	PGCE	1 year

DLO Distance learning only **DLA** Distance learning available **C** Only available as a combined course **CA** Combined honours available
JAN January start only **JanE** January entry available **MarE** March entry available **JunE** June entry available **AprE** April entry available



SOCIAL SCIENCES

You can gain a fascinating insight into how human societies work on our social science degrees. They are taught by staff who are active researchers, so you will be exploring a range of approaches which reflect the latest thinking on your chosen subject. Our courses are engaging and flexible, and you'll have the opportunity to focus on what interests you most.



UNDERGRADUATE COURSES

Course title	Qualification	Duration
Anthropology	BA or BSc (Hons)	3 years CA
Biological Anthropology	BSc (Hons)	3 years
Criminology	BA or BSc (Hons)	3 years CA
Geography	BA or BSc (Hons)	3 years CA
International Relations	BA or BSc (Hons)	3 years C
International Relations and Politics	BA (Hons)	3 years
Politics	BA or BSc (Hons)	3 years C
Social Anthropology	BA (Hons)	3 years
Sociology	BA or BSc (Hons)	3 years CA

POSTGRADUATE COURSES

Course title	Qualification	Duration
Anthropology	Graduate Diploma	9 months full time JanE
International Relations (Distance Learning)	MA/PGDip/PGCert	Part-time DLO
International Relations	MA/PGDip/PGCert	MA 1 year
International Security	MA/PGDip/PGCert	MA 1 year
Primate Conservation	MSc/PGDip/PGCert	MSc 1 year
Primate Conservation: Apes in the Anthropocene	MSc/PGDip/PGCert	MSc 1 year
Primate Conservation: Human-Primate Interface	MSc/PGDip/PGCert	MSc 1 year
Primate Conservation: Lemurs and Nocturnal Primates	MSc/PGDip/PGCert	MSc 1 year
Primatology and Conservation	MRes	MRes 1 year

HUMANITIES

The Department of English and Modern Languages is located in a city with an unparalleled literary history and one that cherishes the power of the written and spoken word.

Whether unlocking the secrets of literary greats, expanding your own creative horizons or exploring cultures through language around the world, it is a place to be inspired. We regularly host internationally acclaimed British writers, such as Hilary Mantel and Philip Pullman. We also welcome award-winning writers from around the world, for example, Jamaican poet Ishion Hutchinson. You will be part of an inclusive department where a lively exchange of ideas around literature, language and contemporary culture is actively encouraged.

Oxford is also full of history, philosophy and culture. It has world-famous museums, beautiful buildings and a fascinating history of its own. We aim to capture your imagination, and our interdisciplinary approach means that you can explore how these fascinating areas of humanities help shape our understanding of the world around us.



UNDERGRADUATE COURSES

Course title	Qualification	Duration	Work placements and experience
Applied Languages	BA (Hons)	4 years	Mandatory work placement, paid or unpaid
Communication, Media and Culture	BA or BSc (Hons)	3 years CA	
Criminology	BA or BSc (Hons)	3 years	Optional work experience available
Drama	BA	3 years C	Optional work experience available
English Literature	BA or BSc (Hons)	3 years CA	Optional work experience available
English Language and Communication	BA (Hons)	3 years CA	Optional work experience available
English Literature with Creative Writing	BA (Hons)	3 years	Optional work experience available
History	BA or BSc (Hons)	3 years CA	Optional work experience available
History of Art	BA or BSc (Hons)	3 years CA	Optional work experience available
Japanese Studies	BA (Hons)	4 years CA	
Philosophy	BA or BSc (Hons)	3 years CA	Optional work experience available



POSTGRADUATE COURSES

Course title	Qualification	Duration
Creative Writing	MA/PGDip/PGCert	1 year
English Literature	MA/PGDip/PGCert	1 year
History	MA/PGDip/PGCert	1 year
MA History – History of Medicine	MA/PGDip/PGCert	1 year

FACULTY OF HEALTH AND LIFE SCIENCES

BIOLOGICAL, MEDICAL AND ENVIRONMENTAL SCIENCES

These degrees are a great foundation for a wide range of careers. Research-led teaching is geared towards developing your professional skills alongside the theory. We do this through lab-based experiments, practical experience in areas such as bioimaging, case studies, research projects and field trips. Our links with industry and the NHS (National Health Service) provide high-quality work placement opportunities.

UNDERGRADUATE COURSES

Course title	Qualification	Duration	Work placements and experience
Animal Biology and Conservation	BSc (Hons)	3 years (4 with placement)	Optional unpaid placement or work experience
Biological Sciences	BSc (Hons)/MBiol	3/4 years (5 with placement)	Optional unpaid placement or work experience
Biological Sciences (Genetics and Genomics)	BSc (Hons)	3 years (4 with placement)	Optional unpaid placement or work experience
Biological Sciences (Human Science)	BSc (Hons)	3 years (4 with placement)	Optional unpaid placement or work experience
Biomedical Science	BSc (Hons)	3 years (4 with placement)	Optional unpaid placement or work experience
Biological Sciences (Zoology)	BSc (Hons)	3 years (4 with placement)	Optional unpaid placement or work experience
Environmental Sciences	BSc (Hons)	3 years (4 with placement)	Optional unpaid placement or work experience
Equine Science	BSc (Hons)	3 years	
Equine Science and Thoroughbred Management	BSc (Hons)	4 years	Mandatory work placement
Medical Science	BSc (Hons)	3 years	Optional unpaid work experience available

POSTGRADUATE COURSES

Course title	Qualification	Duration
Conservation Ecology	MSc/PGDip/PGCert	1 year
Medical Genetics and Genomics	MSc/PGDip/PGCert	1 year





HEALTHCARE AND PROFESSIONAL DEVELOPMENT

If you're looking to take your first step into healthcare, then our courses offer the skills and knowledge to excel in a challenging and rewarding field. We offer a range of degrees, from nursing to physiotherapy, so you can choose the healthcare pathway that's right for you. You will benefit from first class practice-based education and gain expertise from top tier research. And you will emerge equipped to make a difference in your career. Meanwhile, our post-qualification courses will continue to support you on every step of your journey.



UNDERGRADUATE COURSES

Course title	Qualification	Duration
Health Sciences Open Award	BSc (Hons)	1 year JanE
Nursing (Adult)	BSc	3 years*
Nursing (Adult and Mental Health)	MSci	4 years*
Nursing (Children's)	BSc (Hons)	3 years*
Nursing (Mental Health and Child)	MSci	4 years*
Nursing (Mental Health)	BSc (Hons)	3 years*
Occupational Therapy	BSc (Hons)	3 years*
Physiotherapy	BSc (Hons)	3 years*

*Mandatory unpaid work placement

POSTGRADUATE COURSES

Course title	Qualification	Duration
Nursing (Children's) (Pre-Registration)	MSc/PGCert	MSc 2 years*
Nursing (Adult) (Pre-Registration)	MSc/PGCert	MSc 2 years*
Nursing (Mental Health) (Pre-Registration)	MSc/PGCert	MSc 2 years*
Nursing Studies (Leadership in Clinical Practice)	MSc/PGDip/PGCert	Up to 5 years (part time)
Management in Health and Social Care	MSc/PGDip/PGCert	1 year
Health Sciences Open Award	MSc/PGDip/PGCert	1 year
Occupational Therapy (Pre-Registration)	MSc/PGDip/PGCert	MSc 2 years*
Physiotherapy (Pre-Registration)	MSc/PGDip/PGCert	MSc 2 years*
Rehabilitation	MSc/PGDip/PGCert	MSc 1 year

*Mandatory unpaid work placement

DLO Distance learning only **DLA** Distance learning available **C** Only available as a combined course **CA** Combined honours available
JAN January start only **JanE** January entry available **MarE** March entry available **JunE** June entry available **AprE** April entry available



SPORT, EXERCISE AND NUTRITION

Our degrees are designed to prepare you for a career in this important subject area, spanning sport, exercise science, coaching, physical education and nutrition. You'll be learning from academics who combine passion for their subject with international recognition. Work placement opportunities help you build experience in a range of settings.



UNDERGRADUATE COURSES

Course title	Qualification	Duration	Work placements and experience
Nutrition	BSc	3 years	Optional work experience available
Sport and Exercise Science	BSc	3 years	Optional work experience available
Sport, Coaching and Physical Education	BSc	3 years CA	Compulsory work experience

POSTGRADUATE COURSES

Course title	Qualification	Duration
Applied Human Nutrition	MSc/PGDip/PGCert	MSc 1 year
Applied Sport and Exercise Nutrition	MSc/PGDip/PGCert	MSc 1 year

PSYCHOLOGY, SOCIAL WORK AND PUBLIC HEALTH

We offer a high-challenge, high-support environment, where you can work alongside our outstanding research and teaching staff, in order to develop your knowledge and skills in research and professional practice, as well as take care of your post-qualifying development needs.



UNDERGRADUATE COURSES

Course title	Qualification	Duration	Work placements and experience
Psychology	BSc	3 years	Optional work experience available
Social Work	BA	3 years	Mandatory unpaid work placement

POSTGRADUATE COURSES

Course title	Qualification	Duration
Psychology	Qualifying Certificate	1 semester (4 months) JAN
Psychology	MSc	1 year
Public Health	MSc/PGDip/PGCert	MSc 1 year
Social Work	MA/PGDip	2 years*

*Mandatory unpaid work placement

DLO Distance learning only **DLA** Distance learning available **C** Only available as a combined course **CA** Combined honours available **JAN** January start only **JanE** January entry available **MarE** March entry available **JunE** June entry available **AprE** April entry available

RESEARCH DEGREES

Oxford Brookes' well-established and growing international reputation for research is demonstrated by our results in the most recent Research Excellence Framework (REF) from 2014: 94% of research at Brookes is internationally recognised. We offer a number of research degrees including PhDs, and shorter research projects.

Key research areas:

ARCHITECTURE

- Low Carbon Building
- Architectural Engineering
- Place, Culture and Identity
- Development and Emergency Practice
- Design Theory Practice

ARTS

- Film Studies
- Popular Music
- Social Sculpture
- Sonic Art
- Opera
- Publishing Studies

BIOLOGICAL AND MEDICAL SCIENCES

- Biomedical Science
- Molecular Cell and Developmental Biology
- Evolution, Ecology, Environment and Conservation

BUSINESS SCHOOL

- Diversity Policy Research and Practice
- Management and Entrepreneurship Education
- Applied Economics, Finance and Development
- Critical Perspectives on Accounting, Social Responsibility and Governance

ENGINEERING, COMPUTING AND MATHEMATICS

- Artificial Intelligence and Vision Research
- Communications Media and Electronic Technologies
- Computer Security Research
- Cognitive Robotics
- Applied Formal Methods
- Applied Software Engineering
- Advanced Reliable Computer Systems
- Sustainable Engineering and Innovation
- Low Carbon Vehicles
- Simulation, Modelling and Systems Integration

EDUCATION

- Educational Purposes, Ethics and Beliefs
- Language, Learning, Culture and Identity
- Educational Policy, Partnership and Leadership
- Curriculum, Pedagogy and Assessment
- Childhood, Families and Communities

ENGLISH AND MODERN LANGUAGES

- Oxford Brookes Poetry Centre
- Materialities
- Networks and Localities
- Medicine, Science and Technology
- Memory and Life-writing
- Language and Discourse

HISTORY, PHILOSOPHY AND CULTURE

- Social and Cultural History
- History of Art and Visual Culture
- Health, Welfare, and Society
- Philosophy
- Early Modern History
- History of Crime
- Religion
- Communication, Media and Culture
- Modern Political and International History

HOSPITALITY MANAGEMENT

- The Centre for International Tourism and Events Management Research (CITEM)
- Tourism and Hospitality Management

LAW

- Fundamental Rights and Equality
- Criminal Law and Criminal Justice
- Critical Approaches to Law
- International Law
- Small Jurisdictions

HEALTH

- Health Workforce and Patient Safety
- Maternal and Women's Health
- Community Psychology and Public Health
- Older Person's Complex Care
- Pressure Injury Prevention
- Children and Families
- Oxford Philosophy Informing Nursing Theory and Scholarship
- Spirituality and Wellbeing
- Movement Science
- Clinical Exercise and Rehabilitation
- Clinical Applied Nutrition
- Occupational Sciences
- Nutrition and Health

BUILT ENVIRONMENT

- Urban Design
- Environmental Impact Assessment
- Spatial Planning
- Real Estate and Land Policy
- Construction Project Management

PSYCHOLOGY

- Cognition and Cognitive Neurosciences
- Applied Social and Health Psychology
- Developmental Psychology

SOCIAL SCIENCES

- Global Politics, Economy and Society
- Human Origins and Palaeo-Environments
- Gender Network
- Europe Japan Research Centre
- Nocturnal Primate Research Group
- Human Interactions with and Constructions of the Environment
- Oxford Wildlife Trade Research

HOW TO APPLY

You must first discuss your proposal informally with the relevant Postgraduate Research Tutor to make sure that an appropriate supervisor and the necessary facilities are available. You can find the most up-to-date contact information here:

www.brookes.ac.uk/students/research-degrees-team/contacts/postgraduate-research-tutors

You can make your application at any time during the academic year with potential start dates in September, January or April.

Submit your application directly to the university.

MORE INFORMATION

If you have any queries about our research degree programmes, or about applying, funding or other matters related to becoming a research student at Oxford Brookes, please contact us:

✉ rd-enquiries@brookes.ac.uk
☎ +44 (0) 1865 484244

GET IN TOUCH

COME FOR AN OPEN DAY

www.brookes.ac.uk/opendays

BOOK A CAMPUS TOUR

www.brookes.ac.uk/campustour

FIND OUT MORE ABOUT OUR COURSES

www.brookes.ac.uk/courses

CHAT TO A STUDENT AMBASSADOR

www.brookes.ac.uk/ambassadorchat



GENERAL ENQUIRIES

Ask us a question at:

www.brookes.ac.uk/international/contact-us

✉ international@brookes.ac.uk
☎ +44 (0) 1865 484848





**1 hour to
London by
train**

EXPLORE THE UK BY TRAIN:

1 hour to Birmingham

1 1/2 hours to Bath, Bristol
and Stratford-upon-Avon

2 1/2 hours to Brighton

3 hours to Manchester

6 hours to Edinburgh



**Explore Europe with
flights from London
Gatwick, Heathrow or
Birmingham airports**

To enquire about other
formats, please call our
enquiry centre on
+44 (0) 1865 484848 or get
in touch at **[www.brookes.
ac.uk/askaquestion](http://www.brookes.ac.uk/askaquestion)**



www.brookes.ac.uk/international