

Postgraduate *Guide 2019*



Working for you *and*
the Common Good

Come here to learn *more than can be taught*

Critical thinking. Self-assurance.
Leadership. Personal values.

If you want to shape the world around you, rather than be defined by it, GCU's programmes are for you. The academic excellence of our taught and research-based programmes is underpinned by our commitment to the Common Good, with all of our research aligned to the United Nations Sustainable Development Goals.

Sector-leading graduate employability and extensive career progression routes are key to the success of our postgraduate students. To achieve this, we continually invest in the very finest teaching and learning facilities, and work with industry advisors and professional bodies to keep our courses relevant.

So join us and learn, first hand, the importance of divergent thought, the value of strong and lasting networks and the importance of a clear world view to take you further in your chosen field.



gcu.ac.uk/postgraduate



World leading

*We have **city centre campuses**
in **Glasgow, London and New York** and partner institutions
across Africa, the Middle East
and Asia*



Effective

95%

of our graduates are in work or further study six months after graduation

(HESA, 2017)

Global

20,000 student population representing over **100** countries

Trailblazing

*With a heritage dating back to **1875**, we've been working for the **Common Good** for more than **140** years*

Contents

Come here to learn more than can be taught	1-2
Research led education: experience it yourself	5-6
Glasgow School for Business and Society	7-8
School of Engineering and Built Environment	9-10
School of Health and Life Sciences	11-12
GCU London	13-14
GCNYC	15-16
Join our postgraduate research community	17-18
Explore our Glasgow Campus	19-20
Discover Glasgow, Explore Scotland	21-22
How to apply	23-26
Finances and scholarships	27-28
Student support	30



Chancellor
Dr Annie Lennox OBE

“As your Chancellor, I look forward to exploring ways of communication and engagement so we can all be part of the solution to the challenges we face in the 21st Century. Thank you for giving me this opportunity to work with you in this aspirational way. I love Glasgow Caledonian University and the Common Good we stand for.”



Our Glasgow campus has recently undergone a £32 million transformation and provides one of the best learning environments in the UK.

Your future *starts here...*

At Glasgow Caledonian University, your learning will be modern. You will ask questions, you will conduct research, and you'll understand how to apply your knowledge to industry and public service. By the end of your studies you have the expertise to excel as a professional in your field, at home and overseas.

With more than 70 postgraduate taught courses and a range of postgraduate research opportunities, GCU offers you an education with a difference - enabling you to become an entrepreneurial, confident, socially driven leader of the future.

Equally important though, is the support network you'll build up across our tight-knit, welcoming and modern community campuses. We welcome students from more than 100 countries and have an alumni network of over 135,000 graduates who are making a difference around the world.

Our founding institution dates back to 1875, and the experience we have gained over more than 140 years helps us make sure our research and education programmes are targeted at current and future needs.

GCU researchers transformed light in to low cost electricity with their patented optical concentrator

Top 20 in the UK





Research led education: *experience it yourself*

At Glasgow Caledonian University we go beyond the rhetoric and put theory into practice. We deliver world-leading research across a spectrum of disciplines that provides you with a vibrant research environment to build your research skills and develop your career.

We are the first university to align our research with the United Nations Sustainable Development Goals and we encourage you to tackle some of the global challenges of our time, including:

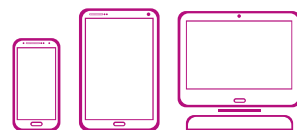
- ▶ **How do we** *lead healthy lives?*
- ▶ **How do we** *build inclusive societies?*
- ▶ **How do we** *develop sustainable environments?*

Research at Glasgow Caledonian University is conducted in partnership with industry and a wide network of partner universities, to ensure everything we do benefits you, our students, and wider society.

You will be joining the top Modern University in Scotland for research power (REF, 2014), with approximately £1 in every £6 of the University's turnover invested in research and innovation. At any one time, we are home to over 500 postgraduate research students; and much of our current research is funded by grants from prestigious funding bodies such as the Economic and Social Research Council, the European Commission, the Medical Research Council, National Institute of Health Research and Wellcome Trust.

“GCU has a unique social mission, For the Common Good, and our research priorities reflect the ethos of the University to work towards solving real societal challenges, both core to home and further afield.”

Professor Cam Donaldson, PhD
Pro Vice Chancellor and Vice Principal (Research)



gcu.ac.uk/research

Glasgow *School* for Business and Society

Join our Business School and you will be part of a cutting edge learning community that thrives on ideas, supports innovation and values the importance of social responsibility. Here you will find world-leading research, knowledge and expertise that's driven by our Common Good values. Our taught and research-based programmes focus on the impact of business on society, to help you navigate a rapidly changing world. Strong links to industry and professional bodies worldwide, fuse current business needs with contemporary academic thinking, to bring you a real-life learning experience and equip you with the work-ready skills to drive real differences in your career after graduation.

We are recognised as one of the top ten universities in the UK for research impact in social policy (REF, 2014). While 80% of our communication, cultural and media studies impact was rated as world-leading and internationally excellent.

Our areas of educational excellence

The Glasgow School for Business and Society drives many impactful projects: Grameen in the UK, a micro-lending initiative facilitated by GCU, offers small loans to encourage individuals' economic and personal development in the community; GCU worked as part of the Commonwealth Games Memories Day, alongside sporting stars to use sport as a way of tackling isolation, depression and dementia; our researchers carried out the first in-depth study in Scotland and England into the link between domestic violence and football.



Access on campus industry-standard facilities including a multimedia newsroom, editorial and radio production suites, digital radio studios, and a TV studio and gallery.



Graduate *careers*

Graduates from the Glasgow School for Business and Society have found careers working in companies including: Police Scotland; BBC; NATO; Morgan Stanley; Shell; Ministerie van Buitenlandse Zaken; DC Thompson; Eurosport; Zenzero Comunicazione srl; Visit Scotland and many more...

Accountancy, Finance and Risk

- MSc Accounting, Finance and Regulation
- MSc (Fast-track) Accounting, Finance and Regulation
- CPD Association of Chartered Certified Accountants (ACCA)
- MSc International Banking, Finance and Risk Management
- MSc Risk Management

Business and Management

- MSc Human Resource Management
- MSc International Business Management
- MSc International Operations and Supply Chain Management
- MSc Social Business and Microfinance

Events and Sports Management

- MSc International Tourism and Events Management

Fashion and Marketing

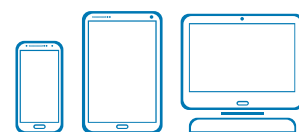
- MSc International Fashion Marketing
- MSc Marketing

Media and Journalism

- MA Multimedia Journalism
- MA Television Fiction Writing

Professional accreditations

Working partnerships with professional bodies ensures our courses are relevant, keeping you abreast of the latest advances in business. Our programmes and modules are accredited by over 25 professional institutes. Find out more on our website.



gcu.ac.uk/gsbs

School of *Engineering and Built Environment*

Our career-focussed programmes within the School of Engineering and Built Environment are designed to develop the skills you will need to excel in your chosen field. You will learn from ground-breaking research projects that make real world differences, and how innovations in technology, materials and fabrics are shaping tomorrow's world. You will have direct access to vast experience from supportive staff who are experts in their field; well-connected front-runners in areas such as engineering, IT security and web development, environmental science, telecommunications, surveying and building services. The School's connections with industry leaders and professional bodies in growing markets such as games design make GCU an exciting choice to further your knowledge and enhance your career prospects.

Our areas of educational excellence

Projects from within the School of Engineering and Built Environment are delivering change around the world: The Centre for Climate Justice is working to help improve access to water among the poorest and most vulnerable groups in Malawi and Zambia; while our research on construction standards has led to the production of smart sensors which will help provide comfortable living spaces, reduce power consumption and ultimately protect the environment.



Our research in the built environment, and the impact in this area, was rated as top 20 in the UK combining world-leading and internationally excellent research submissions.

Computing and Computer Networking

- MSc Advanced Internetwork Engineering
- MSc Big Data Technologies

Construction, Surveying and Property

- MSc Building Services Engineering
- MSc Quantity Surveying (Glasgow & London)

Engineering

- MSc Applied Instrumentation and Control
- MSc Electrical and Electronic Engineering
- MSc Electrical Power Engineering
- MSc Mechanical Engineering

Environmental

- MSc Climate Justice
- MSc Environmental Management (with options in Waste, Energy, Water and Oil and Gas)

International Project Management

- MSc International Project Management (with options in Energy, Construction Management and Oil and Gas)
- MSc International Project Management (Construction) (London only)

3D Design for Virtual Environments

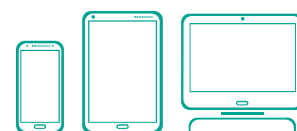
- MSc 3D Design for Virtual Environments

Professional accreditations

Many of our courses in the School of Engineering and Built Environment are accredited by professional bodies. Find out more on our website.

Graduate *careers*

Our graduates have successful careers around the world, in companies including: BAE Systems; Amey; Babcock International; Hewlett Packard; Rolls Royce; Network Rail and many more...



gcu.ac.uk/ebe

School of *Health and Life Sciences*

At GCU, 89% of our research activity in the allied health profession has been rated as world-leading (REF, 2014). Working alongside this research, and the healthcare sector, ensures the programmes we offer provide you with the experience and skills you need to excel in your field. Our staff will support you throughout your studies, giving you access to the latest knowledge in the sector, encouraging you to question the theory and conduct your own research.

Our areas of educational excellence

The School of Health and Life Sciences delivers life-changing projects to communities nearby in Glasgow and around the world: our Phelophepa Train project aims to provide accessible primary healthcare to people living in rural South Africa; The Grameen Caledonian College of Nursing helps to provide education and training to women from impoverished backgrounds in Bangladesh; while at Hunter Street Health Centre in Glasgow, our qualified students deliver eye care to homeless people and asylum seekers. These excellent real-world learning experiences will help to give you the best possible start to your career, and plenty of practical examples for employers that put you ahead of your peers.



Our students have access to state-of-the-art learning and research facilities throughout the School

Graduate *careers*

Many of our graduates have gone on to secure careers across the globe, in companies including: NHS; Marie Curie; The Australian Red Cross Blood Service; CBI Health Group; Health Canada; The Scottish Government; Ross Hall and many more...

Allied Health Sciences

- MSc Advanced Paramedic Practice
- MSc Diagnostic Imaging
- DPT Doctor of Physiotherapy (Pre-registration)
- PgC Education in Academic and Practice Settings
- MSc/PgD/PgC Medical Ultrasound
- MSc Occupational Therapy (Pre-registration)
- MSc Physiotherapy
- MSc Physiotherapy (Pre-registration)
- MSc Theory of Podiatric Surgery

Biological and Biomedical Sciences

- MSc Biomedical Science
- MSc Biomolecular and Biomedical Sciences
- MSc Clinical Microbiology
- MSc Diabetes Care and Management
- MSc Food Bioscience
- MSc Pharmacology

Nursing

- MSc Advanced Practice
- PgD Advanced Practice in District Nursing with Specialist Practitioner Qualification
- MPH Master of Public Health
- MSc Nursing Studies Adult (Pre-registration)
- MSc Nursing: Advancing Professional Practice
- PgD Specialist Community Public Health Nursing

Psychology

- DPsych Counselling Psychology
- MSc Forensic Psychology
- DPsych Health Psychology
- Graduate Diploma Psychology (Conversion)
- DPsych Sports and Exercise Psychology

Social Work

- MSc Social Work

Vision Sciences

- MSc Investigative Ophthalmology and Vision Research

Professional accreditations

Our courses and unique programmes help to keep you up to pace with the latest professional developments and offer accredited training recognised by the NHS and other professional bodies at international level. Find out more on our website.

GCU London

Established in 2010, GCU London is the postgraduate campus of Glasgow Caledonian University. We offer specialised Masters programmes that are closely aligned with industry to ensure that you are consistently up-to-date in your area of study. The campus is based at the heart of London's fashion and financial sectors, in Spitalfields, ensuring that we have a close relationship with our employers and business partners.

As one of the world's most famous, visited and influential cities, London is a popular destination for students. The capital city is a safe, friendly and supportive city that is home to more than 400,000 university students - 100,000 of which are international students from across the globe. Experience the diverse cultures from theatres to galleries, museums and historical monuments, and take advantage of the multitude of restaurants, bars and buzzing atmosphere.



"Life at GCU London as a student I think is generally very rich in variety, very inspiring and it is challenging in the right proportions. The campus itself is located directly in Spitalfields, next to Brick Lane which is amazing in the morning when you walk to university. You just feel very alive in the multicultural environment and the city is just very vibrant."

Franziska, MBA Luxury Brand Management Student.



GCU London is home to over 400 postgraduate students who study in a contemporary teaching environment with excellent facilities including teaching rooms, a library and workspaces. There's a Students' Association with an advice centre on campus, to represent and enable our students to have the best experience possible.

Programmes available:

- **MSc** Fashion Business Creation
- **MSc** Fashion and Lifestyle Marketing
- **MSc** Global Marketing
- **MSc** International Banking, Finance and Risk Management
- **MSc** International Management and Business Development
- **MSc** International Project Management (Construction)
- **MBA** Luxury Brand Management
- **MSc** Luxury Brand Marketing
- **MBA** Masters of Business Administration
- **MPH** Master of Public Health
- **MSc** Quantity Surveying
- **MSc** Risk Management

British School *of Fashion*

GCU London is also home to the British School of Fashion which offers four flagship programmes dedicated to the business of fashion. Our teaching is fully engaged with the fashion and luxury industry. We have worked with a diverse range of companies including Marks and Spencer, retailTRUST, Arcadia and All Saints as well as having notable speakers on campus to deliver guest lectures from Aston Martin, Fabergé, Loro Piana and Agent Provocateur to name just a few. As a school at the forefront of fashion business education in the UK, our mission is to educate, challenge and develop a new generation of fashion and luxury business leaders, innovators and entrepreneurs.



GCNYC

Founded by Glasgow Caledonian University, Glasgow Caledonian New York College leverages 143 years' of academic excellence to bring a distinctly global perspective to degree programmes located in the heart of downtown Manhattan.





Glasgow Caledonian New York College (GCNYC) offers a comprehensive range of Masters programmes designed to help you enter into industry as an expert in your sector. Our cutting-edge programmes mould our graduates to become responsible leaders with the analytical skills and clear personal values necessary to be truly globally minded. We are working to develop sustainable, entrepreneurial and socially-responsible solutions for business and society on a global scale.

The College is also home to the renowned Fair Fashion Center, which facilitates the incorporation of sustainable practices into fashion by operationalising systemic change, proving the business case for sustainability and turning global issues into industry opportunities.

GCNYC's Wooster Street campus is located in a newly renovated gallery-esque space in historic downtown Manhattan. Spread over two floors and designed to be flexible and adaptable to accommodate a range of teaching strategies. Its modern facilities include a library, formal classrooms and multipurpose rooms, as well as open areas for self-study and large lectures.

"GCNYC has a forward thinking ethos and specific perspective for the Fashion industry that I think imparts necessary tools to students for a changing future. Additionally, it is one of the few schools merging business, sustainability and fashion. For that reason, it made perfect sense for my career and personal ethics."

Michelle, Current student, GCNYC.

Masters of Science degrees available:

- MS International Fashion Marketing
- MS Risk, Resilience and Integrity Management
- MS Impact-Focused Business and Investing



Join our *postgraduate* *research* community

Research lies at the heart of GCU's learning and teaching, and the contribution we make to society is on the basis of a global community.

As well as postgraduate taught programmes, we offer a range of exciting research programmes designed to support your personal, vocational and intellectual development, equipping you to take demanding leadership roles.

Our academic staff work with over 500 research students, from more than 50 countries, who are studying towards a PhD, Professional Doctorate or Master of Research degree - creating an environment where you can exchange ideas, expertise and experiences.



gcu.ac.uk/postgraduateresearchstudy



Master of Research (MRes)

Combining broadly-based and subject specific training in research methodologies and transferable employment related skills, our MRes is designed for research students and professionals wanting to enhance their career or progress to doctoral study.

A truly flexible programme, you can complete the course in one year through full-time study or over two years of part-time study.

To find out more visit: gcu.ac.uk/masterofresearch



The Professional Doctorate

A part-time programme for professionals, the Professional Doctorate is an exciting and challenging alternative to a traditional PhD. The programme will enable you to conduct research at doctoral level that is relevant to both your professional interests and your organisational context.

The Professional Doctorate seeks to challenge your thinking and practice through relevant applied research that will benefit you, your organisation and wider society. We aim to equip you for demanding leadership roles and position you as a true leader in the sector.

To find out more, visit: gcu.ac.uk/professionaldoctorate

Doctor of Philosophy (PhD)

There are a variety of PhD opportunities at GCU, covering the areas of creating healthy lives for all, building inclusive societies and delivering sustainable environments. Our PhD students work with academic staff as apprentice researchers, and there are opportunities to join a research cluster in one of our Research Centres or to take part in externally-funded research projects.

This enables our students to become embedded within active research communities, providing solid support in each research discipline and an opportunity for cross-disciplinary and collaborative research.

To find out more, visit: gcu.ac.uk/phdstudyatgcu

Explore our *Glasgow Campus*

Our Glasgow campus has recently undergone a £32 million transformation and provides one of the best learning environments in the UK. Located right in the centre of Glasgow – there's everything a modern, international university has to offer.

Being a GCU student means gaining access to all of our modern facilities on campus, including:

The award-winning library - The Saltire Centre

The hub of the campus is the striking Saltire Centre, home to the University library. The building houses hundreds of thousands of books, 1,200 study spaces, over 350 computers, and the University's Archives and Special Collections.

Six on campus cafés

Including Scotland's largest single student refectory, which serves everything from a healthy breakfast to a hearty lunch at student-friendly prices. Our learning cyber café, Real@Caledonian, is a friendly environment where you can work and relax, packed with sofas, study desks and computer workstations for 190 students.





GCU in the heart of the world's friendliest city

- ▶ **Modern, light study spaces**
- ▶ **Gym and sports facilities**
- ▶ **State-of-the-art library**
- ▶ **Vibrant Students' Association**
- ▶ **Landscapes gardens**
- ▶ **24 hour computer labs**



Wi-Fi and laptop hire

GCU provides a free laptop vending machine service allowing students to study remotely around campus.

On campus accommodation

Our 'village in the city', Caledonian Court, is home to over 600 students and is perfectly located alongside the campus. You will live in a friendly, multi-cultural community in a safe and convenient location. Our modern and spacious flats are set within landscaped grounds. Desks, free Wi-Fi, an on-site launderette and large communal spaces means you will quickly feel at home and make new friends from all over the world.

The Arc Health and Fitness Gym

Keep your fitness on track in our bright, modern health and fitness centre. There are numerous affordable classes and activities that you can take part in as well as University sports clubs, a hair salon and an on-campus physiotherapist.





Discover *Glasgow*, Explore *Scotland*

Glasgow is a fantastic, affordable city that is home to more than 130,000 students. Friendly Glasgow boasts world-class museums, over 2,000 bars and restaurants, excellent sports facilities, theatres, architecture and vibrant nightlife. As a UNESCO City of Music, there's an incredibly vivid music scene. It's a shopper's paradise with more than 1,500 shops and has more green space per square mile than any other UK city.



Welcome to *Scotland*

A major reason to study at GCU and live in Glasgow, is our proximity to the rest of Scotland. When it comes to things to do in Scotland, you're limited only by your imagination. Scotland is home to more than 200 festivals every year, including the world's largest arts festival.

There are excellent places to visit, including castles, lochs and activity centres, and so many ways to explore, such as tours, outdoor activities and self-guided itineraries. From wild coastlines and pristine beaches to rolling valleys and towering mountains, Scotland's geography is a huge part of its appeal. For more information visit scotland.org

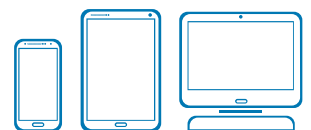


People's Palace on Glasgow Green

#SCOTLANDISNOW

Getting *here*

- ▶ **Campus located just minutes** *from train, subway and bus stations*
- ▶ **Glasgow Airport** *is a 15 minute drive from the city centre offering direct UK and international flights*
- ▶ **Perfectly located for motorway** *and transport links*



gcu.ac.uk/postgraduate

A person wearing a dark blue jacket and a dark cap is sitting on a red sofa. The background is a bright room with large windows and vertical blinds. The text is overlaid on a red arrow-shaped graphic pointing to the right.

How to *apply*

We would love to welcome you to GCU. Our Admissions team is here to help you through the process.

Here are some of our most frequently asked application questions, but if you want to talk to someone directly, simply get in touch today on: +44(0)141 331 8630.



Top tip - when you are looking online to apply, don't forget to look for any closing date

Interested *in a taught programme?*

The first step to most of our postgraduate course applications is online at gcu.ac.uk/study. For some programmes there can be a different application process, this will be explained on the course page of our website. We are here to make the application process as easy as possible and are happy to help at any point. If you have any questions or concerns, please contact enquiries@gcu.ac.uk or call +44(0)141 331 8630. If you are interested in a research degree, please see page 26.

What happens *after I apply?*

There are a number of steps that we are on hand to help you with during your application process.

Receive your offer

If you received and accept an unconditional offer - you have a definite place at GCU, congratulations! We then send you important information regarding your registration and the exciting induction programme we have planned for you.

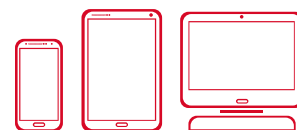
If you have received a conditional offer, that is great news - you have a place to study at GCU. All you need to do is meet the requirements stated in your offer. Once you fulfil these conditions, simply email admissions@gcu.ac.uk and your offer will be updated to an unconditional offer.

Accept your place

You have received your offer, now you simply need to accept it. Email admissions@gcu.ac.uk to let them know you have accepted and we will ensure your place is waiting for you.

Pay your deposit

If you were asked to pay a deposit in your offer, we ask you to pay once you have accepted your place. You can pay your fees in a variety of ways, visit: gcu.ac.uk/feepayments for more information.



gcu.ac.uk/postgraduate/howtoapply



Visa applications *for International students*

If you are an international student and you are providing your own funding to study at GCU you will need to prepare your financial evidence and original documents. One of the requirements for your visa application is to keep enough money in your bank account to cover the costs of studying in the UK and you need to ensure the funds are held for 28 consecutive days before you apply for your visa.

One of the key features of the student visa process is the need for your Confirmation of Acceptance for Studies (CAS) number. This is a unique reference number confirming your place at GCU that you must quote in your visa application. Our Visa Team can help

guide you through the process of obtaining a CAS number. You can contact: visa@gcu.ac.uk for more information.

Once you have received your CAS from us, you are now ready to arrange a student visa and you can find details of how to apply for a Tier 4 visa at: [gcu.ac.uk/student/international/visainformation](https://www.gcu.ac.uk/student/international/visainformation)

Please note that we need you to either pay your £3,500 deposit or provide evidence of financial sponsorship before we can issue you with a CAS number.



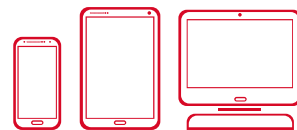
I want to apply for a *postgraduate research qualification*

What do I do now?

If you would like to complete a PhD or Professional Doctorate, or simply find out more about what areas you may specialise in - the best place to start is with one of our research contacts who can advise about the current opportunities available, including developing your own research project. Full information can be found at: gcu.ac.uk/research/phdresearchopportunities

It is then just a case of filling in your application online at:
gcu.ac.uk/postgraduate/howtoapply

If you have any questions or concerns, or simply need some advice or a helping hand, please contact our admissions team at:
researchapplications@gcu.ac.uk



gcu.ac.uk/postgraduate/howtoapply

Finances and *scholarships*

Our generous postgraduate funding opportunities help with the cost of course fees and provide additional opportunities that you may not have considered. We are committed to ensuring our postgraduate degree courses are accessible and inclusive, providing life-changing opportunities to all.

Postgraduate loans for students from Scotland and the European Union

The Student Awards Agency Scotland (SAAS) provides tuition fee loans for full-time postgraduate students from Scotland and the European Union up to a maximum of £5,500. Additionally, full-time postgraduate students from Scotland can also apply to SAAS for a living-cost loan up to £4,500, full details can be found at: saas.gov.uk/full_time/pg

Postgraduate Loan Scheme for students from England, Wales and Northern Ireland

If you are starting a Masters degree at Glasgow Caledonian University, you could be eligible for a Postgraduate Loan of up to £10,609 to help with course fees and living costs. For the most up to date information on these loans, visit: gov.uk/funding-for-postgraduate-study

Scholarships

As well as continuing your studies, developing new ideas and innovations, a scholarship from Glasgow Caledonian University can support your tuition costs, make travel and living costs more manageable and open up opportunities to work with those who inspire you and those who are inspired by you. For full information on the scholarships available visit: gcu.ac.uk/scholarships/postgraduate

International funding

Fees for international students vary by degree programme. These include tuition fees, examination costs and library membership. Please visit the degree programme webpage for full details on costs and available scholarships and funding: gcu.ac.uk/study/postgraduate





Winning the prestigious GCU Ambassador Studentship Award is a great honour for me... it has allowed me to open up new doors to learn and excel in my career. I am so grateful for this amazing opportunity.

Saadia, Postgraduate Ambassador Studentship Award



gcu.ac.uk/postgraduate/feesandfunding

Connect with us *on social*



Connect
[GlasgowCaledonianUniversity](#)



Experience
[glasgow_caledonian_university](#)



Network
[school/glasgow-caledonian-university](#)



Watch
[@gcutoday](#)



Engage
[@gcutoday](#)





Student *support*

We believe that your life as a student isn't just about getting a great education. We want you to enjoy your time here from a cultural and social point of view too. That's why we have a range of student services, including our Campus Life team to support you. Plus, our dedicated Student Life team organise a wide variety of social events to help you meet other students and enjoy your new life at GCU.

The Best Support on Campus

At GCU, we offer a team of professional careers advisors who can guide you through every stage of your learning journey. You will be given lots of one-to-one support in finding opportunities by taking part in regular networking events or coming to hear from guest speakers and master classes. You can choose to study a language to enhance your international employer profile and connect with a wide network of leading global employers through careers fairs, employer presentations and GCU's online vacancies portal. Through our Students' Association you can also connect and meet new people at our Re:Union Bar & Grill, or by joining one of the Students' Association's 60 Societies or 35 Sports Clubs.

You will receive further information on welcome activities once you have accepted your offer to study at the University, as well as details of our VIP airport greet service. We want you to feel like part of the community even before you join us at GCU, therefore why not interact with current and new students through our Facebook groups. For more information visit gcu.ac.uk/student

Support for International Students

INTO GCU offers academic preparation courses and English language programmes designed specifically for international students. You can choose from a wide range of degree and academic preparatory programmes to support your entry to GCU and adapt to living and studying in a UK university environment.

The INTO GCU centre is located at the heart of the University campus, with excellent facilities, a suite of purpose-built teaching rooms and offices, and Wi-Fi throughout. INTO GCU students are considered very much part of the University community and have access to all of University's campus facilities and services. When you study with us you will find a wealth of support available to you. Find out more at: gcu.ac.uk/into

We also have our Visa, Immigration Support and Advice (V.I.S.A) Team on campus who are a GCU professional service dedicated to supporting you, and your families, while you are studying at GCU. Find out more about this service at: gcu.ac.uk/visa

As a GCU graduate you will excel as a professional in your field. You will be entrepreneurial, confident, socially driven and capable of fulfilling leadership roles in a global context. You will push boundaries and solve problems to achieve positive change in the world around you.

We think you have what it takes – now is the time to start your story with GCU...



Glasgow Caledonian
University

University for the Common Good

Glasgow

Cowcaddens Road, Glasgow
G4 0BA, Scotland,
United Kingdom

www.gcu.ac.uk

London

40 Fashion Street, London
E1 6PX, England,
United Kingdom

www.gculondon.ac.uk

New York

64 Wooster Street,
New York, NY 10012,
USA

www.gcnyc.com

T: +44 (0)141 331 8630 E: studentenquiries@gcu.ac.uk