



Canterbury
Christ Church
University

Give your career the Postgraduate edge

[canterbury.ac.uk/
postgraduate-edge](https://canterbury.ac.uk/postgraduate-edge)

POSTGRADUATE
edge

Helping **you** to make a difference

At Canterbury Christ Church University, we believe that education changes lives for the better. We offer courses in many subjects from teacher education and nursing, to arts and humanities and social sciences, and our students and graduates are playing a really important part in communities across the UK and internationally.

Our postgraduate students are working in schools, hospitals, the creative industries, business and sciences, sharing their knowledge and skills, and contributing extensively to their economies

We are a modern, multi-campus University with around 17,000 students and nearly 2,000 staff. We've been around for more than 50 years and we're one of only a handful of universities to have a campus in a World Heritage Site – within walking distance of the high street and the internationally important Canterbury Cathedral.

For a full list of Open Evenings and to register, go to:
canterbury.ac.uk/postgraduateedge

POSTGRADUATE
edge



Give yourself the Postgraduate edge



UK top 20 for teaching staff qualifications

It is important that you get the most from your postgraduate university experience, and the investment that you will be making. So you need to feel confident in your choice and be sure that the university you choose has the right kind of environment for you to thrive in – with a friendly and supportive postgraduate community and highly experienced academics whose interests closely reflect your own.

This guide is just an introduction to what we can offer you, but we hope that it gives you a flavour of Canterbury Christ Church University and encourages you to get in touch with us to discuss your interests and options in more detail.

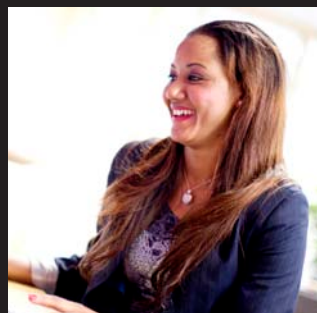
A postgraduate degree can help advance your career and is becoming essential for many professions

- It can open doors to a career in academia
- It allows you to unlock your potential and immerse yourself in a subject you are passionate about

Professional teaching informed by leading edge research

- Quality teaching from lecturers with vast experience in the commercial, professional and academic world
- Good staff-to-student ratios to ensure you get the support you need
- A range of courses developed with industry and public sector organisations within the education, teaching, business, health, law and psychology spheres
- 98% of postgraduate students at Canterbury Christ Church University are in employment or further training within six months of graduating*

*Destination of Leavers from Higher Education Survey 2014/15



Nearly 90% of our research submitted to the 2014 Research Excellence Framework (REF) was assessed as world leading, internationally excellent or internationally recognised.

Research with impact

Our research and teaching says a lot about who we are and how we're making a difference in society. Our work is linked to important social issues from research around migration and HIV diagnosis, to cybercrime and stem cell research. And while our campuses and centres are in Kent and Medway, a lot of what we do takes us across the globe, with major partnerships in Palestine, Greece and Vietnam, to name but a few, which makes us both a national and international university.

For more information, go to:

www.canterbury.ac.uk/research

Choosing your route

Our postgraduate courses are broadly split into two groups. Find out more about the different qualification options:



It is important that you choose the route that best suits your learning style, career aspirations and existing commitments. Entry requirements vary between different courses and you can find more information on our website.

Full-time or part-time?

Many of our postgraduate courses are offered on both a full-time and part-time basis. Part-time taught courses generally take twice as long as full-time courses to complete, but they also allow postgraduates to work during their studies and balance their life commitments.

Taught courses

We offer a number of different postgraduate taught qualifications

MA, MSc and MBA

Your course will comprise a series of taught modules, delivered through lectures, seminars and tutorials. You may be assessed through examinations, coursework and group projects, and there will probably be a research element concluding in a dissertation.

This type of study will suit you if you learn through a more structured approach and enjoy working closely with your tutors and fellow students.

PG Dip and PG Cert

If you wish to study your chosen subject at Masters level but don't want to do a dissertation, a postgraduate certificate or diploma may be an option. They are often vocational in nature.

Postgraduate Primary Initial Teacher Education

Study for a Postgraduate Certificate in Education (PGCE) here at one of the largest and most successful providers of postgraduate initial teacher education (ITE) in the country. The PGCE is a university-based course that we offer in partnership with a large number of schools who we work with on all our teacher training courses, including School Direct and School Centred Initial Teacher Training (SCITT).

For more information, please visit the Train to Teach section of our website.

www.canterbury.ac.uk/train-to-teach

Postgraduate by research

You can study for a research degree either full-time or part-time. In fact, many of our researchers are professionals who have returned to study part-time. Most of your time will be devoted to the individual pursuit of a research project in an area of your choosing. There is no coursework and it will culminate in a written thesis which is examined at the end of the course.

If you enjoy independent study and want to explore a specific subject area a postgraduate by research degree could be the best option for you. We encourage personal, creative research subjects, giving you the opportunity to pursue research degrees that you wouldn't find anywhere else.

Masters by Research

Often studied as a stepping stone to a PhD, this course involves undertaking a research project and will include training in research methods relevant to your chosen discipline.

MPhil

If you want to study for a PhD, you will first need to register for an MPhil. If your research meets the required standard, you will be able to transfer to a PhD course after 12-18 months. You can also take an MPhil as a qualification in its own right. It requires a shorter thesis than a PhD, but you will still need to complete an oral examination (viva) to qualify.

PhD

The Doctorate of Philosophy (PhD) is the highest qualification that a student can attain. It is often the first stage of an academic research career and requires completion of a thesis which contributes new knowledge to a subject in which you have a passionate interest.

Research areas

To be accepted for an MPhil or PhD course you will need to submit a research proposal.

Before you do this, you need to discuss your ideas with an academic (who may become your academic supervisor) whose research interests complement your own.

Second
largest
programme
in the UK
DCLinPsychol

Specialist Doctorates

These qualifications are for those who already have Masters level qualifications and considerable expertise in their professional field, and want to do PhD level study in that discipline.

■ Doctorate in Clinical Psychology (DCLinPsychol)

The Doctorate in Clinical Psychology at Canterbury Christ Church University is one of the oldest and most established clinical training programmes in the UK. Established in 1972, it is also the second largest programme in the country.

It combines clinical, academic and research training to promote the highest quality of professional practice. Career prospects after completing the Doctorate are excellent.

The course has been fully approved and accredited by the UK Health and Care Professions Council (HCPC) and the British Psychological Society (BPS).

■ Doctorate of Education (Ed.D)

The Doctorate of Education offers the advantages of working within a cohort of fellow researchers, while at the same time becoming involved in a substantial individual research thesis of your own. The sense of community, of collaboration in the development of ideas and the opportunity to explore in depth aspects of research, policy and professional practice, is at the core of this course. The division of the Ed.D into a taught stage and a thesis stage provides maximum flexibility in that you can develop existing interests and discover and investigate new areas.

■ PhD in Professional Practice: Psychological Perspectives

This PhD in Professional Practice: Psychological Perspectives is aimed at providing experienced professionals with the opportunity to develop advanced research skills and knowledge in the theory and practice of your discipline, and to pursue original lines of research in areas of direct relevance to your work. This is a course of reflective review and research-based professional development for experienced practitioners, managers, academics and other professionals. The course has been specifically designed so that practitioners may integrate the completion of the course with their working lives, and both the work place and the individual will benefit from the outcomes.

The Graduate School

All of our research degrees are managed by the Graduate School, which is based on our Canterbury Campus. It is your first point of contact if you are considering a postgraduate by research qualification.

The Postgraduate Research Association provides great social and academic opportunities, plus mentoring and support.

www.canterbury.ac.uk/graduateschool

We offer a dedicated room on campus for research students, where you will have exclusive access to IT facilities and other resources.

International Students

Our International Office and Admissions Team are on hand to help you through the application process and if your first language isn't English our Academic English Service offers workshops and tutorials to help you to develop your understanding of the language. And throughout your time with us our team of student advisers will be ready to support you in any way – they'll be just a call away.

In your first year as a postgraduate student we offer you priority if you wish to live in our comfortable and homely accommodation. We'll give you plenty of opportunities to experience life in the UK and have a good range of clubs and societies for you to join, so get involved, have fun and make the most of your time with us!

www.canterbury.ac.uk/international



Study at three campuses

When you become a postgraduate student at Christ Church you will study in one of three distinctive and unique campuses in Kent and Medway.

Canterbury

Medway

Tunbridge Wells



Accommodation

Although, as a postgraduate student you are not guaranteed a place in university accommodation unless you meet the criteria for Special Accommodation, or you are travelling from outside of the UK to study at Canterbury, we will provide guidance and help for anybody who would like to stay in private accommodation.

We are here to support you

There's a lot of support available for postgraduate students at Christ Church. For example, you can get assistance with finance, health and wellbeing, careers and employability, childcare and faith, religion and sexuality.

Careers and employability

Our Career Development Advisers deliver tailored lectures and workshops, to equip you with the necessary skills and competencies for your chosen career. Our service actively supports postgraduate students who are looking for expert advice in changing careers or retraining.

Our staff are available to check CVs, personal statements, applications, and discuss short and long term career development. The University has a dedicated careers information system called The CORE, where you will find hundreds of useful resources.

If you are thinking about starting your own business, our Student Enterprise Manager provides tailored support on all elements of start-ups and self-employment.

For more information on all services available to you, please visit

www.canterbury.ac.uk/students/careers-and-jobs



Academic Learning Development

Our Academic Learning Development service provides academic support for all students. You don't have to be struggling with your studies to benefit from our guidance. Right from the start, you'll have access to online resources and the opportunity to meet with our staff to gain support in developing and enhancing your postgraduate academic skills.

Disability, Specific Learning Difficulty and Long Term Health Issues

We recognise that our students are individuals and often have very different needs. Our Disability Advice Team is able to support you every step of the way – if you are facing (or potentially facing) disabling barriers to achievement.

Faith

As a Church of England Foundation University which welcomes students and staff of all faiths and none, we actively promote diversity and equality of opportunity. We're proud that we have postgraduate students from across the UK and around the world studying at Christ Church, exchanging ideas, values and experiences.

All services offered by Graduate
Employment and Career
Development are available to you
for up to three years after you
finish your Postgraduate studies

Financing your studies is easy

Postgraduate Masters Student Loans

There has never been a better time to consider postgraduate study as it is now easier than ever to get funding for your degree. UK residents can access loans of up to £10,000 for postgraduate study through Student Finance England which you will pay back as you earn.

The loans will be paid directly to you by the Student Loans Company and will be subject to both personal and course eligibility criteria. Courses may be taught or research based, and include professional Masters courses such as MBAs. There are no subject restrictions.

For more information please visit

www.canterbury.ac.uk/postgraduate-masters-student-loans



Fees may vary depending on the course. For the most up-to-date information please check our website

Scholarships and Bursaries

A small number of scholarships are awarded by the University each year for full-time MPhil/PhD students. They cover fees and a maintenance grant and are advertised in early February with a deadline in April. For further information, visit www.canterbury.ac.uk/funding-for-postgraduate-research-degrees

Individual faculties, schools and research centres may also offer scholarships. Information can be found on the relevant course web pages.

**20%
OFF**

If you are a UK or EU Christ Church alumni, you can also get a 20% discount off Canterbury Christ Church University postgraduate fees

You can find more information about the bursaries we offer on our website.

PGCE and School Direct

Depending upon your route into teaching, and subject you may be eligible for a bursary or a salary or you may be able to apply for a scholarship. Find out more at

www.canterbury.ac.uk/2017-18-entry-financial-support

International Student Scholarship

Eligible international students are entitled to an award of £1,500 for the first year of taught postgraduate study at Christ Church, (See website for more details).

www.canterbury.ac.uk/international/funding-and-scholarships

Getting started

How to apply and
entry requirements



Postgraduate Taught

You can apply directly for many of our courses using our Online Application Portal. If your course is eligible for online application, it will be stated on the course page under the 'How to apply' section. See our website for more details

www.canterbury.ac.uk/apply-online

If you are an international student please visit:

www.canterbury.ac.uk/international/applying-for-postgraduate-taught-degrees

Alternatively, you can email or call our friendly International team.

Email: ipo@canterbury.ac.uk

Tel: +44 (0)1227 782222

Postgraduate Research Degrees

All applications are managed by our Graduate School. For more information, please visit the web page or contact us directly.

Tel: 01227 782701

Email: graduateschool@canterbury.ac.uk

www.canterbury.ac.uk/postgraduate-research

Entry Requirements

These vary according to the course and you can find individual entry requirements on the relevant course page on our website.

Guide to courses

Our **post-qualification** courses are designed for those who are already registered in their chosen profession and looking to specialise and develop their skills and knowledge further.

Our **pre-qualification** postgraduate courses are for students planning to enter into a health and/or social care role and who already possess an honours degree.

Course	Short URL	Qualification	Course Type
American Studies, MA by Research	www.canterbury.ac.uk/pg/american-studies		PGR
American Studies, MPhil/PhD	www.canterbury.ac.uk/pg/american-studies		PGR
Applied Ecology and Environmental Management, MSc	www.canterbury.ac.uk/pg/ecology-environment		PGT
Applied Exercise and Health Science, MSc	www.canterbury.ac.uk/pg/exercise-health		PGT
Applied Health and Fitness, MSc by Research (Social and Applied Sciences)	www.canterbury.ac.uk/pg/health-fitness		PGR
Applied Linguistics, MPhil, PhD	www.canterbury.ac.uk/pg/applied-linguistics		PGR
Applied Psychology, MSc by Research (Social and Applied Sciences)	www.canterbury.ac.uk/pg/applied-psychology		PGR
Archaeology, MA by Research *Subject to validation	www.canterbury.ac.uk/pg/archaeology		PGR
Archaeology, MPhil/PhD	www.canterbury.ac.uk/pg/archaeology		PGR
Arts and Cultural Management, MA	www.canterbury.ac.uk/pg/arts-cultural-management		PGT
Assessment Only, Route to QTS	www.canterbury.ac.uk/pg/assessment-only		PGT
Biological Sciences, MPhil/PhD	www.canterbury.ac.uk/pg/biologicalsciences		PGR
Biosciences, MSc by Research (Social and Applied Sciences)	www.canterbury.ac.uk/pg/biosciences		PGR
Business and Management, MPhil/PhD	www.canterbury.ac.uk/pg/business-and-management		PGR
Career Management, MA	www.canterbury.ac.uk/pg/career-management		PGT
Cartography and Infographics, MSc by Research (Social and Applied Sciences)	www.canterbury.ac.uk/pg/cartography-infographics		PGR
Certificate in English Language Teaching (CELTA), Certificate	www.canterbury.ac.uk/pg/celta		PGT
Chemistry, Subject Knowledge Enhancement (SKE)	www.canterbury.ac.uk/pg/chemistry		PGT
Clinical Psychology Foundations* MSc *Subject to Validation	www.canterbury.ac.uk/psychology-foundation		PGT
Clinical Psychology, DClinPsy	www.canterbury.ac.uk/pg/clinical-psychology		PGR

Course	Short URL	Qualification	Course Type
Clinical Reporting, MSc / PgDip / PgCert	www.canterbury.ac.uk/pg/clinical-reporting	▲	PGT
Coaching for Leadership, Postgraduate Certificate	www.canterbury.ac.uk/pg/coaching-for-leadership		PGT
Cognitive Behavioural Therapy (High Intensity), Postgraduate Diploma	www.canterbury.ac.uk/pg/cbt-hi		PGT
Cognitive Behavioural Therapy, MSc	www.canterbury.ac.uk/pg/cbt		PGT
Collaborative Transformation, Postgraduate Certificate	www.canterbury.ac.uk/pg/collaborative-transformation		PGT
Computing, MSc by Research (Social and Applied Sciences)	www.canterbury.ac.uk/pg/computing-msc		PGR
Computing, Subject Knowledge Enhancement (SKE)	www.canterbury.ac.uk/pg/computing-ske		PGT
Computing, MPhil/PhD	www.canterbury.ac.uk/pg/computing		PGR
Contemporary Studies in Childhood, Youth and Parenthood, MPhil/PhD	www.canterbury.ac.uk/pg/contemporary-studies-in-childhood-youth-and-parenthood		PGR
Creative Writing: Prose Fiction, MA	www.canterbury.ac.uk/pg/creative-writing		PGT
Criminal Justice, MSc by Research (Social and Applied Sciences)	www.canterbury.ac.uk/pg/criminal-justice		PGR
Criminal Justice, MPhil/PhD	www.canterbury.ac.uk/pg/criminal-justice		PGR
Criminology, MSc by Research (Social and Applied Sciences)	www.canterbury.ac.uk/pg/criminology		PGR
Dance Movement Psychotherapy, MA / PgDip / PgCert	www.canterbury.ac.uk/pg/dmp	◆	PGT
Digital Forensics and Cybersecurity, MSc by Research (Social and Applied Sciences)	www.canterbury.ac.uk/pg/forensics-cybersecurity		PGR
Early Childhood Education, MA	www.canterbury.ac.uk/pg/ece		PGT
Ecology, MSc by Research (Social and Applied Sciences)	www.canterbury.ac.uk/pg/ecology		PGR
Education Leadership and Management, MBA	www.canterbury.ac.uk/pg/elm		PGT
Education, Doctorate	www.canterbury.ac.uk/pg/education-doctorate		PGR
Education, MA	www.canterbury.ac.uk/pg/education		PGT
Education, MPhil/PhD	www.canterbury.ac.uk/pg/education		PGR
English Literature, MA by Research	www.canterbury.ac.uk/pg/english-literature-research		PGR
English Literature, MA	www.canterbury.ac.uk/pg/english-literature		PGT

KEY:

▲ Post Qualification ◆ Pre Qualification **PGT** Postgraduate Taught **PGR** Postgraduate Research

Course	Short URL	Qualification	Course Type
English Literature, MPhil/PhD	www.canterbury.ac.uk/pg/english-literature		PGR
Environmental Geography, MSc by Research (Social and Applied Sciences)	www.canterbury.ac.uk/pg/environmental-geography		PGR
European Politics (with Diplomacy Specialism), MSc	www.canterbury.ac.uk/pg/european-politics		PGT
Events, MSc by Research (Social and Applied Sciences)	www.canterbury.ac.uk/pg/events		PGR
Film Studies, MPhil/PhD	www.canterbury.ac.uk/pg/film-studies		PGR
Forensic Investigation, MSc by Research (Social and Applied Sciences)	www.canterbury.ac.uk/pg/forensic-investigation		PGR
French, Subject Knowledge Enhancement (SKE)	www.canterbury.ac.uk/pg/french		PGT
Geography, MPhil/PhD	www.canterbury.ac.uk/pg/geography		PGR
Geospatial Analysis, MSc by Research (Social and Applied Sciences)	www.canterbury.ac.uk/pg/geospatial-analysis		PGR
German, Subject Knowledge Enhancement (SKE)	www.canterbury.ac.uk/pg/german-ske		PGT
Global and International Education, MA	www.canterbury.ac.uk/pg/gie		PGT
Guidance and Support, MA by Research	www.canterbury.ac.uk/pg/guidance-support		PGR
Health and Wellbeing, MPhil/PhD	www.canterbury.ac.uk/pg/health-wellbeing		PGR
Health and Wellbeing, MSc / PgDip / PgCert	www.canterbury.ac.uk/pg/health-wellbeing	▲	PGT
Healthcare Leadership and Management, MBA	www.canterbury.ac.uk/pg/hlm		PGT
History, MA by Research	www.canterbury.ac.uk/history/postgraduate-study		PGR
History, MPhil, PhD	www.canterbury.ac.uk/pg/history		PGR
Human Geography, MSc by Research (Social and Applied Sciences)	www.canterbury.ac.uk/pg/human-geography		PGR
Human Resource Management, CIPD Advanced Diploma	www.canterbury.ac.uk/pg/hrm-cipd		PGT
Human Resource Management, MA	www.canterbury.ac.uk/pg/hrm		PGT
International Business, MSc	www.canterbury.ac.uk/pg/international-business		PGT
International Relations (with Security Studies Specialism), MSc	www.canterbury.ac.uk/pg/international-relations		PGT
Law, MSc by Research (Social and Applied Sciences)	www.canterbury.ac.uk/pg/law		PGR
Leisure, MSc by Research (Social and Applied Sciences)	www.canterbury.ac.uk/pg/leisure		PGR
Management Studies, MA / PgDip / PgCert	www.canterbury.ac.uk/pg/management-studies		PGT
Master of Business Administration, MBA	www.canterbury.ac.uk/pg/mba		PGT

Course	Short URL	Qualification	Course Type
Master of Music, MMus	www.canterbury.ac.uk/pg/mom		PGT
Mathematics Specialist Teacher, PgCert	www.canterbury.ac.uk/pg/mathematics-specialist-teacher		PGT
Mathematics, Subject Knowledge Enhancement (SKE) (Primary)	www.canterbury.ac.uk/pg/maths/primary		PGT
Mathematics, Subject Knowledge Enhancement (SKE) (Secondary)	www.canterbury.ac.uk/pg/maths		PGT
Media, Art and Design, MA by Research	www.canterbury.ac.uk/pg/mad		PGR
Media and Cultural Studies, MPhil/PhD	www.canterbury.ac.uk/pg/media-and-cultural-studies		PGR
Medical Imaging, MSc / PgDip / PgCert	www.canterbury.ac.uk/pg/medical-imaging	▲	PGT
Mental Health, MSc	www.canterbury.ac.uk/pg/mental-health	▲	PGT
Music, MPhil/PhD	www.canterbury.ac.uk/pg/music		PGR
Myth, Cosmology and the Sacred, MA	www.canterbury.ac.uk/pg/mcs		PGT
National Award for SEN Co-ordination, Postgraduate Certificate	www.canterbury.ac.uk/pg/senco		PGT
Performing Arts, MPhil/PhD	www.canterbury.ac.uk/pg/performing-arts		PGR
PGCE 7-14 Years	www.canterbury.ac.uk/pg/pgce-7-14		PGT
PGCE Applied Business Studies (14-19)	www.canterbury.ac.uk/pg/pgce-abs		PGT
PGCE Art and Design (Secondary)	www.canterbury.ac.uk/pg/pgce-ad		PGT
PGCE Citizenship (Secondary)	www.canterbury.ac.uk/pg/pgce-citizenship		PGT
PGCE Computing (Secondary)	www.canterbury.ac.uk/pg/pgce-computing		PGT
PGCE Early Childhood Education with recommendation for Early Years Teacher Status	www.canterbury.ac.uk/pgce-early-childhood-education-with-early-years-teacher-status		PGT
PGCE English (Secondary)	www.canterbury.ac.uk/pg/pgce-english		PGT
PGCE Geography (Secondary)	www.canterbury.ac.uk/pg/pgce-geography		PGT
PGCE Health and Social Care (14-19)	www.canterbury.ac.uk/pg/pgce-hsc		PGT
PGCE History (Secondary)	www.canterbury.ac.uk/pg/pgce-history		PGT
PGCE Leisure and Tourism (14-19)	www.canterbury.ac.uk/pg/pgce-lt		PGT
PGCE Mathematics (Secondary)	www.canterbury.ac.uk/pg/pgce-maths		PGT
PGCE Modern Foreign Languages (Secondary)	www.canterbury.ac.uk/pg/pgce-mfl		PGT
PGCE Music (Secondary)	www.canterbury.ac.uk/pg/pgce-music		PGT

KEY:

▲ Post Qualification

◆ Pre Qualification

PGT Postgraduate Taught

PGR Postgraduate Research

Course	Short URL	Qualification	Course Type
PGCE Physical Education (Secondary)	www.canterbury.ac.uk/pg/pgce-pe		PGT
PGCE Physics with Mathematics (Secondary)	www.canterbury.ac.uk/pg/pgce-pm		PGT
PGCE Post Compulsory Education	www.canterbury.ac.uk/pg/pgce-pce		PGT
PGCE Primary – Full-time	www.canterbury.ac.uk/pg/pgce-primary		PGT
PGCE Primary Modular	www.canterbury.ac.uk/pg/pgce-primary-modular		PGT
PGCE Primary with Mathematics Specialism	www.canterbury.ac.uk/pg/pgce-primary-maths		PGT
PGCE Psychology (14-19)	www.canterbury.ac.uk/pg/pgce-psychology		PGT
PGCE Religious Education (Secondary)	www.canterbury.ac.uk/pg/pgce-re		PGT
PGCE Sciences-Biology, Chemistry or Physics (Secondary)	www.canterbury.ac.uk/pg/pgce-sciences		PGT
Physical Education and Physical Activity MA by Research	www.canterbury.ac.uk/pg/physical-education-physical-activity		PGR
Physician Associate Studies, PG Diploma	www.canterbury.ac.uk/pg/pas	◆	PGT
Physics, Subject Knowledge Enhancement (SKE)	www.canterbury.ac.uk/pg/physics		PGT
Policing, MSc by Research	www.canterbury.ac.uk/pg/policing		PGR
Policing, MSc by Research (Social and Applied Sciences)	www.canterbury.ac.uk/pg/policing-research		PGR
Policing, MSc	www.canterbury.ac.uk/pg/policing		PGT
Policing and Criminal Justice, MA	www.canterbury.ac.uk/pg/policing-justice		PGT
Politics (with Migration and Minorities Studies Specialism), MSc	www.canterbury.ac.uk/pg/politics		PGT
Politics and International Relations, MSc by Research (Social and Applied Sciences)	www.canterbury.ac.uk/pg/politics-msc		PGR
Politics and International Relations, MPhil/PhD	www.canterbury.ac.uk/pg/politics		PGR
Practice Teacher Award, Postgraduate Level 7	www.canterbury.ac.uk/pg/pta		PGT
Professional Practice: Psychological Perspectives, MPhil/PhD	www.canterbury.ac.uk/pg/professional-practice		PGR
Psychology (Conversion Course), MSc	www.canterbury.ac.uk/pg/psychology		PGT
Psychology, MSc by Research (Social and Applied Sciences)	www.canterbury.ac.uk/pg/applied-psychology		PGR
Psychology, MPhil/PhD	www.canterbury.ac.uk/pg/psychology		PGR
Public Health, MSc	www.canterbury.ac.uk/pg/public-health	▲	PGT
School Direct, PGCE	www.canterbury.ac.uk/pg/school-direct		PGT
Social and Emotional Learning, Postgraduate Certificate	www.canterbury.ac.uk/pg/cert-sel		PGT
Social Work, MA	www.canterbury.ac.uk/pg/social-work	◆	PGT

Course	Short URL	Qualification	Course Type
Sociology, MSc by Research (Social and Applied Sciences)	www.canterbury.ac.uk/pg/sociology-msc		PGR
Sociology: Global Inequalities and Comparative Social Policy, MSc	www.canterbury.ac.uk/pg/sociology		PGT
Sociology, MPhil/PhD	www.canterbury.ac.uk/pg/sociology		PGR
Spanish, Subject Knowledge Enhancement (SKE)	www.canterbury.ac.uk/pg/spanish		PGT
Special Needs and Inclusion, MA	www.canterbury.ac.uk/pg/sni		PGT
Specialist Community Public Health Nursing, Graduate Diploma / BSc Post Registration	www.canterbury.ac.uk/pg/scphn	▲	PGT
Speech and Language Therapy, PG Diploma	www.canterbury.ac.uk/pg/slt	◆	PGT
Sport and Exercise Psychology, MSc by Research (Social and Applied Sciences)	www.canterbury.ac.uk/pg/sport-psychology		PGR
Sport and Exercise Science, MSc by Research (Social and Applied Sciences)	www.canterbury.ac.uk/pg/sport-sciences		PGR
Sport and Exercise Science, MPhil/PhD	www.canterbury.ac.uk/pg/sportandexercisesciences		PGR
Sport Policy and Development, MSc by Research (Social and Applied Sciences)	www.canterbury.ac.uk/pg/sports-policy		PGR
Surgery (Ophthalmology*, Orthopaedics and Regenerative Medicine/ Otorhinolaryngology/ Urology), MCh * Subject to validation	www.canterbury.ac.uk/pg/surgery	▲	PGT
Teaching English to Speakers of Other Languages (TESOL), MA / PgDip	www.canterbury.ac.uk/pg/tesol		PGT
Teaching Mathematics: Functional Skills/Numeracy, Diploma	www.canterbury.ac.uk/pg/teaching-maths		PGT
Theology and Religious Studies, MA by Research	www.canterbury.ac.uk/pg/trs		PGR
Theology and Religious Studies, MPhil/PhD	www.canterbury.ac.uk/pg/theology-and-religious-studies		PGR
Tourism and Event Management, MSc	www.canterbury.ac.uk/pg/tem		PGT
Tourism MSc by Research (Social and Applied Sciences)	www.canterbury.ac.uk/pg/tourism		PGR
Tourism Studies MPhil/PhD	www.canterbury.ac.uk/pg/tourism-studies		PGR
Transformational Leadership (Teach First), MA	www.canterbury.ac.uk/pg/tl-tf		PGT
Transformational Leadership, MA	www.canterbury.ac.uk/pg/tl		PGT
Urban and Regional Studies, MSc by Research (Social and Applied Sciences)	www.canterbury.ac.uk/pg/urban-studies		PGR
Youth Work and Community Learning and Development, MA / PgDip	www.canterbury.ac.uk/pg/tl-ywcd		PGT

KEY:

▲ Post Qualification

◆ Pre Qualification

PGT Postgraduate Taught

PGR Postgraduate Research



Canterbury
Christ Church
University

POSTGRADUATE
edge

Postgraduate Taught Degrees

Please email: pgenquiries@canterbury.ac.uk

Postgraduate Research Degrees

Please email: graduateschool@canterbury.ac.uk