



**Bournemouth  
University**

## **International Pathways Guide 2018–19**



**Follow your path to a UK degree**

**KAPLAN** INTERNATIONAL  
PATHWAYS



Bournemouth University is a hugely innovative UK institution in a beautiful seaside location. With Kaplan, you can gain entry to a degree at this leading university, and join an exciting learning community.



# Contents

<b>Bournemouth University</b>	
Why choose Bournemouth University? .....	04
Get to know the University .....	06
Campus experience .....	08
Bournemouth life .....	10
Student stories .....	12
Global success .....	14
 <b>How can I study at BU?</b>	
Your route to Bournemouth .....	18
Prepare for your degree .....	20
Teaching you can trust .....	22
Support at every step .....	24
Student accommodation .....	26
The Compass restaurant .....	28
 <b>Pathways to undergraduate degrees</b>	
Undergraduate pathways .....	30
<b>Foundation Certificate</b>	
Business, Law or Finance .....	32
Computing .....	34
Events, Tourism and Hospitality Management .....	36
Media and Communications .....	38
<b>International Year One</b>	
Business .....	40
Choose your undergraduate degree .....	42
 <b>Pathways to postgraduate degrees</b>	
Postgraduate pathways .....	44
<b>Pre-Master's</b>	
Business, Law or Finance .....	46
Events, Tourism and Hospitality Management .....	48
Media and Communications .....	50
Choose your postgraduate degree .....	52
 <b>Direct degree admission</b>	
Pre-Sessional English .....	54
 <b>Next steps</b>	
How to apply .....	57
Questions and answers .....	58
Contact us .....	59



# Why choose Bournemouth University?

Top 3 in the UK for  
number of students  
on work placements

Higher Education Statistics Agency 2017



**Top 5** in the UK for added  
value to expected  
graduate salaries

The Economist 2017

**92%**  
of graduates in  
work or further  
education after  
6 months

Higher Education Statistics Agency 2016–17



**96%**

of research is  
of international  
quality or better

Research Excellence Framework 2014



A global  
university with  
students from

**125**  
countries

**4<sup>th</sup>** in the UK for teaching effectiveness

Guardian University Guide 2018. See page 7 for more details.





# Get to know the University

Bournemouth University (BU) prides itself on preparing students for life after graduation. Its creative atmosphere will inspire you to succeed both during and after your degree.



## How can I study at Bournemouth University?

Find out more on page 18 or visit:  
[kaplanpathways.partners/bournemouth](https://kaplanpathways.partners/bournemouth)

### Fantastic facilities

At BU, you'll learn with the help of the University's superb facilities. By the end of 2018, BU will have invested £200 million in amenities such as new lecture theatres, seminar rooms, social spaces and the new £22 million Fusion Building. The University is also home to the famous National Centre for Computer Animation, and its Department of Tourism and Hospitality is recognised as a global leader by the UN World Tourism Organisation.

### Real experience

In today's job market, employers place high value on past work experience. Each year, more than 1,000 BU students take an important step towards their dream career, thanks to a flexible work placement that's part of their degree. By doing a placement, you will have the opportunity to gain valuable industry knowledge and in-depth experience, and build strong professional networks for your future career.

### Excellent teaching

At BU, you'll get a fantastic education. The University is in the UK's top 5 for the effectiveness of its teaching (Guardian University Guide 2018), and its academic staff focus on giving students useful and practical skills to help prepare you for the world of work. In 2017, BU received a Silver award in the Teaching Excellence Framework. This recognises the University's superb method of blending teaching, research and professional skills.

### Great location

BU also benefits from a great location on England's beautiful south coast. The town of Bournemouth is a popular destination for tourists, with its sunny weather and sandy beaches, and it's a great place for a student lifestyle. When you are not studying, you can enjoy Bournemouth's many parks, gardens and entertainment venues, and make the most of the town's lovely shops and boutiques.



"I'd like to offer a very warm welcome to any students thinking of studying here at BU. Academic excellence and a real care for our students are at the heart of what we do. We'll help you develop as an individual, and help you make the connections that will get you ahead in future life."

**Professor John Vinney**  
Vice-Chancellor of Bournemouth University

**7th**  
**in the UK**  
Sociology

Guardian University Guide 2018

**9th**  
**in the UK**  
Business and  
Management  
(research impact)

Times Higher Education interpretation of  
Research Excellence Framework 2014

**10th**  
**in the UK**  
Hospitality, Event  
Management and  
Tourism

Guardian University Guide 2018

**Top 20**  
**in the UK**  
Communication and  
Media Studies

Times Higher Education interpretation of  
Research Excellence Framework 2014

**Top 25**  
**in the UK**  
Journalism,  
Publishing and  
Public Relations

Guardian University Guide 2018



# Campus experience

At Bournemouth University, you'll love campus life. Its location in fun, sunny Bournemouth makes it a great place for you to live and study. You'll have everything you need to succeed during your degree.

"I love the cultural diversity here. You can meet people from all sorts of different countries and a variety of cultures. It's a really good way to make me speak more English."

**Necat from Turkey**  
MSc International Management

## Get involved

As a BU student, you'll have the chance to try lots of new activities. There are over 100 clubs and societies to choose from, plus a student-run radio station, magazine, and TV channel. You will also have the opportunity to volunteer with charities during your degree, and make use of all the resources of the University's excellent Students' Union.

## The best facilities

BU takes great pride in its exceptional facilities, and you can enjoy access to this wide range of amenities. These include sports facilities, computer suites, libraries, and study spaces. The University also boasts industry-standard recording studio, food management studios, as well as video game development labs with state-of-the-art industry tools.



## Lansdowne Campus

The Lansdowne Campus is close to Bournemouth town centre and the beach. Much of BU's student accommodation is located here, along with the Students' Union and a library. The campus is just a short walk from the railway station, and there are many shops and restaurants nearby.



## Talbot Campus

The Talbot Campus is just a short bus ride from Bournemouth town centre. It is BU's largest and liveliest campus, and is home to most of the University's faculties, sports facilities, services, cafés, social spaces and more.

## Bournemouth is your campus

This vibrant seaside destination is full of fun things to do. Take a look at the next page to learn more about life in Bournemouth.



# Bournemouth life

Bournemouth is a perfect destination for students. With its many attractions, beautiful surroundings, and excellent transport links, this cosmopolitan seaside town offers you all you need.



## Life by the sea

Bournemouth is famous in the UK for its great beaches and fun seaside attractions. There are 11km of sandy beaches to enjoy, making Bournemouth popular for both water sports lovers and sunbathers. You can take a walk along Bournemouth Pier that stretches out across the water, or experience the spectacular Bournemouth Air Festival.



## Superb shopping

Bournemouth is a fantastic place for shoppers. The town is full of big-name brands, boutique shops and independent vintage stores. It's home to Castlepoint, the largest shopping park in the UK, as well as many restaurants, bars and pubs. In nearby Boscombe, you can visit the impressive Open Air Market, while London, one of the world's top shopping hotspots, is less than 2 hours away by train.



## Art and creativity

In Bournemouth you'll enjoy a thriving cultural scene. You can visit the lovely Russell-Cotes Art Gallery and Museum, or see the world-class Bournemouth Symphony Orchestra. You can find lots of creative inspiration in the town too, from its lovely, relaxing tropical gardens, to its year-round programme of events. These include the Arts by the Sea festival and Candlelight Nights, when the town's many gardens are transformed with candles.



## Fantastic sports

Sports fans will find lots to love about Bournemouth. The town has its own Premier League football club, AFC Bournemouth, which frequently hosts matches against world-famous teams like Manchester United, Chelsea and Arsenal. The town's location means that you can try kayaking, waterskiing and surfing, and you can even watch the annual Bournemouth Marathon.



Discover more about life in Bournemouth  
[kaplanpathways.life/bournemouth](https://kaplanpathways.life/bournemouth)



# Student stories

Bournemouth is an exciting university town, so you can enjoy a fantastic student culture here. But don't take our word for it – find out what BU's students have to say.

See more online  
Search '@BUIntCollege'



#buproud



#bu #fun



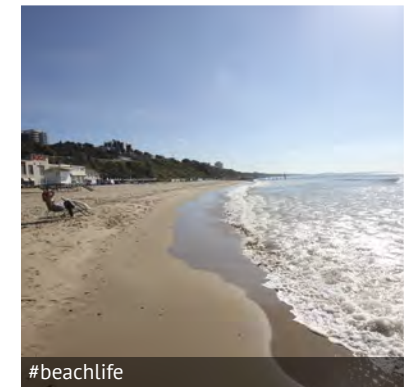
#fishandchips #foodie



#lovebournemouth

"When I considered studying at BU, I was very nervous. Would I be good enough? So when I got a place here, it really raised my confidence. The University has been very welcoming and now I'm ready to explore the world! I dream about using my own words to inspire others."

**Lieke from the Netherlands,  
MA Scriptwriting**



#beachlife

"Studying and working abroad has been a really positive experience for me, and has helped to boost my confidence. It has also helped me to better understand the English culture and integrate. Getting out of your comfort zone really helps you to grow as a person!"

**Diman from Bulgaria,  
BA (Hons) Tourism Management**



#bournemouth #adventures

"My favourite thing about Bournemouth is the beach. If you want to relax or think about something, you just need to go there. I love the UK lifestyle, and I've found that the people here are very kind. It's also really multicultural, so I've had the chance to meet people from all around the world. It was my dream to study in Bournemouth, and I'm so happy that I came here."

**Azgi from Kazakhstan,  
BA (Hons) Business Studies**



#funandgames #friends

"Some of my favourite times have been spent with friends in my flat, cooking dinners, or ordering takeaways and watching movies together. Studying does take up a lot of time, but finding time to get away from assignments for a while is always a fun and refreshing way to spend weekends in Bournemouth!"

**Alex from the USA,  
MA 3D Computer Animation**



#smile #bournemouth





# Global success

Students from around the world have studied at Bournemouth University, and many have gone on to be highly successful. With a BU degree, you could go on to great things too.



**Did you know?**

More than 100 BU Media graduates have celebrated success at the Oscars or BAFTAs! Successful films that BU alumni have worked on recently include *Star Wars: Rogue One*, *The Jungle Book*, *Dr Strange* and *Moana*, as well as past Oscar winners *Ex Machina*, *Interstellar* and *Inception*.

## BU success stories

Bournemouth University's graduates from abroad go on to leave their mark on the world in many ways. Here are just a few examples of BU's brilliant alumni.

1

**Brazil**  
**Daniel Coelho**  
Federal congressman

2

**China**  
**Peter Huang**  
Deputy Director of the EU-China  
Industrial Technology Transfer Centre

3

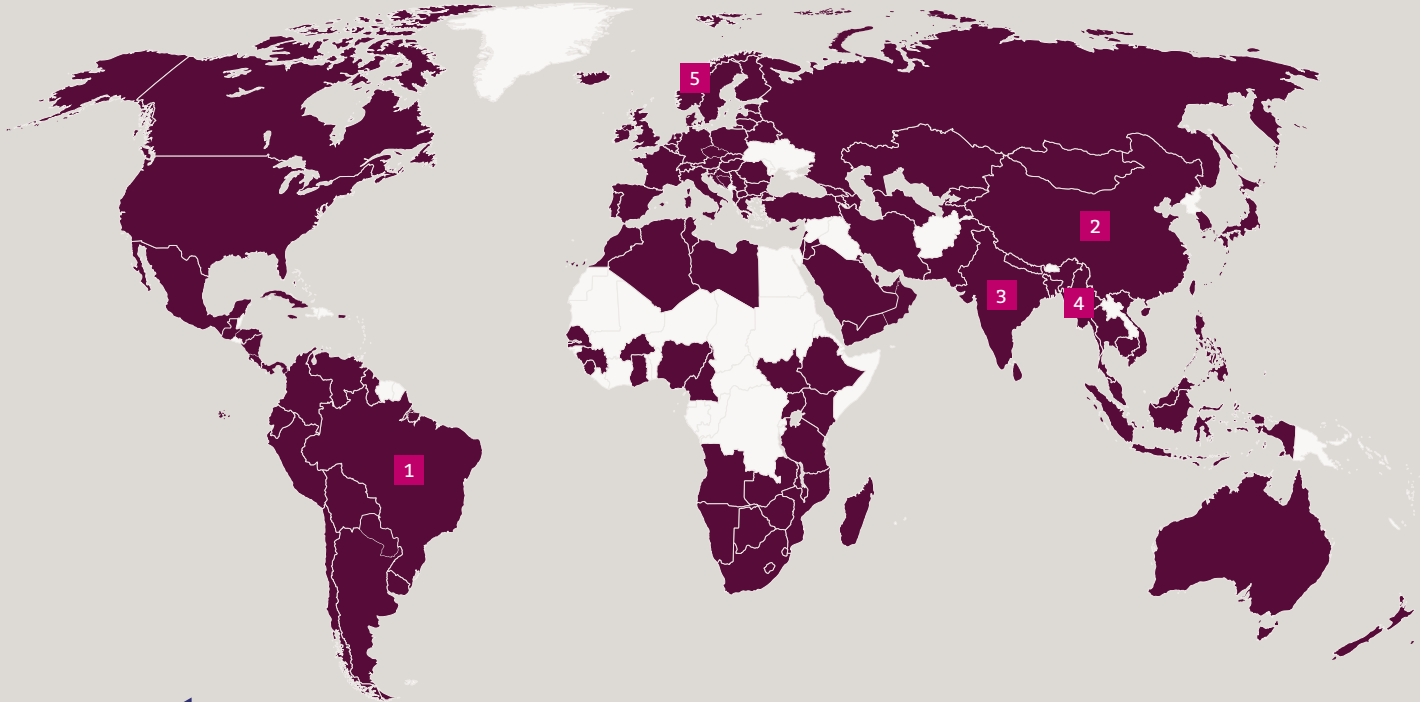
**India**  
**Naveen Goud Medaram**  
Visual effects artist,  
writer and director

4

**Myanmar**  
**Mya Harman**  
Marketing executive

5

**Norway**  
**Espen Berg**  
Musician and founder of the United  
Youth Development Organisation



**Get connected**

Studying at BU gives you an incredible chance to network and find job opportunities. The University has strong links with many companies, and offers valuable work placements you can do during your degree.

Past students have worked at:

- Adidas
  - Apple
  - BBC
  - BMW
  - Chelsea FC
- Disney
  - Hilton Hotels
  - Hong Kong Tourism Board
  - Intel
  - JP Morgan
- KPMG
  - Microsoft
  - Panasonic
  - Rolls-Royce
  - Universal Studios

Bournemouth University has students from

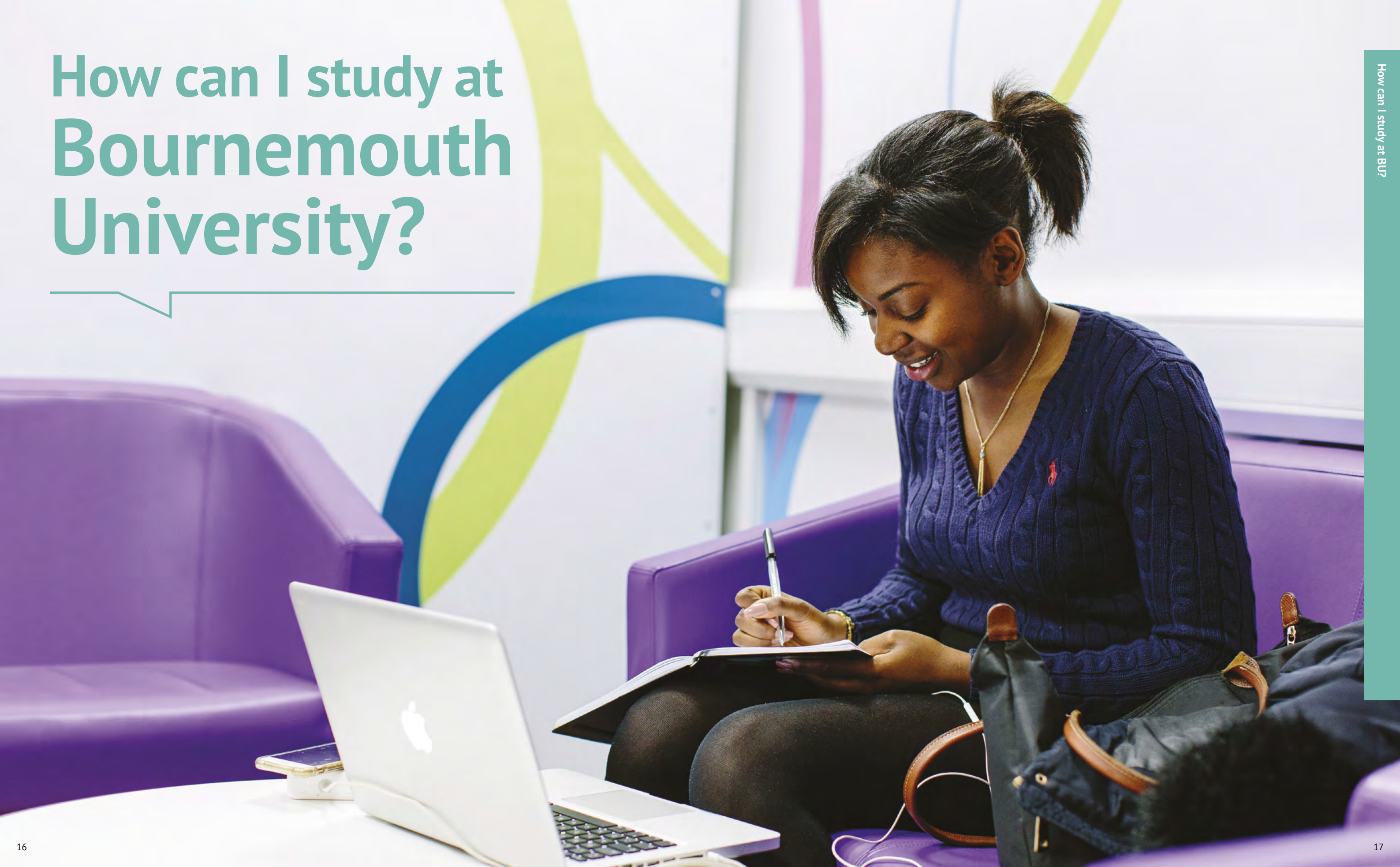
**125**

countries worldwide

(Marked in dark pink on the map)



# How can I study at Bournemouth University?





# Your route to Bournemouth

When you study with Kaplan, there are a number of ways you can progress to Bournemouth University (BU). A pathway course will give you the skills and confidence you need to succeed.

## What is a pathway course?

If you've completed high school or university, but don't qualify for entry to a degree, you can take a pathway course. You will improve your subject knowledge, academic and English language skills so that you are ready for your degree.

Your pathway course takes place at Bournemouth University International College on BU's Lansdowne Campus. You're guaranteed entry to a BU degree if you pass your pathway course at the required level with good attendance.

## On-campus pathway courses

### Foundation Certificate

To qualify for an undergraduate degree, you can take a Foundation Certificate. You will be fully prepared for BU and can progress to the 1st year of your undergraduate degree.

### International Year One (IYO)

If you've completed high school with good grades, you may be able to qualify for an IYO. This combines advanced university preparation with similar content to that of the 1st year of your undergraduate degree. You'll therefore be able to progress straight to 2nd year.

### Pre-Master's

If you have at least 3 years of higher education or equivalent, you can take a Pre-Master's, which can raise your skills to the required level for entry to a BU postgraduate degree.

### Pre-Sessional English

Pre-Sessional English is ideal if you qualify academically for entry to an undergraduate or postgraduate degree at BU, and just need to improve your English language level. This course can bring your IELTS score up to the level needed to start your degree.

### Foundation Certificate

English language entry requirement: minimum UKVI IELTS 4.0 in all skills

Tuition fees: from £12,230

Course length: 6 to 15 months

Subjects and more details: page 30

### International Year One (IYO)

English language entry requirement: minimum UKVI IELTS 4.0 in all skills

Tuition fees: from £12,350

Course length: 7 to 15 months

Subjects and more details: page 30

### Pre-Master's

English language entry requirement: minimum UKVI IELTS 4.5 with no less than 4.0 in any skill

Tuition fees: from £12,230

Course length: 6 to 15 months

Subjects and more details: page 44

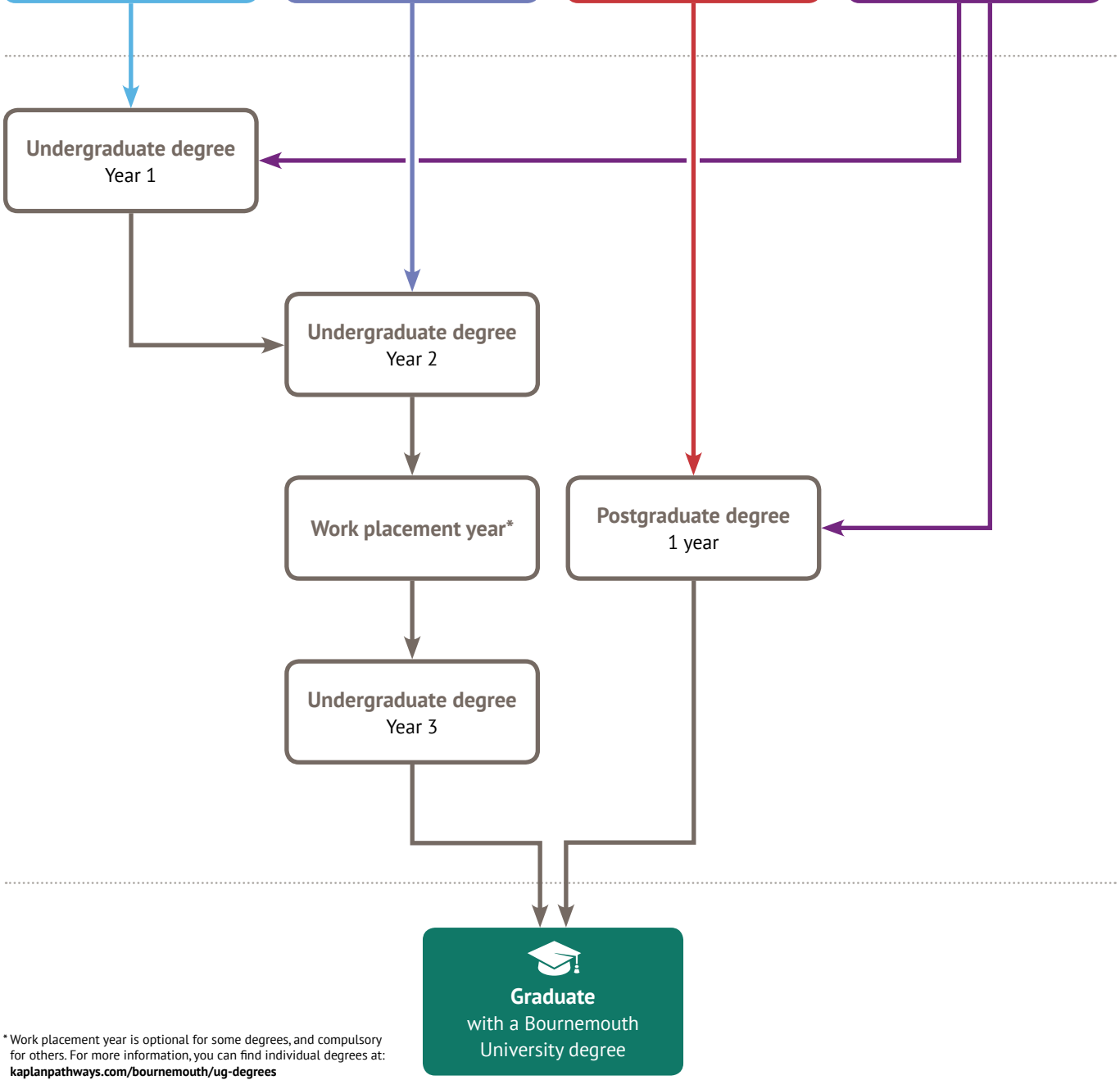
### Pre-Sessional English

English language entry requirement: minimum UKVI IELTS 4.0 in all skills

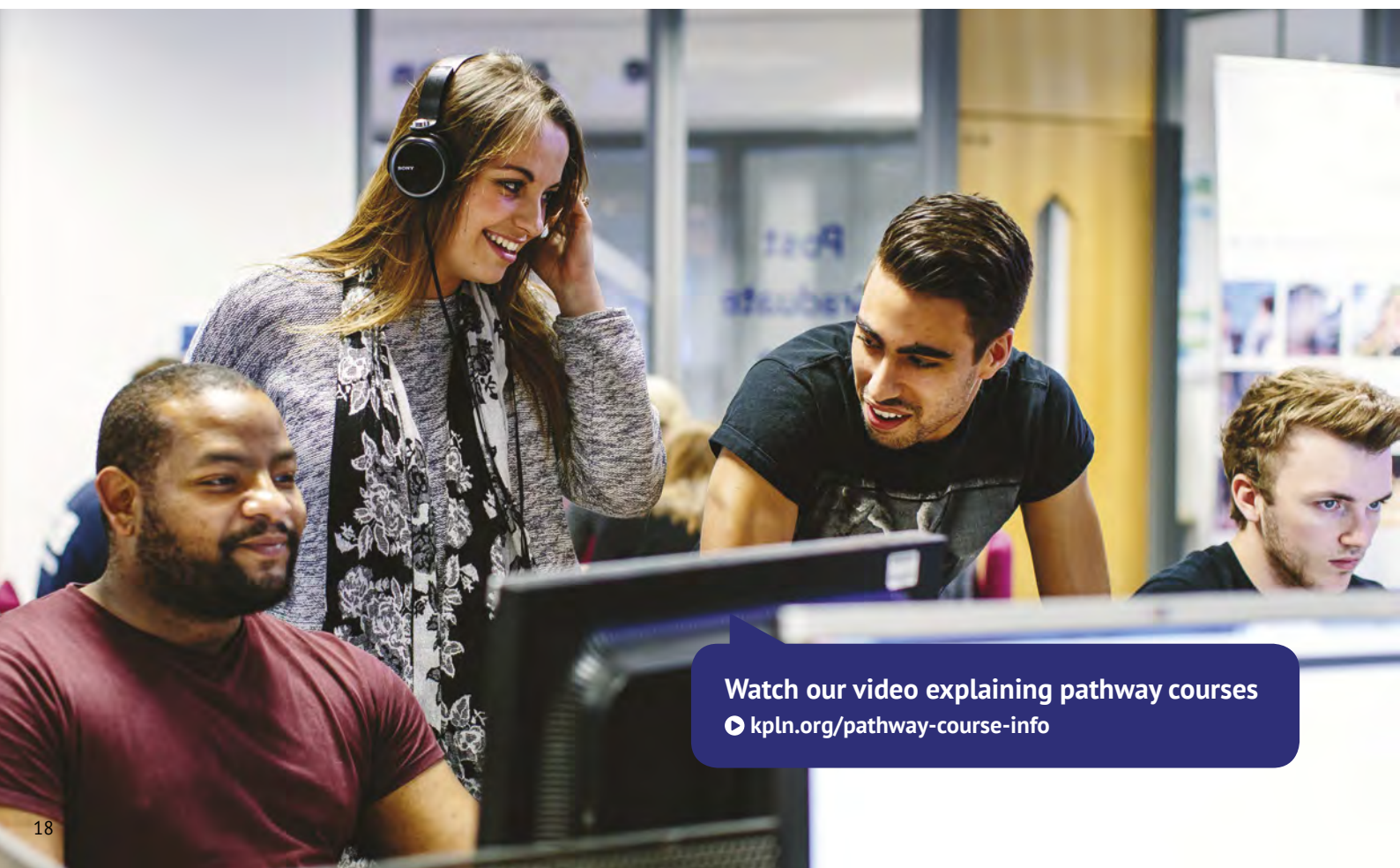
Tuition fees: from £1,600

Course length: 5 to 39 weeks

More details: page 54



\*Work placement year is optional for some degrees, and compulsory for others. For more information, you can find individual degrees at: [kaplanpathways.com/bournemouth/ug-degrees](https://kaplanpathways.com/bournemouth/ug-degrees)



Watch our video explaining pathway courses  
[kpln.org/pathway-course-info](https://kpln.org/pathway-course-info)



# Prepare for your degree

At Bournemouth University International College, you can take a pathway course to help you prepare for a Bournemouth University degree. With high-quality teaching and exceptional facilities, the College will make sure you're ready to succeed.

The College welcomed students of  
**41**  
nationalities  
in 2017

**Our guarantee**  
You're guaranteed entry to a degree at Bournemouth University if you pass your pathway course at the required level, with good attendance.

**See more of the College online**  
[kaplanpathways.com/bournemouth](http://kaplanpathways.com/bournemouth)



**Be prepared**  
At the International College, you'll be fully prepared for your degree. Our staff have years of experience, and the College offers a great learning environment for international students. You'll develop both your academic knowledge and your English language skills, so you can begin your university degree with confidence.



**Excellent facilities**  
Thanks to a fantastic redevelopment project in 2015, the International College offers high-tech facilities, including IT suites, WiFi access, and seminar and tutorial rooms. You can also enjoy the innovative Knowledge Hub, an informal area for learning activities, with study spaces and rooms for group work.



**University life**  
The International College is found on BU's Lansdowne Campus, so you will feel like a university student from day 1 of your pathway course. You'll also enjoy access to all of the University's resources and facilities throughout your time at the College, which means you'll know your way around before you start your degree.

**The Compass**  
In addition, the College is home to The Compass restaurant. This is an excellent eatery serving a wide variety of foods from around the world, and helping international students feel at home. You'll also have the option of a meal plan, meaning you don't have to worry about cooking during your stay! Find out more on page 28.



"We're delighted that you're thinking of studying at Bournemouth University International College. We support students from all around the world, and are so happy to see them succeed on their pathway courses with us, and achieve their goal of progressing to university. We look forward to welcoming you as you take your first step on this life-changing journey!"  
**Rachel Woodward Carrick**  
College Director



# Teaching you can trust

At Kaplan, we truly believe that the right teaching, and teachers, can transform your life. The staff at Bournemouth University International College are passionate about what they do, and committed to giving you the best possible education.

## Dedicated teaching

Teachers at the International College have many years of experience, and love what they do. They understand the challenges facing international students, and will work closely with you to prepare you for your degree. You'll meet with your tutor regularly, and you'll receive reports and assessments to help you stay on track.

## Everything you need

The International College boasts superb facilities to help teachers promote a great learning environment. From modern computer labs to high-quality classrooms, the College offers fantastic resources. These facilities will allow you to thrive as you study, and prepare you for university and your future career.

## Need additional help?

You'll receive one-to-one tutorials during your course, but you can always request more sessions if you feel you need them.

"Students know they can always come to me for advice or help, and we give them as much individual attention as we can. Because we are preparing students for university, our teachers excel in helping students to make that transition to a degree."

Personally, I love seeing the people I teach engaging with my subjects, and watching them become more confident as they learn!"

**Sabrah Wilson**  
Media and Language & Academic Skills Tutor

Watch a video with top tips from our teachers  
▶ [kpln.org/teachers-tips](https://kpln.org/teachers-tips)



# Support at every step

Studying abroad is a big step to take, but you'll receive our full support while at Bournemouth University International College.

Learn more and watch videos about our support services  
▶ [kaplanpathways.life/bournemouth-support](https://kaplanpathways.life/bournemouth-support)

## Before you arrive

Our support starts before you leave home. We will advise you on the visa process, and send you pre-arrival information pack with lots of helpful details about UK life. If you're under 18 years old, we can arrange a legal guardian during your studies for your well-being.

## Welcome activities

Before your classes start, we'll arrange fun welcome activities for you, so that you can get to know both the College staff and other students. We'll also help you with practical tasks, such as setting up a bank account and registering with a doctor, so that you're ready for student life.

## After you arrive

When you land in the UK, we can meet you at the airport and take you straight to your accommodation in Bournemouth. We want to be sure that you're happy and comfortable, and that you have the best possible start to your Bournemouth experience.

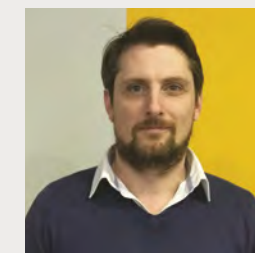
## On-going support

Your personal welfare is our top priority, and there is 24/7 security at our student accommodation to ensure your safety while you are studying here. We'll also organise trips, activities, and events throughout the year, so you're sure to have an amazing time in the UK!



## One World By The Sea

Each year, the International College participates in the One World By The Sea festival. This fantastic event celebrates international culture and its influence on local cinema, music, dance, food and education, and has lots of fun activities that you can try.



"We'll be here to help you through your educational path, right from the moment that you decide to study with us. We are proud to play a part in this important life stage, and will support you and your family however way we can. Even after you've finished your studies with us, we'll assist you as much as possible!"

**Andrew Hunt**  
Head of College Services at Bournemouth University International College



# Student accommodation

At Bournemouth University International College, you can stay in a secure, comfortable student residence. Our purpose-built accommodation is ideal for studying and enjoying life in the UK.



### Guaranteed accommodation

You're guaranteed accommodation while you're studying your pathway course at Bournemouth University International College.\*

\* On the condition that you pay your tuition deposit, accept your study offer and submit the accommodation booking form before the deadline for your intake.



Find out more about accommodation in Bournemouth  
[kaplanpathways.life/bournemouth-housing](https://kaplanpathways.life/bournemouth-housing)

### Lansdowne Point

During your International College pathway course, you can stay at our state-of-the-art student residence, Lansdowne Point. It's ideally located in the same building as the International College itself, and right in the heart of the town. With shops, restaurants and bars on your doorstep, you'll be able to make the most of student life.

### Accommodation availability

Please note that the exact accommodation available will depend on your course start date and length.

### Our student residence includes:

- private bedroom and bathroom
- dedicated booking and post-arrival support
- all bills, maintenance and WiFi
- shared kitchen facilities
- a variety of room preferences, including under-18 and single gender options
- access to common rooms or lounges
- access to in-house laundry facilities (usage charges apply)
- a free starter pack, including bedding and cooking equipment
- The Compass, our on-site restaurant with optional meal plans available (details on page 28)

### How to book

You can apply for accommodation at the same time that you apply for your course.

- 1) Indicate on the International College application form that you require accommodation.
- 2) After receiving your study offer, book your accommodation and optional meal plan by completing the online accommodation form and paying the holding fee (typically £1,000) when you accept your offer.
- 3) You'll then receive your accommodation agreement. Read, sign and return this to reserve your room.

### Example accommodation prices

Intake	Course/contract length	Guide prices (with meal plan)	Guide prices (without meal plan)
Autumn 2018	2 terms (38 weeks)	£8,643–£8,871	£6,102–£6,330
	3 terms (49–50 weeks)	£11,316–£13,287	£7,796–£9,600
Spring 2019	2 terms (28–33 weeks)	£6,604–£8,797	£4,562–£6,421
	3 terms (35 weeks)	£8,177–£8,384	£5,574–£5,781

Pricing and contract length examples are an illustration. Confirmed pricing for each intake will be available on our website once the relevant booking period opens.



# The Compass restaurant

You can't study on an empty stomach; the International College has its own place to eat, The Compass restaurant, serving fresh food every day.



### A taste of culture

Eating at The Compass is a great way to experience different culinary cultures. You'll find food from around the world here, so you're likely to find dishes that are familiar to you, or that even come from your home country. At the same time, you can try something new, and you might discover a new favourite!

### High-quality food

The Compass makes meals on site daily with fresh ingredients, and the food is healthy, balanced and, most importantly, delicious! The restaurant also caters for a range of dietary requirements, including vegetarian and halal, so you can be confident that your needs are cared for, making your time at the College easier.



### Meal plans

Some Lansdowne Point accommodation options also include a meal plan, with delicious, healthy food from The Compass. Each day, you'll receive credit to spend on the food you want; enough for breakfast, lunch and dinner! If you're on a meal plan, you'll also benefit from a 10% discount on everything bought at the restaurant, so your money will go further.

### How does the meal plan work?

Each day from Monday to Friday, you'll receive £14.40 of credit on your residence key card, to spend on the food that you want. This gives you flexibility over what to eat, and should be enough for breakfast, lunch and dinner. Your credit renews each evening, so you don't need to worry about budgeting for meals.

### Example menu

A sample menu for a single day might include:

Breakfast	Lunch	Dinner
<ul style="list-style-type: none"><li>• Cereals, tea, coffee and juices</li><li>• Pastries</li><li>• Traditional English breakfast items such as sausages, bacon, eggs, baked beans, toast, tomatoes and mushrooms</li><li>• Kedgeree/Omelettes</li></ul>	<ul style="list-style-type: none"><li>• Vietnamese noodle soup</li><li>• Falafel and hummus with griddled pitta bread and Greek feta salad</li><li>• Oven-braised Catalan fish stew with fennel and saffron aioli</li><li>• Lasagne al forno with salad</li></ul>	<ul style="list-style-type: none"><li>• Cantonese stir-fried vegetables with caraway seed bread</li><li>• Hot piri piri roast chicken with red pepper and mustard slaw</li><li>• Egyptian lamb with egg plant, served on al dente pasta ribbons</li><li>• Chocolate mousse pot</li></ul>





# Undergraduate pathways

You have several pathway options leading to an undergraduate degree at Bournemouth University. The one that's right for you will depend on your academic qualifications, English language level and subject preference.

## Foundation Certificate

To gain entry to the 1st year of an undergraduate degree. Offered in the following subject areas:

Business, Law or Finance	page 32
Computing	page 34
Events, Tourism and Hospitality Management	page 36
Media and Communications	page 38

## International Year One

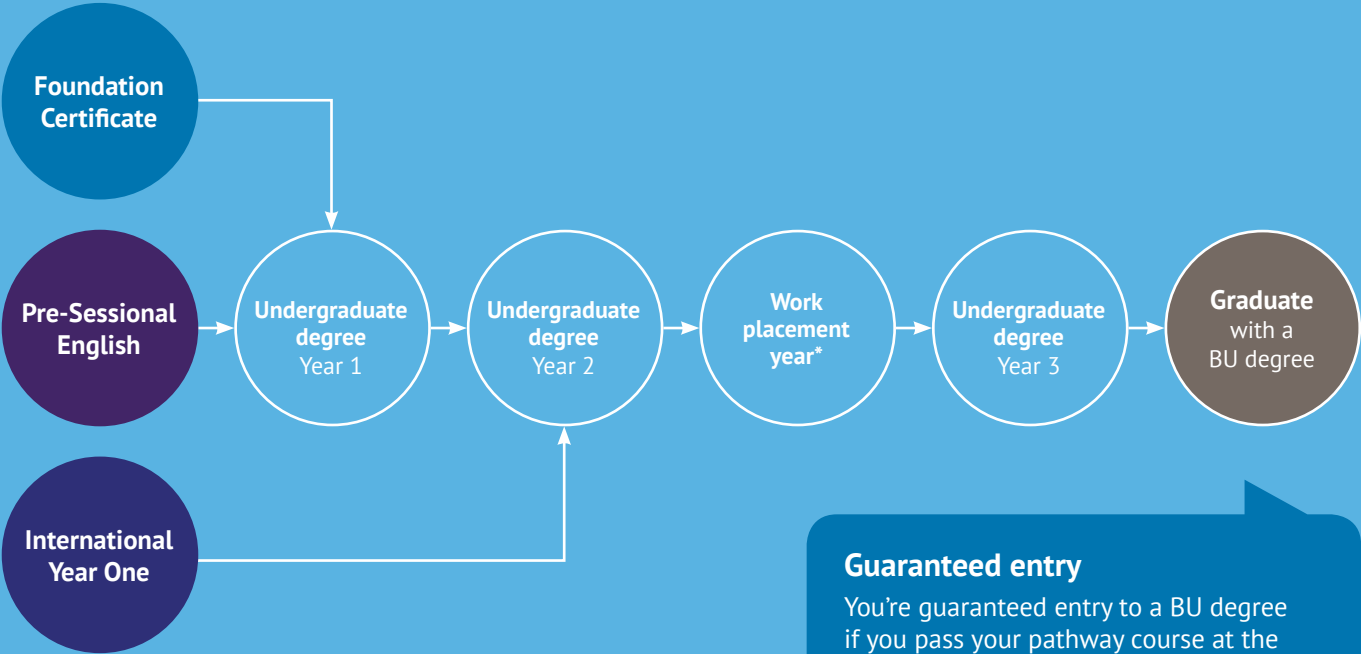
For entry to the 2nd year of an undergraduate degree. Offered in the following subject area:

Business	page 40
----------	---------

## Pre-Sessional English

For progression to the 1st year of an undergraduate degree, where you need to improve just your English language level.

See page 54 for more information.



\* Work placement year is optional for some degrees, and compulsory for others. For more details, you can find individual degrees at: [kaplanpathways.com/bournemouth/ug-degrees](https://kaplanpathways.com/bournemouth/ug-degrees)

### Guaranteed entry

You're guaranteed entry to a BU degree if you pass your pathway course at the required level, with good attendance.

"The course at Kaplan really prepared me for university. The education system in the UK is so different compared to Indonesia, and studying with Kaplan seemed like an introduction to university. It helped helping me with things like referencing and other academic skills."

**Alifia from Indonesia**  
BA (Hons) Communication and Media



# Foundation Certificate for Business, Law or Finance

## Course options

### 2 terms

**Entry requirements:** completion of high school, and at least UKVI IELTS 5.5 (minimum 4.5 in all skills)

**Course start:** September 2018, January 2019, February 2019, May 2019

**Course length:** 6 to 9 months

**Degree entry:** September 2019†

**Tuition fees:** £12,230

### 3 terms: Enhancement

**Entry requirements:** completion of high school, and at least UKVI IELTS 5.5 (minimum 4.5 in all skills)

**Course start:** September 2018, October 2018\*

**Course length:** 10 to 11 months

**Degree entry:** September 2019

**Tuition fees:** £13,230

† May 2019 Foundation Certificate leads to International Year One (IYO) in January 2020, then to degree year 2 in September 2020. You will need to choose an IYO progression degree in order to take this option.

\* 2.5-term course – students join the 3-term Foundation, but begin half a term later.

### Lower IELTS score?

If your English language level is lower than that listed above, but you have at least UKVI IELTS 4.0 in all skills, you can take a course that includes Extended English and Skills. Contact us for more details.

## Core modules

All students on this Foundation Certificate will take:

### Economics in an International Context

- Theory and practice of how markets work
- Factors influencing international trade

### Language for Study 3

- Complex arguments in English
- Awareness of language conventions

### Skills for Study 2

- Analytical skills in written and spoken information

### Skills for Study 3

- Researching and analysing information to a high standard
- Structuring written and oral arguments

### Statistics

- Analysing and interpreting data

## Pathway modules

You'll also study modules in one of the following pathways. Your pathway is determined by your degree subject at Bournemouth University.

### Business pathway

#### Business and the Business Environment

- External influences on business
- Effects of globalisation

#### Business Enterprise

- Internal workings of a business
- Analysing business performance

— OR —

### Finance pathway

#### Accountancy

- Essential accounting principles
- Constructing accounts for business
- Interpreting financial accounts

#### Business and the Business Environment

- External influences on business
- Effects of globalisation

— OR —

### Law pathway

#### Law

- Legal world of modern Britain
- British legal system

#### Social Science

- Socio-political environment of modern Britain

## 3-term Enhancement modules

If you're studying the 3-term Enhancement Foundation Certificate, you'll also take:

### Computing Skills for Foundation Certificate

- Essential IT skills including Microsoft Office
- Modern computing topics
- Technology in industry and society

### Personal Development and Pre-Study Skills

- Advanced skills related to your course
- Personal development skills

Plus one of the following modules, as decided by the College:

### Introduction to British Society and Culture

- UK life and culture
- British society and history

— OR —

### Preparatory Mathematics

- Algebra, geometry, trigonometry, graphs and transformations
- Applications of these topics

## Degree possibilities

This Foundation Certificate can lead to a range of degree subjects at BU. For example, you could progress to:

- Accounting
- Advertising
- Business
- Economics
- Finance
- Law
- Management
- Marketing
- Social Work
- Sociology

For a full list of degree options, see page 42.

## Career possibilities

This educational route can open up many career options for you.

You could become a:

- Accountant
- Business Manager
- Economist
- Events Manager
- Financial Analyst
- Financial Trader
- Lawyer
- Management Consultant
- Marketing Executive
- Recruitment Consultant
- Social Researcher

### Have any questions?

Contact our team for help:  
[kaplanpathways.study/contact-bournemouth](https://kaplanpathways.study/contact-bournemouth)



# Foundation Certificate for Computing

## Course options

### 2 terms

**Entry requirements:** completion of high school, and at least UKVI IELTS 5.5 (minimum 4.5 in all skills)

**Course start:** September 2018, January 2019

**Course length:** 7 to 9 months

**Degree entry:** September 2019

**Tuition fees:** £12,230

### 3 terms: Enhancement

Study extra modules to further enhance your academic skills

**Entry requirements:** completion of high school, and at least UKVI IELTS 5.5 (minimum 4.5 in all skills)

**Course start:** September 2018, October 2018\*

**Course length:** 10 to 11 months

**Degree entry:** September 2019

**Tuition fees:** £13,230

\* 2.5-term course – students join the 3-term Foundation, but begin half a term later.

## Core modules

All students on this Foundation Certificate will take:

### Business Information Systems

- Basic IT design concepts, tools and techniques
- Role of data, information and knowledge in business operation and management

### Introduction to Audio-Visual Media and Technology

- The internet and digital culture
- Web interactivity and effective design
- Media technology applications

### Introduction to Programming

- Basic programming structures and rules
- Using code with variables and parameters
- SQL, HTML, Java and JavaScript

### Language for Study 3

- Complex arguments in English
- Awareness of language conventions

### Mathematics for Computing

- Basic Mathematical knowledge and skills for computing students
- Application of mathematical techniques in pure and applied areas

### Skills for Study 2

- Analytical skills in written and spoken information

### Skills for Study 3

- Researching and analysing information to a high standard
- Structuring written and oral arguments

## 3-term Enhancement modules

If you're studying the 3-term Enhancement Foundation Certificate, you'll also take:

### Computing Skills for Foundation Certificate

- Essential IT skills including Microsoft Office
- Modern computing topics
- Technology in industry and society

### Personal Development and Pre-Study Skills

- Advanced skills related to your course
- Personal development skills

Plus one of the following modules, as decided by the College:

### Introduction to British Society and Culture

- UK life and culture
- British society and history

— OR —

### Preparatory Mathematics

- Algebra, geometry, trigonometry, graphs and transformations
- Applications of these topics

### Lower IELTS score?

If your English language level is lower than that listed above, but you have at least UKVI IELTS 4.0 in all skills, you can take a course that includes Extended English and Skills. Contact us for more details.

## Degree possibilities

This Foundation Certificate can lead to a range of degree subjects at BU. For example, you could progress to:

- Business Information Technology
- Computing
- Cyber Security Management
- Forensic Computing and Security
- Game Design
- Music and Audio Technology
- Social Work
- Software Engineering

For a full list of degree options, see page 42.

## Career possibilities

This educational route can open up many career options for you. You could become a:

- Applications Developer
- Games Developer
- Information Systems Manager
- IT Consultant
- Software Engineer
- Systems Analyst
- Web Developer

### Have any questions?

Contact our team for help:  
[kaplanpathways.study/contact-bournemouth](https://kaplanpathways.study/contact-bournemouth)



# Foundation Certificate for Events, Tourism and Hospitality Management

## Course options

### 2 terms

**Entry requirements:** completion of high school, and at least UKVI IELTS 5.5 (minimum 4.5 in all skills)  
**Course start:** September 2018, January 2019  
**Course length:** 7 to 9 months  
**Degree entry:** September 2019  
**Tuition fees:** £12,230

### 3 terms: Enhancement

**Entry requirements:** completion of high school, and at least UKVI IELTS 5.5 (minimum 4.5 in all skills)  
**Course start:** September 2018, October 2018\*  
**Course length:** 10 to 11 months  
**Degree entry:** September 2019  
**Tuition fees:** £13,230

\* 2.5-term course – students join the 3-term Foundation, but begin half a term later.

## Core modules

All students on this Foundation Certificate will take:

### Business and the Business Environment

- External influences on business
- Effects of globalisation

### Business Enterprise

- Internal workings of a business
- Analysing business performance

### Economics in an International Context

- Theory and practice of how markets work
- Factors influencing international trade

### Language for Study 3

- Complex arguments in English
- Awareness of language conventions

### Skills for Study 2

- Analytical skills in written and spoken information

### Skills for Study 3

- Researching and analysing information to a high standard
- Structuring written and oral arguments

### Tourism and Hospitality Management

- History and growth of tourism
- Demand for tourist travel
- Economic, cultural and environmental impacts of tourism

## 3-term Enhancement modules

If you're studying the 3-term Enhancement Foundation Certificate, you'll also take:

### Computing Skills for Foundation Certificate

- Essential IT skills including Microsoft Office
- Modern computing topics
- Technology in industry and society

### Personal Development and Pre-Study Skills

- Advanced skills related to your course
- Personal development skills

Plus one of the following modules, as decided by the College:

### Introduction to British Society and Culture

- UK life and culture
- British society and history

— OR —

### Preparatory Mathematics

- Algebra, geometry, trigonometry, graphs and transformations
- Applications of these topics

### Lower IELTS score?

If your English language level is lower than that listed above, but you have at least UKVI IELTS 4.0 in all skills, you can take a course that includes Extended English and Skills. Contact us for more details.

## Degree possibilities

This Foundation Certificate can lead to a range of degree subjects at BU. For example, you could progress to:

- Advertising
- Events Management
- Hospitality Management
- Marketing
- Public Relations
- Social Work
- Sports Management
- Tourism Management

For a full list of degree options, see page 42.

## Career possibilities

This educational route can open up many career options for you. You could become a:

- Accommodation Manager
- Advertising Executive
- Catering Manager
- Events Planner
- Hotel Manager
- Public Relations Officer
- Restaurant Manager
- Travel Agency Manager

### Have any questions?

Contact our team for help:  
[kaplanpathways.study/contact-bournemouth](https://www.kaplanpathways.study/contact-bournemouth)



# Foundation Certificate for Media and Communications

## Course options

### 2 terms

**Entry requirements:** completion of high school, and at least UKVI IELTS 5.5 (minimum 4.5 in all skills)

**Course start:** September 2018, January 2019

**Course length:** 7 to 9 months

**Degree entry:** September 2019

**Tuition fees:** £12,230

### 3 terms: Enhancement

**Entry requirements:** completion of high school, and at least UKVI IELTS 5.5 (minimum 4.5 in all skills)

**Course start:** September 2018, October 2018\*

**Course length:** 10 to 11 months

**Degree entry:** September 2019

**Tuition fees:** £13,230

\* 2.5-term course – students join the 3-term Foundation, but begin half a term later.

## Core modules

All students on this Foundation Certificate will take:

### Interpreting Visual Culture

- How visuals and language affect the interpretation of a message
- Influence of context on how media is understood

### Introduction to Audio-Visual Media and Technology

- The internet and digital culture
- Web interactivity and effective design

### Introduction to Media and Communication Studies

- Media theories, audiences and broadcasting
- Global role of media

### Introduction to Multimedia and Communication

- The role and impact of the media in everyday life
- Developing a critical approach to modern media

### Language for Study 3

- Complex arguments in English
- Awareness of language conventions

### Skills for Study 2

- Analytical skills in written and spoken information

### Skills for Study 3

- Researching and analysing information to a high standard
- Structuring written and oral arguments

## 3-term Enhancement modules

If you're studying the 3-term Enhancement Foundation Certificate, you'll also take:

### Computing Skills for Foundation Certificate

- Essential IT skills including Microsoft Office
- Modern computing topics
- Technology in industry and society

### Personal Development and Pre-Study Skills

- Advanced skills related to your course
- Personal development skills

Plus one of the following modules, as decided by the College:

### Introduction to British Society and Culture

- UK life and culture
- British society and history

— OR —

### Preparatory Mathematics

- Algebra, geometry, trigonometry, graphs and transformations
- Applications of these topics



## Degree possibilities

This Foundation Certificate can lead to a range of degree subjects at BU. For example, you could progress to:

- Advertising
- Communication and Media
- English
- Film
- Marketing
- Journalism
- Politics
- Public Relations
- Social Work
- Television Production

For a full list of degree options, see page 42.

## Career possibilities

This educational route can open up many career options for you.

You could become a:

- Advertising Executive
- Cinematographer
- Copywriter
- Journalist
- Politician
- Public Relations Officer
- Screenwriter
- Social Researcher
- Television Producer

### Lower IELTS score?

If your English language level is lower than that listed above, but you have at least UKVI IELTS 4.0 in all skills, you can take a course that includes Extended English and Skills. Contact us for more details.

### Have any questions?

Contact our team for help:  
[kaplanpathways.study/contact-bournemouth](https://kaplanpathways.study/contact-bournemouth)



# International Year One in Business

## Course options

**2 terms**  
**Entry requirements:** completion of high school with good grades, and at least UKVI IELTS 5.5 (minimum 5.0 in all skills)  
**Course start:** September 2018, January 2019  
**Course length:** 7 to 9 months  
**Degree entry:** September 2019  
**Tuition fees:** £12,350

**3 terms: Enhancement**  
**Entry requirements:** successful completion of high school, and UKVI IELTS 5.5 (minimum 5.0 in all skills)  
**Course start:** September 2018, October 2018\*  
**Course length:** 10 to 11 months  
**Degree entry:** September 2019  
**Tuition fees:** £13,560

\* 2.5-term course – students join the 3-term International Year One, but begin half a term later.

## Core modules

**All students on this International Year One will take:**

<b>Business Development and Entrepreneurship</b> <ul style="list-style-type: none"><li>Starting and developing a business</li><li>Presenting a business plan</li></ul>	<b>Introduction to Marketing Principles</b> <ul style="list-style-type: none"><li>Basic theories and ideas of marketing</li><li>Real-world examples and individual consumer experiences</li></ul>
<b>Economics</b> <ul style="list-style-type: none"><li>Microeconomics: company and consumer behaviour</li><li>Macroeconomics: unemployment, trade and national income</li></ul>	<b>Language for Study 3</b> <ul style="list-style-type: none"><li>Complex arguments in English</li><li>Awareness of language conventions</li></ul>
<b>Financial Accounting</b> <ul style="list-style-type: none"><li>Preparing financial statements</li><li>Analysing financial reports</li></ul>	<b>Quantitative Methods for Business</b> <ul style="list-style-type: none"><li>Quantitative techniques in industry</li><li>Analysing and interpreting data in a business context</li></ul>
	<b>Skills for Study 3</b> <ul style="list-style-type: none"><li>Analytical skills in written and spoken information</li></ul>

## Pathway modules

**You'll also study one module in one of the following pathways. Your pathway is determined by your degree subject at Bournemouth University.**

### Business pathway

**Business Law**

- Legal principles affecting modern business activities
- Contract law and company law

— OR —

### Finance pathway

**Management Accounting and Financial Management**

- Key issues in management accounting
- Process costing and pricing
- Profitability analysis

## 3-term Enhancement modules

**If you're studying the 3-term Enhancement International Year One, you'll also take:**

**Computing Skills for International Year One**

- Comprehend computing terminology in English
- Learn to perform advanced computer functions
- Use of basic computer-based applications

**Personal Development and Study Skills**

- Academic and personal development skills

**Plus one of the following modules, as decided by the College:**

**Introduction to Business**

- Key issues in business, economics and accounting

— OR —

**Modern British Society and Culture**

- UK life and culture
- British society and history

## Degree possibilities

This International Year One can lead to a range of degree subjects at BU. For example, you could progress to:

- Accounting and Finance
- Accounting and Taxation
- Business Studies
- Business Studies with Marketing
- Economics
- Finance and Economics
- International Business Studies

For a full list of degree options, see page 42.

## Career possibilities

This educational route can open up many career options for you. You could become a:

- Accountant
- Actuary
- Business Manager
- Corporate Investment Banker
- Economist
- Financial Analyst
- Financial Trader
- Marketing Executive



### Lower IELTS score?

If your English language level is lower than that listed above, but you have at least UKVI IELTS 4.0 in all skills, you can take a course that includes Extended English and Skills. Contact us for more details.

### Have any questions?

Contact our team for help:  
[kaplanpathways.study/contact-bournemouth](https://kaplanpathways.study/contact-bournemouth)



# Choose your undergraduate degree

Find your preferred Bournemouth University undergraduate degree in the tables below, and use the key to discover which International College pathway course is right for you.

## Key to pathway courses

Foundation Certificate for Business, Law or Finance ..... page 32

- B Business pathway
- F Finance pathway
- L Law pathway

C Foundation Certificate for Computing ..... page 34

E Foundation Certificate for Events, Tourism and Hospitality Management ... page 36

M Foundation Certificate for Media and Communications ..... page 38

International Year One in Business ..... page 40

- B Business pathway
- F Finance pathway

## Arts and Humanities

English BA (Hons) M

## Business

Accounting and Business BA (Hons)	B F L F
Accounting and Finance BA (Hons)	B F L F
Accounting and Law BA (Hons)	B F L F
Accounting and Taxation BA (Hons)	B F L F
Business Information Technology BSc (Hons)	C
Business Studies BA (Hons)	B F L B
Business Studies with Economics BA (Hons)	B F L B F
Business Studies with Enterprise BA (Hons)	B F L B
Business Studies with Finance BA (Hons)	B F L F
Business Studies with Human Resource Management BA (Hons)	B F L
Business Studies with Marketing BA (Hons)	B F L B
Business Studies with Operations and Project Management BA (Hons)	B F L B
Economics BA (Hons)	B F L F
Finance and Business BA (Hons)	B F L F
Finance and Economics BA (Hons)	B F L F
International Business Studies BA (Hons)	B F L B
Marketing BSc (Hons)	B F L E M
Marketing Communications BA (Hons)	B E M
Retail Management BA (Hons)	B E
Sports Management BSc (Hons)	E

## Computing

Computer Networks BSc (Hons)	C
Computing BSc (Hons)	C
Cyber Security Management BSc (Hons)	C
Forensic Computing and Security BSc (Hons)	C
Games Design BSc (Hons)	C
Games Software Engineering BSc (Hons)	C
Information Technology Management BSc (Hons)	C
Music and Sound Production Technology BSc (Hons)	C
Software Engineering BSc (Hons)	C

## Hospitality and Tourism

Events Management BA (Hons)	B E
International Hospitality Management BA (Hons)	B E
Tourism Management BA (Hons)	B E

## Law

Business Law LLB (Hons)	B F L
Entertainment Law LLB (Hons)	B F L
Law LLB (Hons)	B F L
Law and Taxation LLB (Hons)	B F L
Law with Economics LLB (Hons)	B F L

## Media

Advertising BA (Hons)	B E M
Communication and Media BA (Hons)	M
Film BA (Hons)	M
Media Production BA (Hons)	M
Multimedia Journalism BA (Hons)	M
Politics BA (Hons)	M
Public Relations BA (Hons)	E M
Scriptwriting for Film and Television BA (Hons)	M
Television Production BA (Hons)	M

## Social Science

Social Work BA (Hons)	B F L C E M
Sociology BA (Hons)	L
Sociology and Anthropology BA (Hons)	L
Sociology and Criminology BA (Hons)	L

## Find your degree online

Available degree options may change over time, so visit our online degree finder for the most up-to-date list: [kaplanpathways.com/bournemouth/ug-degrees](https://kaplanpathways.com/bournemouth/ug-degrees)



# Postgraduate pathways

If you want to gain entry to a Bournemouth University postgraduate degree, a Pre-Master's is your best option. The one that's right for you will depend on your academic qualifications, English language level and subject preference.

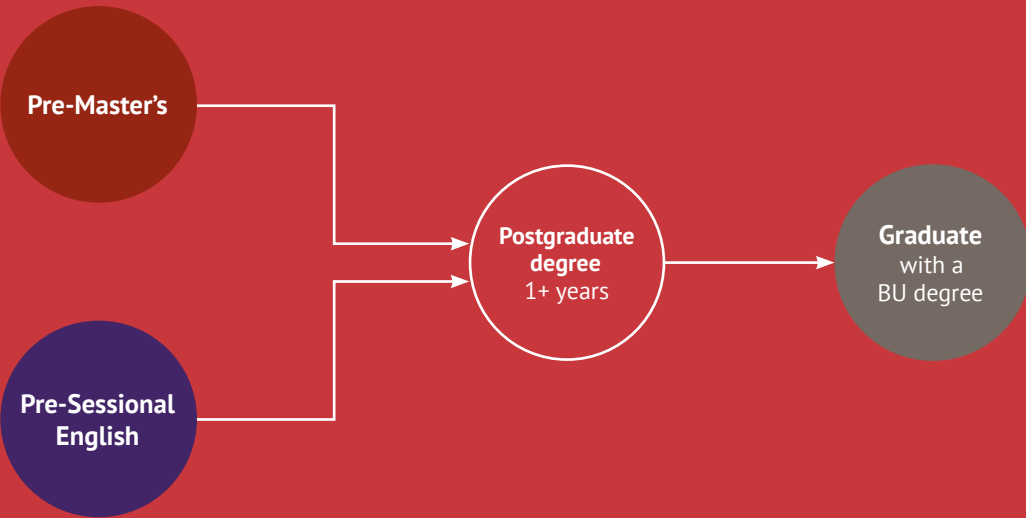
## Pre-Master's

For entry to a postgraduate degree. Offered in the following subject areas:

Business, Law or Finance	page 46
Events, Tourism and Hospitality Management	page 48
Media and Communications	page 50

## Pre-Sessional English

For conditional and unconditional offer holders to enter a postgraduate degree at BU. Pre-Sessional English will help you improve your English language level before your degree. See page 54 for more information.



## Guaranteed entry

You are guaranteed entry to a BU postgraduate degree, if you pass your Pre-Master's or Pre-Sessional English course at the required level, with good attendance.

"I heard that coming through Kaplan was the best way of ensuring I gained entry to BU. The staff at Kaplan are really good and very professional. There are many teachers doing more than expected, so I am very satisfied because any time I need help, I can get it."

**Anelia from Kazakhstan**  
MSc International Hospitality and Tourism Management



# Pre-Master's for Business, Law or Finance

## Course options

**Academic entry level:** these options require minimum 3 years of higher education in a suitable subject.

### 2 terms

**English entry level:** minimum UKVI IELTS 5.5 (no less than 5.0 in any skill)  
**Course start:** September 2018, January 2019, February 2019  
**Course length:** 6 to 9 months  
**Degree entry:** September 2019  
**Tuition fees:** £12,230

### 2.5 terms (with EES)

**English entry level:** minimum UKVI IELTS 5.0 in all skills  
**Course start:** October 2018, July 2019  
**Course length:** 10 to 11 months  
**Degree entry:** September 2019, September 2020  
**Tuition fees:** £14,355

### 3 terms (with EES)

**English entry level:** minimum UKVI IELTS 5.0 (no less than 4.5 in any skill)  
**Course start:** September 2018, June 2019  
**Course length:** 11 to 12 months  
**Degree entry:** September 2019, September 2020  
**Tuition fees:** £14,355

### Extended English and Skills

If you don't qualify for a 2-term Pre-Master's, you can take a course of up to 4 terms with Extended English and Skills (EES), including the 2.5 and 3-term options above. You can still qualify for EES if you have at least UKVI IELTS 4.5 (with no less than 4.0 in any skill).

## Core modules

All students on this Pre-Master's will take:

### Language for Study 3

- Complex arguments in English
- Awareness of language conventions

### Research Design and Critique

- Defining research problems
- Designing projects to find solutions to those problems

### Research Project

- Organisational and planning skills
- Supporting arguments with evidence and text references

### Skills for Study 2

- Analytical skills in written and spoken information

### Skills for Study 3

- Researching and analysing information to a high standard
- Structuring written and oral arguments

## Pathway modules

You'll also study modules in one of the following pathways. Your pathway is determined by your degree subject at Bournemouth University.

### Business pathway

#### Global Corporate Marketing Strategies

- Strategies in developing and distributing products worldwide
- Issues affecting marketing strategies

#### Theory and Practice of Strategic Management

- Strategic leadership
- Logical approaches to business issues

— OR —

### Finance pathway

#### Economics and Finance

- Economic theories and models
- Implications for a firm's strategic direction

#### Theory and Practice of Strategic Management

- Strategic leadership
- Logical approaches to business issues

— OR —

### Law pathway

#### Introduction to English, European and International Law

- Key areas of English, European and international law
- Legal principles and research techniques

#### Social Science Principles

- Natural and social phenomena
- Social science theories

## Degree possibilities

This Pre-Master's course can lead to a range of degree subjects at BU. For example, you could progress to:

- Commercial Law
- Events Marketing
- Finance
- Intellectual Property
- International Accounting
- Management
- Marketing Management
- Nutrition and Behaviour
- Public International Law
- Retail Management and Marketing
- Social Care
- Tax Law

For a full list of degree options, see page 52.

## Career possibilities

This educational route can open up many career options for you. You could become a:

- Accountant
- Actuary
- Business Manager
- Commercial Lawyer
- Events Manager
- Financial Analyst
- Intellectual Property Lawyer
- Investment Banker
- Marketing Executive
- Project Manager
- Retail Manager
- Tax Lawyer

## Have any questions?

Contact our team for help:  
[kaplanpathways.study/contact-bournemouth](https://kaplanpathways.study/contact-bournemouth)



# Pre-Master's for Events, Tourism and Hospitality Management

## Course options

**Academic entry level:** these options require minimum 3 years of higher education in a suitable subject.

### 2 terms

**English entry level:** minimum UKVI IELTS 5.5 (no less than 5.0 in any skill)

**Course start:** September 2018, January 2019

**Course length:** 7 to 9 months

**Degree entry:** September 2019

**Tuition fees:** £12,230

### 2.5 terms (with EES)

**English entry level:** minimum UKVI IELTS 5.0 in all skills

**Course start:** October 2018, July 2019

**Course length:** 10 to 11 months

**Degree entry:** September 2019, September 2020

**Tuition fees:** £14,355

### 3 terms (with EES)

**English entry level:** minimum UKVI IELTS 5.0 (no less than 4.5 in any skill)

**Course start:** September 2018, June 2019

**Course length:** 11 to 12 months

**Degree entry:** September 2019, September 2020

**Tuition fees:** £14,355

### Extended English and Skills

If you don't qualify for a 2-term Pre-Master's, you can take a course of up to 4 terms with Extended English and Skills (EES), including the 2.5 and 3-term options above. You can still qualify for EES if you have at least UKVI IELTS 4.5 (with no less than 4.0 in any skill).

## Core modules

**All students on this Pre-Master's will take:**

### Language for Study 3

- Complex arguments in English
- Awareness of language conventions

### Research Design and Critique

- Defining research problems
- Designing projects to find solutions to those problems

### Research Project

- Organisational and planning skills
- Supporting arguments with evidence and text references

### Skills for Study 2

- Analytical skills in written and spoken information

### Skills for Study 3

- Researching and analysing information to a high standard
- Structuring written and oral arguments

### Theory and Practice of Strategic Management

- Strategic leadership
- Logical approaches to business issues

### Tourism and Hospitality

- Key issues in tourism and hospitality
- Factors that impact on organisations



## Degree possibilities

This Pre-Master's course can lead to a range of degree subjects at BU. For example, you could progress to:

- Events Management
- Events Marketing
- International Hospitality and Tourism Management
- Nutrition and Behaviour
- Social Care
- Sustainable Tourism Planning
- Tourism Management

For a full list of degree options, see page 52.

## Career possibilities

This educational route can open up many career options for you. You could become a:

- Business Manager
- Catering Manager
- Events Planner
- Hotel Manager
- Market Researcher
- Tour Manager
- Travel Marketing Executive

### Have any questions?

Contact our team for help:  
[kaplanpathways.study/contact-bournemouth](https://kaplanpathways.study/contact-bournemouth)



# Pre-Master's for Media and Communications

## Course options

**Academic entry level:** these options require minimum 3 years of higher education in a suitable subject.

### 2 terms

**English entry level:** minimum UKVI IELTS 5.5 (no less than 5.0 in any skill)

**Course start:** September 2018, January 2019

**Course length:** 7 to 9 months

**Degree entry:** September 2019

**Tuition fees:** £12,230

### 2.5 terms (with EES)

**English entry level:** minimum UKVI IELTS 5.0 in all skills

**Course start:** October 2018, July 2019

**Course length:** 10 to 11 months

**Degree entry:** September 2019, September 2020

**Tuition fees:** £14,355

### 3 terms (with EES)

**English entry level:** minimum UKVI IELTS 5.0 (no less than 4.5 in any skill)

**Course start:** September 2018, June 2019

**Course length:** 11 to 12 months

**Degree entry:** September 2019, September 2020

**Tuition fees:** £14,355

### Extended English and Skills

If you don't qualify for a 2-term Pre-Master's, you can take a course of up to 4 terms with Extended English and Skills (EES), including the 2.5 and 3-term options above. You can still qualify for EES if you have at least UKVI IELTS 4.5 (with no less than 4.0 in any skill).

## Core modules

**All students on this Pre-Master's will take:**

### European Media and Liberal Democracy

- Liberal democracy as the main political system in Europe
- Politics in the media

### Global Corporate Marketing Strategies

- Strategies in developing and distributing products worldwide
- Issues affecting marketing strategies

### Language for Study 3

- Complex arguments in English
- Awareness of language conventions

### Practical Project – Media

- Research project relevant to degree

### Research Project – Media

- Planning and implementing a media project
- Reflecting on the project and the process

### Skills for Study 2

- Analytical skills in written and spoken information

### Skills for Study 3

- Researching and analysing information to a high standard
- Structuring written and oral arguments

## Degree possibilities

This Pre-Master's course can lead to a range of degree subjects at BU. For example, you could progress to:

- 3D Computer Animation
- Cinematography
- Digital Effects
- Directing Film and Television
- Media and Communication
- Multimedia Journalism
- Nutrition and Behaviour
- Post Production Editing
- Radio Production
- Scriptwriting
- Social Care

For a full list of degree options, see page 52.

## Career possibilities

This educational route can open up many career options for you.

You could become a:

- Animation Artist
- Communications Officer
- Cinematographer
- Director
- Editor
- Film Producer
- Journalist
- Producer
- Screenwriter

## Have any questions?

Contact our team for help:  
[kaplanpathways.study/contact-bournemouth](https://kaplanpathways.study/contact-bournemouth)



# Choose your postgraduate degree

Find your preferred Bournemouth University postgraduate degree in the tables below, and use the key to discover which International College pathway course is right for you.

## Key to pathway courses

Pre-Master's for Business, Law or Finance .....page 46

- B Business pathway
- F Finance pathway
- L Law pathway

E Pre-Master's for Events, Tourism and Hospitality Management .....page 48

M Pre-Master's for Media and Communications .....page 50

## Business

Finance MSc	F
Innovation with Management and Entrepreneurship MSc	B F L
International Accounting and Finance MSc	B F L
International Economics and Finance MSc	B F L
International Finance MSc	B F L
International Investment and Finance MSc	B F L
International Management MSc	B F L
International Risk Management and Finance MSc	B F L
International Taxation and Finance MSc	B F L
Management with Human Resources MSc	B F L
Management with Project Management MSc	B F L
Marketing Management MSc	B F L
Master of Business Administration MBA	B F L
Retail Management and Marketing MSc	B

## Hospitality and Tourism

Events Management MSc	B E
Events Marketing MSc	B E
International Hospitality and Tourism Management MSc	E
Tourism Marketing Management MSc	E
Tourism Management MSc	E

## Law

Intellectual Property LLM	B F L
International Commercial Law LLM	B F L
International Tax Law LLM	B F L
Public International Law LLM	B F L

## Media

3D Computer Animation MA*	M
Cinematography for Film and Television MA	M
Computer Animation and Visual Effects MSc*	M
Digital Effects MA*	M
Directing Film and Television MA	M
Media and Communication MA	M
Multimedia Journalism MA	M
Post Production Editing MA	M
Producing Film and Television MA	M
Radio Production MA	M
Scriptwriting MA	M
Sound Design for Film & Television MA	M

## Social Sciences

Nutrition and Behaviour MSc	B F L E M
Social Care MA	B F L E M

\* For these degrees, you will need to submit a portfolio or statement of purpose, to be assessed by the Kaplan Admissions team. You will then be interviewed by the University's Media school on your suitability for the course.

## Find your degree online

Available degree options may change over time, so visit our online degree finder for the most up-to-date list:  
[kaplanpathways.com/bournemouth/pg-degrees](https://kaplanpathways.com/bournemouth/pg-degrees)



# Direct degree admission with Pre-Sessional English

If you meet the academic entry requirements for your Bournemouth University degree, but just need to improve your English language ability to be accepted, you can take a Pre-Sessional English course at Bournemouth University International College.

## Conditional offers

Our Pre-Sessional English courses will help you to meet the English language conditions of your offer to study at Bournemouth University.

Pre-Sessional English (Fast Track) can help you improve your English language skills to meet degree requirements of IELTS 6.0, with at least 5.5 in all skills. The Study Skills option provides all-round university preparation if you have more time to improve your English.

### Pre-Sessional English (Fast Track) modules

- Exam Skills Practice
- Grammar and Sentence Structure
- Language for Study
- Vocabulary and Pronunciation

### Pre-Sessional English with Study Skills modules\*

- Language for Study
- Personal Development Project
- Progressions Project (related to your degree)
- Skills for Study

## Unconditional offers

These courses are designed not only to improve your academic skills and your English; they also introduce you to living and studying in Bournemouth and the UK.

### Bachelor's Enhancement Programme modules

- Life in the UK
- Personal Development and Progression Project
- Skills for Study

### Master's Enhancement Programme modules

- Personal Development and Progression Project
- Skills for Postgraduate Study
- UK Culture and University Life

Want to know more?  
[kaplanpathways.study/bournemouth-pse](https://kaplanpathways.study/bournemouth-pse)

\* Specific modules will depend on the length of your programme.

"When I have questions, the staff here always try to help me right away. Even if they don't have the answer immediately, they will email me later when they find out.

The service here is so good, and I have already suggested studying here to friends who want to study English abroad!"

**Wani from Thailand**  
MSc International Management



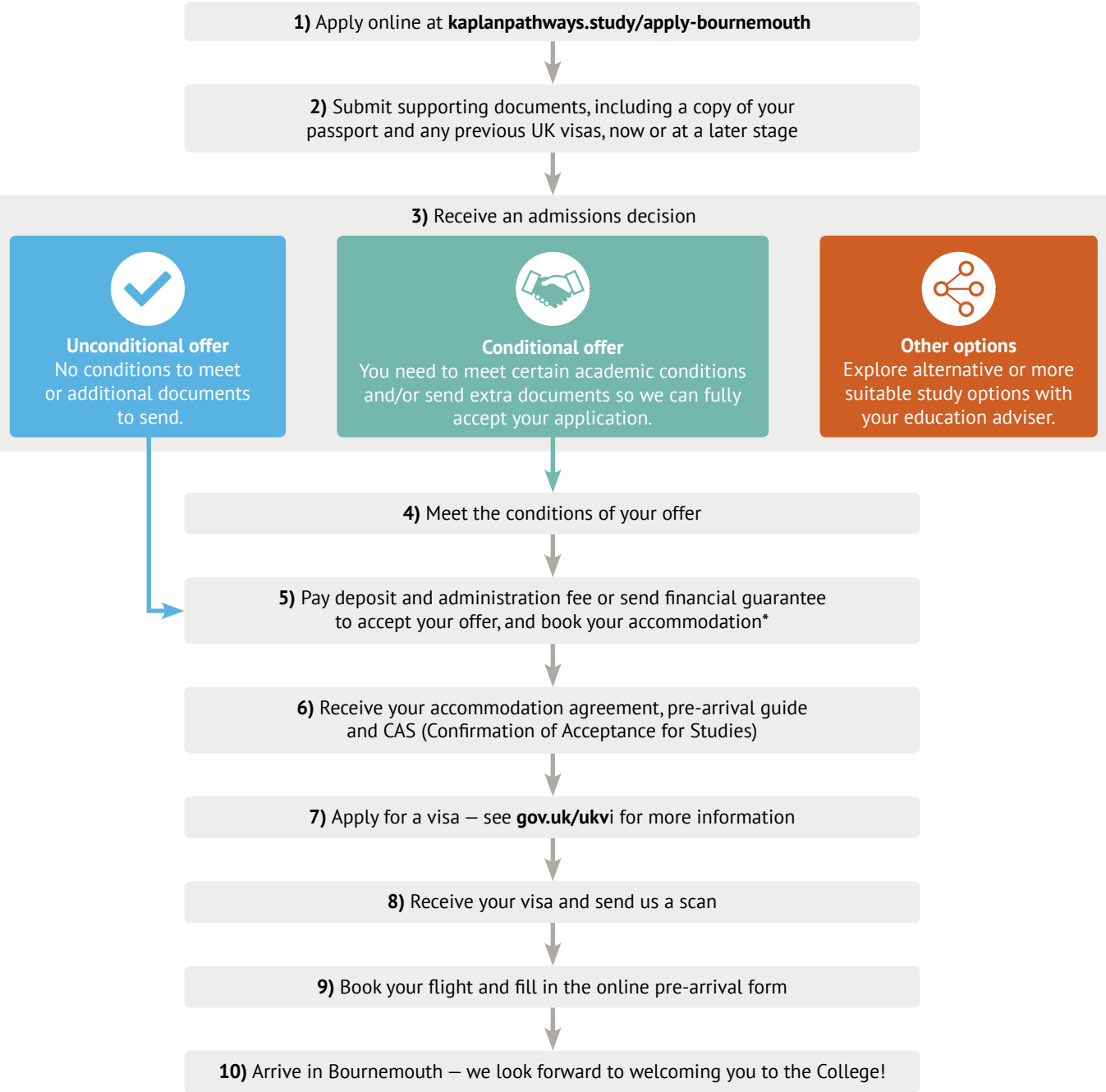


# Next steps

# How to apply

Applying to Bournemouth University with Kaplan is easy! Just follow this step-by-step guide, and if you have any questions along the way, our friendly advisers will be happy to help.

Join us at Bournemouth University International College in 10 simple steps



\* To book your accommodation, complete the online accommodation form and pay the holding fee when you accept your study offer. You will then receive your accommodation agreement, which you will need to read, sign and return to reserve your room.



# Questions and answers

If you still have questions on studying at Bournemouth University International College, let us try to answer them below. Alternatively, you can contact us for more information. You'll find contact details on the next page.

### How much money do I need to study at the College?

Studying in the UK is a big investment, so you need to plan ahead. You must have at least £1,015 for each month of your pathway course, up to a maximum of 9 months, as well as funds to cover any unpaid tuition fees. This must be held in a recognised bank account for at least 28 days before you apply for your Tier 4 (General) student visa. See the guide below for more information on costs.

### What supporting documents do I need to provide?

For your application to be complete, you need to send a few extra items. These include:

- copies of your passport and any previous UK visas
- IELTS certificate (UKVI Academic)
- academic transcripts (accompanied by certified translations if the originals aren't in English)

You can still apply without all of these items, and submit them later.

### How long does the application process take?

If your application to study is complete and successful, once our Admissions team receives it, they will issue an offer within 1 working day. The duration of the process that follows can vary, so we recommend that you apply at least a few months in advance of your start date. This will allow you enough time to apply for your visa, reserve your accommodation and get ready for your trip.

### Do I need insurance during my course?

You'll need to be fully covered by student insurance for all of your pathway course in the UK. We can offer you a comprehensive policy together with Endsleigh, a leading insurance provider. Find out more at: [kaplanpathways.com/insurance](https://kaplanpathways.com/insurance)

### Are scholarships available?

Some partial tuition fee scholarships for pathway courses and degrees are offered to students who achieve good grades. You can find out more at: [kaplanpathways.com/how-to-apply/scholarships](https://kaplanpathways.com/how-to-apply/scholarships)

### Do I need a guardian while I study?

If you're under 18 years old, you'll need a legal guardian in the UK until you turn 18. This is something we can help arrange. Find out more at: [collegeguardians.co.uk](https://collegeguardians.co.uk)

### What if I want to apply for a Pre-Sessional English course?

Please visit [kaplanpathways.study/bournemouth-pse](https://kaplanpathways.study/bournemouth-pse) for more information and to download an application form.

### Do you speak my language?

If you, or your parents, want to speak to us in your first language, we can help! Between them, our education experts speak the following languages:

Arabic	Ibo	Spanish
Azerbaijani	Indonesian	Swahili
Bengali	Kazakh	Thai
Cantonese	Korean	Turkish
English	Malay	Vietnamese
French	Mandarin	Yoruba
German	Punjabi	
Hindi	Russian	

Watch our helpful videos online

▶ [kpln.org/student-faq](https://kpln.org/student-faq)

### Guide to costs for Bournemouth University International College

<b>Tuition fees</b>	£12,230 to £19,100 (depending on your course level, subject and length), typically including a £5,000 deposit	<b>Accommodation</b>	£4,562 to £16,349* (depending on your housing option and course length), typically including a £1,000 holding fee
<b>Administration fee</b>	£200 (payable at the same time as the tuition deposit)	<b>Living expenses</b>	At least £1,015 per month (in line with UKVI regulations)
<b>Course books</b>	Up to £395 (depending on your course length and subject)	<b>Insurance</b>	£220 to £680 (depending on your course length)

\* These amounts are based on previous academic years. Figures for 2018-19 will be available online soon – contact us for more information.

## Contact us

There are many ways you can gain entry to Bournemouth University with Kaplan. Contact us, and see how we can help you transform your future.

### Contact our Admissions Centre

Our Admissions Centre in the UK is home to a team of expert education advisers. Our friendly staff can tell you about available course options, guide you through your application, and provide useful pre-arrival information.

☎ +44 (0)20 7045 4925

📧 [kaplanpathways.study/contact-bournemouth](https://kaplanpathways.study/contact-bournemouth)

### Meet us in your country

Let us come to you. Our experienced education consultants frequently travel around the world meeting students. Arrange to meet one of them in your country to discuss your ambitions and study plans.

📧 [kaplanpathways.com/kaplan-in-my-country](https://kaplanpathways.com/kaplan-in-my-country)

### Find your local country office

For advice closer to home, contact one of our country offices. We also have a network of trusted education agents in over 100 countries around the world, so help is never far away.

📧 [kaplanpathways.world](https://kaplanpathways.world)

This prospectus has been drafted in advance of the academic year to which it applies. Every effort has been made to ensure that the information is accurate at the time of publishing, but changes (for example to course content) are likely to occur given the interval between publishing and commencement of the course. It is therefore very important to check the website or contact us for any updates before you apply. Once you have applied, any change which impacts the terms and conditions of your offer or a significant part of your programme will be communicated to you. Published February 2018.

Bournemouth University International College is operated by Kaplan Bournemouth Limited (company number: 08291927), with registered address: 2nd Floor, Warwick Building, Kensington Village, Avonmore Road, London W14 8HQ.

We hope to see you in Bournemouth very soon!



